

RESIDENCE 204

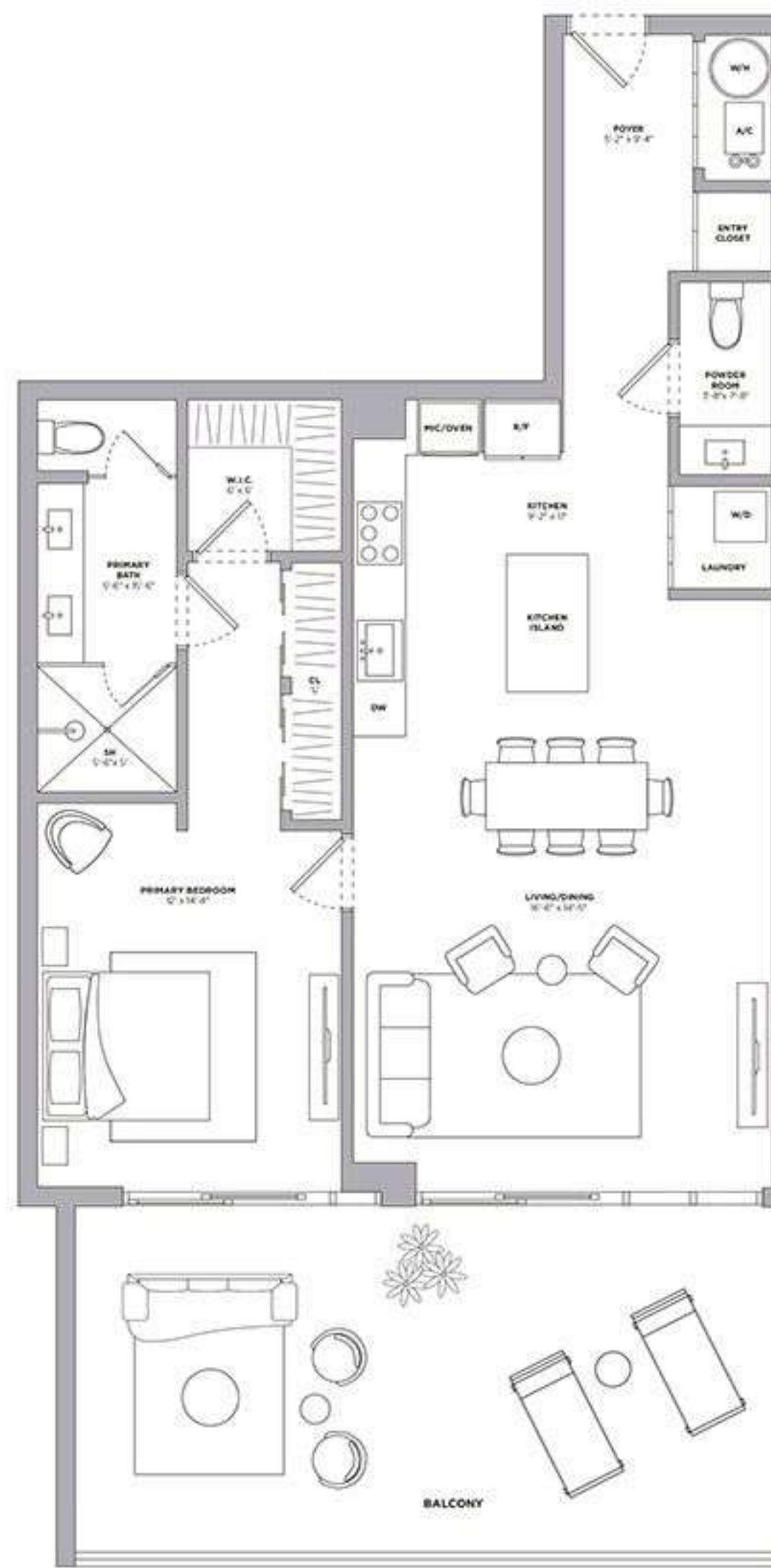
CITY VIEW

LEVEL 2
1 BEDROOMS
1.5 BATHROOMS

INTERIOR
1,125 SF - 105 M

EXTERIOR
473 SF - 44 M

TOTAL
1,598 SF - 149 M



Stated dimensions are measured to the exterior boundaries of the exterior walls and the centerline of interior demising walls and in fact vary from the dimensions that would be determined by using the description and definition of the "Unit" set forth in the Declaration (which generally only includes the interior airspace between the perimeter walls and excludes interior structural components). For your reference, the area of the Unit, determined in accordance with those defined unit boundaries, is 1,125 square footage. Note that measurements of rooms set forth on this floor plan are generally taken at the greatest points of each given room (as if the room were a perfect rectangle), without regard for any cutouts. Accordingly, the area of the actual room will typically be smaller than the product obtained by multiplying the stated length times width. All dimensions are approximate and may vary with actual construction, and all floor plans and development plans are subject to change.

LPH 04

LOWER PENTHOUSE RESIDENCE

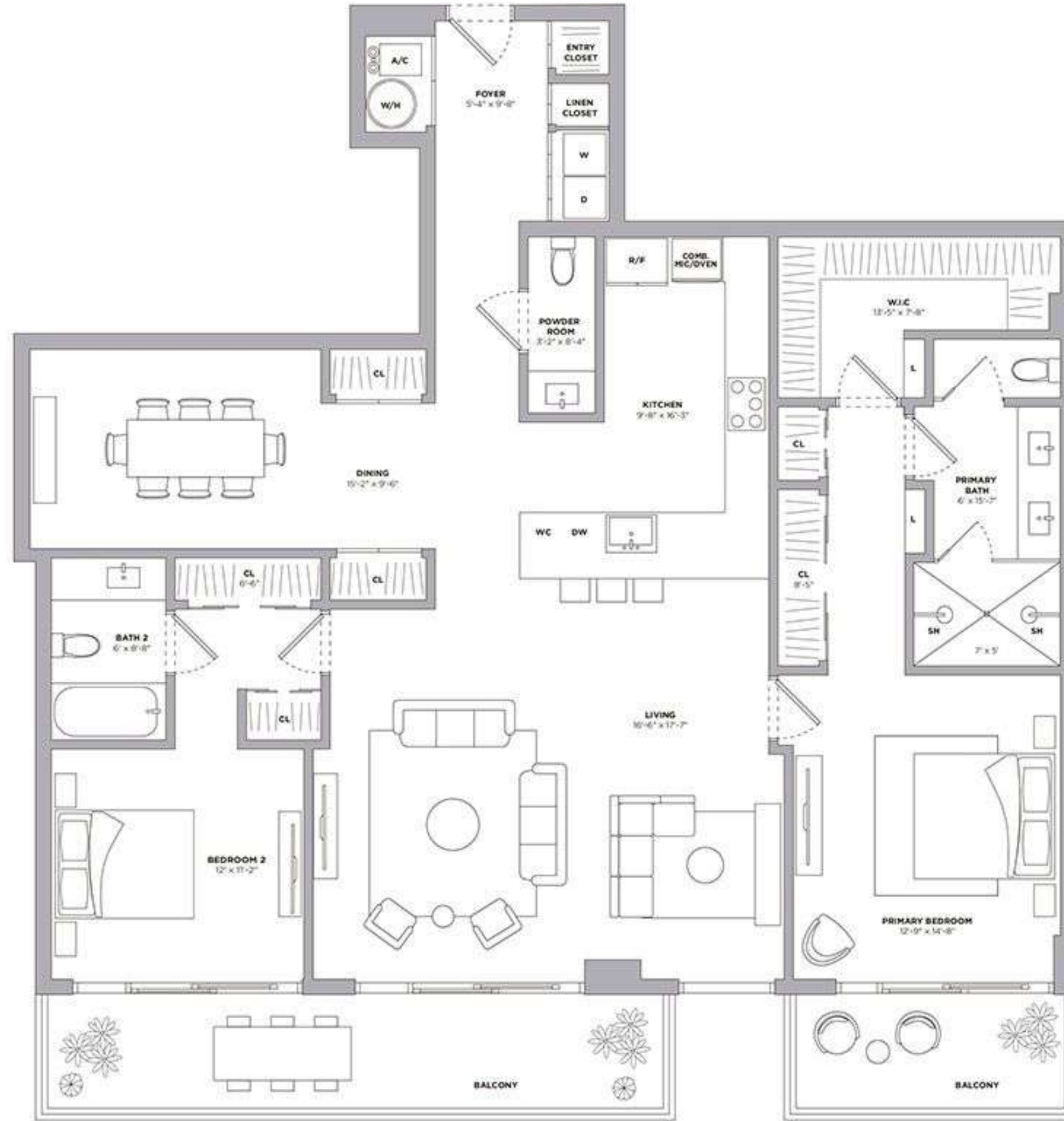
CITY VIEW

LEVEL 7
2 BEDROOMS
2.5 BATHROOMS

INTERIOR
1,851 SF - 172 M

EXTERIOR
264 SF - 25 M

TOTAL
2,115 SF - 197 M



Stated dimensions are measured to the exterior boundaries of the exterior walls and the centerline of interior demising walls and in fact vary from the dimensions that would be determined by using the description and definition of the "Unit" set forth in the Declaration (which generally only includes the interior airspace between the perimeter walls and excludes interior structural components). For your reference, the area of the Unit, determined in accordance with those defined unit boundaries, is 1,851 square footage. Note that measurements of rooms set forth on this floor plan are generally taken at the greatest points of each given room (as if the room were a perfect rectangle), without regard for any cutouts. Accordingly, the area of the actual room will typically be smaller than the product obtained by multiplying the stated length times width. All dimensions are approximate and may vary with actual construction, and all floor plans and development plans are subject to change.

LEVELS 2 - 4
2 BEDROOMS
2.5 BATHROOMS

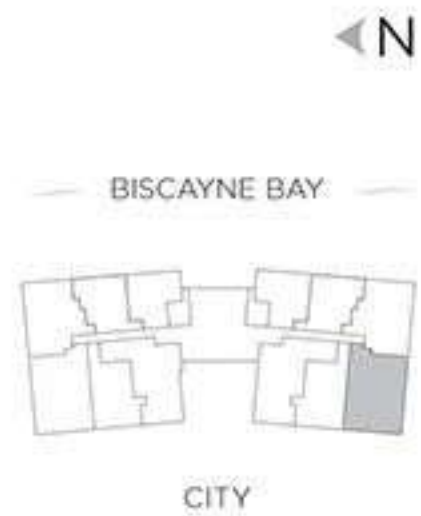
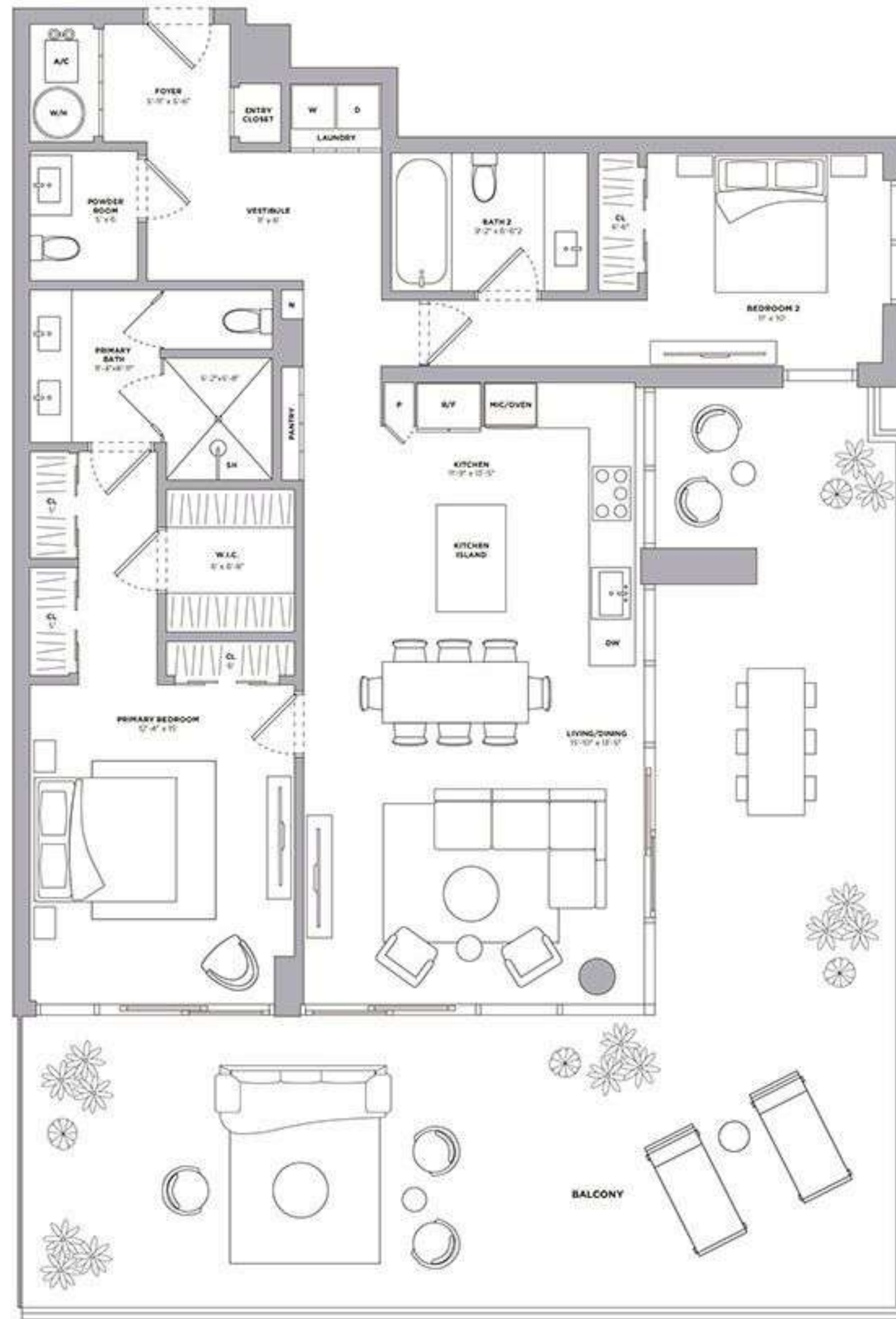
INTERIOR
 1,420 SF - 132 M

EXTERIOR
 LEVEL 2
 925 SF - 86 M

LEVELS 3 & 4
 222 SF - 21 M

TOTAL
 LEVEL 2
 2,345 SF - 218 M

LEVELS 3 & 4
 1,642 SF - 153 M



Stated dimensions are measured to the exterior boundaries of the exterior walls and the centerline of interior demising walls and in fact vary from the dimensions that would be determined by using the description and definition of the "Unit" set forth in the Declaration (which generally only includes the interior airspace between the perimeter walls and excludes interior structural components). For your reference, the area of the Unit, determined in accordance with those defined unit boundaries, is 1,420 square footage. Note that measurements of rooms set forth on this floor plan are generally taken at the greatest points of each given room (as if the room were a perfect rectangle), without regard for any cutouts. Accordingly, the area of the actual room will typically be smaller than the product obtained by multiplying the stated length times width. All dimensions are approximate and may vary with actual construction, and all floor plans and development plans are subject to change.

LEVELS 2 - 4
2 BEDROOMS
2.5 BATHROOMS

INTERIOR
 1,331 SF - 124 M

EXTERIOR
 LEVEL 2
 167 SF - 16 M

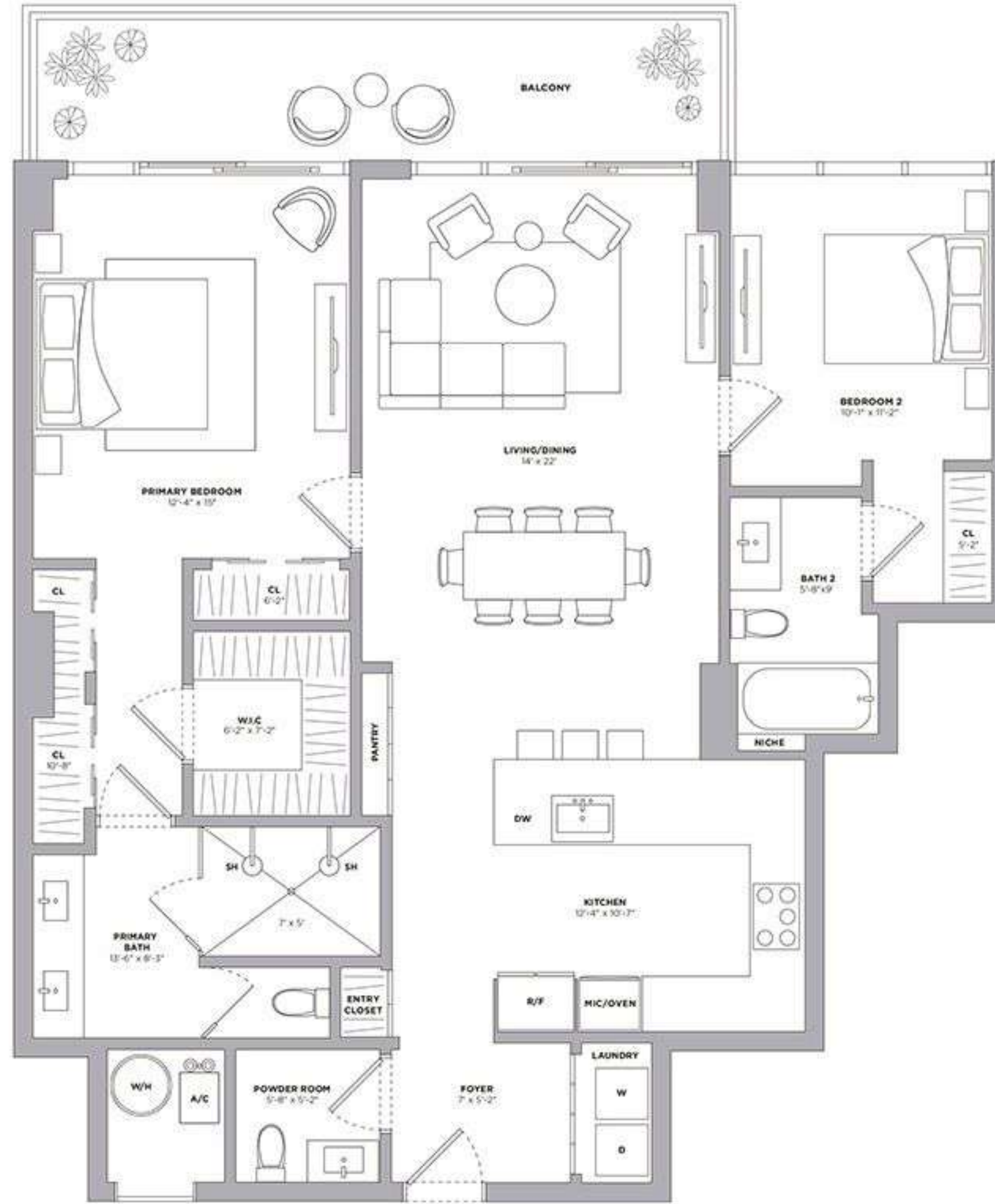
LEVEL 3
 219 SF - 20 M

LEVEL 4
 199 SF - 19 M

TOTAL
 LEVEL 2
 1,498 SF - 140 M

LEVEL 3
 222 SF - 145 M

LEVEL 4
 222 SF - 143 M



Stated dimensions are measured to the exterior boundaries of the exterior walls and the centerline of interior demising walls and in fact vary from the dimensions that would be determined by using the description and definition of the "Unit" set forth in the Declaration (which generally only includes the interior airspace between the perimeter walls and excludes interior structural components). For your reference, the area of the Unit, determined in accordance with those defined unit boundaries, is 1,331 square footage. Note that measurements of rooms set forth on this floor plan are generally taken at the greatest points of each given room (as if the room were a perfect rectangle), without regard for any cutouts. Accordingly, the area of the actual room will typically be smaller than the product obtained by multiplying the stated length times width. All dimensions are approximate and may vary with actual construction, and all floor plans and development plans are subject to change.

LEVELS 5 & 6
2 BEDROOMS
2.5 BATHROOMS

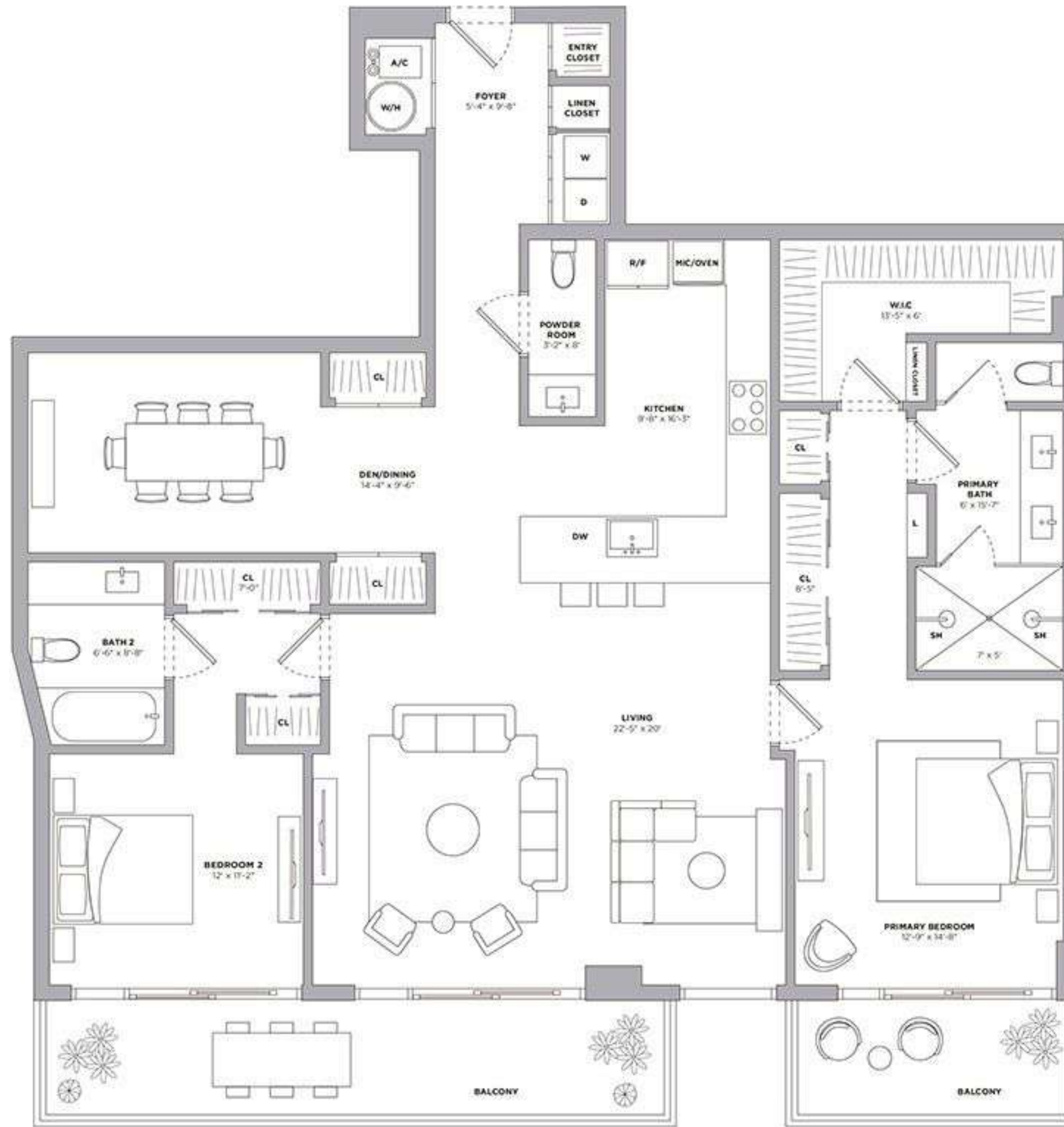
INTERIOR
 1,861 SF - 173 M

EXTERIOR
 LEVEL 5
 210 SF - 20 M

LEVEL 6
 264 SF - 25 M

TOTAL
 LEVEL 5
 2,071 SF - 187 M

LEVEL 6
 2,125 SF - 167 M



Stated dimensions are measured to the exterior boundaries of the exterior walls and the centerline of interior demising walls and in fact vary from the dimensions that would be determined by using the description and definition of the "Unit" set forth in the Declaration (which generally only includes the interior airspace between the perimeter walls and excludes interior structural components). For your reference, the area of the Unit, determined in accordance with those defined unit boundaries, is 1,861 square footage. Note that measurements of rooms set forth on this floor plan are generally taken at the greatest points of each given room (as if the room were a perfect rectangle), without regard for any cutouts. Accordingly, the area of the actual room will typically be smaller than the product obtained by multiplying the stated length times width. All dimensions are approximate and may vary with actual construction, and all floor plans and development plans are subject to change.

LEVELS 2 - 4
2 BEDROOMS
2.5 BATHROOMS

INTERIOR
 1,329 SF - 124 M

EXTERIOR
 LEVEL 2
 119 SF - 11 M

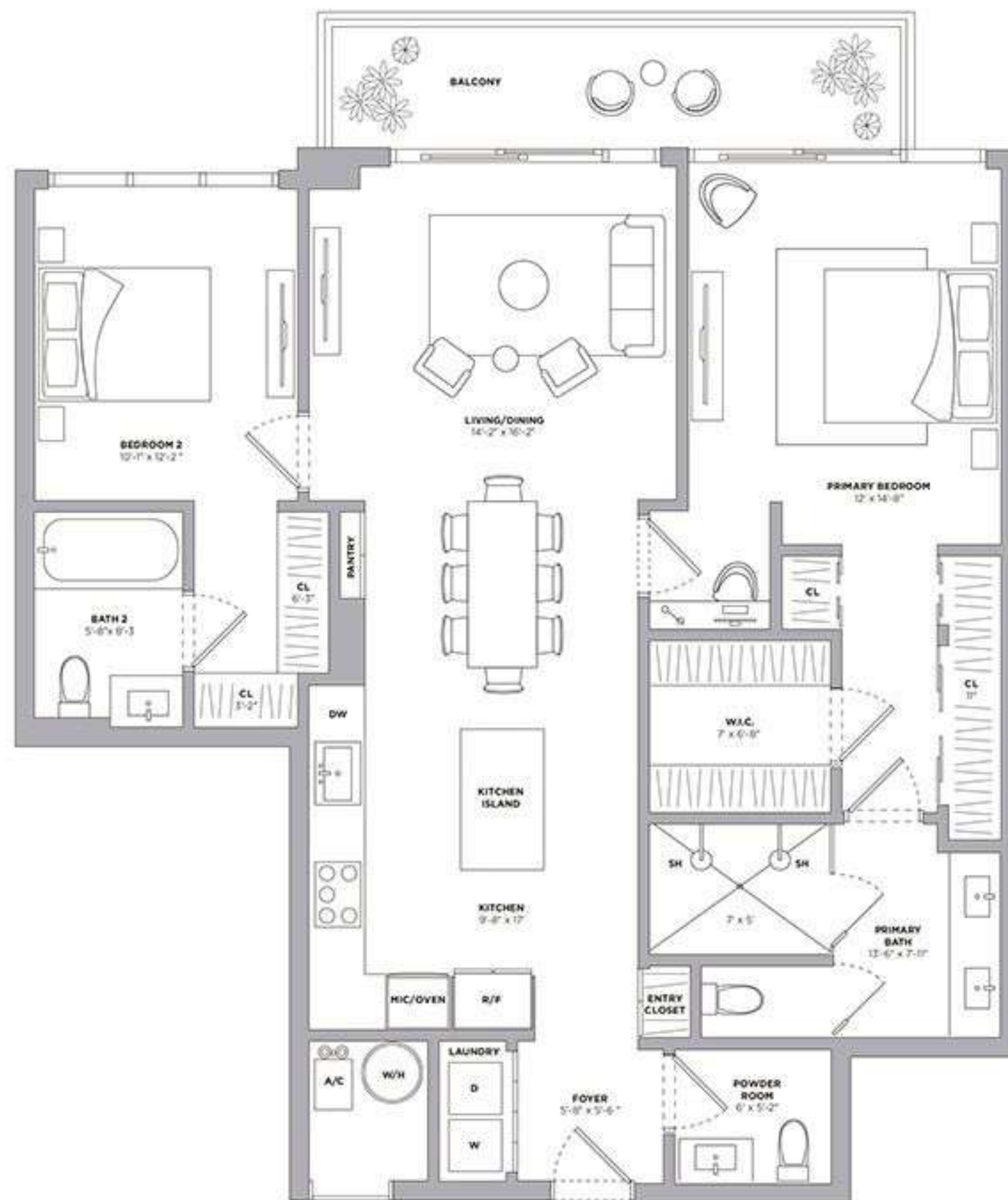
LEVEL 3
 174 SF - 16 M

LEVEL 4
 159 SF - 15 M

TOTAL
 LEVEL 2
 1,448 SF - 135 M

LEVEL 3
 1,503 SF - 140 M

LEVEL 4
 1,488 SF - 139 M



LEVELS 3 & 4
2 BEDROOMS
2.5 BATHROOMS
DEN

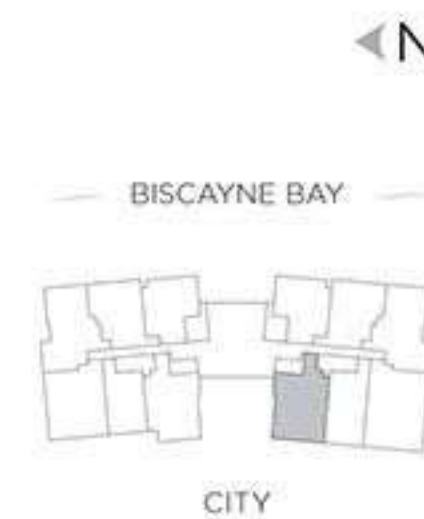
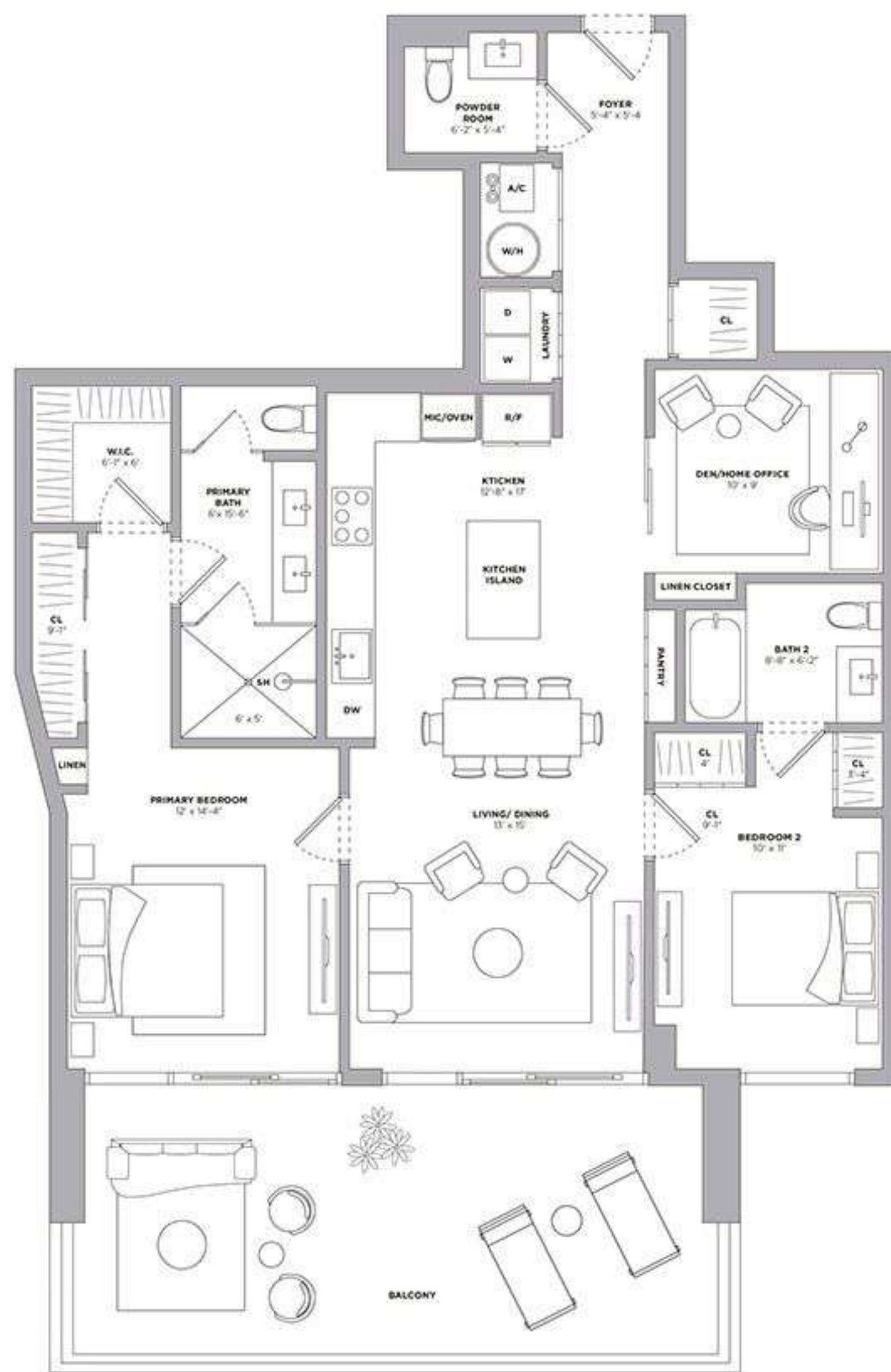
INTERIOR
 1,391 SF - 129 M

EXTERIOR
 LEVEL 3
 404 SF - 38 M

LEVEL 4
 143 SF - 13 M

TOTAL
 LEVEL 3
 1,795 SF - 167 M

LEVEL 4
 1,795 SF - 142 M



LPH 02

LOWER
PENTHOUSE
RESIDENCE

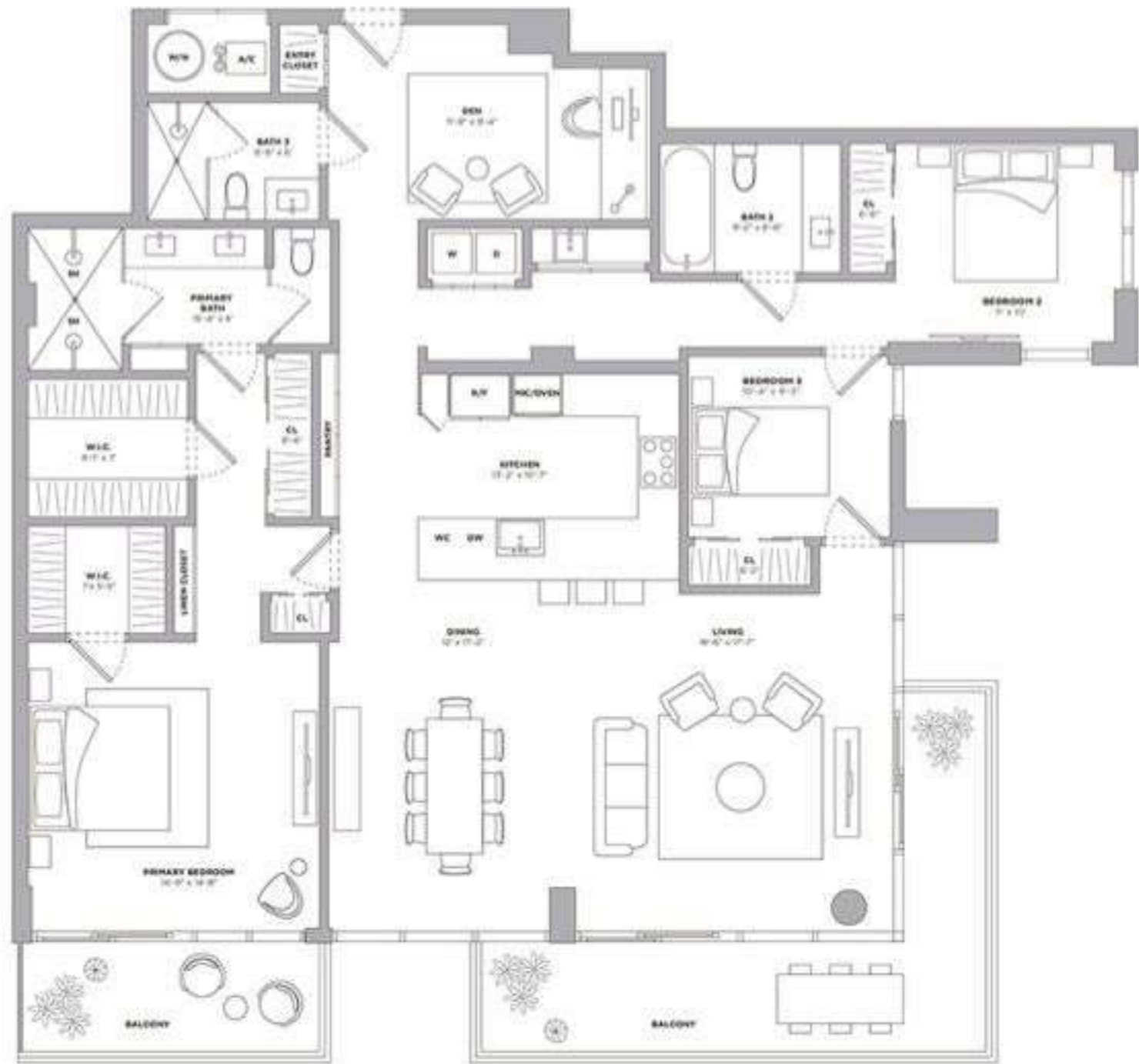
CITY VIEW

LEVEL 7
3 BEDROOMS
3 BATHROOMS
DEN

INTERIOR
2,068 SF - 192 M

EXTERIOR
316 SF - 29 M

TOTAL
2,384 SF - 221 M



LA BAIA
BAY HARBOR ISLANDS



Stated dimensions are measured to the exterior boundaries of the exterior walls and the centerline of interior dividing walls and in fact vary from the dimensions that would be determined by using the description and definition of the "Unit" set forth in the Declaration (which generally only includes the interior airspace between the perimeter walls and excludes interior structural components). For your reference, the area of the Unit, determined in accordance with those defined unit boundaries, is 2,068 square footage. Note that measurements of rooms set forth on this floor plan are generally taken at the greatest points of each given room (as if the room were a perfect rectangle), without regard for any cutouts. Accordingly, the area of the actual room will typically be smaller than the product obtained by multiplying the stated length times width. All dimensions are approximate and may vary with actual construction, and all floor plans and development plans are subject to change.

DUPLEX RESIDENCE 304

CITY VIEW

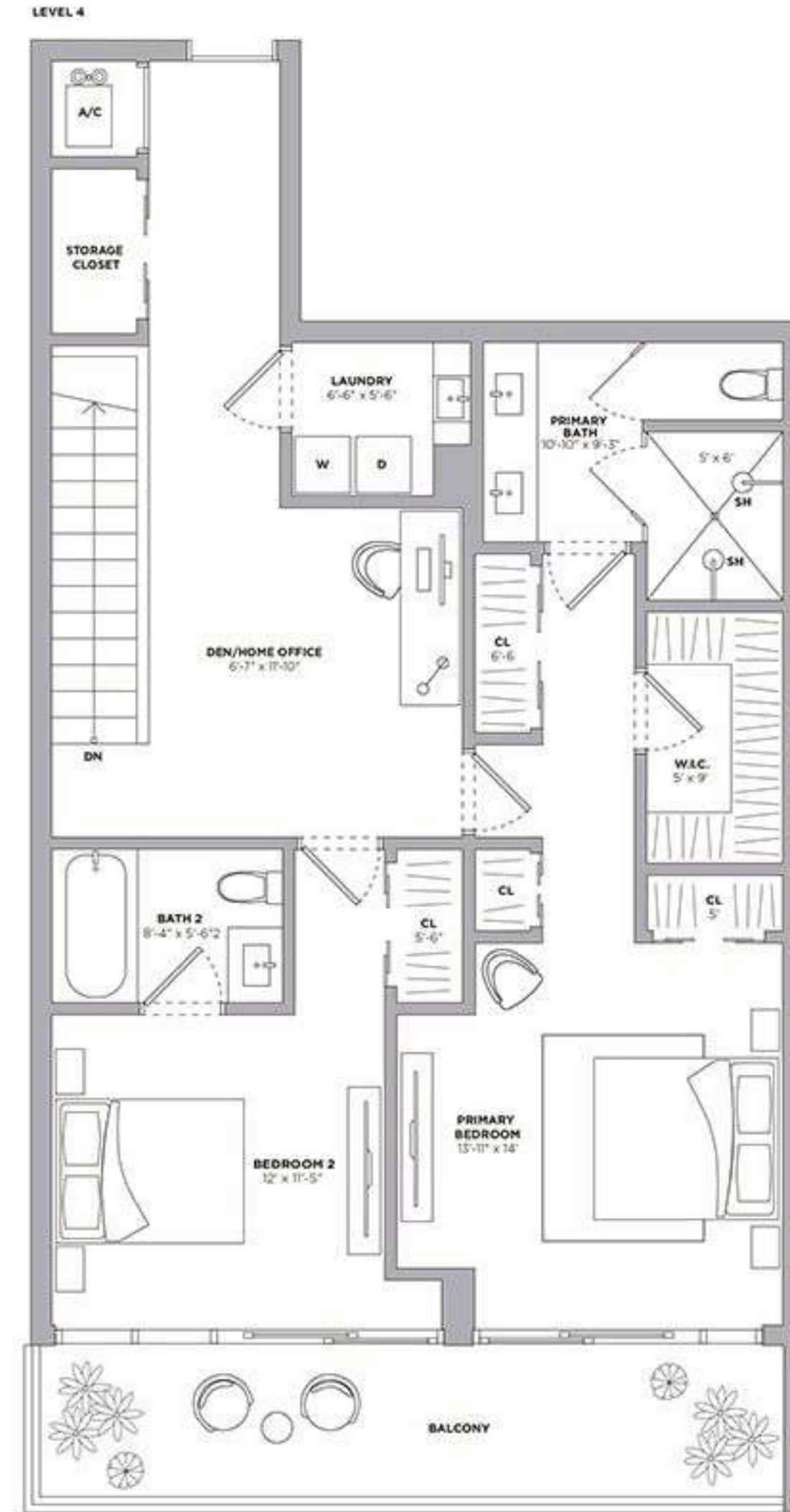
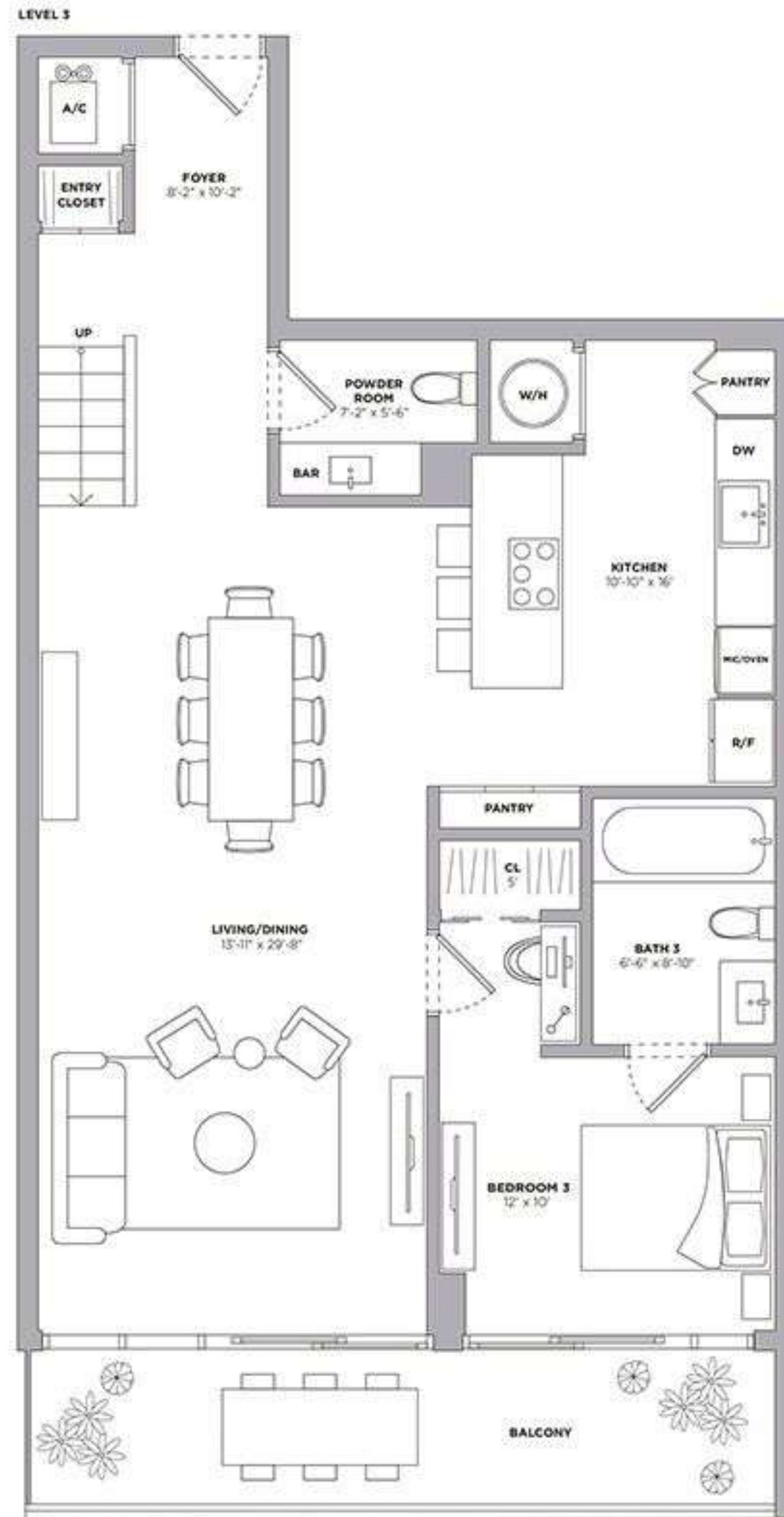
LEVELS 3 & 4
3 BEDROOMS
3.5 BATHROOMS
DEN

INTERIOR
2,192 SF - 204 M

EXTERIOR
LEVEL 3
119 SF - 11 M

LEVEL 4
174 SF - 16 M

TOTAL
2,485 SF - 231 M



Stated dimensions are measured to the exterior boundaries of the exterior walls and the centerline of interior demising walls and in fact vary from the dimensions that would be determined by using the description and definition of the "Unit" set forth in the Declaration (which generally only includes the interior airspace between the perimeter walls and excludes interior structural components). For your reference, the area of the Unit, determined in accordance with those defined unit boundaries, is 2,192 square footage. Note that measurements of rooms set forth on this floor plan are generally taken at the greatest points of each given room (as if the room were a perfect rectangle), without regard for any cutouts. Accordingly, the area of the actual room will typically be smaller than the product obtained by multiplying the stated length times width. All dimensions are approximate and may vary with actual construction, and all floor plans and development plans are subject to change.

LPH 05

LOWER PENTHOUSE RESIDENCE

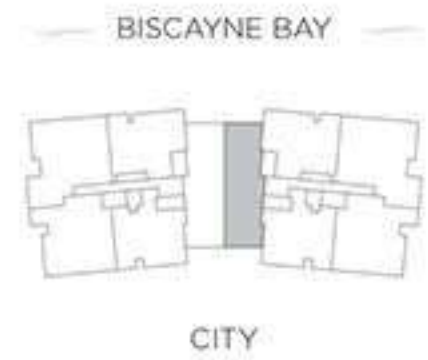
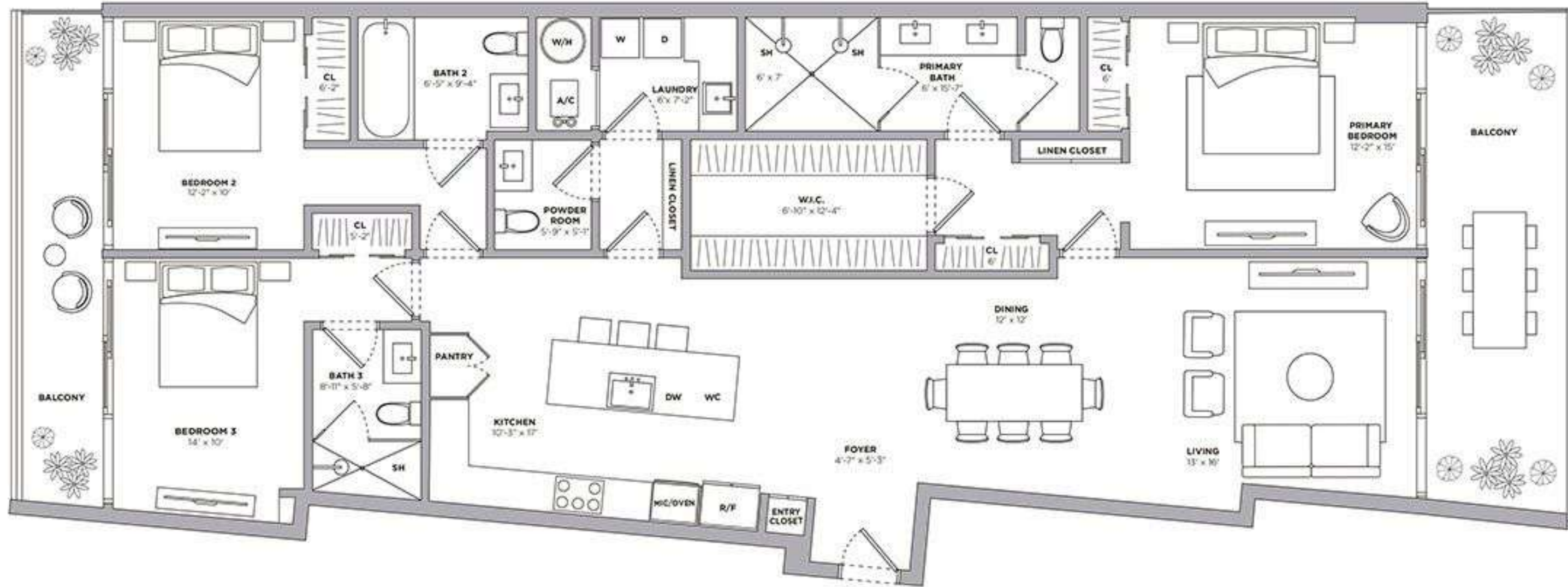
BAY VIEW

LEVEL 7
3 BEDROOMS
3.5 BATHROOMS

INTERIOR
1,858 SF - 173 M

EXTERIOR
333 SF - 31 M

TOTAL
2,191 SF - 204 M



Stated dimensions are measured to the exterior boundaries of the exterior walls and the centerline of interior demising walls and in fact vary from the dimensions that would be determined by using the description and definition of the "Unit" set forth in the Declaration (which generally only includes the interior airspace between the perimeter walls and excludes interior structural components). For your reference, the area of the Unit, determined in accordance with those defined unit boundaries, is 1,858 square footage. Note that measurements of rooms set forth on this floor plan are generally taken at the greatest points of each given room (as if the room were a perfect rectangle), without regard for any cutouts. Accordingly, the area of the actual room will typically be smaller than the product obtained by multiplying the stated length times width. All dimensions are approximate and may vary with actual construction, and all floor plans and development plans are subject to change.

LEVELS 2 - 4
3 BEDROOMS
3.5 BATHROOMS

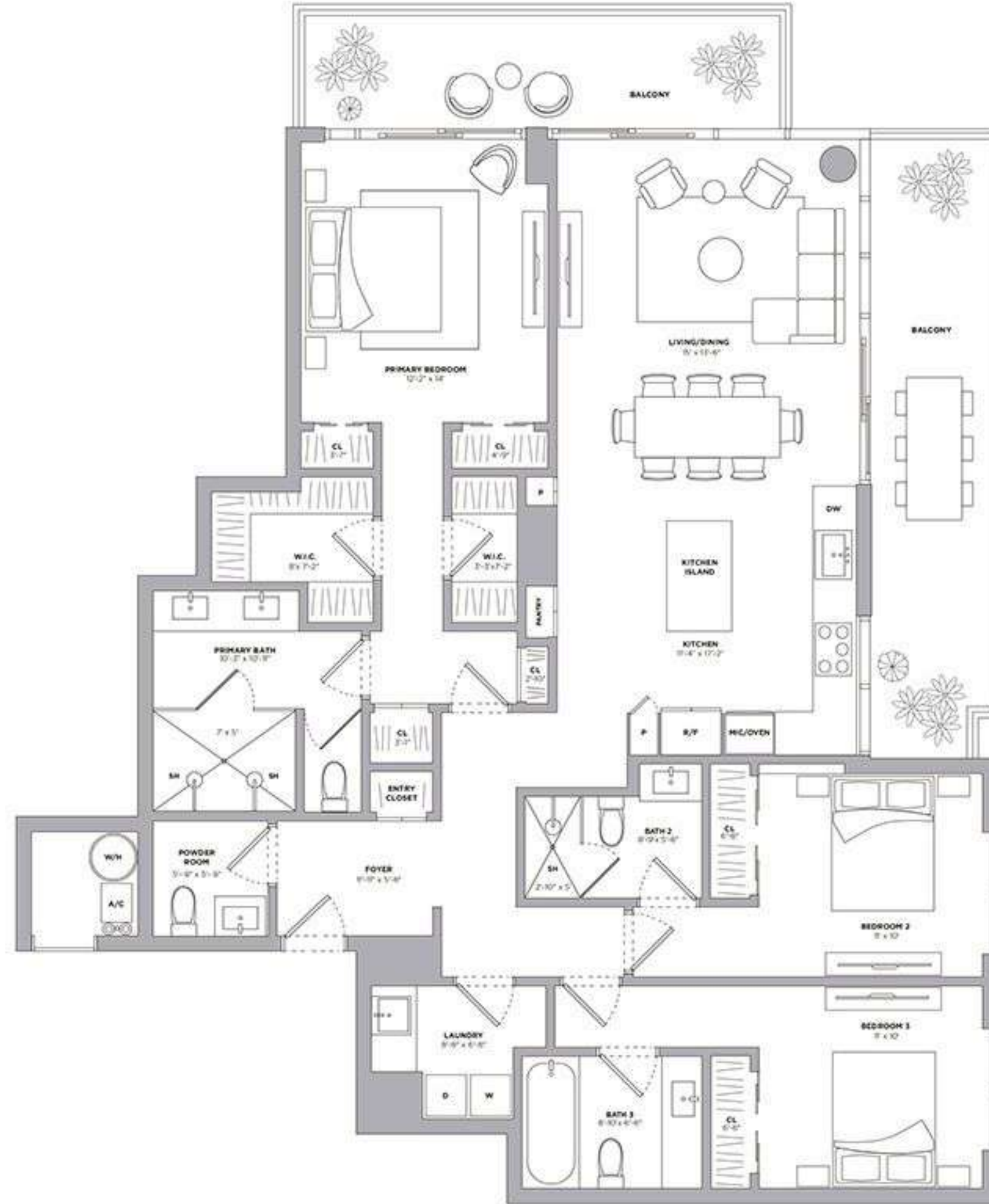
INTERIOR
 1,753 SF - 163 M

EXTERIOR
 LEVEL 2
 348 SF - 32 M

LEVELS 3 & 4
 203 SF - 19 M

TOTAL
 LEVEL 2
 2,101 SF - 195 M

LEVELS 3 & 4
 1,956 SF - 182 M



Stated dimensions are measured to the exterior boundaries of the exterior walls and the centerline of interior demising walls and in fact vary from the dimensions that would be determined by using the description and definition of the "Unit" set forth in the Declaration (which generally only includes the interior airspace between the perimeter walls and excludes interior structural components). For your reference, the area of the Unit, determined in accordance with those defined unit boundaries, is 1,753 square footage. Note that measurements of rooms set forth on this floor plan are generally taken at the greatest points of each given room (as if the room were a perfect rectangle), without regard for any cutouts. Accordingly, the area of the actual room will typically be smaller than the product obtained by multiplying the stated length times width. All dimensions are approximate and may vary with actual construction, and all floor plans and development plans are subject to change.

LPH 12

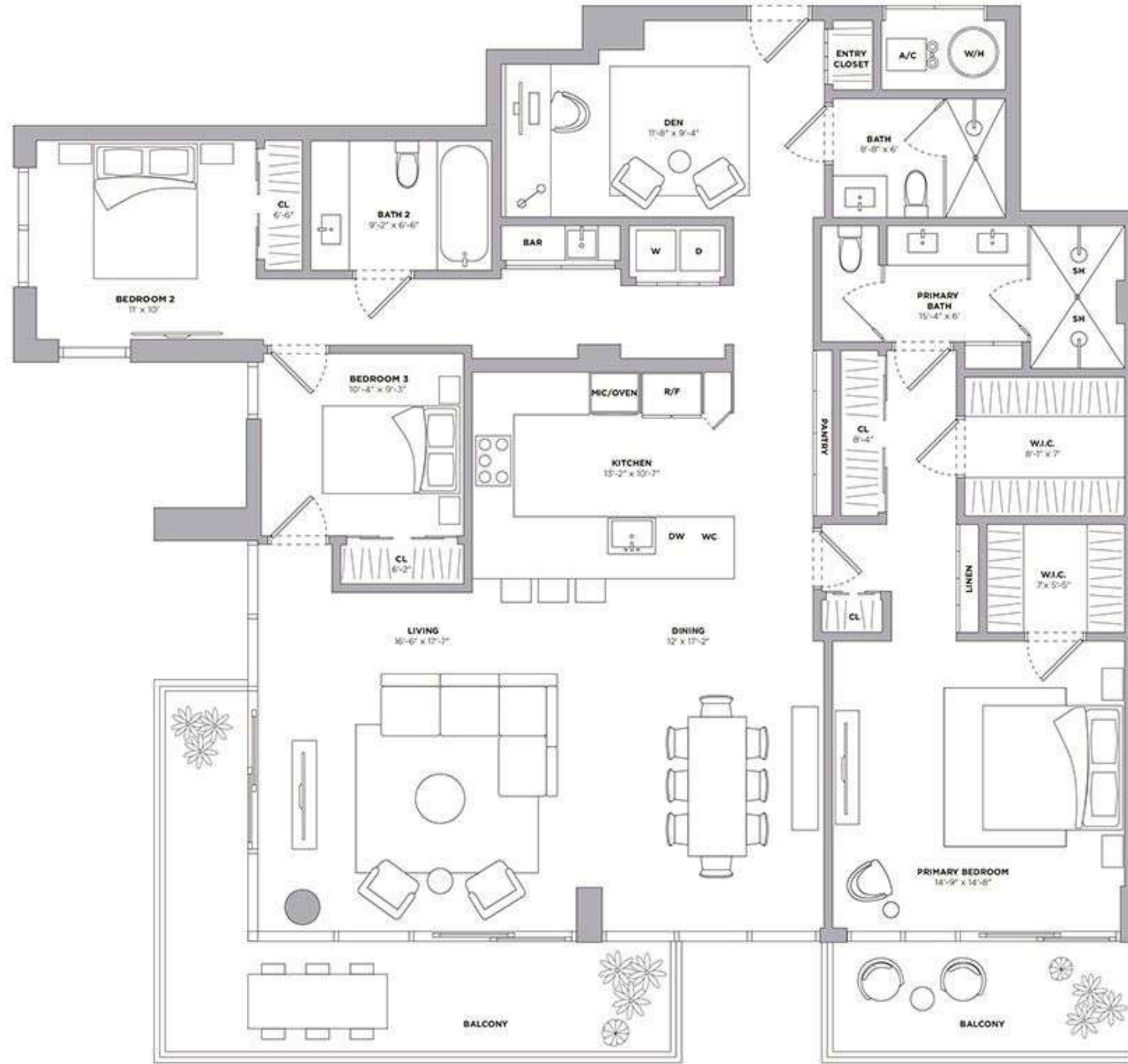
LOWER
PENTHOUSE
RESIDENCE
CITY VIEW

LEVEL 7
3 BEDROOMS
3.5 BATHROOMS
DEN

INTERIOR
2,068 SF - 192 M

EXTERIOR
316 SF - 29 M

TOTAL
2,384 SF - 221 M




LA BAIA
BAY HARBOR ISLANDS



Stated dimensions are measured to the exterior boundaries of the exterior walls and the centerline of interior demising walls and in fact vary from the dimensions that would be determined by using the description and definition of the "Unit" set forth in the Declaration (which generally only includes the interior airspace between the perimeter walls and excludes interior structural components). For your reference, the area of the Unit, determined in accordance with those defined unit boundaries, is 2,068 square footage. Note that measurements of rooms set forth on this floor plan are generally taken at the greatest points of each given room (as if the room were a perfect rectangle), without regard for any cutouts. Accordingly, the area of the actual room will typically be smaller than the product obtained by multiplying the stated length times width. All dimensions are approximate and may vary with actual construction, and all floor plans and development plans are subject to change.

LPH 01

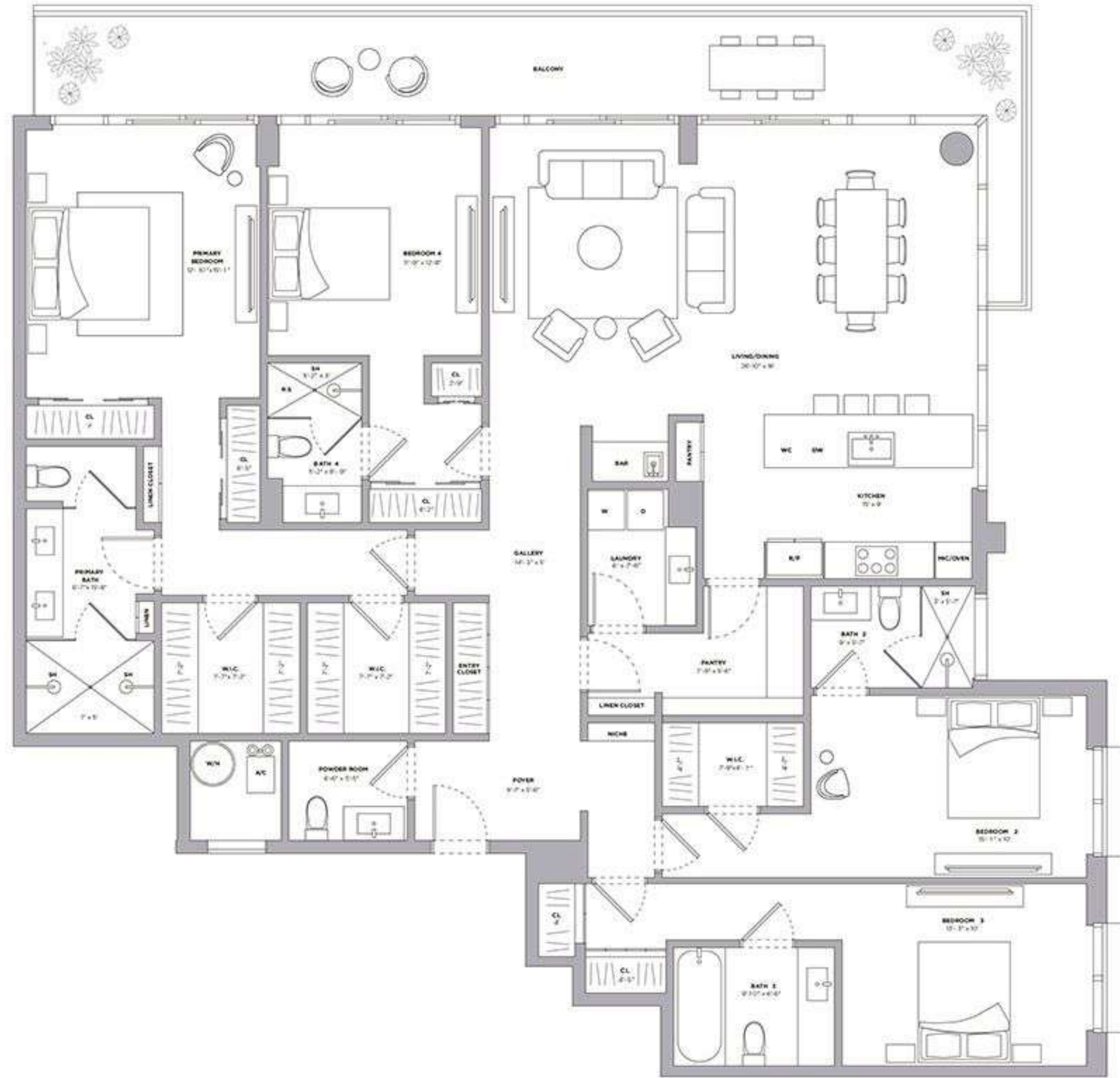
LOWER
PENTHOUSE
RESIDENCE
BAY VIEW

LEVEL 7
4 BEDROOMS
4.5 BATHROOMS

INTERIOR
2,502 SF - 232 M

EXTERIOR
320 SF - 30 M

TOTAL
2,822 SF - 262 M



Stated dimensions are measured to the exterior boundaries of the exterior walls and the centerline of interior demising walls and in fact vary from the dimensions that would be determined by using the description and definition of the "Unit" set forth in the Declaration (which generally only includes the interior airspace between the perimeter walls and excludes interior structural components). For your reference, the area of the Unit, determined in accordance with those defined unit boundaries, is 2,502 square footage. Note that measurements of rooms set forth on this floor plan are generally taken at the greatest points of each given room (as if the room were a perfect rectangle); without regard for any cutouts. Accordingly, the area of the actual room will typically be smaller than the product obtained by multiplying the stated length times width. All dimensions are approximate and may vary with actual construction, and all floor plans and development plans are subject to change.

LPH 11

LOWER PENTHOUSE RESIDENCE

BAY VIEW

LEVEL 7
4 BEDROOMS
4.5 BATHROOMS

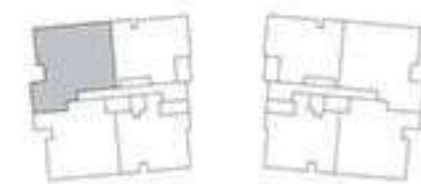
INTERIOR
2,502 SF - 232 M

EXTERIOR
320 SF - 30 M

TOTAL
2,822 SF - 262 M



BISCAYNE BAY



CITY

Stated dimensions are measured to the exterior boundaries of the exterior walls and the centerline of interior demising walls and in fact vary from the dimensions that would be determined by using the description and definition of the "Unit" set forth in the Declaration (which generally only includes the interior airspace between the perimeter walls and excludes interior structural components). For your reference, the area of the Unit, determined in accordance with those defined unit boundaries, is 2,502 square footage. Note that measurements of rooms set forth on this floor plan are generally taken at the greatest points of each given room (as if the room were a perfect rectangle); without regard for any cutouts. Accordingly, the area of the actual room will typically be smaller than the product obtained by multiplying the stated length times width. All dimensions are approximate and may vary with actual construction, and all floor plans and development plans are subject to change.

UPH 01

UPPER PENTHOUSE RESIDENCE

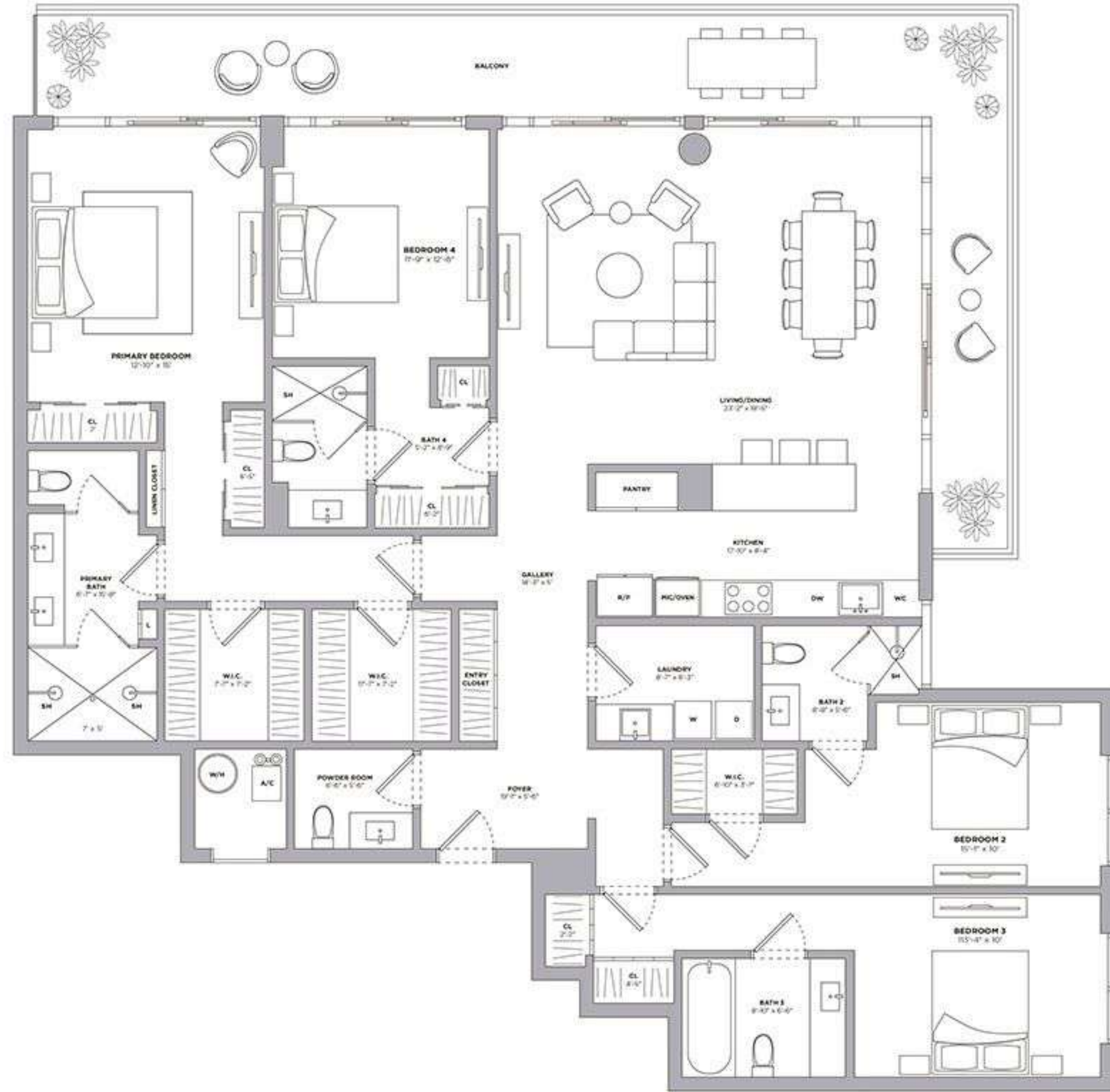
BAY VIEW

LEVEL 8
4 BEDROOMS
4.5 BATHROOMS

INTERIOR
2,378 SF - 221 M

EXTERIOR
432 SF - 40 M

TOTAL
2,810 SF - 261 M



Stated dimensions are measured to the exterior boundaries of the exterior walls and the centerline of interior demising walls and in fact vary from the dimensions that would be determined by using the description and definition of the "Unit" set forth in the Declaration (which generally only includes the interior airspace between the perimeter walls and excludes interior structural components). For your reference, the area of the Unit, determined in accordance with those defined unit boundaries, is 2,378 square footage. Note that measurements of rooms set forth on this floor plan are generally taken at the greatest points of each given room (as if the room were a perfect rectangle), without regard for any cutouts. Accordingly, the area of the actual room will typically be smaller than the product obtained by multiplying the stated length times width. All dimensions are approximate and may vary with actual construction, and all floor plans and development plans are subject to change.

UPH 11

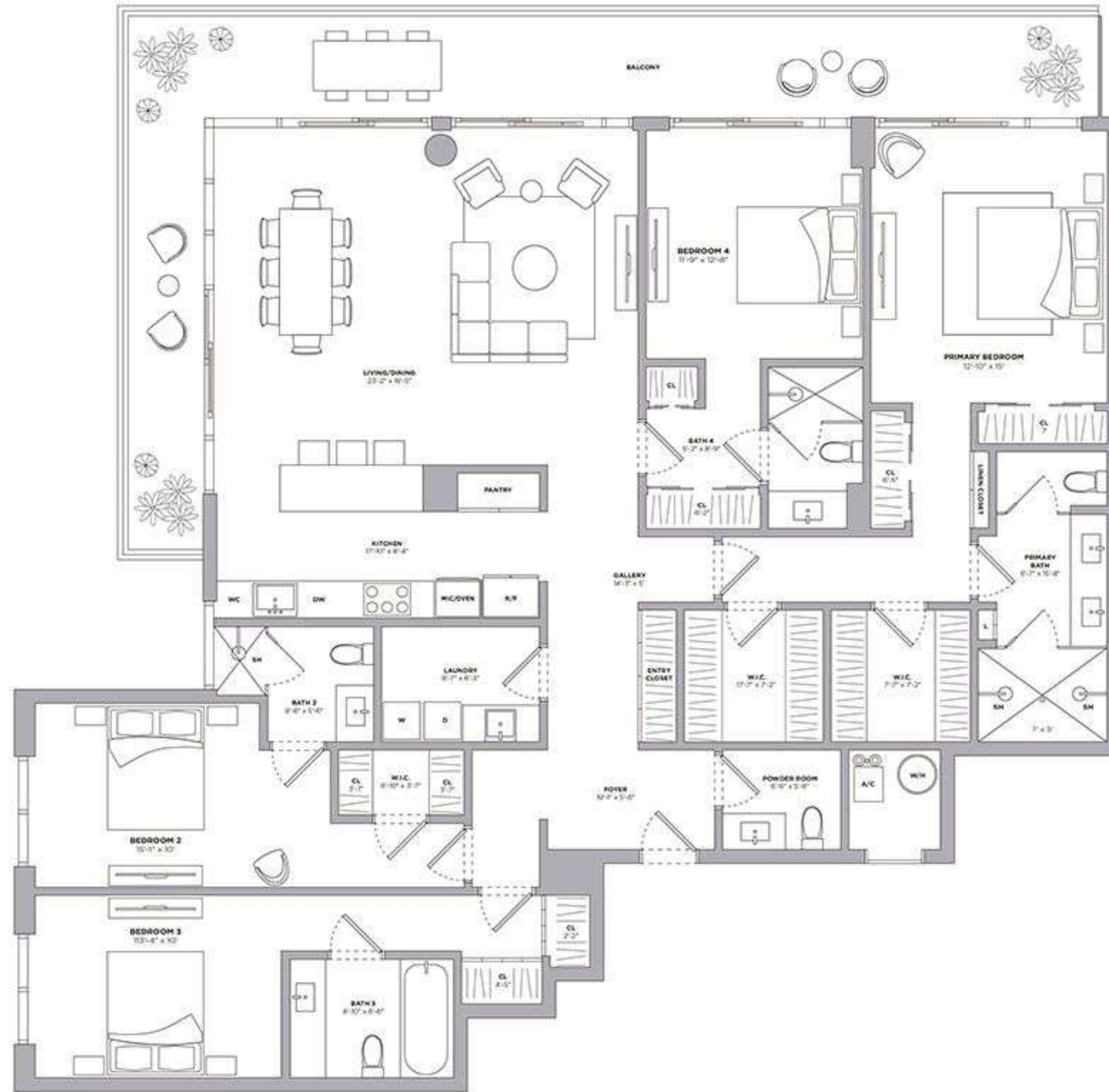
LOWER
PENTHOUSE
RESIDENCE
BAY VIEW

LEVEL 8
4 BEDROOMS
4.5 BATHROOMS

INTERIOR
2,378 SF - 221 M

EXTERIOR
432 SF - 40 M

TOTAL
2,810 SF - 261 M



Stated dimensions are measured to the exterior boundaries of the exterior walls and the centerline of interior demising walls and in fact vary from the dimensions that would be determined by using the description and definition of the "Unit" set forth in the Declaration (which generally only includes the interior airspace between the perimeter walls and excludes interior structural components). For your reference, the area of the Unit, determined in accordance with those defined unit boundaries, is 2,378 square footage. Note that measurements of rooms set forth on this floor plan are generally taken at the greatest points of each given room (as if the room were a perfect rectangle), without regard for any cutouts. Accordingly, the area of the actual room will typically be smaller than the product obtained by multiplying the stated length times width. All dimensions are approximate and may vary with actual construction, and all floor plans and development plans are subject to change.