



1 Bedroom / 1 Bathroom

Line 06

Floors 6-15

Interior

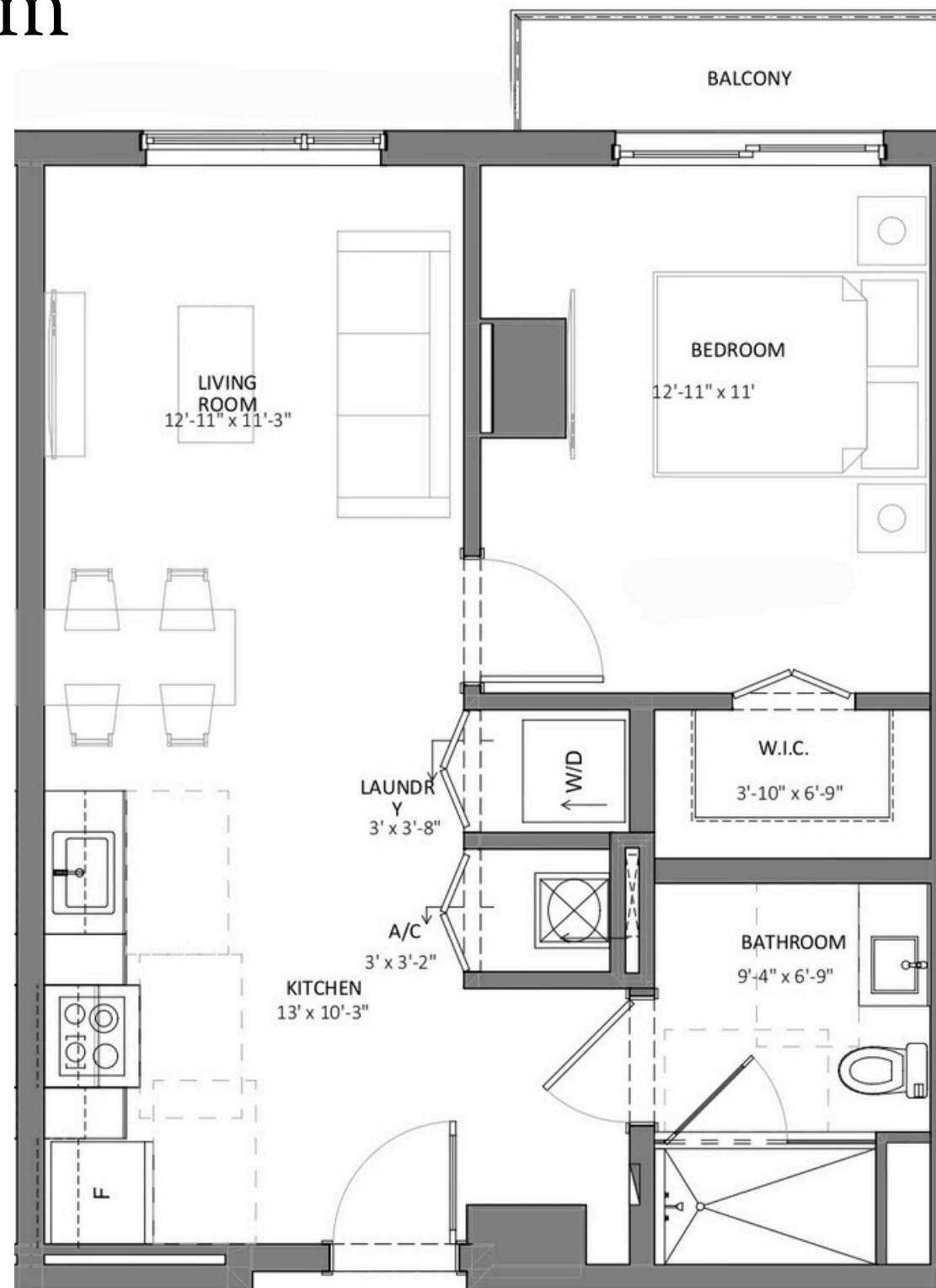
630 sf / 59 sq.m

Exterior

32 sf / 3 sq.m

Total

662 sf / 61 sq.m



Somi Walk (the "Condominium") is developed by ALTA SOMI I, LLC ("Developer") and you should only rely on the Developer's written representations. The illustrations and images are conceptual and may vary from concept to actual construction. The images are examples and do not reflect the design or decor of the completed Condominium. The floor plan, unit layout, locations of windows, floors closets, plumbing fixtures, mechanical equipment, appliances, structural elements, architectural design elements, views, and the uses configurations, and entries to rooms may change based on final approval plans, permitting, and completed construction. The furniture plan and the use of a space illustrated are suggested us only and not intended to guaranty or represent and specific use of space. Furnishings, design features, and decor illustrated and suggested uses only and not intended to guaranty or represent any specific use of space. Furnishings, design features, and decor illustrated are not included with purchase of a Unit. Certain amenities and features may require additional expense by Unit owner. There are water views, but the Condominium is not waterfront, and the views will vary depending on the Unit purchased. No view, water or otherwise, is guaranteed. Consult only the Developer's Prospectus for the Condominium to learn terms, conditions, specifications, estimated costs, Unit views, and to learn what is included with a Unit purchase and how to calculate the Unit size. The balconies depicted are conceptual and the size will vary based on final permitting and completed construction. Pursuant to the license agreement, Developer has the right to use the trade names, marks, images, and logos of Alta Development LLC for so long as the license agreement is not terminated or otherwise lapses.

Developer is not incorporated in, located in, nor a resident of, New York, or residents of any other jurisdiction were permitted by law.
Reproduction for any use is not authorized. 2024 ALTA SOMI I, LLC. Artist's renderings of development; excludes images of surrounding and neighboring buildings.





SOMI WALK
RESIDENCES

1 Bedroom / 1 Bathroom

Line 06

Unit 506

Interior

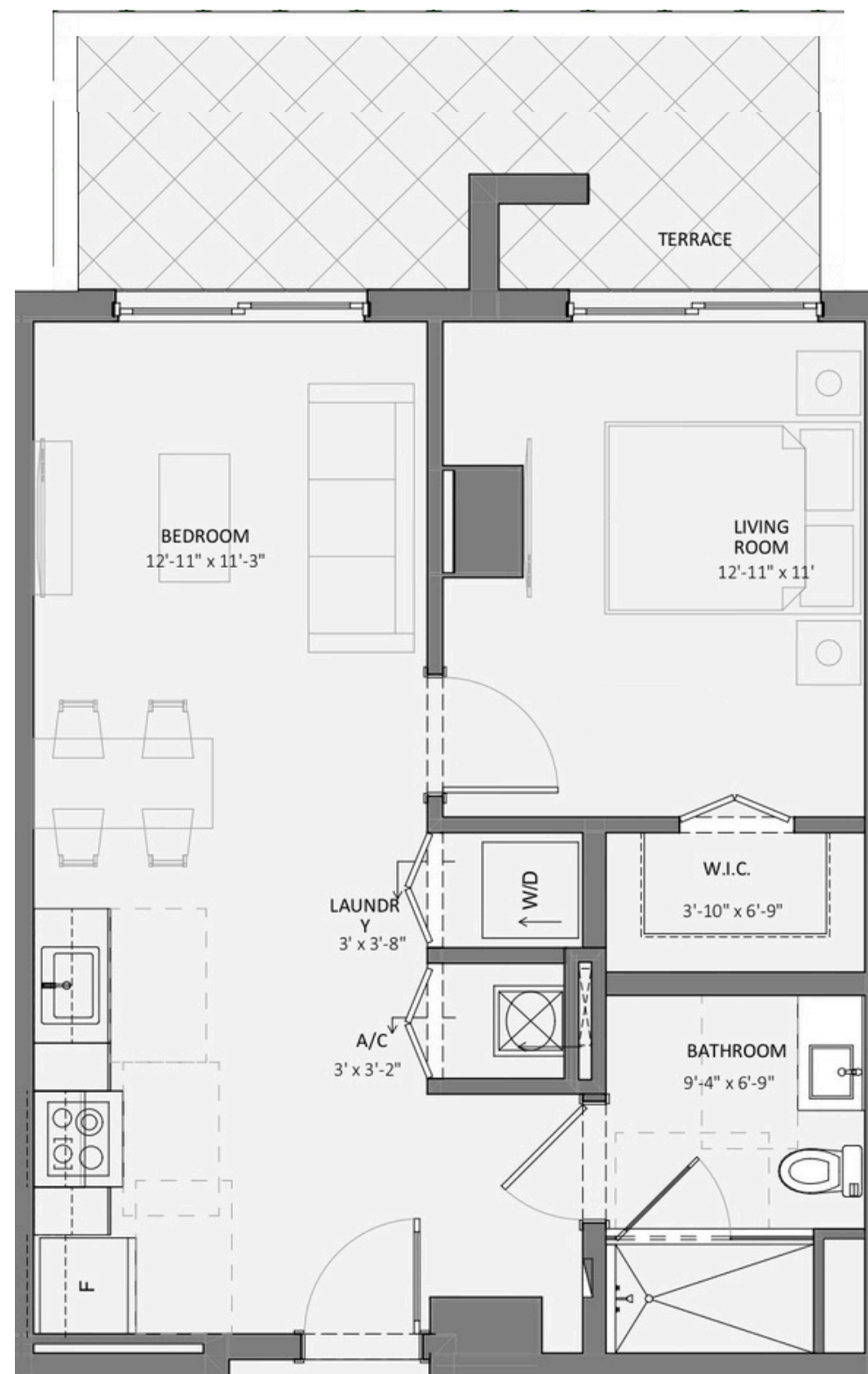
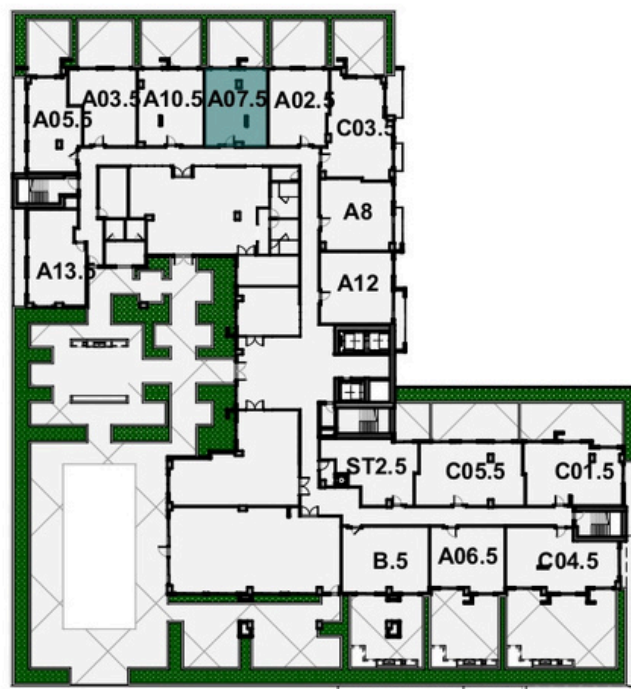
630 sf / 59 sq.m

Exterior

444 sf / 41 sq.m

Total

1,074 sf / 100 sq.m



Somi Walk (the "Condominium") is developed by ALTA SOMI I, LLC ("Developer") and you should only rely on the Developer's written representations. The illustrations and images are conceptual and may vary from concept to actual construction. The images are examples and do not reflect the design or decor of the completed Condominium. The floor plan, unit layout, locations of windows, floors closets, plumbing fixtures, mechanical equipment, appliances, structural elements, architectural design elements, views, and the uses configurations, and entries to rooms may change based on final approval plans, permitting, and completed construction. The furniture plan and the use of a space illustrated are suggested us only and not intended to guaranty or represent and specific use of space. Furnishings, design features, and decor illustrated and suggested uses only and not intended to guaranty or represent any specific use of space. Furnishings, design features, and decor illustrated are not included with purchase of a Unit. Certain amenities and features may require additional expense by Unit owner. There are water views, but the Condominium is not waterfront, and the views will vary depending on the Unit purchased. No view, water or otherwise, is guaranteed. Consult only the Developer's Prospectus for the Condominium to learn terms, conditions, specifications, estimated costs, Unit views, and to learn what is included with a Unit purchase and how to calculate the Unit size. The balconies depicted are conceptual and the size will vary based on final permitting and completed construction. Pursuant to the license agreement, Developer has the right to use the trade names, marks, images, and logos of Alta Development LLC for so long as the license agreement is not terminated or otherwise lapses.

Developer is not incorporated in, located in, nor a resident of, New York, or residents of any other jurisdiction were permitted by law.
Reproduction for any use is not authorized. 2024 ALTA SOMI I, LLC. Artist's renderings of development; excludes images of surrounding and neighboring buildings.





1 Bedroom / 1 Bathroom

Line 07

Floors 6-15

Interior

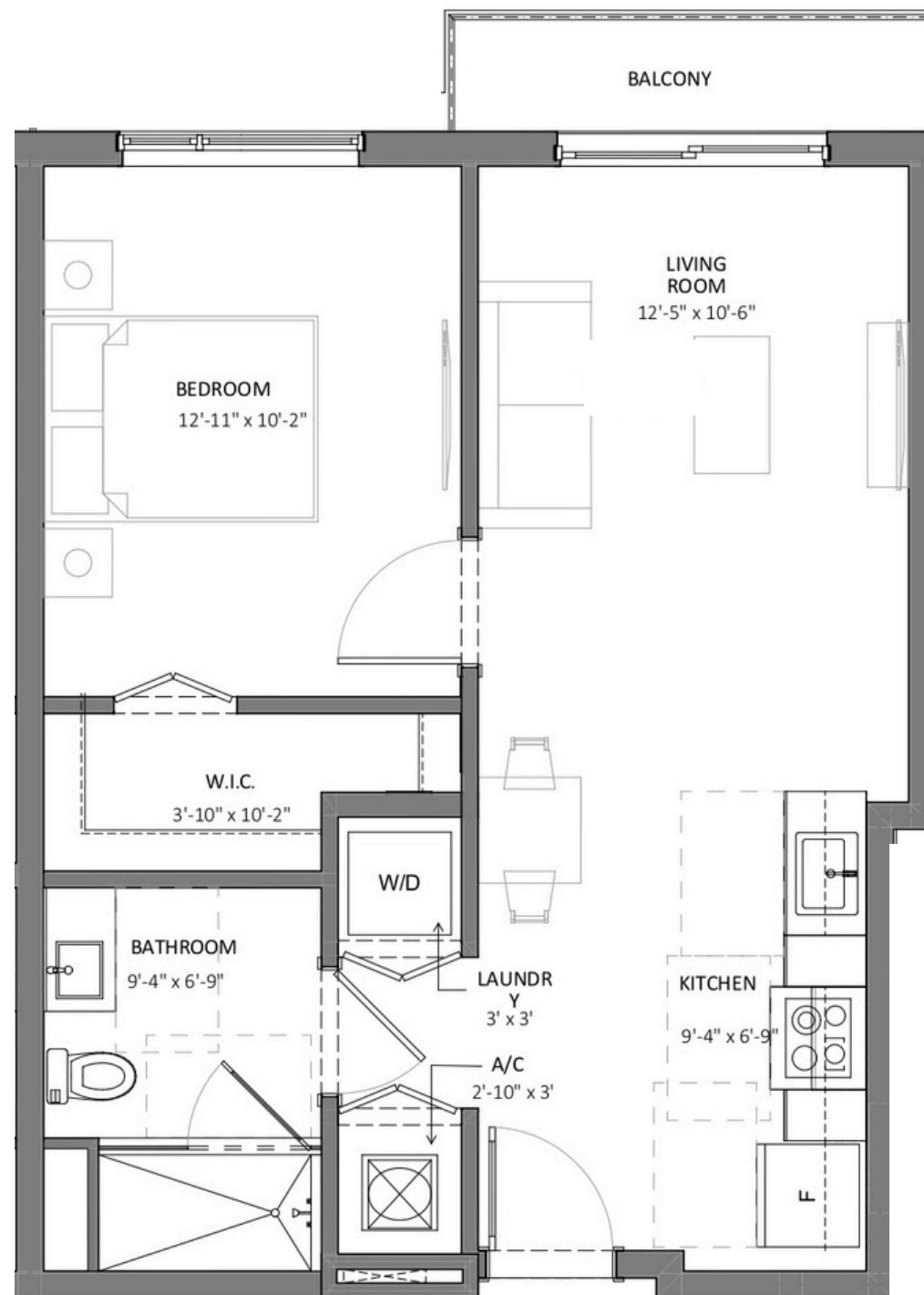
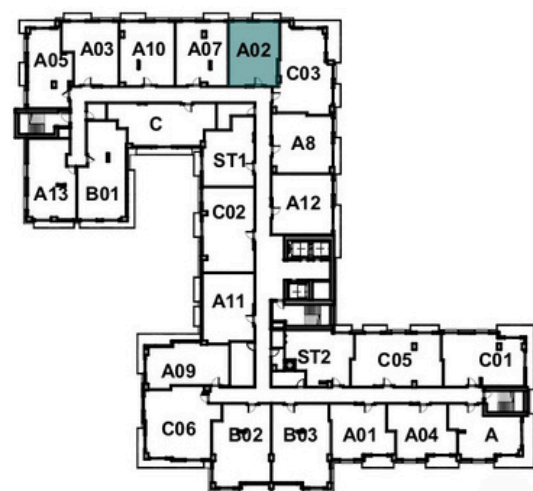
600 sf / 56 sq.m

Exterior

36 sf / 3 sq.m

Total

636 sf / 59 sq.m



Somi Walk (the "Condominium") is developed by ALTA SOMI I, LLC ("Developer") and you should only rely on the Developer's written representations. The illustrations and images are conceptual and may vary from concept to actual construction. The images are examples and do not reflect the design or decor of the completed Condominium. The floor plan, unit layout, locations of windows, floors closets, plumbing fixtures, mechanical equipment, appliances, structural elements, architectural design elements, views, and the uses configurations, and entries to rooms may change based on final approval plans, permitting, and completed construction. The furniture plan and the use of a space illustrated are suggested us only and not intended to guaranty or represent and specific use of space. Furnishings, design features, and decor illustrated and suggested uses only and not intended to guaranty or represent any specific use of space. Furnishings, design features, and decor illustrated are not included with purchase of a Unit. Certain amenities and features may require additional expense by Unit owner. There are water views, but the Condominium is not waterfront, and the views will vary depending on the Unit purchased. No view, water or otherwise, is guaranteed. Consult only the Developer's Prospectus for the Condominium to learn terms, conditions, specifications, estimated costs, Unit views, and to learn what is included with a Unit purchase and how to calculate the Unit size. The balconies depicted are conceptual and the size will vary based on final permitting and completed construction. Pursuant to the license agreement, Developer has the right to use the trade names, marks, images, and logos of Alta Development LLC for so long as the license agreement is not terminated or otherwise lapses.

Developer is not incorporated in, located in, nor a resident of, New York, or residents of any other jurisdiction were permitted by law. Reproduction for any use is not authorized. 2024 ALTA SOMI I, LLC. Artist's renderings of development; excludes images of surrounding and neighboring buildings.





1 Bedroom / 1 Bathroom

Line 07

Unit 507

Interior

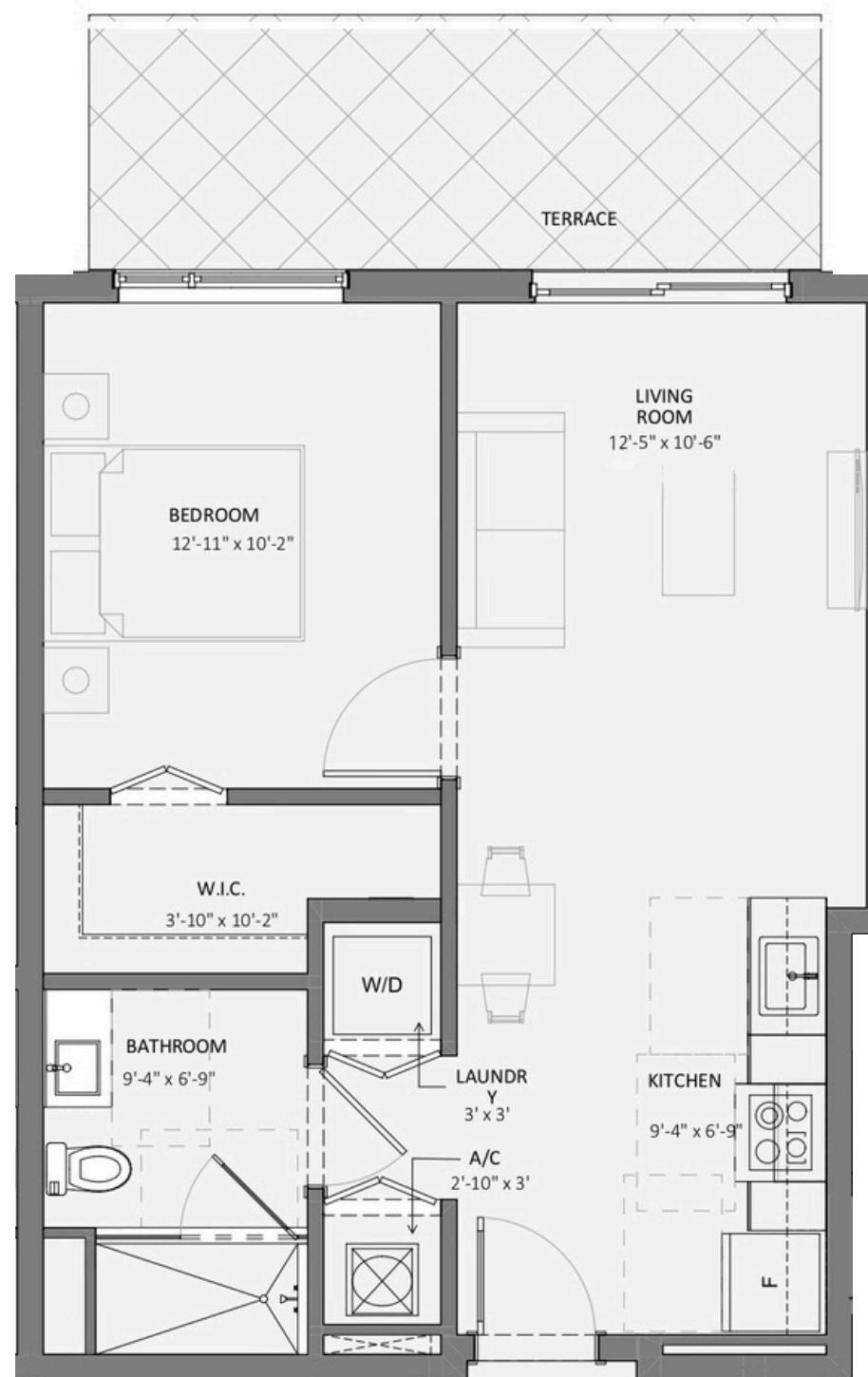
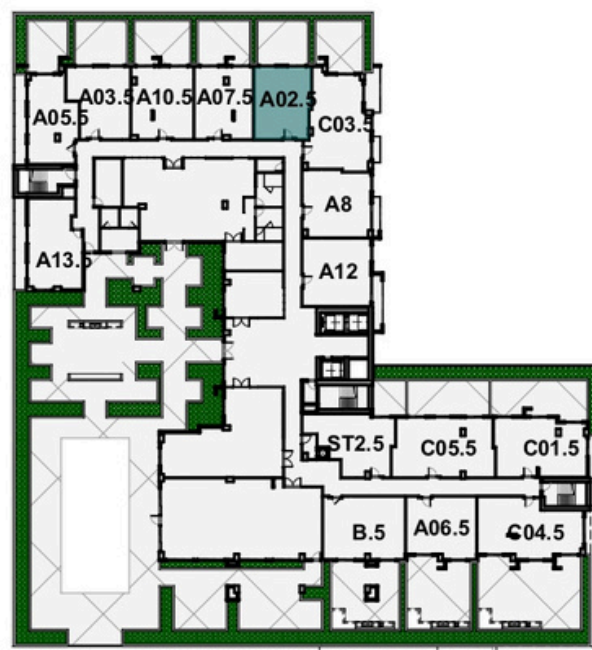
600 sf / 56 sq.m

Exterior

357 sf / 33 sq.m

Total

957 sf / 89 sq.m



Somi Walk (the "Condominium") is developed by ALTA SOMI I, LLC ("Developer") and you should only rely on the Developer's written representations. The illustrations and images are conceptual and may vary from concept to actual construction. The images are examples and do not reflect the design or decor of the completed Condominium. The floor plan, unit layout, locations of windows, floors closets, plumbing fixtures, mechanical equipment, appliances, structural elements, architectural design elements, views, and the uses configurations, and entries to rooms may change based on final approval plans, permitting, and completed construction. The furniture plan and the use of a space illustrated are suggested us only and not intended to guaranty or represent and specific use of space. Furnishings, design features, and decor illustrated and suggested uses only and not intended to guaranty or represent any specific use of space. Furnishings, design features, and decor illustrated are not included with purchase of a Unit. Certain amenities and features may require additional expense by Unit owner. There are water views, but the Condominium is not waterfront, and the views will vary depending on the Unit purchased. No view, water or otherwise, is guaranteed. Consult only the Developer's Prospectus for the Condominium to learn terms, conditions, specifications, estimated costs, Unit views, and to learn what is included with a Unit purchase and how to calculate the Unit size. The balconies depicted are conceptual and the size will vary based on final permitting and completed construction. Pursuant to the license agreement, Developer has the right to use the trade names, marks, images, and logos of Alta Development LLC for so long as the license agreement is not terminated or otherwise lapses.

Developer is not incorporated in, located in, nor a resident of, New York, or residents of any other jurisdiction were permitted by law.
Reproduction for any use is not authorized. 2024 ALTA SOMI I, LLC. Artist's renderings of development; excludes images of surrounding and neighboring buildings.





1 Bedroom / 1 Bathroom

Line 09

Floors 5-15

Interior

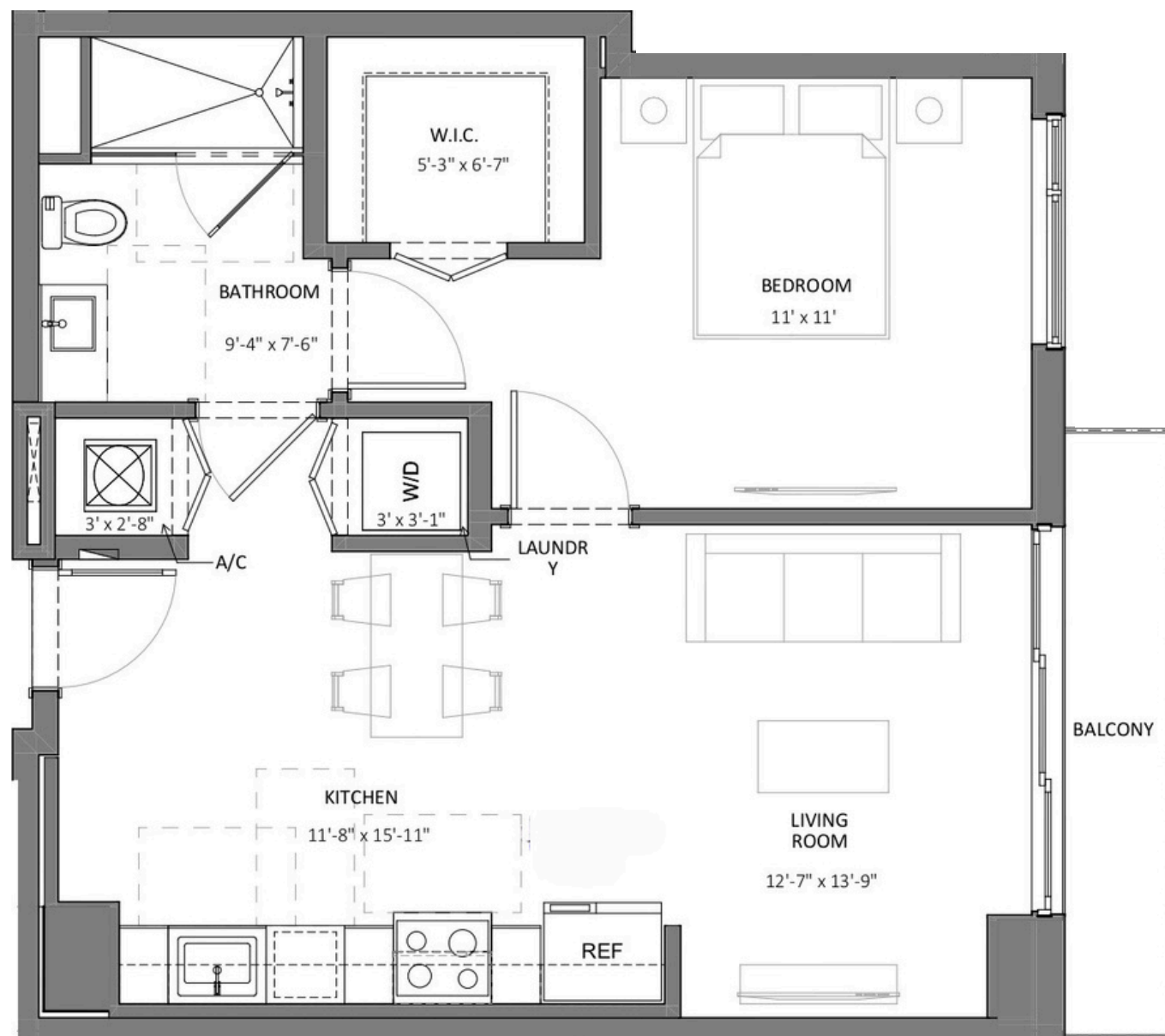
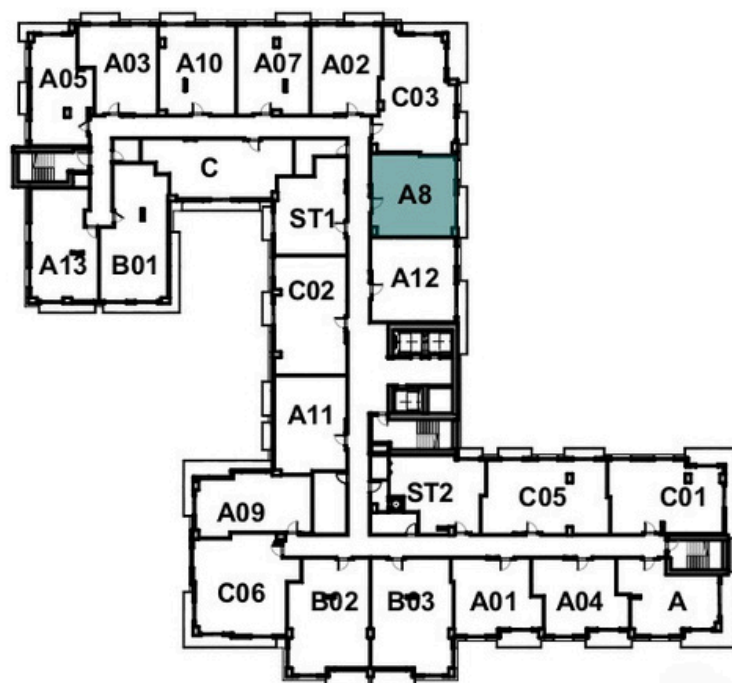
662 sf / 62 sq.m

Exterior

47 sf / 4 sq.m

Total

709 sf / 66 sq.m



Somi Walk (the "Condominium") is developed by ALTA SOMI I, LLC ("Developer") and you should only rely on the Developer's written representations. The illustrations and images are conceptual and may vary from concept to actual construction. The images are examples and do not reflect the design or decor of the completed Condominium. The floor plan, unit layout, locations of windows, floors closets, plumbing fixtures, mechanical equipment, appliances, structural elements, architectural design elements, views, and the uses configurations, and entries to rooms may change based on final approval plans, permitting, and completed construction. The furniture plan and the use of a space illustrated are suggested us only and not intended to guaranty or represent and specific use of space. Furnishings, design features, and decor illustrated and suggested uses only and not intended to guaranty or represent any specific use of space. Furnishings, design features, and decor illustrated are not included with purchase of a Unit. Certain amenities and features may require additional expense by Unit owner. There are water views, but the Condominium is not waterfront, and the views will vary depending on the Unit purchased. No view, water or otherwise, is guaranteed. Consult only the Developer's Prospectus for the Condominium to learn terms, conditions, specifications, estimated costs, Unit views, and to learn what is included with a Unit purchase and how to calculate the Unit size. The balconies depicted are conceptual and the size will vary based on final permitting and completed construction. Pursuant to the license agreement, Developer has the right to use the trade names, marks, images, and logos of Alta Development LLC for so long as the license agreement is not terminated or otherwise lapses.

Developer is not incorporated in, located in, nor a resident of, New York, or residents of any other jurisdiction were permitted by law.
Reproduction for any use is not authorized. 2024 ALTA SOMI I, LLC. Artist's renderings of development; excludes images of surrounding and neighboring buildings.





1 Bedroom / 1 Bathroom

Line 10

Floors 5-15

Interior

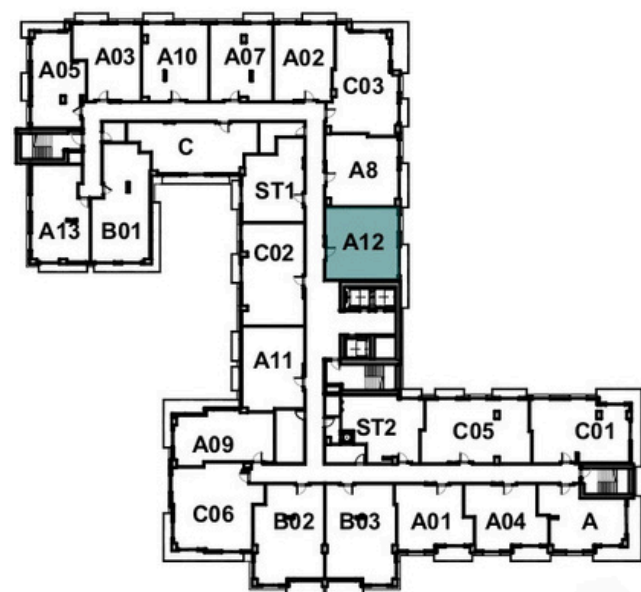
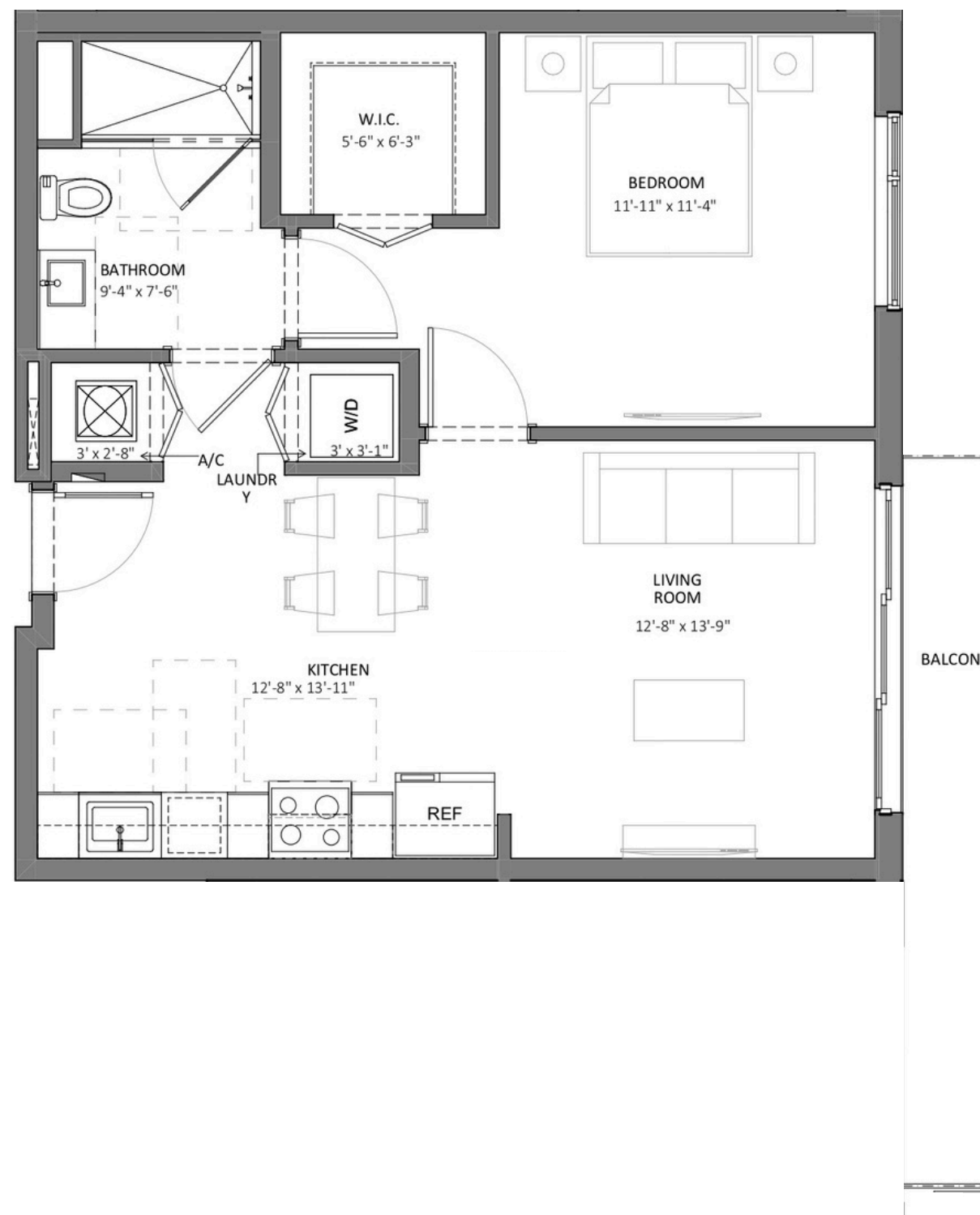
694 sf / 64 sq.m

Exterior

66 sf / 6 sq.m

Total

760 sf / 71 sq.m



Somi Walk (the "Condominium") is developed by ALTA SOMI I, LLC ("Developer") and you should only rely on the Developer's written representations. The illustrations and images are conceptual and may vary from concept to actual construction. The images are examples and do not reflect the design or decor of the completed Condominium. The floor plan, unit layout, locations of windows, floors closets, plumbing fixtures, mechanical equipment, appliances, structural elements, architectural design elements, views, and the uses configurations, and entries to rooms may change based on final approval plans, permitting, and completed construction. The furniture plan and the use of a space illustrated are suggested us only and not intended to guaranty or represent and specific use of space. Furnishings, design features, and decor illustrated and suggested uses only and not intended to guaranty or represent any specific use of space. Furnishings, design features, and decor illustrated are not included with purchase of a Unit. Certain amenities and features may require additional expense by Unit owner. There are water views, but the Condominium is not waterfront, and the views will vary depending on the Unit purchased. No view, water or otherwise, is guaranteed. Consult only the Developer's Prospectus for the Condominium to learn terms, conditions, specifications, estimated costs, Unit views, and to learn what is included with a Unit purchase and how to calculate the Unit size. The balconies depicted are conceptual and the size will vary based on final permitting and completed construction. Pursuant to the license agreement, Developer has the right to use the trade names, marks, images, and logos of Alta Development LLC for so long as the license agreement is not terminated or otherwise lapses.

Developer is not incorporated in, located in, nor a resident of, New York, or residents of any other jurisdiction were permitted by law.
 Reproduction for any use is not authorized. 2024 ALTA SOMI I, LLC. Artist's renderings of development; excludes images of surrounding and neighboring buildings.



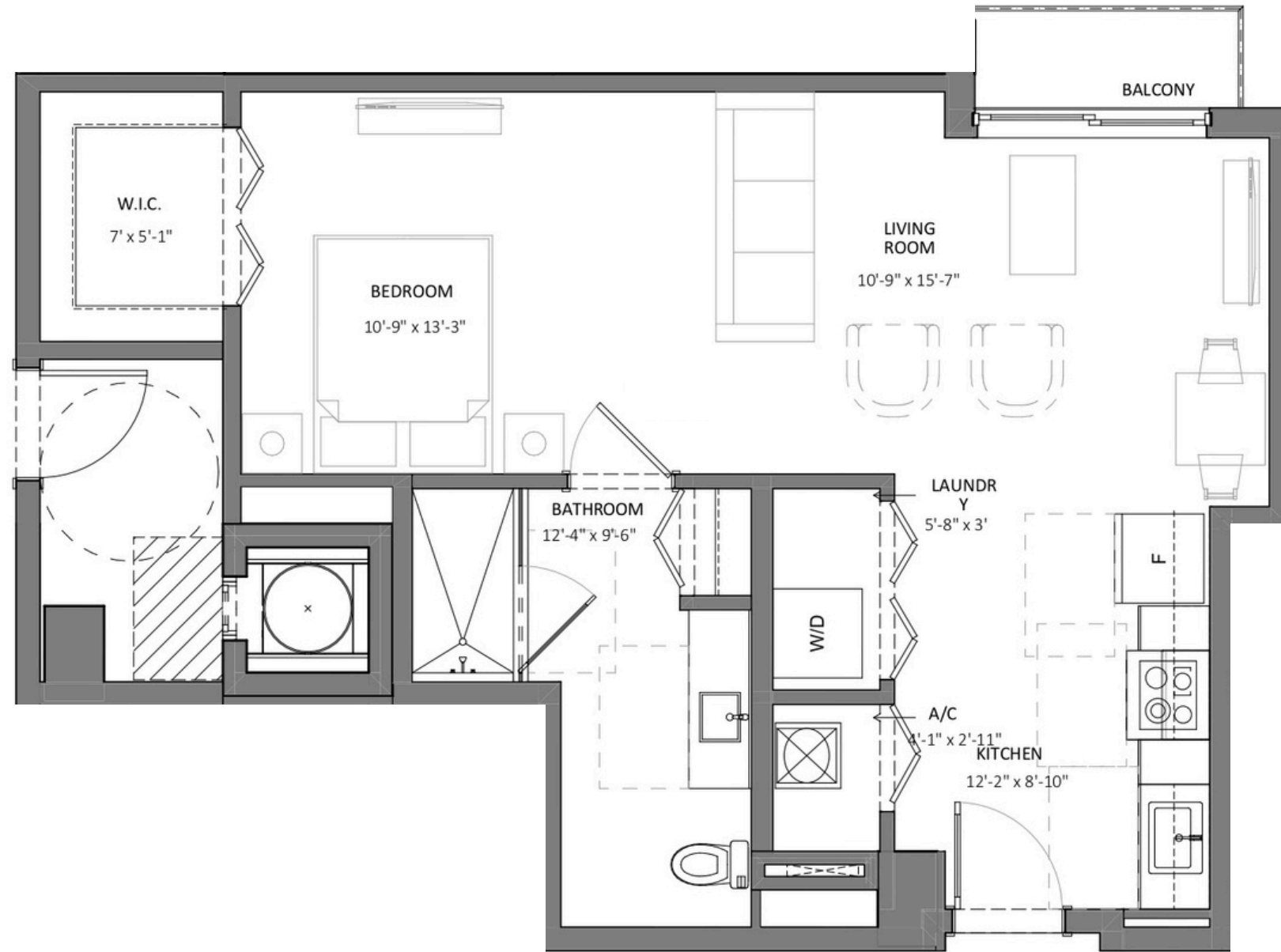
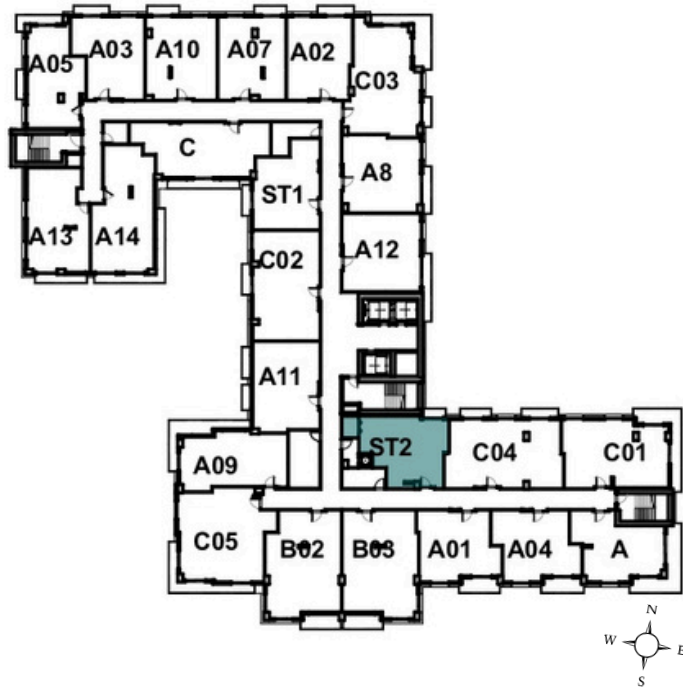
Junior Suite

Line 11
Floors 6-15

Interior
661 sf / 61 sq.m

Exterior
23 sf / 2 sq.m

Total
684 sf / 64 sq.m



Somi Walk (the "Condominium") is developed by ALTA SOMI I, LLC ("Developer") and you should only rely on the Developer's written representations. The illustrations and images are conceptual and may vary from concept to actual construction. The images are examples and do not reflect the design or decor of the completed Condominium. The floor plan, unit layout, locations of windows, floors closets, plumbing fixtures, mechanical equipment, appliances, structural elements, architectural design elements, views, and the uses configurations, and entries to rooms may change based on final approval plans, permitting, and completed construction. The furniture plan and the use of a space illustrated are suggested us only and not intended to guaranty or represent and specific use of space. Furnishings, design features, and decor illustrated and suggested uses only and not intended to guaranty or represent any specific use of space. Furnishings, design features, and decor illustrated are not included with purchase of a Unit. Certain amenities and features may require additional expense by Unit owner. There are water views, but the Condominium is not waterfront, and the views will vary depending on the Unit purchased. No view, water or otherwise, is guaranteed. Consult only the Developer's Prospectus for the Condominium to learn terms, conditions, specifications, estimated costs, Unit views, and to learn what is included with a Unit purchase and how to calculate the Unit size. The balconies depicted are conceptual and the size will vary based on final permitting and completed construction. Pursuant to the license agreement, Developer has the right to use the trade names, marks, images, and logos of Alta Development LLC for so long as the license agreement is not terminated or otherwise lapses.

Developer is not incorporated in, located in, nor a resident of, New York, or residents of any other jurisdiction were permitted by law.
Reproduction for any use is not authorized. 2024 ALTA SOMI I, LLC. Artist's renderings of development; excludes images of surrounding and neighboring buildings.





Junior Suite

Unit 511

Floor 5

Interior

661 sf / 61 sq.m

Exterior

162 sf / 15 sq.m

Total

823 sf / 76 sq.m



Somi Walk (the "Condominium") is developed by ALTA SOMI I, LLC ("Developer") and you should only rely on the Developer's written representations. The illustrations and images are conceptual and may vary from concept to actual construction. The images are examples and do not reflect the design or decor of the completed Condominium. The floor plan, unit layout, locations of windows, floors closets, plumbing fixtures, mechanical equipment, appliances, structural elements, architectural design elements, views, and the uses configurations, and entries to rooms may change based on final approval plans, permitting, and completed construction. The furniture plan and the use of a space illustrated are suggested us only and not intended to guaranty or represent and specific use of space. Furnishings, design features, and decor illustrated and suggested uses only and not intended to guaranty or represent any specific use of space. Furnishings, design features, and decor illustrated are not included with purchase of a Unit. Certain amenities and features may require additional expense by Unit owner. There are water views, but the Condominium is not waterfront, and the views will vary depending on the Unit purchased. No view, water or otherwise, is guaranteed. Consult only the Developer's Prospectus for the Condominium to learn terms, conditions, specifications, estimated costs, Unit views, and to learn what is included with a Unit purchase and how to calculate the Unit size. The balconies depicted are conceptual and the size will vary based on final permitting and completed construction. Pursuant to the license agreement, Developer has the right to use the trade names, marks, images, and logos of Alta Development LLC for so long as the license agreement is not terminated or otherwise lapses.

Developer is not incorporated in, located in, nor a resident of, New York, or residents of any other jurisdiction were permitted by law. Reproduction for any use is not authorized. 2024 ALTA SOMI I, LLC. Artist's renderings of development; excludes images of surrounding and neighboring buildings.





1 Bedroom / 1 Bathroom

Line 14

Floors 7-15

Interior

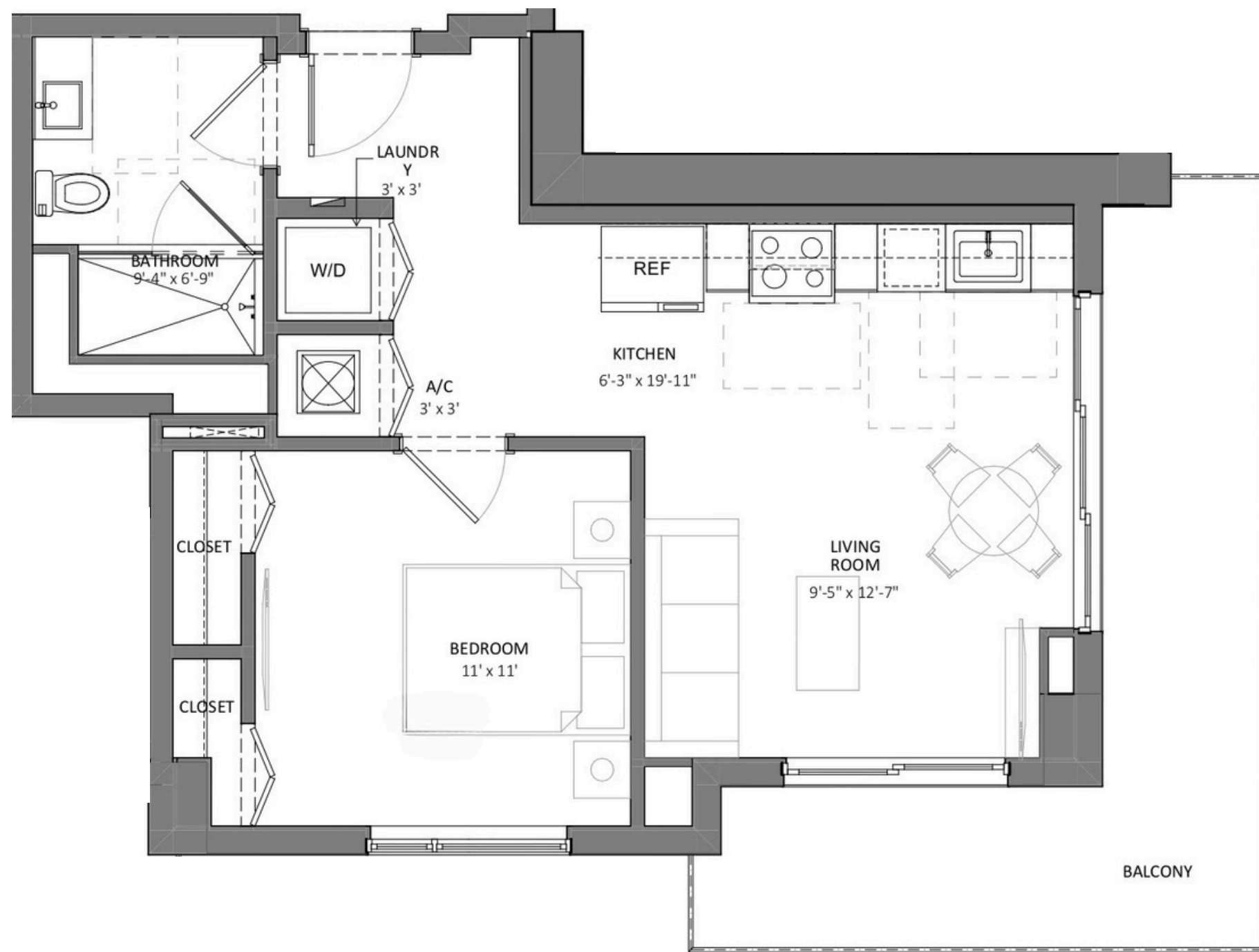
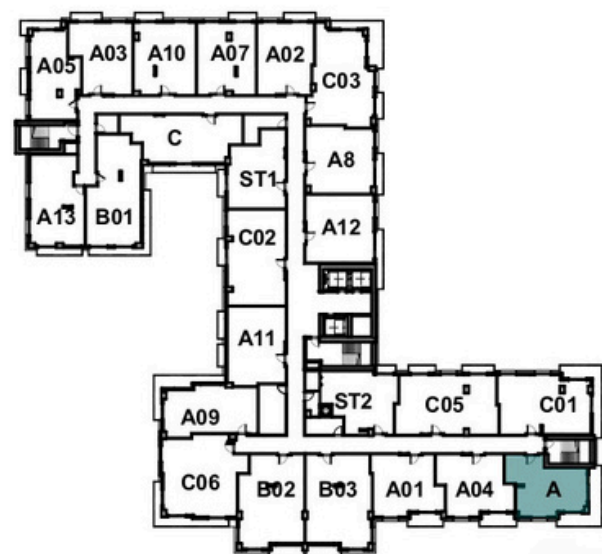
597 sf / 55 sq.m

Exterior

170 sf / 16 sq.m

Total

768 sf / 71 sq.m



Somi Walk (the "Condominium") is developed by ALTA SOMI I, LLC ("Developer") and you should only rely on the Developer's written representations. The illustrations and images are conceptual and may vary from concept to actual construction. The images are examples and do not reflect the design or decor of the completed Condominium. The floor plan, unit layout, locations of windows, floors closets, plumbing fixtures, mechanical equipment, appliances, structural elements, architectural design elements, views, and the uses configurations, and entries to rooms may change based on final approval plans, permitting, and completed construction. The furniture plan and the use of a space illustrated are suggested us only and not intended to guaranty or represent and specific use of space. Furnishings, design features, and decor illustrated and suggested uses only and not intended to guaranty or represent any specific use of space. Furnishings, design features, and decor illustrated are not included with purchase of a Unit. Certain amenities and features may require additional expense by Unit owner. There are water views, but the Condominium is not waterfront, and the views will vary depending on the Unit purchased. No view, water or otherwise, is guaranteed. Consult only the Developer's Prospectus for the Condominium to learn terms, conditions, specifications, estimated costs, Unit views, and to learn what is included with a Unit purchase and how to calculate the Unit size. The balconies depicted are conceptual and the size will vary based on final permitting and completed construction. Pursuant to the license agreement, Developer has the right to use the trade names, marks, images, and logos of Alta Development LLC for so long as the license agreement is not terminated or otherwise lapses.

Developer is not incorporated in, located in, nor a resident of, New York, or residents of any other jurisdiction were permitted by law. Reproduction for any use is not authorized. 2024 ALTA SOMI I, LLC. Artist's renderings of development; excludes images of surrounding and neighboring buildings.





1 Bedroom / 1 Bathroom

Line 15

Floors 7-15

Interior

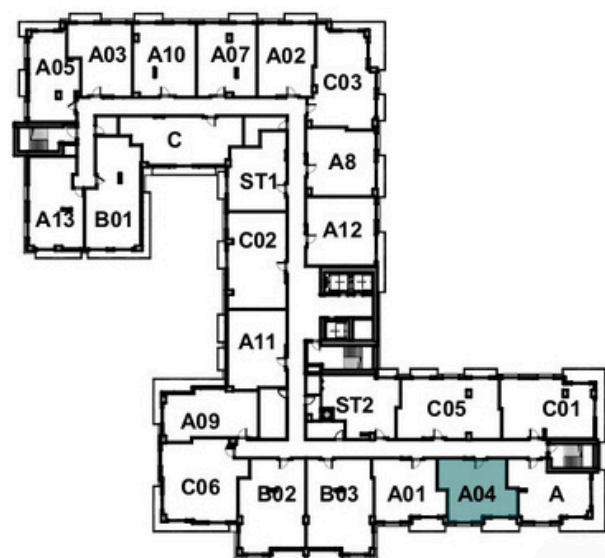
612 sf / 57 sq.m

Exterior

66 sf / 6 sq.m

Total

678 sf / 63 sq.m



Somi Walk (the "Condominium") is developed by ALTA SOMI I, LLC ("Developer") and you should only rely on the Developer's written representations. The illustrations and images are conceptual and may vary from concept to actual construction. The images are examples and do not reflect the design or decor of the completed Condominium. The floor plan, unit layout, locations of windows, floors closets, plumbing fixtures, mechanical equipment, appliances, structural elements, architectural design elements, views, and the uses configurations, and entries to rooms may change based on final approval plans, permitting, and completed construction. The furniture plan and the use of a space illustrated are suggested us only and not intended to guaranty or represent and specific use of space. Furnishings, design features, and decor illustrated and suggested uses only and not intended to guaranty or represent any specific use of space. Furnishings, design features, and decor illustrated are not included with purchase of a Unit. Certain amenities and features may require additional expense by Unit owner. There are water views, but the Condominium is not waterfront, and the views will vary depending on the Unit purchased. No view, water or otherwise, is guaranteed. Consult only the Developer's Prospectus for the Condominium to learn terms, conditions, specifications, estimated costs, Unit views, and to learn what is included with a Unit purchase and how to calculate the Unit size. The balconies depicted are conceptual and the size will vary based on final permitting and completed construction. Pursuant to the license agreement, Developer has the right to use the trade names, marks, images, and logos of Alta Development LLC for so long as the license agreement is not terminated or otherwise lapses.

Developer is not incorporated in, located in, nor a resident of, New York, or residents of any other jurisdiction were permitted by law. Reproduction for any use is not authorized. 2024 ALTA SOMI I, LLC. Artist's renderings of development; excludes images of surrounding and neighboring buildings.



1 Bedroom / 1 Bathroom

Line 15
Unit 515

Interior
625 sf / 58 sq.m

Exterior
679 sf / 63 sq.m

Total
1304 sf / 121 sq.m



Somi Walk (the "Condominium") is developed by ALTA SOMI I, LLC ("Developer") and you should only rely on the Developer's written representations. The illustrations and images are conceptual and may vary from concept to actual construction. The images are examples and do not reflect the design or decor of the completed Condominium. The floor plan, unit layout, locations of windows, floors closets, plumbing fixtures, mechanical equipment, appliances, structural elements, architectural design elements, views, and the uses configurations, and entries to rooms may change based on final approval plans, permitting, and completed construction. The furniture plan and the use of a space illustrated are suggested us only and not intended to guaranty or represent and specific use of space. Furnishings, design features, and decor illustrated and suggested uses only and not intended to guaranty or represent any specific use of space. Furnishings, design features, and decor illustrated are not included with purchase of a Unit. Certain amenities and features may require additional expense by Unit owner. There are water views, but the Condominium is not waterfront, and the views will vary depending on the Unit purchased. No view, water or otherwise, is guaranteed. Consult only the Developer's Prospectus for the Condominium to learn terms, conditions, specifications, estimated costs, Unit views, and to learn what is included with a Unit purchase and how to calculate the Unit size. The balconies depicted are conceptual and the size will vary based on final permitting and completed construction. Pursuant to the license agreement, Developer has the right to use the trade names, marks, images, and logos of Alta Development LLC for so long as the license agreement is not terminated or otherwise lapses.

Developer is not incorporated in, located in, nor a resident of, New York, or residents of any other jurisdiction were permitted by law. Reproduction for any use is not authorized. 2024 ALTA SOMI I, LLC. Artist's renderings of development; excludes images of surrounding and neighboring buildings.





1 Bedroom / 1 Bathroom

Line 15

Unit 615

Interior

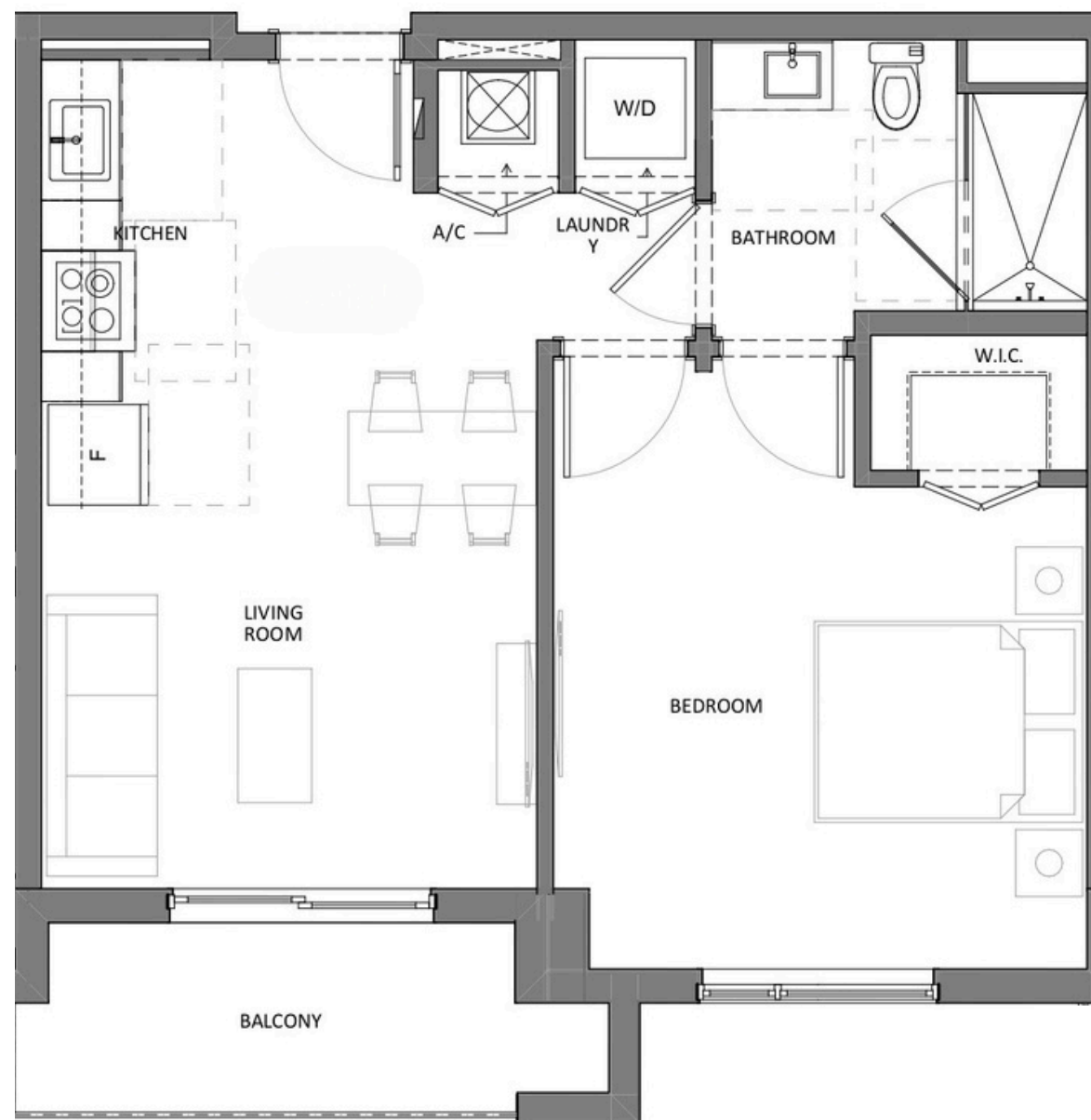
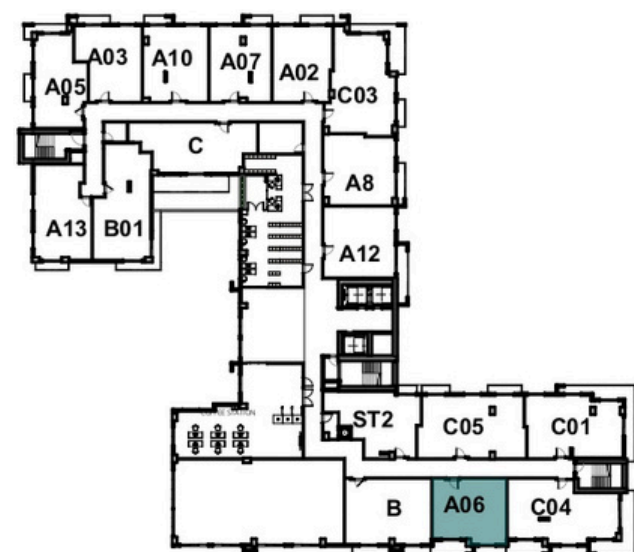
625 sf / 58 sq.m

Exterior

70 sf / 6 sq.m

Total

695 sf / 65 sq.m



Somi Walk (the "Condominium") is developed by ALTA SOMI I, LLC ("Developer") and you should only rely on the Developer's written representations. The illustrations and images are conceptual and may vary from concept to actual construction. The images are examples and do not reflect the design or decor of the completed Condominium. The floor plan, unit layout, locations of windows, floors closets, plumbing fixtures, mechanical equipment, appliances, structural elements, architectural design elements, views, and the uses configurations, and entries to rooms may change based on final approval plans, permitting, and completed construction. The furniture plan and the use of a space illustrated are suggested us only and not intended to guaranty or represent and specific use of space. Furnishings, design features, and decor illustrated and suggested uses only and not intended to guaranty or represent any specific use of space. Furnishings, design features, and decor illustrated are not included with purchase of a Unit. Certain amenities and features may require additional expense by Unit owner. There are water views, but the Condominium is not waterfront, and the views will vary depending on the Unit purchased. No view, water or otherwise, is guaranteed. Consult only the Developer's Prospectus for the Condominium to learn terms, conditions, specifications, estimated costs, Unit views, and to learn what is included with a Unit purchase and how to calculate the Unit size. The balconies depicted are conceptual and the size will vary based on final permitting and completed construction. Pursuant to the license agreement, Developer has the right to use the trade names, marks, images, and logos of Alta Development LLC for so long as the license agreement is not terminated or otherwise lapses.

Developer is not incorporated in, located in, nor a resident of, New York, or residents of any other jurisdiction were permitted by law.
Reproduction for any use is not authorized. 2024 ALTA SOMI I, LLC. Artist's renderings of development; excludes images of surrounding and neighboring buildings.





1 Bedroom / 1 Bathroom

Line 16

Floors 7-15

Interior

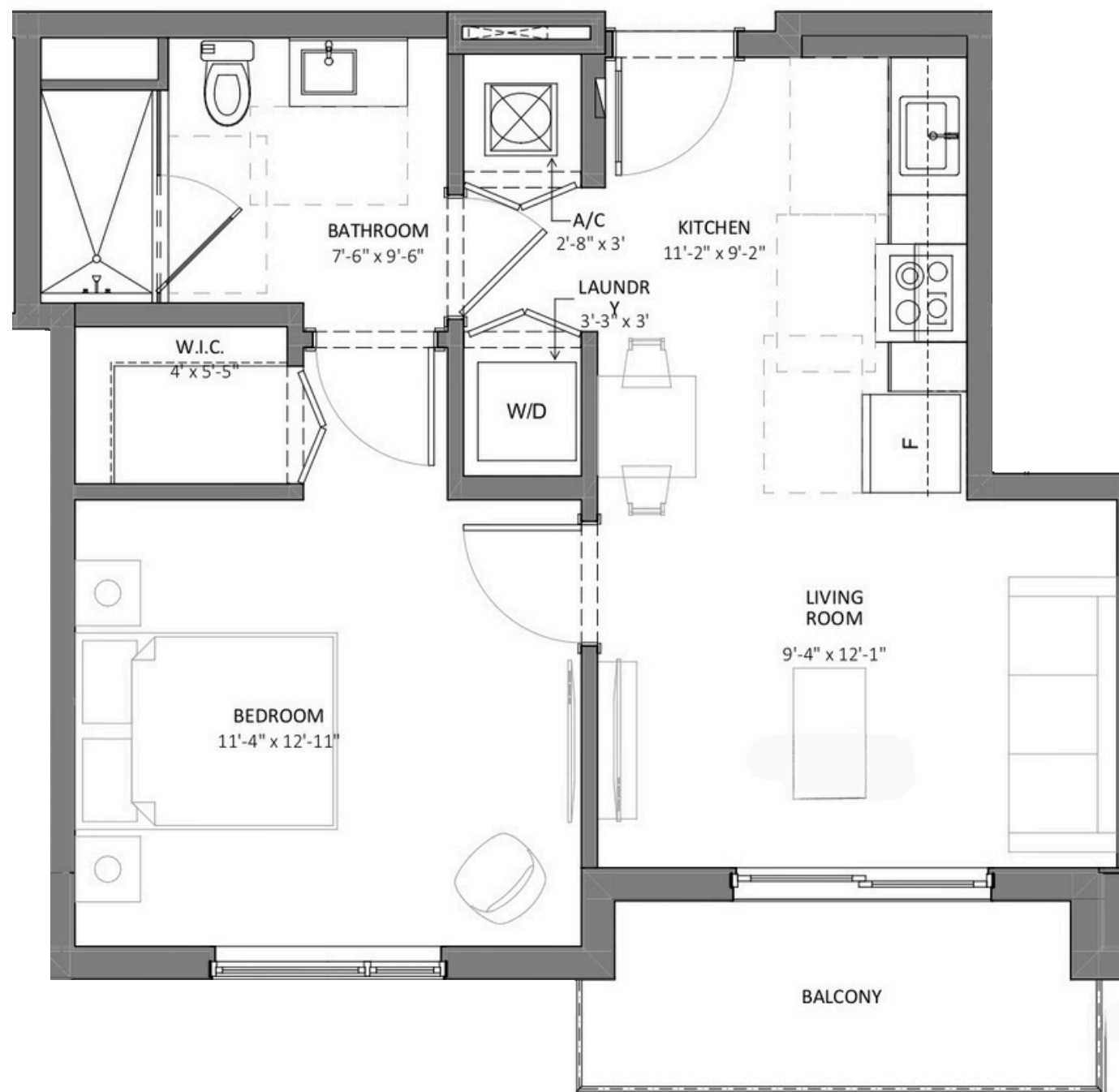
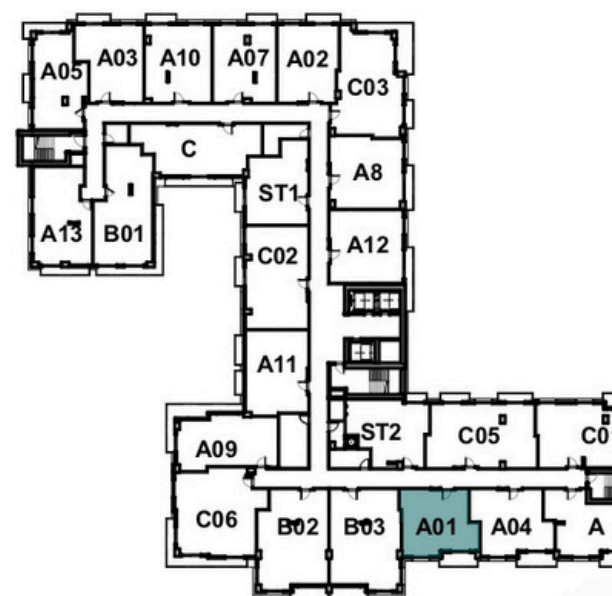
600 sf / 56 sq.m

Exterior

63 sf / 6 sq.m

Total

663 sf / 62 sq.m



Somi Walk (the "Condominium") is developed by ALTA SOMI I, LLC ("Developer") and you should only rely on the Developer's written representations. The illustrations and images are conceptual and may vary from concept to actual construction. The images are examples and do not reflect the design or decor of the completed Condominium. The floor plan, unit layout, locations of windows, floors closets, plumbing fixtures, mechanical equipment, appliances, structural elements, architectural design elements, views, and the uses configurations, and entries to rooms may change based on final approval plans, permitting, and completed construction. The furniture plan and the use of a space illustrated are suggested us only and not intended to guaranty or represent and specific use of space. Furnishings, design features, and decor illustrated and suggested uses only and not intended to guaranty or represent any specific use of space. Furnishings, design features, and decor illustrated are not included with purchase of a Unit. Certain amenities and features may require additional expense by Unit owner. There are water views, but the Condominium is not waterfront, and the views will vary depending on the Unit purchased. No view, water or otherwise, is guaranteed. Consult only the Developer's Prospectus for the Condominium to learn terms, conditions, specifications, estimated costs, Unit views, and to learn what is included with a Unit purchase and how to calculate the Unit size. The balconies depicted are conceptual and the size will vary based on final permitting and completed construction. Pursuant to the license agreement, Developer has the right to use the trade names, marks, images, and logos of Alta Development LLC for so long as the license agreement is not terminated or otherwise lapses.

Developer is not incorporated in, located in, nor a resident of, New York, or residents of any other jurisdiction were permitted by law.
Reproduction for any use is not authorized. 2024 ALTA SOMI I, LLC. Artist's renderings of development; excludes images of surrounding and neighboring buildings.





1 Bedroom / 1 Bathroom

Line 20

Floors 7-15

Interior

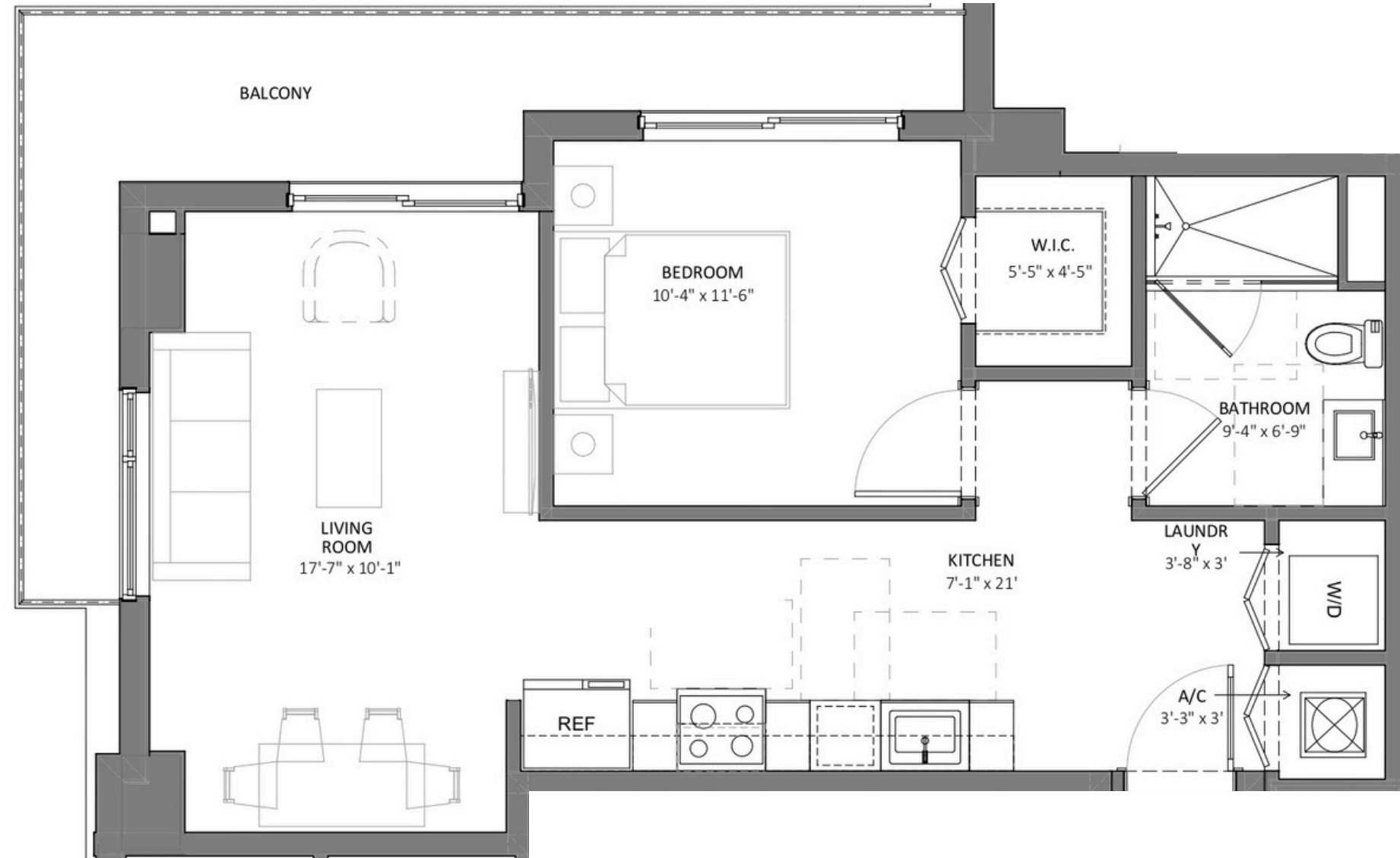
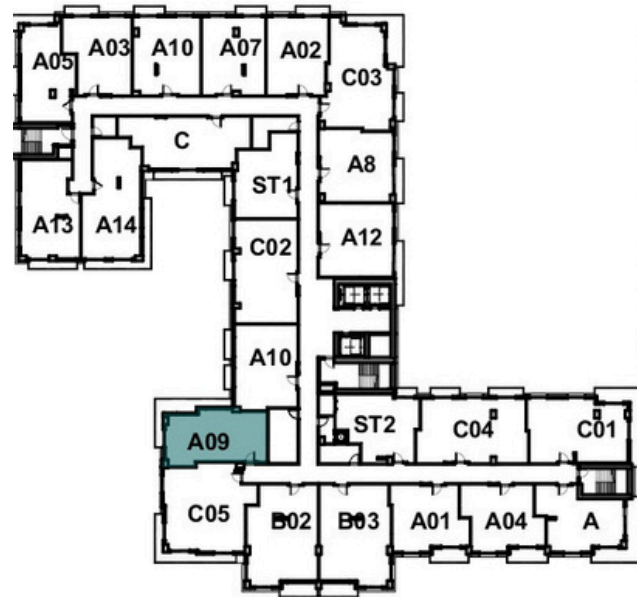
659 sf / 61 sq.m

Exterior

125 sf / 12 sq.m

Total

784 sf / 73 sq.m



Somi Walk (the "Condominium") is developed by ALTA SOMI I, LLC ("Developer") and you should only rely on the Developer's written representations. The illustrations and images are conceptual and may vary from concept to actual construction. The images are examples and do not reflect the design or decor of the completed Condominium. The floor plan, unit layout, locations of windows, floors closets, plumbing fixtures, mechanical equipment, appliances, structural elements, architectural design elements, views, and the uses configurations, and entries to rooms may change based on final approval plans, permitting, and completed construction. The furniture plan and the use of a space illustrated are suggested us only and not intended to guaranty or represent and specific use of space. Furnishings, design features, and decor illustrated and suggested uses only and not intended to guaranty or represent any specific use of space. Furnishings, design features, and decor illustrated are not included with purchase of a Unit. Certain amenities and features may require additional expense by Unit owner. There are water views, but the Condominium is not waterfront, and the views will vary depending on the Unit purchased. No view, water or otherwise, is guaranteed. Consult only the Developer's Prospectus for the Condominium to learn terms, conditions, specifications, estimated costs, Unit views, and to learn what is included with a Unit purchase and how to calculate the Unit size. The balconies depicted are conceptual and the size will vary based on final permitting and completed construction. Pursuant to the license agreement, Developer has the right to use the trade names, marks, images, and logos of Alta Development LLC for so long as the license agreement is not terminated or otherwise lapses.

Developer is not incorporated in, located in, nor a resident of, New York, or residents of any other jurisdiction were permitted by law. Reproduction for any use is not authorized. 2024 ALTA SOMI I, LLC. Artist's renderings of development; excludes images of surrounding and neighboring buildings.





1 Bedroom / 1 Bathroom

Line 21

Floors 7-15

Interior

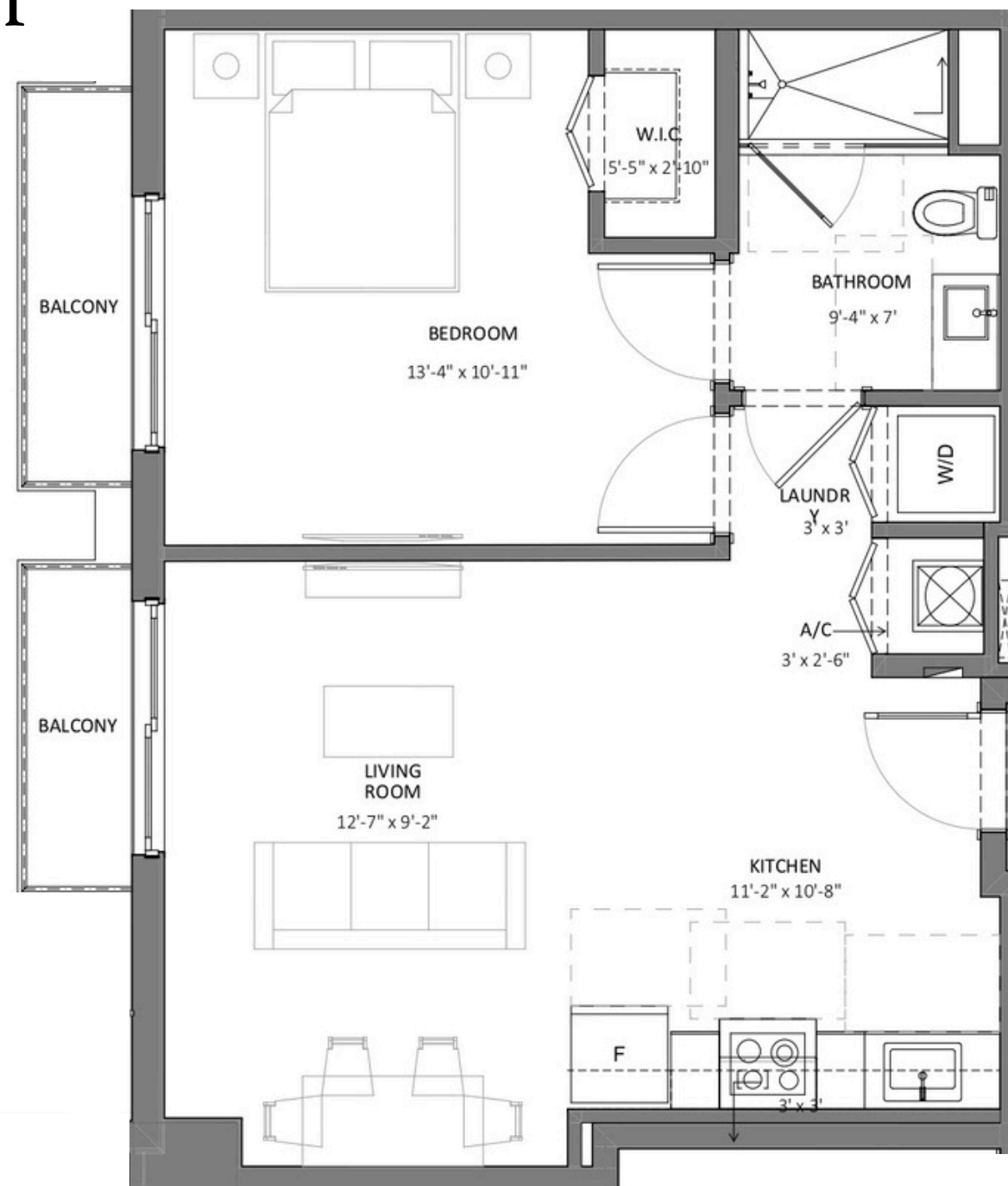
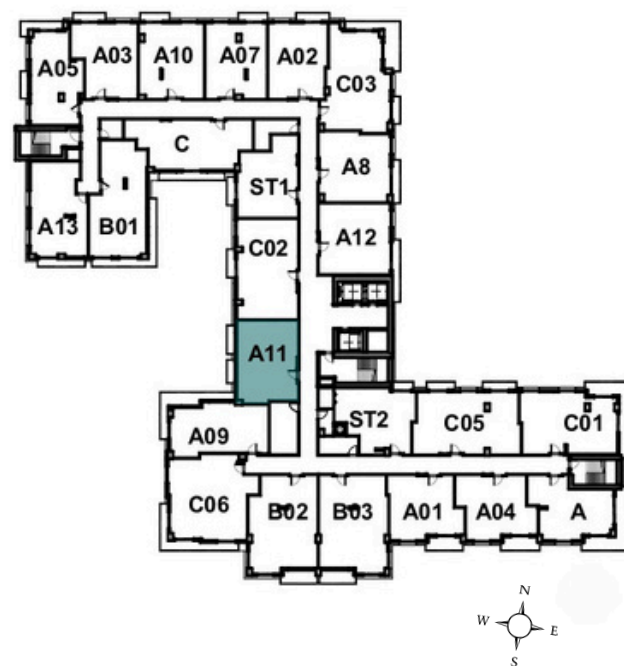
674 sf / 63 sq.m

Exterior

57 sf / 5 sq.m

Total

731 sf / 68 sq.m



Somi Walk (the "Condominium") is developed by ALTA SOMI I, LLC ("Developer") and you should only rely on the Developer's written representations. The illustrations and images are conceptual and may vary from concept to actual construction. The images are examples and do not reflect the design or decor of the completed Condominium. The floor plan, unit layout, locations of windows, floors closets, plumbing fixtures, mechanical equipment, appliances, structural elements, architectural design elements, views, and the uses configurations, and entries to rooms may change based on final approval plans, permitting, and completed construction. The furniture plan and the use of a space illustrated are suggested us only and not intended to guaranty or represent and specific use of space. Furnishings, design features, and decor illustrated and suggested uses only and not intended to guaranty or represent any specific use of space. Furnishings, design features, and decor illustrated are not included with purchase of a Unit. Certain amenities and features may require additional expense by Unit owner. There are water views, but the Condominium is not waterfront, and the views will vary depending on the Unit purchased. No view, water or otherwise, is guaranteed. Consult only the Developer's Prospectus for the Condominium to learn terms, conditions, specifications, estimated costs, Unit views, and to learn what is included with a Unit purchase and how to calculate the Unit size. The balconies depicted are conceptual and the size will vary based on final permitting and completed construction. Pursuant to the license agreement, Developer has the right to use the trade names, marks, images, and logos of Alta Development LLC for so long as the license agreement is not terminated or otherwise lapses.

Developer is not incorporated in, located in, nor a resident of, New York, or residents of any other jurisdiction were permitted by law.
Reproduction for any use is not authorized. 2024 ALTA SOMI I, LLC. Artist's renderings of development; excludes images of surrounding and neighboring buildings.





Junior Suite

Line 23

Floors 7-15

Interior

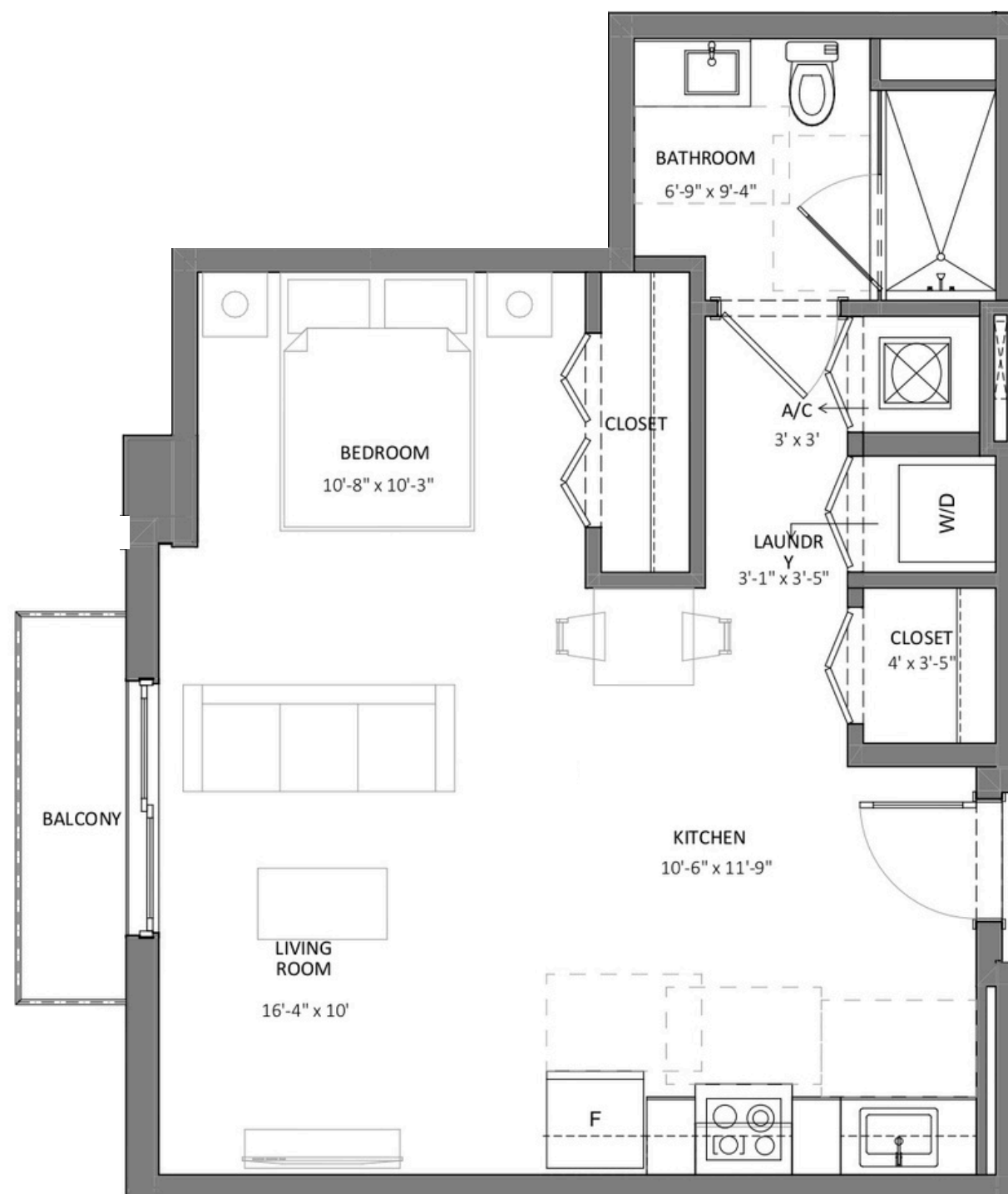
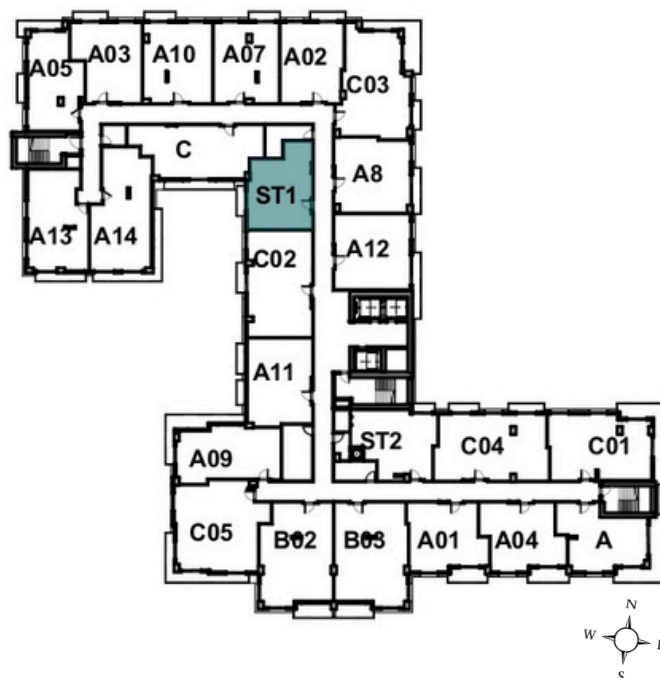
602 sf / 56 sq.m

Exterior

31 sf / 3 sq.m

Total

633 sf / 59 sq.m



Somi Walk (the "Condominium") is developed by ALTA SOMI I, LLC ("Developer") and you should only rely on the Developer's written representations. The illustrations and images are conceptual and may vary from concept to actual construction. The images are examples and do not reflect the design or decor of the completed Condominium. The floor plan, unit layout, locations of windows, floors closets, plumbing fixtures, mechanical equipment, appliances, structural elements, architectural design elements, views, and the uses configurations, and entries to rooms may change based on final approval plans, permitting, and completed construction. The furniture plan and the use of a space illustrated are suggested us only and not intended to guaranty or represent and specific use of space. Furnishings, design features, and decor illustrated and suggested uses only and not intended to guaranty or represent any specific use of space. Furnishings, design features, and decor illustrated are not included with purchase of a Unit. Certain amenities and features may require additional expense by Unit owner. There are water views, but the Condominium is not waterfront, and the views will vary depending on the Unit purchased. No view, water or otherwise, is guaranteed. Consult only the Developer's Prospectus for the Condominium to learn terms, conditions, specifications, estimated costs, Unit views, and to learn what is included with a Unit purchase and how to calculate the Unit size. The balconies depicted are conceptual and the size will vary based on final permitting and completed construction. Pursuant to the license agreement, Developer has the right to use the trade names, marks, images, and logos of Alta Development LLC for so long as the license agreement is not terminated or otherwise lapses.

Developer is not incorporated in, located in, nor a resident of, New York, or residents of any other jurisdiction were permitted by law.
Reproduction for any use is not authorized. 2024 ALTA SOMI I, LLC. Artist's renderings of development; excludes images of surrounding and neighboring buildings.

