

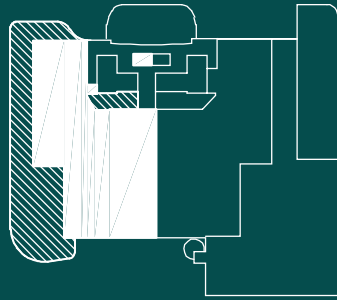


OCEAN<sup>580</sup>  
OPULENCE AWAITS



UNIT 202

BRINY AVE.



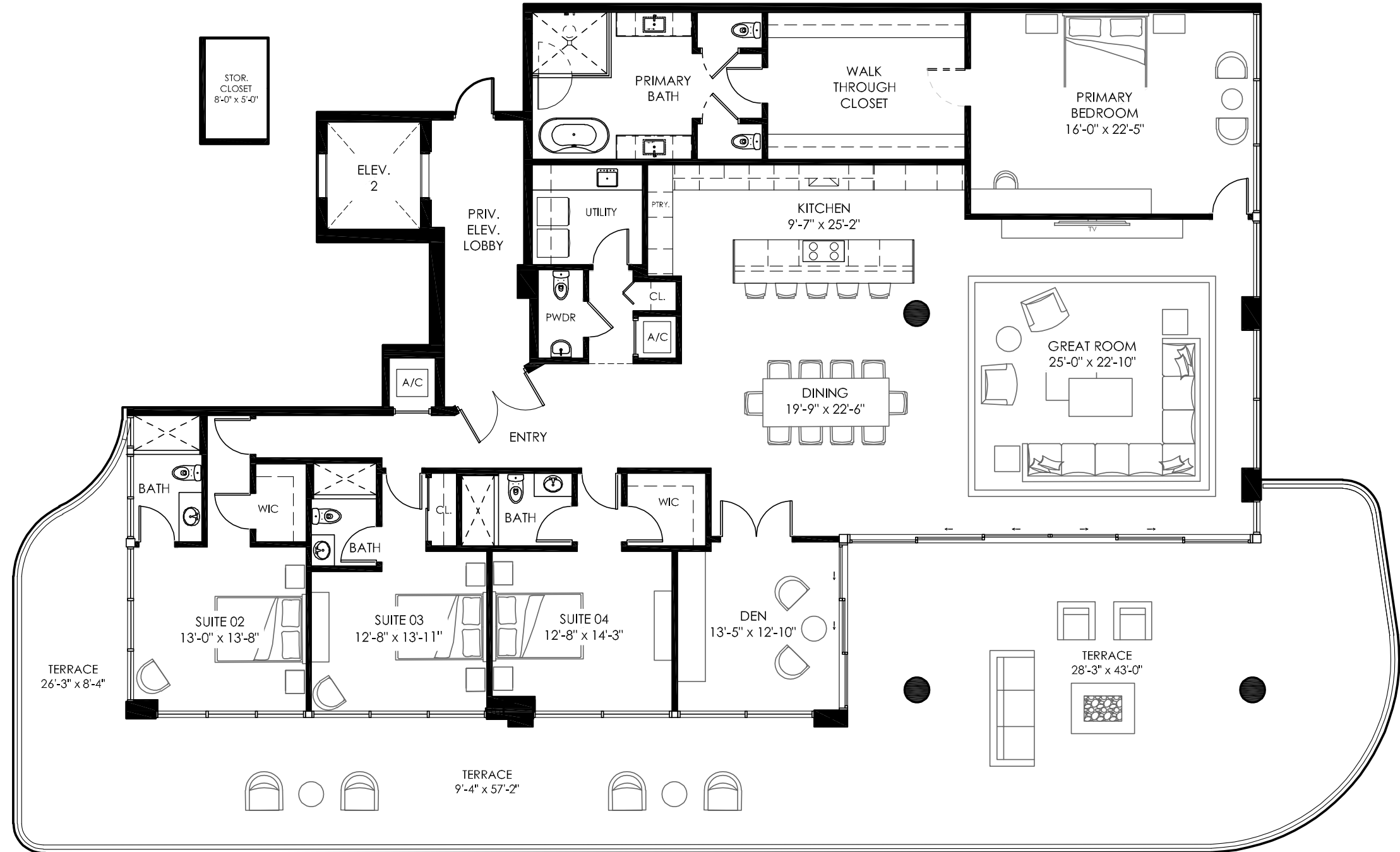
OCEAN

# UNIT 202

**4 Bedroom  
4 1/2 Bath  
Den**

3,831 SF interior  
1,925 SF terrace  
5,756 SF total area

580  
**OCEAN**  
OPULENCE AWAITS



# OCEAN<sup>580</sup>

OPULENCE AWAITS

**Ocean580 Residences**  
580 Briny Avenue  
Pompano Beach, Florida  
33062

DEVELOPER:  
SALES & MARKETING:



ORAL REPRESENTATIONS CANNOT BE RELIED UPON AS CORRECTLY STATING REPRESENTATIONS OF THE DEVELOPER. FOR CORRECT REPRESENTATIONS, MAKE REFERENCE TO THIS BROCHURE AND TO THE DOCUMENTS REQUIRED BY SECTION 718.503, FLORIDA STATUTES, TO BE FURNISHED BY A DEVELOPER TO A BUYER OR LESSEE.

SKETCHES AND ILLUSTRATIONS ARE ARTIST'S RENDERINGS. DETAILS AND FIELD VARIATIONS ARE SUBJECT TO CHANGE. ALL DIMENSIONS ARE APPROXIMATE, AND ALL FLOOR PLANS AND DEVELOPMENT PLANS ARE SUBJECT TO CHANGE.

THERE ARE VARIOUS METHODS FOR CALCULATING THE TOTAL SQUARE FOOTAGE OF A CONDOMINIUM UNIT, AND DEPENDING ON THE METHOD OF CALCULATION, THE QUOTED SQUARE FOOTAGE OF A CONDOMINIUM UNIT MAY VARY BY MORE THAN A NOMINAL AMOUNT. THE DIMENSIONS STATED IN THIS BROCHURE ARE MEASURED TO THE EXTERIOR BOUNDARIES OF THE EXTERIOR WALLS AND THE CENTERLINE OF INTERIOR DEMISING WALLS AND, IN FACT, ARE LARGER THAN THE DIMENSIONS OF THE "UNIT" AS DEFINED IN THE DECLARATION OF CONDOMINIUM FOR OCEAN 580 CONDOMINIUM, WHICH IS MEASURED USING INTERIOR MEASUREMENTS.





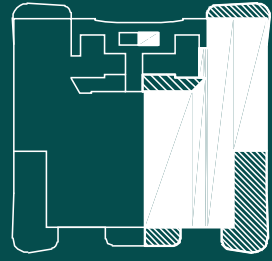
OCEAN<sup>580</sup>  
OPULENCE AWAITS



UNIT 301 TO 801



BRINY AVE.



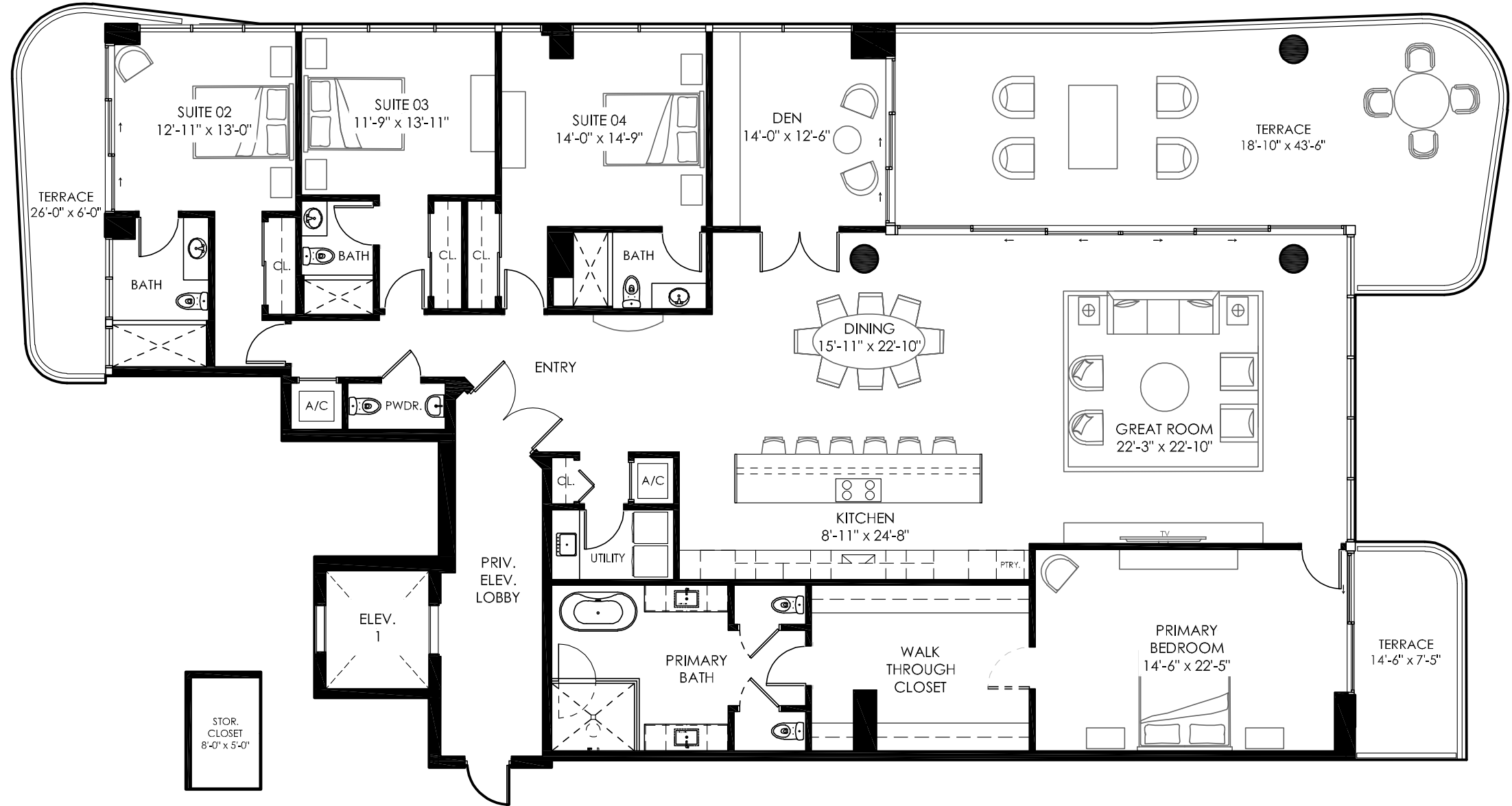
OCEAN

# UNIT 301 to 801

**4 Bedroom  
4 1/2 Bath  
Den**

3,688 SF interior  
966 SF terrace  
4,654 SF total area

**OCEAN**<sup>580</sup>  
OPULENCE AWAITS



# OCEAN<sup>580</sup>

OPULENCE AWAITS

**Ocean580 Residences**  
580 Briny Avenue  
Pompano Beach, Florida  
33062

DEVELOPER:  
SALES & MARKETING:



ORAL REPRESENTATIONS CANNOT BE RELIED UPON AS CORRECTLY STATING REPRESENTATIONS OF THE DEVELOPER. FOR CORRECT REPRESENTATIONS, MAKE REFERENCE TO THIS BROCHURE AND TO THE DOCUMENTS REQUIRED BY SECTION 718.503, FLORIDA STATUTES, TO BE FURNISHED BY A DEVELOPER TO A BUYER OR LESSEE.

SKETCHES AND ILLUSTRATIONS ARE ARTIST'S RENDERINGS. DETAILS AND FIELD VARIATIONS ARE SUBJECT TO CHANGE. ALL DIMENSIONS ARE APPROXIMATE, AND ALL FLOOR PLANS AND DEVELOPMENT PLANS ARE SUBJECT TO CHANGE.

THERE ARE VARIOUS METHODS FOR CALCULATING THE TOTAL SQUARE FOOTAGE OF A CONDOMINIUM UNIT, AND DEPENDING ON THE METHOD OF CALCULATION, THE QUOTED SQUARE FOOTAGE OF A CONDOMINIUM UNIT MAY VARY BY MORE THAN A NOMINAL AMOUNT. THE DIMENSIONS STATED IN THIS BROCHURE ARE MEASURED TO THE EXTERIOR BOUNDARIES OF THE EXTERIOR WALLS AND THE CENTERLINE OF INTERIOR DEMISING WALLS AND, IN FACT, ARE LARGER THAN THE DIMENSIONS OF THE "UNIT" AS DEFINED IN THE DECLARATION OF CONDOMINIUM FOR OCEAN 580 CONDOMINIUM, WHICH IS MEASURED USING INTERIOR MEASUREMENTS.





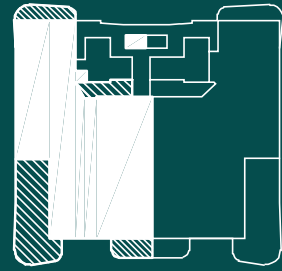
OCEAN<sup>580</sup>  
OPULENCE AWAITS



UNIT 302 TO 802



BRINY AVE.



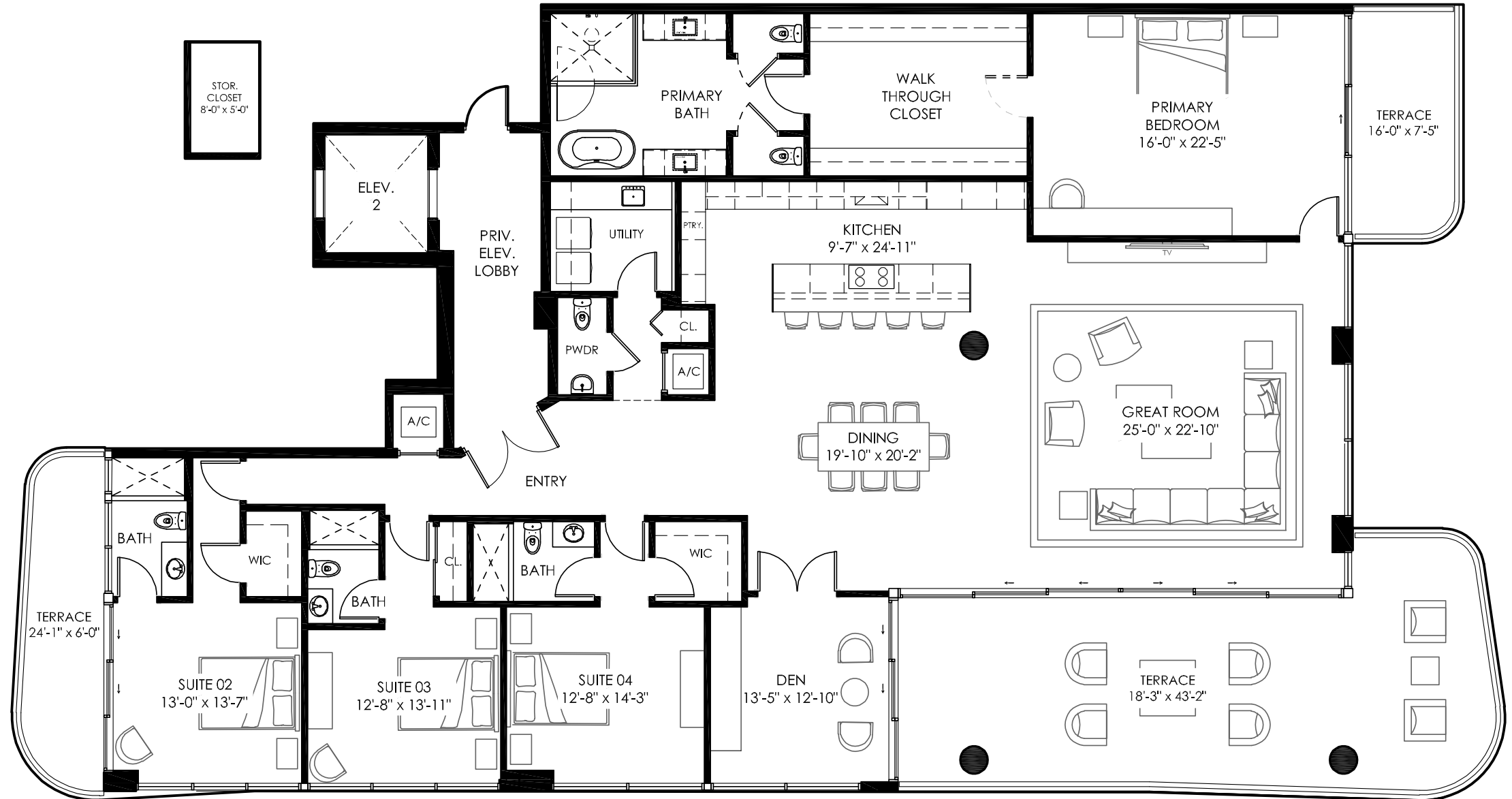
OCEAN

# UNIT 302 to 802

**4 Bedroom  
4 1/2 Bath  
Den**

3,831 SF interior  
934 SF terrace  
4,765 SF total area

**OCEAN**<sup>580</sup>  
OPULENCE AWAITS



# OCEAN<sup>580</sup>

OPULENCE AWAITS

**Ocean580 Residences**  
580 Briny Avenue  
Pompano Beach, Florida  
33062

DEVELOPER:  
SALES & MARKETING:



ORAL REPRESENTATIONS CANNOT BE RELIED UPON AS CORRECTLY STATING REPRESENTATIONS OF THE DEVELOPER. FOR CORRECT REPRESENTATIONS, MAKE REFERENCE TO THIS BROCHURE AND TO THE DOCUMENTS REQUIRED BY SECTION 718.503, FLORIDA STATUTES, TO BE FURNISHED BY A DEVELOPER TO A BUYER OR LESSEE.

SKETCHES AND ILLUSTRATIONS ARE ARTIST'S RENDERINGS. DETAILS AND FIELD VARIATIONS ARE SUBJECT TO CHANGE. ALL DIMENSIONS ARE APPROXIMATE, AND ALL FLOOR PLANS AND DEVELOPMENT PLANS ARE SUBJECT TO CHANGE.

THERE ARE VARIOUS METHODS FOR CALCULATING THE TOTAL SQUARE FOOTAGE OF A CONDOMINIUM UNIT, AND DEPENDING ON THE METHOD OF CALCULATION, THE QUOTED SQUARE FOOTAGE OF A CONDOMINIUM UNIT MAY VARY BY MORE THAN A NOMINAL AMOUNT. THE DIMENSIONS STATED IN THIS BROCHURE ARE MEASURED TO THE EXTERIOR BOUNDARIES OF THE EXTERIOR WALLS AND THE CENTERLINE OF INTERIOR DEMISING WALLS AND, IN FACT, ARE LARGER THAN THE DIMENSIONS OF THE "UNIT" AS DEFINED IN THE DECLARATION OF CONDOMINIUM FOR OCEAN 580 CONDOMINIUM, WHICH IS MEASURED USING INTERIOR MEASUREMENTS.



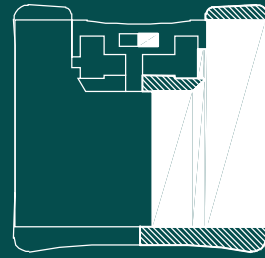


OCEAN<sup>580</sup>  
OPULENCE AWAITS



UNIT 901

BRINY AVE.

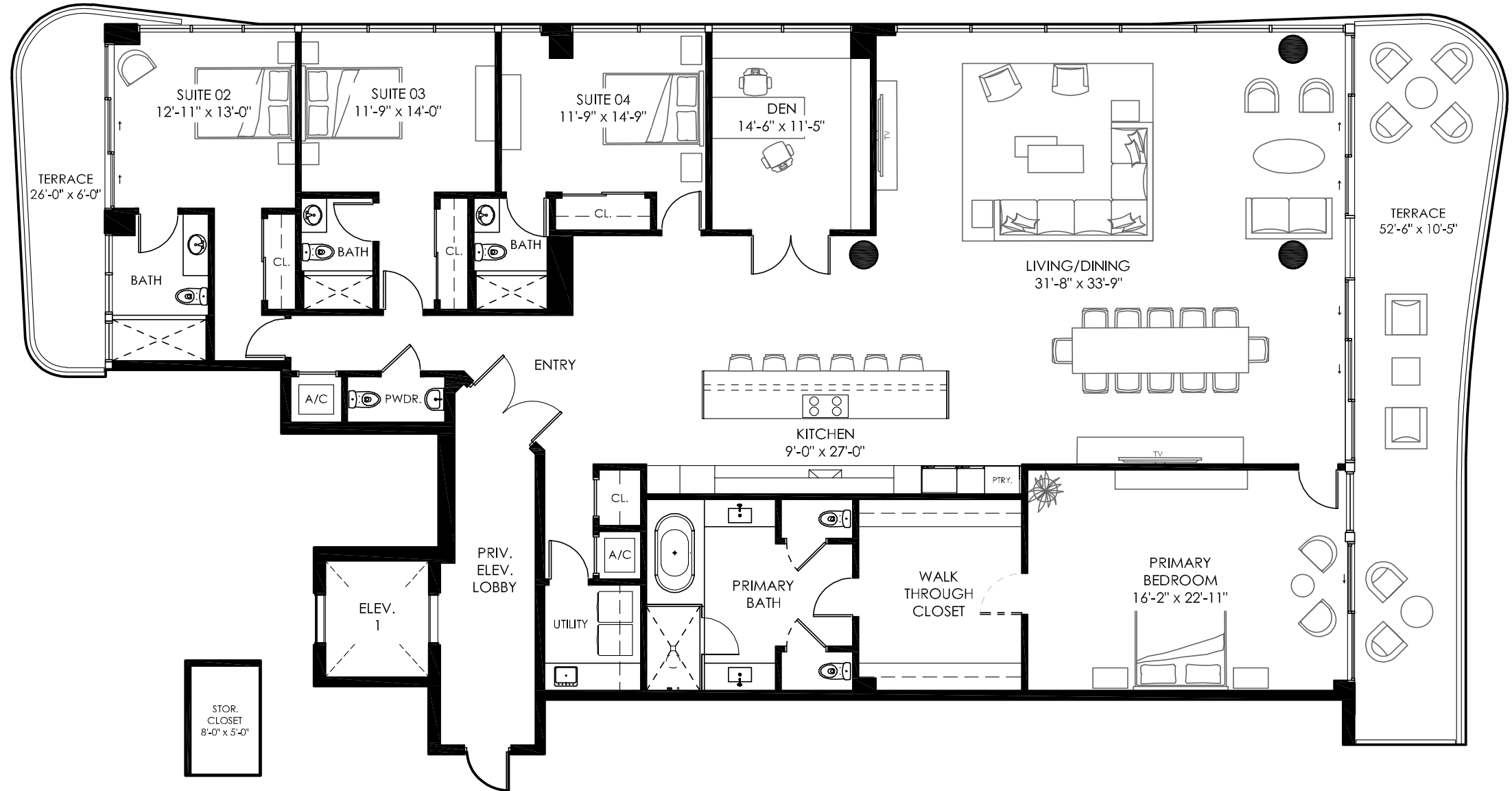


OCEAN

# UNIT 901

**4 Bedroom  
4 1/2 Bath  
Den**

3,965 SF interior  
632 SF terrace  
4,597 SF total area



**OCEAN**<sup>580</sup>  
OPULENCE AWAITS

# OCEAN<sup>580</sup>

OPULENCE AWAITS

**Ocean580 Residences**  
580 Briny Avenue  
Pompano Beach, Florida  
33062

DEVELOPER:  
SALES & MARKETING:



ORAL REPRESENTATIONS CANNOT BE RELIED UPON AS CORRECTLY STATING REPRESENTATIONS OF THE DEVELOPER. FOR CORRECT REPRESENTATIONS, MAKE REFERENCE TO THIS BROCHURE AND TO THE DOCUMENTS REQUIRED BY SECTION 718.503, FLORIDA STATUTES, TO BE FURNISHED BY A DEVELOPER TO A BUYER OR LESSEE.

SKETCHES AND ILLUSTRATIONS ARE ARTIST'S RENDERINGS. DETAILS AND FIELD VARIATIONS ARE SUBJECT TO CHANGE. ALL DIMENSIONS ARE APPROXIMATE, AND ALL FLOOR PLANS AND DEVELOPMENT PLANS ARE SUBJECT TO CHANGE.

THERE ARE VARIOUS METHODS FOR CALCULATING THE TOTAL SQUARE FOOTAGE OF A CONDOMINIUM UNIT, AND DEPENDING ON THE METHOD OF CALCULATION, THE QUOTED SQUARE FOOTAGE OF A CONDOMINIUM UNIT MAY VARY BY MORE THAN A NOMINAL AMOUNT. THE DIMENSIONS STATED IN THIS BROCHURE ARE MEASURED TO THE EXTERIOR BOUNDARIES OF THE EXTERIOR WALLS AND THE CENTERLINE OF INTERIOR DEMISING WALLS AND, IN FACT, ARE LARGER THAN THE DIMENSIONS OF THE "UNIT" AS DEFINED IN THE DECLARATION OF CONDOMINIUM FOR OCEAN 580 CONDOMINIUM, WHICH IS MEASURED USING INTERIOR MEASUREMENTS.



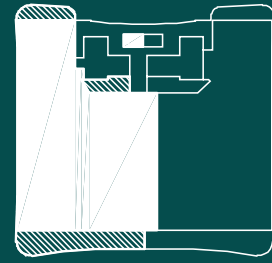


OCEAN<sup>580</sup>  
OPULENCE AWAITS



UNIT 902

BRINY AVE.



OCEAN

# UNIT 902

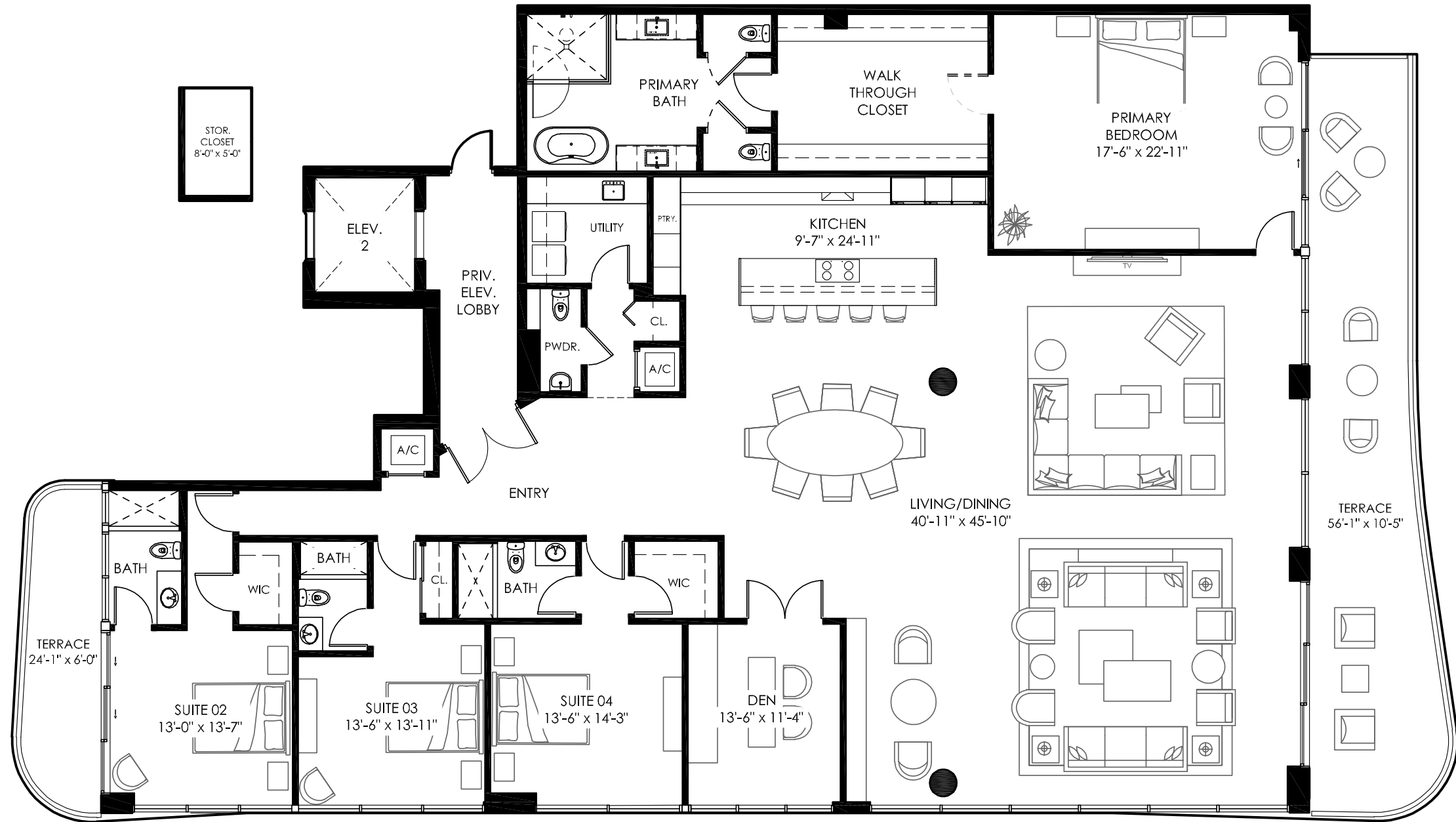
**4 Bedroom  
4 1/2 Bath  
Den**

4,493 SF interior

647 SF terrace

5,140 SF total area

580  
**OCEAN**  
OPULENCE AWAITS



# OCEAN<sup>580</sup>

OPULENCE AWAITS

**Ocean580 Residences**  
580 Briny Avenue  
Pompano Beach, Florida  
33062

DEVELOPER:  
SALES & MARKETING:



ORAL REPRESENTATIONS CANNOT BE RELIED UPON AS CORRECTLY STATING REPRESENTATIONS OF THE DEVELOPER. FOR CORRECT REPRESENTATIONS, MAKE REFERENCE TO THIS BROCHURE AND TO THE DOCUMENTS REQUIRED BY SECTION 718.503, FLORIDA STATUTES, TO BE FURNISHED BY A DEVELOPER TO A BUYER OR LESSEE.

SKETCHES AND ILLUSTRATIONS ARE ARTIST'S RENDERINGS. DETAILS AND FIELD VARIATIONS ARE SUBJECT TO CHANGE. ALL DIMENSIONS ARE APPROXIMATE, AND ALL FLOOR PLANS AND DEVELOPMENT PLANS ARE SUBJECT TO CHANGE.

THERE ARE VARIOUS METHODS FOR CALCULATING THE TOTAL SQUARE FOOTAGE OF A CONDOMINIUM UNIT, AND DEPENDING ON THE METHOD OF CALCULATION, THE QUOTED SQUARE FOOTAGE OF A CONDOMINIUM UNIT MAY VARY BY MORE THAN A NOMINAL AMOUNT. THE DIMENSIONS STATED IN THIS BROCHURE ARE MEASURED TO THE EXTERIOR BOUNDARIES OF THE EXTERIOR WALLS AND THE CENTERLINE OF INTERIOR DEMISING WALLS AND, IN FACT, ARE LARGER THAN THE DIMENSIONS OF THE "UNIT" AS DEFINED IN THE DECLARATION OF CONDOMINIUM FOR OCEAN 580 CONDOMINIUM, WHICH IS MEASURED USING INTERIOR MEASUREMENTS.

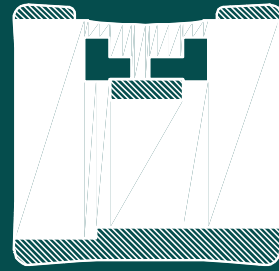


OCEAN<sup>580</sup>  
OPULENCE AWAITS



PENTHOUSE 1001

BRINY AVE.



OCEAN

# PENTHOUSE 1001

**5 Bedroom  
6 1/2 Bath  
Office**

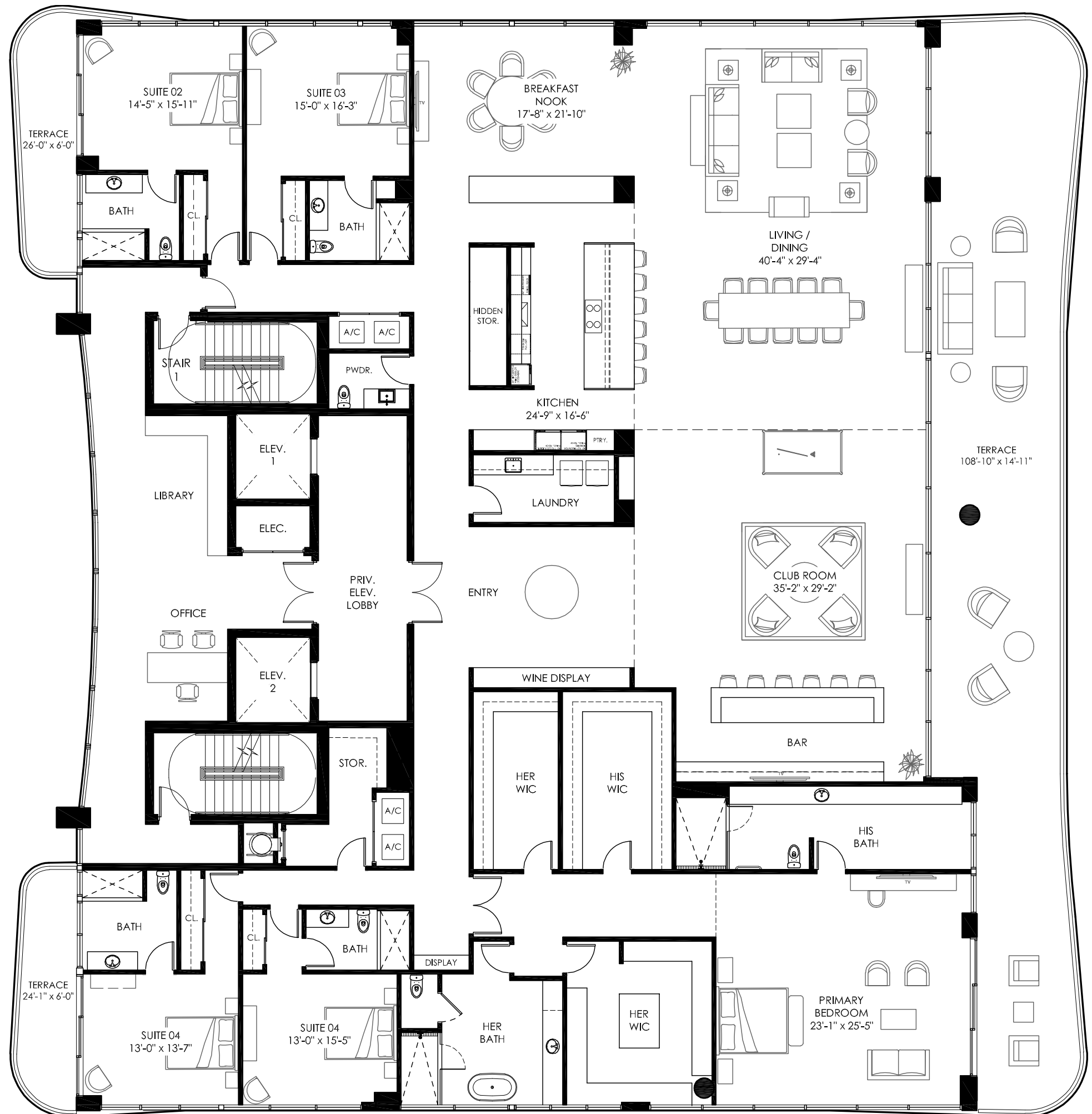
8,872 SF interior

1,707 SF terrace

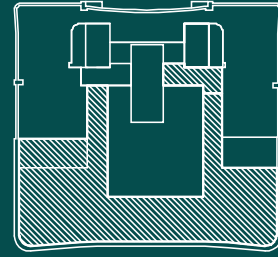
3,325 SF roof terrace  
across the entire building  
on the east side

13,904 SF total area

580  
**OCEAN**  
OPULENCE AWAITS



BRINY AVE.

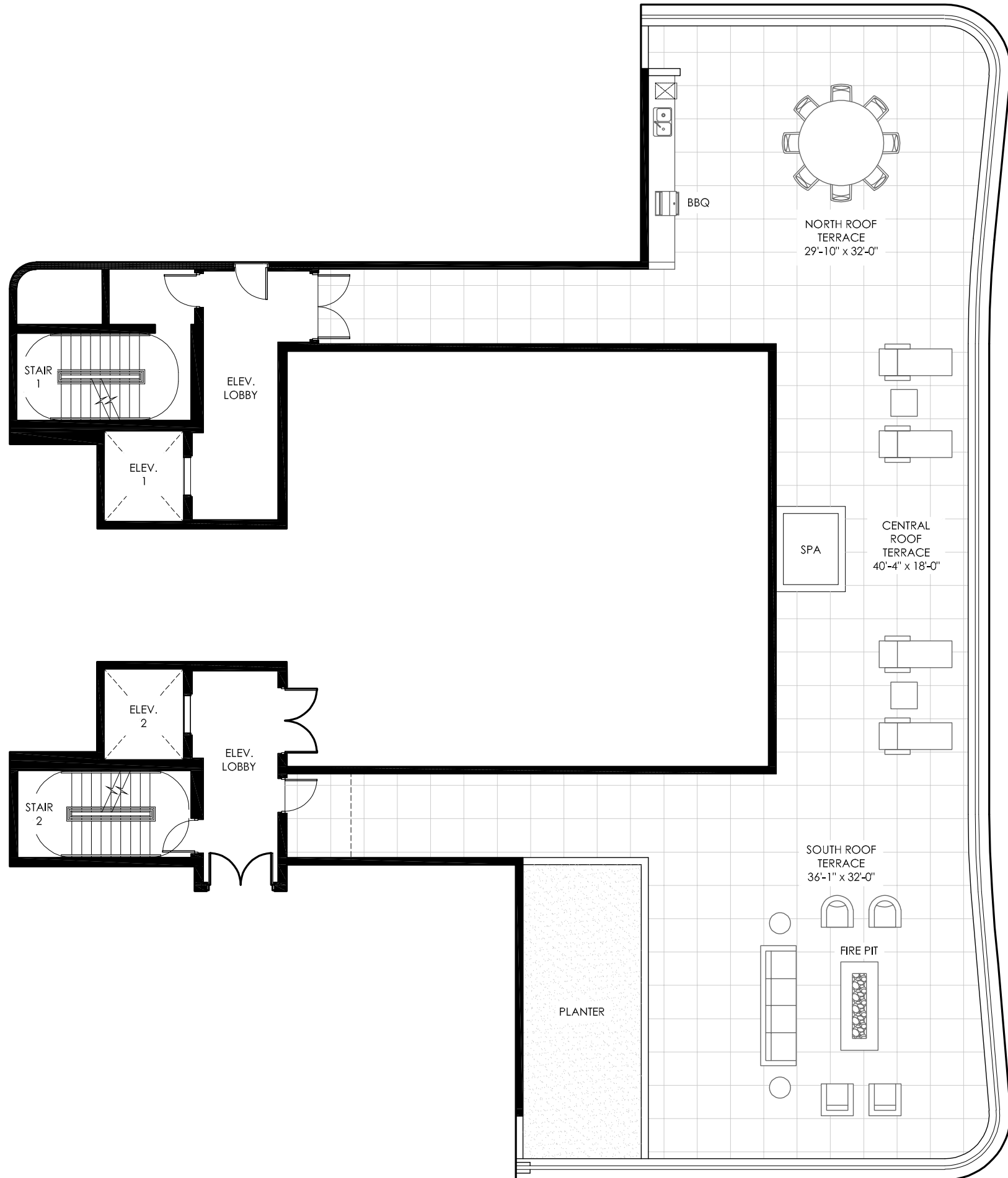


OCEAN

# PENTHOUSE ROOF TERRACE

3,325 SF area  
East Roof Terrace  
Penthouse Only

**OCEAN**<sup>580</sup>  
OPULENCE AWAITS



# OCEAN<sup>580</sup>

OPULENCE AWAITS

**Ocean580 Sales Gallery**  
101 S Ocean Blvd.  
Pompano Beach, Florida 33062

**Ocean580 Residences**  
580 Briny Avenue  
Pompano Beach, Florida 33062

**Ocean580.com**  
**954.459.4180**

DEVELOPER:  
SALES & MARKETING:



ORAL REPRESENTATIONS CANNOT BE RELIED UPON AS CORRECTLY STATING REPRESENTATIONS OF THE DEVELOPER. FOR CORRECT REPRESENTATIONS, MAKE REFERENCE TO THIS BROCHURE AND TO THE DOCUMENTS REQUIRED BY SECTION 718.503, FLORIDA STATUTES, TO BE FURNISHED BY A DEVELOPER TO A BUYER OR LESSEE.

SKETCHES AND ILLUSTRATIONS ARE ARTIST'S RENDERINGS. DETAILS AND FIELD VARIATIONS ARE SUBJECT TO CHANGE. ALL DIMENSIONS ARE APPROXIMATE, AND ALL FLOOR PLANS AND DEVELOPMENT PLANS ARE SUBJECT TO CHANGE.

THERE ARE VARIOUS METHODS FOR CALCULATING THE TOTAL SQUARE FOOTAGE OF A CONDOMINIUM UNIT, AND DEPENDING ON THE METHOD OF CALCULATION, THE QUOTED SQUARE FOOTAGE OF A CONDOMINIUM UNIT MAY VARY BY MORE THAN A NOMINAL AMOUNT. THE DIMENSIONS STATED IN THIS BROCHURE ARE MEASURED TO THE EXTERIOR BOUNDARIES OF THE EXTERIOR WALLS AND THE CENTERLINE OF INTERIOR DEMISING WALLS AND, IN FACT, ARE LARGER THAN THE DIMENSIONS OF THE "UNIT" AS DEFINED IN THE DECLARATION OF CONDOMINIUM FOR OCEAN 580 CONDOMINIUM, WHICH IS MEASURED USING INTERIOR MEASUREMENTS.

