



# BUNGALOW

EAST

FT LAUDERDALE BEACH



RESIDENCE *FLOORPLATE*



# RESIDENCE FLOORPLATE



## RESIDENCE 01

4 Bedrooms & 4 Bathrooms

Interior 2,829 SF | 263 M<sup>2</sup>

Exterior 691 SF | 64 M<sup>2</sup>

Total 3,526 SF | 327 M<sup>2</sup>

## RESIDENCE 02

3 Bedrooms & 3 Bathrooms

Interior 2,105 SF | 196 M<sup>2</sup>

Exterior 652 SF | 61 M<sup>2</sup>

Total 2,757 SF | 256 M<sup>2</sup>

## RESIDENCE 04

4 Bedrooms & 4 Bathrooms

Interior 2,818 SF | 262 M<sup>2</sup>

Exterior 721 SF | 67 M<sup>2</sup>

Total 3,539 SF | 329 M<sup>2</sup>

## RESIDENCE 03

3 Bedrooms & 3 Bathrooms

Interior 2,110 SF | 196 M<sup>2</sup>

Exterior 662 SF | 61 M<sup>2</sup>

Total 2,772 SF | 258 M<sup>2</sup>



THE DIMENSIONS STATED FOR THIS FLOOR PLAN ARE APPROXIMATE BECAUSE THERE ARE VARIOUS RECOGNIZED METHODS FOR CALCULATING THE SQUARE FOOTAGE OF A UNIT. THE SQUARE FOOTAGE STATED HERE IS CALCULATED FROM THE EXTERIOR BOUNDARIES OF THE EXTERIOR WALLS TO THE CENTERLINE OF INTERIOR DEMISING WALLS WITHOUT DEDUCTIONS FOR CUTOUTS, CURVES, OR ARCHITECTURAL FEATURES. THIS METHOD TYPICALLY RESULTS IN QUOTED DIMENSIONS GREATER THAN THE DIMENSIONS THAT WOULD BE DETERMINED BY USING OTHER ACCEPTED METHODS. THE DEFINITION OF "UNIT" AND THE CALCULATION METHOD TO BE RELIED UPON IS SET FORTH BY THE DEVELOPER IN DEVELOPER'S PROSPECTUS WHICH METHOD MAY RESULT IN A SQUARE FOOTAGE CALCULATION LESS THAN THE RESULT OF THE CALCULATION METHOD USED HERE. CONSULT THE DEVELOPER'S PROSPECTUS TO LEARN WHAT IS INCLUDED WITH UNIT PURCHASE AND TO UNDERSTAND UNIT DIMENSIONS.



# BUNGALOW

EAST

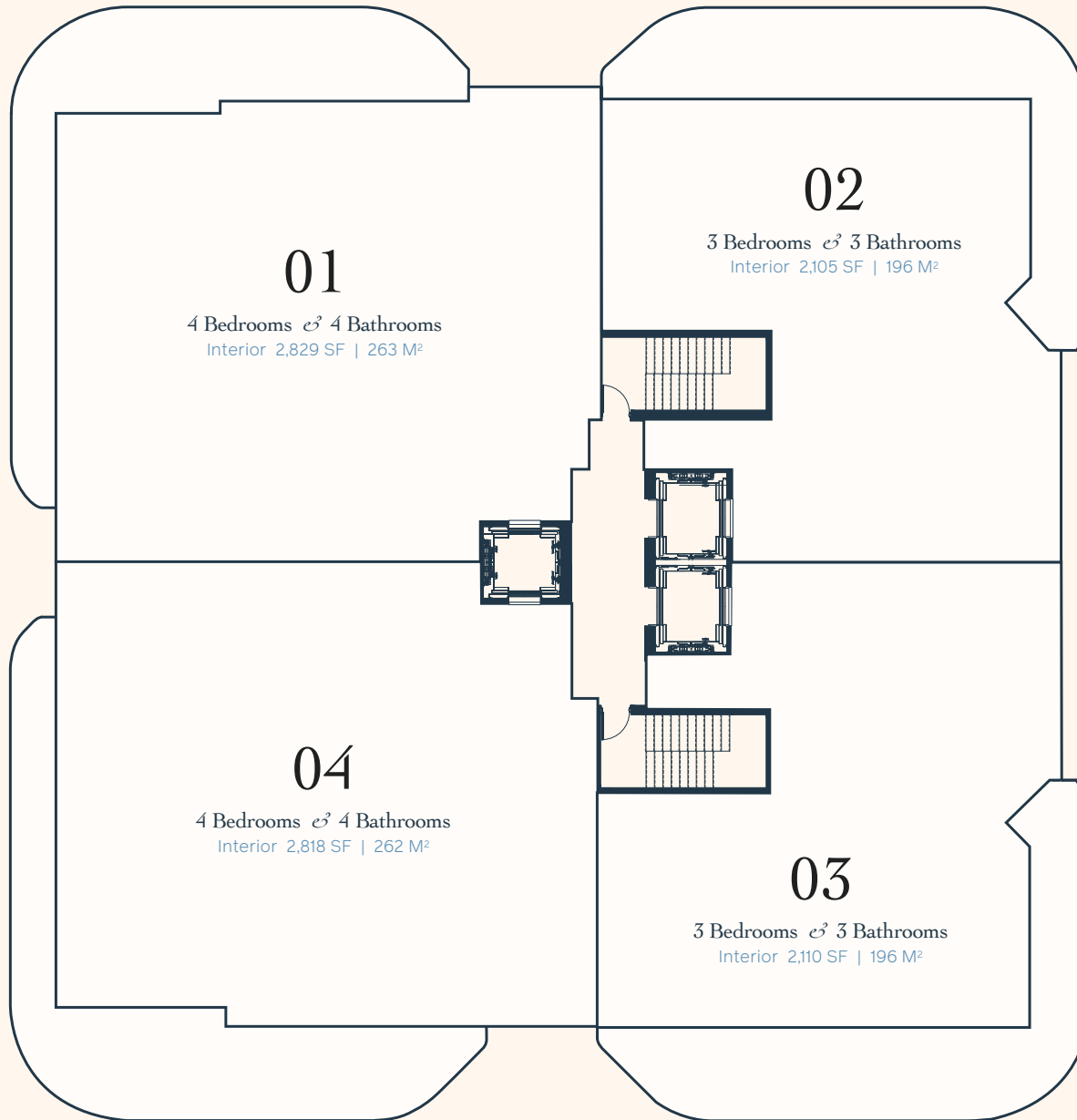
FT LAUDERDALE BEACH



## RESIDENCE *FLOORPLATE*



# RESIDENCE FLOORPLATE



THE DIMENSIONS STATED FOR THIS FLOOR PLAN ARE APPROXIMATE BECAUSE THERE ARE VARIOUS RECOGNIZED METHODS FOR CALCULATING THE SQUARE FOOTAGE OF A UNIT. THE SQUARE FOOTAGE STATED HERE IS CALCULATED FROM THE EXTERIOR BOUNDARIES OF THE EXTERIOR WALLS TO THE CENTERLINE OF INTERIOR DEMISING WALLS WITHOUT DEDUCTIONS FOR CUTOUTS, CURVES, OR ARCHITECTURAL FEATURES. THIS METHOD TYPICALLY RESULTS IN QUOTED DIMENSIONS GREATER THAN THE DIMENSIONS THAT WOULD BE DETERMINED BY USING OTHER ACCEPTED METHODS. THE DEFINITION OF "UNIT" AND THE CALCULATION METHOD TO BE RELIED UPON IS SET FORTH BY THE DEVELOPER IN DEVELOPER'S PROSPECTUS WHICH METHOD MAY RESULT IN A SQUARE FOOTAGE CALCULATION LESS THAN THE RESULT OF THE CALCULATION METHOD USED HERE. CONSULT THE DEVELOPER'S PROSPECTUS TO LEARN WHAT IS INCLUDED WITH UNIT PURCHASE AND TO UNDERSTAND UNIT DIMENSIONS.



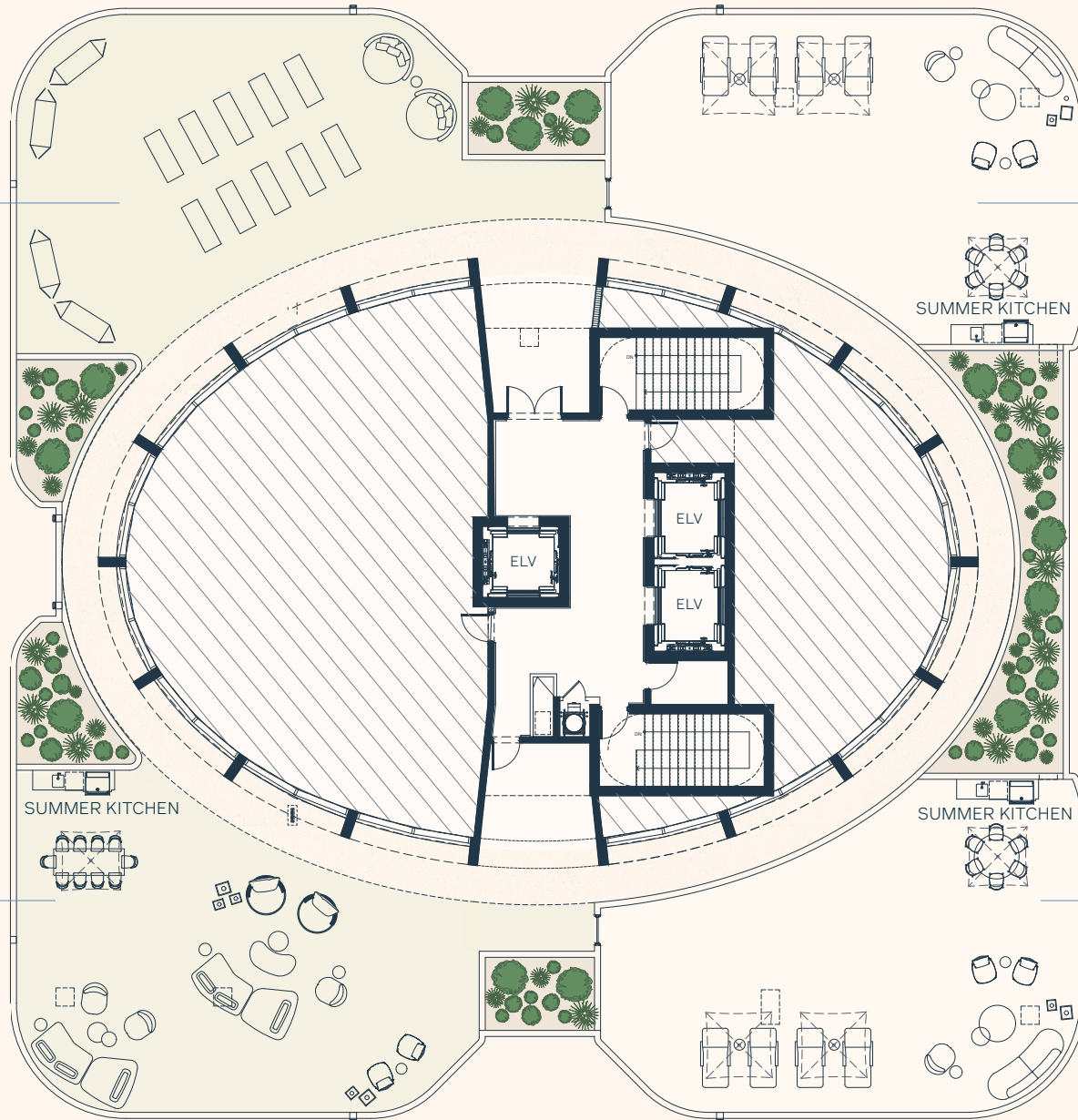
# ROOFTOP FLOORPLATE



SUN TERRACE

PENTHOUSE A  
PRIVATE TERRACE

1,509 SF | 140 M<sup>2</sup>



SUNSET TERRACE  
WITH SUMMER KITCHEN

PENTHOUSE B  
PRIVATE TERRACE

1,538 SF | 143 M<sup>2</sup>



THE DIMENSIONS STATED FOR THIS FLOOR PLAN ARE APPROXIMATE BECAUSE THERE ARE VARIOUS RECOGNIZED METHODS FOR CALCULATING THE SQUARE FOOTAGE OF A UNIT. THE SQUARE FOOTAGE STATED HERE IS CALCULATED FROM THE EXTERIOR BOUNDARIES OF THE EXTERIOR WALLS TO THE CENTERLINE OF INTERIOR DEMISING WALLS WITHOUT DEDUCTIONS FOR CUTOUTS, CURVES, OR ARCHITECTURAL FEATURES. THIS METHOD TYPICALLY RESULTS IN QUOTED DIMENSIONS GREATER THAN THE DIMENSIONS THAT WOULD BE DETERMINED BY USING OTHER ACCEPTED METHODS. THE DEFINITION OF "UNIT" AND THE CALCULATION METHOD TO BE RELIED UPON IS SET FORTH BY THE DEVELOPER IN DEVELOPER'S PROSPECTUS WHICH METHOD MAY RESULT IN A SQUARE FOOTAGE CALCULATION LESS THAN THE RESULT OF THE CALCULATION METHOD USED HERE. CONSULT THE DEVELOPER'S PROSPECTUS TO LEARN WHAT IS INCLUDED WITH UNIT PURCHASE AND TO UNDERSTAND UNIT DIMENSIONS.



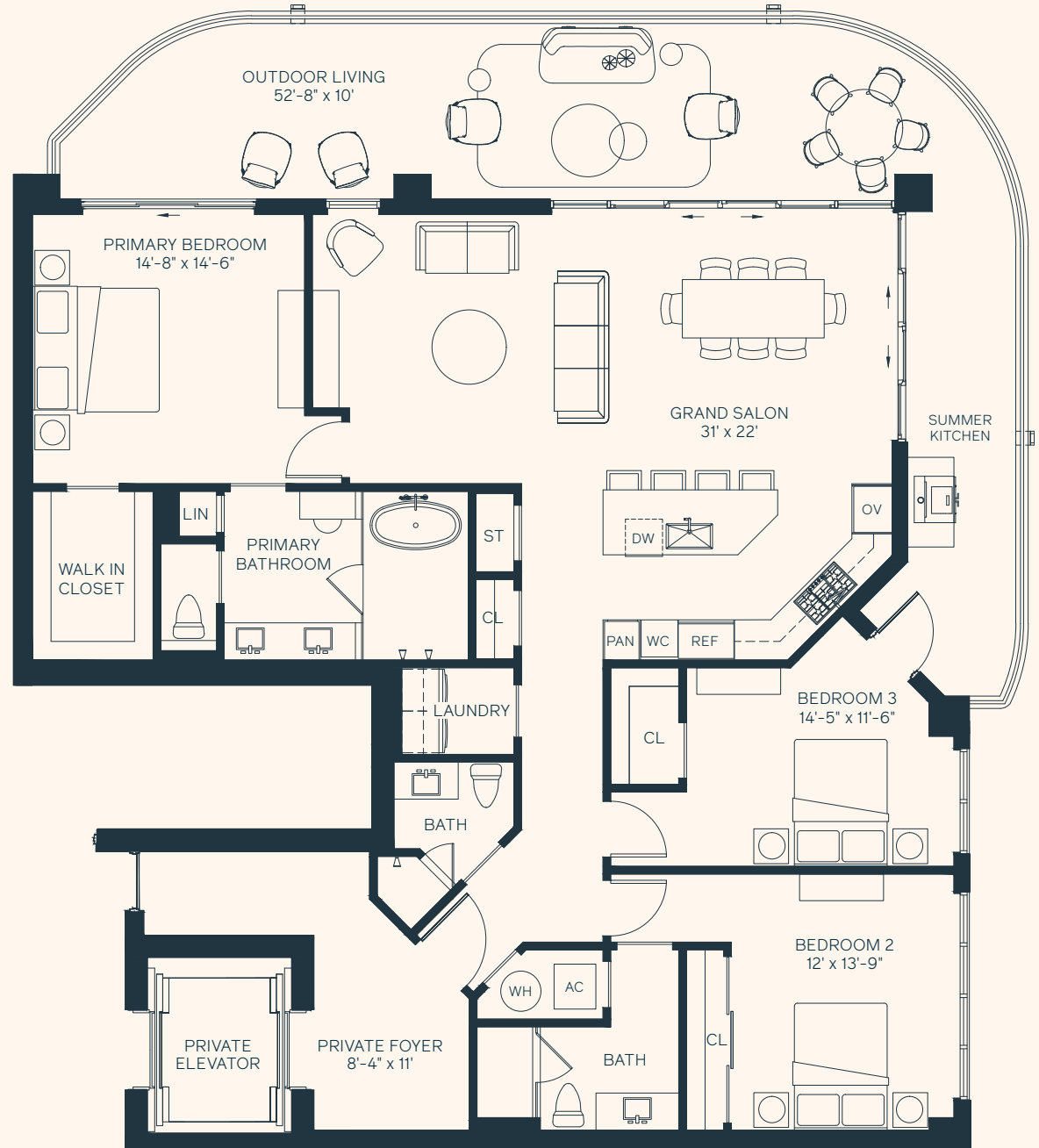
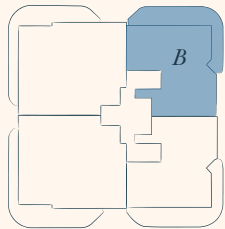
# RESIDENCE B

3 Bedrooms & 3 Bathrooms

Interior 2,105 SF | 196 M<sup>2</sup>

Exterior 652 SF | 61 M<sup>2</sup>

Total 2,757 SF | 256 M<sup>2</sup>



ⓘ THE DIMENSIONS STATED FOR THIS FLOOR PLAN ARE APPROXIMATE BECAUSE THERE ARE VARIOUS RECOGNIZED METHODS FOR CALCULATING THE SQUARE FOOTAGE OF A UNIT. THE SQUARE FOOTAGE STATED HERE IS CALCULATED FROM THE EXTERIOR BOUNDARIES OF THE EXTERIOR WALLS TO THE CENTERLINE OF INTERIOR DEMISING WALLS WITHOUT DEDUCTIONS FOR CUTOUTS, CURVES, OR ARCHITECTURAL FEATURES. THIS METHOD TYPICALLY RESULTS IN QUOTED DIMENSIONS GREATER THAN THE DIMENSIONS THAT WOULD BE DETERMINED BY USING OTHER ACCEPTED METHODS. THE DEFINITION OF "UNIT" AND THE CALCULATION METHOD TO BE RELIED UPON IS SET FORTH BY THE DEVELOPER IN DEVELOPER'S PROSPECTUS WHICH METHOD MAY RESULT IN A SQUARE FOOTAGE CALCULATION LESS THAN THE RESULT OF THE CALCULATION METHOD USED HERE. CONSULT THE DEVELOPER'S PROSPECTUS TO LEARN WHAT IS INCLUDED WITH UNIT PURCHASE AND TO UNDERSTAND UNIT DIMENSIONS.



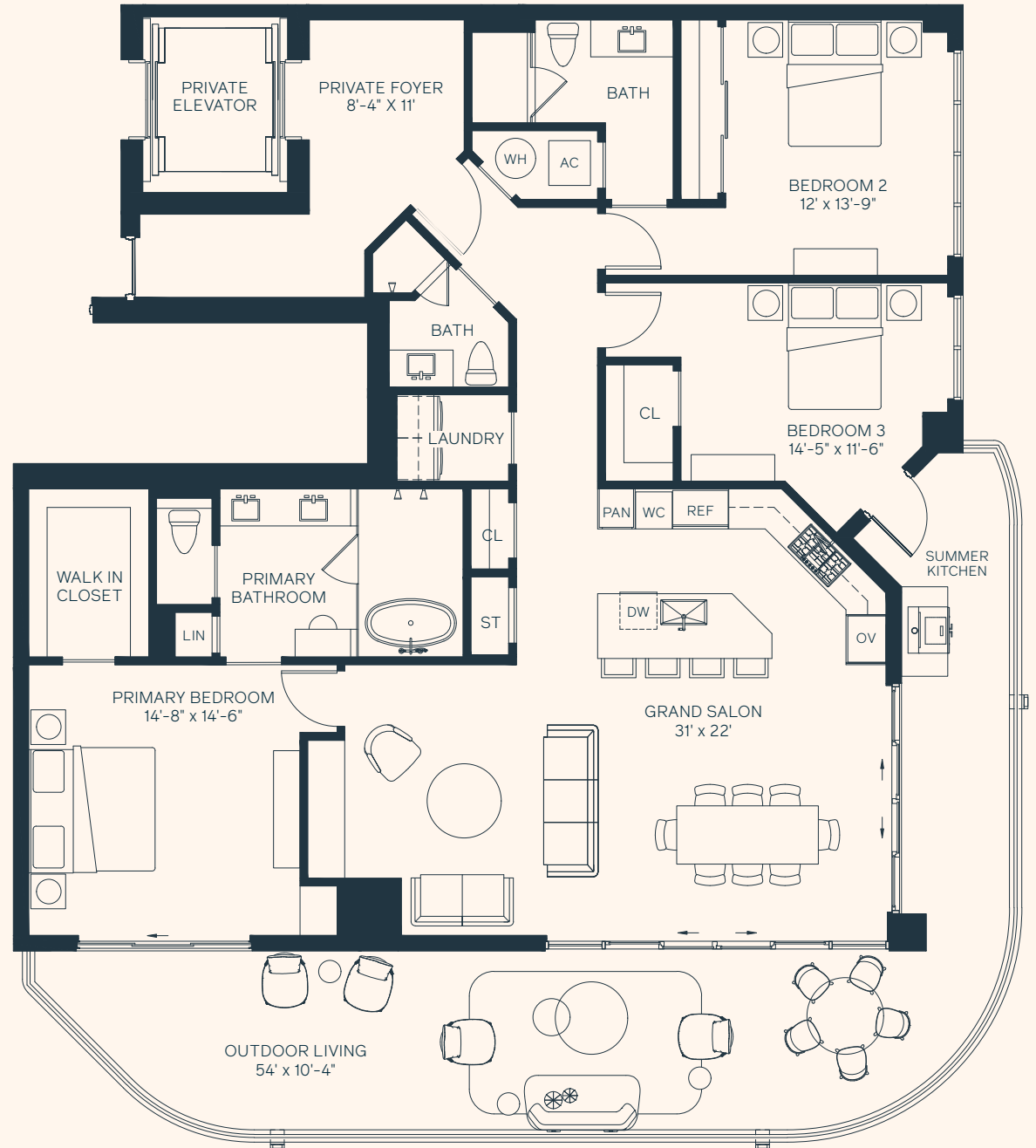
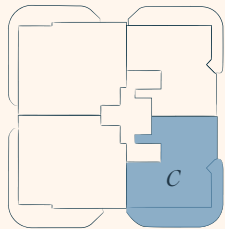
# RESIDENCE C

3 Bedrooms & 3 Bathrooms

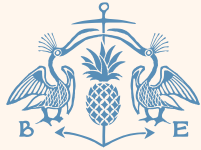
Interior 2,110 SF | 196 M<sup>2</sup>

Exterior 662 SF | 61 M<sup>2</sup>

Total 2,772 SF | 258 M<sup>2</sup>



ⓘ THE DIMENSIONS STATED FOR THIS FLOOR PLAN ARE APPROXIMATE BECAUSE THERE ARE VARIOUS RECOGNIZED METHODS FOR CALCULATING THE SQUARE FOOTAGE OF A UNIT. THE SQUARE FOOTAGE STATED HERE IS CALCULATED FROM THE EXTERIOR BOUNDARIES OF THE EXTERIOR WALLS TO THE CENTERLINE OF INTERIOR DEMISING WALLS WITHOUT DEDUCTIONS FOR CUTOUPS, CURVES, OR ARCHITECTURAL FEATURES. THIS METHOD TYPICALLY RESULTS IN QUOTED DIMENSIONS GREATER THAN THE DIMENSIONS THAT WOULD BE DETERMINED BY USING OTHER ACCEPTED METHODS. THE DEFINITION OF "UNIT" AND THE CALCULATION METHOD TO BE RELIED UPON IS SET FORTH BY THE DEVELOPER IN DEVELOPER'S PROSPECTUS WHICH METHOD MAY RESULT IN A SQUARE FOOTAGE CALCULATION LESS THAN THE RESULT OF THE CALCULATION METHOD USED HERE. CONSULT THE DEVELOPER'S PROSPECTUS TO LEARN WHAT IS INCLUDED WITH UNIT PURCHASE AND TO UNDERSTAND UNIT DIMENSIONS.



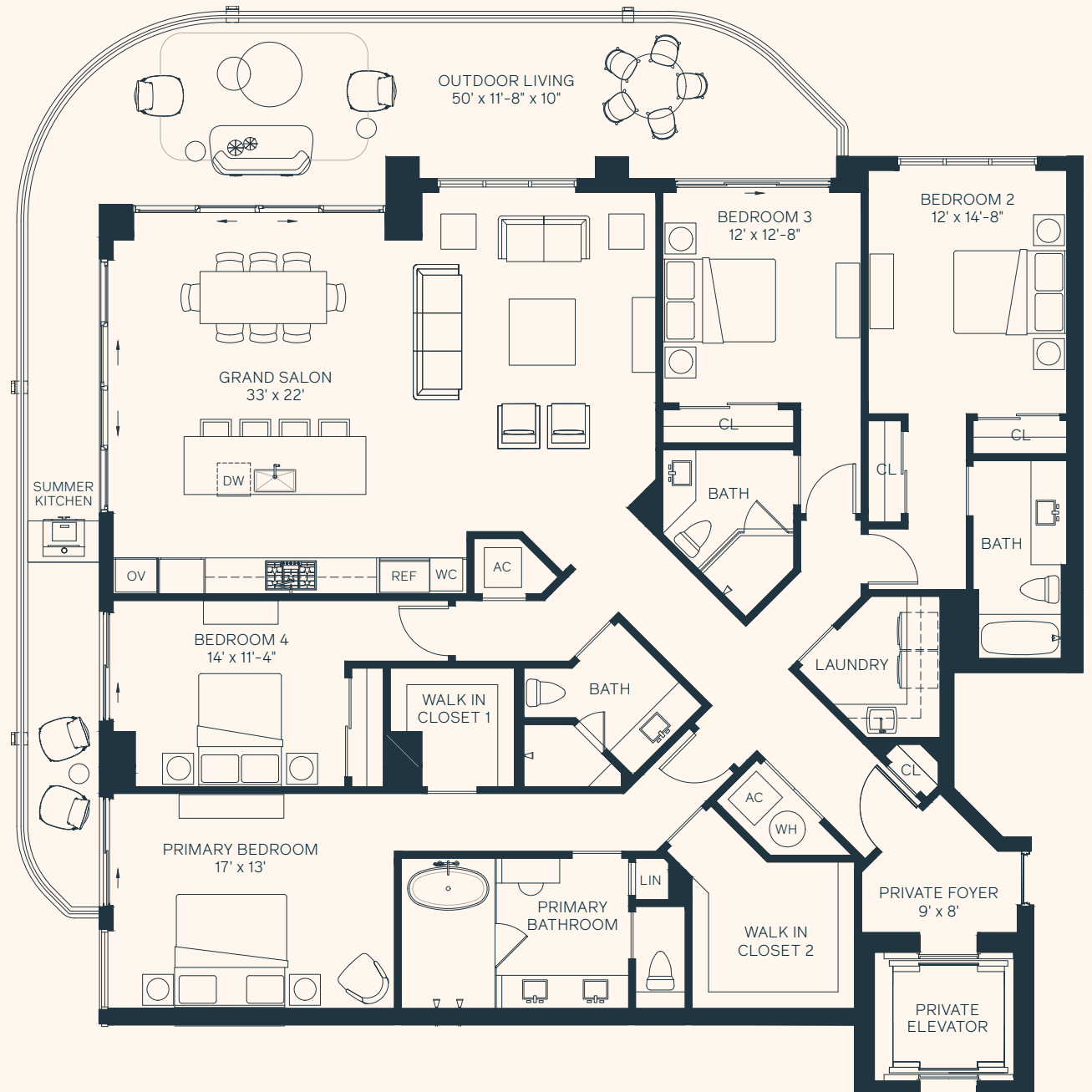
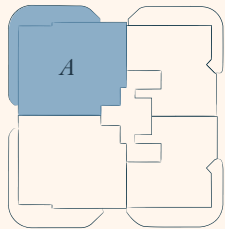
# RESIDENCE A

4 Bedrooms & 4 Bathrooms

Interior 2,829 SF | 263 M<sup>2</sup>

Exterior 691 SF | 64 M<sup>2</sup>

Total 3,526 SF | 327 M<sup>2</sup>



ⓘ THE DIMENSIONS STATED FOR THIS FLOOR PLAN ARE APPROXIMATE BECAUSE THERE ARE VARIOUS RECOGNIZED METHODS FOR CALCULATING THE SQUARE FOOTAGE OF A UNIT. THE SQUARE FOOTAGE STATED HERE IS CALCULATED FROM THE EXTERIOR BOUNDARIES OF THE EXTERIOR WALLS TO THE CENTERLINE OF INTERIOR DEMISING WALLS WITHOUT DEDUCTIONS FOR CUTOUPS, CURVES, OR ARCHITECTURAL FEATURES. THIS METHOD TYPICALLY RESULTS IN QUOTED DIMENSIONS GREATER THAN THE DIMENSIONS THAT WOULD BE DETERMINED BY USING OTHER ACCEPTED METHODS. THE DEFINITION OF "UNIT" AND THE CALCULATION METHOD TO BE RELIED UPON IS SET FORTH BY THE DEVELOPER IN DEVELOPER'S PROSPECTUS WHICH METHOD MAY RESULT IN A SQUARE FOOTAGE CALCULATION LESS THAN THE RESULT OF THE CALCULATION METHOD USED HERE. CONSULT THE DEVELOPER'S PROSPECTUS TO LEARN WHAT IS INCLUDED WITH UNIT PURCHASE AND TO UNDERSTAND UNIT DIMENSIONS.



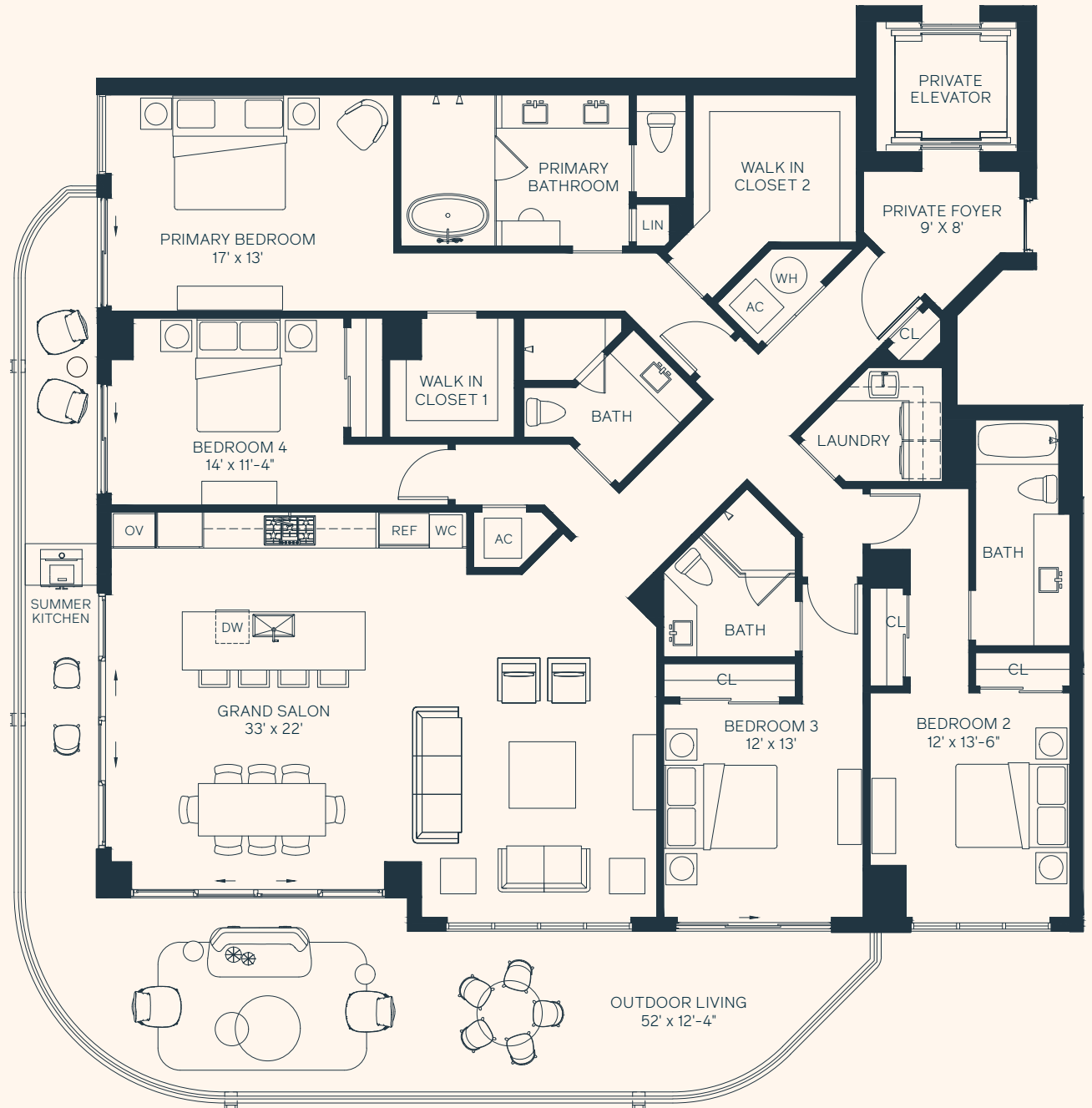
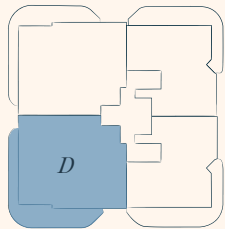
# RESIDENCE *D*

4 Bedrooms & 4 Bathrooms

Interior 2,818 SF | 262 M<sup>2</sup>

Exterior 721 SF | 67 M<sup>2</sup>

Total 3,539 SF | 329 M<sup>2</sup>



ⓘ THE DIMENSIONS STATED FOR THIS FLOOR PLAN ARE APPROXIMATE BECAUSE THERE ARE VARIOUS RECOGNIZED METHODS FOR CALCULATING THE SQUARE FOOTAGE OF A UNIT. THE SQUARE FOOTAGE STATED HERE IS CALCULATED FROM THE EXTERIOR BOUNDARIES OF THE EXTERIOR WALLS TO THE CENTERLINE OF INTERIOR DEMISING WALLS WITHOUT DEDUCTIONS FOR CUTOUPS, CURVES, OR ARCHITECTURAL FEATURES. THIS METHOD TYPICALLY RESULTS IN QUOTED DIMENSIONS GREATER THAN THE DIMENSIONS THAT WOULD BE DETERMINED BY USING OTHER ACCEPTED METHODS. THE DEFINITION OF "UNIT" AND THE CALCULATION METHOD TO BE RELIED UPON IS SET FORTH BY THE DEVELOPER IN DEVELOPER'S PROSPECTUS WHICH METHOD MAY RESULT IN A SQUARE FOOTAGE CALCULATION LESS THAN THE RESULT OF THE CALCULATION METHOD USED HERE. CONSULT THE DEVELOPER'S PROSPECTUS TO LEARN WHAT IS INCLUDED WITH UNIT PURCHASE AND TO UNDERSTAND UNIT DIMENSIONS.