



\*Reference and inspirational images. Design may vary

# 45 years leading, always innovating!

**No. 1**

Panama's main developer and builder

**No. 1**

Option for relocation

**+8000**

Delivered keys

**+160**

Delivered projects

**+15**

Years offering property management services

**+60%**

Expats and foreign clients

**+2000**

Hotel suites from Bern Hotels & Resorts

**+45**

Years of experience

**+35**

Years in the hotel and tourism industries

Invest in a property that allows you to generate  
an income from vacation rentals, and have a  
place to relax and unwind in the highlands of  
Panama, BOQUETE.



The mountain paradise where nature, climate, and a healthy lifestyle come together to offer you a unique living experience, surrounded by tranquility and unmatched beauty.



## CULTURE

Most essential services in the city are within walking distance. Drivers yield to pedestrians and drive more slowly and courteously.



## NUMBER 1

The city of Boquete, in the mountains, is rated as the best retirement destination in the world and has one of the largest communities of retirees.



## WEATHER

Boquete is known for its 'eternal spring' climate, ideal for those seeking a pleasant environment year-round, surrounded by nature



## BOOMING MARKET

With accelerated growth and high tourist demand, Boquete offers a solid investment with high return potential.



## CONVENIENCE

The city of Boquete has a great commercial and gastronomic offer. Its lifestyle is very healthy, and people often eat organic products that go from farm to table.



## RESIDENCY

Investing in real estate in Panama offers the possibility of obtaining permanent residency in just 45 days, facilitating a smooth transition for retirees and investors.





Towards Volcán Barú

Towards the coffee plantation area

Towards the City of David

Scan to discover more:



**PINOALTO**  
BOQUETE COUNTRY CLUB



### Town of Boquete

- Otaku Sushi  
Big Daddy's  
Grill Sugar and  
Spice Tre Scalini
- Café Unido  
Vintage Café  
Boquete Geisha
- Empresas Bern  
Sales Office
- Multibank  
Caja de Ahorros  
Banco General  
Global Bank
- Doit Center  
Orgánica  
Romero



### Feria de las Flores



### Parks

- Biblioteca Ecoparque
- Cerro La Cruz



### Coffee plantations

- Café Castelara
- Granja La Micaela
- Cafetales de Volcancito



### Lookout



### Coffee shop

- Kotowa Coffee House



### Restaurants and bakeries

- Fresas Mary
- Patelería la Alemana



### Supermarkets and shops

- El Rey
- Plaza San Francisco
- Towards Federal Mall

# EVERYTHING CLOSE BY...

Prime location in the highlands of Chiriquí, at 3,600 feet above sea level, offering a cool and pleasant climate.

- ▶ Located in the new Ruta Sur.
- ▶ 5 minute drive to the town of Boquete.
- ▶ 30 minute drive to the the city of David.
- ▶ 45 minute drive to Volcán and Cerro Punta.
- ▶ 50 minute flight from and to Panama City.



# BOQUETE COUNTRY CLUB



**PINOALTO**  
BOQUETE COUNTRY CLUB

**PHASE III**

**PHASE II**

**PHASE I**

\*Reference and inspirational images. Design may vary

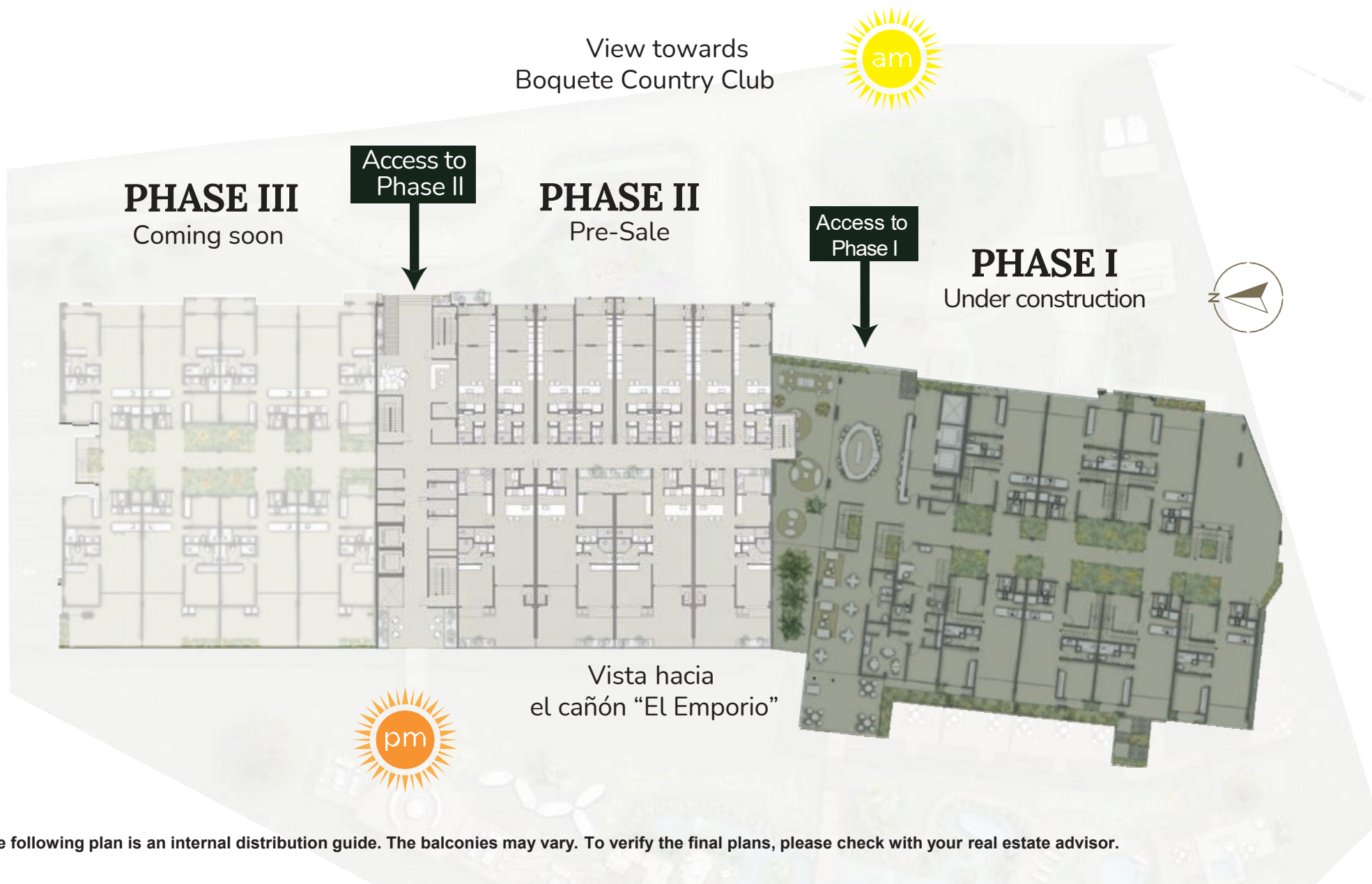


\*Reference and inspirational images. Design may vary



\*Reference and inspirational images. Design may vary

# PINOALTO MASTER PLAN



\*The following plan is an internal distribution guide. The balconies may vary. To verify the final plans, please check with your real estate advisor.



# AMENITIES

Pinoalto is a luxury oasis in Boquete, where every amenity is designed to enrich your life and promote well-being.

Set in a spectacular natural environment, these **spaces inspire** moments of tranquility and connection with the community.

Backed by **be**y Empresas Bern, the project ensures **efficient management** of its social areas and offers commercialization options to maximize your return on investment. Here, every detail is carefully considered to provide you with an exclusive lifestyle where nature and luxury converge, bringing **your dreams and future to life**.

Our amenities include:

- Fire pit areas
- Heated jacuzzis and swimming pool
- Co-working space with a meeting room
- Restaurant & bar
- Barbecue area
- Hammock area

**PINOALTO, YOUR DREAM  
ESCAPE AWAITS**



\*Reference and inspirational images. Design may vary



\*Reference and inspirational images. Design may vary



\*Reference and inspirational images. Design may vary

# CONDO SUITES<sup>®</sup>

Units with short-term rental permits, delivered fully furnished with luxury finishes.

Ideal for investors who frequently visit Panama and want to rent out their units while they're away.

---

Modern comfort: furnished and elegant units starting at 603 sq. ft.

---

Adapted to the new trends of shared economies.

---

A unique sector with high demand for tourism.

Ideal for short-term rentals: perfect for vacationers seeking peace and relaxation.

---

A profitable business model with administrative management and specialized merchandising.

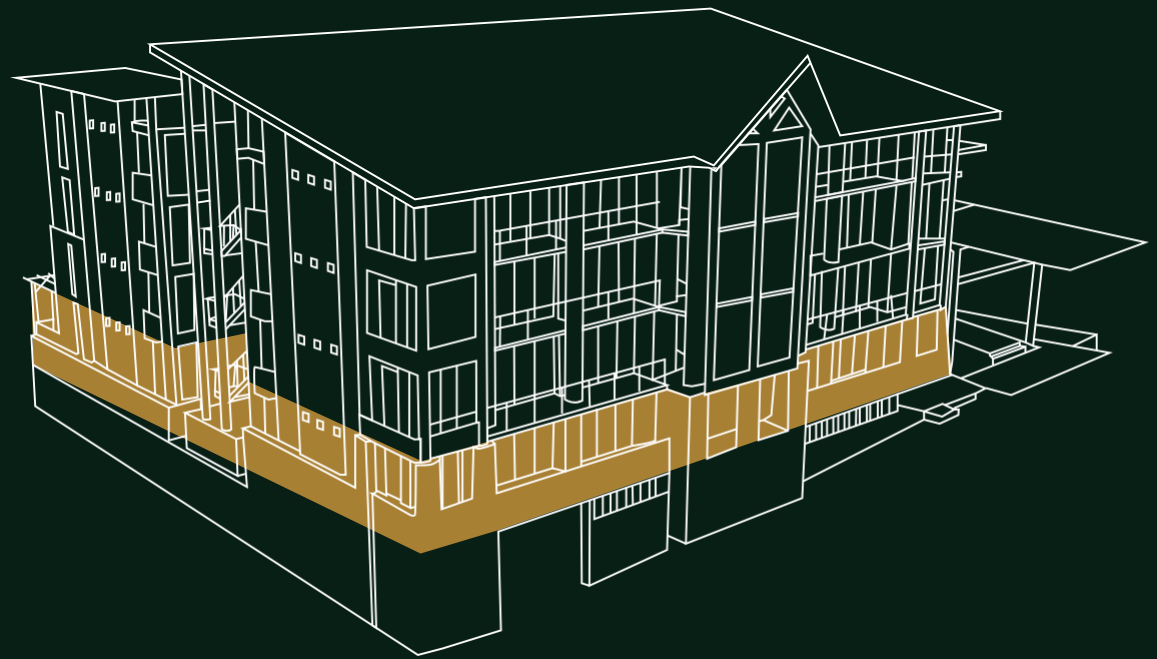
---

Higher ROI than traditional rentals.



# PHASE II

Level 000



View towards Boquete Country Club



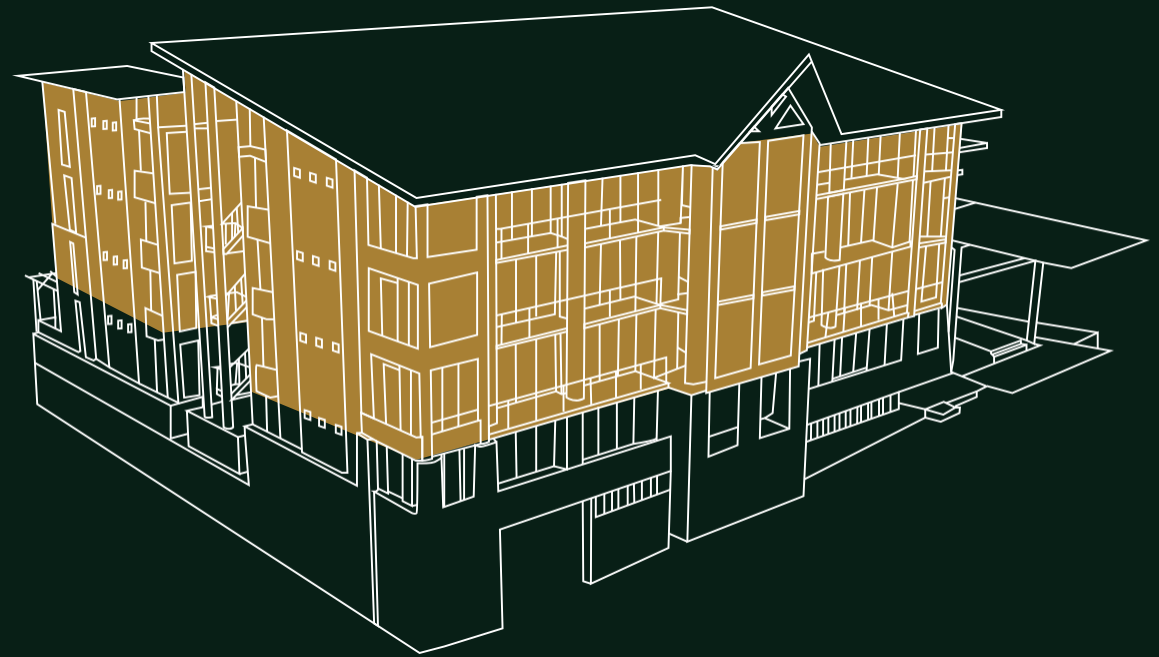
12 UNITS PER LEVEL

- 4 units of 603 sq.ft.
- 2 units of 613 sq.ft.
- 2 units of 646 sq.ft.
- 4 units of 1,464 sq.ft.

Vista towards "El Emporio" canyon

# PHASE II

Levels 100, 200 y 300



View towards Boquete Country Club



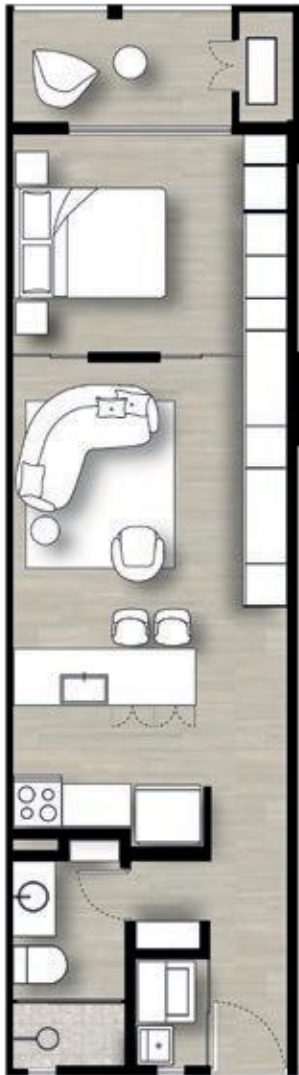
View towards "El Emporio" canyon

12 UNITS PER LEVEL

- 2 units of 613 sq.ft.
- 4 units of 603 sq.ft.
- 2 units of 646 sq.ft.
- 4 units of 1,141 sq.ft.

# PHASE II

Typical floor plan for units from 603 sq.ft. to 646 sq.ft.



1 Bedroom

1 Bathroom

32 units in all phase II

\*The following plan is for internal distribution guidance. The balconies of the units vary by footage and typology. Consult and validate final plans of each unit with your advisor.

# PHASE II

Typical floor plan for units  
from 1,141 sq.ft. to 1,464 sq.ft.

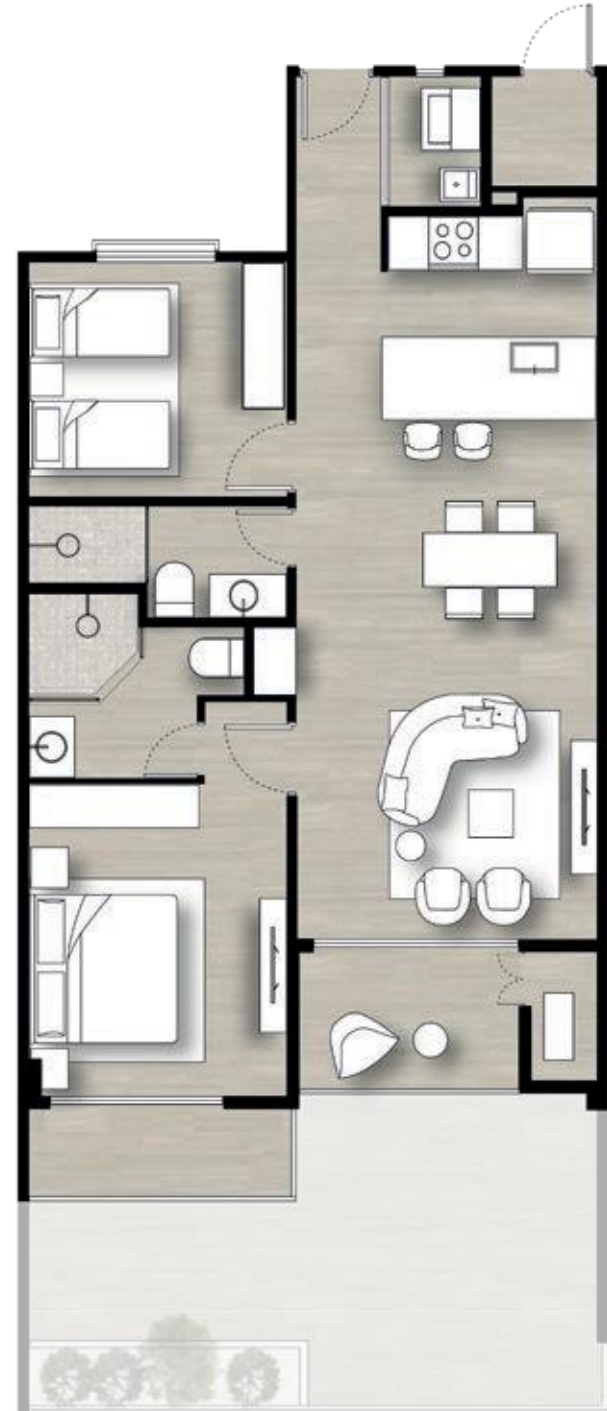
2 Bedrooms

2 Bathrooms

Large terrace-type balcony  
(in 1464 sq.ft. units)

16 units in all phase II

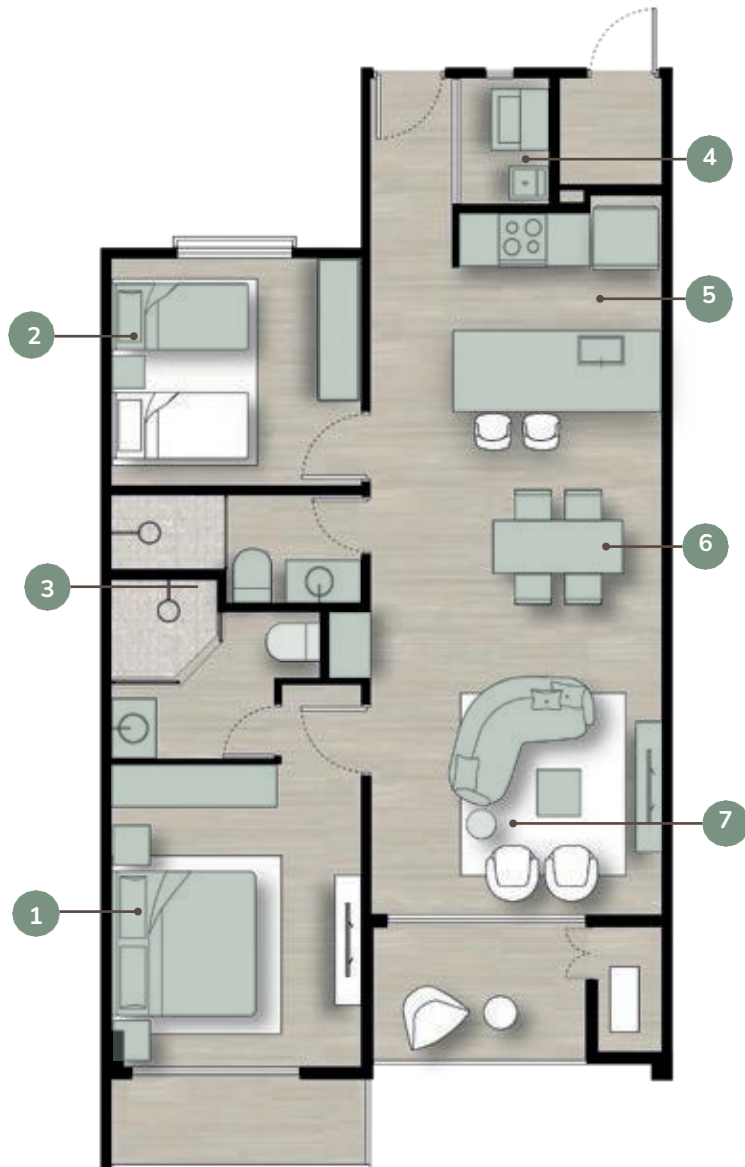
\*The following plan is for internal distribution guidance.  
The balconies of the units vary by footage and typology.  
Consult and validate final plans of each unit with your  
advisor.



# PHASE II

Furniture included.

Units from 1,141 sq.ft. to 1,464 sq.ft.



## 1. Main bedroom:

- Queen bed
- Nightstand
- Wardrobes
- Curtains
- Lighting

## 2. Secondary bedroom:

- Bed with nightstand
- Wardrobes
- Curtains
- Lighting

## 3. Bathrooms:

- Bathroom fixtures and furniture
- Lighting

## 4. Laundry:

- Washer/dryer unit
- Laundry Sink
- Lighting

## 5. Kitchen:

- Kitchen Appliances (refrigerator, stove and microwave)
- Lighting

## 6. Dining area:

- Dining table with 4 chairs
- Lighting

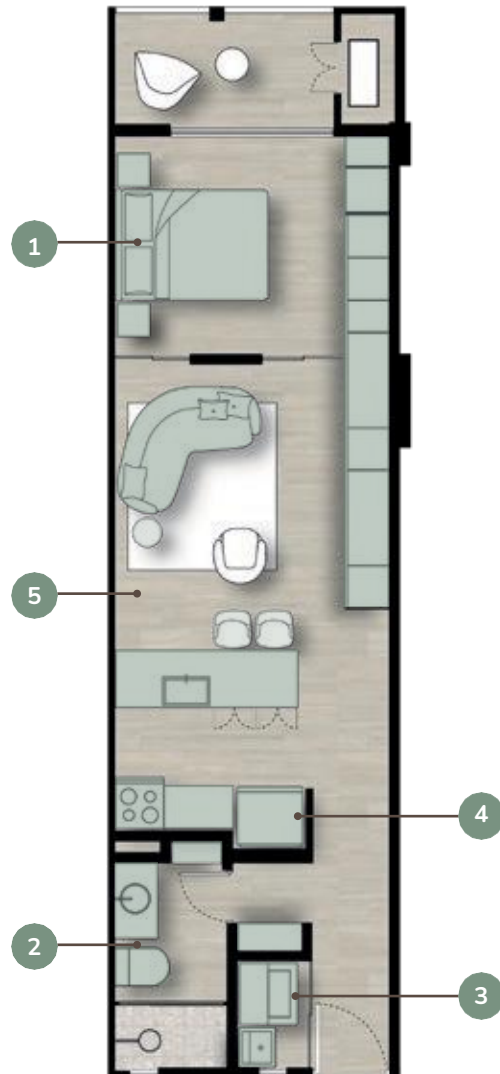
## 7. Living room:

- Sofa
- TV furniture
- Coffee table
- Lighting

# PHASE II

Furniture included.

Units from 603 sq.ft. to 646 sq.ft.



## 1. Main bedroom:

- Queen bed
- Nightstand
- Wardrobes
- Curtains
- Lighting

## 2. Bathroom:

- Bathroom fixtures and furniture
- Lighting

## 3. Laundry:

- Washer/dryer unit
- Laundry Sink
- Lighting

## 4. Kitchen:

- Kitchen Appliances (refrigerator, stove and microwave)
- 2 stools
- Lighting

## 5. Living-dining room:

- Sofa
- Multipurpose Unit
- Coffee table
- Lighting



\*Reference and inspirational images. Design may vary



\*Reference and inspirational images. Design may vary



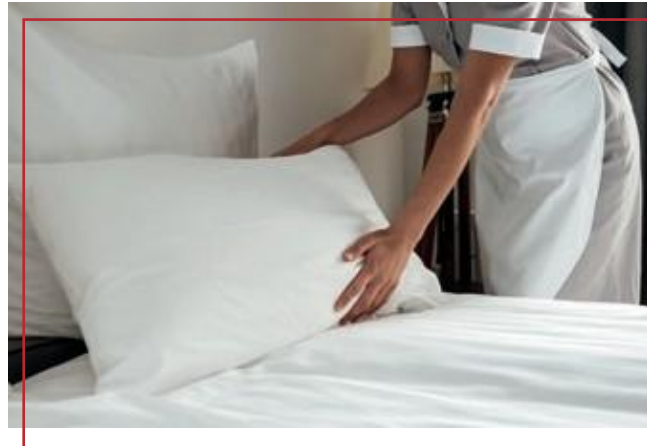
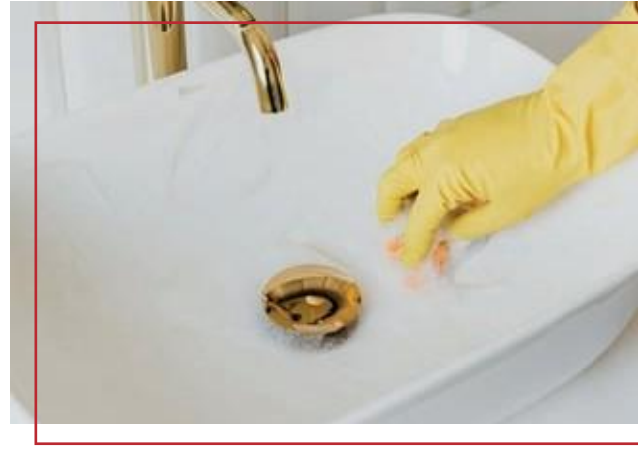
**be. by Empresas Bern** is the company managing the project, offering a specialized platform that keeps owners updated at all times. Additionally, it provides optional marketing and sales services for the Condo Suites on various short-term rental platforms, adding extra value.

**Dive into this community!**



## BENEFITS AS AN OWNER

- Concierge service
- Full cleaning and preparation service for the Condo Suite with specialized housekeeping.
- Marketing of Condo Suites on digital and tourism platforms.
- Rental collection and deposit.
- Third party damage insurance.



**be.** your best self





EMPRESAS  
**BERN**



A project bearing the Bern Companies seal. With 47 years of leadership, always innovating.

PH Bayfront Tower, Ave. Balboa | Edificio Bandera, Casco Antiguo  
Plaza del Este, Costa del Este | Bajo Boquete, Chiriquí | Playa Bonita, Veracruz

[empresasbern.com](http://empresasbern.com) | [info@empresasbern.com](mailto:info@empresasbern.com) | +507 6679-2204 | @empresasbern