



SEASIDE

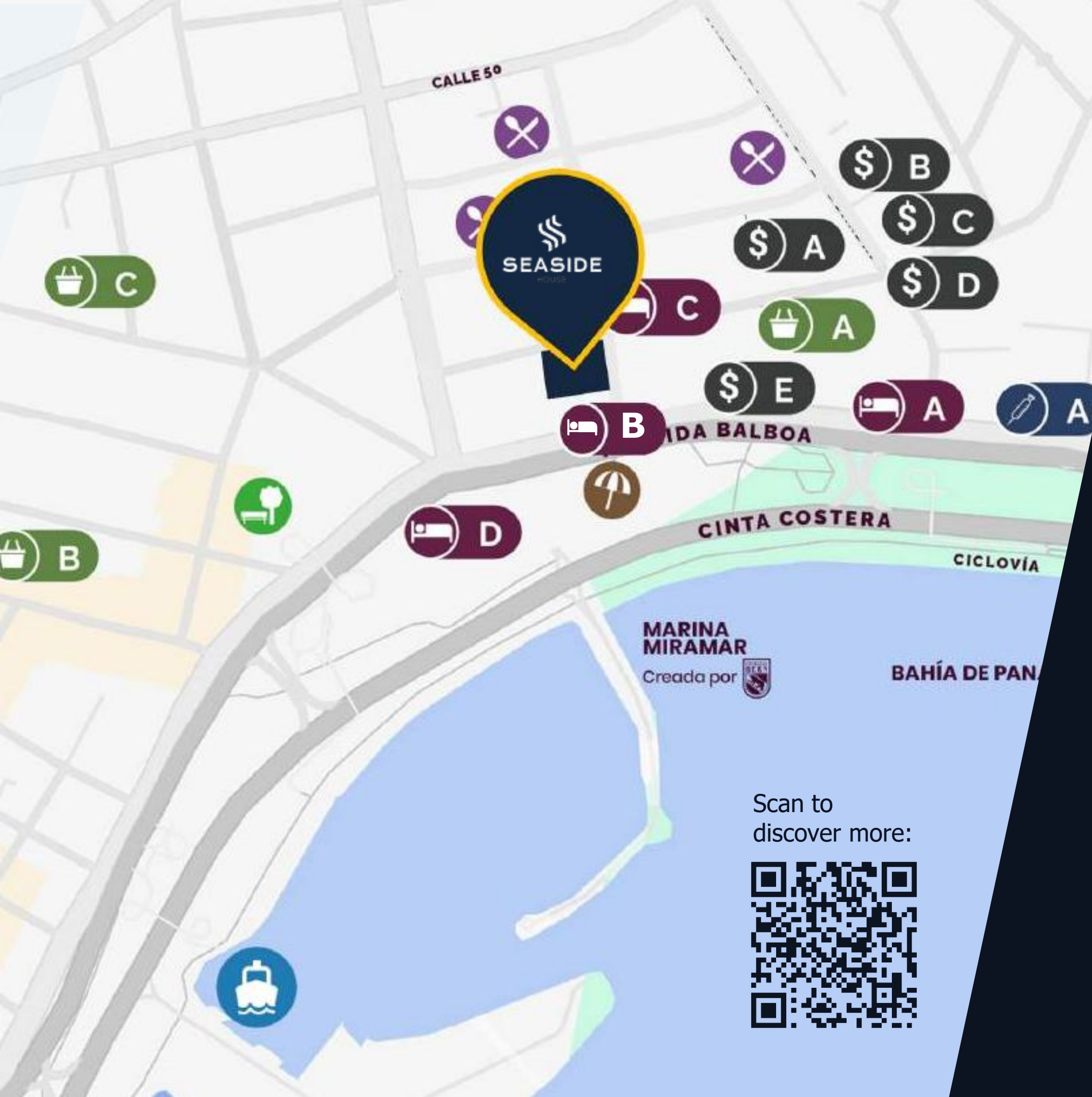
ELEVATED EXPERIENCE



A wide-angle, panoramic photograph of a city skyline at dusk or night. The sky is a deep, layered blue with wispy clouds. The city is illuminated with various lights, including warm yellow and orange lights from buildings and streets, and cooler blue and purple lights from some skyscrapers. The lights reflect on the calm water in the foreground. The word "SEASIDE" is written in white, spaced-out capital letters in the upper right quadrant. A thin white vertical line with a small white dot at the top points from the letter 'S' in "SEASIDE" down to a specific building in the skyline.

SEASIDE

Beyond the sea's horizon, Seaside transcends the skyline —and your imagination.



Everything You Need Nearby

HOTELS

- A** Hilton Panamá
- B** Le Méridien Panamá
- C** Waldorf Astoria Panamá
- D** Intercontinental Miramar

BANKS

- A** Banesco
- B** Scotiabank
- C** Banistmo
- D** BAC Credomatic
- E** Davivienda

SUPERMARKETS

- A** Foodie Market
- B** Supermercados Rey
- C** Riba Smith

MEDICAL CENTERS

- A** Stem Cell Institute

Scan to discover more:





*Construction progress January 2026.



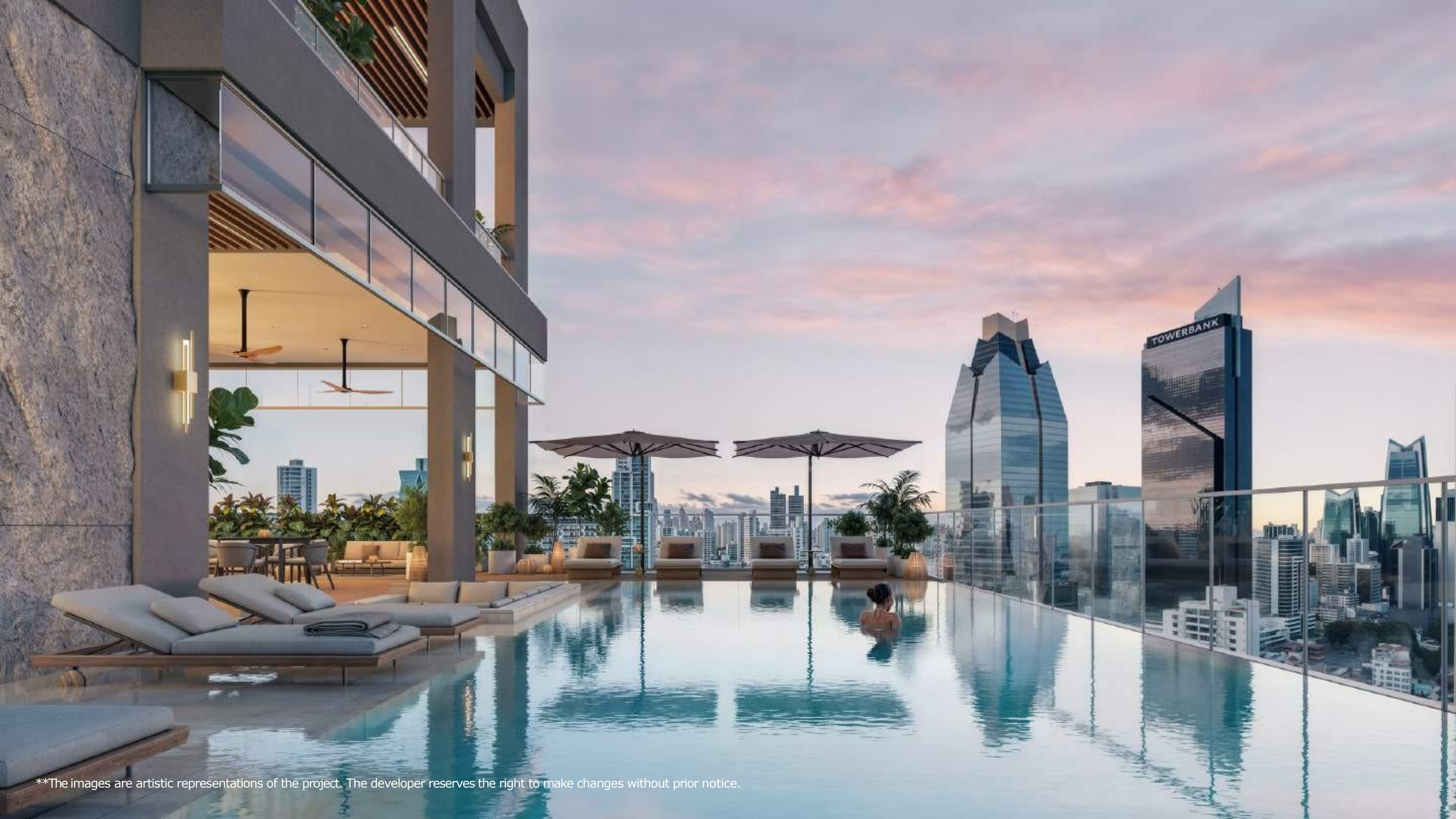
*The images are artistic representations of the project. The developer reserves the right to make changes without prior notice.



LEVEL 2600



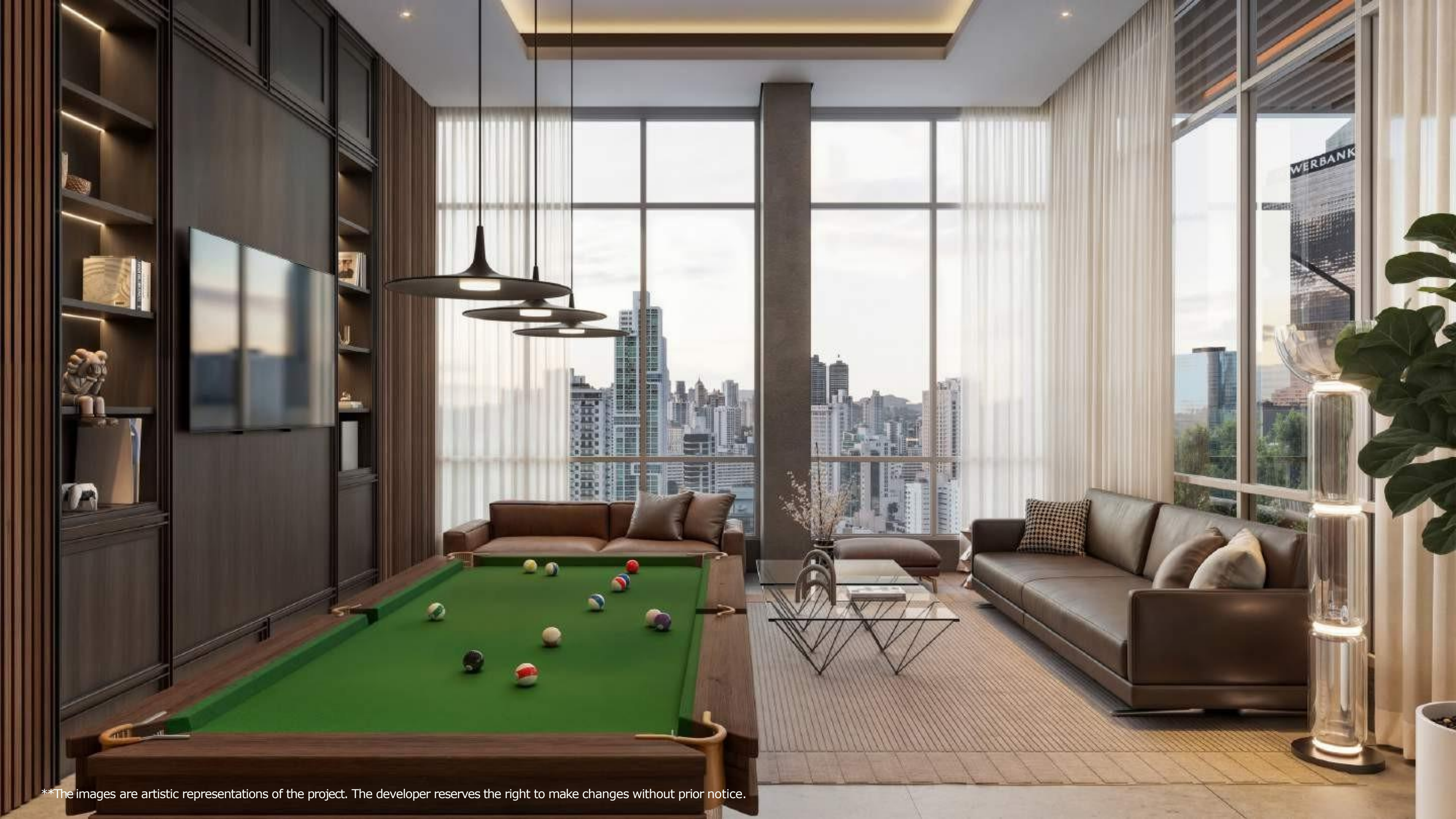
**The images are artistic representations of the project. The developer reserves the right to make changes without prior notice.



**The images are artistic representations of the project. The developer reserves the right to make changes without prior notice.



LEVEL 2700



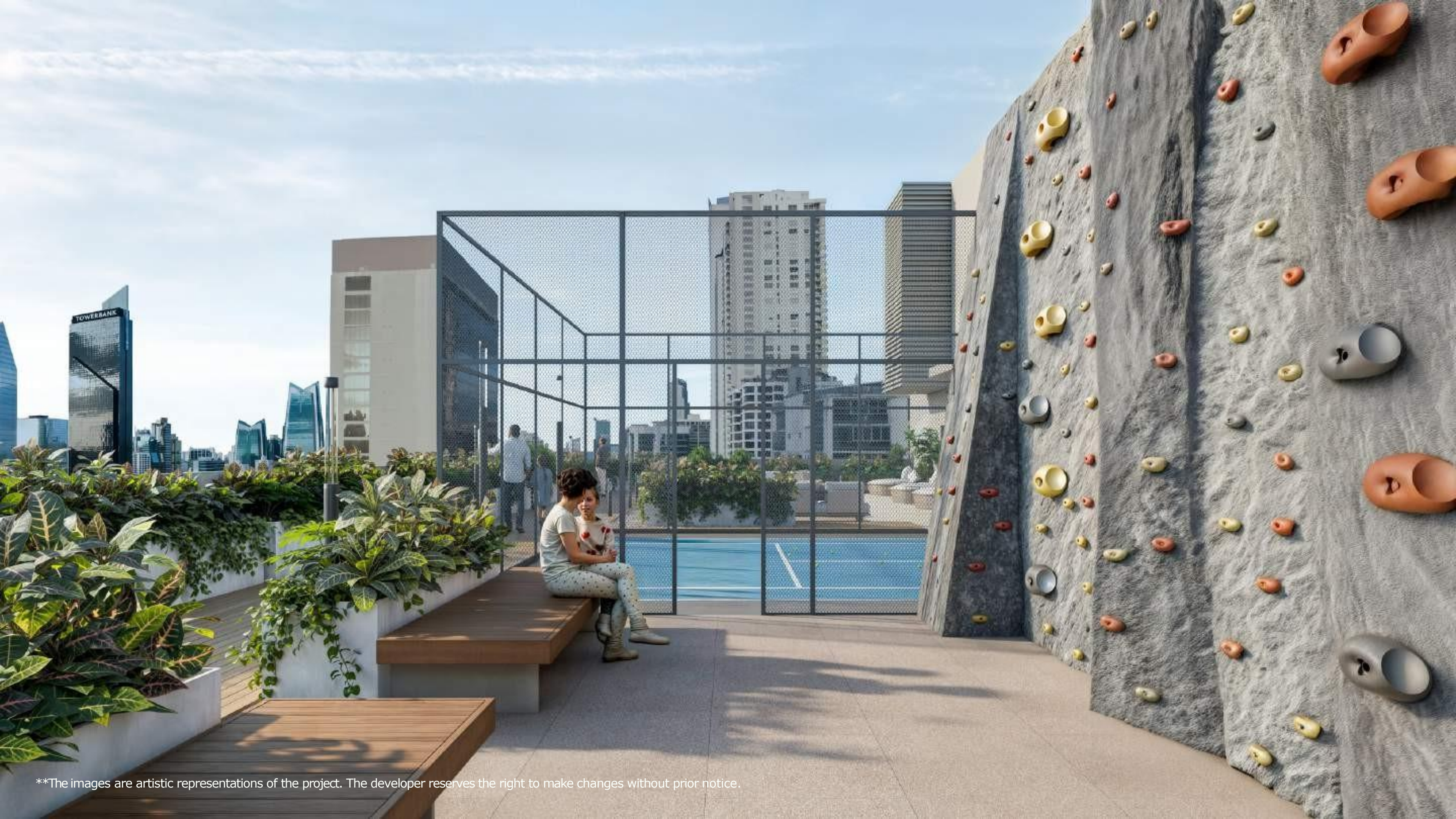
**The images are artistic representations of the project. The developer reserves the right to make changes without prior notice.



**The images are artistic representations of the project. The developer reserves the right to make changes without prior notice.



LEVEL 2800



**The images are artistic representations of the project. The developer reserves the right to make changes without prior notice.



**The images are artistic representations of the project. The developer reserves the right to make changes without prior notice.

HOTEL LE MÉRIDIEN

A 64 m²

H 64 m²

G 56 m²



CALLE URUGUAY

B 64 m²

C 64 m²

D 64 m²

E 64 m²

F 56 m²

CALLE 47



602.78 sq. ft. (56 M²)



688.89 sq. ft. (64 M²)

- Exclusive 31 LEVEL project
- 100 units of 688.89 sq. ft. (64M²)
- 34 units of 602.78 sq. ft. (56M²)
- 8 levels of parking
- 1 level of basement parking
- Valet parking
- 2 high-speed elevators
- Furniture and appliances.





BERN

DEVELOPER &
REAL ESTATE CO