

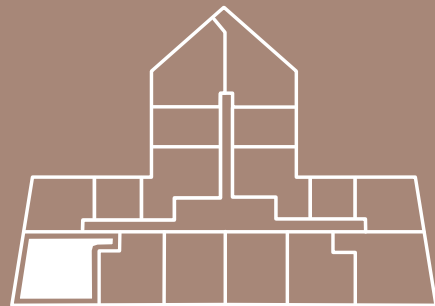


ALHAMBRA PARC

RESIDENCE 01 LEVELS 5-8

3 BED + 3.5 BATH
STUDIO/DEN
2 BALCONIES

INTERIOR: 1,969 SQ. FT.
BALCONY 1: 220 SQ. FT.
BALCONY 2: 71 SQ. FT.
TOTAL: 2,260 SQ. FT.



The drawings, specifications, dimensions and any other information in these floor plans are conceptual and for illustration purposes only and should not be relied upon. References should be made to the plans and specifications at Builder's office for accurate detailed information of the floor plans including calculation of square footage, dimensions, and other information.

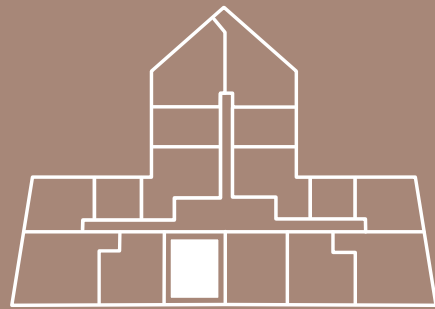


ALHAMBRA PARC

RESIDENCE 03 LEVELS 5-8

2 BED + 2.5 BATH
STUDIO/DEN
1 BALCONY

INTERIOR: 1,621 SQ. FT.
BALCONY: 142 SQ. FT.
TOTAL: 1,763 SQ. FT.



The drawings, specifications, dimensions and any other information in these floor plans are conceptual and for illustration purposes only and should not be relied upon. References should be made to the plans and specifications at Builder's office for accurate detailed information of the floor plans including calculation of square footage, dimensions, and other information.



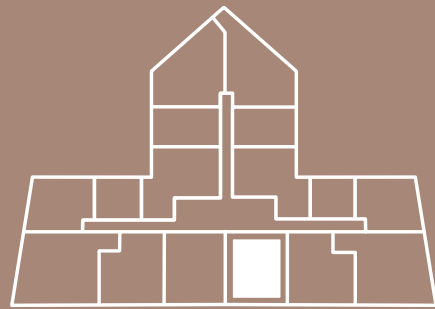


ALHAMBRA PARC

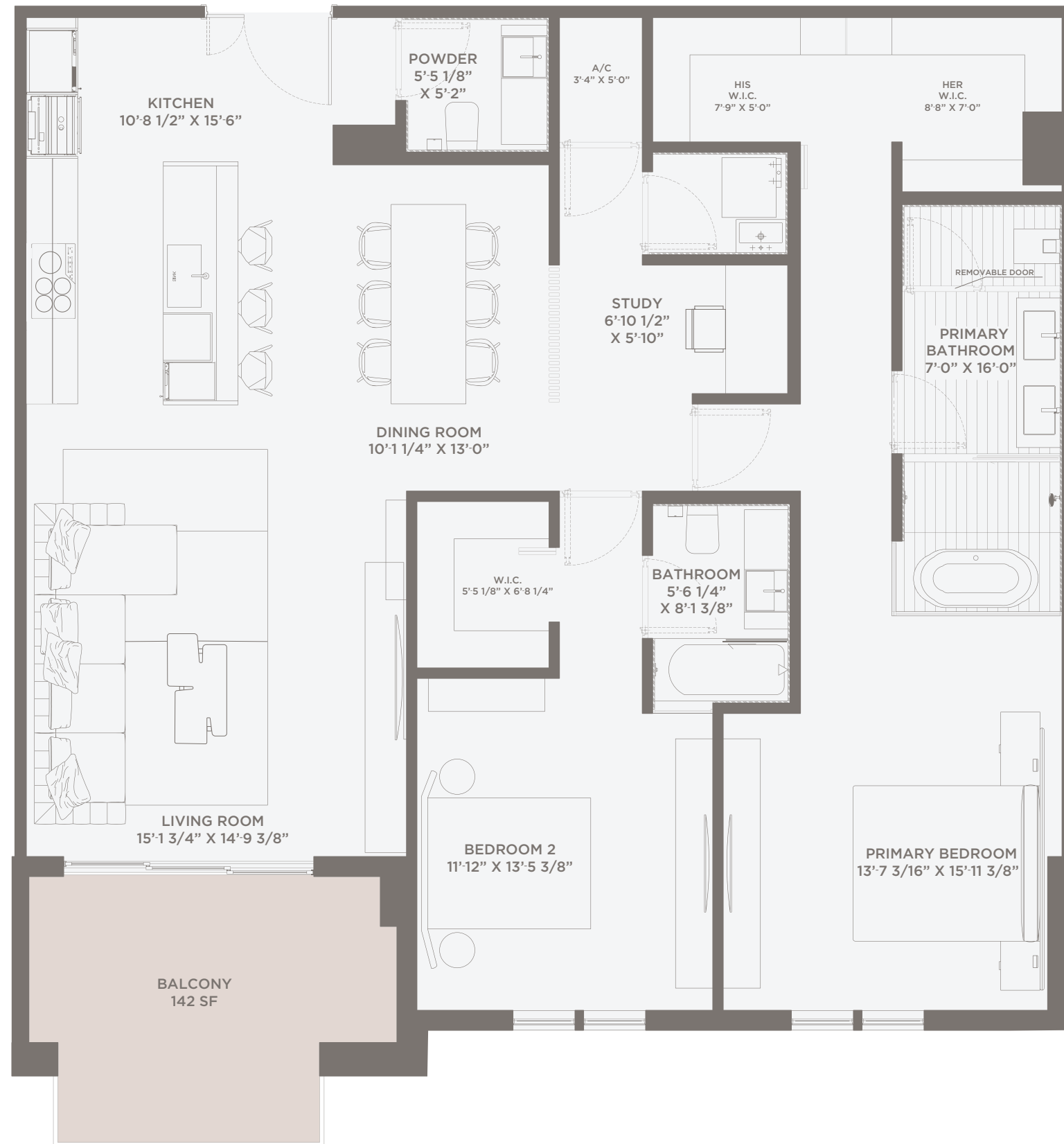
RESIDENCE 04 LEVELS 5-8

2 BED + 2.5 BATH
STUDIO/DEN
1 BALCONY

INTERIOR: 1,621 SQ. FT.
BALCONY: 142 SQ. FT.
TOTAL: 1,763 SQ. FT.



The drawings, specifications, dimensions and any other information in these floor plans are conceptual and for illustration purposes only and should not be relied upon. References should be made to the plans and specifications at Builder's office for accurate detailed information of the floor plans including calculation of square footage, dimensions, and other information.



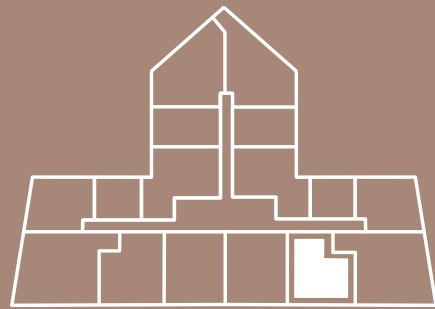


ALHAMBRA PARC

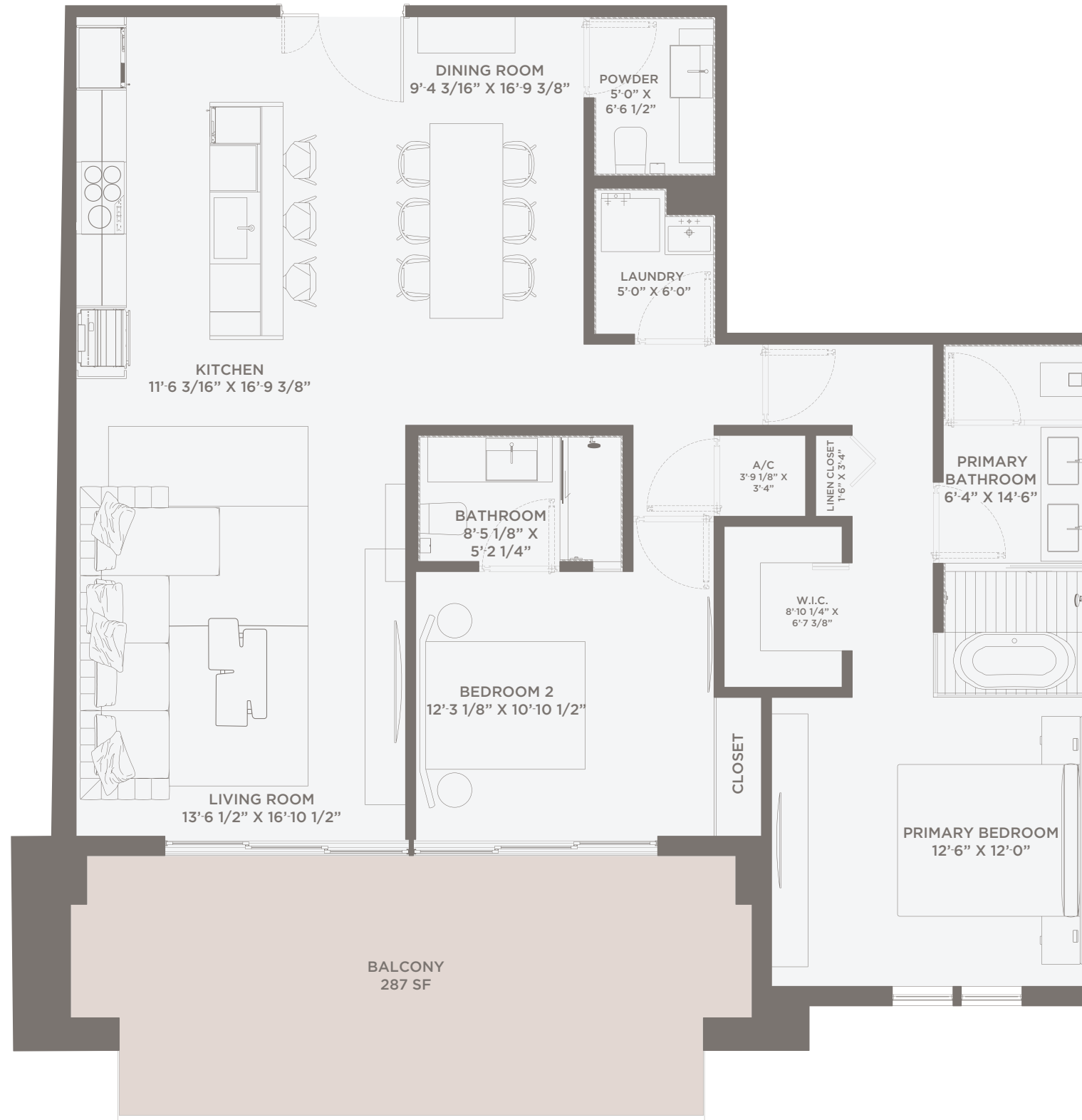
RESIDENCE 05
LEVELS 5-8

2 BED + 2.5 BATH
1 BALCONY

INTERIOR: 1,343 SQ. FT.
BALCONY: 287 SQ. FT.
TOTAL: 1,630 SQ. FT.



The drawings, specifications, dimensions and any other information in these floor plans are conceptual and for illustration purposes only and should not be relied upon. References should be made to the plans and specifications at Builder's office for accurate detailed information of the floor plans including calculation of square footage, dimensions, and other information.



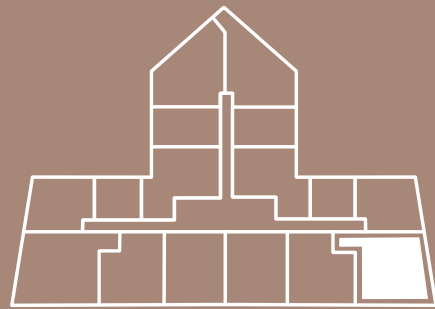


ALHAMBRA PARC

RESIDENCE 06 LEVELS 5-8

3 BED + 3.5 BATH
STUDIO/DEN
2 BALCONIES

INTERIOR: 1,969 SQ. FT
BALCONY 1: 220 SQ. FT
BALCONY 2: 71 SQ. FT
TOTAL: 2,260 SQ. FT



The drawings, specifications, dimensions and any other information in these floor plans are conceptual and for illustration purposes only and should not be relied upon. References should be made to the plans and specifications at Builder's office for accurate detailed information of the floor plans including calculation of square footage, dimensions, and other information.

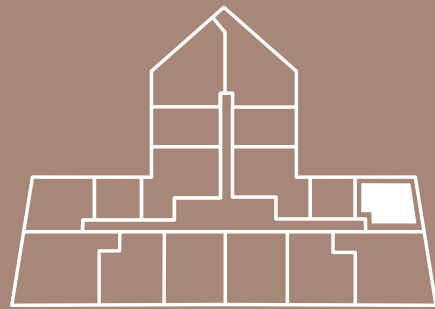


ALHAMBRA PARC

RESIDENCE 07 LEVELS 5-8

2 BED + 2.5 BATH
2 BALCONIES

INTERIOR: 1,677 SQ. FT
BALCONY 1: 132 SQ. FT
BALCONY 2: 71 SQ. FT
TOTAL: 1,880 SQ. FT



The drawings, specifications, dimensions and any other information in these floor plans are conceptual and for illustration purposes only and should not be relied upon. References should be made to the plans and specifications at Builder's office for accurate detailed information of the floor plans including calculation of square footage, dimensions, and other information.



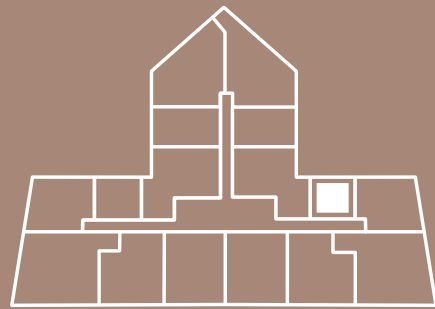


ALHAMBRA PARC

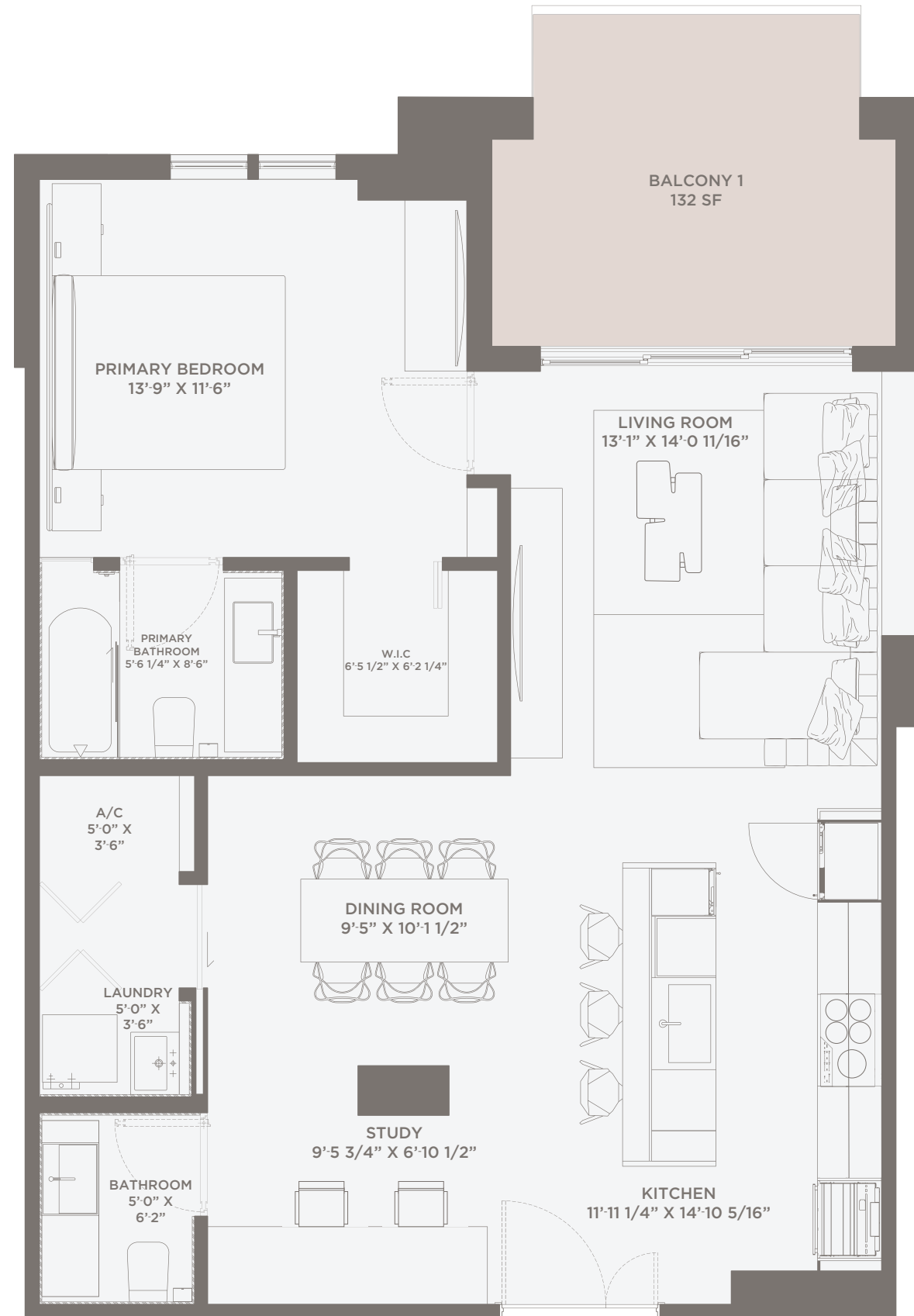
RESIDENCE 08
LEVELS 5-8

1 BED + 2 BATH
STUDIO/DEN
1 BALCONY

INTERIOR: 965 SQ. FT.
BALCONY: 132 SQ. FT.
TOTAL: 1,097 SQ. FT.



The drawings, specifications, dimensions and any other information in these floor plans are conceptual and for illustration purposes only and should not be relied upon. References should be made to the plans and specifications at Builder's office for accurate detailed information of the floor plans including calculation of square footage, dimensions, and other information.



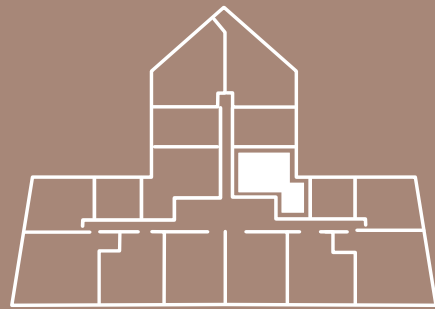


ALHAMBRA PARC

RESIDENCE 09
LEVELS 5-8

2 BED + 2.5 BATH
1 BALCONY

INTERIOR: 1,615 SQ. FT.
BALCONY: 233 SQ. FT.
TOTAL: 1,848 SQ. FT.



The drawings, specifications, dimensions and any other information in these floor plans are conceptual and for illustration purposes only and should not be relied upon. References should be made to the plans and specifications at Builder's office for accurate detailed information of the floor plans including calculation of square footage, dimensions, and other information.



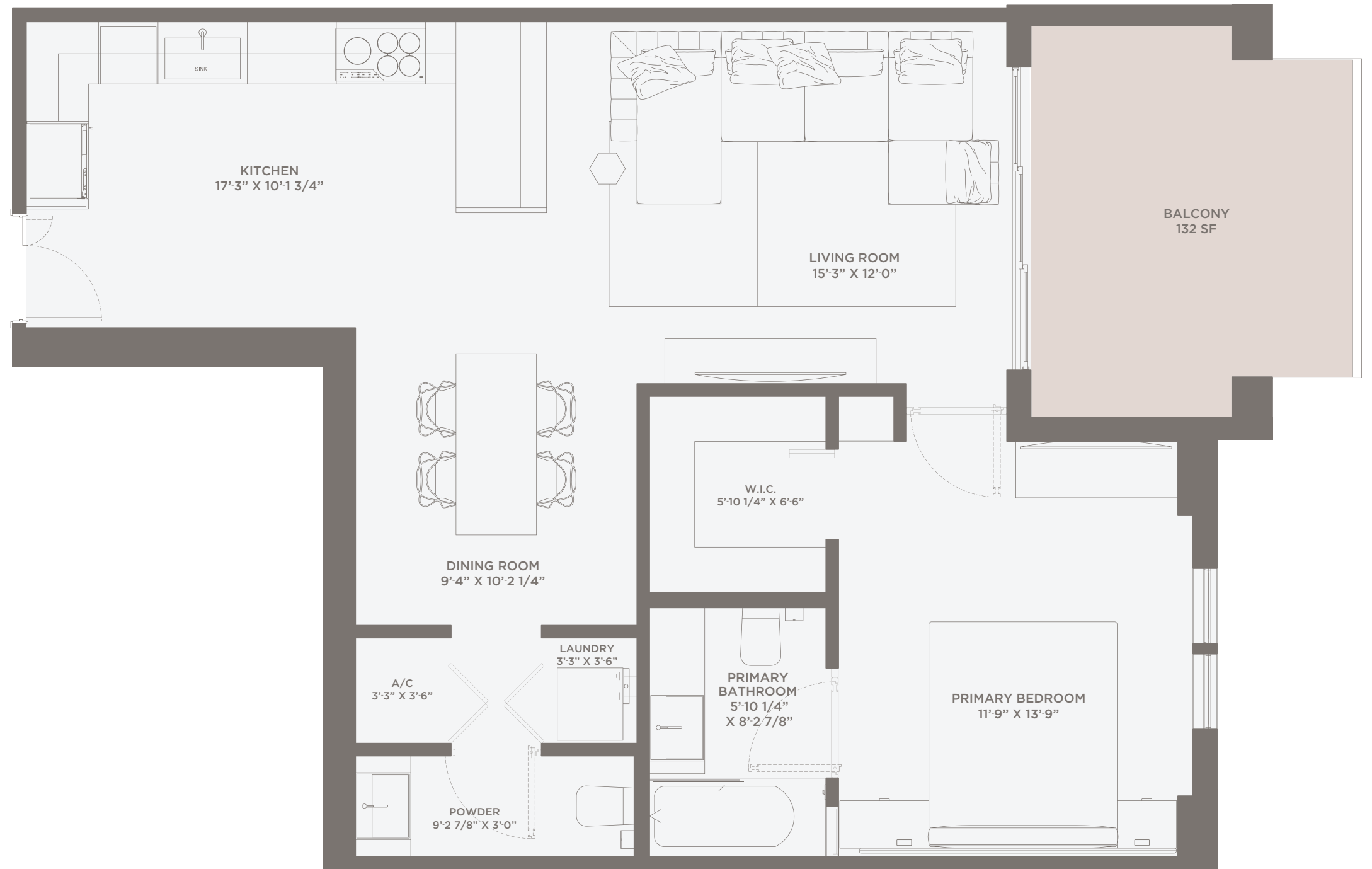
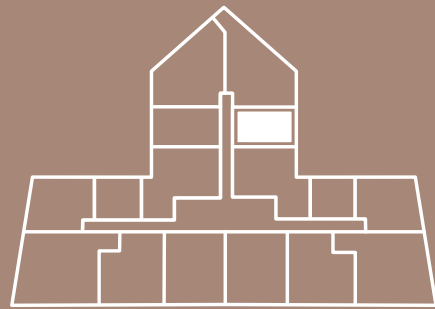


ALHAMBRA PARC

RESIDENCE 10
LEVELS 5-8

1 BED + 1.5 BATH
1 BALCONY

INTERIOR: 858 SQ. FT.
BALCONY: 132 SQ. FT.
TOTAL: 990 SQ. FT.



The drawings, specifications, dimensions and any other information in these floor plans are conceptual and for illustration purposes only and should not be relied upon. References should be made to the plans and specifications at Builder's office for accurate detailed information of the floor plans including calculation of square footage, dimensions, and other information.

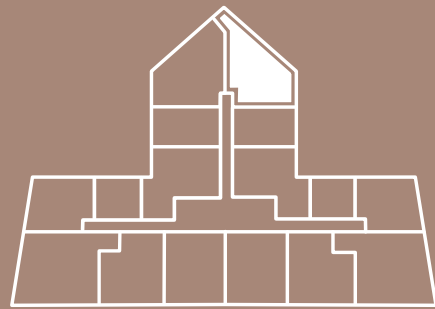


ALHAMBRA PARC

RESIDENCE **11**
LEVELS 5-8

2 BED + 2.5 BATH
STUDIO/DEN
2 BALCONIES

INTERIOR: 1,905 SQ. FT.
BALCONY 1: 148 SQ. FT.
BALCONY 2: 132 SQ. FT.
TOTAL: 2,185 SQ. FT.



The drawings, specifications, dimensions and any other information in these floor plans are conceptual and for illustration purposes only and should not be relied upon. References should be made to the plans and specifications at Builder's office for accurate detailed information of the floor plans including calculation of square footage, dimensions, and other information.



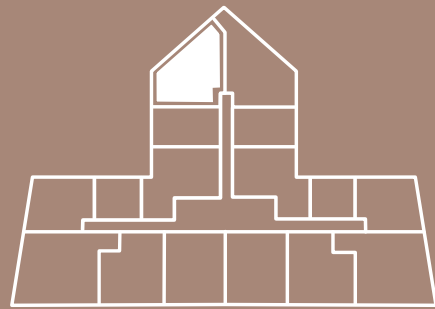


ALHAMBRA PARC

RESIDENCE 12 LEVELS 5-8

2 BED + 2.5 BATH
STUDIO/DEN
2 BALCONIES

INTERIOR: 1,665 SQ. FT.
BALCONY 1: 147 SQ. FT.
BALCONY 2: 132 SQ. FT.
TOTAL: 1,944 SQ. FT.



The drawings, specifications, dimensions and any other information in these floor plans are conceptual and for illustration purposes only and should not be relied upon. References should be made to the plans and specifications at Builder's office for accurate detailed information of the floor plans including calculation of square footage, dimensions, and other information.





ALHAMBRA

PARC

RESIDENCE 13

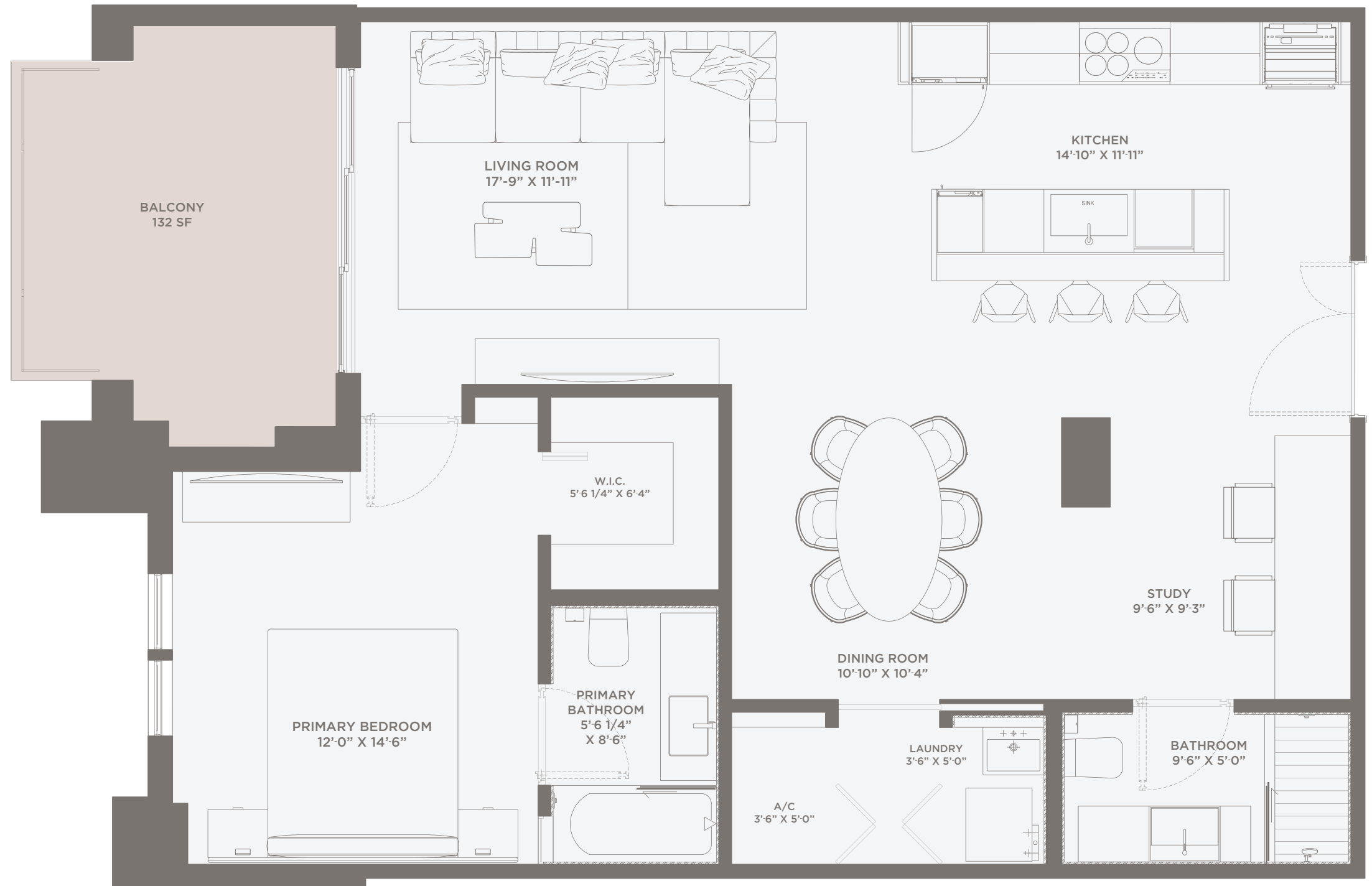
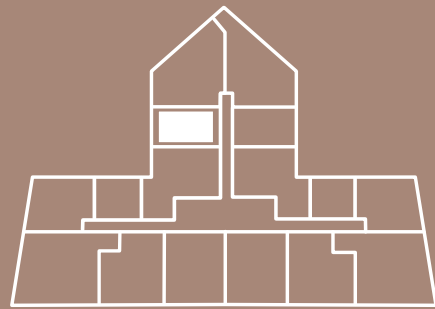
LEVELS 5-8

1 BED + 2 BATH
STUDIO / DEN
1 BALCONY

INTERIOR: 1,036 SQ. FT

BALCONY 1: 132 SQ. FT

TOTAL: 1,168 SQ. FT



The drawings, specifications, dimensions and any other information in these floor plans are conceptual and for illustration purposes only and should not be relied upon. References should be made to the plans and specifications at Builder's office for accurate detailed information of the floor plans including calculation of square footage, dimensions, and other information.

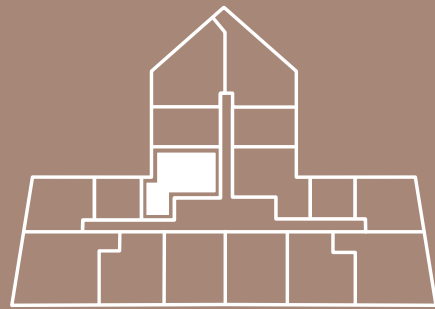


ALHAMBRA PARC

RESIDENCE 14
LEVELS 5-8

2 BED + 2.5 BATH
1 BALCONY

INTERIOR: 1,625 SQ. FT.
BALCONY: 233 SQ. FT.
TOTAL: 1,853 SQ. FT.



The drawings, specifications, dimensions and any other information in these floor plans are conceptual and for illustration purposes only and should not be relied upon. References should be made to the plans and specifications at Builder's office for accurate detailed information of the floor plans including calculation of square footage, dimensions, and other information.



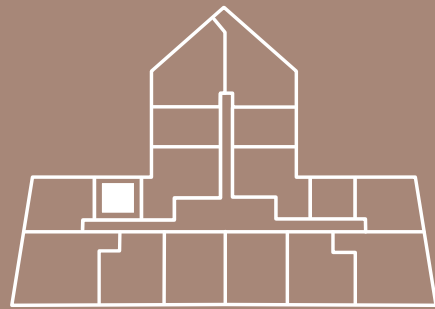


ALHAMBRA PARC

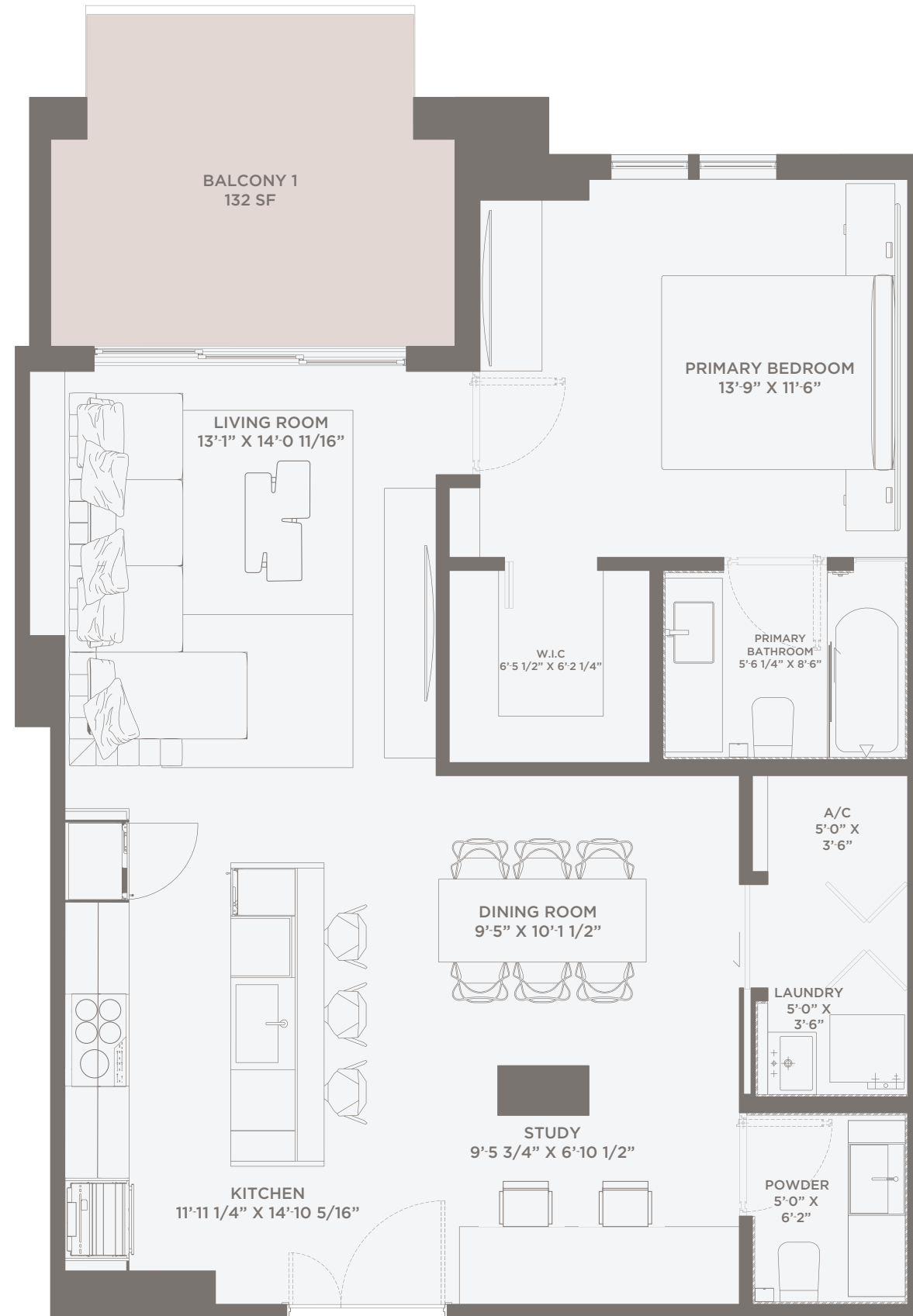
RESIDENCE 15 LEVELS 5-8

1 BED + 1.5 BATH
STUDIO/DEN
1 BALCONY

INTERIOR: 965 SQ. FT
BALCONY 1: 132 SQ. FT
TOTAL: 1,097 SQ. FT



The drawings, specifications, dimensions and any other information in these floor plans are conceptual and for illustration purposes only and should not be relied upon. References should be made to the plans and specifications at Builder's office for accurate detailed information of the floor plans including calculation of square footage, dimensions, and other information.



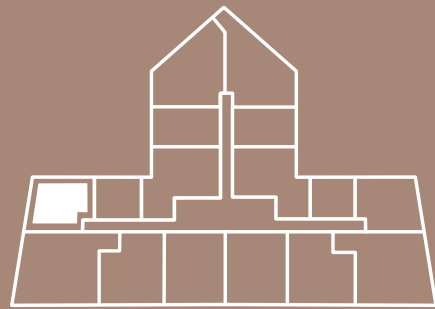


ALHAMBRA PARC

RESIDENCE 16 LEVELS 5-8

2 BED + 2.5 BATH
2 BALCONIES

INTERIOR: 1,677 SQ. FT
BALCONY 1: 132 SQ. FT
BALCONY 2: 71 SQ. FT
TOTAL: 1,880 SQ. FT



The drawings, specifications, dimensions and any other information in these floor plans are conceptual and for illustration purposes only and should not be relied upon. References should be made to the plans and specifications at Builder's office for accurate detailed information of the floor plans including calculation of square footage, dimensions, and other information.

