

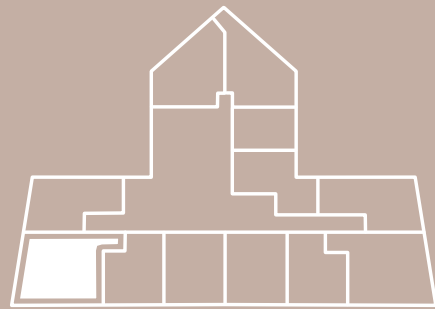


ALHAMBRA PARC

RESIDENCE 01 LEVEL 4

3 BED + 3.5 BATH
STUDIO/DEN
2 BALCONIES

INTERIOR: 1,980 SQ. FT.
BALCONY 1: 496 SQ. FT.
BALCONY 2: 369 SQ. FT.
TOTAL: 2,845 SQ. FT.



The drawings, specifications, dimensions and any other information in these floor plans are conceptual and for illustration purposes only and should not be relied upon. References should be made to the plans and specifications at Builder's office for accurate detailed information of the floor plans including calculation of square footage, dimensions, and other information.

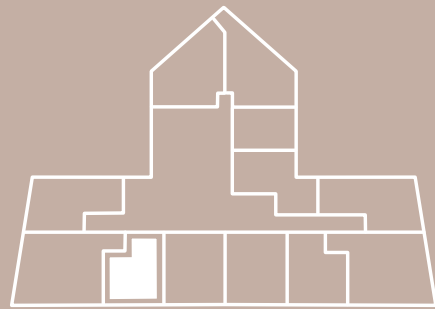


ALHAMBRA PARC

RESIDENCE 02 LEVEL 4

2 BED + 2.5 BATH
2 BALCONIES

INTERIOR: 1,347 SQ. FT.
BALCONY 1: 347 SQ. FT.
BALCONY 2: 100 SQ. FT.
TOTAL: 1,794 SQ. FT.



The drawings, specifications, dimensions and any other information in these floor plans are conceptual and for illustration purposes only and should not be relied upon. References should be made to the plans and specifications at Builder's office for accurate detailed information of the floor plans including calculation of square footage, dimensions, and other information.



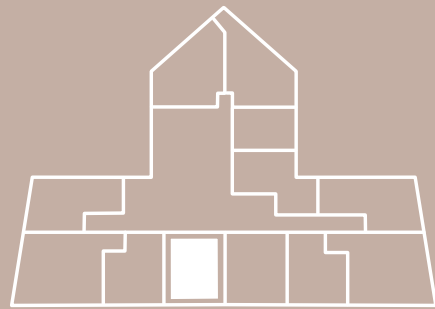


ALHAMBRA PARC

RESIDENCE 03 LEVEL 4

2 BED + 2.5 BATH
STUDIO/DEN
2 BALCONIES

INTERIOR: 1,629 SQ. FT.
BALCONY 1: 204 SQ. FT.
BALCONY 2: 225 SQ. FT.
TOTAL: 2,058 SQ. FT.



The drawings, specifications, dimensions and any other information in these floor plans are conceptual and for illustration purposes only and should not be relied upon. References should be made to the plans and specifications at Builder's office for accurate detailed information of the floor plans including calculation of square footage, dimensions, and other information.



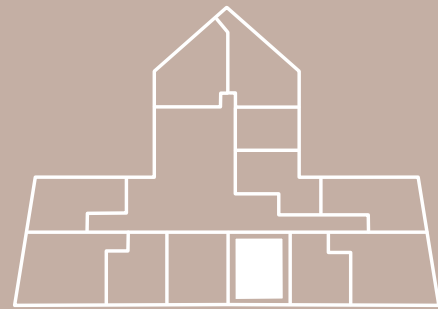


ALHAMBRA PARC

RESIDENCE 04 LEVEL 4

2 BED + 2.5 BATH
STUDIO/DEN
2 BALCONIES

INTERIOR: 1,629 SQ. FT.
BALCONY 1: 204 SQ. FT.
BALCONY 2: 225 SQ. FT.
TOTAL: 2,058 SQ. FT.



The drawings, specifications, dimensions and any other information in these floor plans are conceptual and for illustration purposes only and should not be relied upon. References should be made to the plans and specifications at Builder's office for accurate detailed information of the floor plans including calculation of square footage, dimensions, and other information.



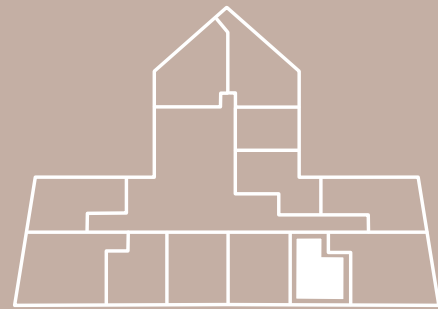


ALHAMBRA PARC

RESIDENCE 05 LEVEL 4

2 BED + 2.5 BATH
2 BALCONIES

INTERIOR: 1,347 SQ. FT.
BALCONY 1: 347 SQ. FT.
BALCONY 2: 100 SQ. FT.
TOTAL: 1,794 SQ. FT.



The drawings, specifications, dimensions and any other information in these floor plans are conceptual and for illustration purposes only and should not be relied upon. References should be made to the plans and specifications at Builder's office for accurate detailed information of the floor plans including calculation of square footage, dimensions, and other information.



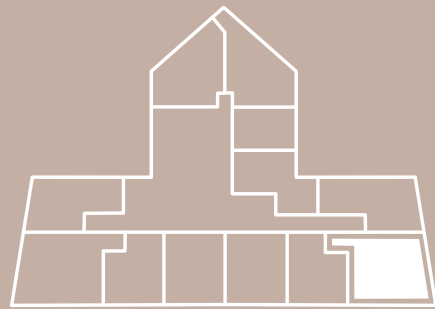


ALHAMBRA PARC

RESIDENCE 06 LEVEL 4

3 BED + 3.5 BATH
STUDIO/DEN
2 BALCONIES

INTERIOR: 1,980 SQ. FT.
BALCONY 1: 496 SQ. FT.
BALCONY 2: 369 SQ. FT.
TOTAL: 2,845 SQ. FT.



The drawings, specifications, dimensions and any other information in these floor plans are conceptual and for illustration purposes only and should not be relied upon. References should be made to the plans and specifications at Builder's office for accurate detailed information of the floor plans including calculation of square footage, dimensions, and other information.



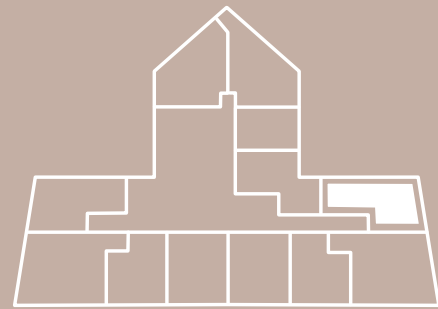
ALHAMBRA PARC

RESIDENCE 07

LEVEL 4

2 BED + 2.5 BATH
FAMILY ROOM
2 BALCONIES

INTERIOR: 1,858 SQ. FT.
BALCONY 1: 1,071 SQ. FT.
BALCONY 2: 369 SQ. FT.
TOTAL: 3,298 SQ. FT.



The drawings, specifications, dimensions and any other information in these floor plans are conceptual and for illustration purposes only and should not be relied upon. References should be made to the plans and specifications at Builder's office for accurate detailed information of the floor plans including calculation of square footage, dimensions, and other information.





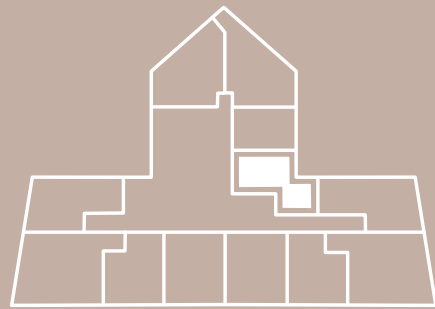
ALHAMBRA PARC

RESIDENCE 08

LEVEL 4

3 BED + 3.5 BATH
STUDIO/DEN
1 BALCONY

INTERIOR: 1,993 SQ. FT.
BALCONY: 629 SQ. FT.
TOTAL: 2,622 SQ. FT.



The drawings, specifications, dimensions and any other information in these floor plans are conceptual and for illustration purposes only and should not be relied upon. References should be made to the plans and specifications at Builder's office for accurate detailed information of the floor plans including calculation of square footage, dimensions, and other information.





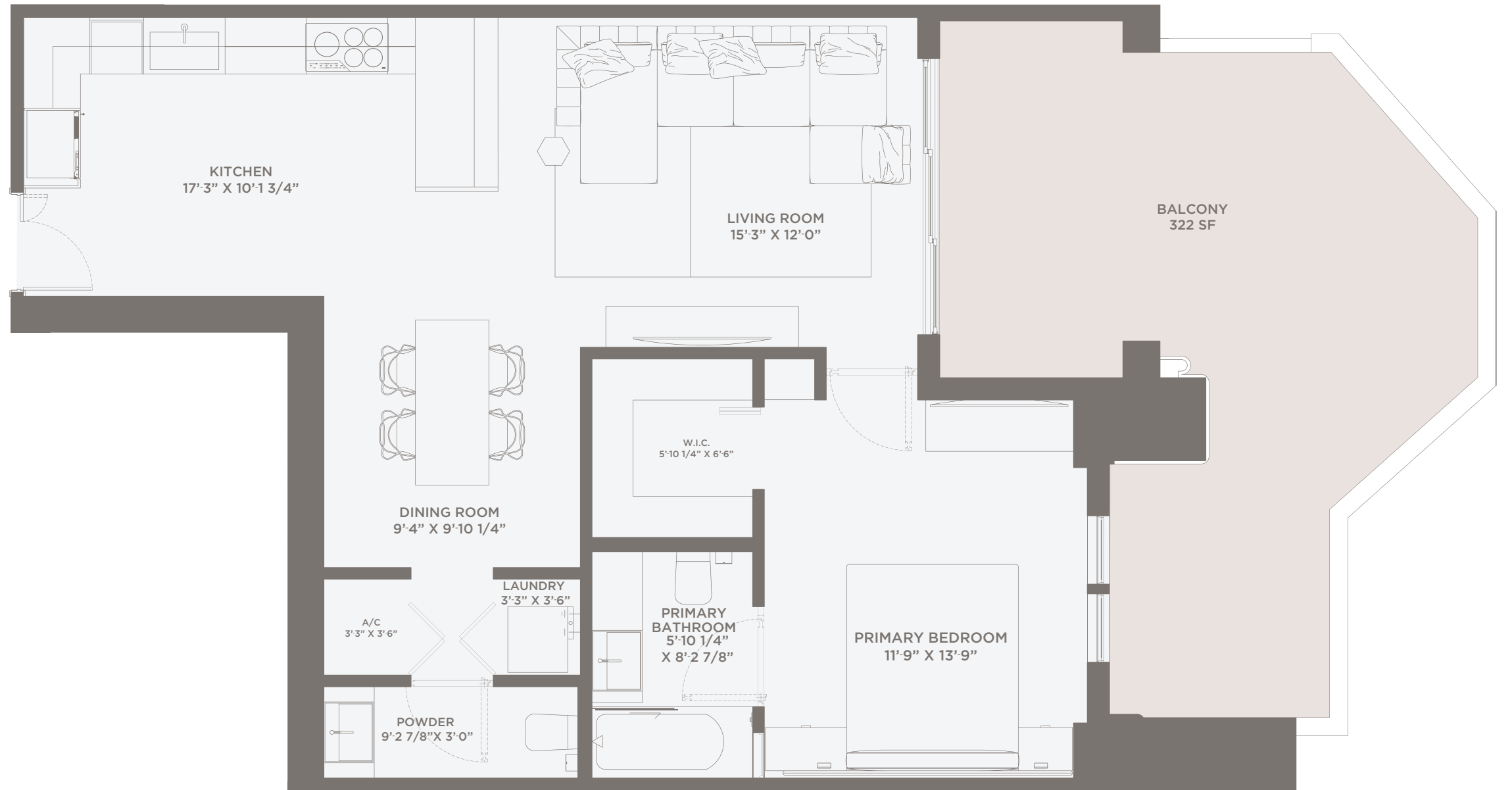
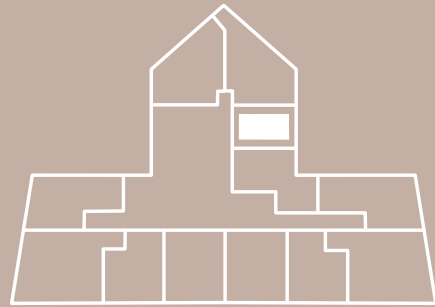
ALHAMBRA PARC

RESIDENCE 09

LEVEL 4

1 BED + 1.5 BATH
1 BALCONY

INTERIOR: 863 SQ. FT.
BALCONY: 322 SQ. FT.
TOTAL: 1,185 SQ. FT.



The drawings, specifications, dimensions and any other information in these floor plans are conceptual and for illustration purposes only and should not be relied upon. References should be made to the plans and specifications at Builder's office for accurate detailed information of the floor plans including calculation of square footage, dimensions, and other information.

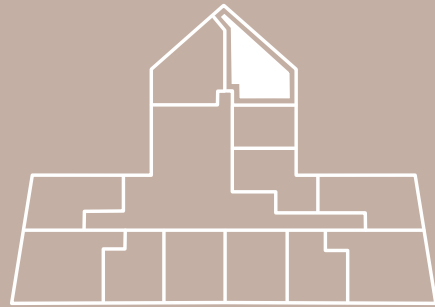


ALHAMBRA PARC

RESIDENCE 10 LEVEL 4

2 BED + 2.5 BATH
STUDIO/DEN
3 BALCONIES

INTERIOR: 1,925 SQ. FT.
BALCONY 1: 849 SQ. FT.
BALCONY 2: 118 SQ. FT.
BALCONY 3: 137 SQ. FT.
TOTAL: 3,029 SQ. FT.



The drawings, specifications, dimensions and any other information in these floor plans are conceptual and for illustration purposes only and should not be relied upon. References should be made to the plans and specifications at Builder's office for accurate detailed information of the floor plans including calculation of square footage, dimensions, and other information.



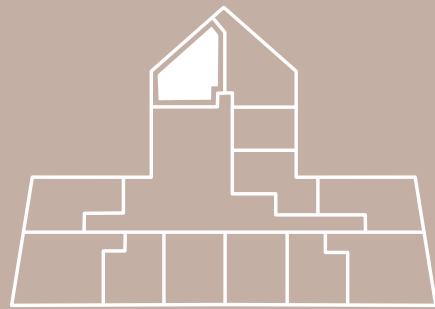


ALHAMBRA PARC

RESIDENCE 11 LEVEL 4

2 BED + 2.5 BATH
STUDIO/DEN
1 BALCONY

INTERIOR: 1,671 SQ. FT.
BALCONY 1: 941 SQ. FT.
TOTAL: 2,612 SQ. FT.



The drawings, specifications, dimensions and any other information in these floor plans are conceptual and for illustration purposes only and should not be relied upon. References should be made to the plans and specifications at Builder's office for accurate detailed information of the floor plans including calculation of square footage, dimensions, and other information.



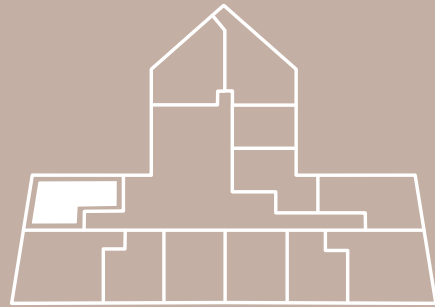


ALHAMBRA PARC

RESIDENCE 12 LEVEL 4

2 BED + 2.5 BATH
FAMILY ROOM
2 BALCONIES

INTERIOR: 1,859 SQ. FT.
BALCONY 1: 898 SQ. FT.
BALCONY 2: 369 SQ. FT.
TOTAL: 3,126 SQ. FT.



The drawings, specifications, dimensions and any other information in these floor plans are conceptual and for illustration purposes only and should not be relied upon. References should be made to the plans and specifications at Builder's office for accurate detailed information of the floor plans including calculation of square footage, dimensions, and other information.

