

**S**pectacular - Artistic Newly Built Home in one of Belmont's most desirable locations! Contemporary-Farmhouse vibe with incredible light, brilliant / charming finishes, a spacious open floorplan, distressed wood flooring, high ceilings, two skylights and more. The gourmet kitchen features quartz countertops, a large center island, commercial grade appliances, two skylights and amazing workspace for the aspiring at-home chef. All bathrooms offer beautiful hand-picked tile finishes and the master bathroom boasts a large pre-cast bathtub. Not easily found in Belmont, the rear yard is totally usable. Highlights include a sheltered / private stone patio and a large rolling lawn - perfect for play! The location is near perfect... Great Belmont schools, outstanding local shopping, a variety of transportation options and more - all close at hand!





Beautiful Belmont

1503 FOLGER DRIVE

## CONTEMPORARY FARMHOUSE VIBE

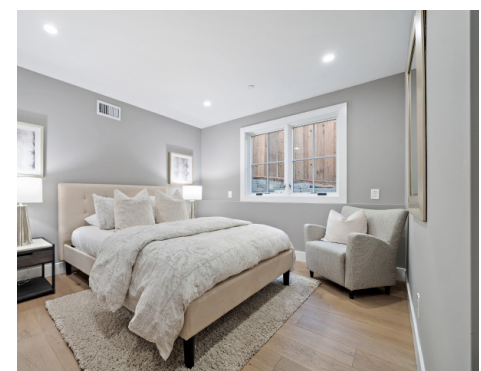
- Four perfectly sized bedrooms - featuring a gracious master suite “and” a separate ground floor bedroom with a full en-suite bathroom
- Three and one-half bathrooms - including two en-suite bathrooms and a powder room
- Inspired open concept floor plan – perfect for entertaining. Offering fantastic natural light, soaring raised ceilings and a long list of creative architectural features
- Gourmet kitchen – featuring pearl white quartz counters, a large center island, commercial grade stainless appliances, two skylights and amazing work space for the aspiring at-home chef
- Wonderful rear yard space including a nearly level rolling lawn area, a large paver stone patio, incredible privacy and plenty of room for the gardening enthusiast
- Total curb appeal with an artistic stacked stone tile entrance and a Contemporary Farm House vibe
- Other features of note include: distressed wood flooring, a trendy metal roof, hand-picked bathroom tile, a stacked stone fireplace in the family room and central air conditioning
- Remarkable Belmont setting... Located just moments from every imaginable convenience.... Great local schools, hiking trails, Twin Pines Park, shopping, transportation and so much more – all close at hand



**Stephan Marshall**  
REALTOR®  
650-455-1528  
Stephan@stephanmarshall.com  
StephanMarshall.com  
DRE#01487186



Compass is a real estate broker licensed by the State of California and abides by Equal Housing Opportunity laws. License Number 01866771. All material presented herein is intended for informational purposes only and is compiled from sources deemed reliable but has not been verified. Changes in price, condition, sale or withdrawal may be made without notice. No statement is made as to accuracy of any description. All measurements and square footage are approximate.



## AT A GLANCE

4 BEDS  
3.5 BATHS  
2484 SQFT +/-  
8588 SQFT LOT  
\$2,698,000

[WWW.1503FOLGER.COM](http://WWW.1503FOLGER.COM)

1503 FOLGER DRIVE BELMONT