



WESTMORE PLACE

"Where home means...MORE"

2925 Westsyde Road





WESTMORE PLACE

"Where home means...MORE"

2925 Westsyde Road





WESTMORE PLACE

"Where home means...MORE"

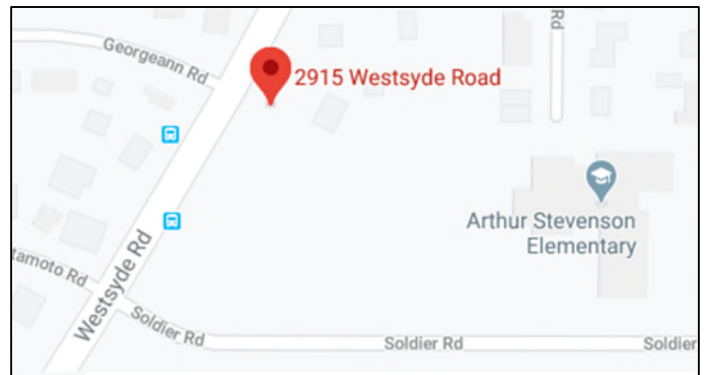
Development

- Ground-level and Upper Level units available
- Designed to be "Move-In Ready"
- Appliance package included
- A/C and window coverings Included
- Two interior colour packages to choose from



Community

- Located on the west bank of the North Thompson River
- Close proximity to Elementary and Secondary Schools
- Shopping and Restaurants nearby
- Nearby amenities include: Westsyde pool, The Dunes Golf Course – 5 minute away, Lac Du Bois Grasslands, Shopping Center
- 35 minutes to Sun Peaks Ski Resort
- 15 minute drive to Thompson Rivers University



Another quality project by Blackoak Developments...

Since its inception, Blackoak Developments has had one mission: to build structures that have enduring value and the potential to become timeless in the community.

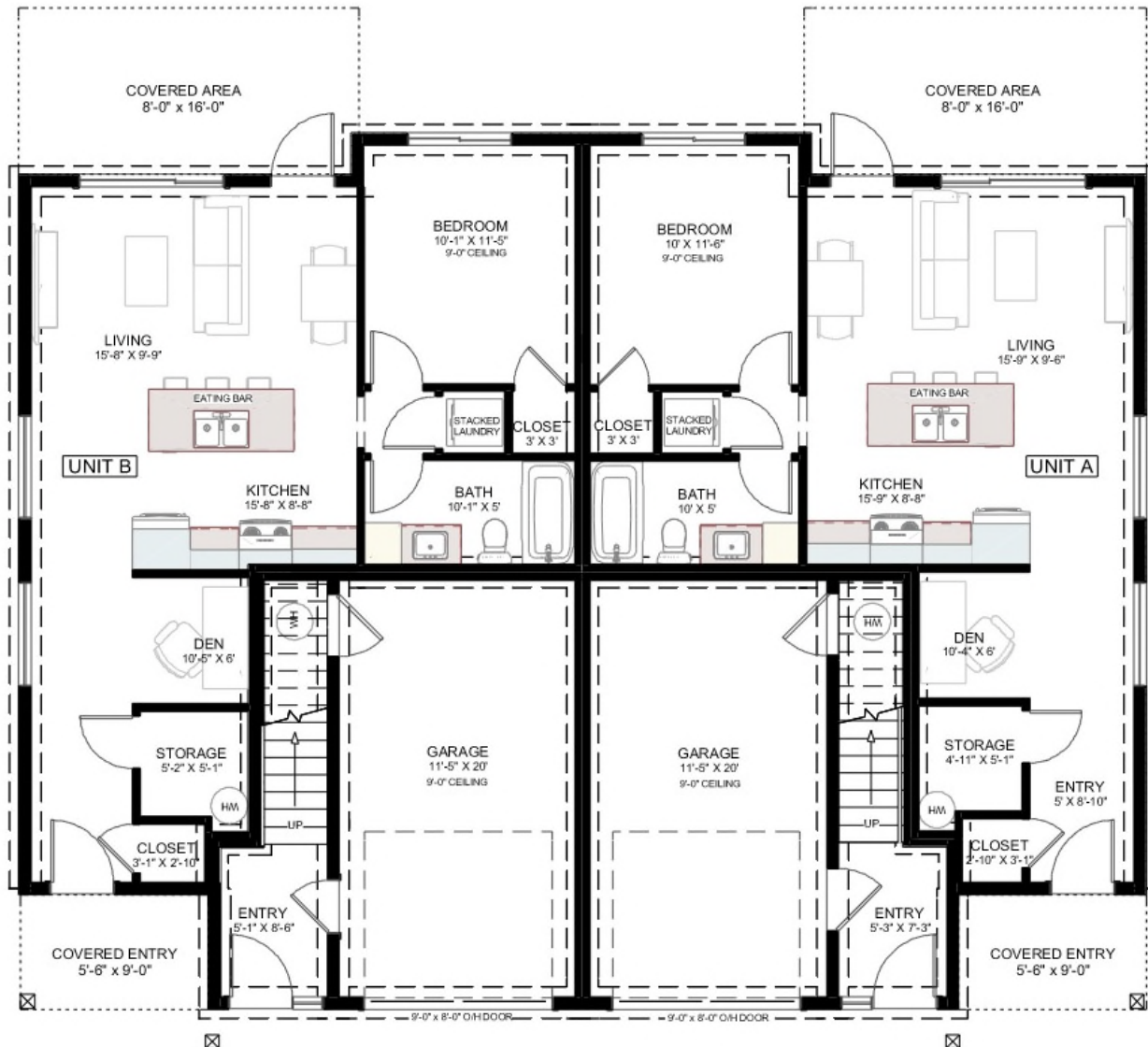
With over 20 years of combined experience in property development in the interior of B.C., the team is skilled at working with customers to ensure their needs are being met at every stage of the development cycle. Our project management ensures consistent communication and updates that foster a partnership through the entire building process. We take a lot of pride in crafting quality homes that current and future generations will make their own dreams come true in.





WESTMORE PLACE

"Where home means...MORE"



GROUND LEVEL FLOOR PLANS

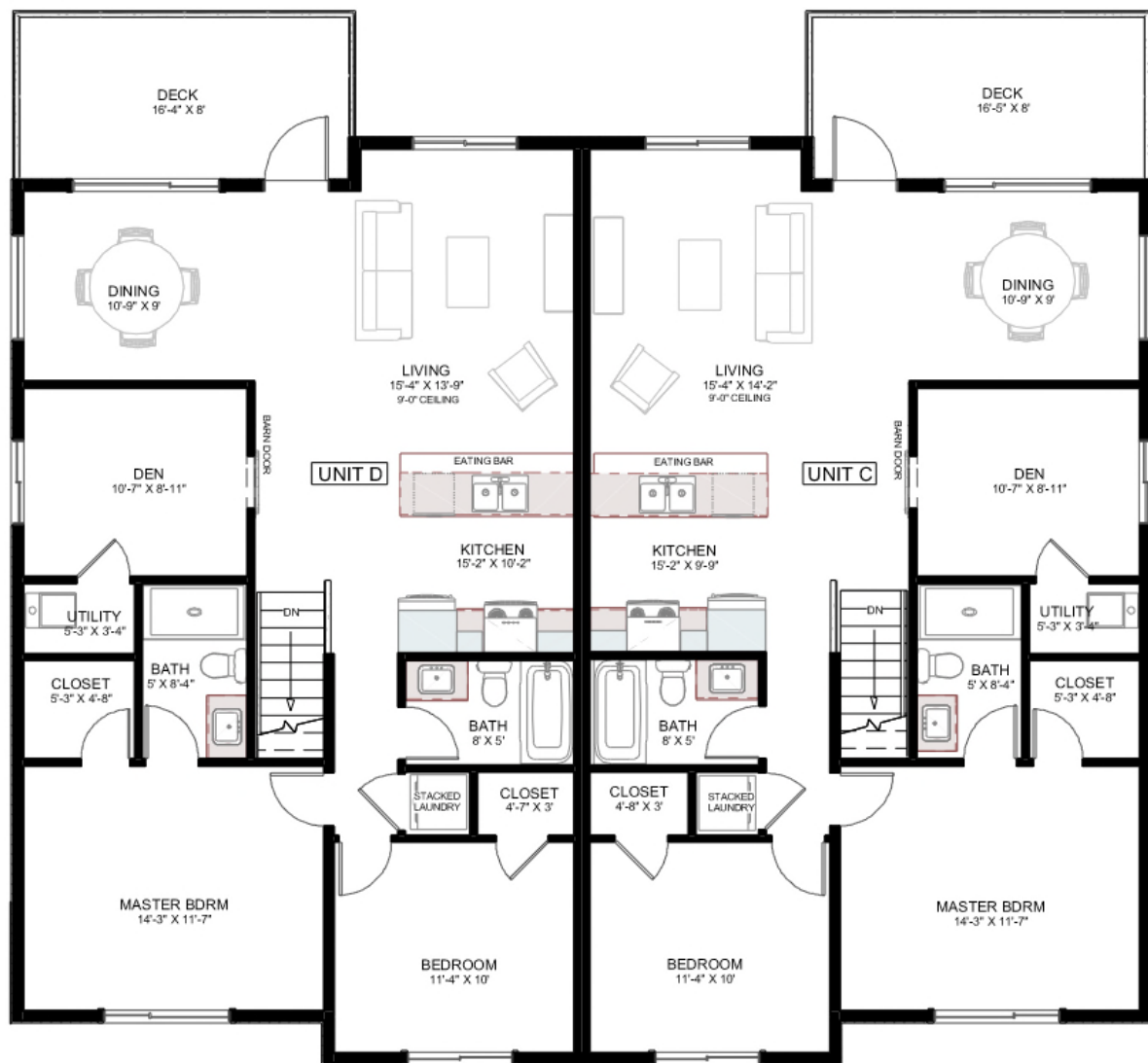
Finished Floor Area: 700 SQFT

N.T.S.



WESTMORE PLACE

"Where home means...MORE"



UPPER LEVEL FLOOR PLANS

Finished Floor Area: 1,100 SQFT

Garage/Storage: 230 SQFT

N.T.S.

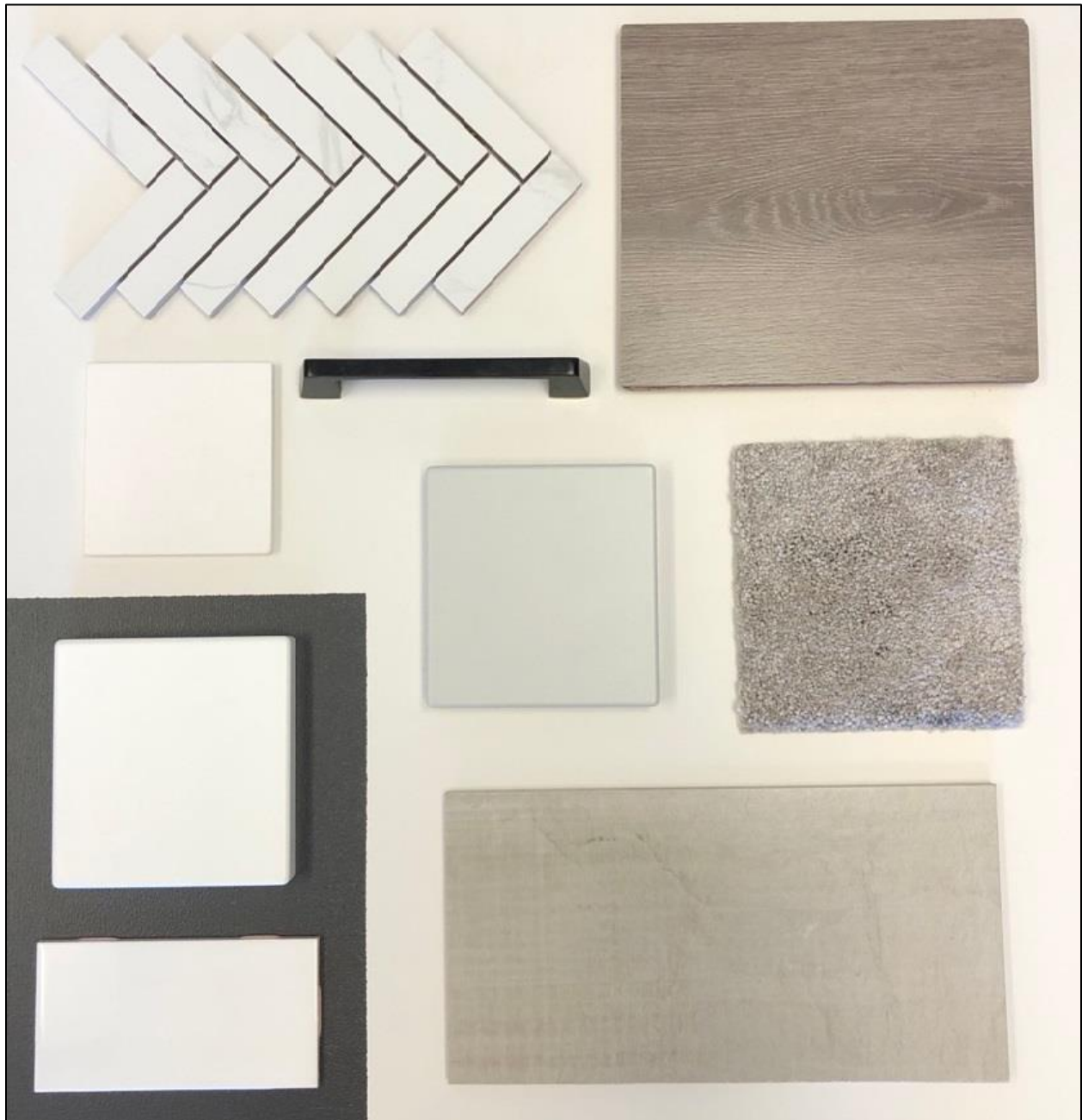


WESTMORE PLACE

"Where home means...MORE"

Interior Colour Option:

"A"





WESTMORE PLACE

"Where home means...MORE"

Interior Colour Option:

"B"





WESTMORE PLACE

"Where home means...MORE"

INCLUDED WHIRLPOOL STAINLESS STEEL PACKAGE

Upgrading is available. Buyer must consult with **City Furniture to ensure all appliances fit into the designated spots**





WESTMORE PLACE

"Where home means...MORE"





WESTMORE PLACE

"Where home means...MORE"

Westmore Place is a 20-unit development that incorporates state of the art design with energy-efficient materials to meet the needs of a 21st-century home. Stunning views of the surrounding grasslands accompanied by the friendly community spirit, makes Westmore Place the perfect place to call home.

Unit #	Upper/ Ground	SQFT	Feature	Status/ Price	Strata Fees
101	Ground	700	Level Entry	\$229,900	\$122.81
102	Upper	1100	Garage	\$359,900	\$210.53
103	Upper	1100	Garage	\$374,900	\$210.53
104	Ground	700	Level Entry	\$239,900	\$122.81
105	Ground	700	Level Entry	\$249,900	\$122.81
106	Upper	1100	Garage	\$384,900	\$210.53
107	Upper	1100	Garage	\$389,900	\$210.53
108	Ground	700	Level Entry	\$254,900	\$122.81
109	Ground	700	Level Entry	\$259,900	\$122.81
110	Upper	1100	Garage	\$392,900	\$210.53
111	Upper	1100	Garage	\$394,900	\$210.53
112	Ground	700	Level Entry	SOLD	\$122.81
113	Ground	700	Level Entry	PENDING	\$122.81
114	Upper	1100	Garage	\$379,900	\$210.53
115	Upper	1100	Garage	\$374,900	\$210.53
116	Ground	700	Level Entry	\$244,900	\$122.81
117	Ground	700	Level Entry	\$234,900	\$122.81
118	Upper	1100	Garage	\$364,900	\$210.53
119	Upper	1100	Garage	\$349,900	\$210.53
120	Ground	700	Level Entry	SOLD	\$122.81

*Garage Feature = 230 SQFT