

Expansions and Options:

1. Expansions: _____ Sq. Ft.*

- a. Sunrooms _____ 139
- b. Screened Porch _____ 139
- c. Basement (finished/unfinished)
 - Walkout _____ 1,742
 - Daylight _____ 1,742
- d. Second floor _____ 673
 - Stair and loft
 - Stair and loft with storage
 - Stair and loft with bathroom
 - Stair and loft with bathroom and bedroom with large walk-in closet
 - Stair two bedrooms with closets and bath
- e. Master suite bump out _____ 60
- f. Den _____ 120

2. Custom Home Expansions

- Interior designs
 - By owner on fee basis _____ TBD
- Window Seats
- Skylights

3. Deck/Patio Options - site specific

- a. Brick _____ 139
- b. Pressure Treated _____ 139
- c. Cedar _____ 139

4. Kitchen/Bathrooms

- a. Custom counter tops
- b. Custom cabinets

5. Fireplace

- a. Gas with glass doors (hearth optional)
- b. Gas woodstove w/hearth
- c. Brick or Stone

6. Trim

- a. Chair rail
- b. Molding package upgrade

7. Casework and Built-ins

- Custom designed
- By owner on fee basis _____ TBD

8. Ceilings

- a. Living room with crown molding
- b. Bedroom with crown molding
- c. Tray

9. Flooring

- Tile or hardwood

10. Residential elevator

Electrical up-grades:

- 200 amperes service (100 std.)
- Additional cable TV outlet
- Additional floor receptacle
- Additional GFIC outlets
- Additional keyless fixture in garage
- Additional outlet
- Additional phone jack and wiring
- Additional single pole switch
- Additional smoke detector
- Closet light
- Dedicated circuit for air conditioner
- Dedicated circuit for compactor
- Dedicated circuit for freezer
- Dedicated circuit for microwave
- Exterior flood light fixture
- Generator
- Motion sensor for floodlights

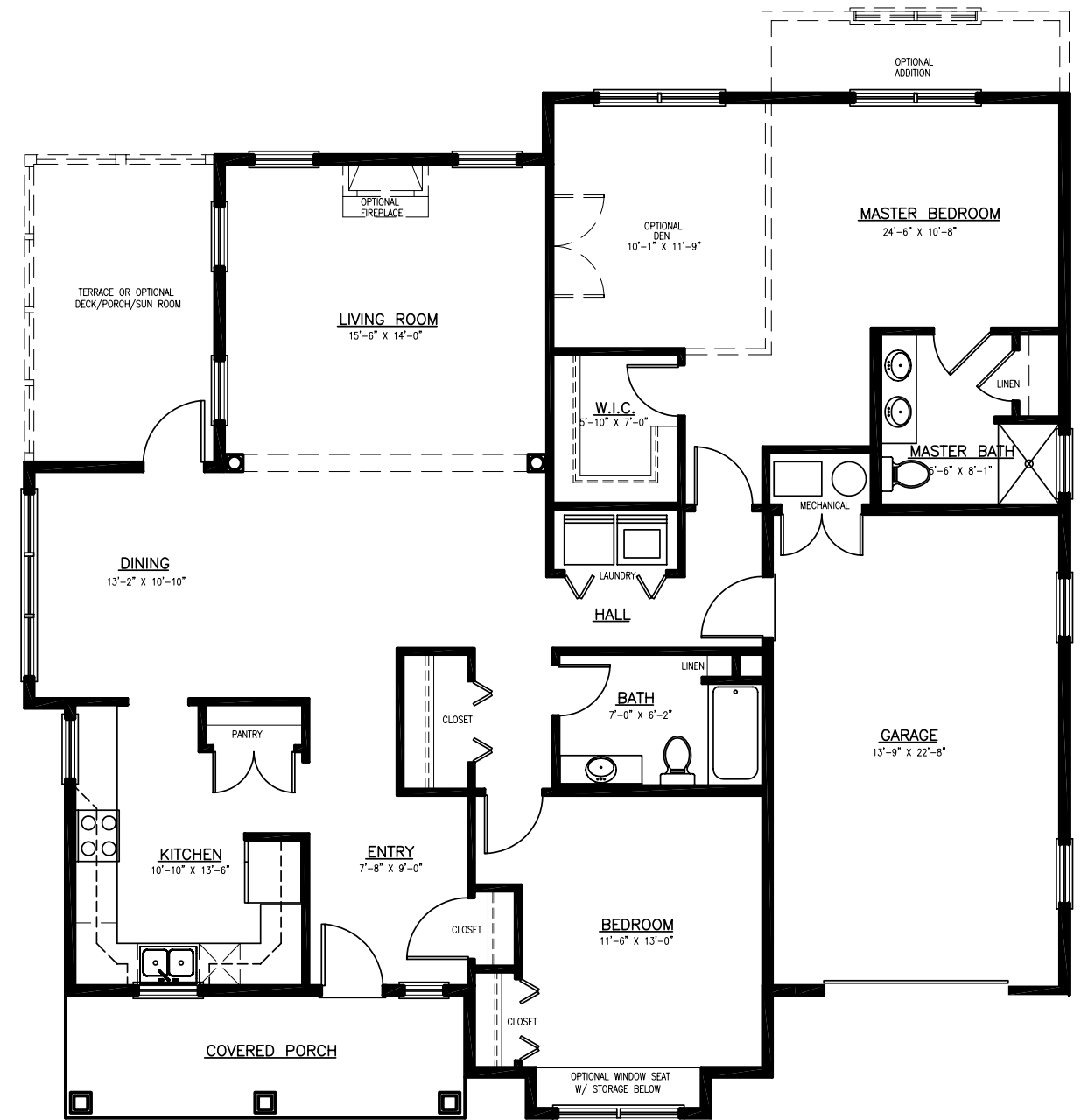
Electrical up-grades (cont'd):

- Nutone heat/vent/light unit
- Recessed down light
- Recessed eyeball down light
- Single pole dimmer
- Surge protector for entire home
- Three-way dimmer
- Wiring for paddle fan
- Wiring for three-way switch
- Wiring for wall sconce

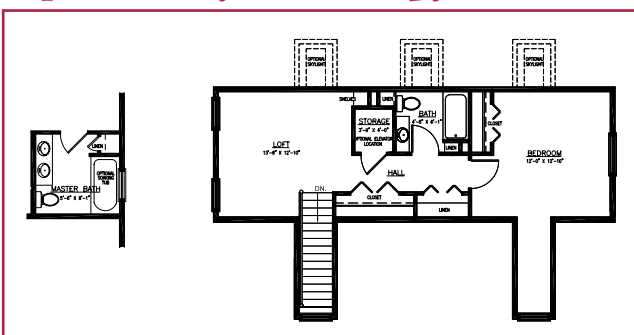
HVAC up-grades

- 2nd lavatory in bathroom
- Additional heat zone for 2nd bedroom
- Additional heat zone for sunroom
- Basement full bath
- Basement half bath
- Central air
- Central vacuum
- Gas line to other appliance
- Grab bars
- Heat in basement
- Heat in garage
- Radiant heat
- Ice maker connection
- Service sink
- Set back thermostats
- Sewer lift pump for basement bath
- Soaking tub
- Sprinkler system
- Whirlpool tub

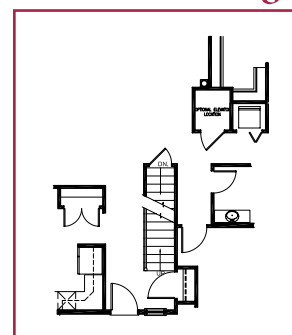
Denmar Cottage - Single



Optional 2nd floor - 673 sq. ft.*!



1st floor w/ staircase redesign



Atlantic Heights
THE COTTAGE HOMES

One Harbor Drive
Saco, Maine 04072

800-874-6990 207-283-3022
www.AtlanticHeightsMaine.com



Atlantic Heights
THE COTTAGE HOMES

1,739 square feet* of living area!

Our Denmar residence is the largest of our cottages to choose from. Each home has been designed with the utmost attention to detail and the highest quality building materials. The single floor plans have a living area of 1,739 square feet.* All homes have ample storage capacity with an attached garage. Cable TV, internet, phone and all power lines are provided in-ground throughout the community. And of course, every homeowner has priority access to full comprehensive Atlantic Heights' healthcare services.

*All square footage estimates based on architectural drawings.

*All square footage estimates based on architectural drawings and do not include porches or garage.

Denmar Cottage - Duplex



1,739 square feet* of living area!

In addition to single homes, The Denmar duplex cottages are also available with the same living area of 1,739 square feet.* All duplexes are designed with no more than one shared common wall. Again, both residences are two-story with the option to finish now or leave as a storage area. All second floors are designed at the outset with a choice of a full bath, whether finished now or at a later date.**

Select Cottages Available with Daylight or Walkout Basements!

Optional Amenities list:

- Finished or unfinished second floor, (673 square feet.*)
- Daylight or Walk-out basement
- Wood or gas fireplace
- Open or enclosed seasonal porch
- Emergency security system
- Kitchen cabinet finish selection
- Kitchen & bathroom fixture selection
- Choose from carpet, tile or hardwood flooring
- Second floor elevator



*All square footage estimates based on architectural drawings. **This applies to all single units as well as double.