

RESIDENCE FEATURES

- Private high-speed elevator access
- Breathtaking Atlantic Ocean and city views through floor-to-ceiling windows
- Eight-foot-high double-door entry to a spacious foyer
- Spacious interior floor plans with elegant smooth-finish ceilings rising to 10 feet (slab to slab, except where required to accommodate mechanical equipment)
- Expansive 10-foot-deep private balconies with glass railings
- Summer kitchen with under-counter Sub-Zero refrigerator
- Recessed lighting in select corridors and bathrooms
- Intelligent climate controls with digital thermostats
- Large capacity full size washer/dryer
- Smart building technology provides seamless access to select building amenities
- Pre-wired for audio speakers as well as motorized drapes and programmed lighting controls in select locations

SLEEK KITCHEN

- Armani Dada designed and fabricated cabinerty
- Elegant imported stone countertops and glass backsplashes
- Sub-Zero refrigerator, freezer and wine cooler
- State-of-the-art Wolf appliances

IMPECCABLE MASTER SUITE

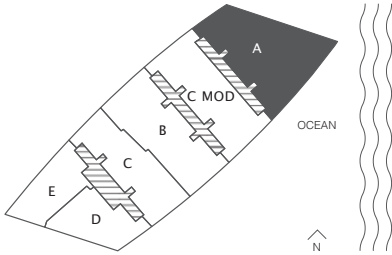
- Armani Dada designed and fabricated midnight bar containing subzero refrigerator, marble counter top and sink
- His and hers bathrooms
- Armani Roca designed sinks and faucets
- Spa-inspired shower with Armani Roca wall-mounted handheld spray and large rainshower
- High-performance Toto Neorest toilet with integrated bidet technology


FINE POWDER ROOMS AND GUEST BATHROOMS

- Armani Roca sinks, faucets and Toto toilet in power room
- Marble stone floors and baseboards
- Fully stone cladded vanity with stone countertop

RESIDENCE A (3RD FLOOR)  
4 BEDROOMS + SERVICE / 5.5 BATHS

A/C INTERIOR AREA	3,640 SQ. FT.	338.17 SQ. M.
TERRACE AREA	1,328 SQ. FT.	123.37 SQ. M.
TOTAL RESIDENCE	4,968 SQ. FT.	461.54 SQ. M.



 Depending on the method of calculation, the quoted square footage of any Unit may vary. The dimensions in the Unit shown in these floor plans have been calculated from the exterior boundaries of the exterior walls to the centerline of interior demising walls, including common elements such as structural walls and other interior structural components of the building and are greater than the dimensions that would be determined by using the description and definition of the "Unit" set forth in the Prospectus and the Declaration. The measurements of a room set forth on this floor plan are generally taken at the greatest points of each given room (as if the room were a perfect rectangle) without regard for any cutouts. Accordingly, the area of the actual room will typically smaller than the product obtained by multiplying the stated length by the stated width. All dimensions are approximate and may vary with actual construction and may change prior to completion. Any and all furnishings, finishes, or décor illustrated are not included with the purchase of the Unit. The layout, including the location of closets, doors, baths, appliances, plumbing fixtures, and entries may vary with actual construction. Consult the Prospectus for information regarding what is offered with the Unit and for the calculation of the Unit square footage and dimensions.

RESIDENCE FEATURES

- Private high-speed elevator access
- Breathtaking Atlantic Ocean and city views through floor-to-ceiling windows
- Eight-foot-high double-door entry to a spacious foyer
- Spacious interior floor plans with elegant smooth-finish ceilings rising to 10 feet (slab to slab, except where required to accommodate mechanical equipment)
- Expansive 10-foot-deep private balconies with glass railings
- Summer kitchen with under-counter Sub-Zero refrigerator
- Recessed lighting in select corridors and bathrooms
- Intelligent climate controls with digital thermostats
- Large capacity full size washer/dryer
- Smart building technology provides seamless access to select building amenities
- Pre-wired for audio speakers as well as motorized drapes and programmed lighting controls in select locations

SLEEK KITCHEN

- Armani Dada designed and fabricated cabinerty
- Elegant imported stone countertops and glass backsplashes
- Sub-Zero refrigerator, freezer and wine cooler
- State-of-the-art Wolf appliances

IMPECCABLE MASTER SUITE

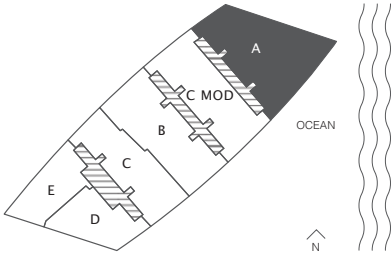
- Armani Dada designed and fabricated midnight bar containing subzero refrigerator, marble counter top and sink
- His and hers bathrooms
- Armani Roca designed sinks and faucets
- Spa-inspired shower with Armani Roca wall-mounted handheld spray and large rainshower
- High-performance Toto Neorest toilet with integrated bidet technology

FINE POWDER ROOMS AND GUEST BATHROOMS

- Armani Roca sinks, faucets and Toto toilet in power room
- Marble stone floors and baseboards
- Fully stone cladded vanity with stone countertop

RESIDENCE A (28TH FLOOR)  
4 BEDROOMS + SERVICE / 5.5 BATHS

A/C INTERIOR AREA	3,891 SQ. FT.	361.48 SQ. M.
TERRACE AREA	1,244 SQ. FT.	115.57 SQ. M.
TOTAL RESIDENCE	5,135 SQ. FT.	477.05 SQ. M.

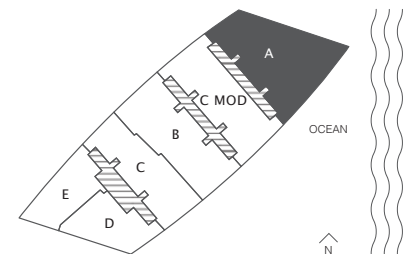


- Private high-speed elevator access
- Breathtaking Atlantic Ocean and city views through floor-to-ceiling windows
- Eight-foot-high double-door entry to a spacious foyer
- Spacious interior floor plans with elegant smooth-finish ceilings rising to 10 feet (slab to slab, except where required to accommodate mechanical equipment)
- Expansive 10-foot-deep private balconies with glass railings
- Summer kitchen with under-counter Sub-Zero refrigerator
- Recessed lighting in select corridors and bathrooms
- Intelligent climate controls with digital thermostats
- Large capacity full size washer/dryer
- Smart building technology provides seamless access to select building amenities
- Pre-wired for audio speakers as well as motorized drapes and programmed lighting controls in select locations

- Armani Dada designed and fabricated cabinetry
- Elegant imported stone countertops and glass backsplashes
- Sub-Zero refrigerator, freezer and wine cooler
- State-of-the-art Wolf appliances

- Armani Dada designed and fabricated midnight bar containing subzero refrigerator, marble counter top and sink
- His and hers bathrooms
- Armani Roca designed sinks and faucets
- Spa-inspired shower with Armani Roca wall-mounted handheld spray and large rainshower
- High-performance Toto Neorest toilet with integrated bidet technology

- Armani Roca sinks, faucets and Toto toilet in power room
- Marble stone floors and baseboards
- Fully stone clad vanity with stone countertop



A/C INTERIOR AREA	4,150 SQ. FT.	385.54 SQ. M.
TERRACE AREA	1,560 SQ. FT.	144.92 SQ. M.
TOTAL RESIDENCE	5,710 SQ. FT.	530.47 SQ. M.

RESIDENCE FEATURES

- Private high-speed elevator access
- Breathtaking Atlantic Ocean and city views through floor-to-ceiling windows
- Eight-foot-high double-door entry to a spacious foyer
- Spacious interior floor plans with elegant smooth-finish ceilings rising to 10 feet (slab to slab, except where required to accommodate mechanical equipment)
- Expansive 10-foot-deep private balconies with glass railings
- Summer kitchen with under-counter Sub-Zero refrigerator
- Recessed lighting in select corridors and bathrooms
- Intelligent climate controls with digital thermostats
- Large capacity full size washer/dryer
- Smart building technology provides seamless access to select building amenities
- Pre-wired for audio speakers as well as motorized drapes and programmed lighting controls in select locations

SLEEK KITCHEN

- Armani Dada designed and fabricated cabinerty
- Elegant imported stone countertops and glass backsplashes
- Sub-Zero refrigerator / freezer and wine cooler
- State-of-the-art Wolf appliances

IMPECCABLE MASTER SUITE

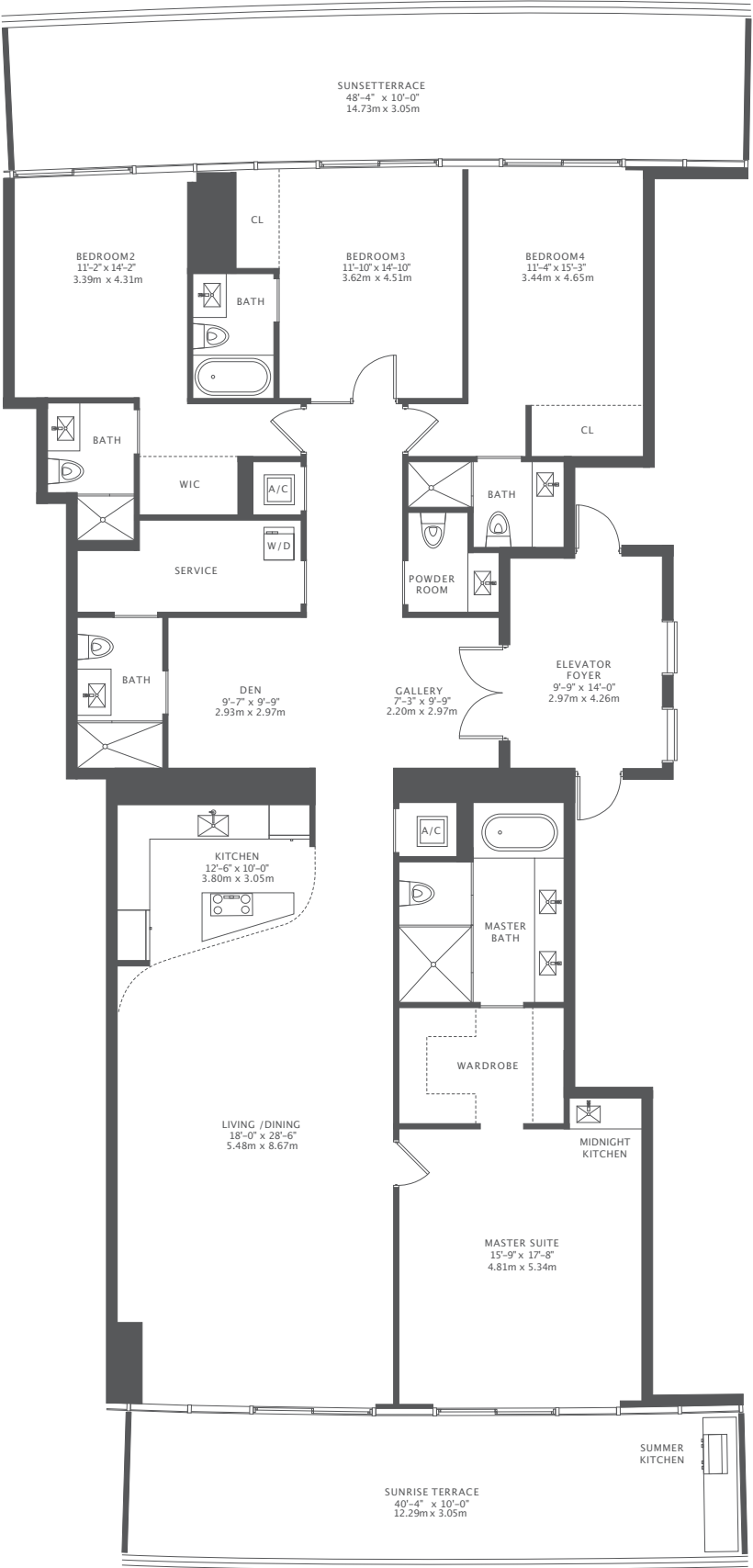
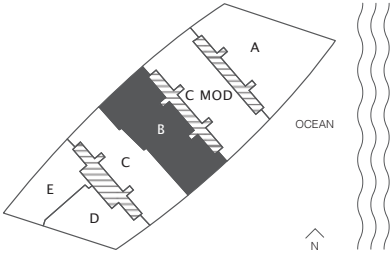
- Armani Dada designed and fabricated midnight bar containing subzero refrigerator, marble counter top and sink
- Armani Roca designed sinks and faucets
- Spa-inspired shower with Armani Roca wall-mounted handheld spray and large rainshower
- High-performance Toto Neorest toilet with integrated bidet technology

FINE POWDER ROOMS AND GUEST BATHROOMS

- Armani Roca sinks, faucets and Toto toilet in powder room
- Marble stone floors and baseboards
- Fully stone cladded vanity with stone countertop

RESIDENCE B  
4 BEDROOMS + DEN + SERVICE / 5.5 BATHS

A/C INTERIOR AREA	3,176 SQ. FT.	295.06 SQ. M.
TERRACE AREA	886 SQ. FT.	82.31 SQ. M.
TOTAL RESIDENCE	4,062 SQ. FT.	377.37 SQ. M.



RESIDENCE FEATURES

- Private high-speed elevator access
- Breathtaking Atlantic Ocean and city views through floor-to-ceiling windows
- Eight-foot-high double-door entry to a spacious foyer
- Spacious interior floor plans with elegant smooth-finish ceilings rising to 10 feet (slab to slab, except where required to accommodate mechanical equipment)
- Expansive 10-foot-deep private balconies with glass railings
- Summer kitchen with under-counter Sub-Zero refrigerator
- Recessed lighting in select corridors and bathrooms
- Intelligent climate controls with digital thermostats
- Large capacity full size washer/dryer
- Smart building technology provides seamless access to select building amenities
- Pre-wired for audio speakers as well as motorized drapes and programmed lighting controls in select locations

SLEEK KITCHEN

- Armani Dada designed and fabricated cabinerty
- Elegant imported stone countertops and glass backsplashes
- Sub-Zero refrigerator / freezer and wine cooler
- State-of-the-art Wolf appliances

IMPECCABLE MASTER SUITE

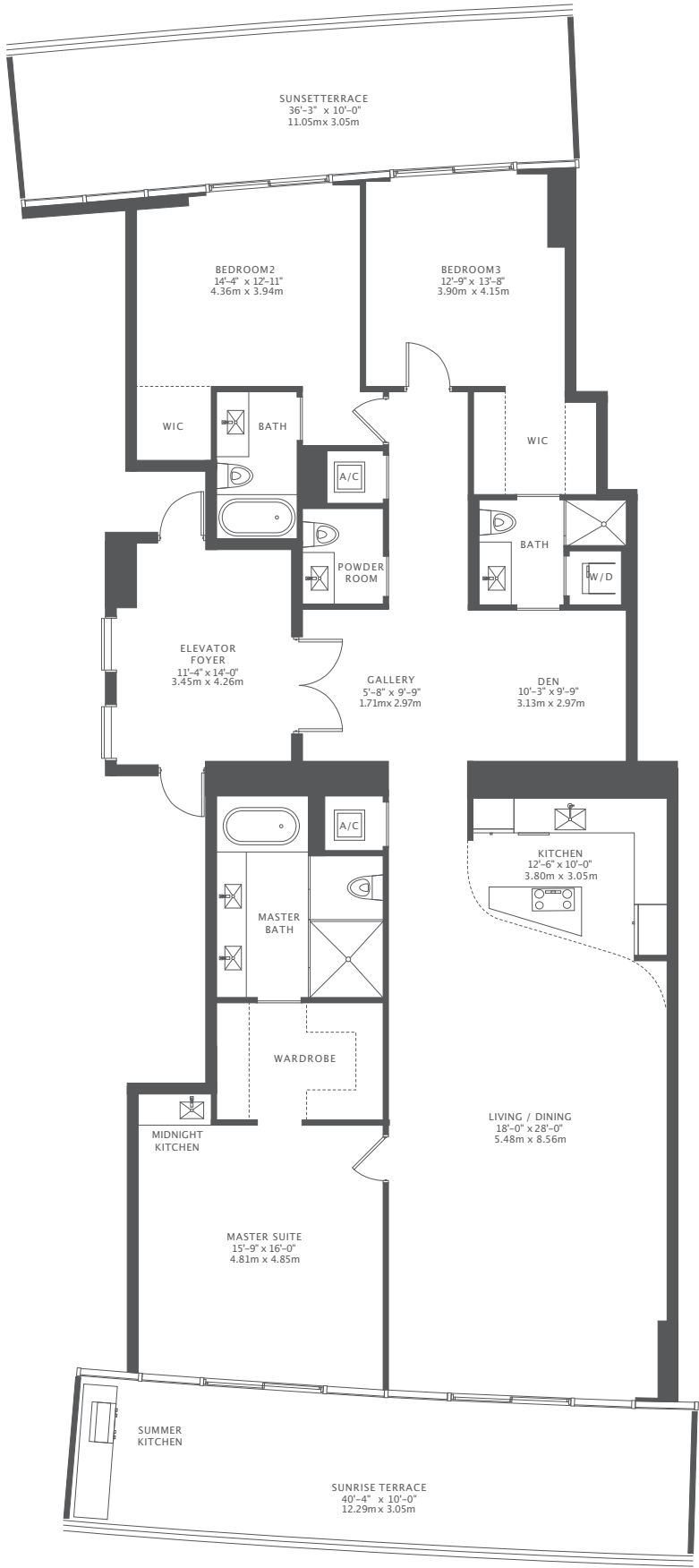
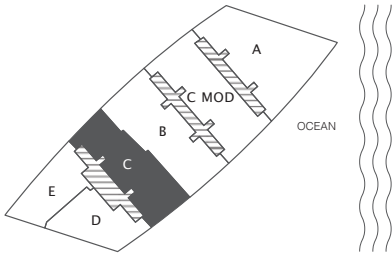
- Armani Dada designed and fabricated midnight bar containing subzero refrigerator, marble counter top and sink
- Armani Roca designed sinks and faucets
- Spa-inspired shower with Armani Roca wall-mounted handheld spray and large rainshower
- High-performance Toto Neorest toilet with integrated bidet technology

FINE POWDER ROOMS AND GUEST BATHROOMS

- Armani Roca sinks, faucets and Toto toilet in powder room
- Marble stone floors and baseboards
- Fully stone cladded vanity with stone countertop

RESIDENCE C  
3 BEDROOMS + DEN / 3.5 BATHS

A/C INTERIOR AREA	2,716 SQ. FT.	252.32 SQ. M.
TERRACE AREA	765 SQ. FT.	71.07 SQ. M.
TOTAL RESIDENCE	3,481 SQ. FT.	323.40 SQ. M.



RESIDENCE FEATURES

- Private high-speed elevator access
- Breathtaking Atlantic Ocean and city views through floor-to-ceiling windows
- Eight-foot-high double-door entry to a spacious foyer
- Spacious interior floor plans with elegant smooth-finish ceilings rising to 10 feet (slab to slab, except where required to accommodate mechanical equipment)
- Expansive 10-foot-deep private balconies with glass railings
- Summer kitchen with under-counter Sub-Zero refrigerator
- Recessed lighting in select corridors and bathrooms
- Intelligent climate controls with digital thermostats
- Large capacity full size washer/dryer
- Smart building technology provides seamless access to select building amenities
- Pre-wired for audio speakers as well as motorized drapes and programmed lighting controls in select locations

SLEEK KITCHEN

- Armani Dada designed and fabricated cabinerty
- Elegant imported stone countertops and glass backsplashes
- Sub-Zero refrigerator / freezer and wine cooler
- State-of-the-art Wolf appliances

IMPECCABLE MASTER SUITE

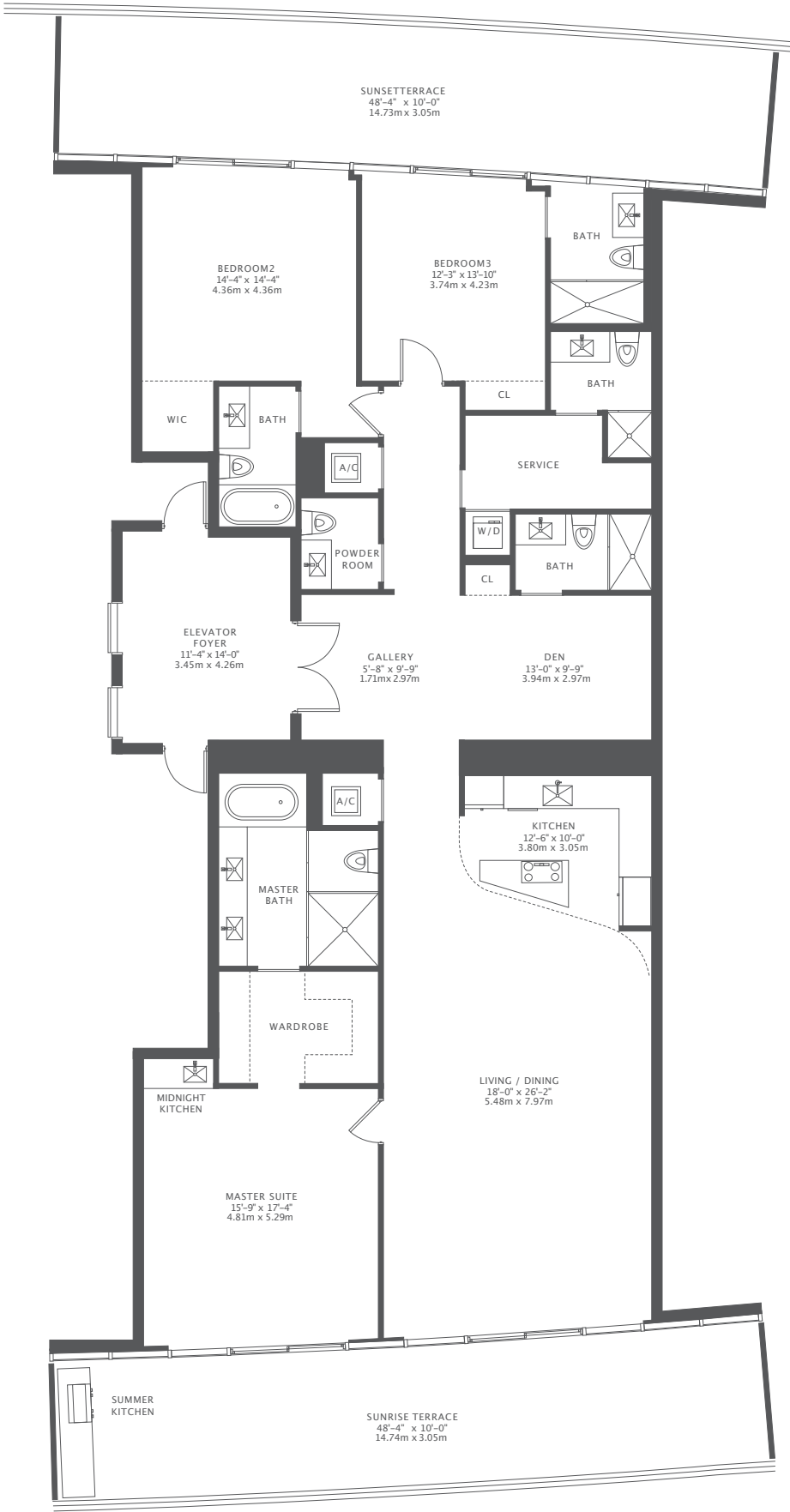
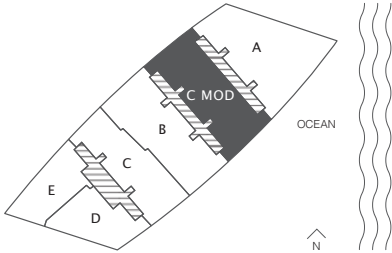
- Armani Dada designed and fabricated midnight bar containing subzero refrigerator, marble counter top and sink
- Armani Roca designed sinks and faucets
- Spa-inspired shower with Armani Roca wall-mounted handheld spray and large rainshower
- High-performance Toto Neorest toilet with integrated bidet technology

FINE POWDER ROOMS AND GUEST BATHROOMS

- Armani Roca sinks, faucets and Toto toilet in powder room
- Marble stone floors and baseboards
- Fully stone cladded vanity with stone countertop

RESIDENCE C MOD  
3 BEDROOMS + DEN + SERVICE / 5.5 BATHS

A/C INTERIOR AREA	3,050 SQ. FT.	283.35 SQ. M.
TERRACE AREA	969 SQ. FT.	90.02 SQ. M.
TOTAL RESIDENCE	4,019 SQ. FT.	373.37 SQ. M.





RESIDENCE FEATURES

- High-speed elevator access
- Breathtaking Atlantic Ocean and city views through floor-to-ceiling windows
- Spacious interior floor plans with elegant smooth-finish ceilings rising to 10 feet (slab to slab, except where required to accommodate mechanical equipment)
- Expansive 10-foot-deep private balconies with glass railings
- Summer kitchen with under-counter Sub-Zero refrigerator
- Recessed lighting in select corridors and bathrooms
- Intelligent climate controls with digital thermostats
- Large capacity full size washer/dryer
- Smart building technology provides seamless access to select building amenities
- Pre-wired for audio speakers as well as motorized drapes and programmed lighting controls in select locations

SLEEK KITCHEN

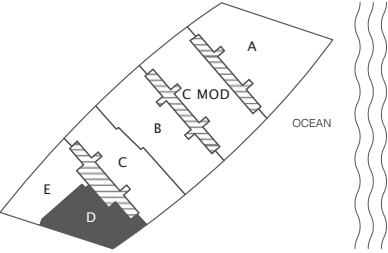
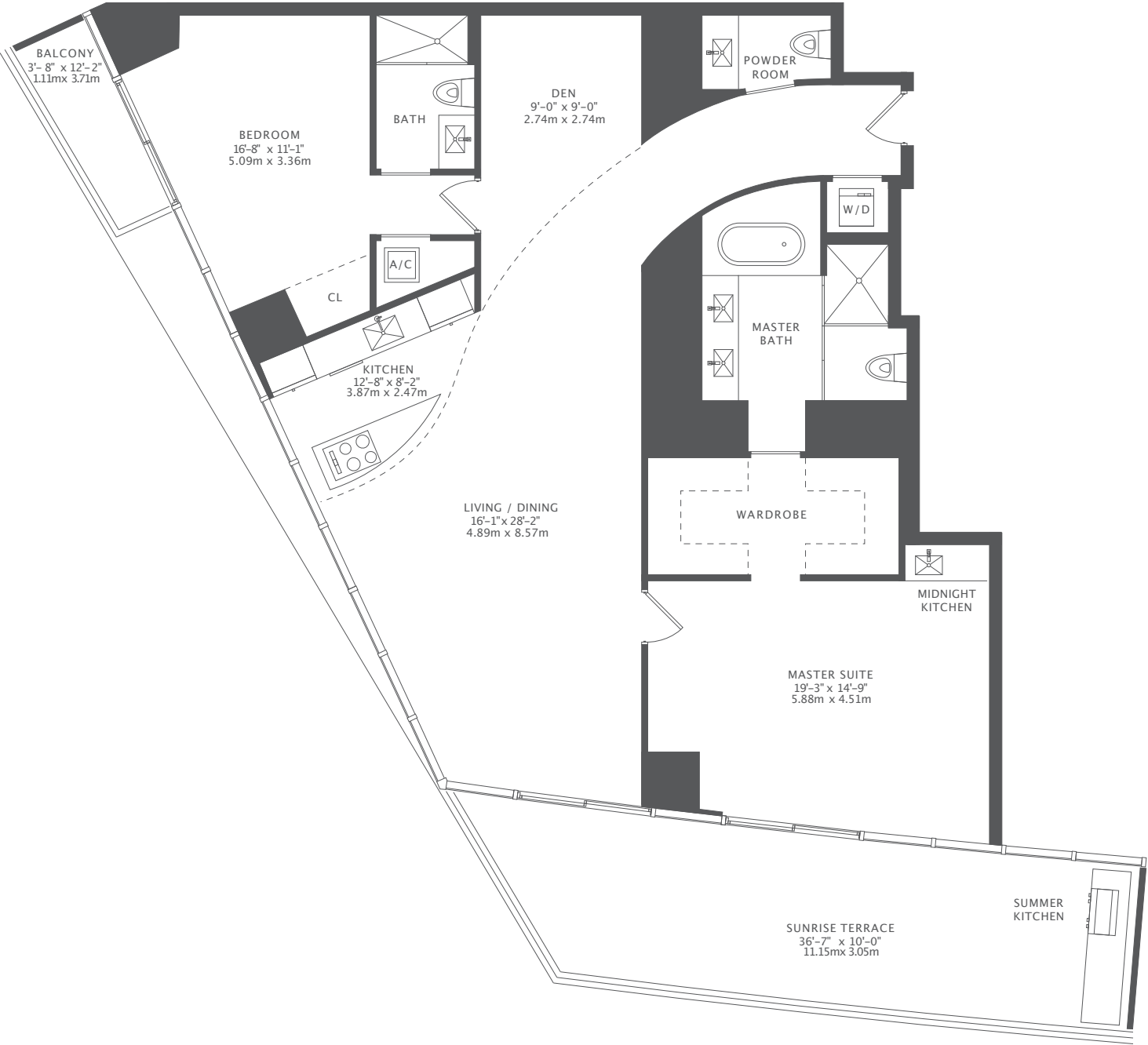
- Armani Dada designed and fabricated cabinerty
- Elegant imported stone countertops and glass backsplashes
- Sub-Zero refrigerator / freezer and wine cooler
- State-of-the-art Wolf appliances

IMPECCABLE MASTER SUITE

- Armani Dada designed and fabricated midnight bar containing subzero refrigerator, marble counter top and sink
- Armani Roca designed sinks and faucets
- Spa-inspired shower with Armani Roca wall-mounted handheld spray and large rainshower
- High-performance Toto Neorest toilet with integrated bidet technology

FINE POWDER ROOMS AND GUEST BATHROOMS

- Armani Roca sinks, faucets and Toto toilet in powder room
- Marble stone floors and baseboards
- Fully stone cladded vanity with stone countertop



RESIDENCE D (3RD FLOOR)  
2 BEDROOMS + DEN / 2.5 BATHS

A/C INTERIOR AREA	1,796 SQ. FT.	166.85 SQ. M.
TERRACE AREA	414 SQ. FT.	38.46 SQ. M.
TOTAL RESIDENCE	2,330 SQ. FT.	207.17 SQ. M.

RESIDENCE FEATURES

- High-speed elevator access
- Breathtaking Atlantic Ocean and city views through floor-to-ceiling windows
- Spacious interior floor plans with elegant smooth-finish ceilings rising to 10 feet (slab to slab, except where required to accommodate mechanical equipment)
- Expansive 10-foot-deep private balconies with glass railings
- Summer kitchen with under-counter Sub-Zero refrigerator
- Recessed lighting in select corridors and bathrooms
- Intelligent climate controls with digital thermostats
- Large capacity full size washer/dryer
- Smart building technology provides seamless access to select building amenities
- Pre-wired for audio speakers as well as motorized drapes and programmed lighting controls in select locations

SLEEK KITCHEN

- Armani Dada designed and fabricated cabinerty
- Elegant imported stone countertops and glass backsplashes
- Sub-Zero refrigerator / freezer and wine cooler
- State-of-the-art Wolf appliances

IMPECCABLE MASTER SUITE

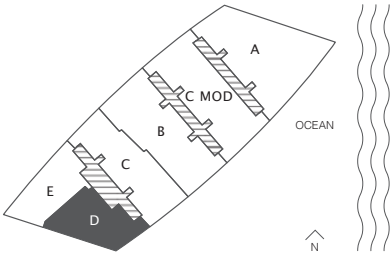
- Armani Dada designed and fabricated midnight bar containing subzero refrigerator, marble counter top and sink
- Armani Roca designed sinks and faucets
- Spa-inspired shower with Armani Roca wall-mounted handheld spray and large rainshower
- High-performance Toto Neorest toilet with integrated bidet technology

FINE POWDER ROOMS AND GUEST BATHROOMS

- Armani Roca sinks, faucets and Toto toilet in powder room
- Marble stone floors and baseboards
- Fully stone cladded vanity with stone countertop

RESIDENCE D (28TH FLOOR)  
2 BEDROOMS + DEN / 2.5 BATHS

A/C INTERIOR AREA	1,920 SQ. FT.	178.37 SQ. M.
TERRACE AREA	411 SQ. FT.	38.18 SQ. M.
TOTAL RESIDENCE	2,331 SQ. FT.	216.55 SQ. M.





RESIDENCE FEATURES

- High-speed elevator access
- Breathtaking Atlantic Ocean and city views through floor-to-ceiling windows
- Spacious interior floor plans with elegant smooth-finish ceilings rising to 10 feet (slab to slab, except where required to accommodate mechanical equipment)
- Expansive 10-foot-deep private balconies with glass railings
- Summer kitchen with under-counter Sub-Zero refrigerator
- Recessed lighting in select corridors and bathrooms
- Intelligent climate controls with digital thermostats
- Large capacity full size washer/dryer
- Smart building technology provides seamless access to select building amenities
- Pre-wired for audio speakers as well as motorized drapes and programmed lighting controls in select locations

SLEEK KITCHEN

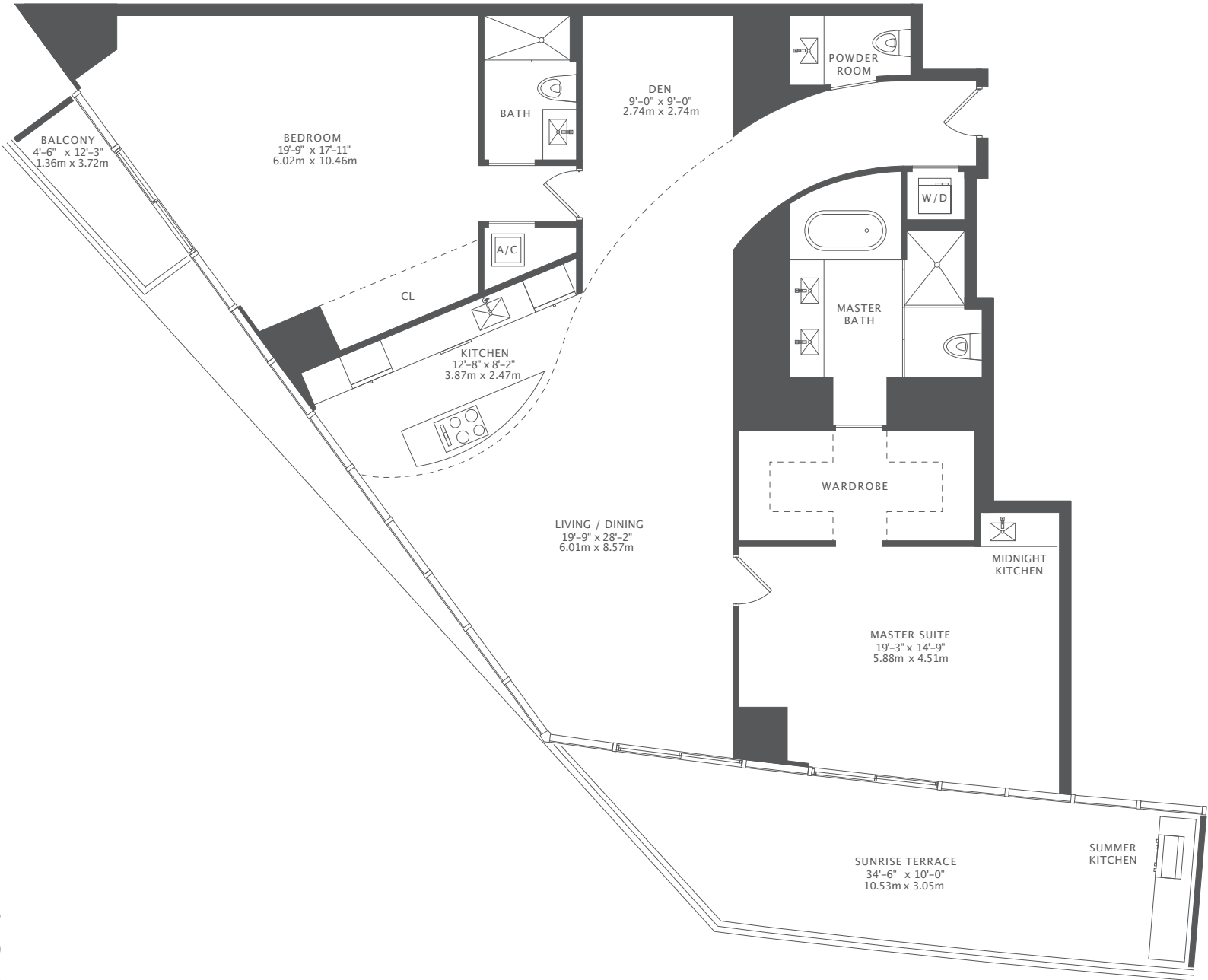
- Armani Dada designed and fabricated cabinerty
- Elegant imported stone countertops and glass backsplashes
- Sub-Zero refrigerator / freezer and wine cooler
- State-of-the-art Wolf appliances

IMPECCABLE MASTER SUITE

- Armani Dada designed and fabricated midnight bar containing subzero refrigerator, marble counter top and sink
- Armani Roca designed sinks and faucets
- Spa-inspired shower with Armani Roca wall-mounted handheld spray and large rainshower
- High-performance Toto Neorest toilet with integrated bidet technology

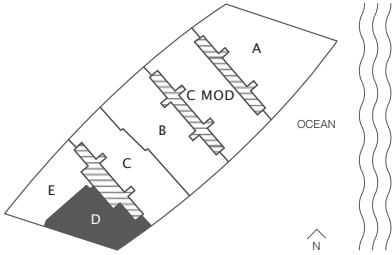
FINE POWDER ROOMS AND GUEST BATHROOMS

- Armani Roca sinks, faucets and Toto toilet in powder room
- Marble stone floors and baseboards
- Fully stone cladded vanity with stone countertop



RESIDENCE D (53RD FLOOR)  
2 BEDROOMS + DEN / 2.5 BATHS

A/C INTERIOR AREA	2,065 SQ. FT.	191.84 SQ. M.
TERRACE AREA	400 SQ. FT.	37.16 SQ. M.
TOTAL RESIDENCE	2,465 SQ. FT.	229.01 SQ. M.



RESIDENCE FEATURES

- High-speed elevator
- Breathtaking Atlantic Ocean and city views through floor-to-ceiling windows
- Spacious interior floor plans with elegant smooth-finish ceilings rising to 10 feet (slab to slab, except where required to accommodate mechanical equipment)
- Expansive 10-foot-deep private balconies with glass railings
- Summer kitchen with under-counter Sub-Zero refrigerator
- Recessed lighting in select corridors and bathrooms
- Intelligent climate controls with digital thermostats
- Large capacity full size washer/dryer
- Smart building technology provides seamless access to select building amenities
- Pre-wired for audio speakers as well as motorized drapes and programmed lighting controls in select locations

SLEEK KITCHEN

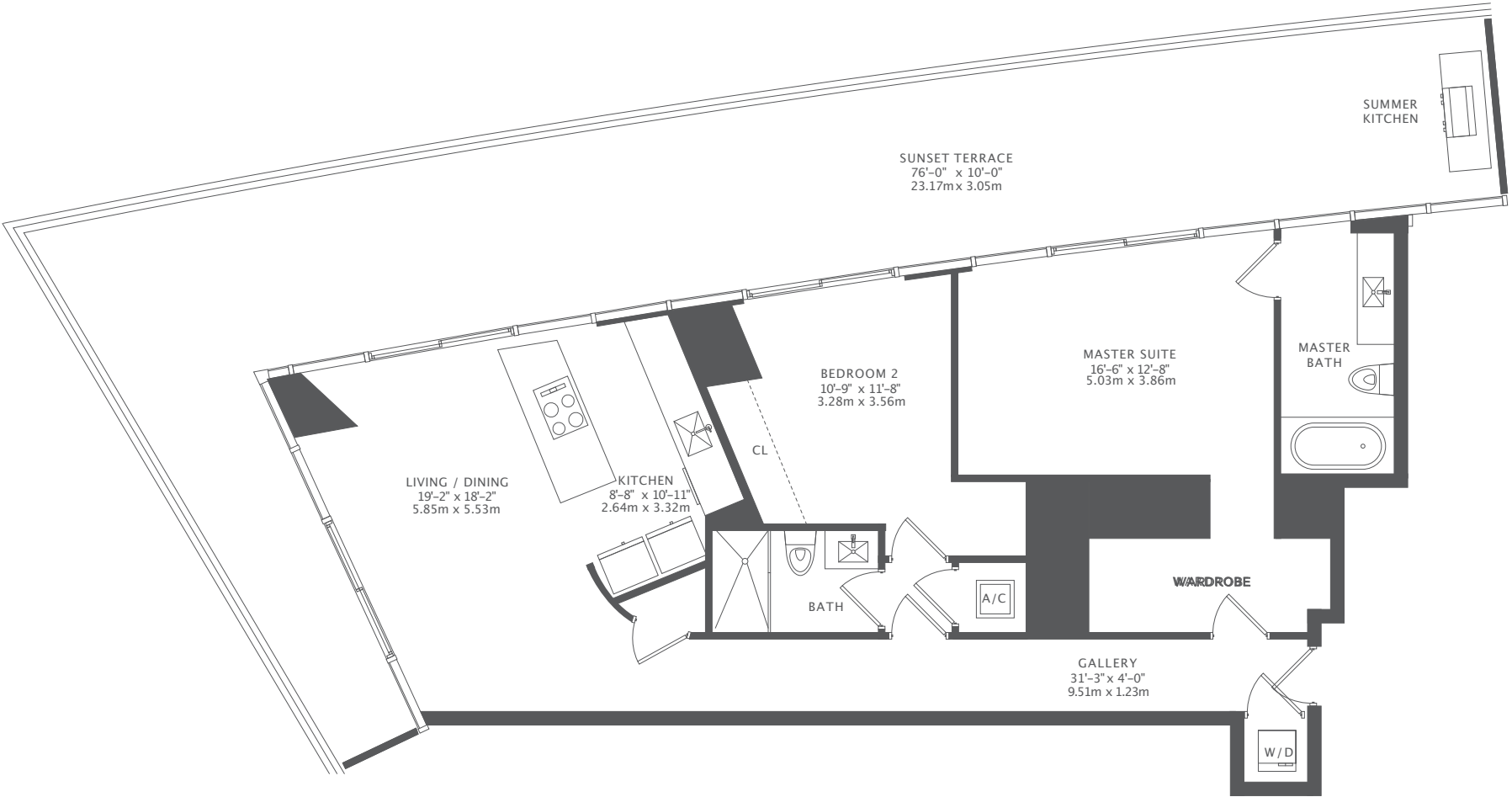
- Armani Dada designed and fabricated cabinerty
- Elegant imported stone countertops and glass backsplashes
- Sub-Zero refrigerator / freezer and wine cooler
- State-of-the-art Wolf appliances

IMPECCABLE MASTER SUITE

- Armani Roca designed sink and faucet
- Armani Roca designed tub & plumbing fixtures
- High-performance Toto Neorest toilet with integrated bidet technology
- Marble stone floors, walls and fully stone cladded vanity and stone countertop

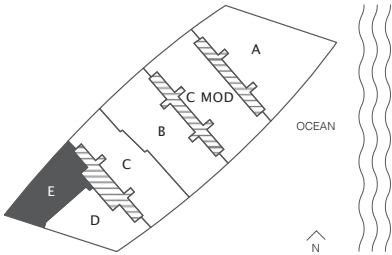
GUEST BATHROOMS

- Armani Roca sinks, faucets and Toto toilet in powder room
- Marble stone floors and baseboards
- Fully stone cladded vanity with stone countertop



RESIDENCE E (3RD FLOOR)  
2 BEDROOMS / 2 BATHS

A/C INTERIOR AREA	1,326 SQ. FT.	123.18 SQ. M.
TERRACE AREA	898 SQ. FT.	83.42 SQ. M.
TOTAL RESIDENCE	2,224 SQ. FT.	206.61 SQ. M.



RESIDENCE FEATURES

- High-speed elevator
- Breathtaking Atlantic Ocean and city views through floor-to-ceiling windows
- Spacious interior floor plans with elegant smooth-finish ceilings rising to 10 feet (slab to slab, except where required to accommodate mechanical equipment)
- Expansive 10-foot-deep private balconies with glass railings
- Summer kitchen with under-counter Sub-Zero refrigerator
- Recessed lighting in select corridors and bathrooms
- Intelligent climate controls with digital thermostats
- Large capacity full size washer/dryer
- Smart building technology provides seamless access to select building amenities
- Pre-wired for audio speakers as well as motorized drapes and programmed lighting controls in select locations

SLEEK KITCHEN

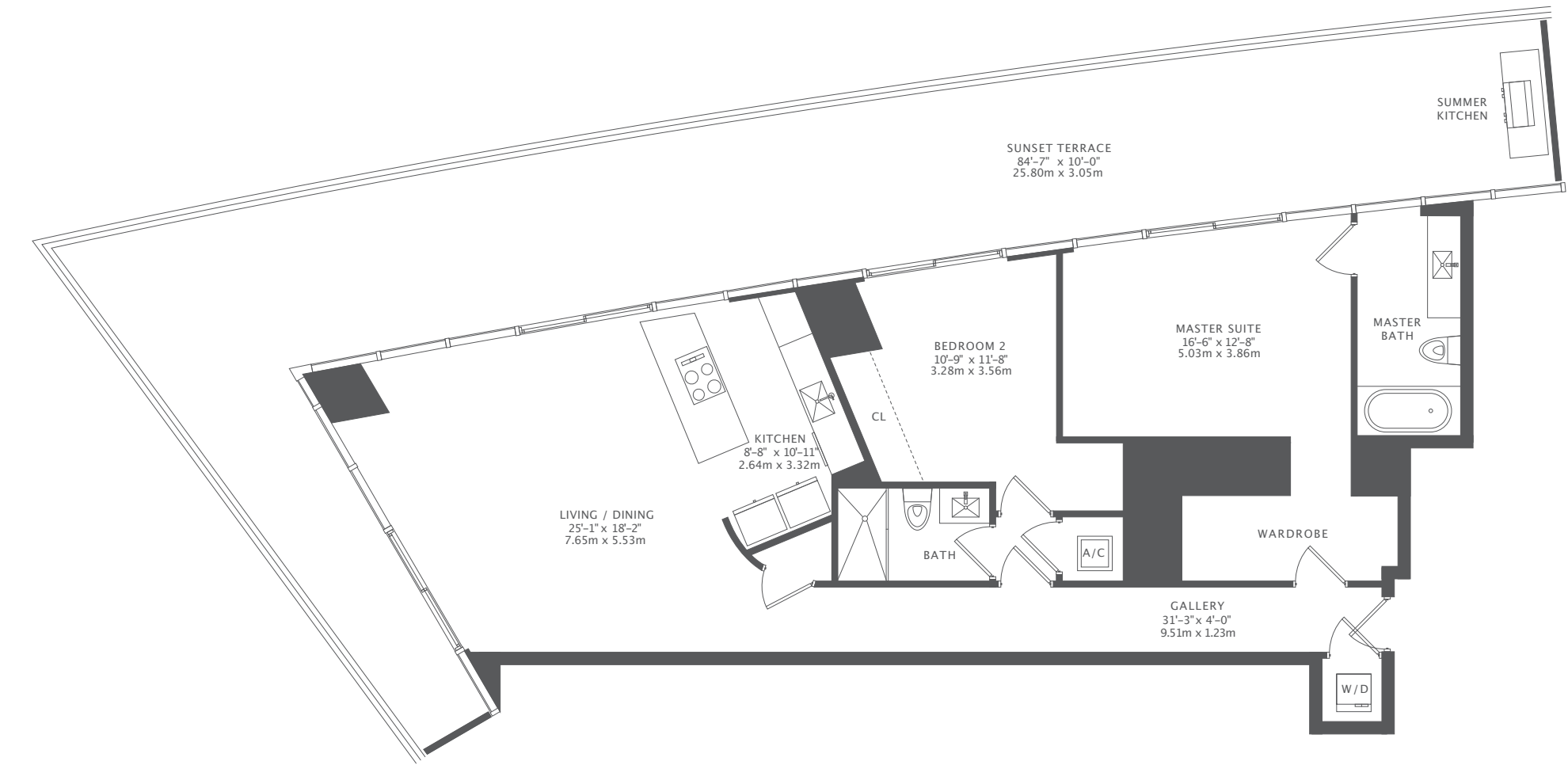
- Armani Dada designed and fabricated cabinerty
- Elegant imported stone countertops and glass backsplashes
- Sub-Zero refrigerator / freezer and wine cooler
- State-of-the-art Wolf appliances

IMPECCABLE MASTER SUITE

- Armani Roca designed sink and faucet
- Armani Roca designed tub & plumbing fixtures
- High-performance Toto Neorest toilet with integrated bidet technology
- Marble stone floors, walls and fully stone cladded vanity and stone countertop

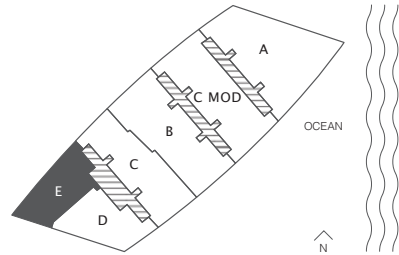
GUEST BATHROOMS

- Armani Roca sinks, faucets and Toto toilet in powder room
- Marble stone floors and baseboards
- Fully stone cladded vanity with stone countertop



RESIDENCE E (28TH FLOOR)  
2 BEDROOMS / 2 BATHS

A/C INTERIOR AREA	1,443 SQ. FT.	134.06 SQ. M.
TERRACE AREA	996 SQ. FT.	92.53 SQ. M.
TOTAL RESIDENCE	2,439 SQ. FT.	226.59 SQ. M.



RESIDENCE FEATURES

- High-speed elevator
- Breathtaking Atlantic Ocean and city views through floor-to-ceiling windows
- Spacious interior floor plans with elegant smooth-finish ceilings rising to 10 feet (slab to slab, except where required to accommodate mechanical equipment)
- Expansive 10-foot-deep private balconies with glass railings
- Summer kitchen with under-counter Sub-Zero refrigerator
- Recessed lighting in select corridors and bathrooms
- Intelligent climate controls with digital thermostats
- Large capacity full size washer/dryer
- Smart building technology provides seamless access to select building amenities
- Pre-wired for audio speakers as well as motorized drapes and programmed lighting controls in select locations

SLEEK KITCHEN

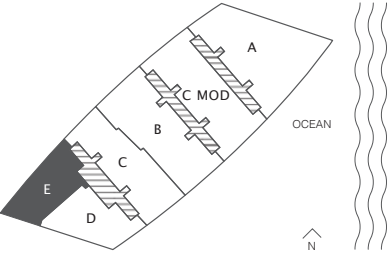
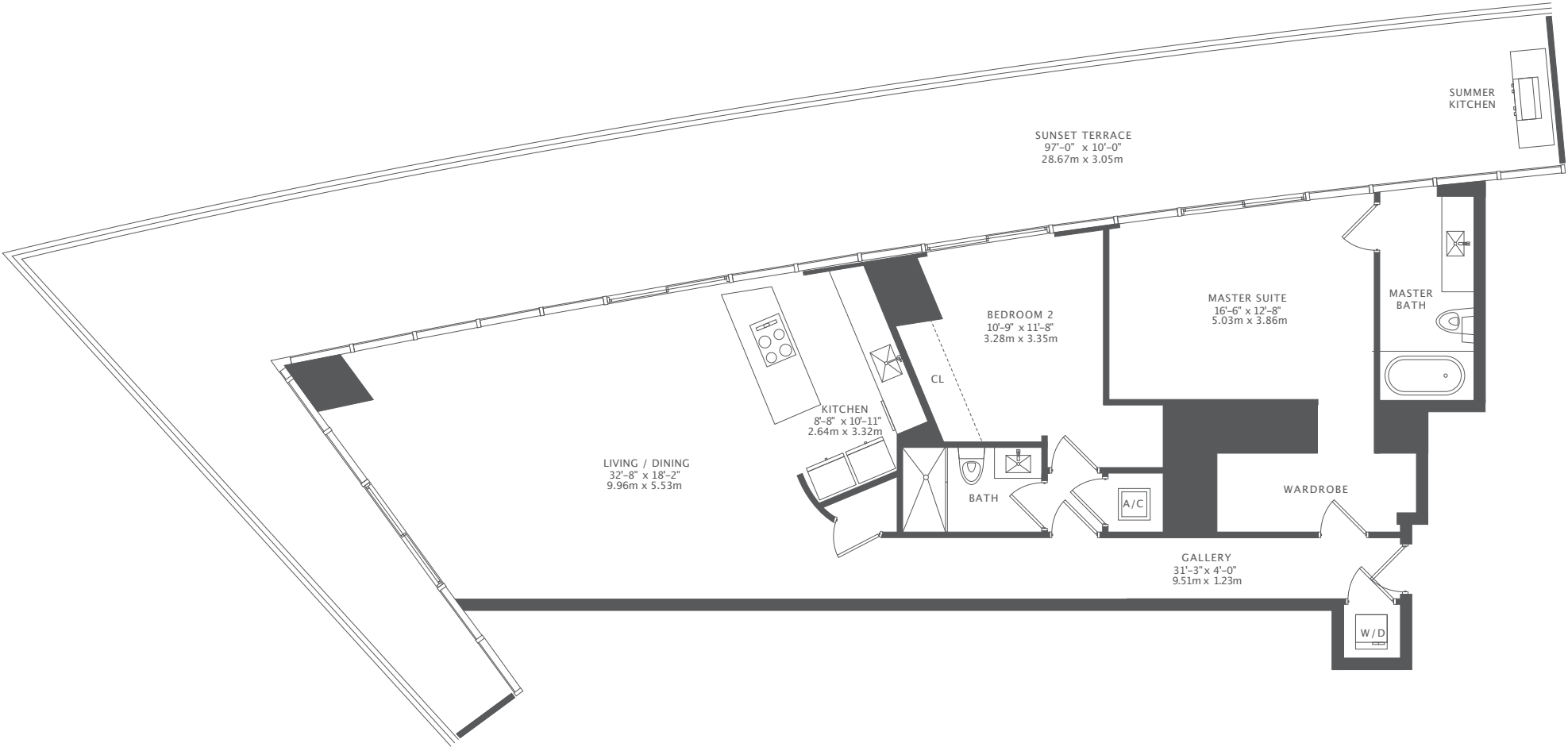
- Armani Dada designed and fabricated cabinerty
- Elegant imported stone countertops and glass backsplashes
- Sub-Zero refrigerator / freezer and wine cooler
- State-of-the-art Wolf appliances

IMPECCABLE MASTER SUITE

- Armani Roca designed sink and faucet
- Armani Roca designed tub & plumbing fixtures
- High-performance Toto Neorest toilet with integrated bidet technology
- Marble stone floors, walls and fully stone cladded vanity and stone countertop

GUEST BATHROOMS

- Armani Roca sinks, faucets and Toto toilet in powder room
- Marble stone floors and baseboards
- Fully stone cladded vanity with stone countertop



RESIDENCE E (53RD FLOOR)  
2 BEDROOMS / 2 BATHS

A/C INTERIOR AREA	1,567 SQ. FT.	145.58 SQ. M.
TERRACE AREA	1,123 SQ. FT.	104.33 SQ. M.
TOTAL RESIDENCE	2,690 SQ. FT.	249.90 SQ. M.



Depending on the method of calculation, the quoted square footage of any Unit may vary. The dimensions in the Unit shown in these floor plans have been calculated from the exterior boundaries of the exterior walls to the centerline of interior demising walls, including common elements such as structural walls and other interior structural components of the building and are greater than the dimensions that would be determined by using the description and definition of the "Unit" set forth in the Prospectus and the Declaration. The measurements of a room set forth on this floor plan are generally taken at the greatest points of each given room (as if the room were a perfect rectangle) without regard for any cutouts. Accordingly, the area of the actual room will typically smaller than the product obtained by multiplying the stated length by the stated width. All dimensions are approximate and may vary with actual construction and may change prior to completion. Any and all furnishings, finishes, or décor illustrated are not included with the purchase of the Unit. The layout, including the location of closets, doors, baths, appliances, plumbing fixtures, and entries may vary with actual construction. Consult the Prospectus for information regarding what is offered with the Unit and for the calculation of the Unit square footage and dimensions.