



Wynnshire Ridge

OSBORNE
REAL ESTATE GROUP

Sales Information

Osborne Real Estate Group | 828-324-1629 | info@osbornereg.com



WELCOME TO WYNNSHIRE RIDGE

“Hickory’s Premier Low-Maintenance Community for Active Living”

Developed by Lifestyle Homes of Distinction, Wynnschire Ridge blends timeless architecture with a stress-free lifestyle designed for comfort, connection, and convenience. Located in the heart of Hickory, NC, this community is ideal for homeowners seeking quality construction, thoughtful floor plans, and a lock-and-leave lifestyle in a vibrant neighborhood with amenities.

Enjoy tree-lined streets, shared green spaces, and community amenities—all just minutes from shopping, dining, health care, and the mountains.

Community Features:

- Maintenance-free living (landscaping & exterior)
- 2 and 3 bedroom floor plans with attached 2-car garage
- One-level, easy-access living
- Covered patios or four-season rooms (per plan)
- Decorative street lighting & sidewalks
- Professionally maintained landscaping
- Clubhouse with social space, kitchen, exercise room, and outdoor pool
- Convenient to I-40, US-321, and Lenoir-Rhyne University
- 2 min to grocery and pharmacy
- 10 min to Downtown Hickory
- 10 min to Lenoir-Rhyne University and major hospitals
- HOA/Maintenance: Exterior maintenance, landscaping, and common areas included



WYNNSHIRE RIDGE

Building Dreams Since 1996

Experience You Can Trust

At Lifestyle Homes, we are known for offering an easier, better life via our turn-key, semi-custom planned communities. Since 1996, the Lifestyle Homes team has provided low-maintenance lifestyle choices to over 1,000 new homeowners throughout the Greater Asheville and Western North Carolina areas. Lifestyle Homes' focus has been to build high-quality new homes, specializing in developing and building lifestyle-rich planned communities where the built-in amenities only add to the rewarding experience of homeownership.

What Sets Us Apart

- Proven track record across 12 communities
 - Award-winning team
 - Simple, stress-free process from plan selection to move-in
 - One-stop Design Center for all finishes
 - Focus on quality, value, and customer satisfaction
-

Professional Affiliations

- Asheville, Hendersonville, Hickory Home Builders Associations
 - Local Boards of Realtors
 - Area Chambers of Commerce
-

Our Warranty Process

- Receive a Homeowner Portfolio at signing of Purchase Agreement
- Pre-closing and 60-day post-closing inspections
- Post-closing follow-up from Customer Service
- One-year limited warranty with full support

Sales Information

Osborne Real Estate Group
828-324-1629
info@osbornereg.com



Quality Construction & Comfortable Living

Exterior Features

- Brick and fiber-cement siding exteriors (color-coordinated)
- 30-year architectural shingles
- Professional landscaping and sodded lawn areas
- City water, sewer, and natural gas services
- Covered entryways and patios (per plan)
- Insulated garage doors with opener & remote
- Concrete driveways and walkways

Interior Features

- Vaulted ceilings in great room
- Gas fireplace with stone surround (per plan)
- Den, sunroom, or bonus space (per plan)
- Raised-panel doors and lever hardware
- Large windows with abundant natural light
- Spacious single-level floor plans with minimal steps
- Melamine shelving in owner's closet
- Pre-finish wood floor and designer tile (per plan)

Kitchen Highlights

- Granite countertops
- Lazy susans and roll-outs (per plan)
- Breakfast bar or kitchen island (per plan)
- Raised-panel cabinets with designer hardware
- Electric range, microwave with exterior venting, dishwasher, disposal
- Pantry and under-cabinet lighting (per plan)
- Electric range, microwave with exterior venting, dishwasher, disposal
- Pantry and under-cabinet lighting (per plan)

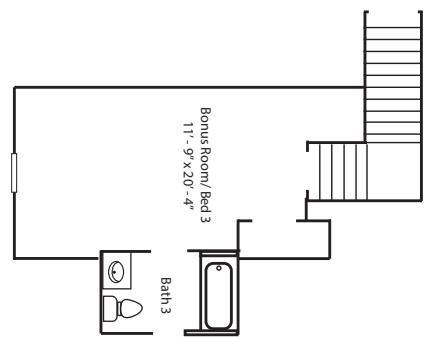
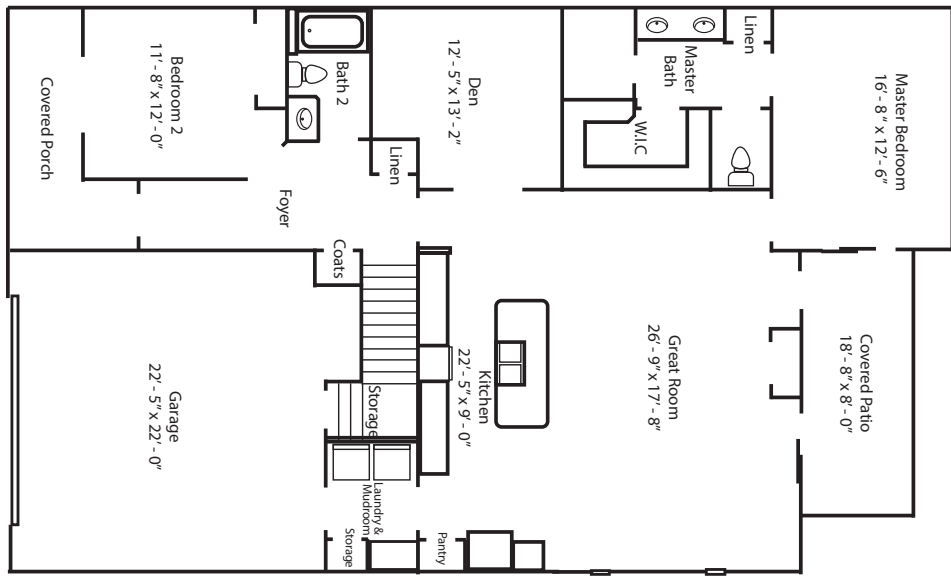
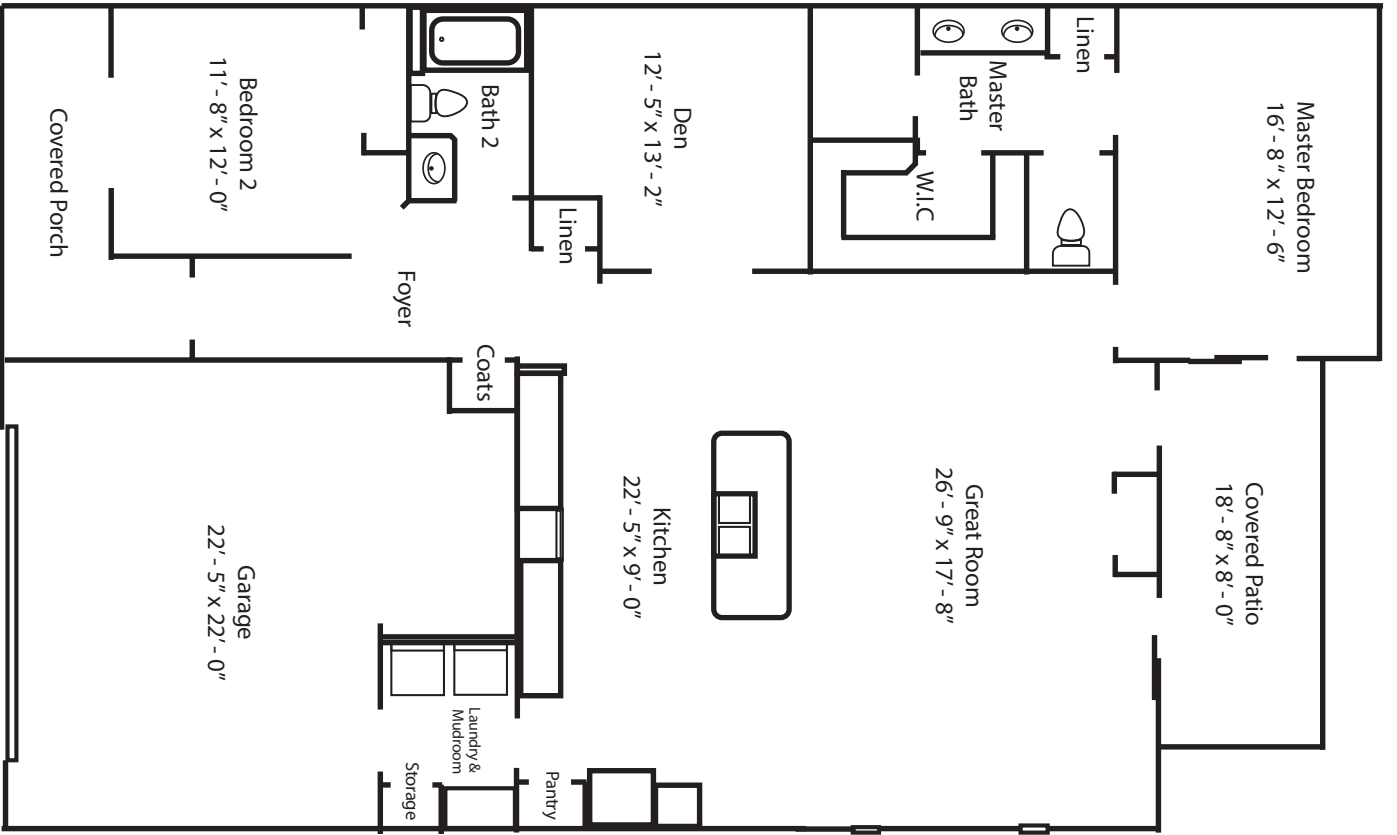
Bathroom Features

- Owner's suite with double granite vanity, full mirror
- Tiled walk-in shower and floor (per plan)
- Second bath with tub/shower combo and granite vanity
- Linen closet and designer fixtures

Energy Efficiency & Systems

- Tankless water heater
- 92% gas heating / 14 SEER A/C
- R-38 ceiling, R-14 wall insulation
- Ceiling fans in main rooms (per plan)
- Pre-wired for cable, telephone, CAT5
- Smoke & carbon monoxide detectors

Brighton 1



Brighton 2

Living Made Simple at Wynnshire Ridge

Your next chapter starts here

What the Community Has to Offer

Our community development is thoughtfully designed to bring people together and create a sense of home. With a range of amenities and activities tailored to your interests, you'll quickly discover why we are more than just a place to live. Come and experience the joy of community living at any of our communities. Discover a place where friendships blossom, where every day brings new opportunities, and where you can truly make yourself at home. Visit us today to learn more about how we can become your new home and vibrant community!

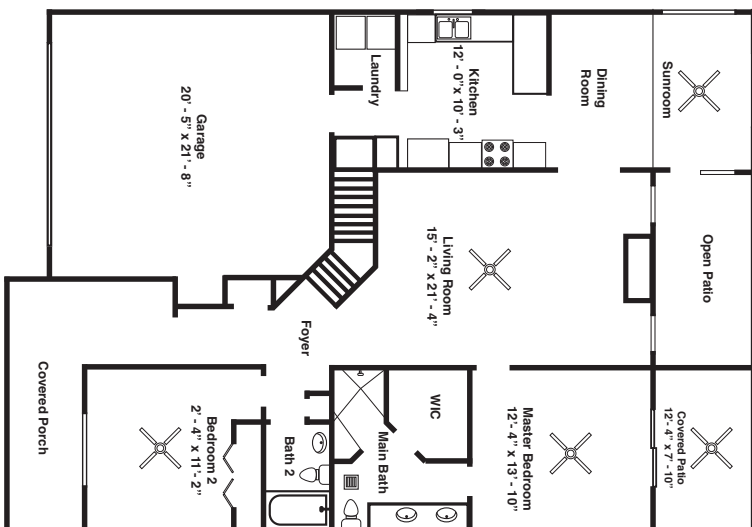
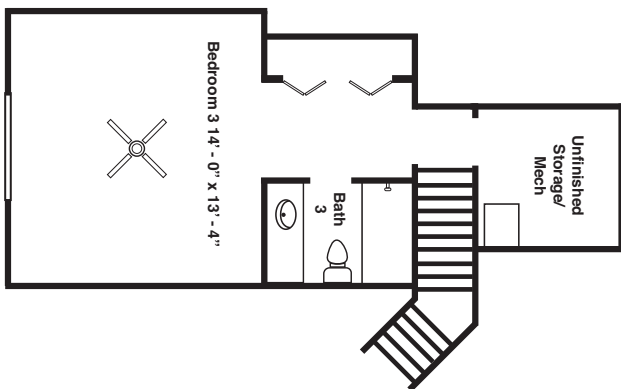
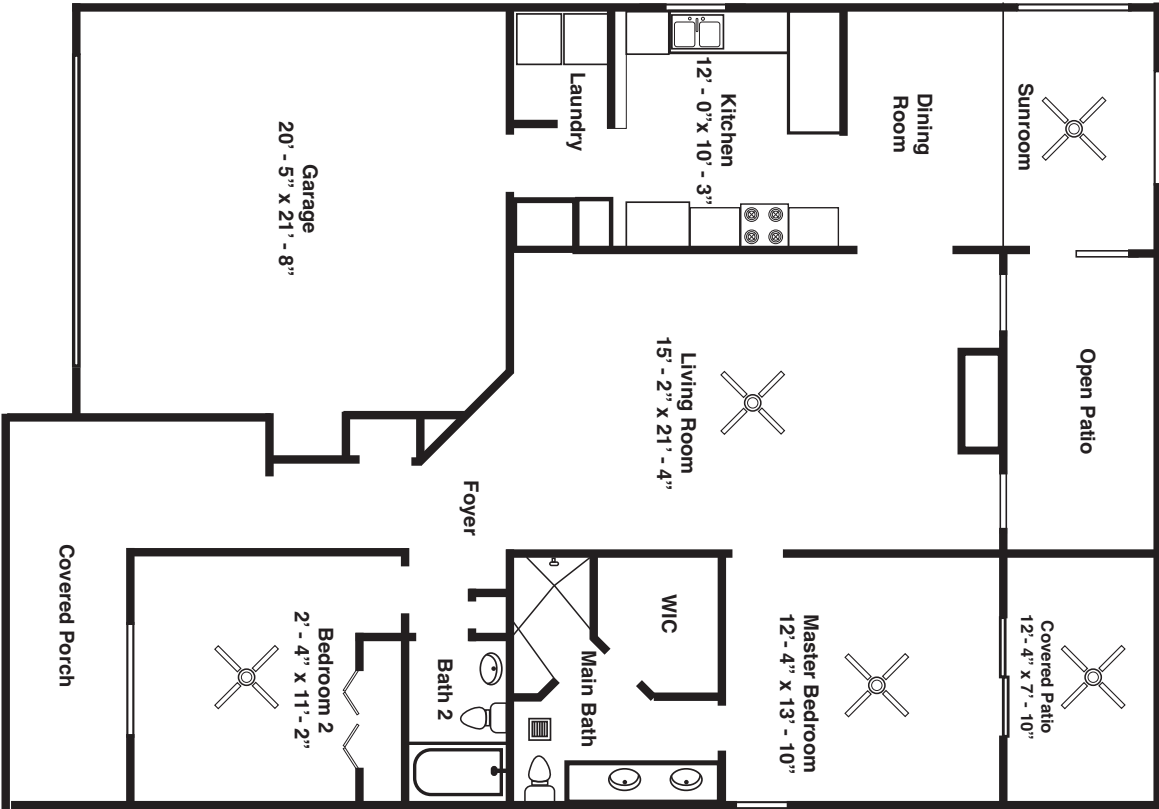


Services We Offer: Exercise Trail, Heated Outdoor Pool, 5 Fitness Stations, Gas Barbecue Grill, Fireplace and pool table, and a community club house

The Lifestyle at Wynnshire Ridge is Key...

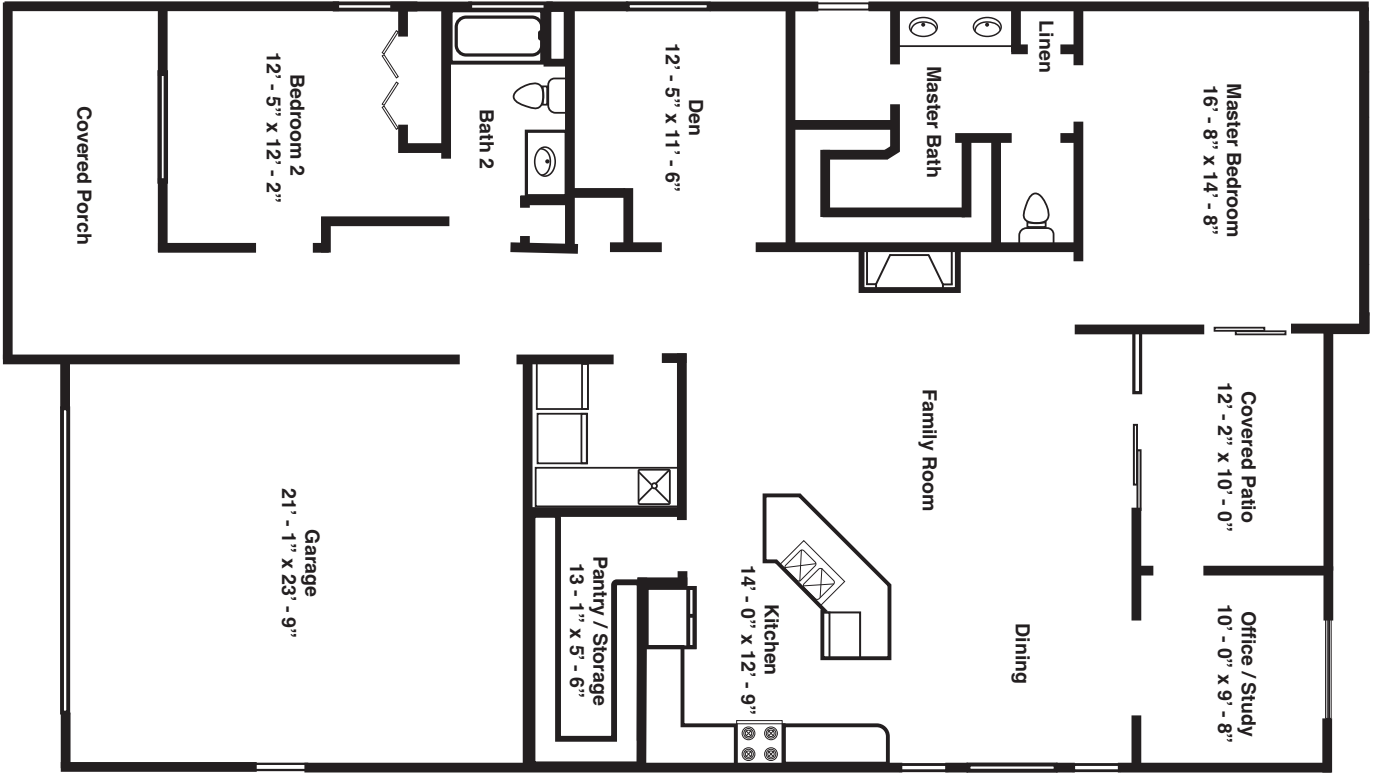
Located at the foot of the Blue Ridge Mountains between Asheville and Charlotte, Hickory offers year-round outdoor activities, a vibrant arts scene, higher education, and nationally recognized healthcare at Frye Regional Hospital and Catawba Valley Medical Center. Wynnshire Ridge is close to shopping and dining and provides its own amenities for relaxation and community connection, including a clubhouse with a fitness center, big-screen TV, Wi-Fi, billiards, full kitchen, and lending library. In warmer months, residents enjoy the outdoor pool, spacious patio, and grilling station—perfect for entertaining.

Camelot 1



Camelot 2

Devonshire 1



Devonshire 2

