



WALDORF ASTORIA®  
RESIDENCES ▪ RAS AL KHAIMAH

والدورف أستوريا ريزيدنسز رأس الخيمة

FLOOR PLAN

---

SKY PALACE

# SKY PALACE

TOTAL AREA  
303.0 SQ.M. / 3,260.3 SQ.FT.

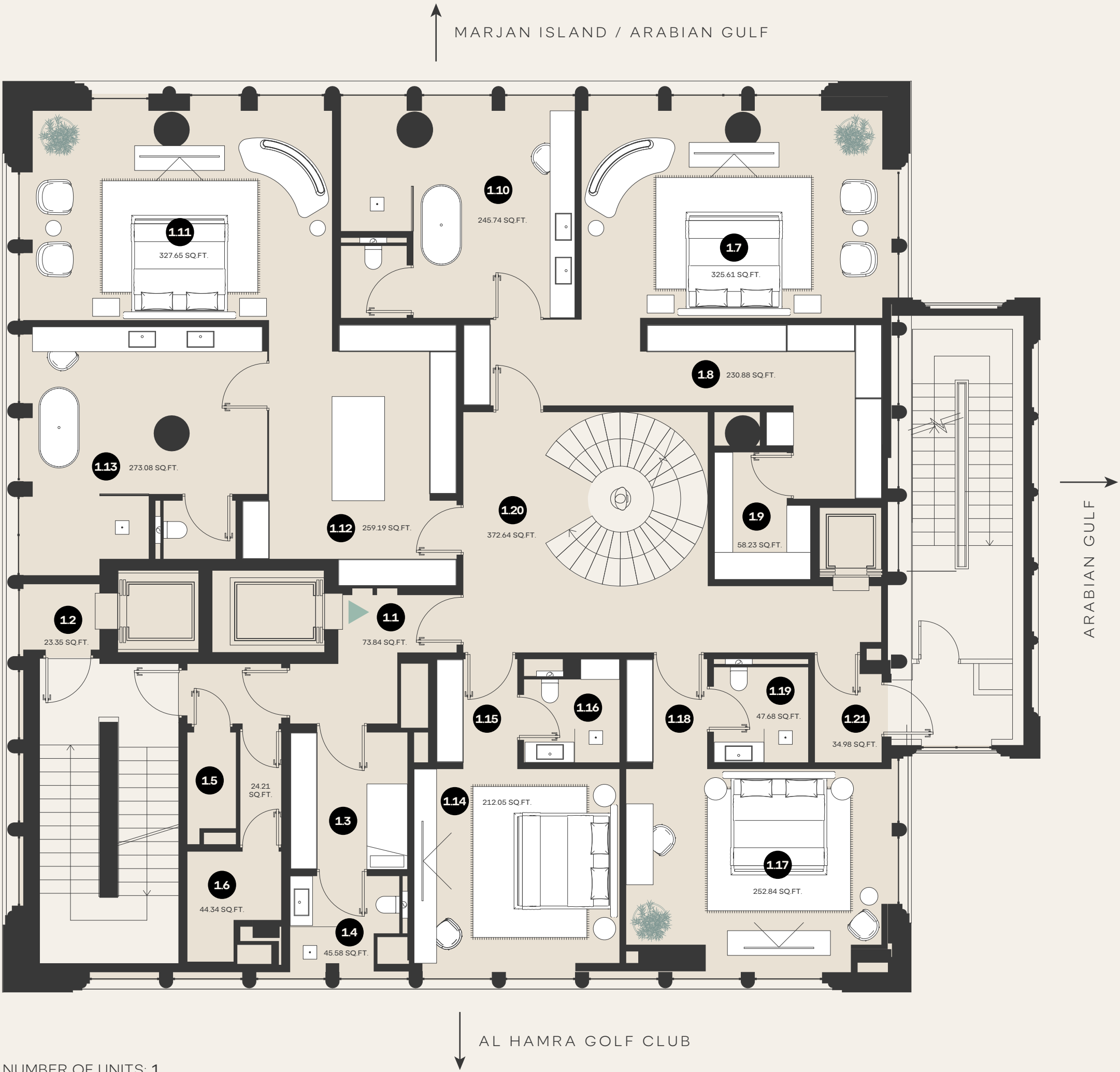
UNIT TYPE  
TRIPLEX

VIEWS  
360 VIEWS

FLOORS  
21ST

### EXPLICATION OF PREMISES

- 1.1 FOYER
- 1.2 MAID'S HALLWAY
- 1.3 MAID'S BEDROOM
- 1.4 MAID'S BATHROOM
- 1.5 TELECOM
- 1.6 ELECTRIC
- 1.07 MASTER BEDROOM 1
- 1.08 MASTER CLOSET 1
- 1.09 MASTER BEDROOM 1 SAFE
- 1.10 MASTER BATHROOM 1
- 1.11 MASTER BEDROOM 2
- 1.12 MASTER CLOSET 2
- 1.13 MASTER BATHROOM 2
- 1.14 BEDROOM 3
- 1.15 CLOSET 3
- 1.16 BATHROOM 3
- 1.17 BEDROOM 4
- 1.18 CLOSET 4
- 1.19 BATHROOM 4
- 1.20 HALL
- 1.21 SERVICE HALL



ARTIST RENDERINGS: the artist representations and interior decorations, finishes, appliances and furnishings are provided for illustrative purposes only. The Developer makes no representations or warranties except as set forth in the sales agreement. Developer reserves the right to substitute materials, appliances, equipment, fixtures and other construction and design details specified herein with similar materials, appliances, equipment and/or fixtures of substantially equal or better quality. Developer reserves the right to make changes in accordance with the terms of the Offering Plan. The use of any designations, labels or nomenclature is for marketing purposes only.



# SKY PALACE

TOTAL AREA  
303.0 SQ.M. / 3,260.3 SQ.FT.

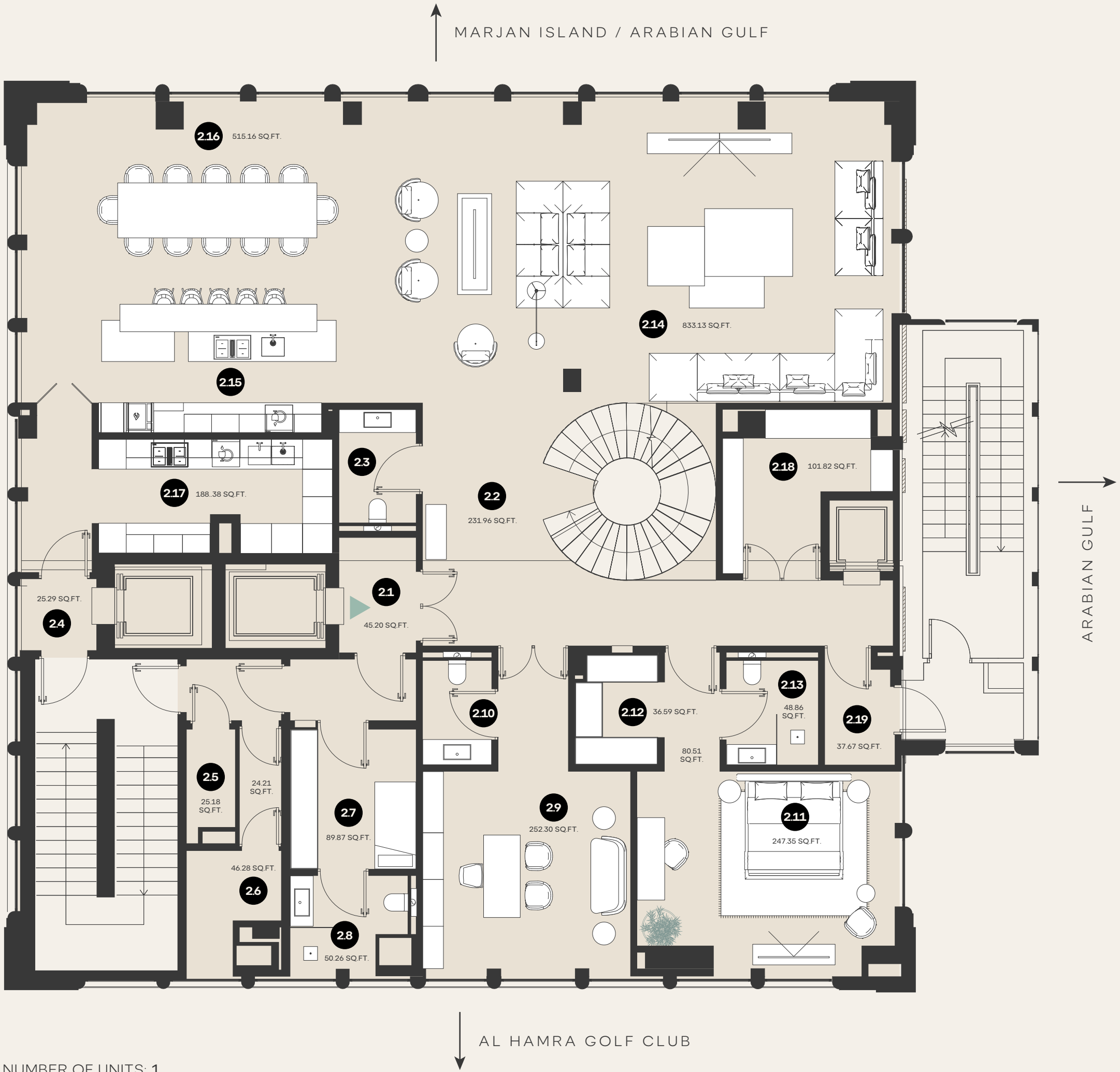
UNIT TYPE  
TRIPLEX

VIEWS  
360 VIEWS

FLOORS  
22ND

## EXPLICATION OF PREMISES

- 2.1 FOYER
- 2.2 MAIN HALL
- 2.3 POWDER ROOM
- 2.4 MAID'S HALLWAY
- 2.5 TELECOM
- 2.6 ELECTRIC ROOM
- 2.7 MAID'S BEDROOM 2
- 2.8 MAID'S BATHROOM 2
- 2.9 OFFICE
- 2.10 OFFICE BATHROOM
- 2.11 BEDROOM 5
- 2.12 CLOSET 5
- 2.13 BATHROOM
- 2.14 LIVING AREA
- 2.15 KITCHEN AREA / BREAKFAST COUNTER
- 2.16 DINING AREA
- 2.17 PREP KITCHEN
- 2.18 WINE ROOM
- 2.19 SERVICE HALL



NUMBER OF UNITS: 1  
STARTING PRICE: AED 130,133,531

ARTIST RENDERINGS: the artist representations and interior decorations, finishes, appliances and furnishings are provided for illustrative purposes only. The Developer makes no representations or warranties except as set forth in the sales agreement. Developer reserves the right to substitute materials, appliances, equipment, fixtures and other construction and design details specified herein with similar materials, appliances, equipment and/or fixtures of substantially equal or better quality. Developer reserves the right to make changes in accordance with the terms of the Offering Plan. The use of any designations, labels or nomenclature is for marketing purposes only.



TOTAL AREA  
303.0 SQ.M. / 3,260.3 SQ.FT.

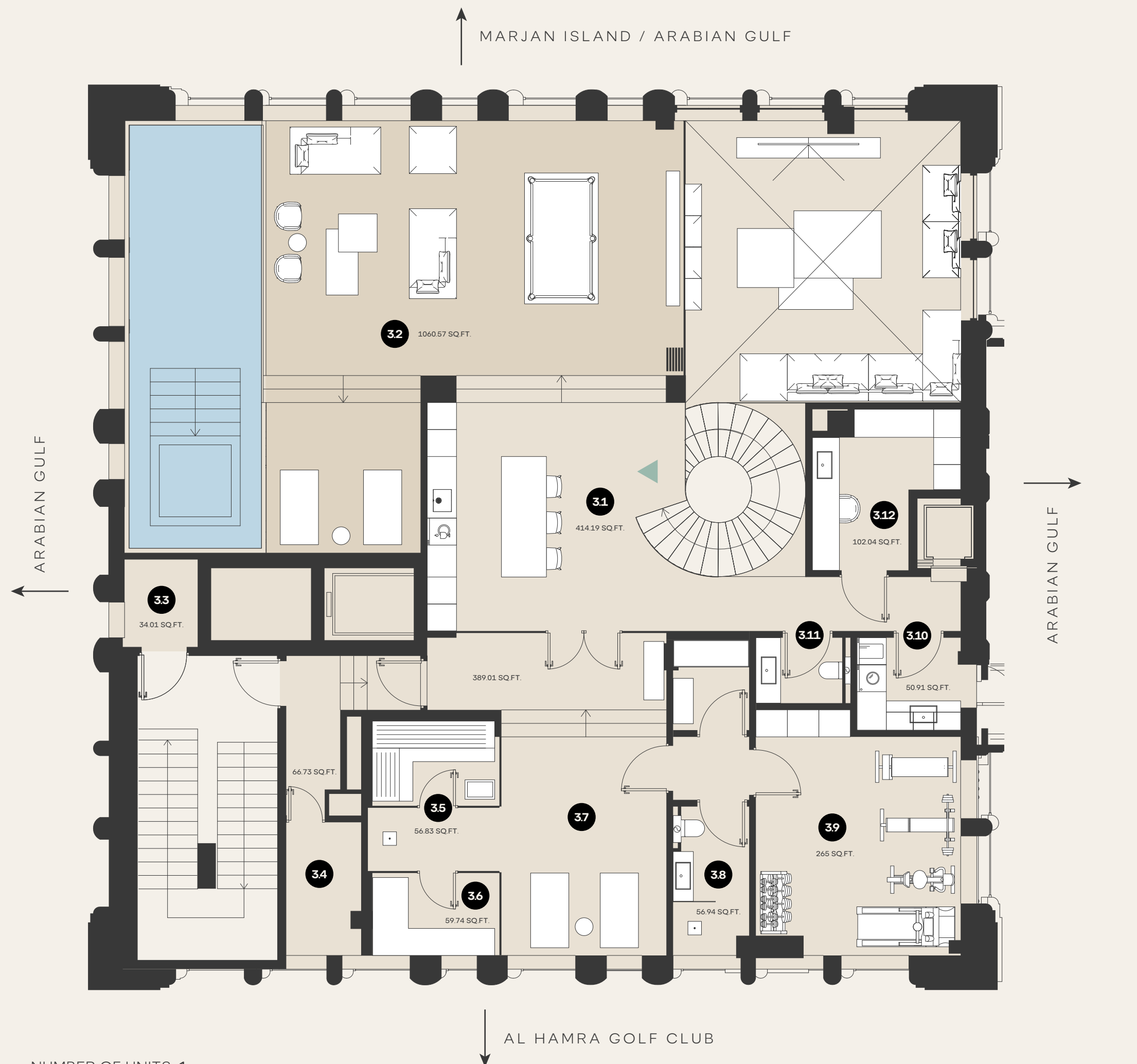
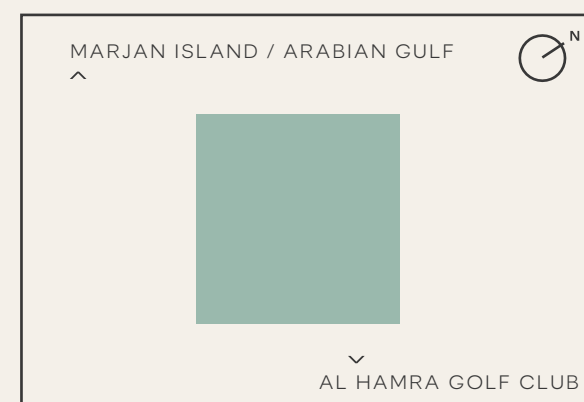
UNIT TYPE  
TRIPLEX

VIEWS  
360 VIEWS

FLOORS  
23RD

## EXPLICATION OF PREMISES

- |      |                |
|------|----------------|
| 3.1  | HALL           |
| 3.2  | TERRACE-POOL   |
| 3.3  | TECHNICAL ROOM |
| 3.4  | ELECTRIC ROOM  |
| 3.5  | SAUNA          |
| 3.6  | STEAM ROOM     |
| 3.7  | SPA AREA       |
| 3.8  | BATHROOM       |
| 3.9  | GYM            |
| 3.10 | LAUNDRY        |
| 3.11 | POWDER ROOM    |
| 3.12 | SALON          |



NUMBER OF UNITS: 1  
STARTING PRICE: AED 130,133,531

ARTIST RENDERINGS: the artist representations and interior decorations, finishes, appliances and furnishings are provided for illustrative purposes only. The Developer makes no representations or warranties except as set forth in the sales agreement. Developer reserves the right to substitute materials, appliances, equipments, fixtures and other construction and design details specified herein with similar materials, appliances, equipment and/or fixtures of substantially equal or better quality. Developer reserves the right to make changes in accordance with the terms of the Offering Plan. The use of any designations, labels or nomenclature is for marketing purposes only.

