



WALDORF ASTORIA®
RESIDENCES ▪ RAS AL KHAIMAH

والدورف أستوريا ريزيدنسز رأس الخيمة

SUITE 1901

4 BED - PENTHOUSE





A LEGACY REIMAGINED ON THE SHORES OF RAS AL KHAIMAH

Where a refined haven
weaves into the elegant tapestry
of its iconic destination



WALDORF ASTORIA®
RESIDENCES • RAS AL KHAIMAH

SUITE 1901

Floor	19 th & 20 th
Bedrooms	4
View	Full 360
Maid's Room	Yes
Parkings	3
Total Area	19 th Floor - 3,400.2 SQ.FT. 20 th Floor - 3,400.2 SQ.FT.
Sales Price	AED 50,000,000

PAYMENT PLAN

Payment Plan	Month	%	Price (AED)
Down Payment		20%	10,000,000
1 st Instalment	Oct 2025	5%	2,500,000
2 nd Instalmen	Dec 2025	5%	2,500,000
3 rd Instalment	Mar 2026	5%	2,500,000
4 th Instalment	Jun 2026	5%	2,500,000
5 th Instalment	Sep 2026	5%	2,500,000
Upon Handover	Mar 2027	5%	2,500,000
6 Months from Handover	Oct 2027	10%	5,000,000
12 Months from Handover	Mar 2028	8%	4,000,000
18 Months from Handover	Oct 2028	8%	4,000,000
24 Months from Handover	Mar 2029	8%	4,000,000
30 Months from Handover	Oct 2029	8%	4,000,000
36 Months from Handover	Mar 2030	8%	4,000,000
Total		100%	50,000,000

BANK ACCOUNT DETAILS

Beneficiary Name: AL HAMRA LUXURY RESIDENCES LLC
Bank Name: Abu Dhabi Commercial Bank (ADCB)
Bank Address: Al Naeem Mall Branch, Ras Al Khaimah
Bank A/c: 13595448920001
IBAN: AE230030013595448920001
SWIFT CODE: ADCBAEAA



4 BEDROOM PENTHOUSE DUPLEX

TOTAL AREA
316.0 SQ.M. / 3400.2 SQ.FT.

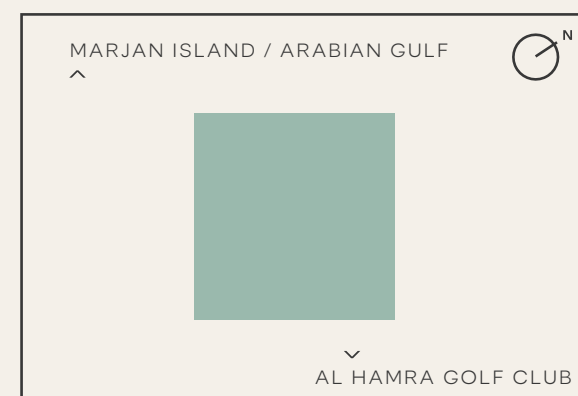
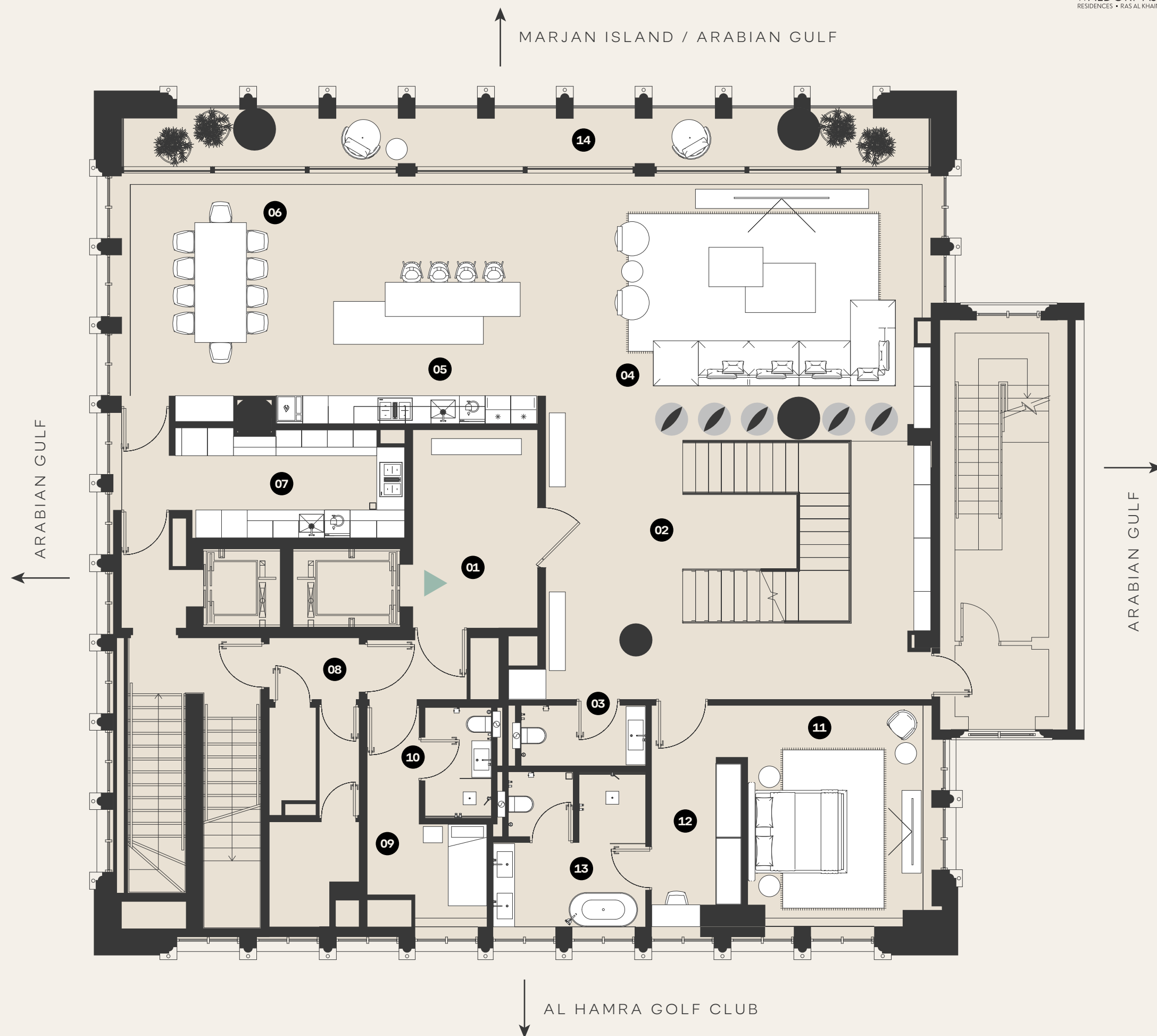
UNIT TYPE
DUPLEX

VIEWS
360 VIEWS

FLOORS
19TH

EXPLICATION OF PREMISES

- 01 FOYER
- 02 HALL
- 03 POWDER ROOM
- 04 LIVING AREA
- 05 KITCHEN AREA / BREAKFAST COUNTER
- 06 DINING AREA
- 07 PREP KITCHEN
- 08 CORRIDOR
- 09 MAID'S BEDROOM
- 10 MAID'S BATHROOM
- 11 BEDROOM 1
- 12 BEDROOM 1 CLOSET
- 13 BATHROOM 1
- 14 TERRACE



ARTIST RENDERINGS: the artist representations and interior decorations, finishes, appliances and furnishings are provided for illustrative purposes only. The Developer makes no representations or warranties except as set forth in the sales agreement. Developer reserves the right to substitute materials, appliances, equipment, fixtures and other construction and design details specified herein with similar materials, appliances, equipment and/or fixtures of substantially equal or better quality. Developer reserves the right to make changes in accordance with the terms of the Offering Plan. The use of any designations, labels or nomenclature is for marketing purposes only.

01m 5m 10m 25m

4 BEDROOM PENTHOUSE DUPLEX

TOTAL AREA
316.0 SQ.M. / 3400.2 SQ.FT.

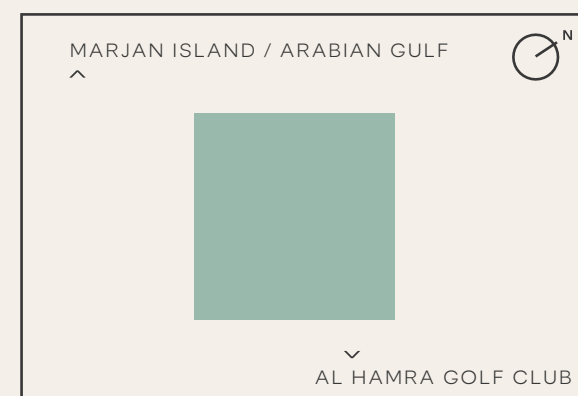
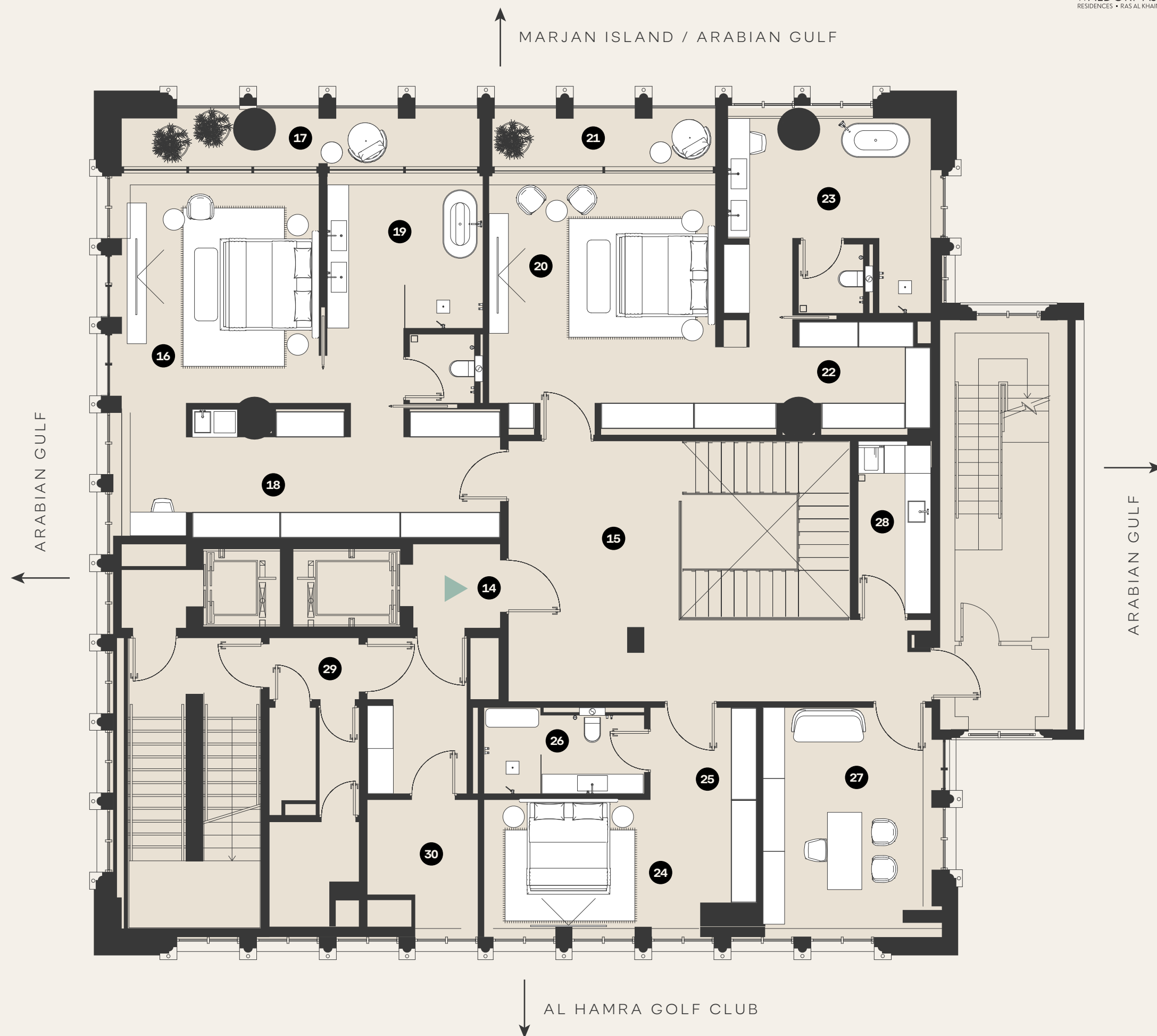
UNIT TYPE
DUPLEX

VIEWS
360 VIEWS

FLOORS
20TH

EXPLICATION OF PREMISES

- 14 FOYER 2
- 15 HALL 2
- 16 MASTER BEDROOM
- 17 MASTER BEDROOM TERRACE
- 18 MASTER CLOSET
- 19 MASTER BATHROOM
- 20 BEDROOM 2
- 21 BEDROOM 2 TERRACE
- 22 CLOSET 2
- 23 BEDROOM 2 BATHROOM
- 24 BEDROOM 3
- 25 CLOSET 3
- 26 BEDROOM 3 BATHROOM
- 27 OFFICE
- 28 LAUNDRY
- 29 CORRIDOR
- 30 GSM ROOM



ARTIST RENDERINGS: the artist representations and interior decorations, finishes, appliances and furnishings are provided for illustrative purposes only. The Developer makes no representations or warranties except as set forth in the sales agreement. Developer reserves the right to substitute materials, appliances, equipment, fixtures and other construction and design details specified herein with similar materials, appliances, equipment and/or fixtures of substantially equal or better quality. Developer reserves the right to make changes in accordance with the terms of the Offering Plan. The use of any designations, labels or nomenclature is for marketing purposes only.

01m 5m 10m 25m



2 BEDROOM TYPE 2



2 BEDROOM TYPE 3



3 BEDROOM TYPE 3



4 BEDROOM



5 BEDROOM



SKY PALACE



BAR & CIGAR LOUNGE



LOBBY



A SYMPHONY OF SPACE AND SOUL

Step into a world where every residence is a lyrical
blend of artistry, elegance, and timeless grace.



AN ICON OF CONTEMPORARY ELEGANCE

Elegantly designed with bespoke finishes and modern sophistication, each residence blends timeless charm with contemporary design—creating a refined sanctuary of luxury and style.

RESIDENCE HIGHLIGHTS:

2, 3, 4 & 5-bedroom residences with high-end finishes.

Floor-to-ceiling windows and terraces overlooking the Arabian Gulf and Al Marjan Island.

Custom cabinetry with integrated appliances.

Marble-finished bathrooms with premium fixtures.

Smart home system with voice control.

Walk-in closets and ample storage.

High-speed connectivity.

Private lobby and dedicated elevators.

Elderly-accessible and pet-friendly design.



WHERE INDULGENCE TAKES FORM

Step into a realm where indulgence takes form, and every detail
unveils a world of unmatched luxury and refinement.



EXCLUSIVE RESIDENT AMENITIES

A host of services and private amenities are always at your disposal along with round-the-clock concierge dedicated for residents to ensure a smooth and enjoyable experience every time you step in or out of your residence.

Personal Concierge & PRO Services

Longevity Spa & Fitness Lounge

Resident Private Lounge

Business Centre | Resident Library | Cigar Lounge

Private Wine Locker & Cellar | Sports Simulation

Cinema Lounge | Starlight Terrace

Bars & Lounges

Pet Grooming Spa

RESORT- WIDE FACILITIES FOR
THE RESIDENTS INCLUDE:

Curated Retail Boutiques

Beauty Salon

World-Class Spa

Multiple Swimming Pools

Kids' Club & Splash Pool with Splash Pad

Tennis Courts

Fine Dining Restaurants

Private Dining Rooms

Exclusive Chef's Table Experiences



UNVEIL A WORLD OF UNMATCHED PRIVILEGES

Step into a realm where every stay is enhanced by unparalleled rewards and exclusive experiences, reserved just for you.

HILTON PRIVILEGES

As a Waldorf Astoria Residence owner, you are instantly elevated to Hilton Honors Diamond status—granting you access to a world of elite privileges and bespoke experiences across Hilton’s global portfolio. From exclusive rewards to elevated stays, enjoy unparalleled recognition wherever you go.

DIAMOND STATUS PRIVILEGES INCLUDE::

- Guaranteed Hilton Honors discount rates
- Points redeemable for free nights, travel perks, and more
- No resort fees on reward stays
- Access to exclusive Hilton Honors Experiences
- Complimentary fifth night on reward stays
- Elite Rollover Nights
- Discounts on all-inclusive spa services
- Daily food & beverage credit or continental breakfast
- 100% bonus points on hotel stays
- Space-available room upgrades
- Complimentary premium Wi-Fi
- 48-hour room availability guarantee
- Executive Lounge access
- Elite status gifting
- Diamond status extension





DISCLAIMER:

The Waldorf Astoria brand and Waldorf Astoria trademarks (collectively, the "Trademarks") are owned by Hilton Worldwide Manage Limited, an affiliate of Hilton Worldwide Holdings Inc. ("Hilton"). The Trademarks may in the future be transferred to other affiliates of Hilton. The Residential Units are not owned, developed, or sold by Hilton and Hilton does not make any representations, warranties or guaranties whatsoever with respect to the Residences. The Developer uses the Waldorf Astoria brand and certain of the Trademarks under a limited, non-exclusive, non-transferable licence from Hilton or its affiliate(s). The licence may be terminated or may expire without renewal, in which case the Residences will not be identified as a Waldorf Astoria branded project or have any rights to use the Trademarks.



WALDORF ASTORIA®
RESIDENCES • RAS AL KHAIMAH



www.waldorfastoriaresidencesrak.com