



Fidelity National Title - Team Title Guy

Ontario, CA

REPORT FOR 5/4/2026

Single-Family Homes

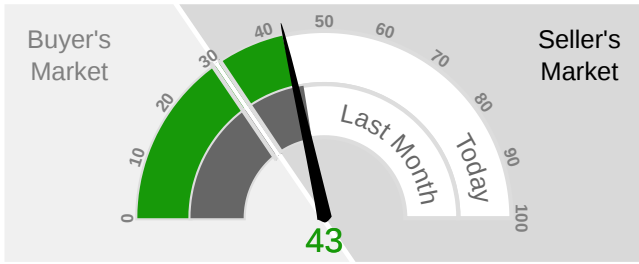


Have you seen the markets? Rates, DOM, Inventory?

This week the median list price for Ontario, CA is \$780,495 with the market action index hovering around 43. This is less than last month's market action index of 45. Inventory has increased to 168.

MARKET ACTION INDEX

This answers "How's the Market?" by comparing rate of sales versus inventory.



Slight Seller's Advantage

MARKET NARRATIVE

The market has been cooling over time and prices plateaued for a while. Despite the consistent decrease in MAI, we're in the Seller's zone. Watch for changes in MAI. If the MAI resumes its climb, prices will likely follow suit. If the MAI drops consistently or falls into the Buyer's zone, watch for downward pressure on prices.

MARKET SEGMENTS

Each segment below represents approximately 25% of the market ordered by price.

Median Price	Sq. Ft.	Lot Size	Beds	Bath	Age	New	Absorbed	DOM
\$950,500	2,823	4,500 - 6,500 sqft	5	3	7	4	1	38
\$828,500	2,365	0 - 4,500 sqft	4	3	6	6	4	38
\$737,200	1,696	4,500 - 6,500 sqft	3	2	43	3	6	52
\$641,995	1,200	6,500 - 8,000 sqft	3	2	71	6	3	42

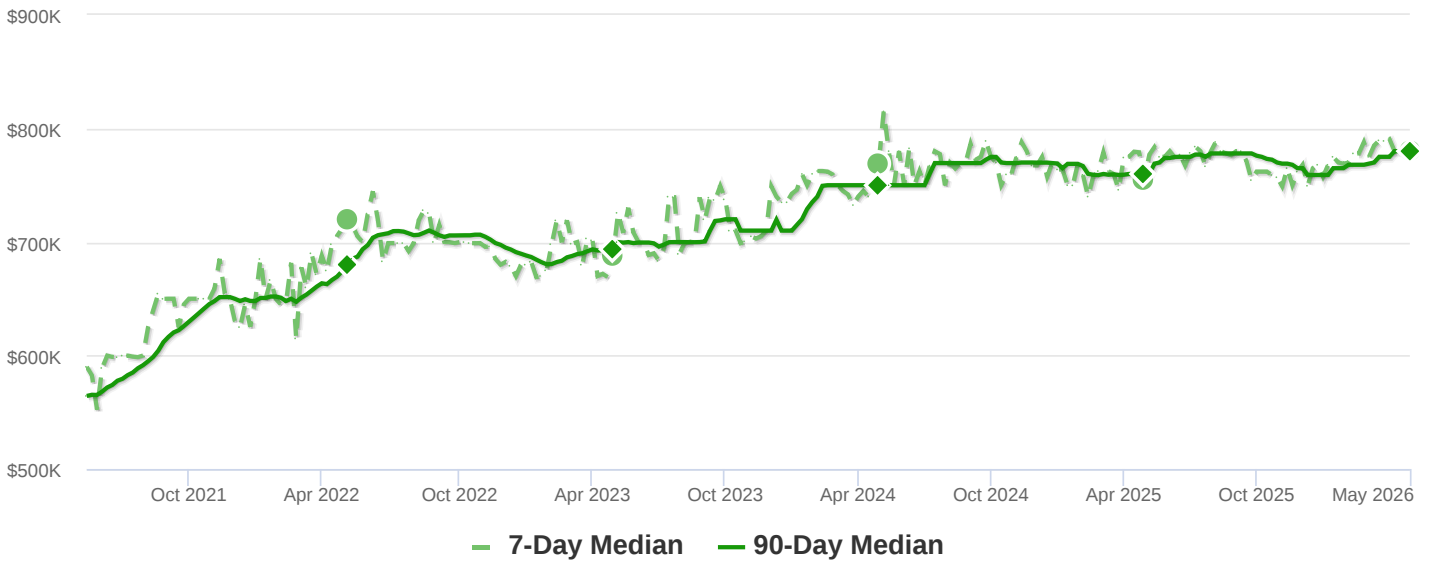
REAL-TIME MARKET PROFILE

Median List Price		\$780,495
Median Price of New Listings		\$780,990
Per Square Foot		\$389
Average Days on Market		64
Median Days on Market		42
Price Decreased		25%
Price Increased		3%
Relisted		4%
Inventory		168
Median Rent		\$3,000
Market Action		43

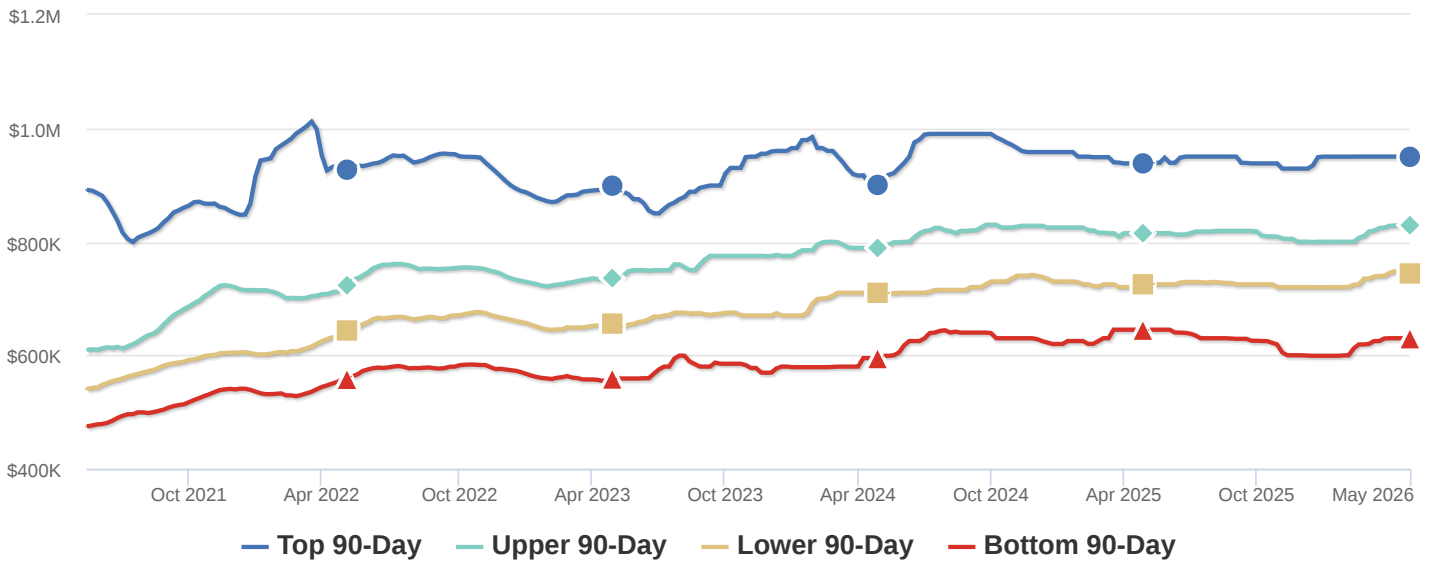
Slight Seller's Advantage

MEDIAN LIST PRICE

The market appears to be hovering around this plateau. Look for a persistent change in the Market Action Index before we see prices deviate from these levels.

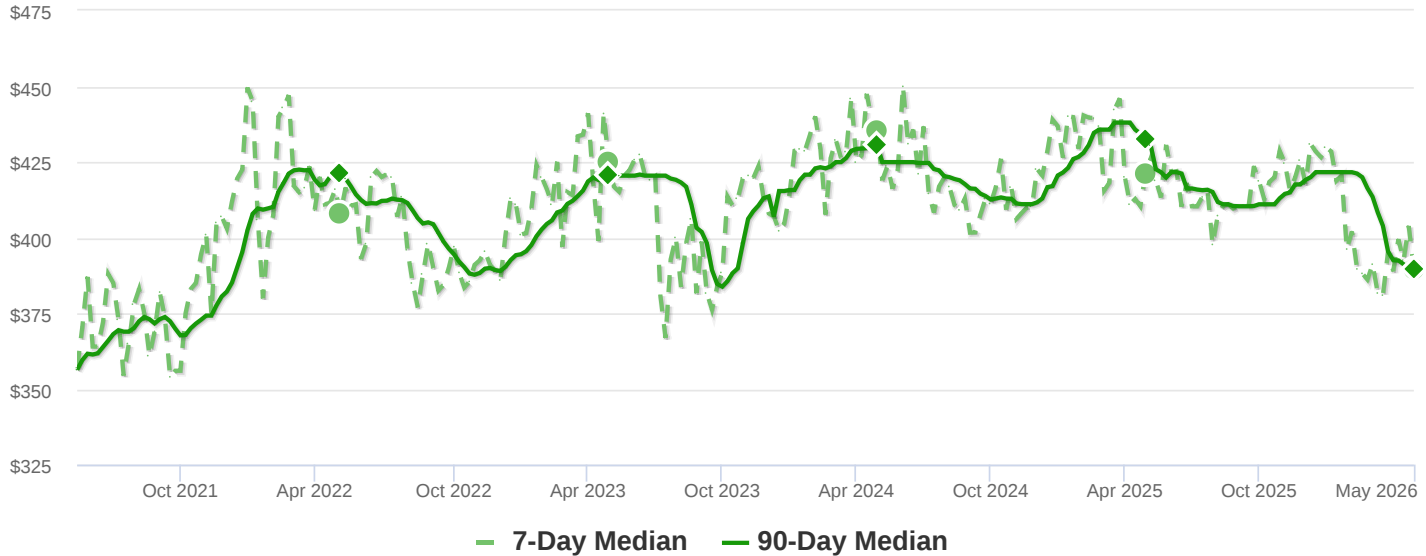


SEGMENTS



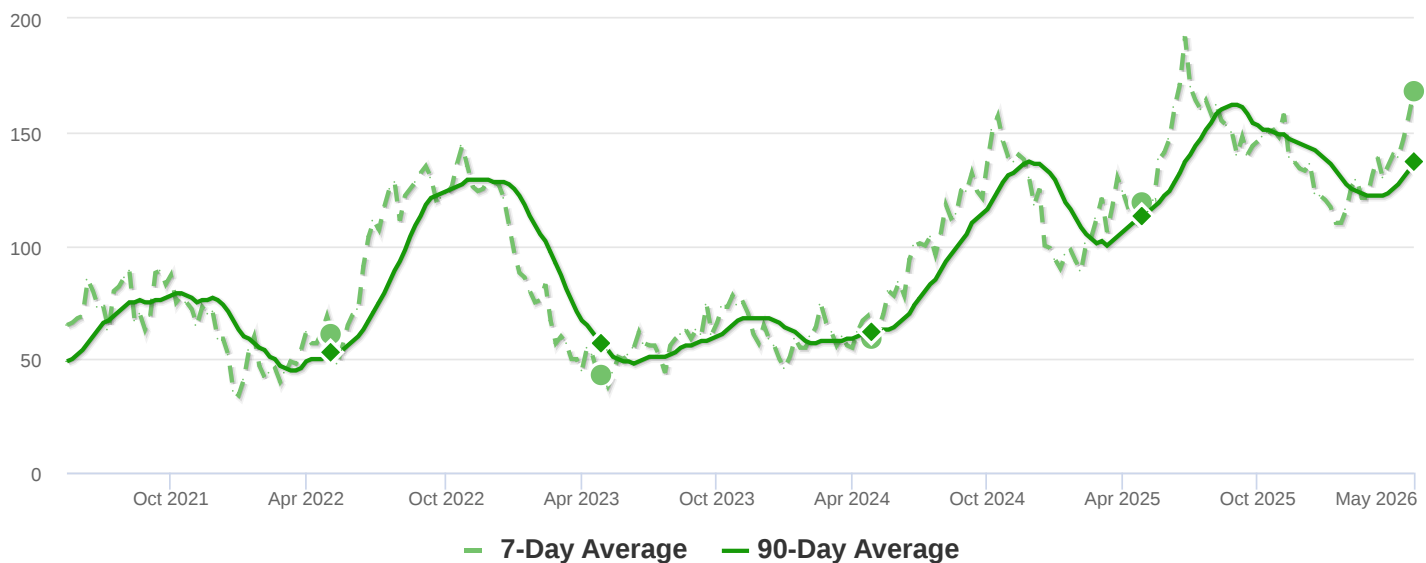
PRICE PER SQUARE FOOT

The market plateau is seen across the price and value. The price per square foot and median list price have both been reasonably stagnant. Watch the Market Action Index for persistent changes as a leading indicator before the market moves from these levels.



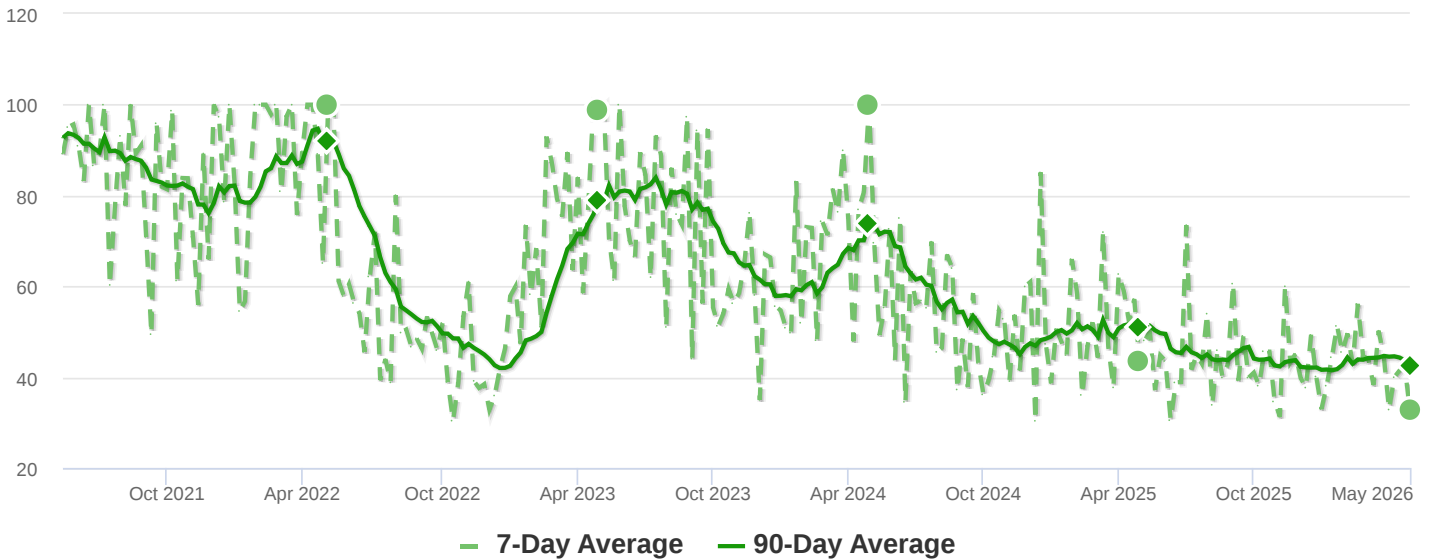
INVENTORY

Inventory has been climbing lately. Note that rising inventory alone does not signal a weakening market. Look to the Market Action Index and Days on Market trends to gauge whether buyer interest is keeping up with available supply.

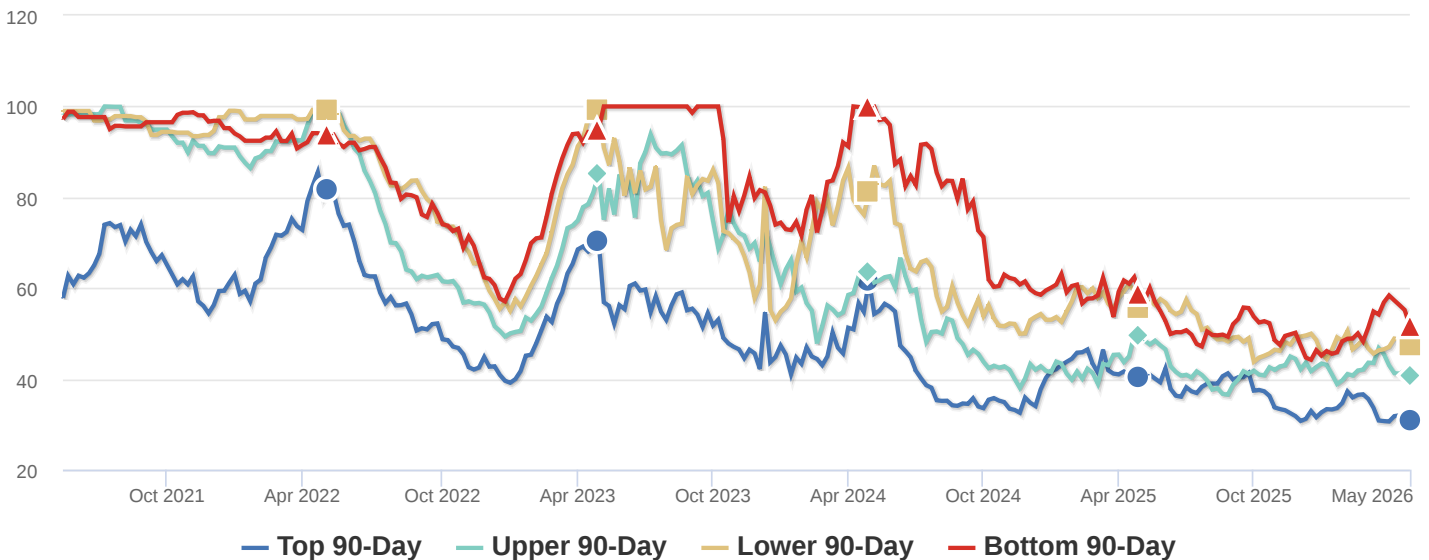


MARKET ACTION INDEX

The market has been cooling over time and prices plateaued for a while. Despite the consistent decrease in MAI, we're in the Seller's zone. Watch for changes in MAI. If the MAI resumes its climb, prices will likely follow suit. If the MAI drops consistently or falls into the Buyer's zone, watch for downward pressure on prices.

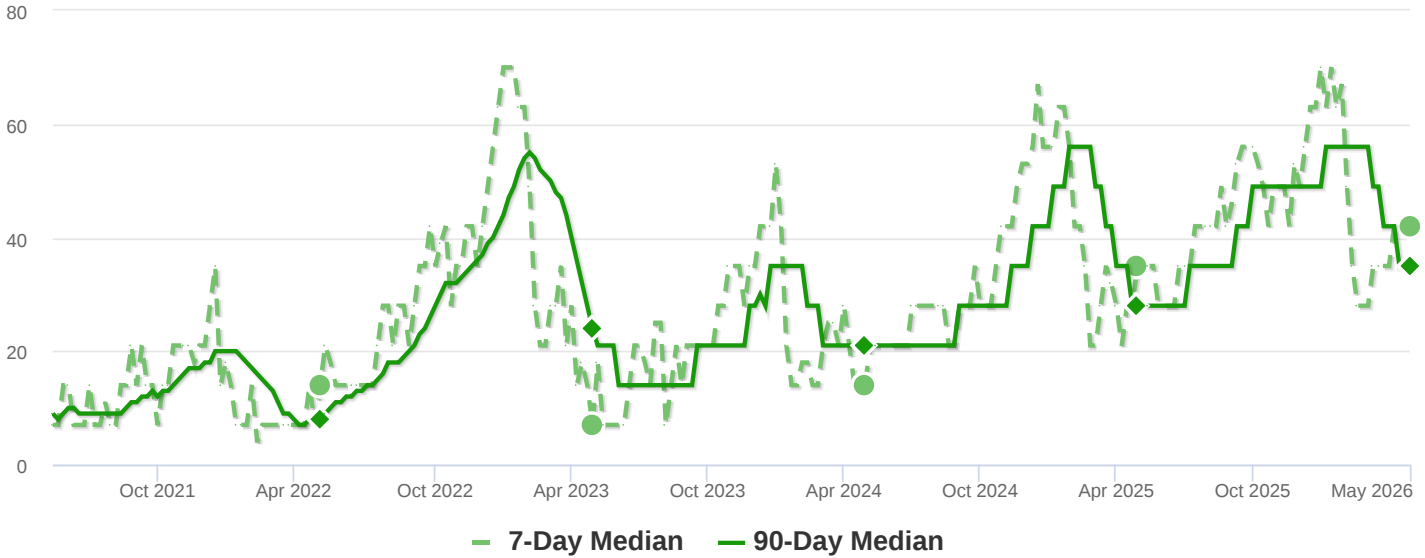


MARKET ACTION SEGMENTS



MEDIAN DAYS ON MARKET (DOM)

The properties have been on the market for an average of 64 days. Half of the listings have come newly on the market in the past 42 or so days. Watch the 90-day DOM trend for signals of a changing market.



SEGMENTS

It is not uncommon for the higher priced homes in an area to take longer to sell than those in the lower quartiles.

