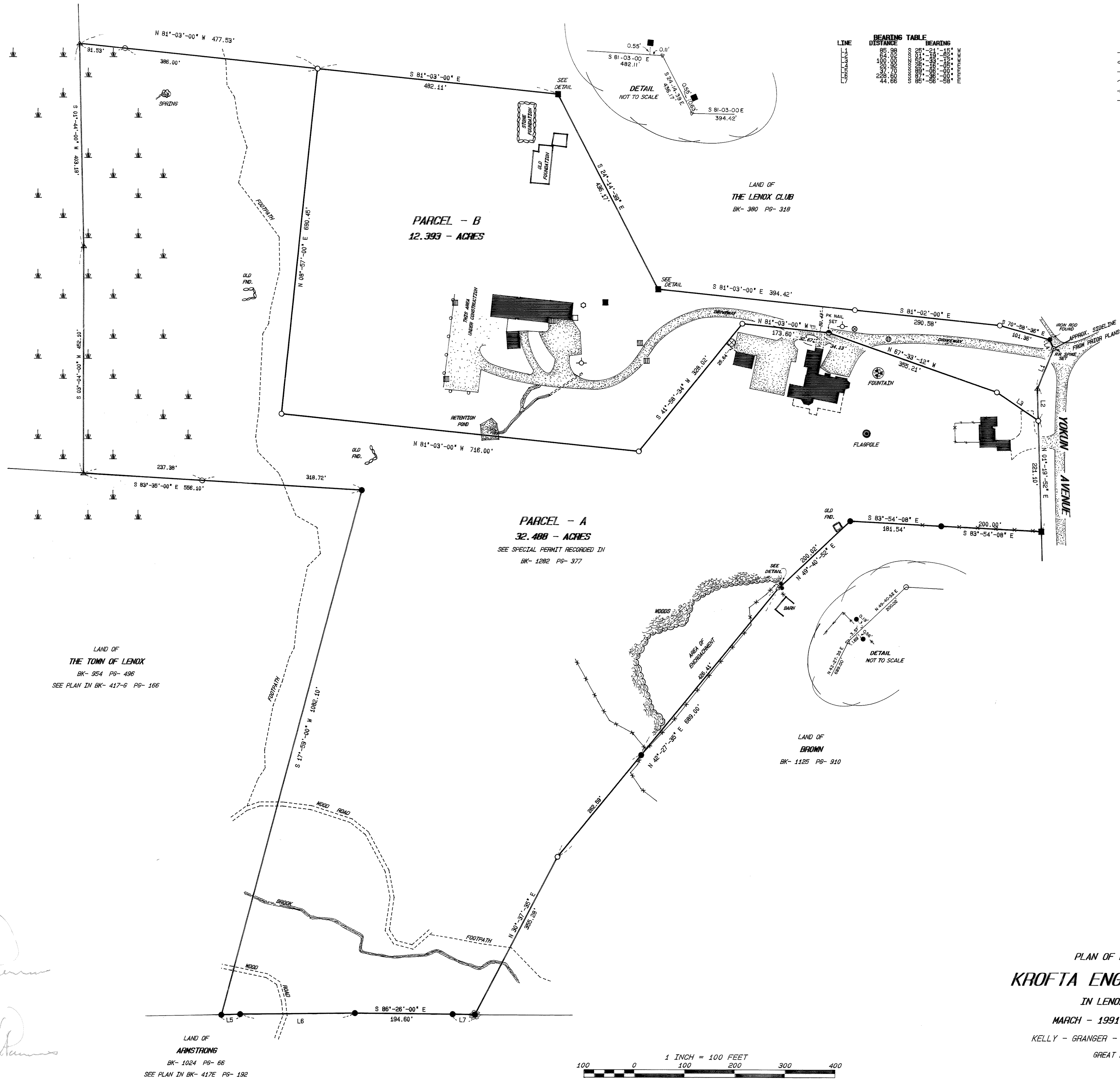


APR 12 12 00 PM '91  
 28.5 3  
 COUNTY OF BERKSHIRE  
 MIDDLE DISTRICT REGISTRY OF DEEDS  
 PLAN RECEIVED AND FILED FOR RECORD  
 April 12, 1991 at 12:00 P.M.  
 IN DRAWER Plat C-158  
 SEE INSTRUMENT RECORDED IN  
 BOOK 1325, PAGE 173  
 REGISTER  
 Mary H. O'Brien  
 FOR REGISTRY USE ONLY

BOTH PARCELS ARE SUBJECT TO AND WITH THE BENEFIT OF ALL RIGHTS RESTRICTIONS, CONDITIONS, EASEMENTS, LEASES, ENCUMBRANCES AND APPURTENANCES OF RECORD.  
 PLANNING BOARD ENDORSEMENT DOES NOT IMPLY COMPLIANCE WITH THE MASS. WETLANDS PROTECTION ACT.

LOCUS DEEDS  
 BK- 973 P6- 289  
 BK- 1064 P6- 163  
 BK- 1070 P6- 60

LAND OF  
 THE TRUSTEES OF THE  
 SPRAGUE FAMILY NOMINEE TRUST - 1974  
 BK- 947 P6- 1020



LINE	DISTANCE	BEARING
1	185.96	S 81°-03'-00" E
2	482.11	S 81°-03'-00" E
3	482.11	S 81°-03'-00" E
4	394.42	S 81°-03'-00" E
5	394.42	S 81°-03'-00" E
6	394.42	S 81°-03'-00" E
7	394.42	S 81°-03'-00" E
8	394.42	S 81°-03'-00" E
9	394.42	S 81°-03'-00" E
10	394.42	S 81°-03'-00" E
11	394.42	S 81°-03'-00" E
12	394.42	S 81°-03'-00" E
13	394.42	S 81°-03'-00" E
14	394.42	S 81°-03'-00" E
15	394.42	S 81°-03'-00" E
16	394.42	S 81°-03'-00" E
17	394.42	S 81°-03'-00" E
18	394.42	S 81°-03'-00" E
19	394.42	S 81°-03'-00" E
20	394.42	S 81°-03'-00" E
21	394.42	S 81°-03'-00" E
22	394.42	S 81°-03'-00" E
23	394.42	S 81°-03'-00" E
24	394.42	S 81°-03'-00" E
25	394.42	S 81°-03'-00" E
26	394.42	S 81°-03'-00" E
27	394.42	S 81°-03'-00" E
28	394.42	S 81°-03'-00" E
29	394.42	S 81°-03'-00" E
30	394.42	S 81°-03'-00" E
31	394.42	S 81°-03'-00" E
32	394.42	S 81°-03'-00" E
33	394.42	S 81°-03'-00" E
34	394.42	S 81°-03'-00" E
35	394.42	S 81°-03'-00" E
36	394.42	S 81°-03'-00" E
37	394.42	S 81°-03'-00" E
38	394.42	S 81°-03'-00" E
39	394.42	S 81°-03'-00" E
40	394.42	S 81°-03'-00" E
41	394.42	S 81°-03'-00" E
42	394.42	S 81°-03'-00" E
43	394.42	S 81°-03'-00" E
44	394.42	S 81°-03'-00" E
45	394.42	S 81°-03'-00" E
46	394.42	S 81°-03'-00" E
47	394.42	S 81°-03'-00" E
48	394.42	S 81°-03'-00" E
49	394.42	S 81°-03'-00" E
50	394.42	S 81°-03'-00" E
51	394.42	S 81°-03'-00" E
52	394.42	S 81°-03'-00" E
53	394.42	S 81°-03'-00" E
54	394.42	S 81°-03'-00" E
55	394.42	S 81°-03'-00" E
56	394.42	S 81°-03'-00" E
57	394.42	S 81°-03'-00" E
58	394.42	S 81°-03'-00" E
59	394.42	S 81°-03'-00" E
60	394.42	S 81°-03'-00" E
61	394.42	S 81°-03'-00" E
62	394.42	S 81°-03'-00" E
63	394.42	S 81°-03'-00" E
64	394.42	S 81°-03'-00" E
65	394.42	S 81°-03'-00" E
66	394.42	S 81°-03'-00" E
67	394.42	S 81°-03'-00" E
68	394.42	S 81°-03'-00" E
69	394.42	S 81°-03'-00" E
70	394.42	S 81°-03'-00" E
71	394.42	S 81°-03'-00" E
72	394.42	S 81°-03'-00" E
73	394.42	S 81°-03'-00" E
74	394.42	S 81°-03'-00" E
75	394.42	S 81°-03'-00" E
76	394.42	S 81°-03'-00" E
77	394.42	S 81°-03'-00" E
78	394.42	S 81°-03'-00" E
79	394.42	S 81°-03'-00" E
80	394.42	S 81°-03'-00" E
81	394.42	S 81°-03'-00" E
82	394.42	S 81°-03'-00" E
83	394.42	S 81°-03'-00" E
84	394.42	S 81°-03'-00" E
85	394.42	S 81°-03'-00" E
86	394.42	S 81°-03'-00" E
87	394.42	S 81°-03'-00" E
88	394.42	S 81°-03'-00" E
89	394.42	S 81°-03'-00" E
90	394.42	S 81°-03'-00" E
91	394.42	S 81°-03'-00" E
92	394.42	S 81°-03'-00" E
93	394.42	S 81°-03'-00" E
94	394.42	S 81°-03'-00" E
95	394.42	S 81°-03'-00" E
96	394.42	S 81°-03'-00" E
97	394.42	S 81°-03'-00" E
98	394.42	S 81°-03'-00" E
99	394.42	S 81°-03'-00" E
100	394.42	S 81°-03'-00" E

- LEGEND**
- GUARD RAIL
  - STONE WALL
  - WOOD ROAD
  - EDGE OF WOODS
  - FENCE
  - FOOT PATH
  - MANHOLE
  - ⊗ TELEPHONE BOX
  - ⊕ WATER VALVE
  - ⊞ CATCH BASIN
  - ⊠ ELECTRIC BOX
  - ⊡ EXISTING HYDRANT
  - WELL
  - SPRING
  - FOUNTAIN
  - FLAG POLE
  - MONUMENT FOUND
  - △ POINT COMPUTED
  - IRON PIPE TO BE SET
  - IRON PIPE FOUND

APPROVAL NOT REQUIRED UNDER THE  
 SUBDIVISION CONTROL LAW  
 LENOX PLANNING BOARD  
 Chairman  
 Vice Chairman  
 Members

*Charles M. Parsons*  
 I HEREBY REPORT THAT THIS PLAN HAS BEEN PREPARED IN CONFORMITY WITH THE RULES AND REGULATIONS OF THE REGISTERS OF DEEDS OF THE COMMONWEALTH OF MASSACHUSETTS.  
 SIGNED: *Charles M. Parsons*  
 PROFESSIONAL LAND SURVEYOR

PLAN OF LAND SURVEYED FOR  
**KROFTA ENGINEERING CORP.**  
 IN LENOX, MASSACHUSETTS  
 MARCH - 1991 SCALE 1" = 100'  
 KELLY - GRANGER - PARSONS AND ASSOCIATES INC.  
 GREAT BARRINGTON, MASS.

