

🛏 4

🚗 2.5

🏠 2,378

3,258 SF

\$758,000

930 Langeburg St, Santa Rosa, California

WESTSIDE CHARM AT SONOMA COURTSIDE VILLAGE



DESCRIPTION

Enjoy convenience and community in this 2001-built home, perfectly situated for an easy stroll down Doubles Drive to Village Bakery. This home features an open-concept layout, a large upstairs primary suite, and a backyard oasis complete with a flagstone patio and soothing water feature. Plus, you'll benefit from the energy efficiency and fantastic cost savings of owned solar. Located in a peaceful PUD with \$57 monthly dues, you'll enjoy beautifully maintained green spaces and walkways right outside your door.

Positioned between South Wright and Stony Point Road, this home offers unrivaled access to Hwy 12, Sebastopol, and downtown Santa Rosa's Historic Railroad Square. You are minutes from iconic dining at Mitote Food Park and Sazon, with premier shopping at Oliver's and local markets all within a two-mile radius. It is the perfect home base for exploring the best of Sonoma County.

*See original images at to <https://bit.ly/4usuuwT>

WWW.DEREKSTEFAN.REALTOR

Sonoma Coast Living
REAL ESTATE SERVICES

DEREK STEFAN

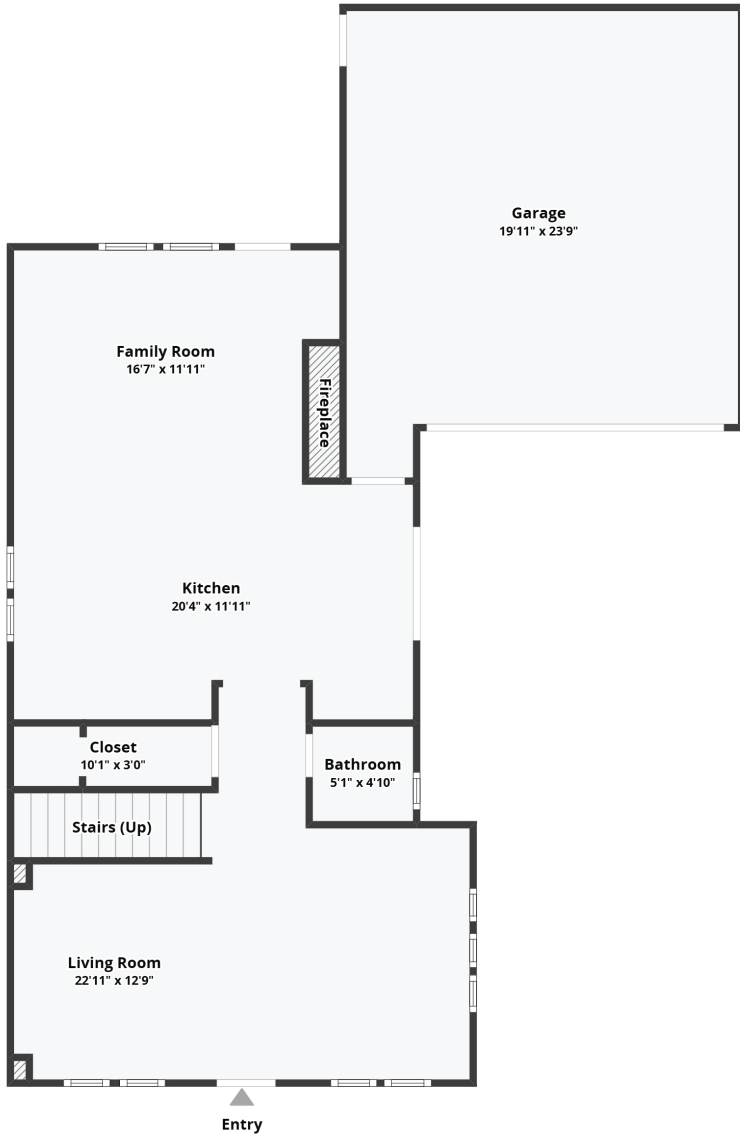
REALTOR® / DRE#02250511

415.336.8651

derek@sonomacoastliving.com

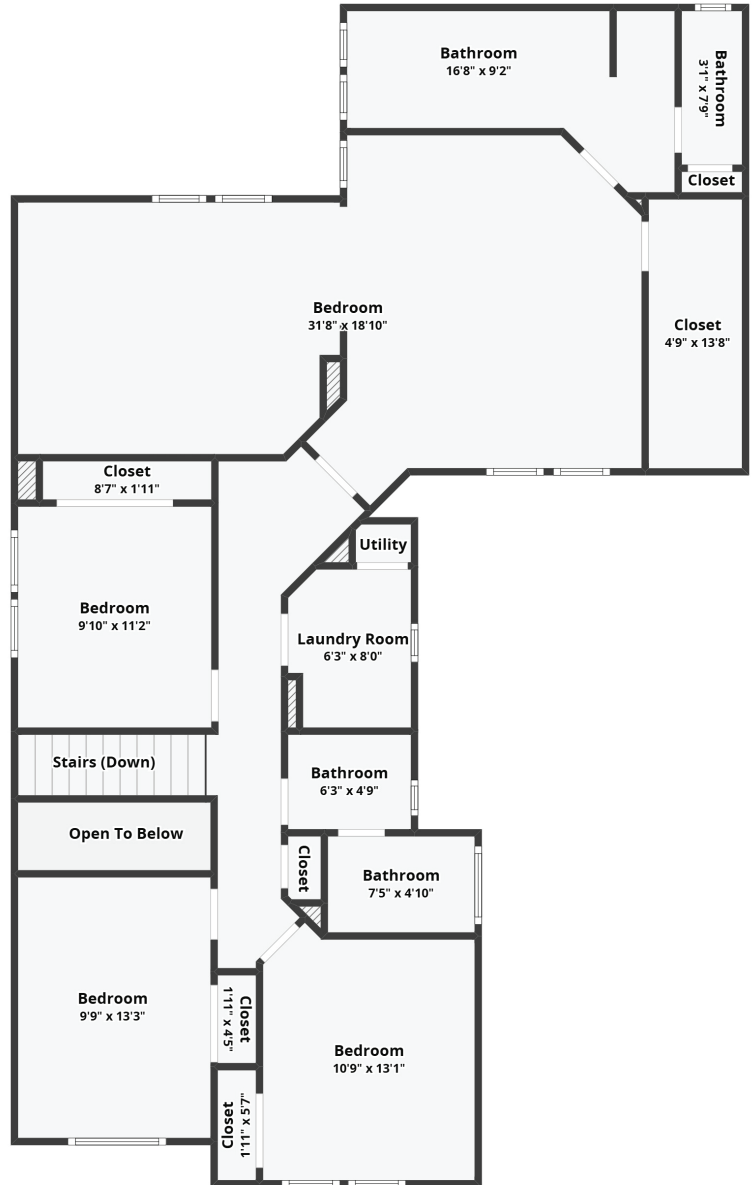


First Floor



All dimensions are approximate and subject to independent verification

Second Floor



All dimensions are approximate and subject to independent verification

WWW.DEREKSTEFAN.REALTOR



DEREK STEFAN
REALTOR® / DRE#02250511
415.336.8651
derek@sonomacoastliving.com

