



2395 WHITE OAK DRIVE NORTHBROOK



2395 WHITE OAK DRIVE  
NORTHBROOK

LP LUXURY  
PORTFOLIO  
INTERNATIONAL

2395WHITEOAKDRIVE.INFO

@properties



CONNIE DORNAN

TOP 1% BROKER NATIONWIDE  
5 TIME CHICAGO MAGAZINE FIVE STAR  
PROFESSIONAL AWARD WINNER  
CLHMS, SFR, E-PRO, QSC, & REO

847.208.1397 mobile

847.998.0200 direct

Connie@ConnieDornan.com



CONNIE DORNAN



**2395 WHITE OAK DRIVE**  
NORTHBROOK



2395 WHITE OAK DRIVE

MAIN LEVEL: LIVING ROOM, DINING ROOM, BUTLER'S PANTRY, GREAT ROOM, KITCHEN, FAMILY ROOM, POWDER ROOM, MUD ROOM, 2ND POWDER ROOM, OFFICE, 5TH BEDROOM ENSUITE

Foyer, Wide plank oak flooring in hexagon pattern, 2 story foyer with volume ceiling, crown molding, tray ceiling, paneled wainscoting, large arched transom window, walk in guest coat closet

Powder Room: Wide plank oak flooring, recessed lighting, crown molding, vanity with marble countertops, Kohler sink, brass gold faucet, Kohler commode

Living Room: Wide plank oak flooring, coffered ceiling in marquise diamond pattern, recessed lighting

Dining Room: Wide plank oak flooring, recessed lighting, double crown molding with arched corners, wall trim detail

Butler's Pantry: Wide plank oak flooring, Taj Mahal quartzite countertop with sink with chrome Brizio plumbing fixture, glass front cabinets, under cabinet lighting, recessed lighting and crown molding, U-Line beverage refrigerator

Great Room: Oak wide plank flooring, coffered ceiling, crown molding, recessed lighting, built in bookshelves, gas fireplace with quartzite surround and wood mantel, wall of windows

Kitchen: Oak wide plank flooring, recessed lighting, Taj Mahal quartzite countertops, soft close shaker custom cabinets with brass gold pulls and crown molding, Sub Zero refrigerator, Wolf microwave, Wolf double oven with 4 burner gas range plus griddle, Best vent hood, built in Wolf espresso machine, 2 Miele dishwashers, refrigerator drawers?, Kohler sink with Brizo brass gold faucet, Kohler prep sink with Brizo brass gold plumbing fixture, built in table with quartzite countertop, walk in pantry with shelving, Sub Zero beverage refrigerator

Family Room: Wide plan oak flooring, recessed lighting, crown molding, 2 French doors to stone covered patio, Gas fireplace with maple surround and wood mantel

2nd Powder Room: Wide plank oak flooring, recessed lighting crown molding, vanity with quartz countertop, Kohler sink with chrome plumbing fixture, 2 petite lampshade sconces, Kohler commode

Office: Wide plank oak flooring, French door entry, recessed lighting, coffered ceiling, crown molding

6th Bedroom ensuite: Oak wide plank flooring, crown molding, recessed lighting, sliding glass door to backyard, walk in closet with organizers

Ensuite Bathroom: Porcelain tile flooring, quartz counter vanity with Kohler sink and chrome plumbing fixtures, shower with porcelain tile surround, bench seating, Kohler rainfall showerhead with handheld shower spray, commode room with Kohler commode

Mud Room/2nd Laundry Room: Ceramic tile flooring, cabinetry with oil rubbed bronze pulls, marble countertop and subway tile backsplash, stainless steel sink with Kohler chrome plumbing fixture, built in lockers with bench seating for 4, 2 storage closets, door to exterior

SECOND LEVEL: LANDING, PRIMARY BATHROOM SUITE, BEDROOM TWO ENSUITE, BEDROOM THREE ENSUITE, BEDROOM FOUR ENSUITE, BEDROOM FIVE ENSUITE, LAUNDRY ROOM, SECOND LEVEL KITCHEN, TERRACE, WALK IN HALL LINEN CLOSET

Landing: Wide plank oak flooring

Primary Bedroom: Wide plank oak flooring, double door entry, recessed lighting, crown molding, wall of arched windows, dressing area with full length built in mirror, walk in closet with wide plank oak flooring, custom built in shelving, island with drawers and quartz countertop, closets, recessed lighting and crown molding

Primary Bathroom: Porcelain tile flooring, dual vanities with marble countertops, Kohler sink with chrome plumbing fixture, frosted glass sconces, drawers with chrome pulls, Kohler tub with chrome plumbing fixture, shower with marble surround, bench seating, rainfall showerhead, dual shower heads each with 3 body sprays and handheld spray, separate commode room

2nd Level Kitchen: Wide plank oak flooring, recessed lighting, crown molding, quartzite countertops, porcelain Fisher & Paykel oven, Fisher & Paykel refrigerator, stainless steel franke stink with disposal and gold brass plumbing fixture, subway tile backsplash, white shaker cabinets with gold brass pulls, , Fisher and Paykel dishwasher drawers, Fisher & Paykel 5 burner range, Zephyr vent hood, island with quartzite countertops, built in microwave oven and seating for 4, pantry closet, walk of sliding glass doors to Terrace

2nd Bedroom Ensuite: Wide plank oak flooring, recessed lighting, walk in closet with organizers,

Ensuite Bathrooom: Porcelain tile flooring neutral vanity with quartz countertop, Kohler sink with chrome plumbing fixture, shower with herringbone pattern porcelain tile surround, basket weave tile flooring, Kohler chrome shower sprays, Kohler commode

3rd Bedroom Ensuite: Wide plank oak hardwood flooring, recessed lighting, crown molding, walk in closet with organizers, built in study niche

Ensuite Bathroom: porcelain tile hexagonal pattern flooring, neutral vanity with quartz countertops, Kohler sink and chrome plumbing fixture, shower with subway tile surround and 2 shower sprays

4th Bedroom Ensuite: Wide plank oak flooring, recessed lighting, crown molding, 2 double door closets with organizers.

Ensuite Bathroom: Pebble tile porcelain flooring, neutral vanity with quartz countertop and Kohler sink with chrome pluming fixture, Kohler shower/tub combo with subway tile surround, Kohler commode

5th Bedroom Ensuite: Wide plank oak flooring, recessed lighting, crown molding, walk in closet with organizers

Ensuite Bathroom: Porcelain tile flooring, neutral vanity with quartz countertop, Kohler sink with chrome plumbing fixture, shower with pebble tile flooring, porcelain tile surround, 2 shower sprays

Covered Terrace: Trex flooring, recessed lighting, gas fireplace with with stone surround

Laundry Room: Porcelain tile flooring, recessed lighting, crown molding, marble countertop, sink with Kohler chrome plumbing fixture, subway tile backsplash, soft close cabinetry with oil rubbed bronze handles, storage closet



CONNIE DORNAN

TOP 1% BROKER NATIONWIDE  
5 TIME CHICAGO MAGAZINE FIVE STAR PROFESSIONAL AWARD WINNER  
CLHMS, SFR, E-PRO, QSC, & REO

847.208.1397 mobile | 847.998.0200 direct  
Connie@ConnieDornan.com





2395 WHITE OAK DRIVE

LOWER LEVEL: RECREATION ROOM, GAME ROOM, 7TH BEDROOM, BATHROOM, 8TH BEDROOM, LOWER LEVEL KITCHEN, STORAGE/MECHANICAL, LAUNDRY ROOM

Recreation Room: Tile flooring, recessed lighting, built in bookshelves, gas fireplace with quartzite surround and wood mantle, wet bar with quartz countertop, Shaw's sink with Brizo chrome plumbing fixture, glass subway tile surround, Uline beverage refrigerator; wine cellar, sliding glass door to lower level patio

7th Bedroom: Tile flooring, crown molding, recessed lighting, sliding glass door to lower level patio

SemiEnsuite Bathroom: Walk in closet, Tile flooring, quartz countertop vanity with Kohler sink, shower room with subway tile surround, rainfall showerhead plus 2 shower sprays, separate commode room with Kohler commode

Game Room Area: tile flooring, recessed lighting, crown molding, 2 storage closets

8th Bedroom optional: walk in closet with organizers

Laundry Room: Tile flooring, rough in for washer dryer

Kitchenette

Theater Room

ADDITIONAL FEATURES:

- Lutron lighting system
- 400 amp
- Pull down attic
- Slate tile roof
- 2 Bradford White 75 gallon hot water heaters
- American Standard furnaces with Aprilaire humidifier
- Hard wired for Generac generators
- Irrigation system
- 3 patios
- Stone exterior



CONNIE DORNAN

TOP 1% BROKER NATIONWIDE  
5 TIME CHICAGO MAGAZINE FIVE STAR PROFESSIONAL AWARD WINNER  
CLHMS, SFR, E-PRO, QSC, & REO

847.208.1397 mobile | 847.998.0200 direct  
Connie@ConnieDornan.com



FRONT EXTERIOR





FOYER



FOYER



FOYER





LIVING ROOM



LIVING ROOM



LIVING ROOM



DINING ROOM





DINING ROOM



DINING ROOM



BUTLER'S PANTRY



BUTLER'S PANTRY





KITCHEN



KITCHEN



KITCHEN



KITCHEN





KITCHEN



KITCHEN



KITCHEN



KITCHEN





KITCHEN LOUNGE



FAMILY ROOM



FAMILY ROOM



FAMILY ROOM





FAMILY ROOM



OFFICE



OFFICE



POWDER ROOM





STAIR SPIRAL



HALLWAY



UPSTAIRS KITCHEN



UPSTAIRS KITCHEN





UPSTAIRS KITCHEN



UPSTAIRS KITCHEN



VERANDA



VERANDA





VERANDA



VERANDA



PRIMARY BEDROOM



PRIMARY BEDROOM





PRIMARY BEDROOM



PRIMARY BATHROOM



PRIMARY BATHROOM



PRIMARY CLOSET





BEDROOM



BEDROOM



BATHROOM



CLOSET





BEDROOM



CLOSET



BATHROOM



BATHROOM





HALF BATH



LAUNDRY ROOM



BASEMENT STAIRS



GREAT ROOM





GREAT ROOM BAR



GREAT ROOM



GREAT ROOM



BATHROOM





PATIO



BACKYARD PATIO



PATIO



PATIO





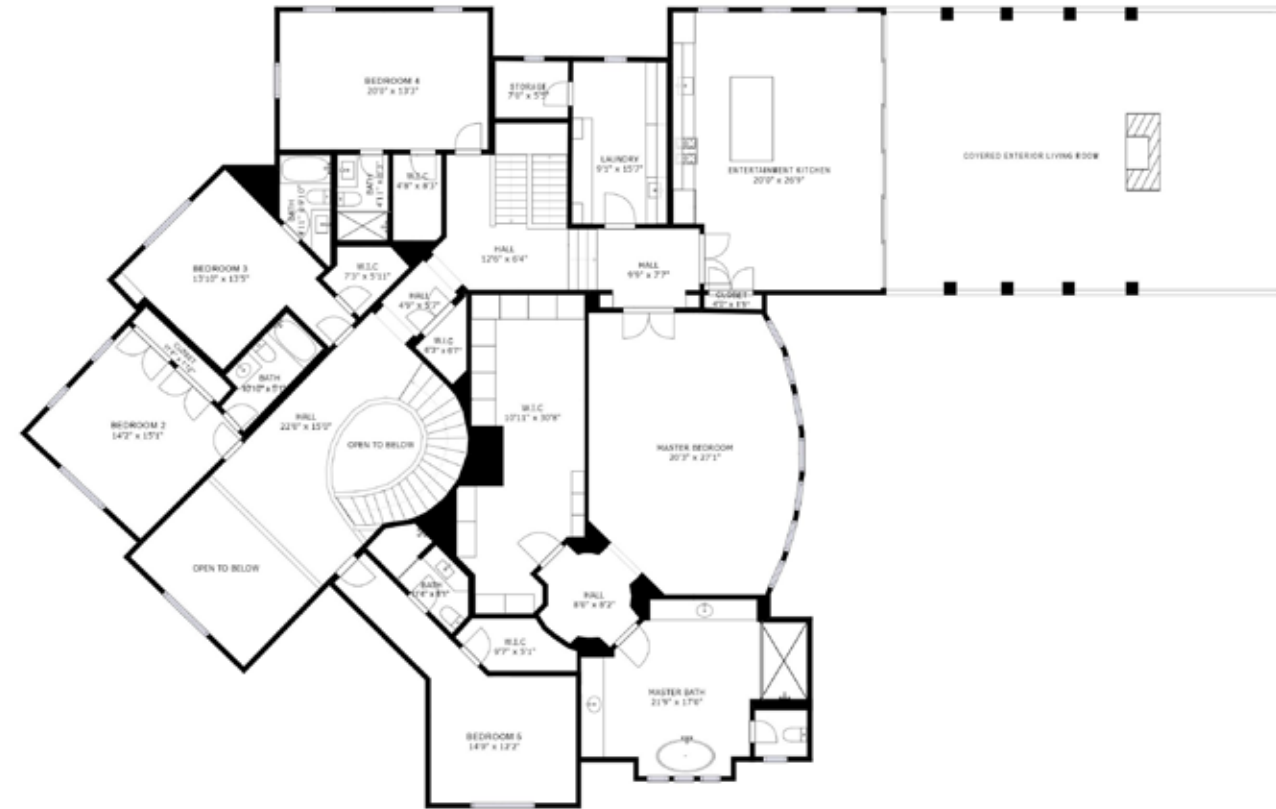
BACKYARD

FIRST LEVEL

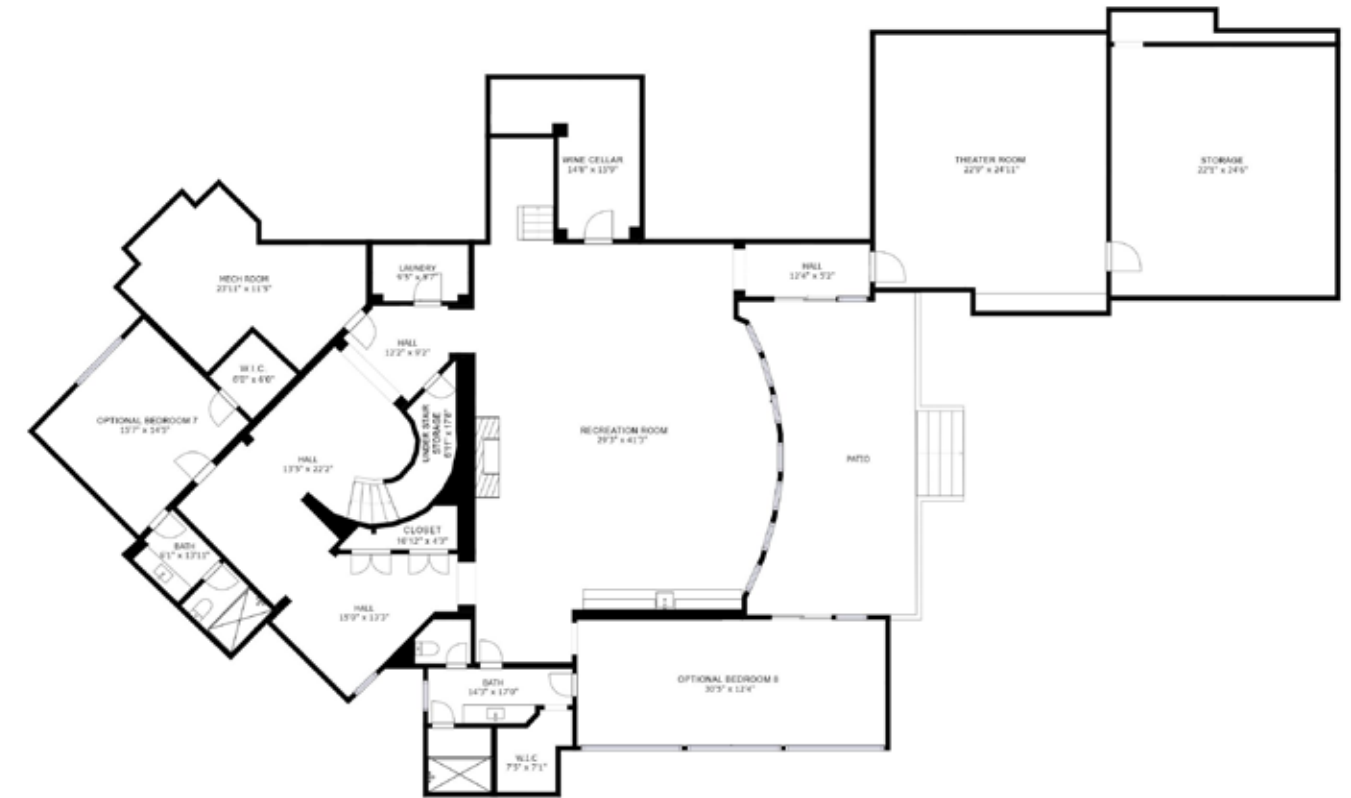




## SECOND LEVEL



LOWER LEVEL







The earliest recorded residents of the Northbrook area were the Potawatomi tribe under Chief Shabbona. In 1833 the tribe ceded their land in Illinois and relocated near Council Bluffs, Iowa. Joel Sterling Sherman and his family bought 159 acres for \$1.25 per acre in the northwest quarter of Section 10. This is the site of the Northbrook Central Business District.

Soon after Mr. Sherman bought that land the area was named Shermerville after Mr. Frederick Schermer who donated the land for the first railroad station (Schermer Station and later Shermer Station). By the 1870's the region was a farm town with well-established brick yards which prospered during the rebuilding that followed the Great Chicago Fire in October of 1871.

In 1901 following a close referendum, the town was incorporated as Shermerville with about 60 homes and 311 residents. By 1921, residents felt that the Shermerville name had a bad reputation. After a contest, the new name of Northbrook, submitted by Edward Landwehr, was adopted as the official name in 1923. At that time there were 500 residents.

Northbrook did not grow rapidly until after World War II when subdivisions of homes were first developed. In 1940 the population was 1,265, but by 1960 the population was 11,635. Another growth spurt was stimulated by the completion in 1963 of a water line to bring Lake Michigan water to Northbrook's new water treatment plant. By 1970 the population had more than doubled to 25,422. The current population is 33,435 (2000 census).



## Welcome To Glenbrook North High School

### GBN AT A GLANCE

#### School Profile

Glenbrook North High School is one of two comprehensive high schools in District 225 and primarily serves the Village of Northbrook, which is situated approximately 22 miles from downtown Chicago.

Built in 1953, Glenbrook North has been expanded and renovated over the years to keep pace with increases in enrollment and the significant expansion of its academic, fine arts and athletic programs. Today's complex, with more than 580,000 square feet, incorporates four courtyards. Special features include the Sheely Center for Performing Arts, fitness center, The Academic Resource Center (ARC), and a new collaborative learning space (The I.D.E.A.) designed to enhance teaching and learning with educational technology.

Glenbrook North offers extensive curricular offerings in English, Math, Science, Social Studies, World Languages, Art, Applied Technology, Business Education, Broadcasting, Music, Physical Education and Family and Consumer Science.

In addition, GBN offers 24 Advanced Placement courses; French, Latin, Hebrew, German, Mandarin Chinese, Russian and Spanish; and the Glenbrook Academy of International Studies in English, Social Studies and World Languages

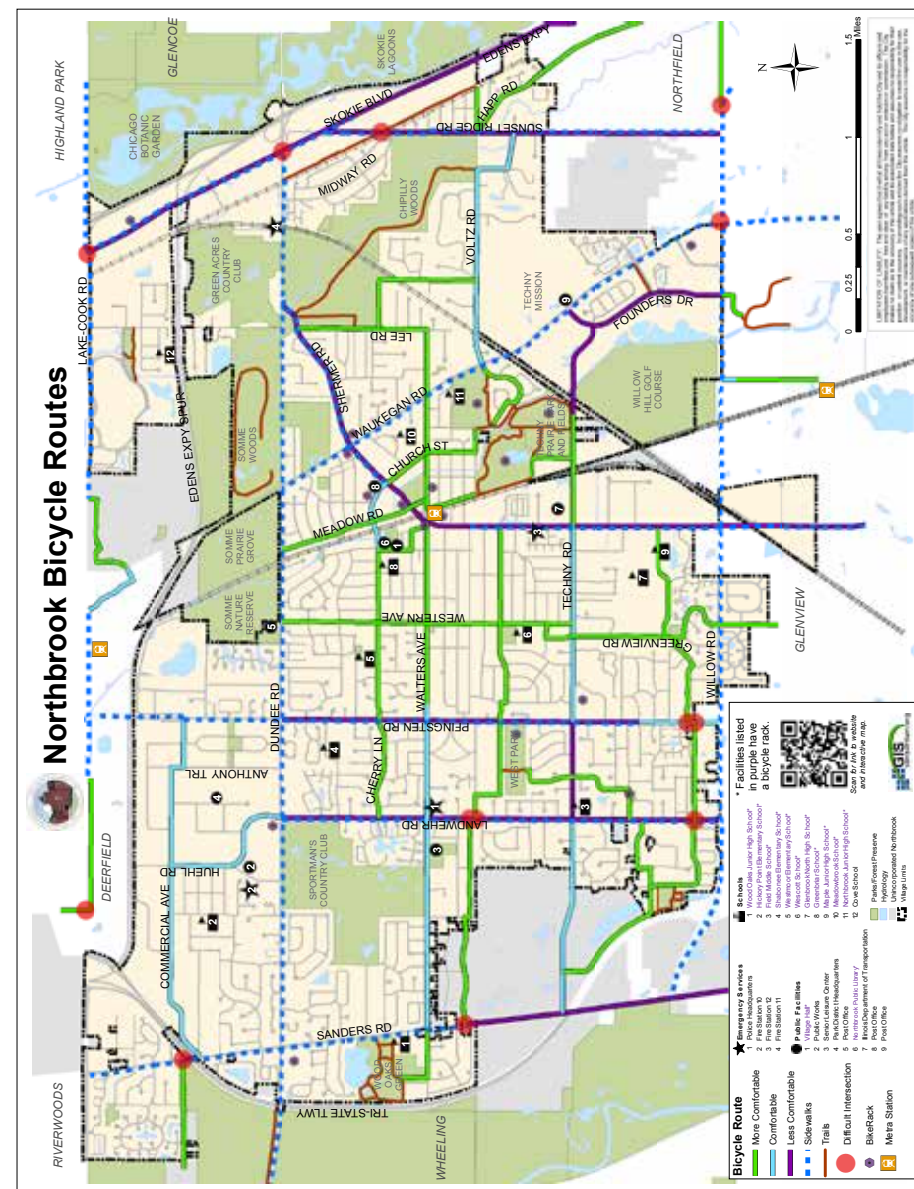
In 2012, 98 percent of graduating students were college bound to 154 different institutions throughout the world. The average ACT composite score is 25.9, and 90 percent of students earned AP scores to qualify for college credit.

There are 195 certified staff members with 90.9 percent holding a master's degree or higher at the school.

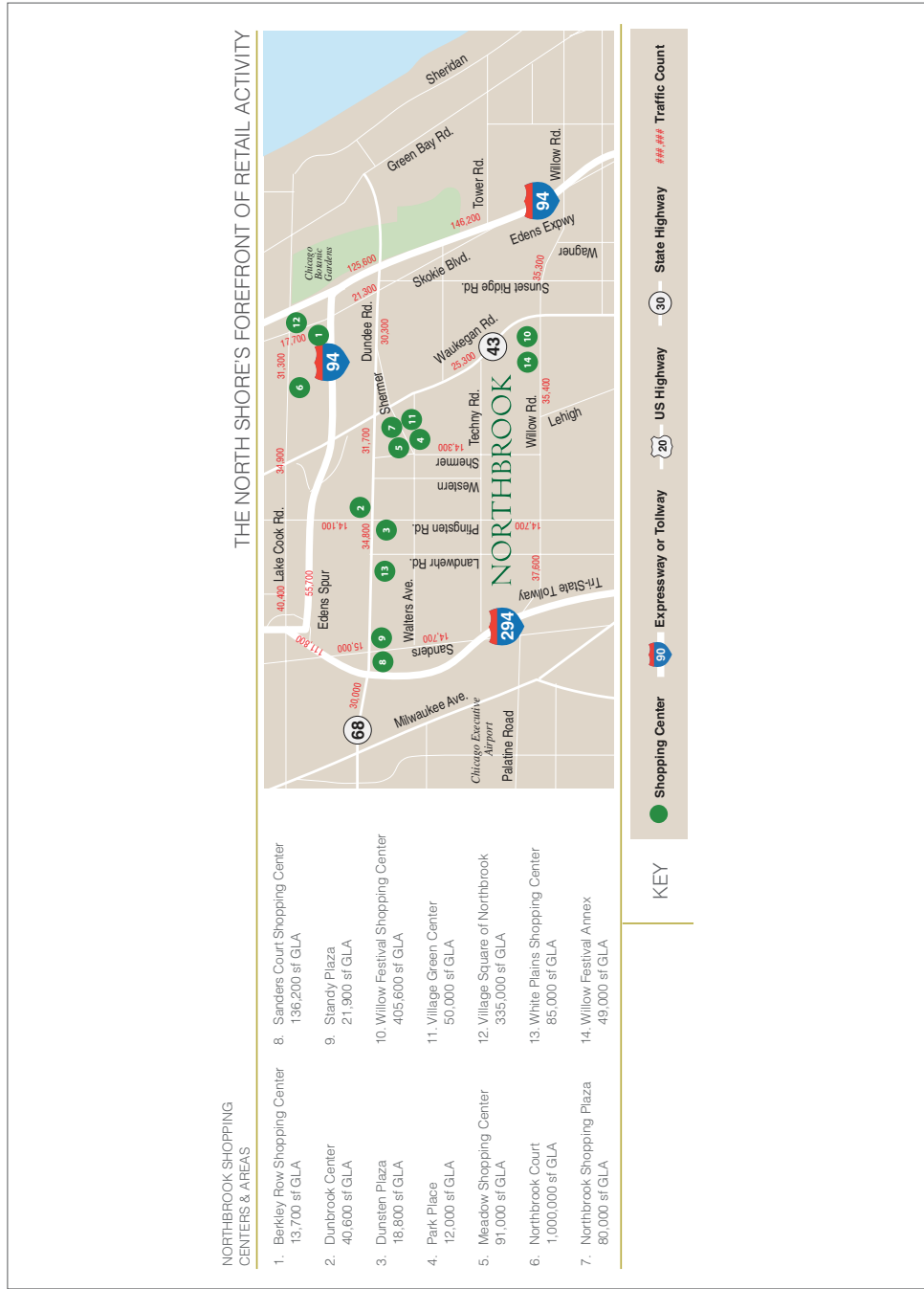




Our Mission is: **Inspiring Minds, Building Futures - Together**







## Public Transportation

Metra

The Milwaukee District North Line serves Northbrook with travel to and from Chicago. There are over 25 daily trips from Northbrook to Chicago. The average travel time is 45 minutes.

## Northbrook Metra Station

1340 Shermer Rd.  
Northbrook, IL  
847-272-0228

## Agent Hours

Monday - Friday  
5:00 AM - 12:40 PM

## Waiting Room Hours

5:00 AM – 8:00 PM

### Station Parking Contact

847-272-4711

Pace

- Route 473 - Highland Park - Northbrook Court
- Route 213 - Green Bay Road
- Route 422 - Linden CTA/Glenview/Northbrook Court
- Route 627 - Discover - Takeda Shuttle Bug
- Route 626 - Skokie Valley Limited
- Route 635 - Lake Cook Shuttle Bug 5

### Driving Distance To

- Downtown Chicago - 25 miles
- O'Hare Airport - 17 miles
- Midway Airport - 33 miles

### Average Driving time to Downtown Chicago

- Downtown Chicago - 40 minutes
- O'Hare Airport - 25 minutes
- Midway Airport - 55 minutes

### Highway Access

- Edens Expressway (I-94)
- Tri-State Tollway (I-294)
- Federal Highway 41
- State Highway 43 & 68

## Airports

- O'Hare International Airport (ORD)
- Midway Airport (MDW)
- Chicago Executive Airport
- Waukegan Regional Airport



@properties®

*Leading* REAL ESTATE  
COMPANIES  
OF THE WORLD®

LP LUXURY  
PORTFOLIO  
INTERNATION