



2009 ROBINCREST LANE GLENVIEW



2009 ROBINCREST LANE  
GLENVIEW



**CONNIE DORNAN**

847.208.1397 mobile  
847.998.0200 direct  
Connie@ConnieDornan.com



CONNIE DORNAN

**2009 ROBINCREST LANE**  
GLENVIEW



## 2009 ROBINCREST LANE

### MAIN LEVEL: FOYER, OFFICE, DINING ROOM, BUTLER'S PANTRY, KITCHEN, FAMILY ROOM, POWDER ROOM, MUD ROOM

Foyer: Hardwood flooring crown molding, paneled wainscoting, recessed lighting

Office: Hardwood flooring, coffered ceiling, recessed lighting, French doors

Dining Room: Hardwood flooring, decorative tray ceiling, recessed lighting, paneled wainscoting

Butler's Pantry: Hardwood flooring, leathered quartzite countertops, Lordear sink with chrome plumbing fixture, Brisas wine refrigerator, glass front cabinets with accent lighting, pantry closet

Kitchen: Hardwood flooring, crown molding, Taj Mahal quartzite countertops, soft close inset cabinetry, Wolf 6 burner with griddle double oven/range, pot filler, Elica vent hood, Bosch cabinet front dishwasher, refuse and recycling drawer, appliance garage, Kohler farmers. Sink with chrome plumbing fixture, Sub Zero cabinet front refrigerator, oversized island with quartzite countertops, hand woven multi tiered ratan and gold lighting fixtures, sharp microwave, seating for 4, walk in pantry with organizers and countertop space

Family Room: Hardwood flooring, coffered ceiling, recessed lighting, gas fireplace with herringbone mosaic tile surround, sliding glass doors to paver patio

Powder Room: Porcelain tile flooring, crown molding, neutral vanity, Kohler commode

Mud Room: Hexagonal shaped tile flooring, bench seating, cubbies, hooks and cabinetry

### SECOND LEVEL: PRIMARY BEDROOM SUITE, BEDROOM TWO ENSUITE, BEDROOM THREE, JACK AND JILL

#### BATHROOM, BEDROOM FOUR, LAUNDRY ROOM, BONUS ROOM, HALL LINEN CLOSET

Primary Bedroom: Hardwood flooring, vaulted ceiling, recessed lighting, 2 walk in closets with organizers

Primary Bathroom: Marble heated flooring, dual vanity with marble countertops chrome plumbing fixtures, lampshade sconces, dual cabinet towers, shower with marble surround, bench seating, large product niche, rainfall showerhead and handheld spray, stand alone Fluorico tub, separate commode room with marble flooring and Kohler commode

Bedroom Two Ensuite: Hardwood flooring, walk in closet with organizers

Ensuite Bathroom: Pebble tile porcelain heated flooring, shower with porcelain tile, product niche, rainfall showerhead, Kohler commode, neutral vanity with Kohler sink and chrome plumbing fixture

Bedroom Three: Hardwood flooring, recessed lighting, walk in closet with organizers

Jack and Jill Bathroom: Penny tile heated porcelain flooring, dual vanity with quartz countertops with chrome plumbing fixtures, separate room with shower/Duravit tub with subway tile surround, product niche, 2 shower sprays and Kohler commode

Bedroom Four: Hardwood flooring, recessed lighting, double door closet

Laundry Room: Porcelain tile flooring, LG washer and dryer, inset cabinetry, quartz countertops, Kraus sink with Grohe chrome plumbing fixture

Bonus Room: Skylights

### BASEMENT: RECREATION ROOM, BEDROOM FIVE, BATHROOM, STORAGE/UTILITY

Recreation Room: Carpeted flooring, recessed lighting, bar with porcelain tile flooring, quartz countertop, Lordear sink with chrome plumbing fixture, Brisas beverage refrigerator, cabinetry and shelves with accent lighting, understair storage closet

Bedroom Five: Carpeted flooring, walk in closet with organizers

Bathroom: Porcelain tile heated flooring, vanity with quartz countertops with chrome plumbing fixtures, shower with penny tile flooring, product niche, rainfall shower head and handheld spray, Kohler commode

Storage Room: Carpeted flooring

#### ADDITIONAL FEATURES AND UPDATES:

- American standard furnace with Aprilaire humidifier
- Bradford White 75 gallon hot water heater
- Sump pump
- Nest Thermostats
- Concrete driveway



**CONNIE DORNAN**

847.208.1397 mobile | 847.998.0200 direct  
Connie@ConnieDornan.com





ENTRY



FOYER



FOYER



OFFICE/DEN



OFFICE/DEN



GREAT ROOM/KITCHEN



GREAT ROOM/KITCHEN



GREAT ROOM/KITCHEN



GREAT ROOM/KITCHEN



GREAT ROOM



GREAT ROOM



KITCHEN



KITCHEN



KITCHEN



KITCHEN



KITCHEN



KITCHEN



PANTRY



WET BAR



POWDER ROOM



MUDROOM



SECOND LEVEL STAIRCASE



SECOND LEVEL LANDING



PRIMARY BEDROOM



PRIMARY WALK-IN CLOSET



PRIMARY BATHROOM



PRIMARY BATHROOM



2ND BEDROOM



2ND BEDROOM



WALK-IN CLOSET



BATHROOM



3RD BEDROOM



3RD BEDROOM



BATHROOM



BATHROOM



4TH BEDROOM



4TH BEDROOM



BONUS ROOM



LAUNDRY ROOM



LOWER LEVEL RECREATION ROOM



LOWER LEVEL RECREATION ROOM



LOWER LEVEL RECREATION ROOM



LOWER LEVEL RECREATION ROOM



LOWER LEVEL RECREATION ROOM



LOWER LEVEL BATHROOM



FRONT VIEW

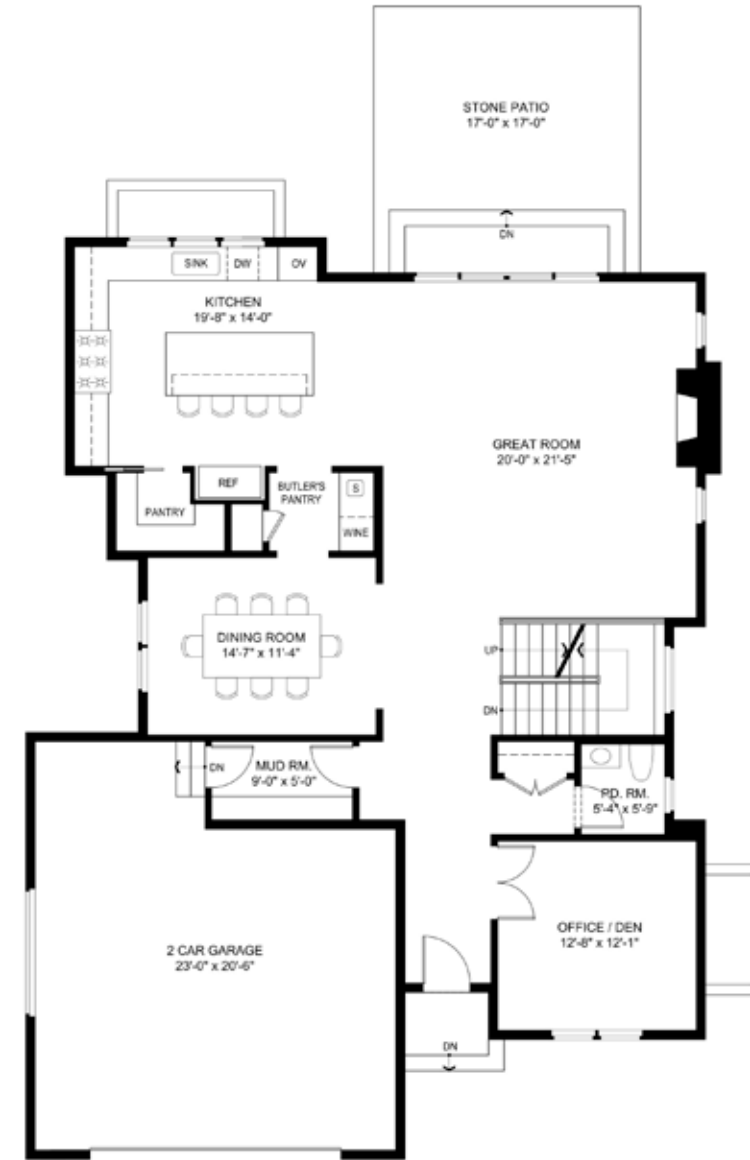


AERIAL VIEW

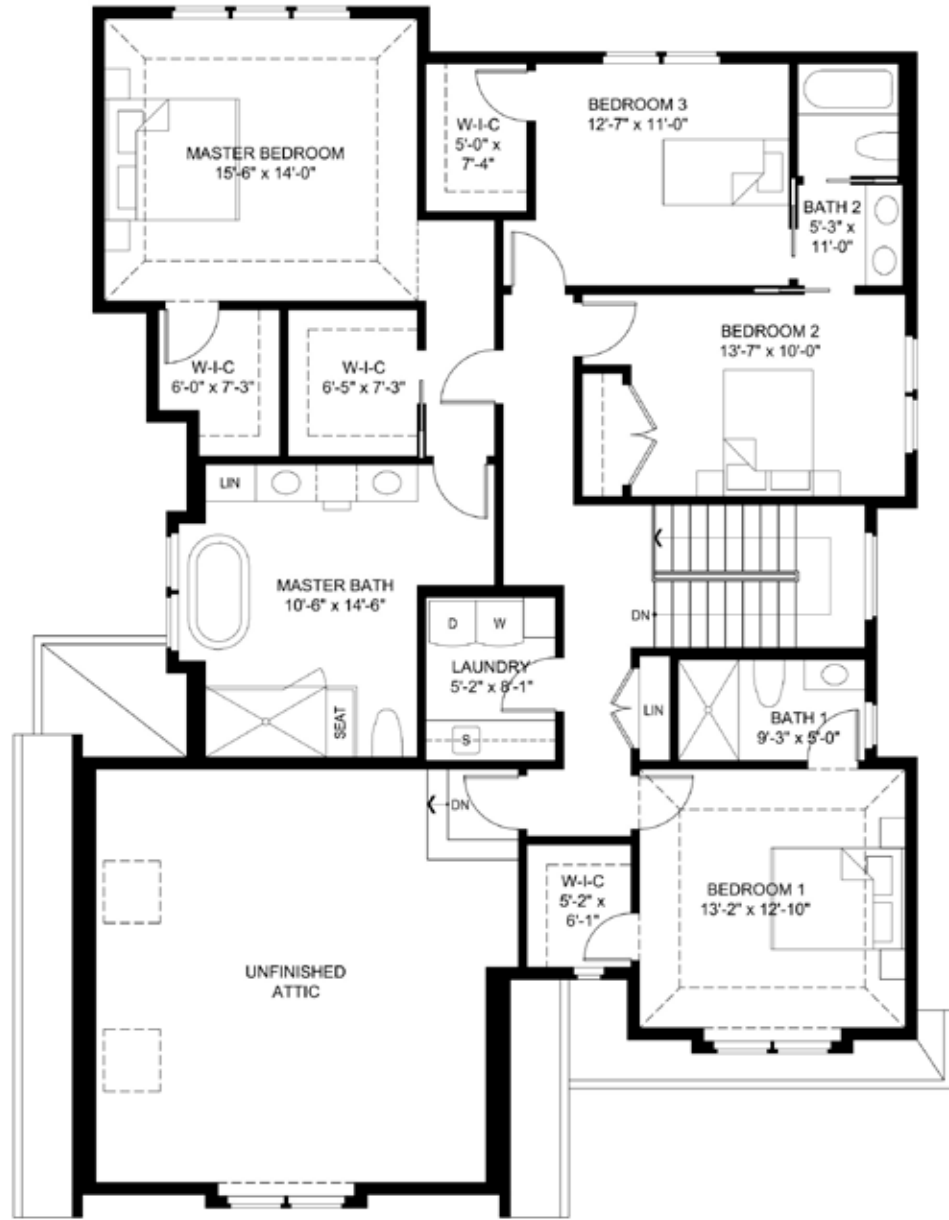


AERIAL VIEW

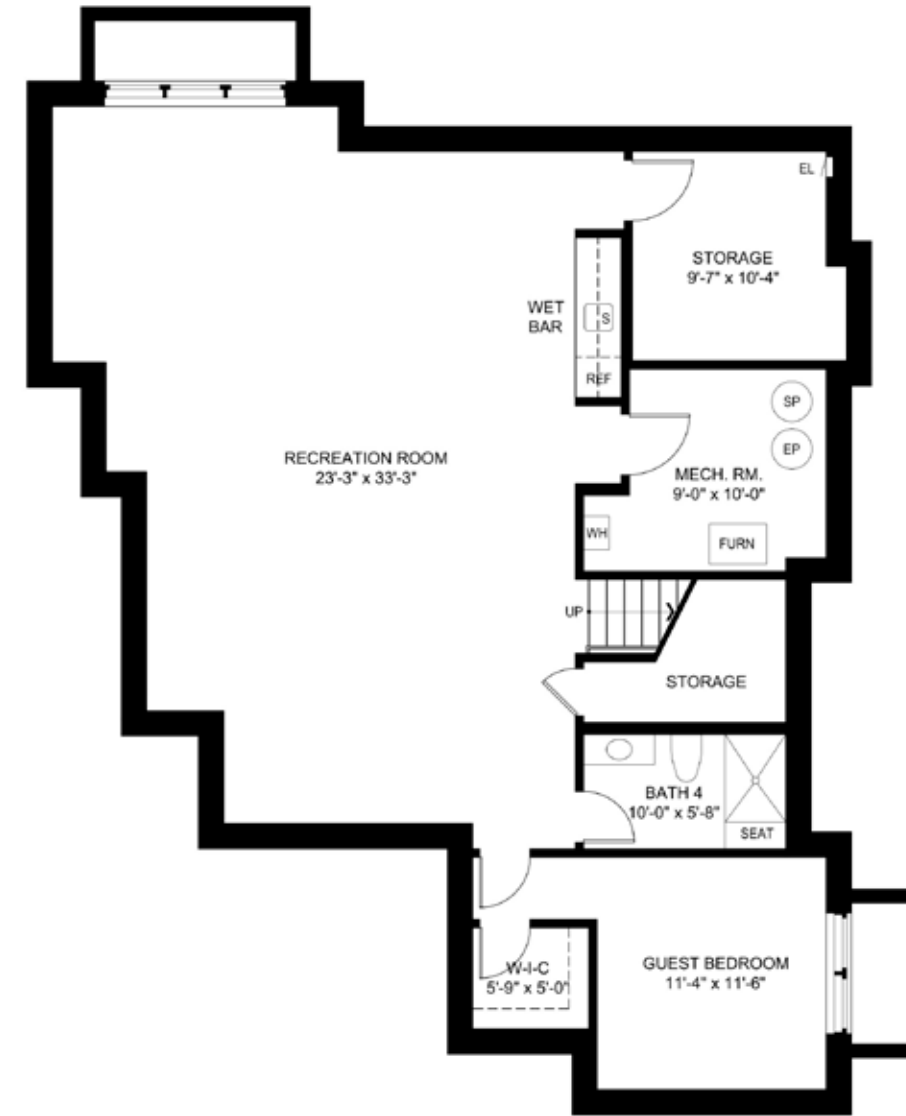
### FIRST LEVEL



SECOND LEVEL



LOWER LEVEL



## ABOUT GLENVIEW

The Village of Glenview had 350 residents when it was incorporated in 1899. Today, the population is almost 45,000. Located in Cook County, the Village's fine amenities and services, excellent schools, 34 parks and playgrounds covering more than 290 acres, numerous options for shopping and dining and proximity to local expressways and commuter trains have made it one of Chicago's premier suburbs -- a vibrant, thriving community that manages growth with success and style.

### History

The entire Northfield Township originally was known as the town of Northfield. There were different names for various areas within the community. The Post Office demanded that an official name be selected, whereupon a special meeting of the villagers was called. Various names were suggested such as Rugenville, Glenvarr, Glendale, Glengrove, Glen Hollow, Oak View, and Glenview. The name Glenview won the majority vote on May 7, 1895. The village was incorporated in 1899. Much of the Glenview area remained farmland but after World War II, developers such as Tom Sullivan began to give the township its current suburban appearance.

### The Park

"The Park" is one of the oldest neighborhoods in the village. Located near the center of Glenview, just south of the Glen development, The Park was established as home to a religious society in 1894 by Hugh Burnham, the first village president and nephew of architect Daniel Burnham. This religious society is based on the writings of Emanuel Swedenborg a scientist and theologian who lived and wrote in the 1700's. In the late 1890s through the turn of the century, New Church members purchased 40 acres of land and built their houses in an oval surrounding a common park area where the church and school were built. Architect Swain Nelson, one of the designers of Lincoln Park, designed the neighborhood.

As part of the New Church service mission to be universally accepted as a guidepost for kindness and character, today, the Glenview New Church Schools are open to many students beyond the congregation and the church has been updated and expanded to accommodate a much larger Sunday service. Despite its new open focus and broadening congregation, the original church in the center and many of the surrounding buildings remain the same today as they were in 1900.

### Naval Air Station

The control tower of the village's former Naval Air Station has been converted to shops as part of The Glen Town Center. Naval Air Station Glenview was a major facility in Glenview for many years. It was the host for a number of squadrons, including the Coast Guard Air/Sea rescue helicopter service for Chicago/Lake Michigan and a squadron of P-3 Orions which had the mission of East Coast antisubmarine warfare. The rationale for basing the squadron there was that so many reserve staff were in the central United States, and it was convenient to base the facility near the staff. As a 1-2 hour checklist had to be executed before scanning the seas, there was actually little dead time in the flight to the coast. The base consisted of 1 million cubic yards (800,000 m<sup>3</sup>) of concrete, 1.5 miles (2.4 km) of runways and 108 U.S. Navy buildings.

### The Glen

In 1995, the base was closed as part of the Base Realignment and Closure military restructuring process. The land was deeded back to Glenview by the U.S. Department of Defense. A reuse plan was completed by the Village of Glenview in 1995 and updated into a master plan by Skidmore, Owings & Merrill in 1998. The village then assumed the role of Master Developer. The 1,121-acre (4.54 km<sup>2</sup>) development was named "The Glen" in 1999. It comprises approximately 15% of the area of Glenview. It contains new homes, offices, and shopping centers, including The Glen Town Center. Among other amenities, it includes a lake, soccer fields, walking and biking trails, two golf courses, Kohl Children's Museum, the Glenview Park District Park Center, Attea Middle School, and the Glen/North Glenview commuter train station.



## Welcome to Glenbrook South

**Our Mission:** Glenbrook South High School is a learning community dedicated to students and committed to quality of thought, word and deed.

Glenbrook South High School School is one of two comprehensive high schools in District 225 and primarily serves the Village of Glenview. Glenbrook South High School is a learning community dedicated to students and committed to quality of thought, word and deed.

Built in 1962, the GBS campus has been expanded and renovated to keep pace with enrollment, academic programs, technology, fine arts and science. Today's complex, with more than 667,000 square feet, spans across 72 acres and provides a learning environment enhanced by natural light, a welcoming atmosphere and a layout that supports academic areas, beauty of design, security, state-of-the art cafeterias and energy conservation.

Special features include a 1,500-seat auditorium, Lyceum, Orchestra, Band room, Choral room, Drama/Dance room, Graphic Design lab, Multi-media labs, Autos lab, Foods lab, Courtyard and Gazebo, Student Activities Center, Radio and TV studios, Greenhouse, Library, Media Centers and the Titan Learning Center.

Glenbrook South offers extensive curricular offerings in English, Math, Science, Art, Social Studies, World Languages, Applied Technology, Music, Business Education, Radio/TV, Driver Education, Physical Education and Family and Consumer Science.

In addition, GBS offers 24 Advanced Placement courses; more than 60 clubs and activities; 29 interscholastic and club sports; American Sign Language, French, German, Japanese, Mandarin Chinese and Spanish; and the Glenbrook Academy of International Studies in English, Social Studies and World Languages.

In 2012, more than 95 percent of graduating students were college bound to 149 different institutions throughout the world. The average ACT composite score is 24.9, and 89 percent of students earned AP scores to qualify for college credit.



K-2 grades

2941 Linneman St, Glenview, IL 60025

A diverse learning community of children, teachers and parents working together to provide a challenging and nurturing environment that empowers each student to •Achieve one's maximum potential •Become a lifelong learner •Demonstrate positive character traits •Develop a positive self-image



3-5 grades

2000 Harrison Street, Glenview, IL 60025

**District Mission Statement**

The Glenview Public Schools, in collaboration with the parents and community, shall empower children to be responsible learners and decision makers in a changing society.

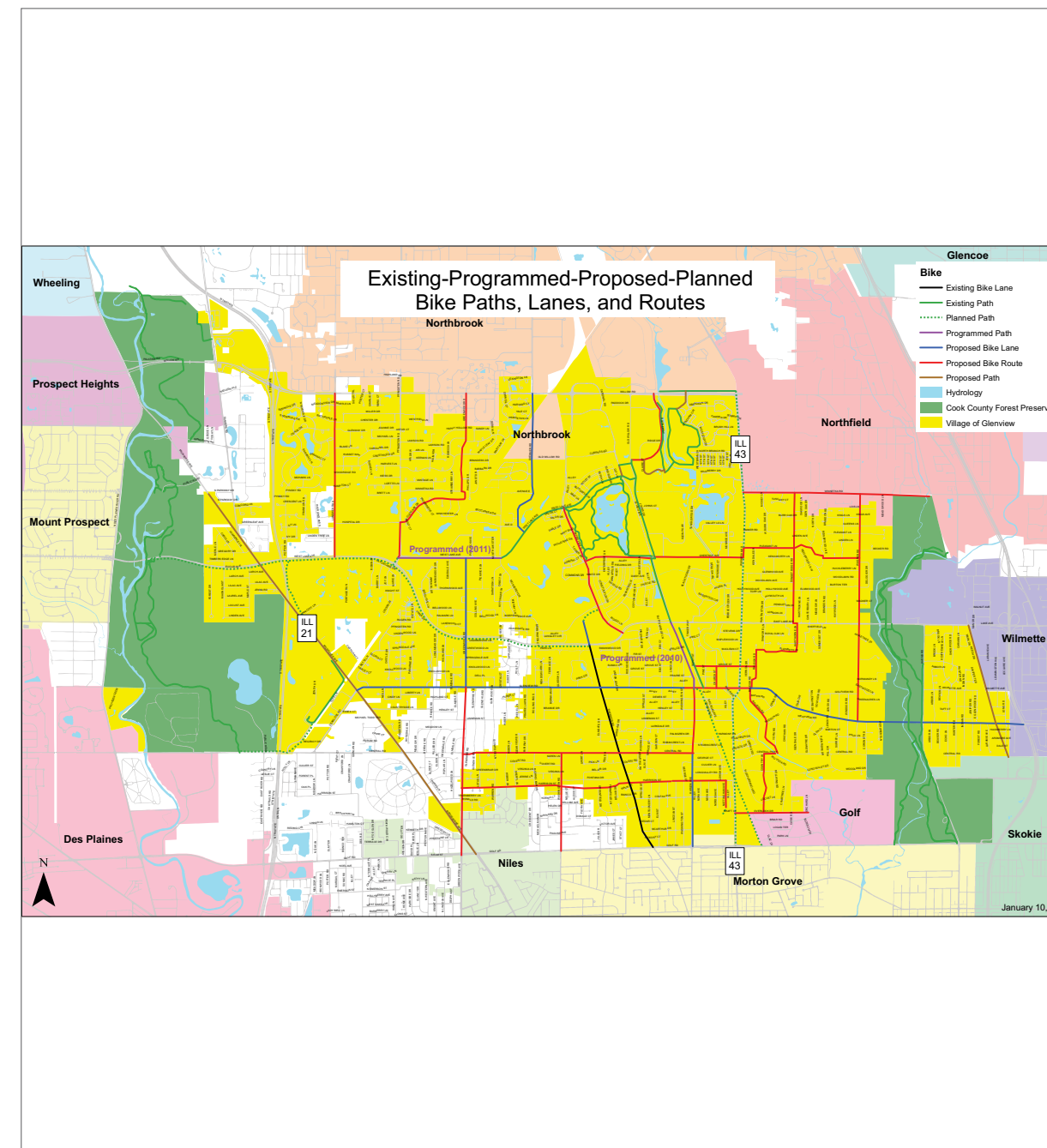


2701 Central Rd. Glenview, IL 60025

Springman Middle School is a high-performing school that is responsive to the developmental needs of young adolescents as they make the transition between childhood and adolescence. While holding high expectations for all students' academic achievement, teachers are careful to see that instructional strategies are appropriate to adolescent learners.

As a Middle School, Springman is characterized by a(n)

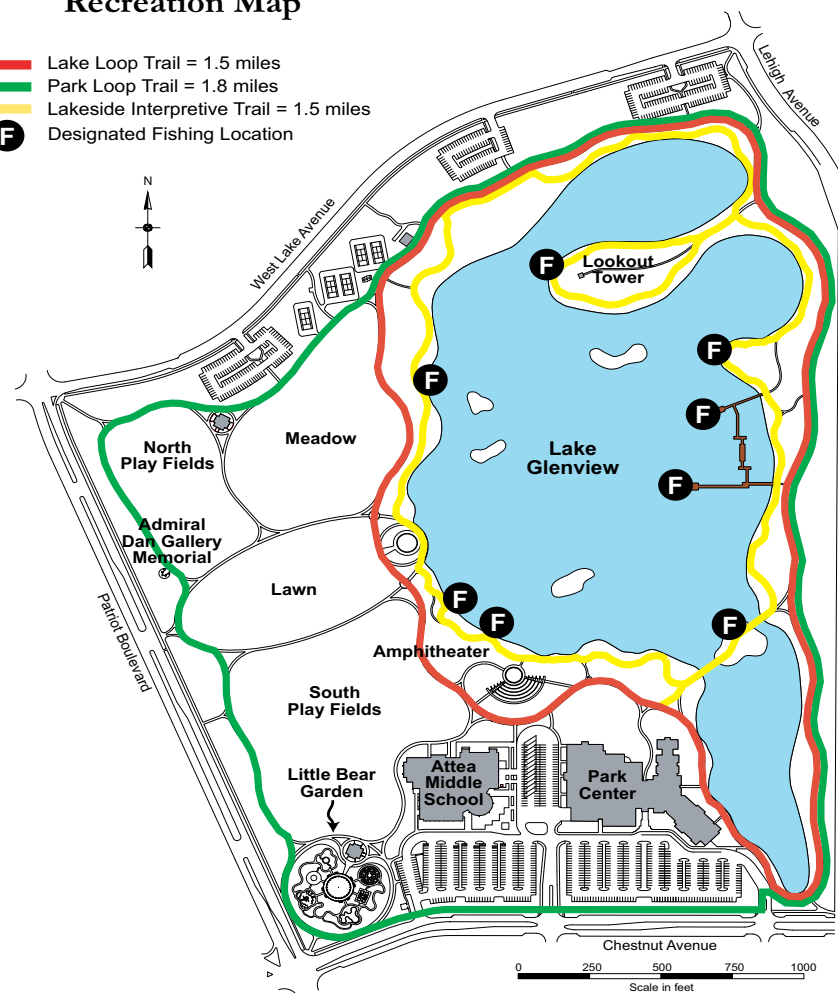
- philosophy based on the unique needs and characteristics of the young adolescent;
- team of educators knowledgeable about and committed to the young adolescent;
- interdisciplinary team organization;
- flexible block schedule;
- positive and collaborative school climate;
- physical plant where teams are housed together for classes and large areas for full team sessions;
- emphasis on tech use of higher-order thinking skills and hands-on instructional strategies; and
- commitment to regular involvement of families in the education of young adolescents by keeping them informed of student progress and school programs and by giving them meaningful roles in the schooling process.



# GALLERY PARK

## Recreation Map

- Lake Loop Trail = 1.5 miles
- Park Loop Trail = 1.8 miles
- Lakeside Interpretive Trail = 1.5 miles
- F** Designated Fishing Location



### PARK RULES:

Park is open at sunrise and closes at 11:00 pm. The water spray area at Little Bear Garden is open generally from Memorial Day to Labor Day.  
 Alcohol is prohibited.  
 No boating, swimming or ice skating.  
 Grills are not permitted.  
 Do not feed the geese.

By ordinance of the Village of Glenview, a dog must be on a leash on any sidewalk, street or public place (Ord. No. 1402). No dogs are permitted in Little Bear Garden. Fines begin at \$100 (Ord. No. 4174).

### FISHING RULES:

A valid state fishing license is required.  
 No boating, swimming or ice skating.  
 Catch and release fishing is strictly enforced. Carp are the exception and may be taken.  
 Fish in designated areas only.  
 Piers are handicapped accessible.  
 Fishing Hours: 5 am-8 pm  
 Alcohol is prohibited.  
 Season: May 15-November 15  
 Emptying of bait buckets in lake is prohibited.  
 Spear, gig, and bow and arrow fishing are prohibited.  
 One pole limit per person.

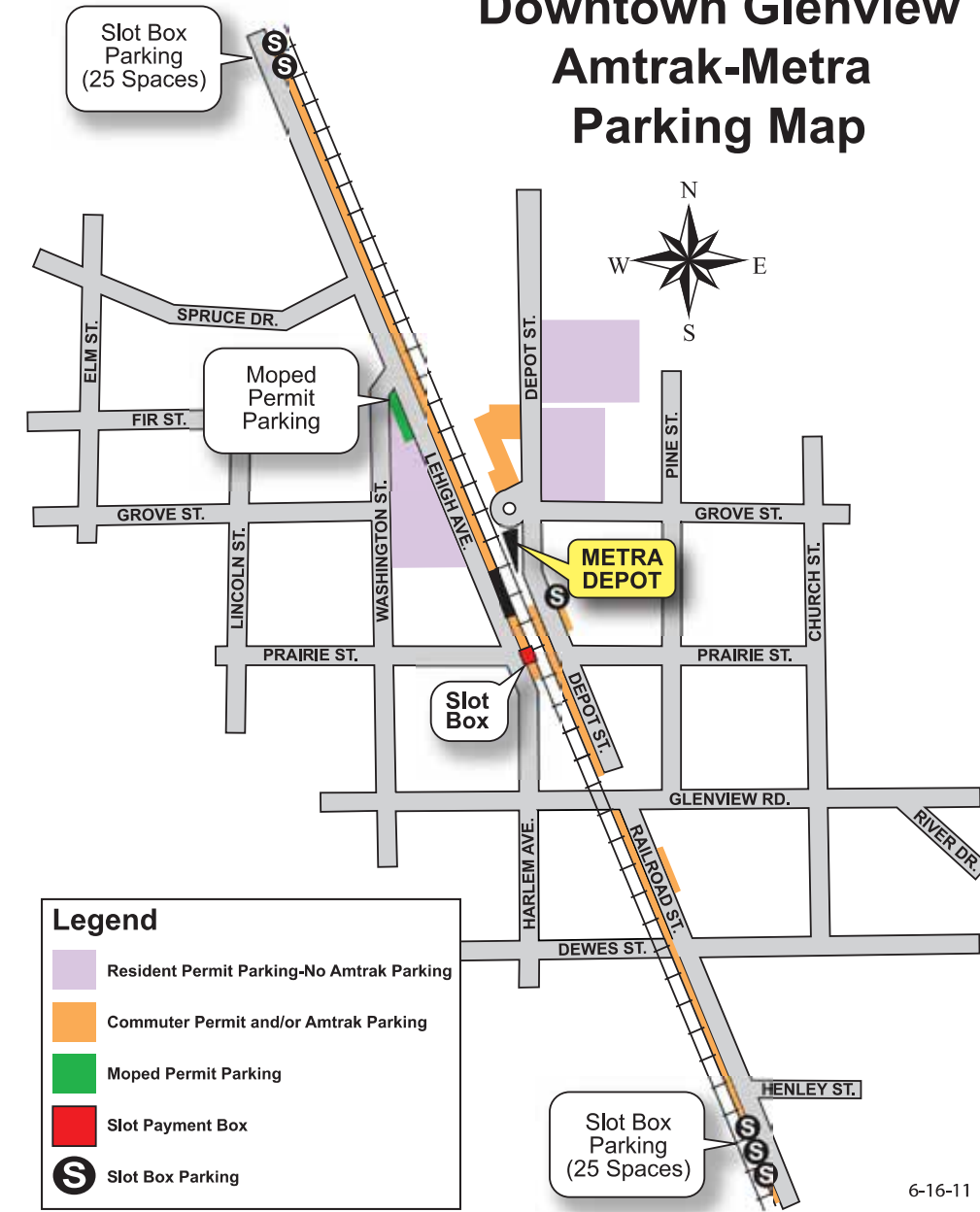


Common Carp is a managed species due to its tendency to increase in abundance proportionally to quality vegetation, and cause shoreline erosion.

1-11-2011

# Downtown Glenview

## Amtrak-Metra Parking Map



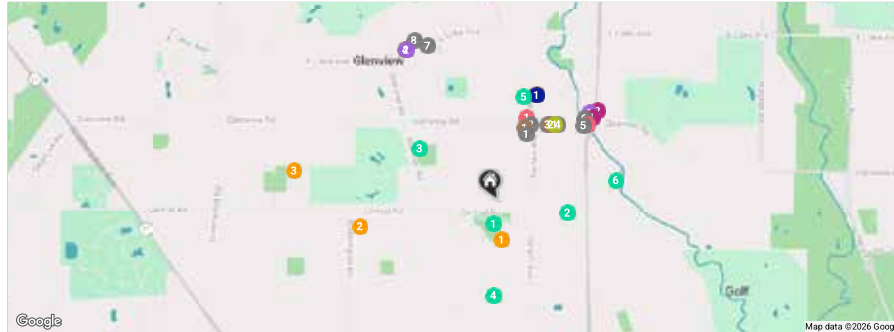
### Legend

- Resident Permit Parking-No Amtrak Parking
- Commuter Permit and/or Amtrak Parking
- Moped Permit Parking
- Slot Payment Box
- S** Slot Box Parking

6-16-11

FEATURED PROPERTY

# 2009 Robincrest Lane



**RESTAURANTS**

- 1 Subway  
948 HARLEM AVENUE, 0.4 MI
- 2 Viccino's Pizza Company  
1905 GLENVIEW ROAD, 0.5 MI
- 5 The Foxtail Glenview House  
1843 GLENVIEW ROAD, 0.5 MI
- 4 Forza Meats  
1811 GLENVIEW ROAD, 0.5 MI
- 5 Jackman & Co.  
1749 GLENVIEW ROAD, 0.6 MI
- 6 Jimmy John's  
1746 GLENVIEW ROAD, 0.7 MI
- 7 Wildfire  
1300 PATRIOT BOULEVARD, 1.0 MI
- 8 Ema Glenview  
1320 PATRIOT BLVD, 1.0 MI

**COFFEE**

- 1 Dunkin'  
980 HARLEM AVENUE #23, 0.4 MI
- 2 Glenview Grind  
1637 GLENVIEW ROAD, 0.5 MI
- 5 Hometown Coffee & Juice  
1127 DEPOT STREET, 0.6 MI
- 4 Starbucks Coffee Company  
1340 PATRIOT BOULEVARD, 1.0 MI

**SHOPPING**

- 1 Hlavacek Florist of Glenview  
1010 WAUKEGAN RD, 0.7 MI
- 2 Gigi's Closette  
1029 WAUKEGAN ROAD, 0.8 MI

**GROCERY**

- 1 Heinen's Grocery Store  
1020 WAUKEGAN ROAD, 0.7 MI

**GYM**

- 1 CorePower Yoga - Glenview  
1819 GLENVIEW ROAD, 0.5 MI

**SCHOOLS**

- 1 Hoffman Elementary School  
2000 HARRISON STREET, 0.2 MI
- 2 Springman Middle School  
2701 CENTRAL ROAD, 0.8 MI
- 5 Henking Elementary School  
2941 LINNEMAN ST, 1.1 MI

**ENTERTAINMENT**

- 1 Glenview Public Library  
1930 GLENVIEW ROAD, 0.5 MI

**TRANSIT**

- 1 Glenview METRA - MILWAUKEE DISTRICT NORTH, 0.6 MI

**PARKS**

- 1 Richard E Johns Park  
2101 CENTRAL ROAD, 0.1 MI
- 2 Central Tot Lot  
601 LEHIGH AVENUE, 0.4 MI
- 3 Swenson Park  
901 SHERMER ROAD, 0.5 MI
- 4 Manor Park  
200 LINCOLN STREET, 0.5 MI
- 5 Jackman Park  
1011 LEHIGH AVENUE, 0.6 MI
- 6 Judy Beck Park  
735 CARRIAGE HILL DRIVE, 0.7 MI



**Connie Dornan**  
OFFICE: 847.832.0002  
MOBILE: 847.208.1397  
conniedornan@atproperties.com



@properties®

CHRISTIE'S  
INTERNATIONAL REAL ESTATE

*Leading* REAL ESTATE  
COMPANIES  
OF THE WORLD®

LP LUXURY  
PORTFOLIO  
INTERNATION

