

*Adding on to this 1914  
Pasadena traditional melds  
Western comfort with  
Old World country*

**T**raditional home design in Southern California ranges from one-story ranch houses to long-eaved Craftsmans, from red-tile-roofed Spanish Revivals to multiturreted, gingerbread Victorians. But early-1900s Southern California was settled largely by colonies of expatriate Midwesterners, so a good portion of its still-existing turn-of-the-century architecture is imbued with a certain heartland sensibility.

Such is the case with this 1914 two-story Pasadena farmhouse. Its brick sunroom, hipped roofs, clapboard siding and divided-light, double-hung windows reflect a Midwestern tradition of sturdy, solid and handsome architecture.

But the house was small, ill-planned and in pretty rough shape, so when designer Hugh Maguire and his family purchased the 1,500-square-foot "crackerbox" last year, his first instinct was not only to renovate but to add on extensively. After considering several options, Maguire settled on repeating the original two-story, hipped-roof form in the 1,000-square-foot family room/master suite addition, placing it on the south side and considerably back from the front of the house, and swinging the front door around to face the street. In so doing, he created a longer, more enticing entry and kept the well-sized backyard intact.

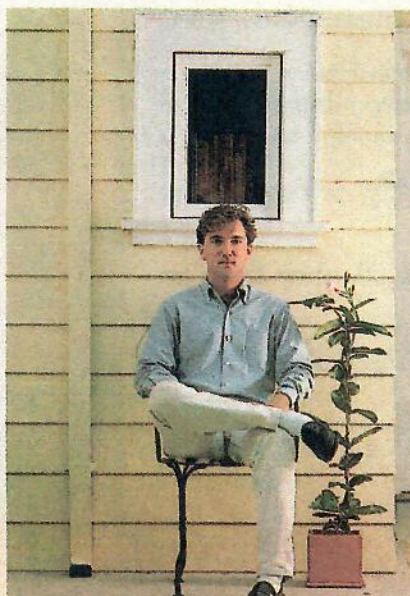
The interiors give a nod to casual sophistication, California style. Yellow walls, white trim and crown moldings create an inviting air. The red oak floors were all lightened and refinished. Simple plaster sconces upright the ceilings.

A pine armoire and wrought iron, stone-topped coffee table accent the overstuffed sofas and chairs in the family room. Here an unpainted garden chair, there a handpainted French country table, in




# SOPHISTICATED EASE

**D**esigner Hugh Maguire (right) built the hipped-roof, two-story, 1,000-square-foot addition onto the existing 1914 house (at left, above), turned the entry to face the street, and glassed in the west-facing porch. Where possible, he repeated the divided-light pattern of the original windows. Working with designer Cynthia Forchelli, Maguire chose yellow and white for both interior and exterior walls, added light green shutters outside and lightened the red oak floors throughout the interior rooms.



**Stone Pot** from Thomas M. Beeton. **Table** from John Hall Designs. **Globe** from West World Imports. **Vase** from The Pavilion at Tanner Market.



**T**he front door allows dappled afternoon light into the entry. The faux-marble-topped, handpainted country French table, antique globe and stone-potted topiary add an Old World twist to the new entry.



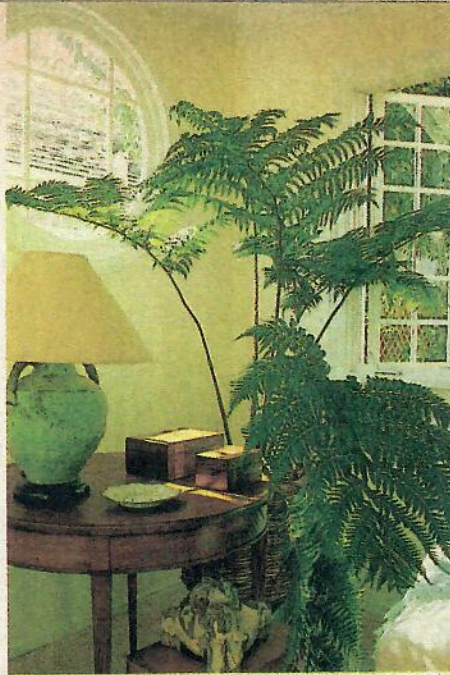
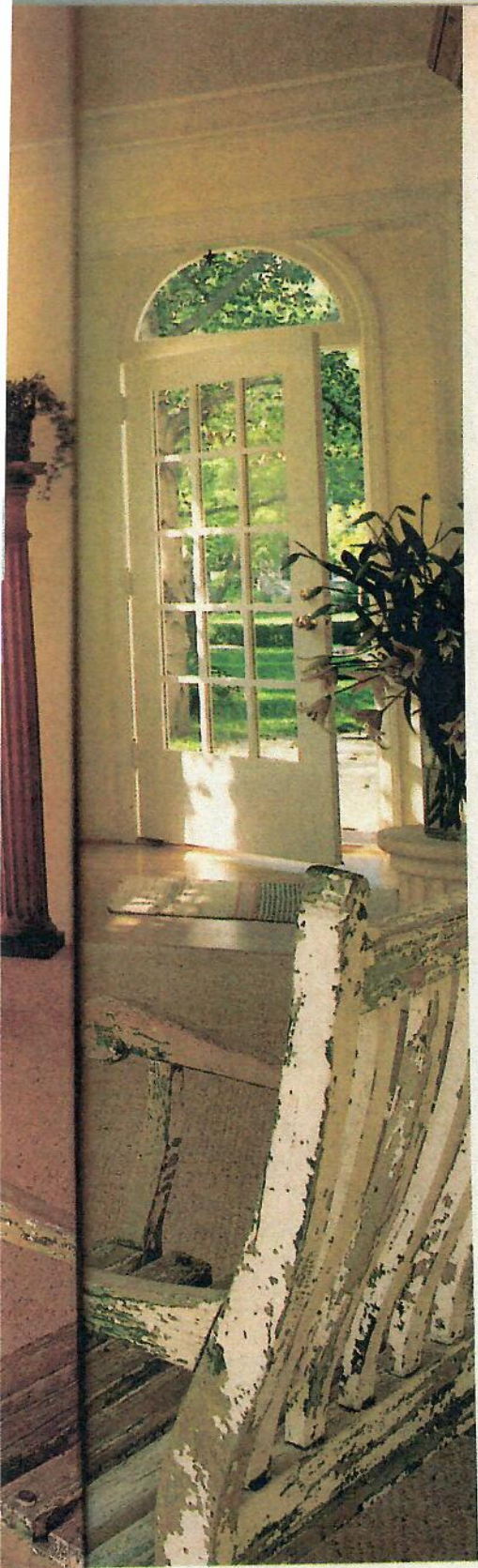
the parlor a cloth-draped table bring a feeling of welcome diversity. The sunroom is textured with a wicker bistro chair, a peeled twig table, a sisal rug and a pine bench; the dining room is a blend of French poplar and Irish pine, accented with pottery, pewter plates and frosted glassware. The kitchen is wood, glass and ceramic tile.

This mix of traditional Midwestern architecture and casual California interiors makes for a simple, light, casual yet tasteful environment, one that seems to work perfectly in a vintage Pasadena farmhouse.

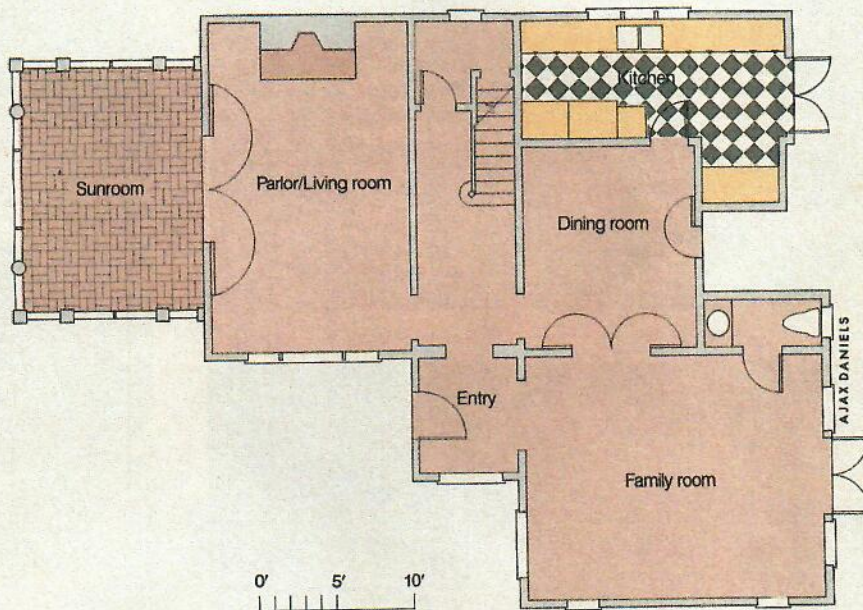
Written by Channing L. Dawson; photographed by Jeremy Samuelson; styled by Beverly McGuire

● For further information, see Buying Guide on page 94.

Columns and Lamp by Arroyo Collection. Painting from Taylor/Gratzner. Glassware and Candles from Wilder Place. Square Plate and Tin Pot from The Pavilion at Tanner Market. Above and opposite, bottom: Sofa, Upholstered Chairs, Coffee Table and Floor Lamp by The Kreiss Collection. Garden Chair from Thomas M. Beeton. Pine Armoire and Chest from West World Imports. Willow Chairs from Jude Kissinger. Trunk and Boxes from Country Pine & Design.

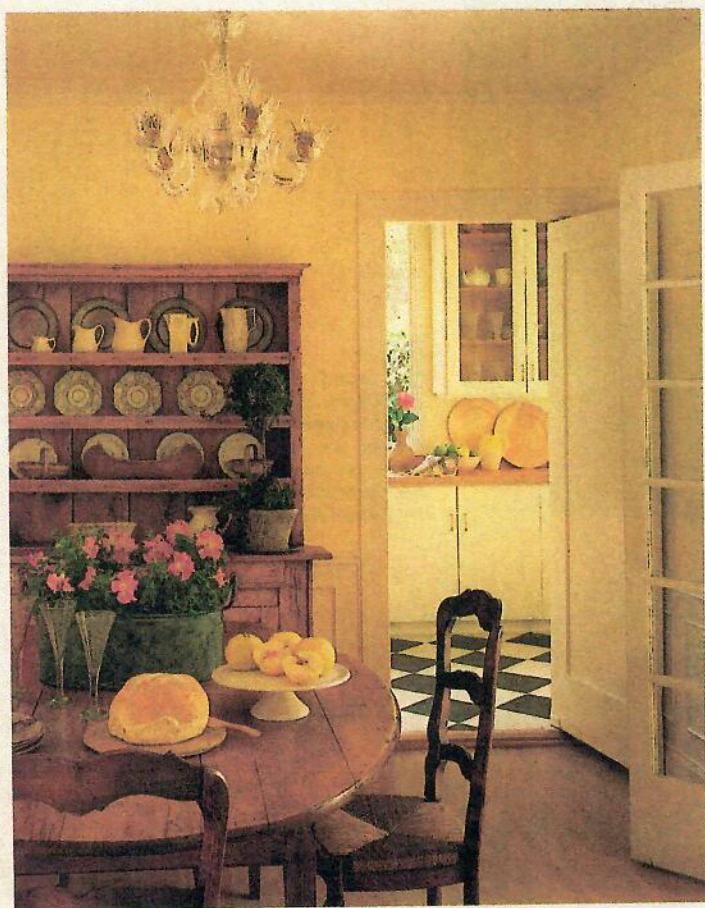


**R**ound windows allow southern light to filter in without sacrificing privacy. The project involved moving the entry, adding the family room and master suite, and expanding the kitchen by 4 feet to include a laundry room (see floor plan below).

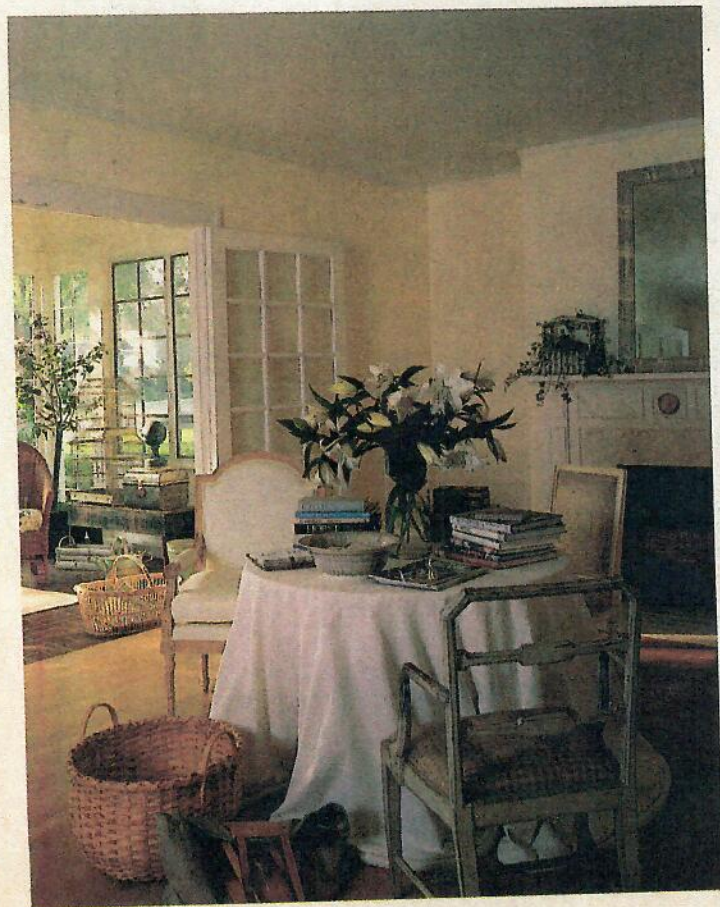
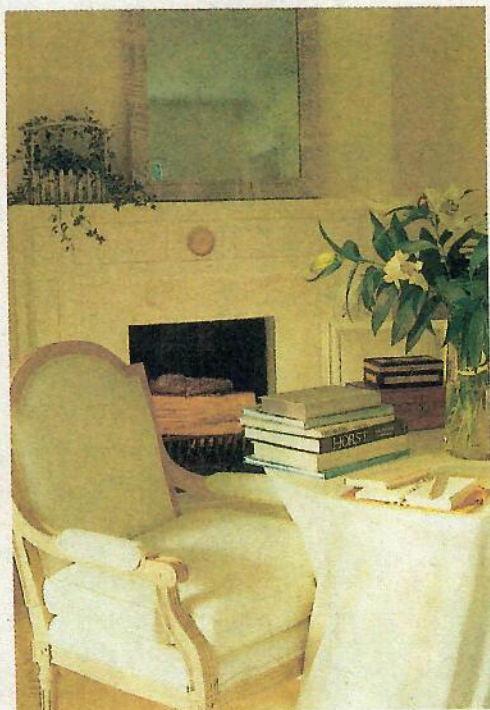


**B**erber carpet in family room (above) provides textured footing for sofas, chairs and coffee table. View from entry leads through French doors to backyard (right), where willow chairs grace a small patio. Pine boxes, fluted columns and garden chair balance upholstered look.

uelson;  
/Gratz  
nd Tin  
ottom:  
by The  
rmoire  
issingier.



*The interiors give  
a nod to casual  
sophistication,  
California style.*



**F**rench poplar table and Irish pine hutch create country feeling in dining room (top left); kitchen is beyond. In parlor/living room (above and left), Louis XVI armchair and two handpainted chairs side up to draped tea table. Glassed-in sunroom (opposite) kept original brick floor and nonstructural fluted columns.

Dining room: Table, Chairs, Hutch and Pewter Plates from West World Imports. Wheat-motif Pitcher and Paste Plates from Thomas M. Beeton. Planter from Arroyo Collection. Salad Plates, Glassware, Pitcher in Kitchen and Wood Platters from Wilder Place. Fruits Bianca Plates and Pitcher from Terra Cotta. Glasses from The Pavilion at Tanner Market. Parlor: Mirror, Cushioned Chair and Bowl from Thomas M. Beeton. Louis XVI Chair from Traditional Imports. Side Chair from Jude Kissinger. Reed-and-wood Box from Arroyo Collection. Sunroom: Bistro Chair and Baskets from Palecek. Twig Table and Bench from Lexington Place. Bird Cage and Traveling Case from Jude Kissinger. Fountain Spout and Water Can from Arroyo Collection. Fabric by Hinson. Biscuit Tin from West World Imports.

