



PARK GROVE

OMA · REM KOLHAAS

Coconut Grove, Miami



PARK GROVE

OMA · REM KOOLHAAS

Coconut Grove, Miami



MIAMI'S FIRST
NEIGHBORHOOD

6

A MODERN LIFE
IN THE GROVE

10

A LIFE AQUATIC

20

STRIKING RESIDENCES

30

MODERN SPACES

40

PRIVATE GARDENS

58

AMENITIES

62

THE GROVE'S CHARACTER

64

A SHARED VISION

68



THE SEA IS THE SOUL OF COCONUT GROVE, AND THE AREA'S DEEP-SEATED MARITIME TRADITION IS AN ESSENTIAL PART OF LIFE AT PARK GROVE.

THE GROVE

MIAMI'S FIRST NEIGHBORHOOD



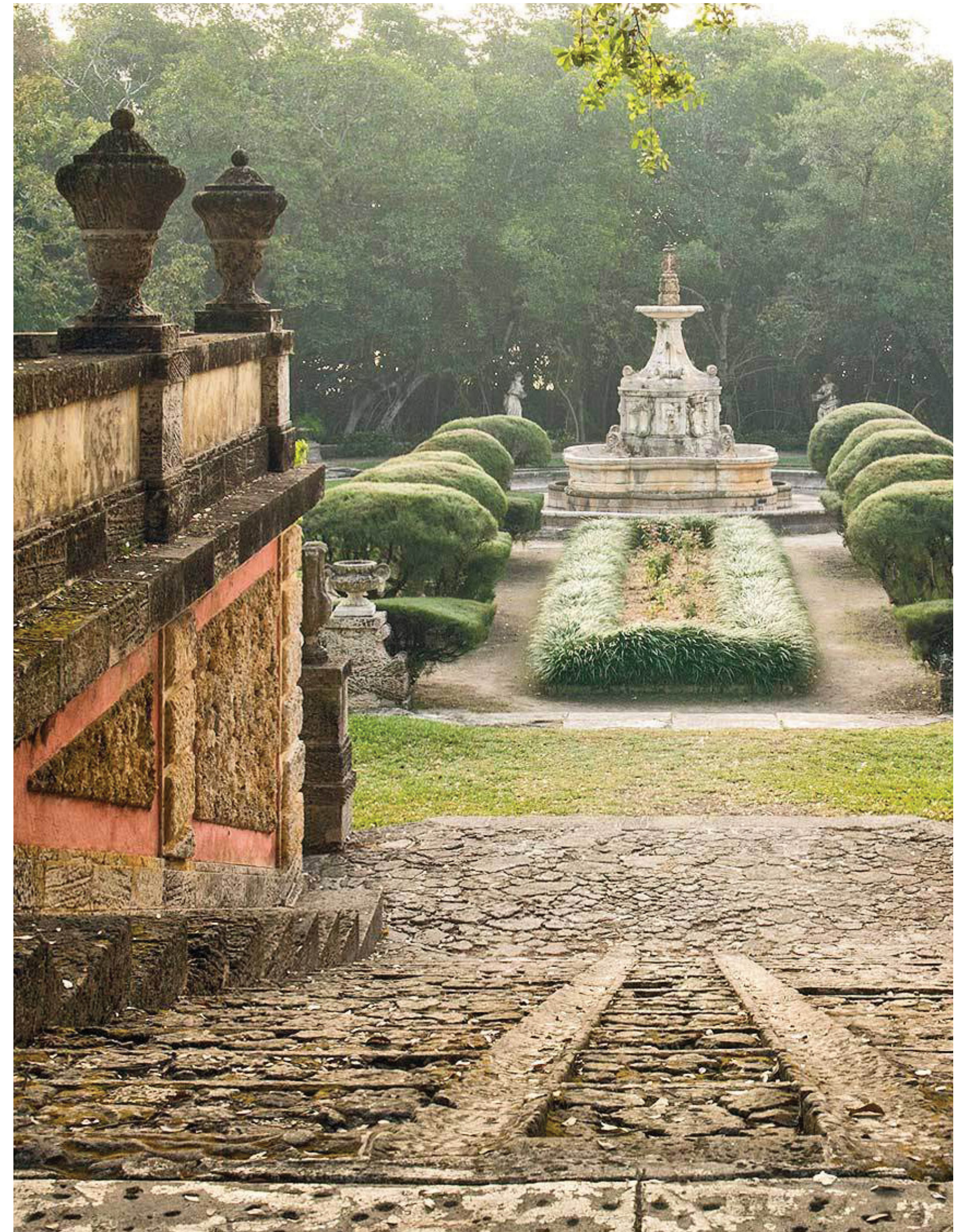
A PLACE OF SOUL AND COMMUNITY,
COCONUT GROVE HAS LONG BEEN
THE SPIRITUAL CENTER OF MIAMI.

When Miami's first settlers set foot on the pristine shores of Coconut Grove, they knew they'd found the ultimate homestead. Here, they'd discovered a landscape that was abundant in natural resources (freshwater springs, arable land) and astounding in its lush tropical beauty. Coconut Grove offered an unrivaled trifecta: a wild and verdant landscape, the clear-blue waters of Biscayne Bay, and year-round sunlight and warmth. In 1825, Coconut Grove became Florida's first official settlement, and the area has been considered the soul of Miami ever since.

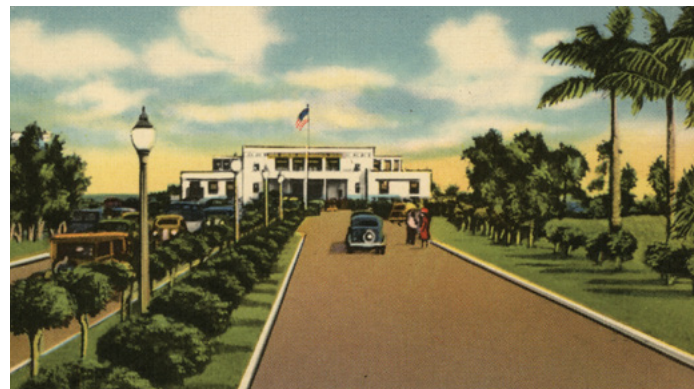
During the nineteenth century, the population of Coconut Grove slowly grew. In 1882, English immigrants Isabella and Charles Peacock opened the area's first hotel, the Bay View Inn (later renamed the Peacock Inn). With this institution firmly established, Coconut Grove became a destination for visitors, and it soon gained a reputation as an idyllic haven where life was both dynamic and relaxed, prosperous and simple. In 1887, yacht designer Ralph Middleton Munroe founded the Biscayne Bay Yacht Club, naming himself Commodore. Though it had long been a hub for mariners, Coconut Grove was now a center of recreational yachting and a known epicenter of the nautical life.

Around this time, Coconut Grove's first families were also planning and building grand waterfront estates, some of which still exist to this day. Munroe's house, for example, was built in 1891 and still stands in Barnacle Historic State Park, a five-acre park in the heart of Coconut Grove. In 1896, the Florida East Coast Railway was extended to Miami, bringing with it new resources and unprecedented wealth. The gilded age saw the arrival of new residents, many of whom built impressive homes around the bay. One such estate is Vizcaya (now known as the Vizcaya Museum and Gardens), which was the home of businessman James Deering. Originally set on 180 acres, the villa was primarily built between 1914 and 1922—although its stunning Italian Renaissance gardens were not completed until 1923.

During this age of prosperity, Coconut Grove entered the national spotlight for an entirely different reason. With the United States' entry into World War I in 1917, Dinner Key (located in the bay off Coconut Grove) became the site of one of the country's first naval air stations. A significant portion of American aviators were trained here, and suddenly, ever-serene Coconut Grove became a center of technology and progress. In the years following the war,



BUILT IN THE 1910s, THE VILLA AT VIZCAYA MUSEUM AND GARDENS IS A NATIONAL HISTORIC LANDMARK—
AND A RELIC OF COCONUT GROVE'S ILLUSTRIOUS PAST.



IN 1917, ONE OF THE UNITED STATES' FIRST NAVAL AIR STATIONS WAS CONSTRUCTED ON DINNER KEY, AN ISLAND JUST OFF COCONUT GROVE. OVER 1,000 YOUNG AVIATORS RECEIVED TRAINING HERE.

the station at Dinner Key became a seaplane hub for Pan American Airways, the world's most important airline at the time.

In 1925, Miami officially annexed Coconut Grove, a controversial decision that was opposed by many longtime residents of the Grove. But despite this official annexation, Coconut Grove retained its relaxed culture and "separatist" spirit. Though it was—and still is—one of Miami's most recognizable and cherished neighborhoods, the Grove has always had a culture unto itself, distinct from that of the fast-growing metropolis to the north.

It was precisely this spirit and mindset—relaxed, open-minded, creative—that attracted some of the world's most lauded artists, writers, and creators during the middle part of the twentieth century. Though the Grove was well-established as a retreat for wealthy tycoons, it was also a welcoming hideaway for creative people who wished to inhabit a leafy, private world where they could work and

live at their own pace. Dozens of American legends took up residence here at some point. Among them were painter John Singer Sargent, poet Robert Frost, playwright Tennessee Williams, and singer Joni Mitchell. This influx of talent left an indelible mark on Coconut Grove. To this day, it remains a place where tolerance, creativity, and free-thinking are hallmarks of the community. Each year, myriad parades, art festivals, and parties are held here, keeping the celebratory spirit of the Grove alive.

Today, nearly 200 years since it was first settled, Coconut Grove remains an idyllic homestead, a place where diverse residents have found their paradise amidst leafy palms and turquoise waters. The Grove is a place of rare balance, where the highest of luxury living commingles with a relaxed, bohemian attitude. Given this inimitable legacy and the area's unrivaled beauty, the Grove is undeniably the soul of Miami.

MODERN LIFE IN THE GROVE

THE RENAISSANCE OF MIAMI'S
MOST ESTABLISHED AND VIBRANT COMMUNITY



PARK GROVE STRIKES THE PERFECT
BALANCE BETWEEN ACCESS TO AND
ESCAPE FROM MIAMI, AMERICA'S
MOST COSMOPOLITAN CITY.

Coconut Grove has long been known as Miami's most idyllic, dynamic, and historic neighborhood—one that generations of cultural icons have called home. Today, residents of Park Grove are the inheritors of this rich legacy. Here, the best of upscale living—yachting, high culture, a vibrant society—meets an easy artistic sensibility. Though it's located just seven miles from downtown Miami, Coconut Grove represents a peaceful retreat from what has become the country's most cosmopolitan city. This rare balance between access and escape is one of the many factors that distinguish modern life in the Grove.

Coconut Grove is indeed a serene hideaway, but it's also a welcoming home. The area is known for its world-class schools: There are seven private schools in the neighborhood, the oldest of which dates back to 1903. In addition to having access to elite education, residents of Coconut Grove are surrounded by stunning natural beauty. The enclave boasts 16 picturesque parks. Among these is the Kampong, an 11-acre tropical garden that was originally the home of famed horticulturalist Dr. David Fairchild in the early twentieth

century. Other cultural destinations include the charming Vizcaya Museum and Gardens, the Barnacle Historic State Park, and the famed Coconut Grove Playhouse.

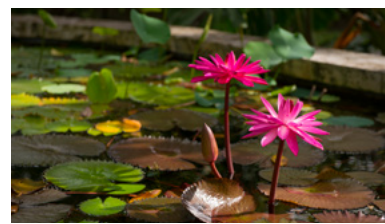
The storied enclave of Coconut Grove also has a rich tradition of hosting cultural and artistic events. Each year, the larger Miami community comes together for an array of outdoor festivals and celebrations that take place here. The most prominent of these is the Coconut Grove Arts Festival, but the Great Taste of the Grove Food & Wine Festival and the Goombay Festival (a Bahamian carnival) are highly anticipated events as well.

Within the village of Coconut Grove, outdoor cafés and restaurants line the streets, and residents have access to some of Miami's best shopping. In addition to numerous local boutiques, the neighborhood is home to two open-air malls, CocoWalk and Streets of Mayfair. Given its diverse cultural offerings, unmatched natural beauty, and unique lifestyle balance, Coconut Grove provides an ideal environment for families to put down lasting roots and take their place in the area's evolving story.



THOUGH AMERICA'S MOST COSMOPOLITAN METROPOLIS IS JUST A FEW MILES AWAY,
LIFE IN COCONUT GROVE MOVES AT A DECIDEDLY RELAXED PACE.











A LIFE AQUATIC

THE GROVE'S NAUTICAL FRONTIER



COCONUT GROVE'S RICH MARITIME HISTORY STILL INFORMS MODERN-DAY LIFE AT PARK GROVE, WHERE THE SEA IS A NATURAL EXTENSION OF THE HOME.

Residents of Coconut Grove have long enjoyed a deep and enduring connection to the seascape around them. In this community, residences overlook the water, children grow up on the decks of sailboats, and the most memorable parties take place at sea. In Coconut Grove, spending time on the water is not merely an activity—it's a way of life.

Given Park Grove's privileged position just steps from Biscayne Bay, life here represents the ultimate nexus of the city and the sea. The nearby Coconut Grove Sailing Club, the Coral Reef Yacht Club, and the Dinner Key Marina all offer access to the water and to the area's vibrant boating culture. In Coconut Grove, the pace of life moves with the tides, and everything from the décor of homes to the way people entertain is informed by the surrounding seascape. Even Miami's City Hall is an homage to the area's nautical past: It's located in the old Pan Am terminal building, a former seaplane hub located on Dinner Key.

From the Park Grove towers, a short walk through a

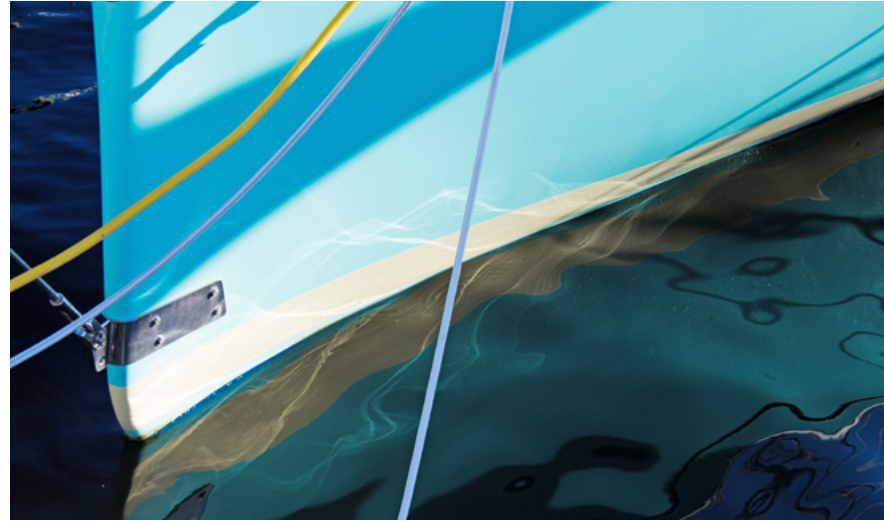
verdant park leads directly to the bay, where residents can access their boats or simply stake out a spot on the dock to watch the ships come and go. And in addition to direct access to the bay and its picturesque marinas, Park Grove's residences offer expansive views of the ocean and the horizon beyond. So even from the privacy of home, residents can enjoy an abiding connection to the impressive landscape that surrounds them. In addition, an in-house concierge is available to facilitate all maritime-related activities, from booking yachts for private parties to coordinating sailing lessons and chartering boats. When it comes to entertaining in the towers, Park Grove offers a bay-view dining room, where residents can treat their private guests to fresh seasonal fare and spectacular views of the water.

Since it was first settled, Coconut Grove has been a haven, inhabited by those who see the land as a refuge and the sea as their home. Today, this tradition is very much alive at Park Grove—a community that is always looking towards the water.



SINCE THE ARRIVAL OF THE AREA'S FIRST SETTLERS, BOATING AND YACHTING HAVE DEFINED LIFE IN THE GROVE.





FOR THOSE IN THE KNOW, COCONUT GROVE FEELS LIKE A WELL-GUARDED SECRET—
A PLACE WHERE YOU CAN COMPLETELY ESCAPE, WHILE STILL KEEPING AN EYE ON THE MIAMI SKYLINE.





LEAVE YOUR SHOES AT HOME. THE BAY IS JUST A SHORT WALK TO THE TOWERS OF PARK GROVE.

STRIKING RESIDENCES TO MATCH THE GROVE'S ENERGY

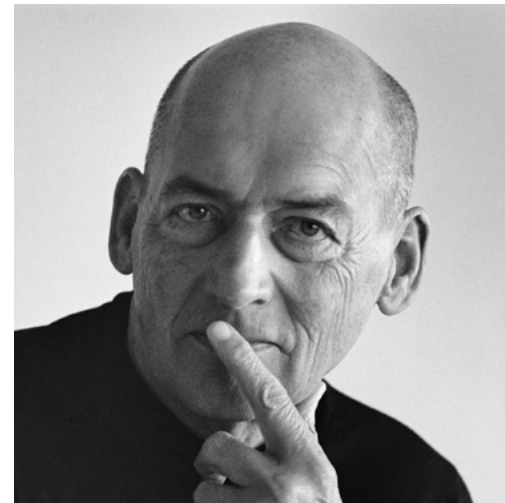
ARCHITECTURE BY OMA · REM KOOLHAAS



Given that life and art have always been inextricably linked in Coconut Grove, it follows that Park Grove, the area's most dynamic project to date, would be conceived by some of the world's foremost artistic thinkers. Led by Rem Koolhaas, Rotterdam-based architectural and design practice OMA (the Office for Metropolitan Architecture) has been shaping the global conversation around architecture and urbanism since its founding in 1975. Today, Koolhaas and partners like Shohei Shigematsu—who oversaw the project at Park Grove—continue to shift the very paradigms they helped create.

Park Grove represents a singular opportunity to own a home in the finest—and final—building in Coconut Grove. In addition to its unrivaled location just off Biscayne Bay, Park Grove constitutes a unique artistic achievement, rendered by some of the world's greatest living architects. Koolhaas and Shigematsu, both active faculty members at the Harvard Graduate School of Design, are known for their unique ability to rethink architectural norms and re-imagine the boundaries of the possible. As the author of the hugely influential *Delirious New York* and *S,M,L,XL*, Koolhaas is a Pritzker prize winner who has changed the face of architecture with iconoclastic projects like his Prada Transformer in Seoul, South Korea. His trailblazing CCTV Headquarters in Beijing, China, re-wrote the rules for what a skyscraper could and should be.

Shigematsu has been equally audacious in his projects, which have included the National Museum of Fine Arts (Musée National des Beaux-Arts) in Quebec and Milstein Hall at Cornell University. He has also led a number of



REM KOOLHAAS



SHOHEI SHIGEMATSU



OMA'S BAY-FACING TOWERS REPRESENT COCONUT GROVE'S MOST AMBITIOUS ARCHITECTURE TO DATE.

INSPIRED BY FLORIDA'S BARRIER ISLANDS
THE RESIDENCES' ORGANIC FORMS
BOTH RESPOND TO THE SURROUNDING
LANDSCAPE AND ENHANCE IT.



COMPLETED IN 1983, CHRISTO AND JEANNE-CLAUDE'S "SURROUNDED ISLANDS" PROJECT USED 6.5 MILLION SQUARE FEET OF PINK WOVEN POLYPROPYLENE FABRIC TO EXTENDED AND ENHANCE ELEVEN OF THE SMALL ISLANDS IN BISCAYNE BAY.



MILSTEIN HALL, CORNELL UNIVERSITY
ITHICA, NY, USA



PRADA STORE
NEW YORK, NY, USA



KANYE WEST'S 7-SCREEN PAVILION
CANNES, FRANCE

collaborations with leading international artists. He worked with hip-hop artist Kanye West to create a seven-screen pavilion at the Cannes Film Festival, masterminded a studio renovation for Chinese artist Cai Guo Qiang, and designed the Marina Abramović Institute for the Preservation of Performance Art in upstate New York.

Typically preferring large-scale public projects, OMA rarely works on commercial developments. But Koolhaas, Shigematsu, and their talented team specifically chose Park Grove as their first commercial residential project in the United States. Coming from the world's most discerning architectural minds, this is not an insignificant gesture. In Park Grove, OMA saw an opportunity to create not merely a residential development, but a work of intense intellectual rigor. As such, residents of this building will be living in an unprecedented space conceived by some of the world's leading creative minds. Koolhaas and Shigematsu are more than architects; they are conceptual artists, which is precisely why Coconut Grove is the ideal place for them to express their groundbreaking vision.

Though Miami does not lack for luxury towers, the buildings at Park Grove symbolize a clear departure from the developments happening elsewhere in the city. Here, OMA assiduously studied the history and geography of the land, and designed three towers that respond to both. Although these structures are undeniably modern, their organic forms seem to grow upwards from the earth. In this sense, they both reflect and respect the unique landscape on which they stand.

Given Park Grove's incredible location right near the bay, the towers are strategically oriented to provide sweeping sea and city views from every residence. From the ground floor to the penthouses, Park Grove offers a unique perspective from each level. Residents might gaze over leafy treetops to the bay, or be able to see all the way to downtown Miami. The towers are carefully designed to afford dynamic panoramic views of the surrounding landscape. From within the towers, the life of the bay—picturesque ships, breaking waves, passing clouds, fiery sunsets—becomes an integrated part of being at home. The residences' private balconies and large glass walls provide a sense of connection between the indoors and out, and the ocean becomes the natural backdrop for life.

Beyond the individual units, Park Grove's common spaces—decks, gardens, lounges, event rooms—also offer dramatic views of the bay. So whether residents are catching an early sunrise, gazing out to sea at midday, or having cocktails as the sun sinks below the horizon, far-reaching vistas are an integral part of daily life.

Coconut Grove has long been a community that welcomes and supports artists, and with the introduction of high-profile events like Art Basel, Miami has become an art-world destination. Within this environment, it's fitting that artists like Koolhaas and Shigematsu would want to leave an indelible mark on Coconut Grove. In a way, this is the logical perpetuation of an artistic cycle that began long ago. At Park Grove, the partners at OMA have done more than create design-forward towers—they've created dynamic sculptures that will live at the heart of the unfolding Coconut Grove story.



OMA'S BAY-FACING TOWERS REPRESENT COCONUT GROVE'S MOST AMBITIOUS ARCHITECTURE TO DATE.



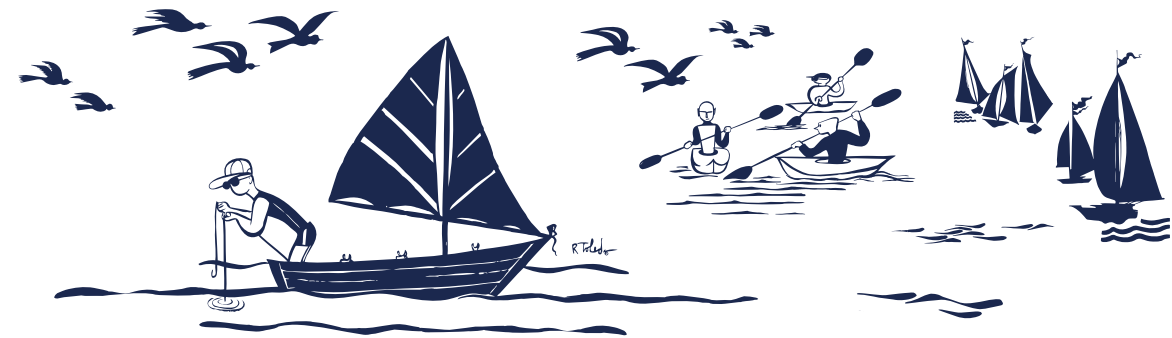
PARK GROVE'S STUNNING TOWERS SHINE LIKE A BEACON, BECKONING BOATERS HOME AT THE END OF A LONG DAY AT SEA.



PARK GROVE IS THE PERFECT ARTICULATION OF MODERN LIFE IN THE GROVE: A HAVEN, A HOME, AND A SERENE SEASIDE ESCAPE.

MODERN SPACES WITH TIMELESS FINISHES

INTERIORS BY WILLIAM SOFIELD



When the world's most discerning tastemakers wish to create interiors that are truly remarkable, they turn to acclaimed interior designer William Sofield. Abiding by the mantra, "Design must live as well as it looks," Sofield takes a holistic approach to interiors, crafting spaces that balance elegance with utility. *Architectural Digest* describes him as "a maestro of magical interiors, an alchemist capable of conjuring sublime, idiosyncratic spaces that balance opulence and rigor. His methodology, deeply rooted in the principles of modernism, relies on exquisite craftsmanship, fine materials, and adherence to the simple idea that substance and suitability overrule trendiness."

From commercial projects to private residences, Sofield begins every project with a unique point of view and a daring vision. He often looks to historic precedent, but always reinterprets tradition to make it feel completely fresh and modern. Though his designs have a way of subtly building to an aesthetic crescendo, they are always rooted in practical comforts and the realities of quotidian living. It's this rare balance—between provocative beauty and utter comfort—that sets Sofield apart in his field.

An interior design legend and a winner of the prestigious Cooper Hewitt National Design Award, Sofield has spent

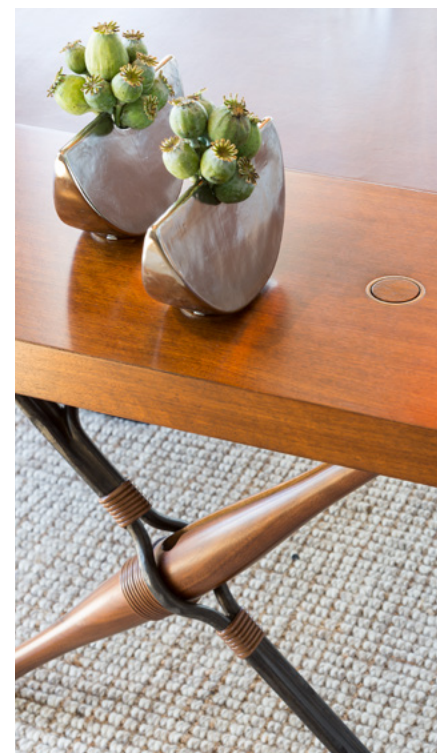


WILLIAM SOFIELD

decades creating unforgettable spaces for some of the world's most design-forward clients, including Tom Ford, Harry Winston, Yves Saint Laurent, the Soho Grand Hotel, and David Barton Gym. In his studio, Sofield oversees a team of 25 designers whose expertise spans architecture, engineering, and industrial, interior, graphic, and landscape design. As such, he is able to understand and approach design from every possible angle, creating coherent spaces that draw on diverse skill sets and references. Sofield's work is unique in



WILLIAM SOFIELD'S LUXURIOUS INTERIORS ARE STUDIES IN CREATIVITY AND COMFORT, SOPHISTICATION AND SIMPLICITY.



SOFIELD'S INTERIORS ARE ELEGANT AND MINIMALIST, BUT A STRONG, STRATEGIC USE OF COLOR ADDS TO THEIR OVERALL SOPHISTICATED.



THE DÉCOR OF PARK GROVE'S TERRACES EMPHASIZES THE SWEEPING VIEWS BEYOND.

that it always feels fresh, yet it endures and seems to improve with age. He has an uncanny way of designing for both today and tomorrow, and as a result, his spaces are as timeless as they are of the moment.

At Park Grove, Sofield has crafted breathtaking interiors that perfectly complement OMA's striking towers. In the same way that these towers represent artistic achievements, Sofield's interiors are works of design genius. In this one-of-a-kind setting, his unique brand of elegant minimalism is articulated through the use of carefully selected organic materials that reflect the surrounding landscape and the sea-oriented community of Coconut Grove. From flooring to countertops to upholstery, Sofield has made each aesthetic choice with an eye toward building a luxuriously tactile landscape in which to live and play.

In the residences at Park Grove, Sofield's unique vision comes through via design details like fine Italian cabinetry and sophisticated stone countertops, but he also lets the impressive natural context speak for itself. Here, interiors are designed to frame sweeping sea views, taking full advantage of outdoor space and glass walls to maximize light and air. Sofield's bright, uncluttered common spaces are clean and breezy. A natural color palette—light woods, white walls—creates a sense of ease and lightness that exemplifies the Park Grove lifestyle. Here, living rooms open onto terraces, providing seamless spaces in which to entertain both indoors and out.

While the public areas of the home provide elegant backdrops where groups can congregate, the private spaces—

bedrooms, bathrooms—serve as serene sanctuaries, with plenty of space to spread out and relax in comfort. Sofield's thoughtful layouts, luxurious materials, and state-of-the-art appliances (Sub-zero, Wolf) elevate the residences at Park Grove to the highest level of luxury in Miami.

Beyond the individual residences, Sofield has also created elegant lobbies and amenity areas befitting of the Park Grove lifestyle. Strong minimalist entry areas and reception desks create a dramatic sense of arrival for residents and their guests. Spacious, open foyers afford space where residents can relax, read, entertain, or casually run into neighbors. Those wishing to entertain large groups can do so in the boldly designed public dining room, an expansive space with a view of the bay and access to a private chef's kitchen. For business needs, Sofield has crafted a private conference room that overlooks the bay. Appointed with modern, minimalist furniture, it's a peaceful space that allows residents to be productive without having to leave the comforts of home. Park Grove's rooftop pool and private cabanas are also designed in Sofield's signature minimalist style. From morning until night, residents can lounge poolside and take in extraordinary views of the bay and the city beyond.

At Park Grove, every element is designed to complement and enhance the surrounding seascape, and William Sofield's interiors are a perfect example of this philosophy. Elegant, understated, and luxurious, they convey a feeling of serenity and good taste. Here, Miami's most thoughtfully conceived and beautifully executed design is a part of daily life.



RESIDENTS CAN BEGIN AND END THE DAY IN SPACES THAT INVITE THE ELEMENTS IN.

PHOTOGRAPH OF FURNISHED SALES GALLERY



GLASS WALLS MAXIMIZE VIEWS OF THE BAY AND ALLOW NATURAL LIGHT TO FILTER INTO RESIDENCES THROUGHOUT THE DAY.



RESIDENCES AFFORD UNINTERRUPTED VIEWS OF THE MARINA AND IDYLIC BISCAYNE BAY.



GLASS WALLS MAXIMIZE VIEWS OF THE BAY AND ALLOW NATURAL LIGHT TO FILTER INTO RESIDENCES THROUGHOUT THE DAY.

PHOTOGRAPH OF FURNISHED SALES GALLERY



AIRY, OPEN KITCHENS ARE OUTFITTED WITH THE HIGHEST LEVEL OF FINISHES AND TOP-QUALITY APPLIANCES.

PHOTOGRAPH OF FURNISHED SALES GALLERY



SOFIELD'S BAY-VIEW DINING SPACES MAKE EVERY MEAL AN EVENT.

PHOTOGRAPH OF FURNISHED SALES GALLERY

PRIVATE GARDENS & ELEGANT OUTDOOR LIVING

LANDSCAPES BY ENZO ENEA



The lush, subtropical landscape of the Florida coastline has always had a defining influence on the culture of Coconut Grove. It was the leafy forests and palm-shaded shores that first lured mariners from the sea. Freshwater springs convinced early settlers to stay, and those living here have prospered ever since. Vibrant landscapes and abundant resources continue to define life in Coconut Grove today. Those who live here engage with their natural surroundings constantly—whether they're picnicking in local parks, strolling along shaded sidewalks, sitting on docks that jut into the bay, or setting sail for a day at sea. The natural environment is a fundamental part of the Coconut Grove experience. As such, every built environment here must complement, respect, and enhance what already exists.

Given this sensitive mandate, it was clear that only a design genius would be able to further beautify the already breathtaking property at Park Grove. Yet somehow, visionary landscape designer Enzo Enea has elevated this landscape to a



AT PARK GROVE, ENZO ENEA CREATED A HARMONIOUS LANDSCAPE WHERE THE WILD AND THE BUILT ENVIRONMENTS MELD INTO ONE.

ENEA'S LANDSCAPES SEAMLESSLY REFLECT AN AREA'S NATURAL HISTORY AND ITS CONTEMPORARY USE.



ENZO ENEA'S SERENE LANDSCAPES INVITE YOU TO EXTEND YOUR HOME TO THE LUSH GARDENS BEYOND.

new level. Trained as both an industrial designer and landscape architect, Enea has worked in locales around the world. He gained formal training in Switzerland and London, where he earned numerous accolades, including multiple gold and silver awards at the Giardina show in Basel and Zurich, and a certificate of merit from the prestigious Chelsea Flower Show in London. Beyond his projects in Europe, Enea has worked in tropical locales like Brazil and Hawaii, experimenting with native species and learning the nuances of landscaping in a range of climates and ecosystems. He brings this incredible breadth of knowledge to his work at Park Grove.

Known for his unique ability to craft livable outdoor spaces that blur the boundaries between a structure and its surrounding landscape, Enea sought to create harmony between OMA's soaring towers and the vibrant coastal landscape that supports them. The result is a series of landscaped gardens that create a natural conversation between the built environment and the lush landscape that has always existed in Coconut Grove. A highlight of the project is the

park that Enea masterminded, which forms a pathway from the Park Grove towers to the bay. In creating this corridor, he has designed both a physical and spiritual link from life in the towers to life on the water.

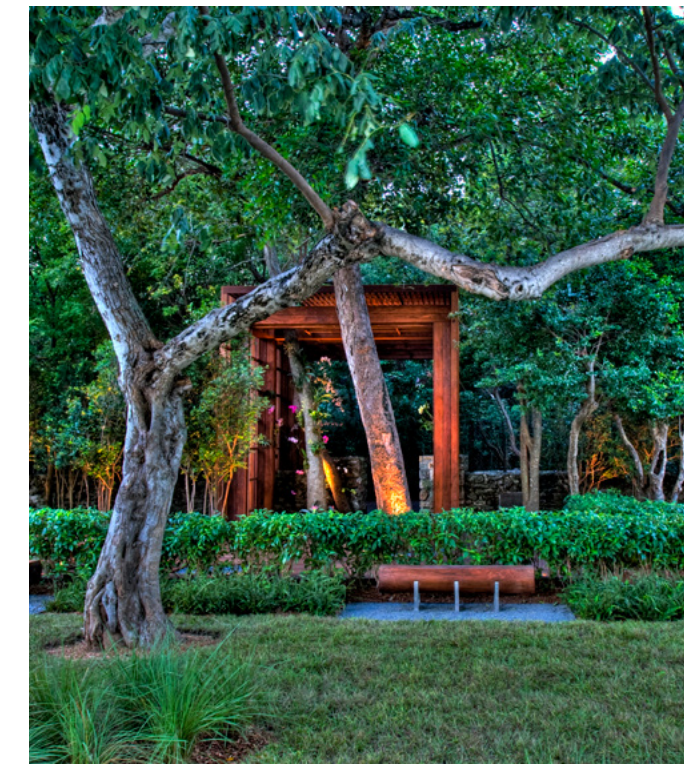
Enea is also one of the world's foremost tree specialists and collectors. In 2010, he opened the Enea Tree Museum near Upper Lake Zurich in Switzerland. Here, he created a wonderland that showcases 50 featured trees from around the world—some of which are more than 100 years old—alongside sculptures and designed plots of land. He took a similar approach to Park Grove. Here, the preservation of existing trees was a top priority, and many of the property's native species have been protected and highlighted in Enea's designs. Sustainability, along with beauty, is always at the forefront of his work.

Park Grove's impressive sculpture garden is a place where residents can stroll, read, picnic, and relax amongst works of art that are seamlessly integrated into the natural environment. This is a hallmark of Enea's work—the ability

AT PARK GROVE, ENEA BLENDED LUSH GREENERY WITH DYNAMIC SCULPTURES, CREATING A VIBRANT WORLD AROUND OMA'S IMPRESSIVE TOWERS.



TREE MUSEUM
RAPPERSWIL-JONA, SWITZERLAND



SIMPSON PARK
MIAMI, USA

to harmoniously blend landscape, botany, art, architecture, and design to create an innovative environment that still feels deeply rooted in place.

In combination with the natural environment, Enea's landscapes create a harmonious experience for the residents of Park Grove. This fluid indoor-outdoor mentality extends to all areas of life—from the airy residences with their private balconies, to the impressive gardens that frame each of the towers. Although privacy is paramount at Park Grove, there is little definitive separation between indoors and out.

In his forward-thinking work, Enea has created spaces where residents can immerse themselves in nature, while still enjoying the privacy of home. Residents might entertain on their own private balconies, or meet for cocktails at the rooftop pool. They might practice yoga in one of the many outdoor fitness spaces, or spend time with their families in the outdoor play areas for children. The gardens themselves offer endless paths to walk, sculptures to discover, nooks to uncover, and spaces in which to steal away. But in the end,

all paths lead back home to Park Grove.

All of Enea's work is defined by an abiding respect for history, sustainability, and the relationship between the built environment and the natural world. At Park Grove, this philosophy manifests itself in myriad ways. Enea has managed to create a landscape that both builds off of Coconut Grove's rich natural history, but also suggests a way forward. His lush gardens serve to ground OMA's elegant towers, but also enhance them. His gardens provide a sense of escape, but also a profound feeling of intimacy and protection. It's these subtle but crucial nuances that set the world's greatest properties apart from the rest, and Park Grove can now count itself among this number.

THE LUXURIES OF LIFE AT PARK GROVE

THE CLUB & AMENITIES



Though it's located just a few miles from downtown Miami, Park Grove feels like a peaceful world unto itself. And in addition to its unmatched bayside location, residents here have access to a wealth of services and amenities that rival those at any of the area's high-end hotels or members clubs. Here, residents' needs are anticipated, their desires fulfilled, and their expectations exceeded. From its rooftop pool to its on-call butler service, Park Grove represents the absolute pinnacle of luxury living.

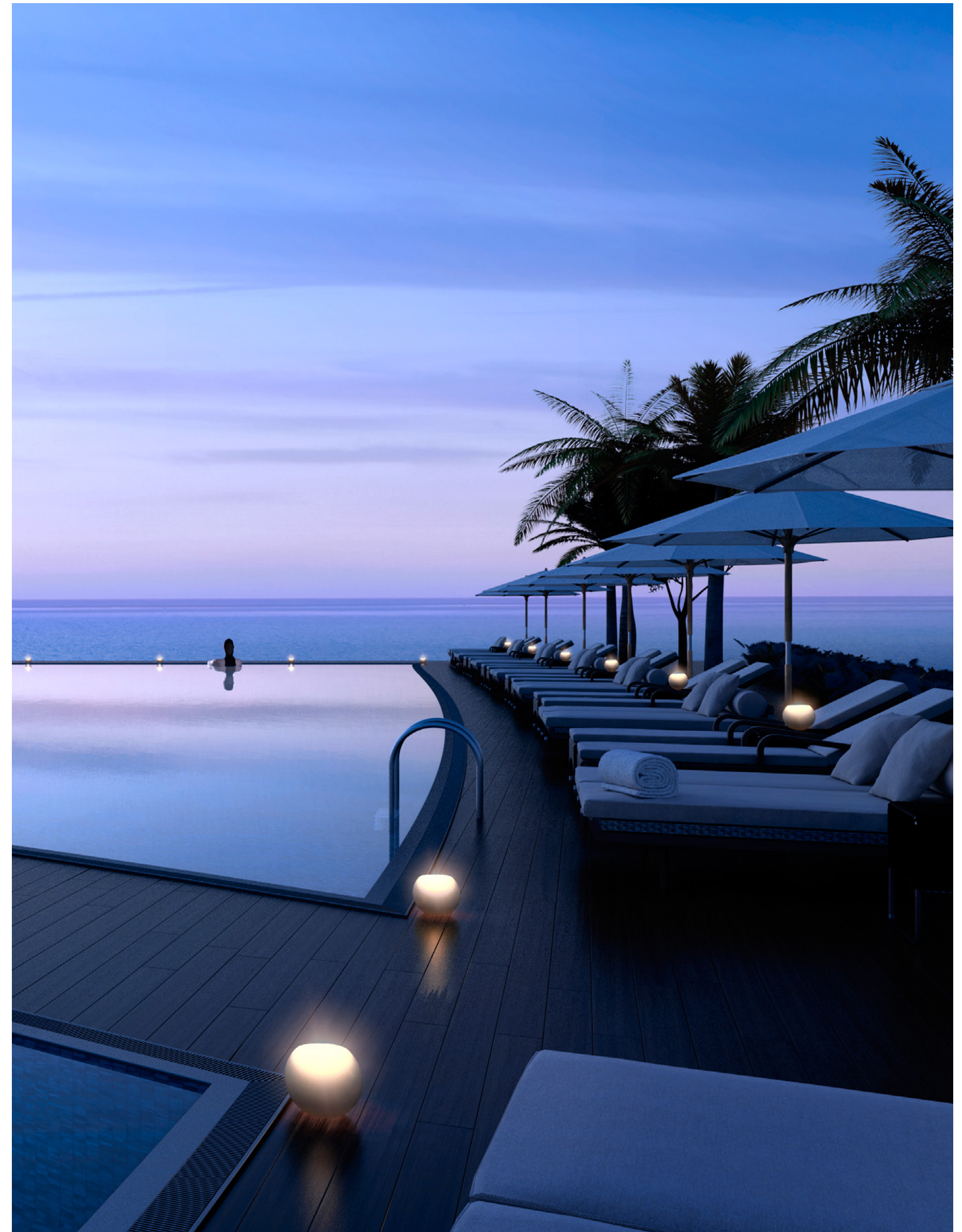
Being active and staying healthy is a priority for many living at Park Grove. Within each tower, residents have access to state-of-the-art fitness facilities, private training rooms (including a pilates room and spinning studio), indoor and outdoor yoga spaces, and a spa with personal treatment rooms, steam rooms, and saunas. Personal trainers are on-call for residents who wish to set up a structured workout regimen.

When it comes to relaxation, Park Grove boasts a number of peaceful pools, flanked by private cabanas. Some of these are overhung with leafy palms, while others are located at

rooftop level and boast panoramic views of Biscayne Bay and the Miami skyline. Those looking to entertain can do so in the building's many indoor or outdoor lounges and bars. A private dining room, adorned with impressive contemporary art, can be reserved for private events; and an on-call chef can be arranged for any catering needs.

Given Park Grove's dynamic and discerning community, it follows that it's a cultural haven of sorts. Here, residents can attend curated events and lectures, musical performances, private film screenings, and private tastings—all without leaving home. In quieter moments, they can also take advantage of a billiards room and state-of-the-art private screening and media room. For those desiring extra storage to enhance their lifestyles, there are dedicated areas for bike and watercraft storage, in addition to a wine cellar and private wine lockers.

When it comes to services, all residents have access to a 24-hour concierge, valet, and butler, so no need will go unmet. At Park Grove, every facet of life is attended to with assiduous attention to detail and the highest level of discretion.





CAPTURING THE GROVE'S UNMISTAKABLE CHARACTER

ARTIST & COLLABORATOR, RUBEN TOLEDO



Cuban-American artist Ruben Toledo first visited Coconut Grove in the 1970s. "It was an artist's dream," he recalls of the bohemian enclave, where scores of artists were living and collaborating in a tropical paradise. He and his wife, acclaimed fashion designer Isabel Toledo, had ventured to Florida to soak up inspiration from the many artists and designers who had flocked there. Forty years after their initial visit, the Toledos' vivid memories of Coconut Grove continue to fuel their creative pursuits.



RUBEN & ISABEL TOLEDO

Although the dynamic couple resides in Manhattan, Ruben's strong associations with the Grove have stuck with him over the years. When the Park Grove team was seeking an artist to collaborate on the project, he was the first person who came to mind. Toledo's strong but whimsical artwork seemed a perfect fit for Park Grove, and he was commissioned to create an eight-foot-high art fence to surround the property during construction (slated to begin in 2015). The fence—adorned with Toledo's lively, playful figures—references the area's vibrant lifestyle and bohemian past, and will set the tone as the Park Grove project gets underway.

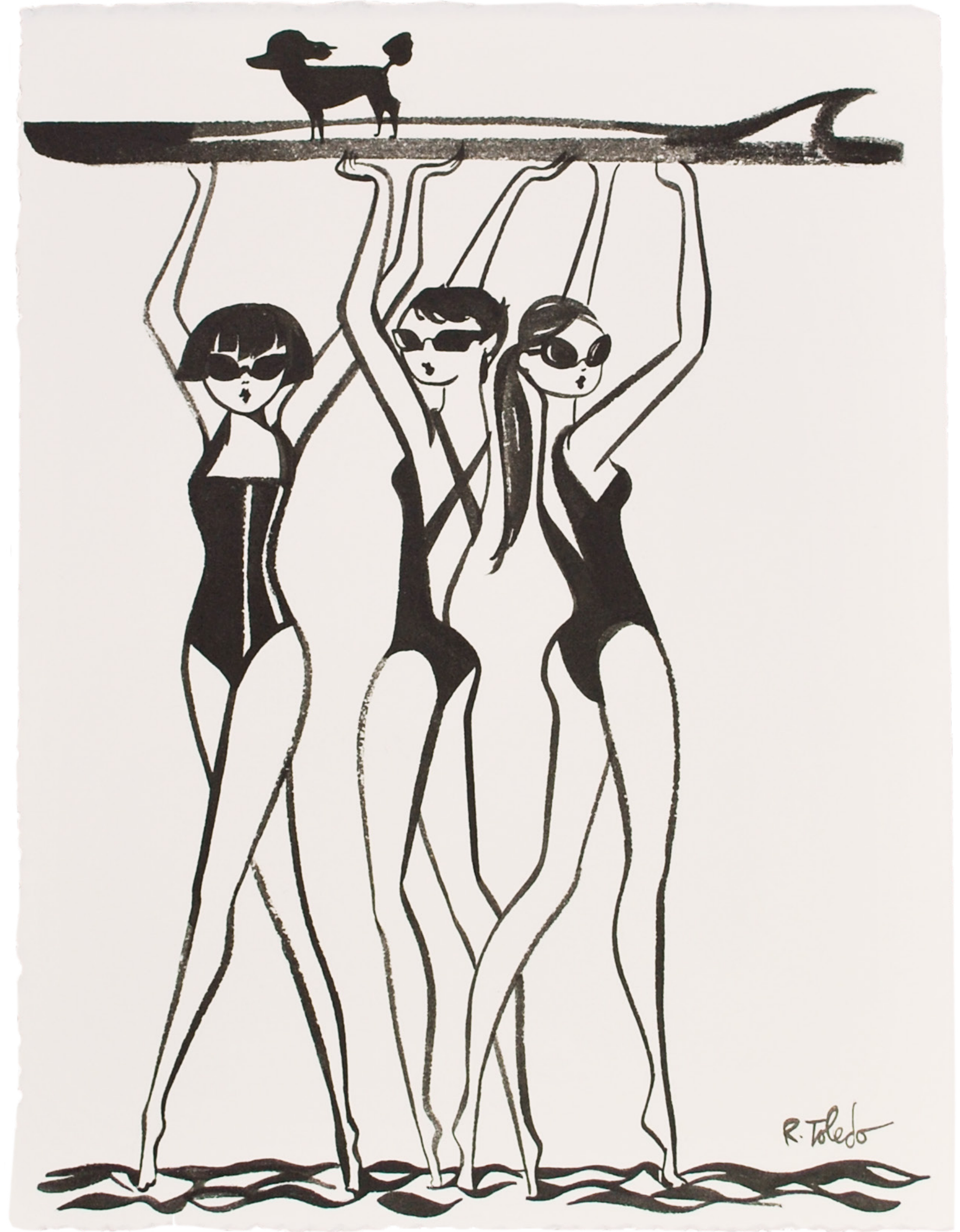
In this context, Toledo's fantasy-driven artwork blends beautifully into the lush landscape and also captures the spirit of the Grove in a profound way. Although Park Grove is very much a cutting-edge, forward-thinking project, it is also inextricably linked to Coconut Grove's lively, artistic past. On these streets and in these gardens, some of the country's most influential artists lived, played, and created lasting works. In this tradition, Toledo's fence is a symbolic bridge that connects the present to both the past and the future.

Toledo is an artist of wide-ranging talents. He authored the book *Style Dictionary*, a collection of drawings and watercolors, and he and Isabel received the 2005 Cooper-Hewitt National Design Award for their work in fashion. But despite his diverse talents and interests, he seems particularly at home discussing his work for Park Grove.

Here, he has tapped into memories of decades long past, but he has also outlined an artistic hope for the future. In his work for Park Grove, we see the shape of creativity underpinned by art, design and energy, and Toledo's art fence perfectly articulates—and therefore perpetuates—this lasting legacy.



CUBAN-BORN ARTIST RUBEN TOLEDO AT WORK IN HIS STUDIO.



KNOWN FOR HIS WHIMSICAL ILLUSTRATIONS, RUBEN TOLEDO AND HIS WIFE, DESIGNER ISABEL TOLEDO, HAVE DERIVED MUCH INSPIRATION FROM COCONUT GROVE.

A SHARED VISION AND PASSION FOR THE GROVE

THE DEVELOPMENT PARTNERS



TERRA GROUP

DEVELOPMENT PARTNER

Terra Group is more than a real estate development firm—it's a civic galvanizer that works tirelessly to reinvigorate communities, enhance the urban landscape, and promote culture throughout South Florida. Founded in 2001 and led by father-and-son team Pedro and David Martin, this Miami-based firm is known for its trendsetting high-end residential communities that are as innovative as they are impactful. Through its thoughtful development strategy, Terra has gained a reputation for revitalizing neighborhoods and raising the overall profile of the areas it develops. The firm's unparalleled success in the region is largely due to the expertise and talent of its multi-faceted team, which includes architects, builders, designers, and strategists working together to bring Terra's singular vision to life. Beyond exceptional development, this award-winning team also plays an active role in charitable, civic, arts, and cultural organizations—a testament to its deep commitment to enhancing and enriching the community from every angle. Along with Related Group, Terra is the publisher of *The Grove* magazine.

RELATED GROUP

DEVELOPMENT PARTNER

Since its founding in 1979, Related Group of Florida has been at the forefront of luxury condominium development, setting a new industry standard for excellence and innovation. Helmed by Chairman and CEO Jorge Pérez, one of the country's leading entrepreneurs, Related has built and managed more than 80,000 condominium and apartment residences in major markets throughout Florida. Led by Carlos Rosso, Related's Condominium Division is known for its groundbreaking luxury properties, including Miami's Portofino Tower, Apogee, Murano Grande, and multiple collaborations with Donald Trump. The celebrated firm's properties showcase impeccable craftsmanship, innovative design, and a commitment to creating spaces that will endure and appreciate with time. Often partnering with world-renowned architects, designers, and artists, Related continues to push boundaries and raise the bar for the entire real estate community. Its dozens of awards include the Honor Award from the National Building Museum—an acknowledgment of architecture and design excellence in new development.



SINCE TERRA GROUP DONATED MIAMI'S HISTORIC FREEDOM TOWER TO MIAMI DADE COLLEGE IN 2005, IT HAS BECOME A CELEBRATED CENTER FOR CULTURE, ART, AND EDUCATION—HOSTING REGULAR EXHIBITIONS OF MASTERS LIKE DALÍ, GOYA, AND DA VINCI.



LOCATED ON A 240-FOOT STRETCH OF WHITE SAND BEACH, THIS 41-STORY TOWER, DEVELOPED BY RELATED GROUP, IS CONSIDERED ONE OF SOUTH BEACH'S MOST PRESTIGIOUS ADDRESSES.



COMPLETED IN 2008, RELATED GROUP'S EXCLUSIVE 67-UNIT PROPERTY SET THE PRECEDENT FOR LUXURY LIVING IN SOUTH BEACH'S HISTORIC SOFI ("SOUTH OF FIFTH") NEIGHBORHOOD.



WITH JUST 96 EXCEPTIONAL RESIDENCES, TERRA GROUP'S EYE-CATCHING TOWERS AT GROVE AT GRAND BAY REPRESENT ONE OF MIAMI'S MOST LUXURIOUS WATERFRONT RESIDENCES.



DESIGNED BY ARCHITECT RENE GONZALEZ, TERRA GROUP'S 18-STORY GLASS RESIDENTIAL TOWER USES TRANSPARENCY TO BLEND INTO THE MIAMI BEACH LANDSCAPE.



PARK GROVE

OMA · REM KOOLHAAS

Coconut Grove, Miami

DEVELOPED BY
TERRA GROUP & RELATED GROUP

BROKER PARTICIPATION WELCOME. ORAL REPRESENTATION CANNOT BE RELIED UPON AS CORRECTLY STATING THE REPRESENTATION OF THE DEVELOPER. FOR CORRECT REPRESENTATION, MAKE REFERENCE TO THE DOCUMENTS REQUIRED BY SECTION 718 · 503 FLORIDA STATUTES. TO BE FURNISHED BY THE DEVELOPER OR BUYER OR LESSEE. NOT AN OFFER WHERE PROHIBITED BY STATE STATUTES. PLANS, FEATURES AND AMENITIES SUBJECT TO CHANGE WITHOUT NOTICE. ALL ILLUSTRATIONS AND PLANS ARE ARTIST CONCEPTUAL RENDERINGS AND ARE SUBJECT TO CHANGE WITHOUT NOTICE. THIS ADVERTISEMENT DOES NOT CONSTITUTE AN OFFER IN THE STATES OF NY OR NJ OR ANY JURISDICTION WHERE PRIOR REGISTRATION OR OTHER QUALIFICATION IS REQUIRED. EQUAL HOUSING OPPORTUNITY.

