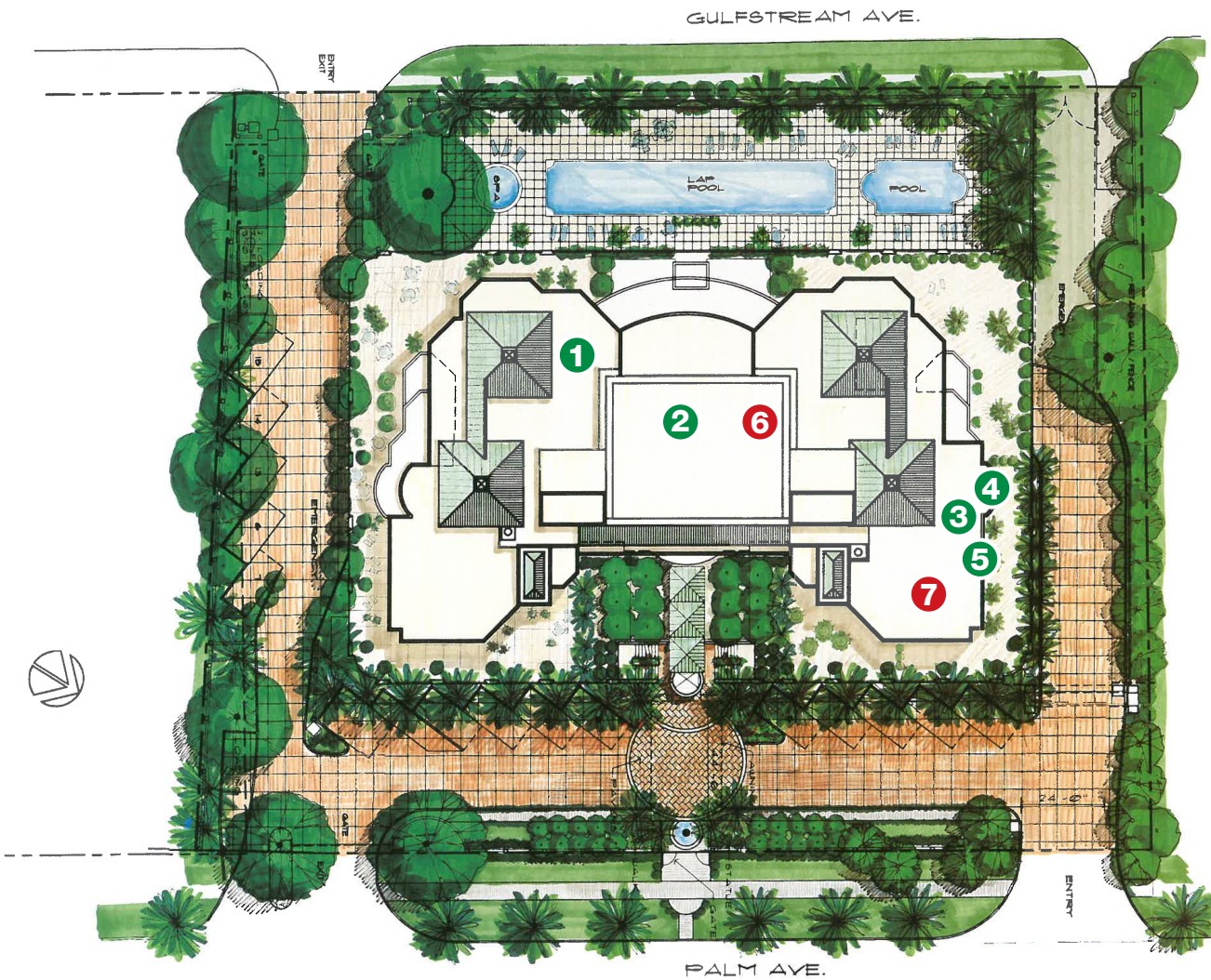


## SARABANDE

### ► Comparative Market Analysis, January 2024

**ACTIVE  
PENDING  
SOLD**



### ACTIVE LISTINGS

	Address	Unit	Furnishings	Sq Ft Heated	List Price	LP/SqFt	Parking
①	340 S Palm Ave	121	Unfurnished	1,836	\$1,950,000	\$1,062	2
②	340 S Palm Ave	33	Unfurnished	2,437	\$2,470,000	\$1,014	2
③	340 S Palm Ave	15	Unfurnished	2,761	\$1,975,000	\$715	2
④	340 S Palm Ave	PL1	Optional	2,313	\$2,650,000	\$1,146	1
⑤	340 S Palm Ave	945	Unfurnished	4,534	\$4,100,000	\$904	2

### SALE PENDING

Address	Unit	Furnishings	Sq Ft Heated	Parking	List Price	LP/SqFt
There are currently no pending sales						

### SOLD PROPERTIES (last 12 months)

	Address	Unit	Furnishings	Sq Ft Heated	Parking	Sold Price	SP/SqFt	Sold Date	Days to Close
⑥	340 S Palm Ave	53	Unfurnished	2,437	1	\$2,500,000	\$1,026	11/7/2023	92
⑦	340 S Palm Ave	75	Unfurnished	2,761	2	\$2,500,000	\$905	1/31/2023	262



The property information herein is derived from various sources that may include, but not be limited to, county records and the Multiple Listing Service, and it may include approximations. Although the information is believed to be accurate, it is not warranted and you should not rely upon it without personal verification. Affiliated real estate agents are independent contractor sales associates, not employees. ©2024 Coldwell Banker. All Rights Reserved. Coldwell Banker and the Coldwell Banker logo are trademarks of Coldwell Banker Real Estate LLC. The Coldwell Banker® System is comprised of company owned offices which are owned by a subsidiary of Anywhere Advisors LLC and franchised offices which are independently owned and operated. The Coldwell Banker System fully supports the principles of the Fair Housing Act and the Equal Opportunity Act. Based on information from the Multiple Listing Service for the period January 31, 2023 through January 31, 2024.



View our properties on: [pettingell.com](http://pettingell.com)

Non-Solicitation Disclaimer

If your property is currently listed, please disregard. It is not our intention to solicit properties that are already represented by another broker.