

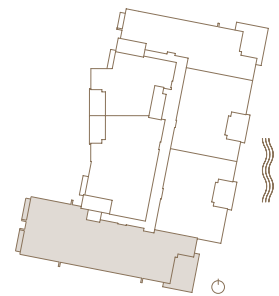
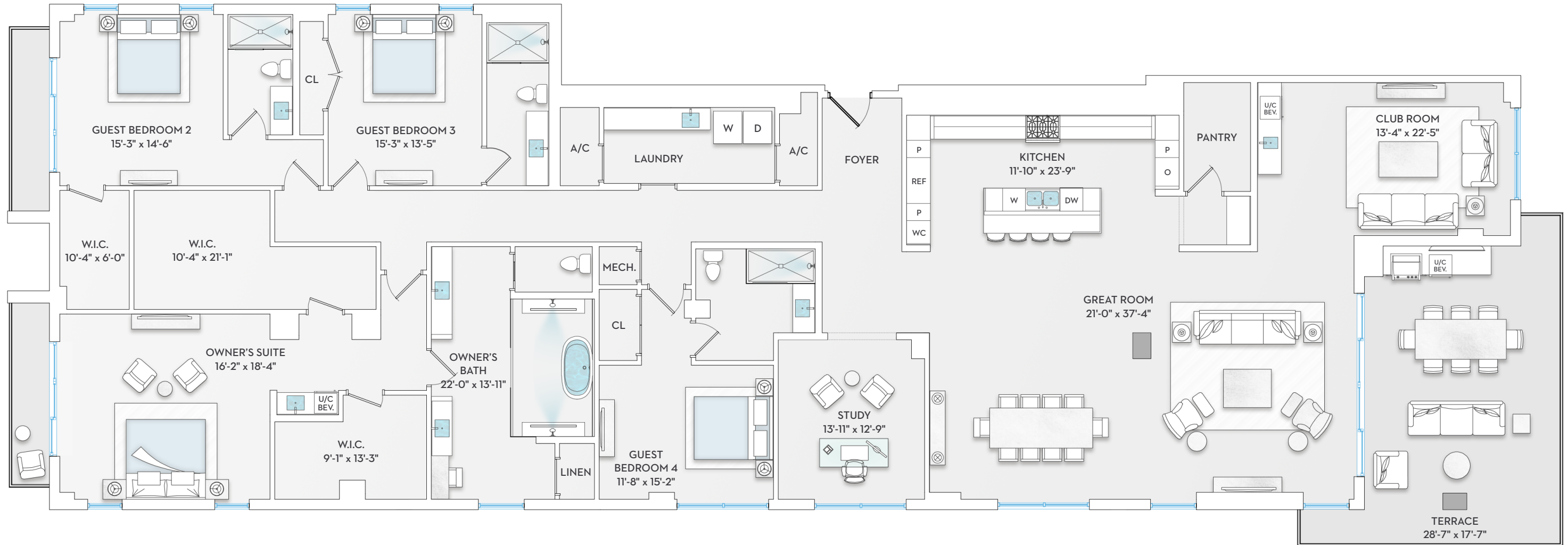
# RESIDENCE 01

East

4 Bedrooms + Den    Interior 4,741 sqft  
 4 Bathrooms        Exterior 589 sqft  
 Total 5,330 sqft



GULF SHORE  
 NAPLES



ORAL REPRESENTATIONS CANNOT BE RELIED UPON AS CORRECTLY STATING THE REPRESENTATIONS OF THE DEVELOPER. FOR CORRECT REPRESENTATIONS, MAKE REFERENCE TO THIS BROCHURE AND TO THE DOCUMENTS REQUIRED BY SECTION 718.503, FLORIDA STATUTES, TO BE FURNISHED BY A DEVELOPER TO A BUYER OR LESSEE. Stated interior square footage is measured to the exterior face of exterior walls and to the centerline of interior demising walls or to the exterior face of walls adjoining corridors or other common elements without excluding areas that may be occupied by columns or other structural components. This method of measurement varies from, and is larger than, the dimensions that would be determined by using the description and the definition of the Unit set forth in the Declaration (which generally only includes the interior airspace between the perimeter walls and excludes structural components). For reference, the area of the unit, determined in accordance with the unit boundaries set forth in the Declaration is set forth in Exhibit "3" to the Declaration. All dimensions are approximate and may vary with actual construction. Note that the stated interior square footage includes a portion of the Unit which is a non-contiguous storage closet located in the core of the building which is not depicted herein. See Exhibit "2" to the Declaration for the location and dimensions of the non-contiguous storage closet which is part of the Unit and included in the interior square footage described here in.

FLOORS 2-7

# RESIDENCE 02

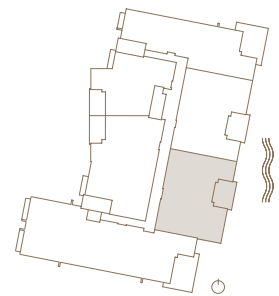
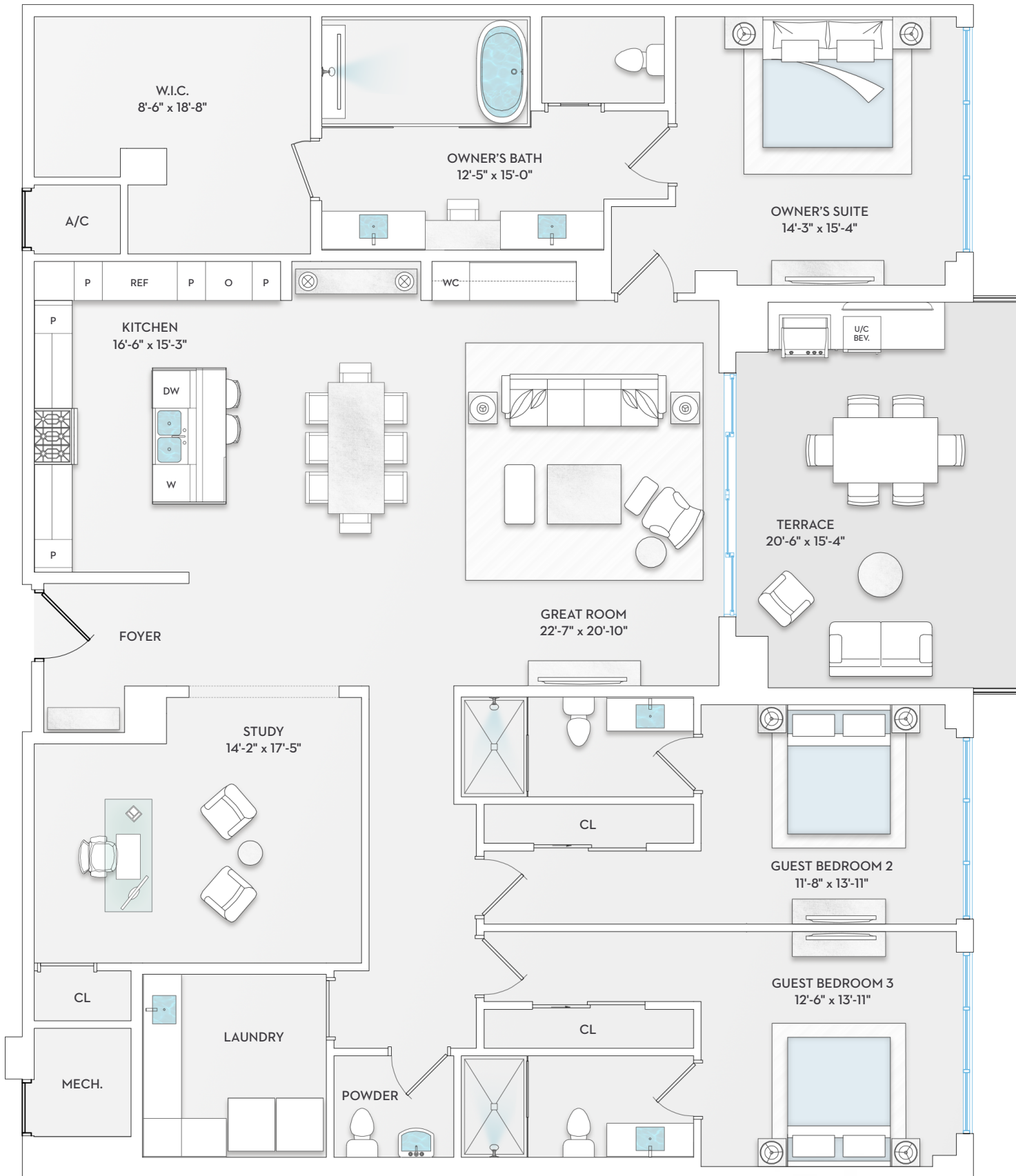
East

3 Bedrooms + Den  
3.5 Bathrooms

Interior 2,869 sqft  
Exterior 315 sqft  
Total 3,184 sqft

# 3300

## GULF SHORE NAPLES



PROJECT ADDRESS 3300 Gulf Shore Blvd N, Naples, FL 34102

SALES GALLERY 1400 Gulf Shore Blvd N, Suite 166, Naples, FL 34102

3300GULFSHORE.COM | 239.300.9495

**KOLTERURBAN**

ORAL REPRESENTATIONS CANNOT BE RELIED UPON AS CORRECTLY STATING THE REPRESENTATIONS OF THE DEVELOPER. FOR CORRECT REPRESENTATIONS, MAKE REFERENCE TO THIS BROCHURE AND TO THE DOCUMENTS REQUIRED BY SECTION 718.503, FLORIDA STATUTES, TO BE FURNISHED BY A DEVELOPER TO A BUYER OR LESSEE. Stated interior square footage is measured to the exterior face of exterior walls and to the centerline of interior demising walls or to the exterior face of walls adjoining corridors or other common elements without excluding areas that may be occupied by columns or other structural components. This method of measurement varies from, and is larger than, the dimensions that would be determined by using the description and the definition of the Unit set forth in the Declaration (which generally only includes the interior airspace between the perimeter walls and excludes structural components). For reference, the area of the unit, determined in accordance with the unit boundaries set forth in the Declaration is set forth in Exhibit "3" to the Declaration. All dimensions are approximate and may vary with actual construction. Note that the stated interior square footage includes a portion of the Unit which is a non-contiguous storage closet located in the core of the building which is not depicted herein. See Exhibit "2" to the Declaration for the location and dimensions of the non-contiguous storage closet which is part of the Unit and included in the interior square footage described here in.

# RESIDENCE 03

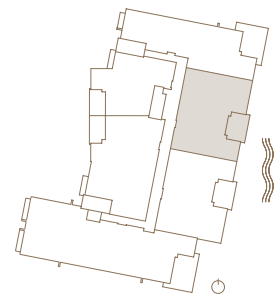
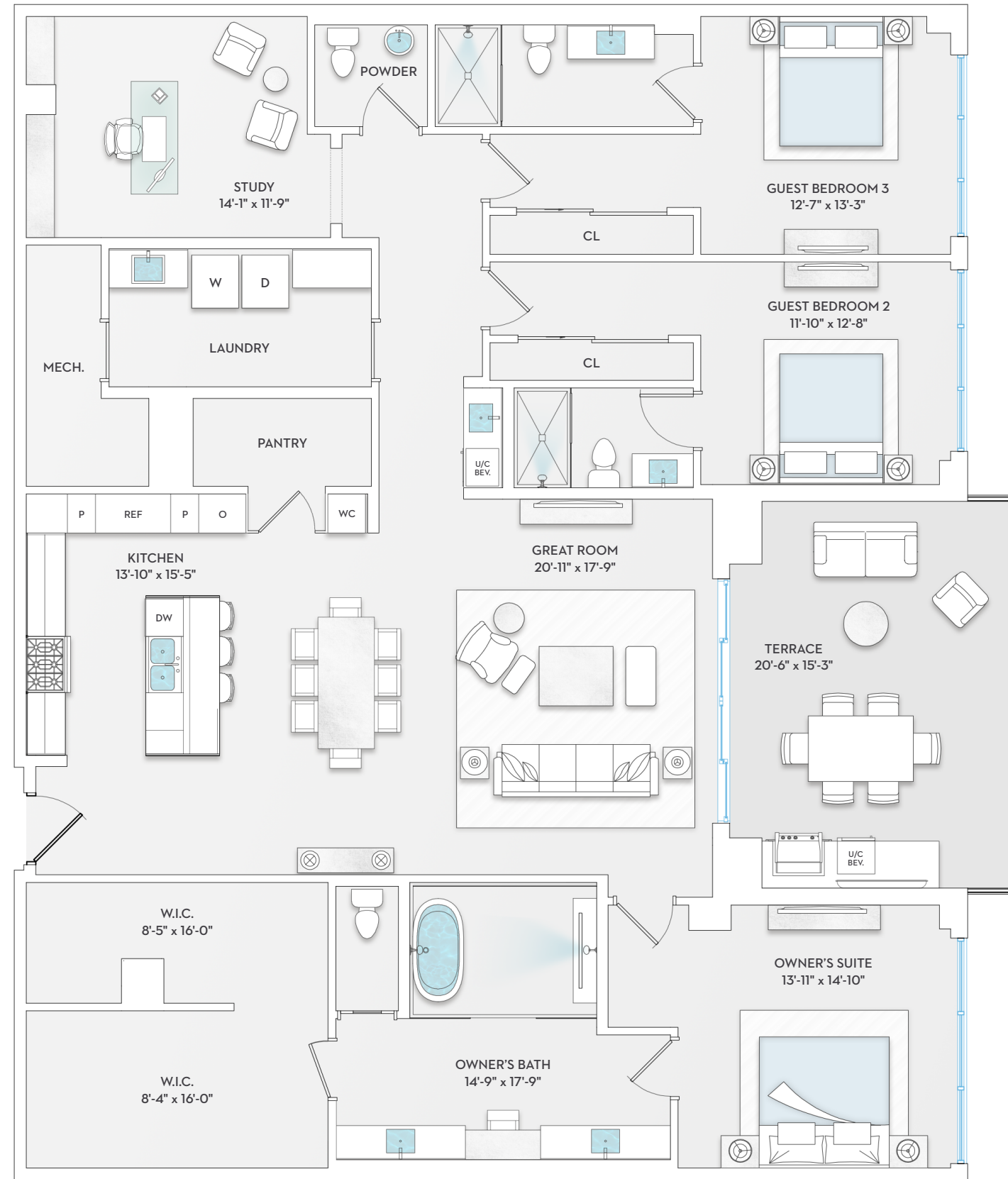
*East*

3 Bedrooms + Den  
3.5 Bathrooms

Interior 2,858 sqft  
Exterior 314 sqft  
Total 3,172 sqft



GULF SHORE  
NAPLES



ORAL REPRESENTATIONS CANNOT BE RELIED UPON AS CORRECTLY STATING THE REPRESENTATIONS OF THE DEVELOPER. FOR CORRECT REPRESENTATIONS, MAKE REFERENCE TO THIS BROCHURE AND TO THE DOCUMENTS REQUIRED BY SECTION 718.503, FLORIDA STATUTES, TO BE FURNISHED BY A DEVELOPER TO A BUYER OR LESSEE. Stated interior square footage is measured to the exterior face of exterior walls and to the centerline of interior demising walls or to the exterior face of walls adjoining corridors or other common elements without excluding areas that may be occupied by columns or other structural components. This method of measurement varies from, and is larger than, the dimensions that would be determined by using the description and the definition of the Unit set forth in the Declaration (which generally only includes the interior airspace between the perimeter walls and excludes structural components). For reference, the area of the unit, determined in accordance with the unit boundaries set forth in the Declaration is set forth in Exhibit "3" to the Declaration. All dimensions are approximate and may vary with actual construction. Note that the stated interior square footage includes a portion of the Unit which is a non-contiguous storage closet located in the core of the building which is not depicted herein. See Exhibit "2" to the Declaration for the location and dimensions of the non-contiguous storage closet which is part of the Unit and included in the interior square footage described here in.

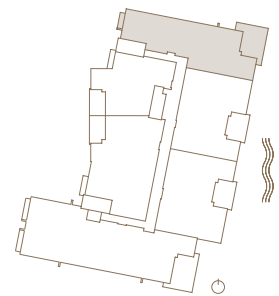
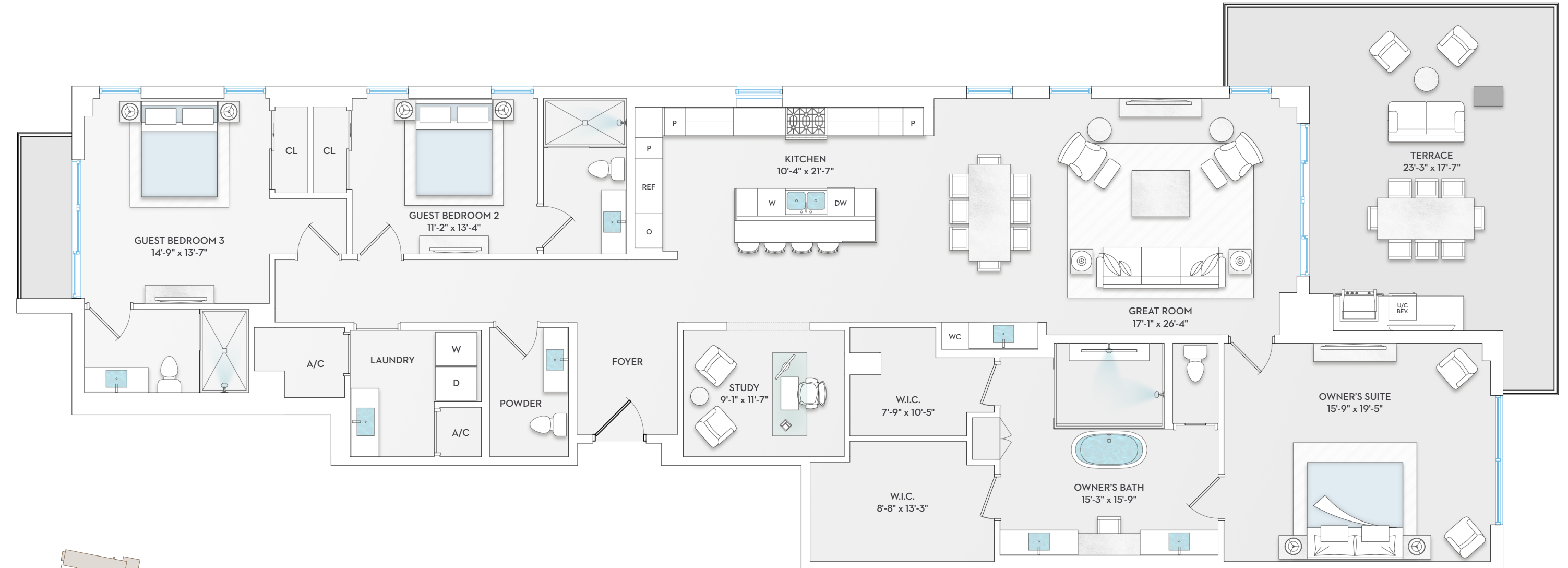
# RESIDENCE 04

East

3 Bedrooms + Den  
 3.5 Bathrooms  
 Interior 2,830 sqft  
 Exterior 525 sqft  
 Total 3,355 sqft



GULF SHORE  
NAPLES



# RESIDENCE 05

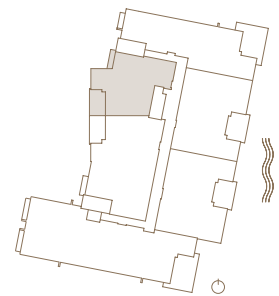
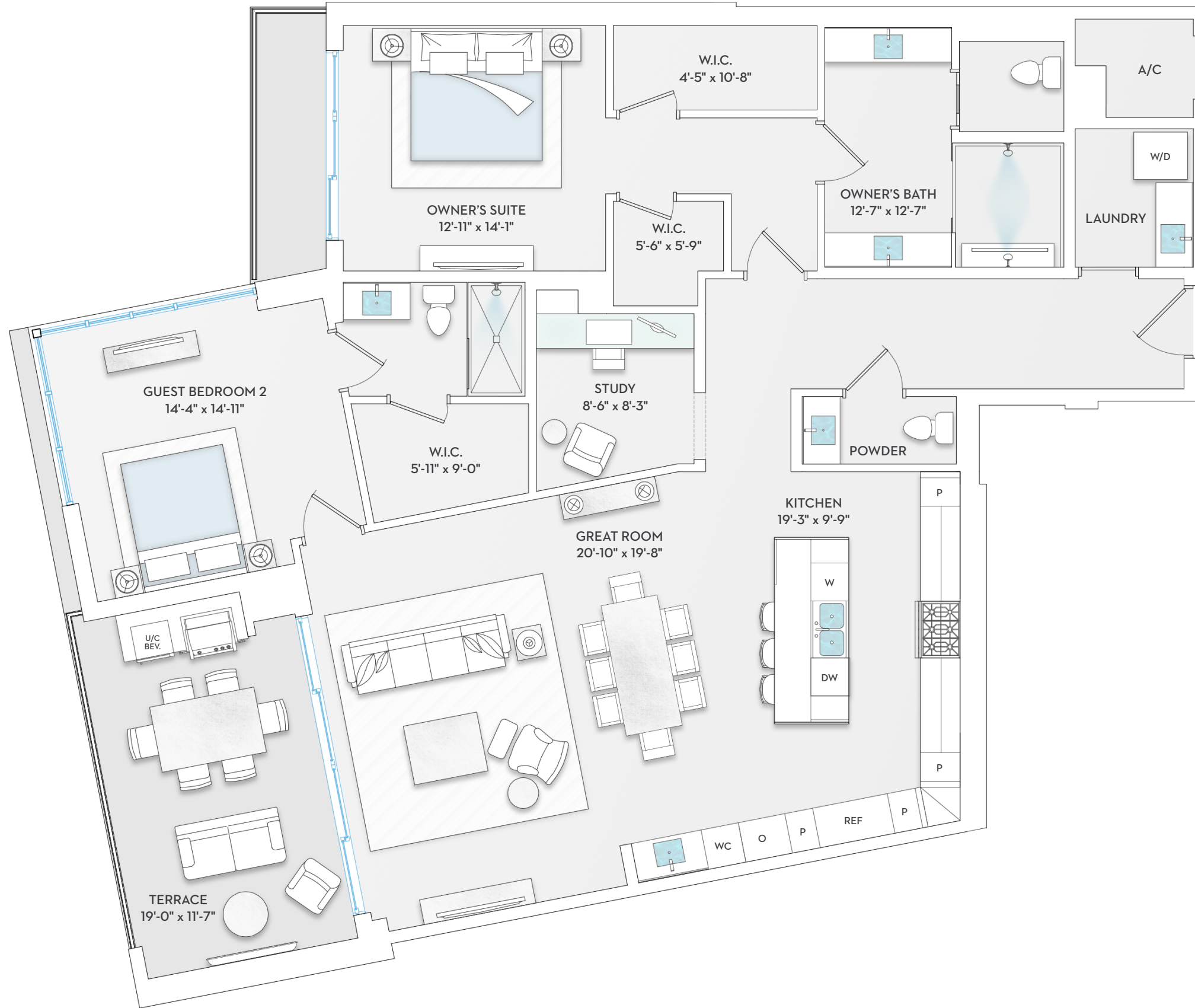
East

2 Bedrooms + Den  
2.5 Bathrooms

Interior 1,998 sqft  
Exterior 287 sqft  
Total 2,285 sqft

# 3300

## GULF SHORE NAPLES



# RESIDENCE 06

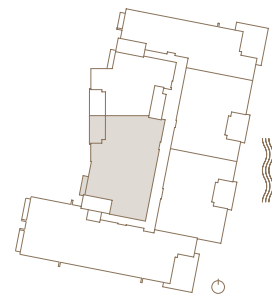
East

3 Bedrooms + Den  
3.5 Bathrooms

Interior 3,283 sqft  
Exterior 302 sqft  
Total 3,585 sqft



GULF SHORE  
NAPLES



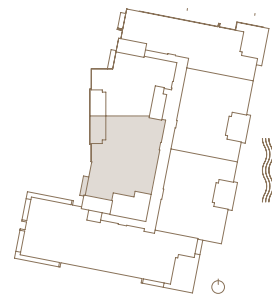
FLOOR 2

# RESIDENCE 6A

*East*

2 Bedrooms + Den  
2.5 Bathrooms

Interior 2,810 sqft  
Exterior 302 sqft  
Total 3,112 sqft



# 3300

## GULF SHORE NAPLES

PROJECT ADDRESS 3300 Gulf Shore Blvd N, Naples, FL 34102

SALES GALLERY 1400 Gulf Shore Blvd N, Suite 166, Naples, FL 34102

3300GULFSHORE.COM | 239.300.9495

**KOLTERURBAN**

ORAL REPRESENTATIONS CANNOT BE RELIED UPON AS CORRECTLY STATING THE REPRESENTATIONS OF THE DEVELOPER. FOR CORRECT REPRESENTATIONS, MAKE REFERENCE TO THIS BROCHURE AND TO THE DOCUMENTS REQUIRED BY SECTION 718.503, FLORIDA STATUTES, TO BE FURNISHED BY A DEVELOPER TO A BUYER OR LESSEE. Stated interior square footage is measured to the exterior face of exterior walls and to the centerline of interior demising walls or to the exterior face of walls adjoining corridors or other common elements without excluding areas that may be occupied by columns or other structural components. This method of measurement varies from, and is larger than, the dimensions that would be determined by using the description and the definition of the Unit set forth in the Declaration (which generally only includes the interior airspace between the perimeter walls and excludes structural components). For reference, the area of the unit, determined in accordance with the unit boundaries set forth in the Declaration is set forth in Exhibit "3" to the Declaration. All dimensions are approximate and may vary with actual construction. Note that the stated interior square footage includes a portion of the Unit which is a non-contiguous storage closet located in the core of the building which is not depicted herein. See Exhibit "2" to the Declaration for the location and dimensions of the non-contiguous storage closet which is part of the Unit and included in the interior square footage described here in.

# RESIDENCE 07

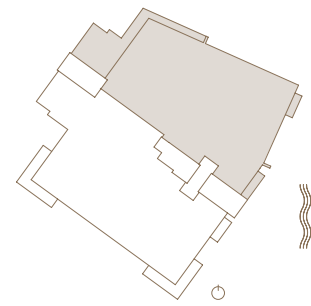
West

3 Bedrooms + Den  
3.5 Bathrooms

Interior 4,054 sqft  
Exterior 670 sqft  
Total 4,724 sqft



GULF SHORE  
NAPLES



# RESIDENCE 08

West

3 Bedrooms + Den  
3.5 Bathrooms

Interior 4,040 sqft  
Exterior 793 sqft  
Total 4,833 sqft



GULF SHORE  
NAPLES

