



WILLIAM
MEANS

WELCOME TO
CHARLESTON

YOUR GUIDE TO RELOCATING TO THE LOWCOUNTRY



WE ARE WILLIAM MEANS REAL ESTATE

William Means Real Estate has deep roots in the Lowcountry – proudly offering premier homes and unprecedented service to buyers and sellers since 1933. We love our hometown; we understand its heart and soul, its distinctive charms and unparalleled ambiance. Most importantly, we are committed to matching Charleston’s vitality and energy with our passion for bringing you the best.

Whether you are planning for a short residency or looking to buy your family or retirement dream home, relocating to the other side of town, across the country or around the world, William Means will help make your relocation a seamless transition. From determining which neighborhoods most suit your needs, to arranging tours, providing rental or moving assistance, or evaluating market trends – our team is ready to be of assistance.

William Means Real Estate is one of Charleston’s oldest and most established real estate firms. Our agents offer a specialization in fine properties, affirming our long-standing record of first-rate service. Our company was founded on the principles of integrity and professionalism – which is why our agents provide the best service experience when buying your Charleston home.

We hope you enjoy learning more about this wonderful place that we are honored to call home. For more information about relocating to Charleston or if you have specific questions about our slice of paradise, contact William Means Real Estate today or visit us online at charlestonrealestate.com.



LET US SHOW YOU WHAT IT MEANS TO CALL THE LOWCOUNTRY HOME.

Thinking of moving to Charleston? You're making a terrific choice. Glorious beaches and marshes teeming with wildlife, outstanding cuisine, gracious hospitality among neighbors, unique communities overflowing with character, historic and artistic traditions and top medical facilities – these are just a few of the reasons people choose to make Charleston their home.

The Lowcountry offers a mild and beautiful climate, with monthly temperatures averaging in the mid-60's to low 80's for seven months of the year. This mild weather equates to more time in the sun, whether at the beach, on your boat, playing with your children at one of the many public parks or sipping sweet tea at an outdoor café.

In addition to the beaches and iconic historic sites we are known for, Charleston is home to minor league baseball, soccer and hockey teams. Residents also enjoy some of the best golf courses and tennis courts in the world. You will never run out of things to do in Charleston.





To Summerville

Northwoods Blvd.

Aviation Ave.

North Charleston
(see North Charleston map)

Daniel Island

Charleston International Airport

Rivers Ave.

26

Montague Ave.

61

526

171

7

Charleston



Magrath Darby Blvd.

Houston Northcutt

17

Ripley Point Rd.

James Island

20

Main Rd.

Johns Island

Maybank Hwy.

171

Folly

Charleston Executive Airport

Bohicker Rd.

700

River Rd.

Kiawah Island

Seabrook Island

Edisto Island



FAQ: “How close to the airport?”

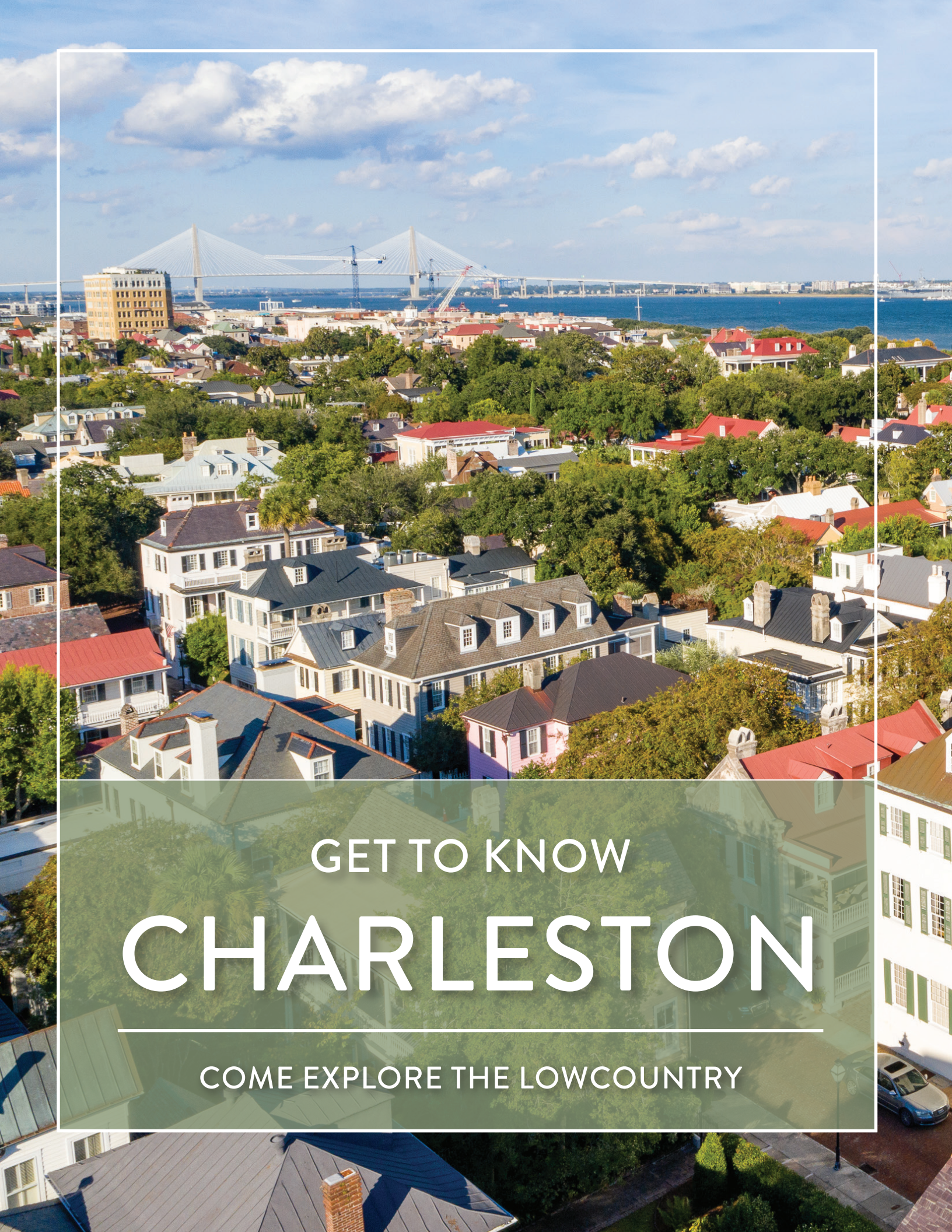
HISTORIC CHARLESTON.....	11 MILES
MOUNT PLEASANT	17 MILES
ISLE OF PALMS	23 MILES
SULLIVAN’S ISLAND.....	20 MILES
DANIEL ISLAND	11 MILES
WEST ASHLEY	10 MILES
JAMES ISLAND	16 MILES
JOHNS ISLAND	20 MILES
KIAWAH & SEABROOK ISLANDS.....	34 MILES
SUMMERVILLE	18 MILES
NORTH CHARLESTON	< 1 MILE
GOOSE CREEK	11 MILES
MONCK’S CORNER	28 MILES

Distances are approximate.



William Means Offices

Beach



GET TO KNOW
CHARLESTON

COME EXPLORE THE LOWCOUNTRY

CHARLESTON AT A GLANCE

AREA RESIDENTS

#3

LARGEST COUNTY
IN S.C.

33

NEW REGIONAL
RESIDENTS EACH DAY

38

AVERAGE
RESIDENT AGE

TEMPERATURE & CLIMATE

76°F

ANNUAL
HIGH

56°F

ANNUAL
LOW

2,993

ANNUAL HOURS
OF SUNSHINE

MAJOR EMPLOYERS

JOINT BASE CHARLESTON	22,000
MEDICAL UNIVERSITY OF SOUTH CAROLINA	16,000
ROPER ST. FRANCIS HEALTHCARE	6,000
CHARLESTON COUNTY SCHOOL DISTRICT	5,900
THE BOEING COMPANY	5,700



CHARLESTON AREAS

HISTORIC CHARLESTON

Bordered by the Ashley and Cooper Rivers, Charleston is a city known for its elegance, hospitality, genteel beauty and historic significance. Dating back to 1670, Charleston was the first English settlement to be established south of Virginia. Today, Charleston has the largest concentration of pre-Revolutionary homes in the country. These stand alongside the stately mansions of the antebellum period and together they represent the finest architecture of the past—Adamesque, Neoclassical, Charleston Single house, Greek Revival, Roman Ionic, Gothic Revival and Italianate. Living in conjunction with fabled history, you will discover many five-star restaurants, excellent performing arts and a lively nightlife. Voted the Best City in the World by Travel + Leisure, nowhere else can you find a lifestyle so beautifully preserved.

MOUNT PLEASANT

To the east of downtown Charleston, across the Ravenel Bridge, lies the thriving coastal town of Mount Pleasant. With a population of approximately 86,000 (USCB), this town is a dynamic community committed to progress and economic development. The Old Village of Mount Pleasant is a National Historic District consisting of gracious antebellum homes, and offering a breathtaking view of the Charleston Harbor and historical Fort Sumter. Marshes, creeks and rivers offer both recreational and scenic enjoyment. Popular Shem Creek is lined with fishing charter yachts, seafood restaurants and shrimping trawlers. Mount Pleasant's history, natural beauty and friendly citizens make this town a wonderful destination for a lifetime of quality living.

ISLE OF PALMS

The Isle of Palms, with its seven miles of wide, pristine beach, is a wonderfully attractive place to call home, as well as a popular vacation destination. The Island's summer season temperature averages 74 degrees from April to October. The Isle of Palms, a completely self-contained city, was incorporated in 1953 and has its own Public Works Department. This area is home to the famous Wild Dunes Resort, which boasts not only year-round homes and fabulous vacation rentals, but also has two magnificent 18-hole championship golf courses designed by Tom Fazio. Its Ocean Course is ranked among the "World's Greatest 100" by Golf Magazine. Tennis is also available in the Dunes "Top 50" tennis center, as well as municipal courts.



SULLIVAN'S ISLAND

To the south of Isle of Palms, lies Sullivan's Island, home of Historic Fort Moultrie, site of the largest sea battle of the Revolutionary War. This attractive sea island community has maintained the heart of a small town. With its uncrowded, pristine beaches, award-winning elementary school, unique historic feel and emphasis on family and community, Sullivan's Island is an ideal place for one to call home.

DANIEL ISLAND

Established in 1995, Daniel Island is the area's newest town and is quickly becoming an old favorite. Surrounded by rivers and creeks, this area is very family friendly with tree-lined streets, several parks and a quaint downtown. All the necessities of life, schools, shopping and restaurants are close by. Along with a wonderful appeal for homeowners, the island has become home to several corporate headquarters and plays host to the WTA tennis tournament each spring.

WEST ASHLEY

To the west of the Charleston Peninsula, and bordered by the Ashley and Stono Rivers and Intracoastal Waterway, lies the suburb of West Ashley. Charles Towne Landing, the first English settlement in South Carolina founded in 1670, is located here. West Ashley is also home to three magnificent plantations: Drayton Hall, Magnolia Plantation and Gardens, America's oldest garden (c. 1685) and Middleton Place. While West Ashley is easily accessible to downtown Charleston, and boasts a variety of restaurants, shops and businesses all its own, it still manages to retain an elegant Old South image.

JAMES ISLAND

James Island is a large sea island framed by Wappoo Creek and Charleston Harbor to the north, Morris Island and Folly Beach to the east, and the Stono River and Johns Island to the west. This close-knit community is surrounded by beautiful scenic views. James Island County Park offers green space, jogging and cycling trails, picnic areas, campgrounds and a popular fishing pier and dog park. Golfers can play at the Municipal Golf Course on the corner of Riverland Drive and Maybank Highway, or apply for membership at The Country Club of Charleston, home of the first golf club ever established in the United States.



CHARLESTON AREAS

JOHNS ISLAND

Canopied by century old oaks, this rural community is nestled between Charleston and the resort islands of Kiawah and Seabrook. Residents appreciate the natural beauty and serenity of the coastal country setting and have worked hard over the years to protect the island from being over-developed. Mullet Hall Equestrian Center attracts horse lovers from all over the area, with its 738 acres and 20 miles of riding trails. The center hosts tournaments throughout the year and is open to the public. Another popular attraction on Johns Island is the Angel Oak – a visually stunning live oak tree that is believed to be more than 400 years old.

KIAWAH ISLAND & SEABROOK ISLAND

Only 30 minutes south of Charleston, Kiawah and Seabrook Islands are private residential resort communities known for their top-rated recreation facilities, unspoiled beaches and high-end real estate. Kiawah is a world-renowned resort with a blend of full-time residents, secondary homeowners and vacationers. The island is home to world-class tennis facilities and five championship golf courses, including the Ocean Course – a breathtaking course that consistently ranks among the world’s finest. In addition to golf, tennis, and boating, Seabrook offers a full-service equestrian center with trails leading to the beach. The island affords a relaxed and peaceful way of life.

NORTH CHARLESTON

Known as South Carolina’s retail leader, North Charleston offers the best shopping in the state and is home to Tanger Outlets, Northwoods Mall and several small neighborhood boutiques. Not only is North Charleston a great place to work and shop, the city offers numerous places to play, the Coliseum/Convention Center Complex, scenic Riverfront Park and the North Charleston City Gallery. Up-and-coming Park Circle has a lively dining and nightlife scene centered on East Montague Avenue, including shows at South of Broadway theater and a craft brewery.



GOOSE CREEK

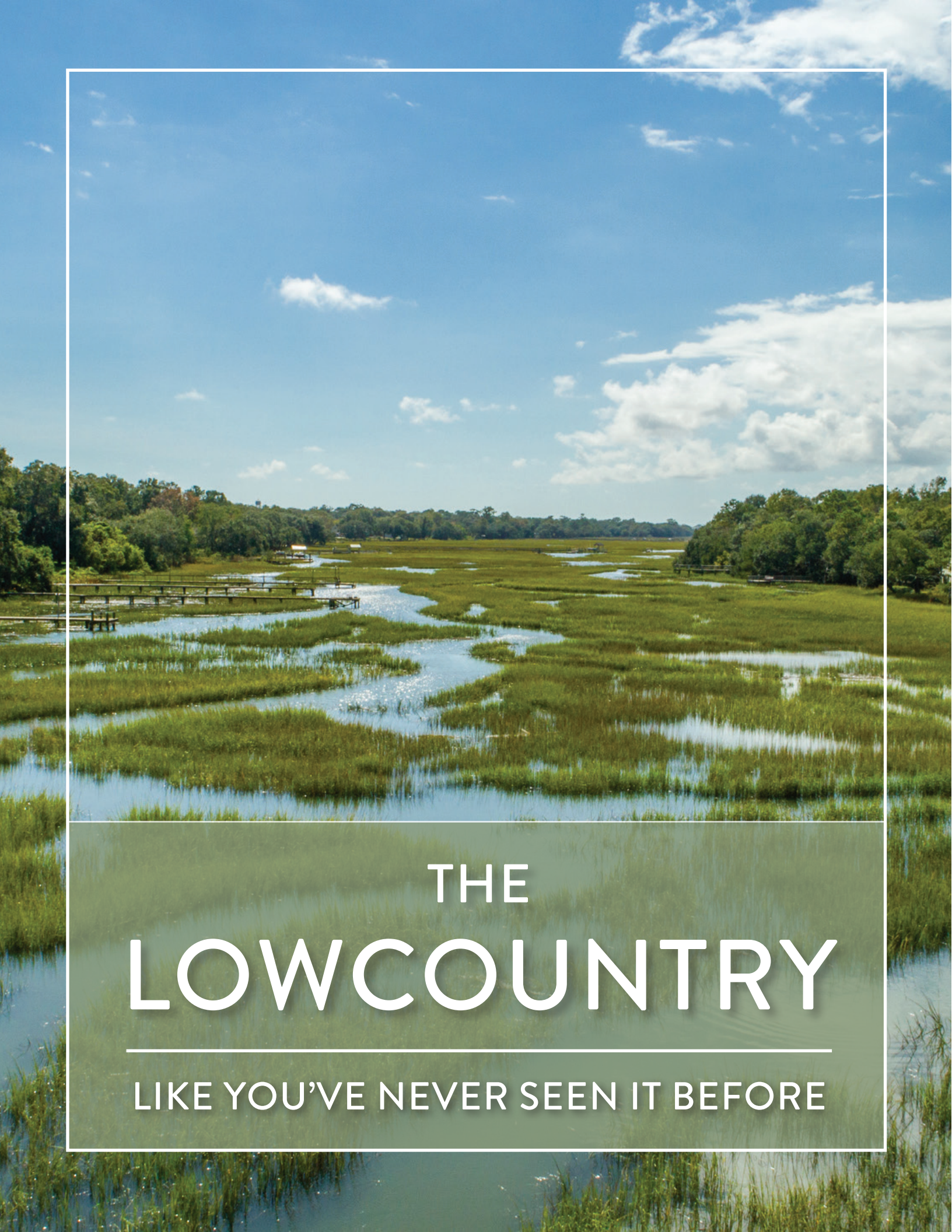
Located in the southern end of Berkeley County, Goose Creek offers residents a place to live, work and play. Established as a city in 1961, the area is rich in history and surrounded by the natural treasures of the Lowcountry. Medway Plantation, dating to 1686, consists of just under 6,700 acres and is listed on the National Register of Historic Places. Goose Creek offers a small town character with a variety of local businesses, but is also home to multi-national corporations. The City of Goose Creek was named Money Magazine’s “Best Places to Live in the United States” and is located approximately 20 miles from Charleston.

MONCKS CORNER

With 10,743 residents (USCB), Moncks Corner is known for great weather and old-fashioned hospitality. The town was named after landowner Thomas Monk and began as a trading post with a few taverns and stores. Moncks Corner is now abundant in natural attractions such as Cypress Gardens, Mepkin Abbey and Old Santee Canal State Park. It is truly a naturally beautiful town full of recreation.

SUMMERVILLE

The town of Summerville – located approximately 20 miles northwest of Charleston – has undergone tremendous growth in the past 15 years yet still maintains its small-town appeal. Originally settled in the 18th century as an escape from the summer heat that plagued the coast, Summerville is known for its public schools, strong sense of community and quaint downtown area. Residents and visitors enjoy charming boutiques, antique stores and restaurants centered around an old-fashioned town square. The annual Flowertown Festival draws large crowds in the spring, but on a crisp Friday evening in the fall, you’re likely to see your neighbors at the Summerville High School football games – home of John McKissick, the winningest high school coach in the United States.



THE
LOWCOUNTRY

LIKE YOU'VE NEVER SEEN IT BEFORE

EXPERIENCE THE CHARLESTON LIFESTYLE LIKE A LOCAL.

The Lowcountry lifestyle is truly one-of-a-kind as it offers something for everyone. Each area of our wonderful hometown has its own unique pulse that makes Charleston the thriving community that it is today. Though our city is steeped in history, it continues to evolve and innovate with each new person that decides it is the perfect place to call it home.

As you explore the next few pages of our relocation guide, you will see a glimpse of how to experience Charleston like a local. From visiting museums, spending a day at the beach or exploring one of our historic parks and gardens - there is always a new place to see. With gorgeous year-round weather, it's easy to try new activities like golf, tennis or sailing no matter the season.

If the arts are more your style, you're in luck as local festivals take place almost every month of the year. Pop into one of our favorite art galleries or spend an evening enjoying a show at the historic Dock Street Theatre or Gaillard Center. Come with us to discover the Lowcountry like you've never seen it before.





HISTORIC SITES & MUSEUMS

THE CHARLESTON MUSEUM

360 Meeting Street, Charleston.
843-722-2996
www.charlestonmuseum.org

CHILDREN'S MUSEUM OF THE LOWCOUNTRY

25 Ann Street, Charleston.
843-853-8962
www.explorecmll.org

FORT MOULTRIE

1214 Middle Street, Sullivan's Island.
843-883-3123
www.nps.gov/fosu/learn/historyculture/fort_moultrie.htm

FORT SUMTER

Charleston Harbor
843-883-3123
www.nps.gov/fosu

INTERNATIONAL AFRICAN AMERICAN MUSEUM

Under Construction
www.africanamericancharleston.com

THE MUSEUM AT MARKET HALL

188 Meeting Street, Charleston.
843-723-1541
www.museumatmarkethall.com

OLD EXCHANGE AND PROVOST DUNGEON

122 East Bay Street, Charleston.
843-727-2165 or 1-888-763-0448
www.oldexchange.org

OLD SLAVE MART MUSEUM

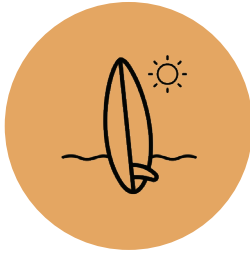
6 Chalmers Street, Charleston. 843-958-6467.
www.oldslavemartmuseum.com

PATRIOTS POINT NAVAL & MARITIME MUSEUM

40 Patriots Point Road, Mt. Pleasant.
843-884-2727
www.patriotspoint.org

Visit www.charlestoncvb.com for even more
recommendations.





PUBLIC BEACHES

EDISTO BEACH STATE PARK

8377 State Cabin Road, Edisto Island.
843-869-2756
www.southcarolinaparks.com

FOLLY BEACH COUNTY PARK

1100 W. Ashley Avenue, Folly Beach.
843-769-9960
www.ccprc.com/61/Folly-Beach-County-Park

ISLE OF PALMS COUNTY PARK

1-14th Avenue, Isle of Palms.
843-762-9957
www.ccprc.com/60/Isle-of-Palms-County-Park

KIAWAH BEACHWALKER PARK

8 Beachwalker Drive, Kiawah Island.
843-762-9964
www.ccprc.com/1411/Kiawah-Beachwalker-Park



RECREATION

GOLF

For a full list of Charleston-area courses, visit
www.charlestongolfguide.com

TENNIS

For a full list of Charleston-area courts, visit
the Lowcountry Tennis Association.
www.lctatennis.org

SAILING

Charleston Race Week is one of the biggest
regattas on the East coast.
www.charlestoncommunitysailing.org
www.charlestonoceanracing.com





GARDENS & PLANTATIONS

THE BATTERY & WHITE POINT GARDENS

East Battery and Murray Boulevard, Charleston.
discoversouthcarolina.com

BOONE HALL PLANTATION & GARDENS

1235 Long Point Road, Mount Pleasant.
843-884-4371
www.boonehallplantation.com

DRAYTON HALL

3380 Ashley River Road, Charleston.
843-769-2600
www.draytonhall.org

MAGNOLIA PLANTATION & GARDENS

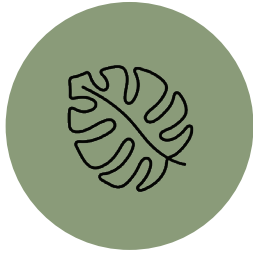
3550 Ashley River Road, Charleston.
843-571-1266
www.magnoliaplantation.com

MIDDLETON PLACE

4300 Ashley River Road, Charleston.
843-556-6020
www.middletonplace.org

PHILIP SIMMONS CHILDREN'S GARDEN

Corner of East Bay and Blake Streets, Charleston.
843-723-1259
www.philipsimmons.us



PARKS & NATURE CENTERS

CHARLES TOWNE LANDING STATE HISTORIC PARK

1500 Old Towne Road, Charleston.
843-852-4200
www.southcarolinaparks.com/charles-towne-landing

EDISTO ISLAND SERPENTARIUM

1374 Hwy. 174, Edisto Island.
843-869-1171
www.edistoserpentarium.com

JAMES ISLAND COUNTY PARK

871 Riverland Drive, Charleston.
843-406-6990 or 843-795-4386
www.ccprc.com

PALMETTO ISLANDS COUNTY PARK

444 Needlerush Parkway, Mount Pleasant.
843-406-6950 or 843-795-4386
www.ccprc.com

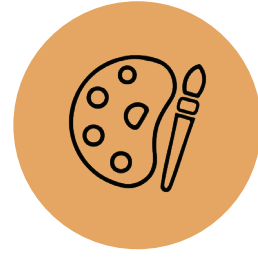
WANNAMAKER COUNTY PARK

8888 University Boulevard, North Charleston.
843-762-5585 or 843-795-4386
www.ccprc.com

WATERFRONT PARK

Near Concord Street and Vendue Range, Charleston.
www.charleston-sc.gov





VISUAL ARTS

CITY GALLERY AT WATERFRONT PARK

34 Prioleau Street, Charleston.
843-958-6484
www.citygalleryatwaterfrontpark.com

DOG & HORSE FINE ART

102 Church Street, Charleston.
843-577-5500
www.dogandhorsefineart.com

GIBBES MUSEUM OF ART

135 Meeting Street, Charleston.
843-722-2706
www.gibbesmuseum.org

GALLERY CHUMA

188 Meeting Street #N1, Charleston.
843-722-1702
www.gallerychuma.com

HALSEY INSTITUTE OF CONTEMPORARY ART

161 Calhoun Street, Charleston.
843-953-4422
www.halsey.cofc.edu

LOWCOUNTRY ARTISTS GALLERY

148 E Bay Street, Charleston.
843-577-9295
www.lowcountryartists.com

MEYER VOGL GALLERY

122 Meeting Street, Charleston.
843-805-7144
www.meyervogl.com
Photo credit Charlotte Elizabeth.

MOJA ARTS FESTIVAL

Annual celebration of African American and Caribbean arts.
843-724-7305
www.mojafestival.com

NORTH CHARLESTON CITY GALLERY

5001 Coliseum Drive, North Charleston.
843-308-4709
www.northcharleston.org



PERFORMING ARTS

THE ACTORS' THEATER OF SOUTH CAROLINA

Folly Beach.
843-696-2761
www.actorstheatrefsc.org

CHARLESTON SYMPHONY ORCHESTRA

2133 N Hillside Drive, Charleston.
843-723-7528
www.charlestonsymphony.com

THE DOCK STREET THEATRE

135 Church Street, Charleston.
843-577-7183
www.charlestonstage.com

FLOWERTOWN PLAYERS

133 S. Main Street, Summerville.
843-875-9251
www.flowertownplayers.org

FOOTLIGHT PLAYERS THEATRE

20 Queen Street, Charleston.
843-722-4487
www.footlightplayers.net

GAILLARD CENTER

95 Calhoun Street, Charleston.
843-724-5212
www.gaillardcenter.org

NORTH CHARLESTON COLISEUM & PERFORMING ARTS CENTER

5001 Coliseum Drive, North Charleston.
843-529-5000
www.northcharlestoncoliseum.com

PURE THEATRE

477 King Street, Charleston.
843-723-4444
www.puretheater.org

THEATRE 99

280 Meeting Street, Charleston.
843-853-6687
www.theatre99.com

WOOLFE STREET PLAYHOUSE

34 Woolfe Street, Charleston.
843-856-1579
www.woolfestreetplayhouse.com





CHARLESTON FESTIVALS

JANUARY

LOWCOUNTRY OYSTER FESTIVAL

In January more than 65,000 lbs. of oysters are brought in for the annual Lowcountry Oyster Festival. Live music and activities include an oyster shucking contest, oyster eating contest and a contest between local chefs. Boone Hall Plantation.

843-452-6088
www.boonehallplantation.com

FEBRUARY

SOUTHEASTERN WILDLIFE EXPOSITION

Known for its world-class original art, diverse exhibits and animal demonstrations, the annual Southeastern Wildlife Exposition kicks off in February with approximately 120 artists and more than 350 exhibitors. Various locations.

843-723-1748
www.sewe.com

MARCH

CHARLESTON WINE + FOOD FESTIVAL

Held each March, this festival celebrates the culinary history and culture of the Lowcountry. Foodies can enjoy more than 50 events during the four-day stretch, including a Sip and Stroll, a wine tasting, auction and a Gospel Brunch.

843-727-9998
www.charlestonwineandfood.com

APRIL

THE CHARLESTON FESTIVAL

Set amid the ambience of the city's Old & Historic District, this series of award-winning tours and events from the end of March into April showcases Charleston's distinctive architecture, history, gardens and culture. 40 East Bay Street.

843-722-3405
www.historiccharleston.org

COOPER RIVER BRIDGE RUN

Held in late March or early April each year, this event attracts a crowd of 40,000 and includes a 10K run and walk across the Cooper River on the Arthur Ravenel Jr. Bridge. It begins in Mount Pleasant and ends in downtown Charleston.

843-856-1949
www.bridgerun.com

SUMMERVILLE FLOWERTOWN FESTIVAL

This three-day event is held each spring and organized by the Summerville Family YMCA. Take in all of the flowers and hospitality and attend one of the largest arts and crafts festivals in the Southeast.

843-871-9622
www.summervilleymca.org



MAY

SPOLETO FESTIVAL USA

Held each spring since 1977, this 17-day festival features visual art exhibits and more than 120 performances from opera to jazz music. 843-722-2764; Box office: 843-579-3100
www.spoletousa.org

JUNE

PICCOLO SPOLETO

The City of Charleston's Piccolo Spoleto was created in 1979 to complement the international Spoleto Festival USA. The events are held over 17 days at a variety of locations in downtown Charleston and primarily feature artists and performers from the Southeast. 843-724-7305
www.piccolospoleto.com

JULY

FIREWORKS AT PATRIOT'S POINT

Celebrate the Fourth of July on board one of the most historic warships in the United States. Watch the fireworks blast and enjoy live music from the flight deck of the USS YORKTOWN on the Charleston Harbor at Patriots Point in Mount Pleasant. 843-884-2727
www.patriotspoint.org

SEPTEMBER

MOJA ARTS FESTIVAL

The annual MOJA Arts Festival is a celebration of African American and Caribbean arts and features music, visual art, storytelling, performances, crafts, children's activities and more. 843-724-7305
www.mojafestival.com

OCTOBER

TASTE OF CHARLESTON

This three-day event showcases Lowcountry restaurants and chefs and is hosted by the Greater Charleston Restaurant Association. Sample great food and enjoy the Iron Chef competition and art walk. Held at Boone Hall Plantation. 843-577-4030
www.lowcountryhospitalityassociation.com

DECEMBER

HOLIDAY FESTIVAL OF LIGHTS

Millions of sparkling lights at the James Island County Park will get you in the holiday spirit with more than 2 million lights and 600 light displays. The festival is open from November to just after New Years. 843-795-4386
www.holidayfestivaloflights.com

SEARCH ALL | DISCOVER CHARLESTON

Search City, Zip Code, or Area...

ADVANCED SEARCH | SEARCH

CHRISTIE'S INTERNATIONAL REAL ESTATE

WILLIAM MEANS

Begin Your SEARCH HERE

SEARCH

Search City, Zip Code, or Area...

BEDS: Any | BATHS: Any

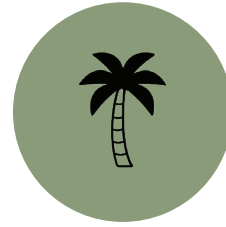
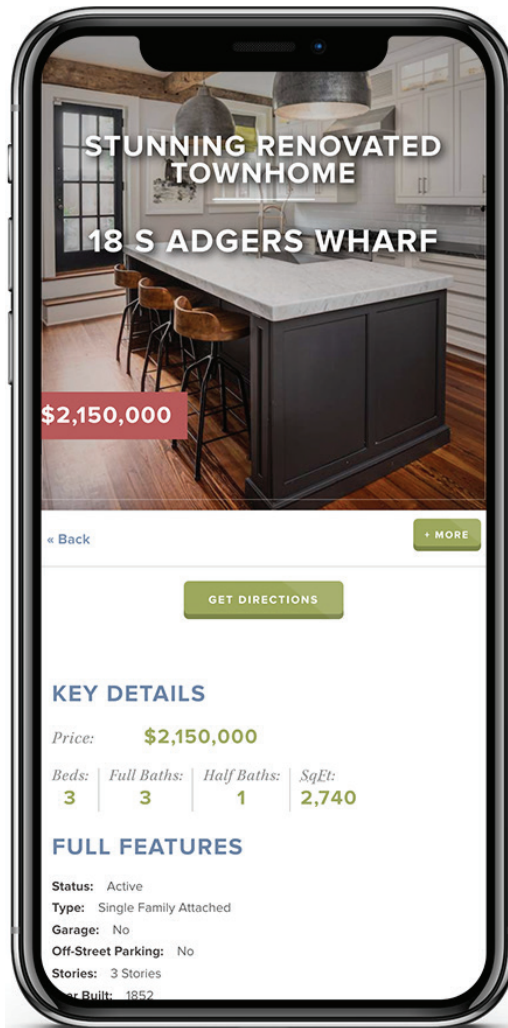
MIN PRICE: \$ No Min | MAX PRICE: \$ No Max

SHOW ADVANCED SEARCH

TAKE YOUR HOME SEARCH ONLINE

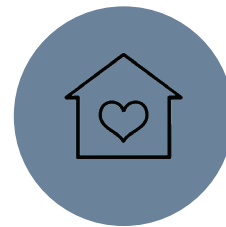
VISIT CHARLESTONREALESTATE.COM

TAKE YOUR HOME SEARCH ONLINE



EXPLORE THE LOWCOUNTRY

We have served this area since 1933 making us trusted local experts when it comes to choosing the location for your new home in Charleston. Discover the best features of the Lowcountry at charlestonrealestate.com, where you can search for homes and learn more about our area.



FIND A PLACE TO CALL HOME

From neighborhood profiles to our interactive map, there are many opportunities to learn about your new home in Charleston. Whether you want to be close to work, school, or the waterfront our innovative website can help you find the perfect neighborhood that will fit your lifestyle.



ADVANCED SEARCH CRITERIA

Our advanced search options will help you find a home that checks all of your boxes. Search by the basics like price, area or square footage. Dig deeper with advanced options like water views, a swimming pool, garage or elevator.



SAVE YOUR SEARCHES

Our Saved Search feature ensures that you won't miss out on homes that meet your needs. Receive daily emails with new homes on the market, price reductions and under contract listings. "Favorite" homes to come back and view them at a later time.

QUICK LINKS

ELECTRICITY AND NATURAL GAS

Dominion Energy
www.dominionenergy.com/south-carolina
Berkeley Electric Cooperative
www.berkeleyelectric.coop

Edisto Electric Cooperative
www.edistoelectric.com

Santee Cooper
www.santeecoop.com

COUNTY GOVERNMENTS

Berkeley County
www.berkeleycountysc.gov

Charleston County
www.charlestoncounty.org

Dorchester County
www.dorchestercountysc.gov

CHAMBERS OF COMMERCE

Berkeley County Chamber of Commerce
www.berkeleysc.org

Charleston Metro Chamber of Commerce
www.charlestonchamber.org

Greater Dorchester – Summerville Chamber of Commerce
www.greatersummerville.org

HOSPITALS

East Cooper Regional Medical Center
www.eastcoopermedctr.com

Hollings Cancer Center
www.hollingscancercenter.org

MUSC Children's Hospital
www.musckids.org

Bon Secours St. Francis Hospital
www.rsfh.com

Berkeley Hospital
www.rsfh.com/berkeley-hospital

Mount Pleasant Hospital
www.rsfh.com

Roper Hospital
www.rsfh.com

Trident Medical Center
www.tridenthealthsystem.com

Summerville Medical Center
www.tridenthealthsystem.com

AIRPORTS

Charleston International Airport
www.iflychs.com

Charleston Executive Airport
www.iflychs.com/JZI

TRASH/RECYCLING

Charleston County Garbage
www.charleston-sc.gov

Charleston County Recycling
www.recycle.charlestoncounty.org

Town of Mount Pleasant Garbage
www.tompsc.com/192/Garbage

Town of Mount Pleasant Recycling
www.tompsc.com/196/Recycling

PUBLIC SCHOOLS

Berkeley County School District
www.bcsdschools.net

Charleston County School District
www.ccsdschools.com

Dorchester County School District
www.dcps.k12.md.us

CHARTER SCHOOLS

Allegro Charter School of Music
www.allegrocharterschool.org

Carolina Voyager Charter School
www.carolinavoyager.org

Charleston Charter School for Math & Science
www.charlestonmathscience.org

Charleston Development Academy
www.developmentacademy.ccsdschools.com

East Cooper Montessori Charter
www.eastcooper.ccsdschools.com

Greg Mathis High School
www.ccsdschools.com/Domain/37

James Island Charter High School
www.jichs.ccsdschools.com

Orange Grove Elementary Charter School
www.ogecs.ccsdschools.com

PACE Charter School
www.pattisonsacademy.org

PRIVATE SCHOOLS

Addlestone Hebrew Academy
www.addlestone.org

Ashley Hall
www.ashleyhall.org

Bishop England High School
www.behs.com

Blessed Sacrament School
www.scbss.org

Cathedral Academy
www.cathedralacademy.com

Charleston Catholic School
www.charlestoncatholic.com

Charleston Christian School
www.charlestonchristian.org

Charleston Collegiate School
www.charlestoncollegiate.org

Charleston Day School
www.charlestondayschool.org

Charleston SDA School
www.charlestonsdaschool.com

Charles Towne Montessori School
www.charlestownemontessori.org

Divine Redeemer Catholic School
www.dracs.co

Faith Christian School
www.faithchristiansc.net

Ferndale Baptist School
www.fostercreekbaptist.org/fbs

First Baptist Church School
www.fbschool.org

First Baptist Church School of Mount Pleasant
www.fbcmtpleasant.org

James Island Christian School
www.jics.org

Mason Preparatory School
www.masonprep.org

Nativity School
www.nativity-school.com

QUICK LINKS

Northside Christian School
www.northsidecharleston.com

Northwood Academy
www.northwoodacademy.com

Owens Christian Academy
www.owenschristianacademy.com

Palmetto Christian Academy
www.palmettochristianacademy.org

Pinewood Preparatory School
www.pinewoodprep.com

Porter-Gaud School
www.portergaud.edu

Riverpointe Christian Academy
www.riverpointechristian.org

St. John Catholic School
saintjohncatholicsc.org

Summerville Catholic School
www.summervillecatholic.org

Trident Academy
www.tridentacademy.com

Trinity Montessori School
www.trinitymontessori.com

COLLEGES AND UNIVERSITIES

American College for the Building Arts
www.americancollegeofthebuildingarts.com

Charleston School of Law
www.charlestonlaw.edu

Charleston Southern University
www.csuniv.edu

The Citadel
www.citadel.edu

College of Charleston
www.cofc.edu

Culinary Institute of Charleston
www.tridenttech.edu

Embry-Riddle Aeronautical Institute
worldwide.erau.edu/charleston

Limestone College
www.limestone.edu

Lowcountry Graduate Center
www.lowcountrygradcenter.org

Medical University of South Carolina
www.musc.edu

Miller-Motte Technical College
www.miller-motte.edu

Moore School of Business
www.moore.sc.edu

Trident Technical Collage
www.tridenttech.edu

Webster University
www.webster.edu

CHARLESTON'S ACCOLADES



Charleston named as
“#4 Most Fun Place to
Live in the U.S.”

Forbes

Ranks Charleston as
#4 Best mid-size U.S. Metro
for Jobs in 2017

Inc.

Ranks Charleston a Top 5
“Best City to Start a Business
Right Now”

**TRAVEL+
LEISURE**

Names Charleston, SC
“Best City in the U.S.”

**Condé Nast
Traveler**

Names Charleston the #2
“Friendliest City in the U.S.”

Southern Living

Names Charleston the
“South’s Best City”

**NATIONAL
ASSOCIATION OF
REALTORS®**

Names Charleston one of the
“Top Ten Markets During
and Post-Covid”

LET OUR AGENTS HELP YOU CALL CHARLESTON HOME



Lyles Geer
843.793.9800



Helen Geer
843.224.7767



Leslie Anderson
843.749.3987



Georgia Bell
843.568.1601



Beverly Burris
843.343.1791



Helen Butler
843.343.2222



Meghan Chipley
843.709.8056



Etta Connolly
843.568.0449



**Anne Merrill
Crawford**
843.991.0524



Marisa Cromey
843.801.3889



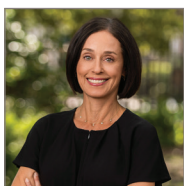
Mary Cutler
843.343.4858



Will Dammeyer
843.670.6747



Ann Daughtridge
843.709.7719



Jane Dowd
843.224.2788



LeGrand Elebash
843.810.6450



Harry Farthing
843.906.5586



Farrah Follmann
843.860.3425



Bill Frantz
330.329.0077



Martha Freshley
843.297.7530



Leize Gaillard
843.696.5934



Bonnie Geer
843.870.0521



Harrison Gilchrist
843.209.4658



Kaelin Hall
843.779.6116



Elle Haynes
843.557.6727



**Grace Perry
Huddleston**
843.224.6262



Jordan Kruse
843.343.8696



Amy Mathisen
843.906.7905



Trey Mathisen
843.906.7904



Michelle McQuillan
843.814.4201



Jane Milner
843.224.7339



Crissy Rowell
843.377.5177



Michael Rowell
843.906.5941



Kenton Selvey
843.806.7222



Eileen Smith
843.870.6290



Victoria Smith
843.855.1234



Kalyn Smythe
843.708.3353



Sarah Vineyard
843.709.1167



Courtney Vorachek
843.817.3148



Brian Walsh
843.754.2089



Kimberly Winner
843.818.7460



Paula Yorke
704.345.7474



William Means Real Estate is one of Charleston's most established real estate companies and has proudly offered unprecedented service to the Lowcountry since 1933.

Whether you are searching for a historic property, a beachfront cottage or a family home somewhere in between, allow us to help you find the perfect place in our favorite town.

Welcome to Charleston.

Downtown Charleston

25 Broad Street
Charleston, SC 29401

I'On Village

353 N. Shelmore Boulevard
Mount Pleasant, SC 29464

843.577.6651

charlestonrealestate.com



WILLIAM MEANS

25 Broad Street | Downtown Charleston

353 N. Shelmore Boulevard | Mount Pleasant

843.577.6651 | charlestonrealestate.com