

Special Features

- Spacious open floor plans with customizable layouts
- 9 foot ceilings
- First floor master bedroom option
- Coffered and tray ceiling options
- Stafford wood trim with custom built-in options
- Carlisle hardwood floors in living room and kitchen
- Crown molding in living room and kitchen
- Custom cabinet layouts with optional pantry
- Solid surface counters
- Stainless steel appliances
- Gas fireplace (stone chimney and wood burning options)
- Expansive master suites
- Master bath with double bowl vanity and oversized tile shower
- Extra-large closets and storage areas
- Smart phone technology compatible
- Recessed lighting
- Walkout basements available
- Large patios or porches with composite decking
- Optional metal roof on porch and cupola



Sustainable Choices/ Green Building

- Expansive open space subdivision layout with walking trails and preserved wooded and field reserves
- Selective tree clearing and grading
- Sustainable indigenous planting
- Marvin Integrity energy efficient windows
- Composite or pre-finished shingles, clapboard and board and batten siding
- High efficient Energy Star appliances
- High efficient Energy Star heating and cooling



Photos not representative of actual interiors. Please contact Lynne Morey for more details.

From The Developer

MEGRYCO, Inc. is excited to present Beech Tree Estates, in Chiltonville. Featuring Greek revival and Farmhouse style architecture, this quaint village offers 24 unique homes for the most discriminating buyer. The historic setting is surrounded by acres of preservation land near Bramhall Corner an adorned with gas-style street lamps, walkways and cobblestone community settings. The convenient location is just minutes from downtown Plymouth, white-sand beaches and area recreation as well as routes 3 and 44.

We look forward to working with you and your family to create the home of your dreams. Whether you are building for a growing family or downsizing into the retirement house you've strived for all your life, we're here to make those dreams a reality.

Our recent local residential projects include the groundbreaking redevelopment of the former National Guard Armory (**Residences @ the Armory**) and the breathtaking restoration of the historic Registry of Deeds (**The Registry**) both in the heart of downtown Plymouth.

Contact

Lynne A. Morey

508-789-6333

Lynne.Morey@NEMoves.com

BeechTreeEstates.com



34 Court Street
Plymouth, MA 02360
508-746-0051

©2016 Coldwell Banker Residential Brokerage. All Rights Reserved. Coldwell Banker Residential Brokerage fully supports the principles of the Fair Housing Act and the Equal Opportunity Act. Operated by a subsidiary of NRT LLC. Coldwell Banker and the Coldwell Banker logo are registered service marks owned by Coldwell Banker Real Estate LLC. 91603 12/16

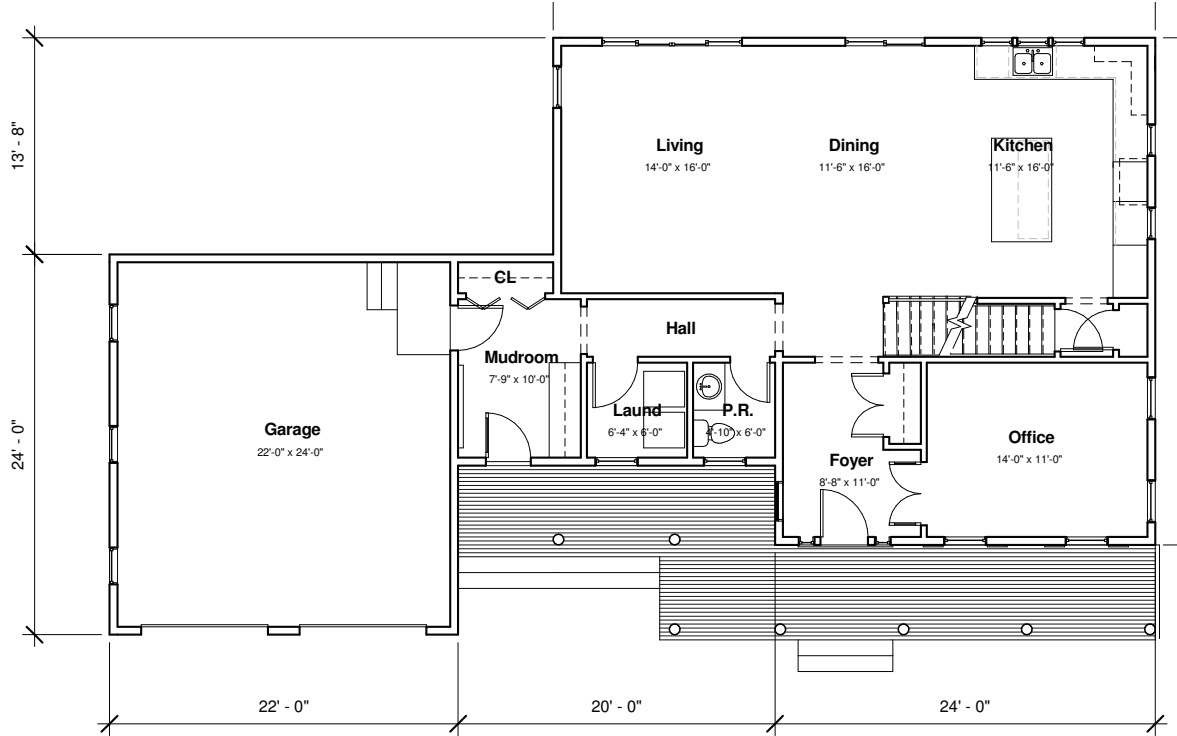


Brewster

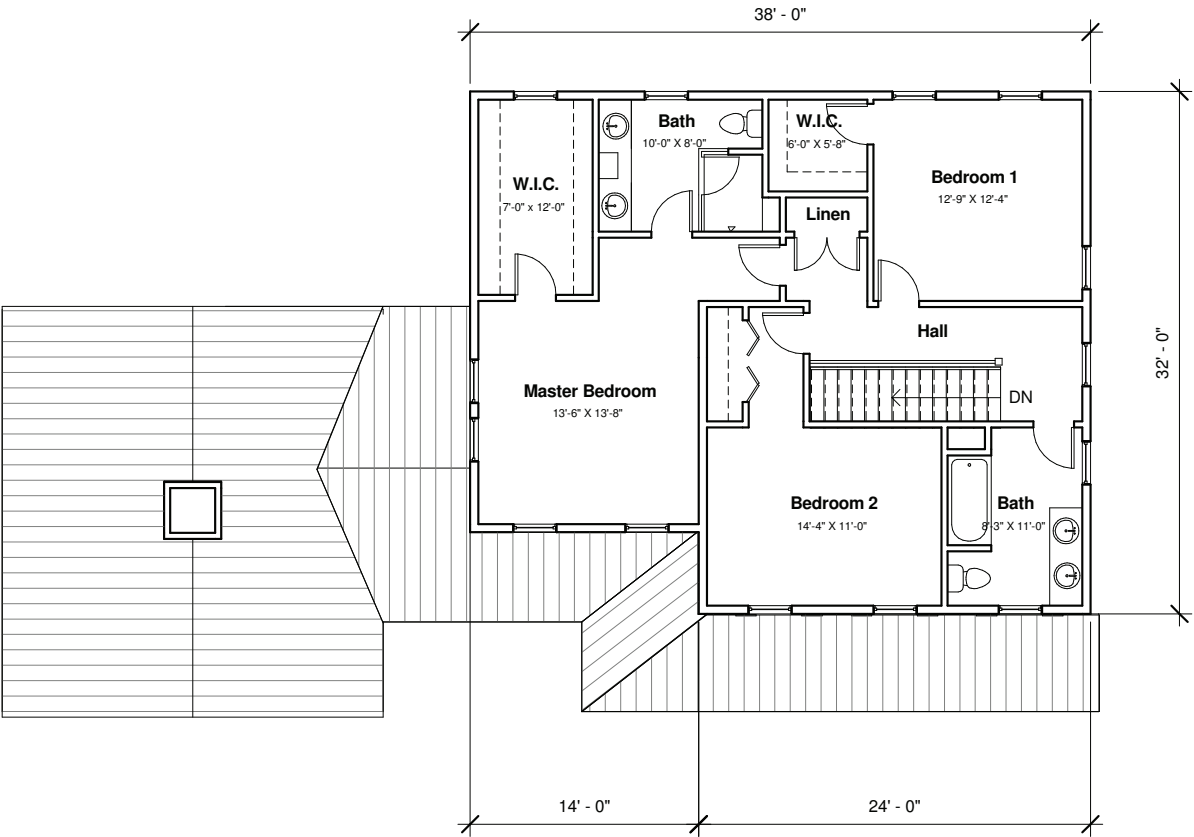


Brewster

2,335 square feet living space
2,860 square feet total space
3 bedrooms
2.5 bathrooms
2-car attached garage
Full basement



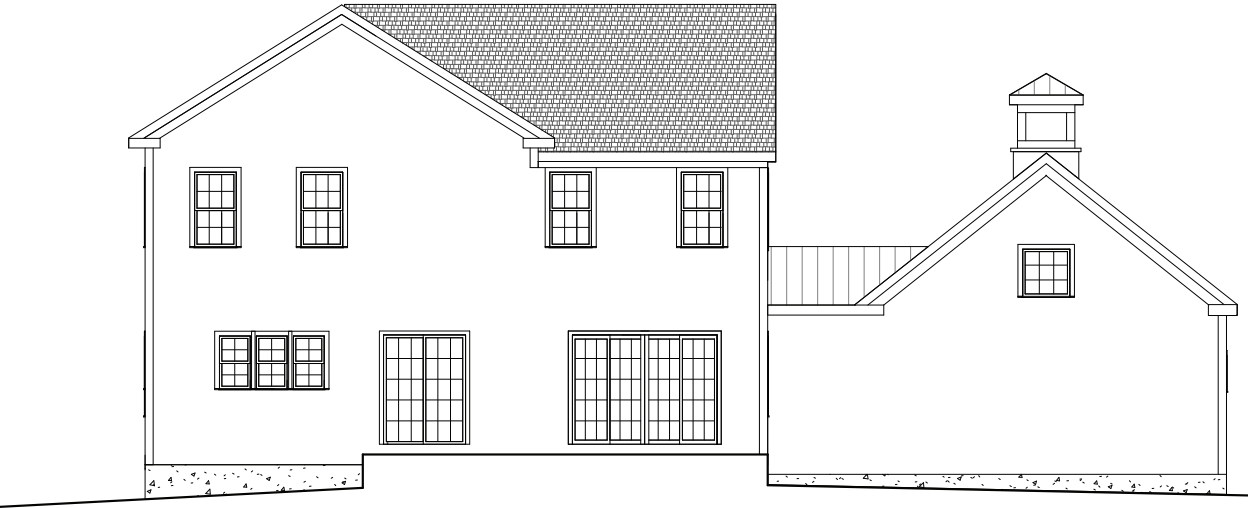
FIRST FLOOR



SECOND FLOOR



FRONT ELEVATION



REAR ELEVATION