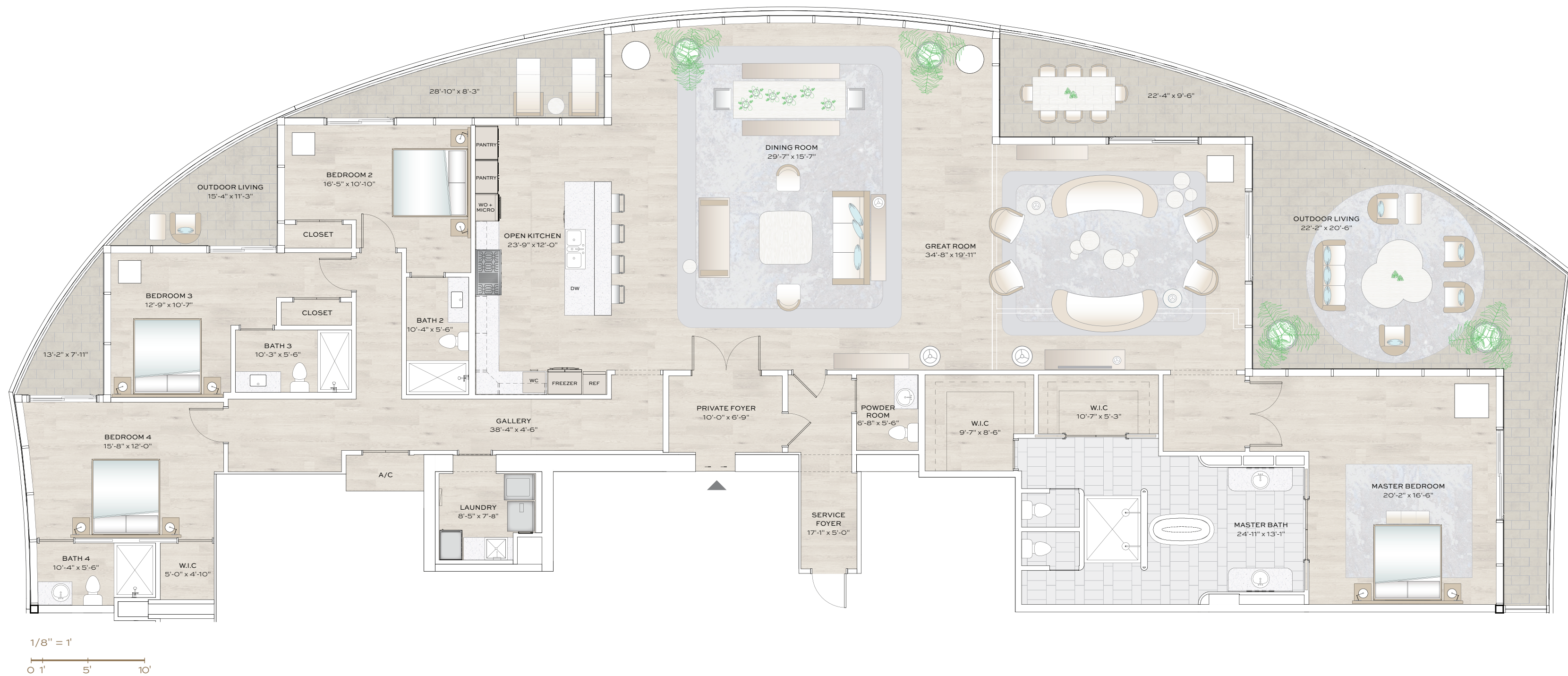
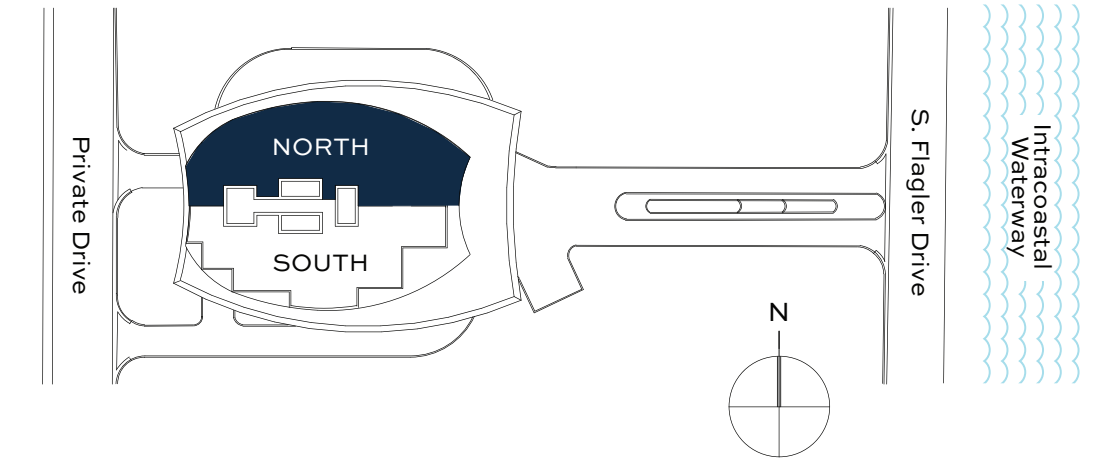


# NORTH RESIDENCE OPEN KITCHEN PLAN

# FORTÉ

4 BEDROOM / 4.5 BATH

Interior	4,420 sq. ft	411 sq. m
Exterior	1,022 sq. ft	95 sq. m
<b>Total Area*</b>	<b>5,442 sq. ft</b>	<b>506 sq. m</b>



## RESIDENCE FEATURES

- Only Two Flow-Through Residences Per Floor
- Over 1,000 SQ FT of Outdoor Living Space
- Sweeping Unobstructed City and Ocean Views
- Private Elevator Foyer
- 9'-10' Grand Ceiling Heights
- Jean-Louis Deniot and Italian Custom Design Kitchen and Bath Cabinetry
- Sub-Zero® and Wolf® Stainless Steel Contemporary Appliance Package
- Waterworks® Faucets and Fixtures in Master Bath
- His and Hers Vanities and Beauty Area in Master Bath
- His and Hers Spacious Walk-In Closets

\*Please see Sales Associate for exact square footage and dimensions for a specific residence.

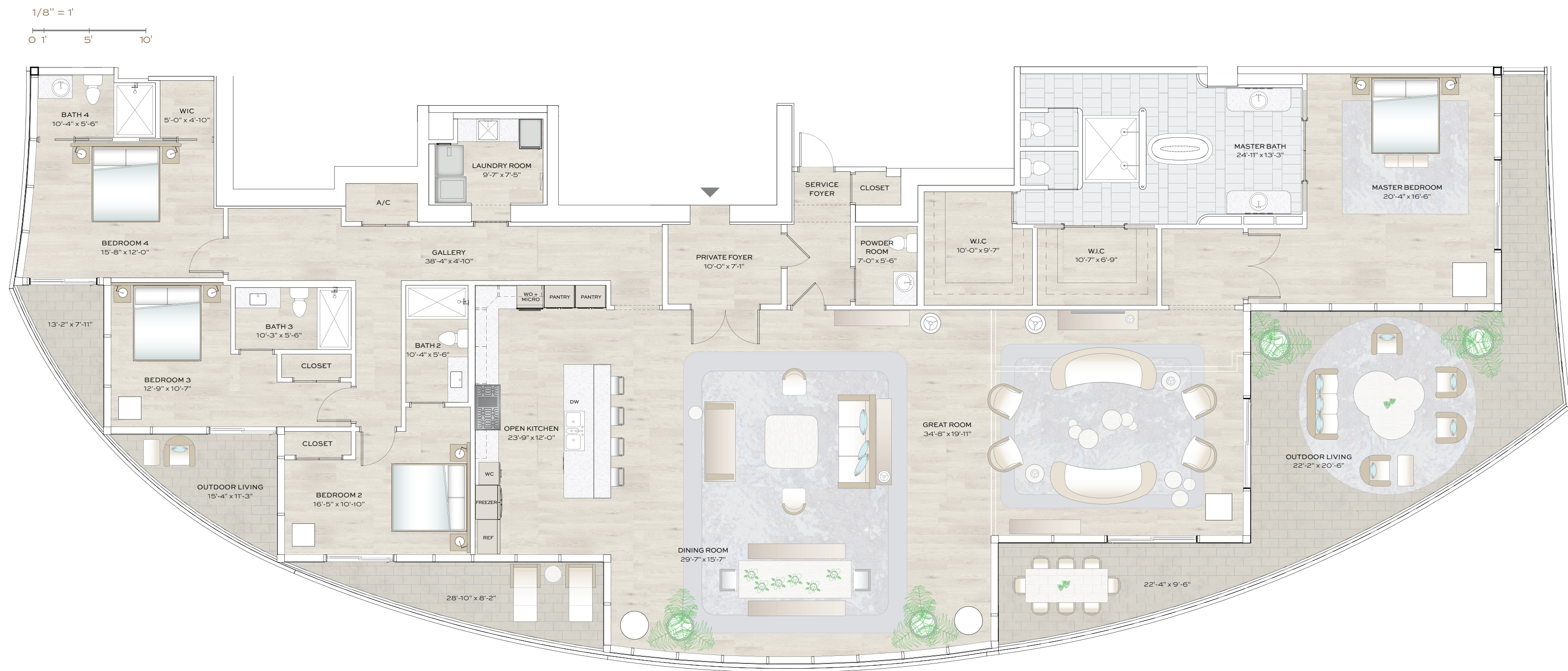
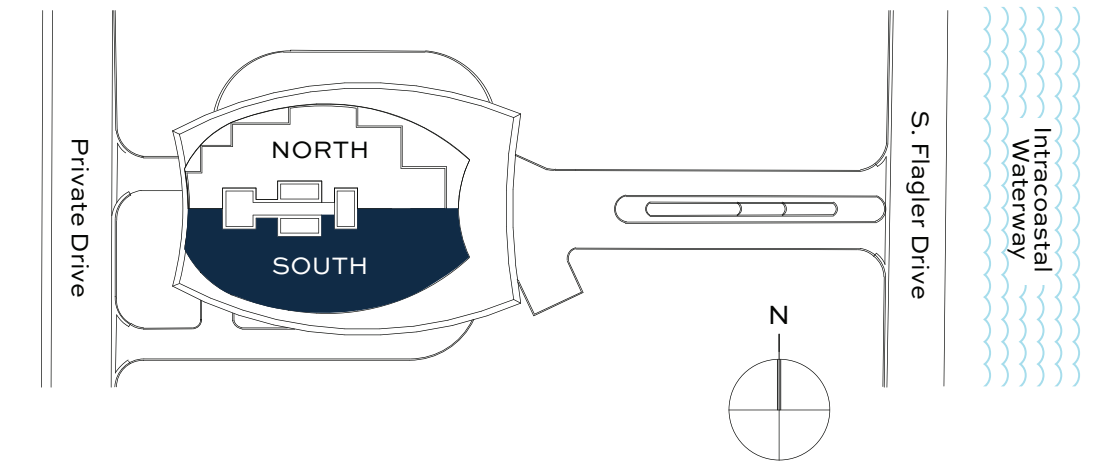
ORAL REPRESENTATIONS CANNOT BE RELIED UPON AS CORRECTLY STATING THE REPRESENTATIONS OF THE DEVELOPER. FOR CORRECT REPRESENTATIONS, MAKE REFERENCE TO THIS BROCHURE AND TO THE DOCUMENTS REQUIRED BY SECTION 718.503, FLORIDA STATUTES, TO BE FURNISHED BY A DEVELOPER TO A BUYER OR LESSEE. Stated square footages and dimensions are measured to the exterior boundaries of the exterior walls and the centerline of interior demising walls between Units and in fact vary from the dimensions that would be determined by using the description and definition of the "Unit" set forth in the Declaration, which generally only includes the interior airspace between the perimeter walls and excludes all interior structural components and other common elements. The method used herein is generally found in sales materials and is provided to allow a prospective buyer to compare the Units with units in other condominium projects that utilize the same method. For the dimensions of the Units based on the definition of "Unit" in the Declaration, refer to Exhibit "2" to the Declaration of Condominium included in the prospectus. Terraces and Private Elevators are not part of the Unit. Measurements of rooms set forth on this floor plan are generally taken at the farthest points of each given room (as described above and as if the room were a perfect rectangle), without regard for any cutouts or variations. Accordingly, the interior air space dimensions of the actual room will be smaller than the product obtained by multiplying the stated length and width. All square footages and dimensions are estimates based on preliminary plans and will vary with actual construction. Prices, availability, artist's renderings, dimensions, specifications, and features are subject to change at any time without notice.

# SOUTH RESIDENCE OPEN KITCHEN PLAN

# FORTÉ

4 BEDROOM / 4.5 BATH

Interior	4,436 sq. ft	412 sq. m
Exterior	1,022 sq. ft	95 sq. m
<b>Total Area*</b>	<b>5,458 sq. ft</b>	<b>507 sq. m</b>

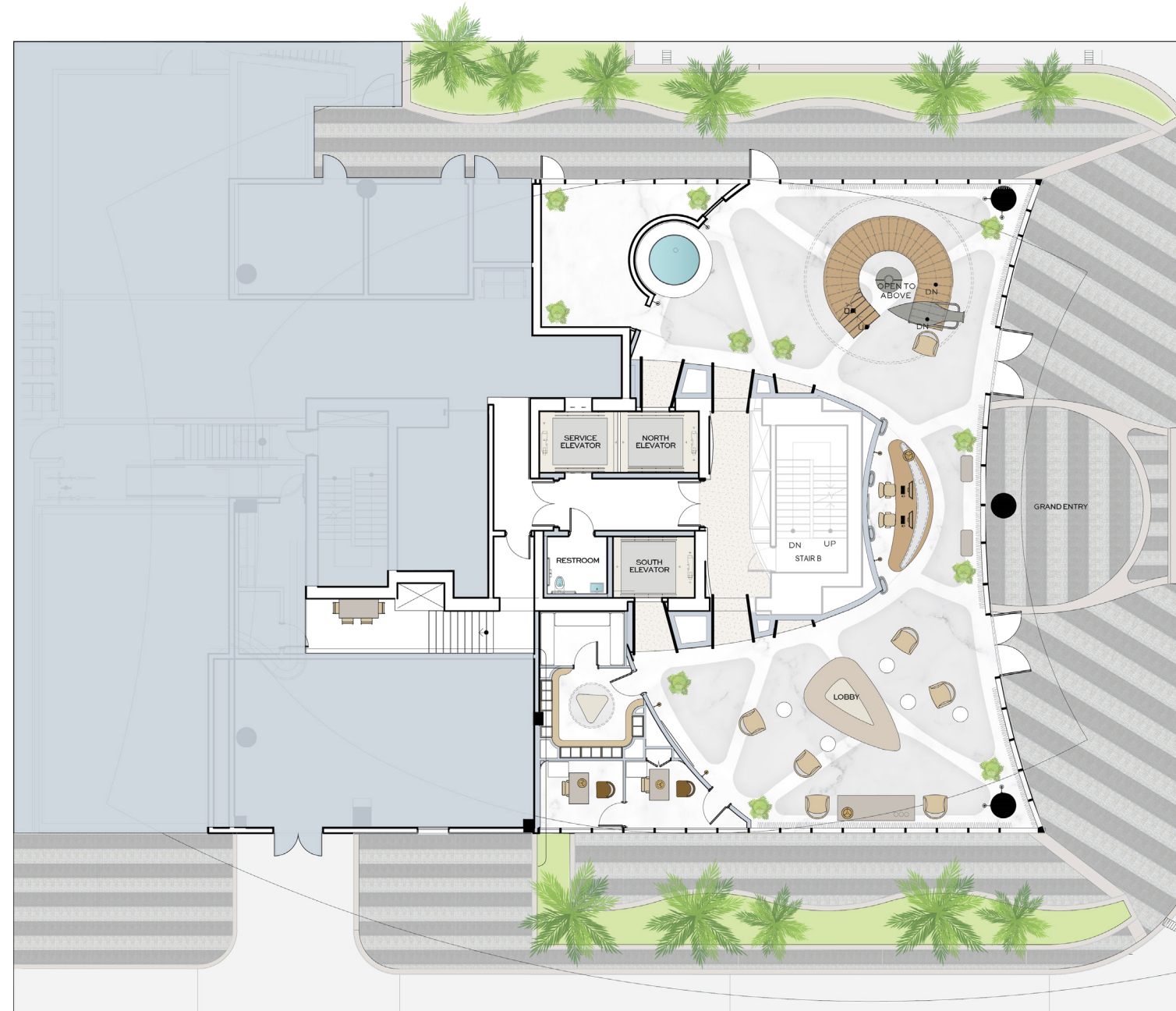


## RESIDENCE FEATURES

- Only Two Flow-Through Residences Per Floor
- Over 1,000 SQ FT of Outdoor Living Space
- Sweeping Unobstructed City and Ocean Views
- Private Elevator Foyer
- 9'-10' Grand Ceiling Heights
- Jean-Louis Deniot and Italian Custom Design Kitchen and Bath Cabinetry
- Sub-Zero® and Wolf® Stainless Steel Contemporary Appliance Package
- Waterworks® Faucets and Fixtures in Master Bath
- His and Hers Vanities and Beauty Area in Master Bath
- His and Hers Spacious Walk-In Closets

\*Please see Sales Associate for exact square footage and dimensions for a specific residence.

ORAL REPRESENTATIONS CANNOT BE RELIED UPON AS CORRECTLY STATING THE REPRESENTATIONS OF THE DEVELOPER. FOR CORRECT REPRESENTATIONS, MAKE REFERENCE TO THIS BROCHURE AND TO THE DOCUMENTS REQUIRED BY SECTION 718.503, FLORIDA STATUTES, TO BE FURNISHED BY A DEVELOPER TO A BUYER OR LESSEE. Stated square footages and dimensions are measured to the exterior boundaries of the exterior walls and the centerline of interior demising walls between Units and in fact vary from the dimensions that would be determined by using the description and definition of the "Unit" set forth in the Declaration, which generally only includes the interior airspace between the perimeter walls and excludes all interior structural components and other common elements. The method used herein is generally found in sales materials and is provided to allow a prospective buyer to compare the Units with units in other condominium projects that utilize the same method. For the dimensions of the Units based on the definition of "Unit" in the Declaration, refer to Exhibit "2" to the Declaration of Condominium included in the prospectus. Terraces and Private Elevators are not part of the Unit. Measurements of rooms set forth on this floor plan are generally taken at the farthest points of each given room (as described above and as if the room were a perfect rectangle), without regard for any cutouts or variations. Accordingly, the interior air space dimensions of the actual room will be smaller than the product obtained by multiplying the stated length and width. All square footages and dimensions are estimates based on preliminary plans and will vary with actual construction. Prices, availability, artist's renderings, dimensions, specifications, and features are subject to change at any time without notice.



## GRAND LOBBY LEVEL

- Grand Lobby and Lounge
- Concierge Service
- Package Service and Mail Room
- Access to Sculpture Garden, Art Walk and Dog Park

## RESIDENT SERVICES

- 24-Hour Security and Surveillance
- 24-Hour Lobby Attendant and Valet Service
- Forté House Cars
- Charging Stations for Electric Cars

## CONCIERGE SERVICES (additional fees may apply)

- Access to Premium Tickets and VIP Events, Restaurant Reservations
- Moving Coordination and Storage Solutions
- Interior Design Services
- Housekeeping Services
- Personal Shopper
- Travel Service Available
- Private and Commercial Air Bookings
- In-Residence Wellness and Fitness Coordination
- Spa and Salon Appointments