

Georgian - A



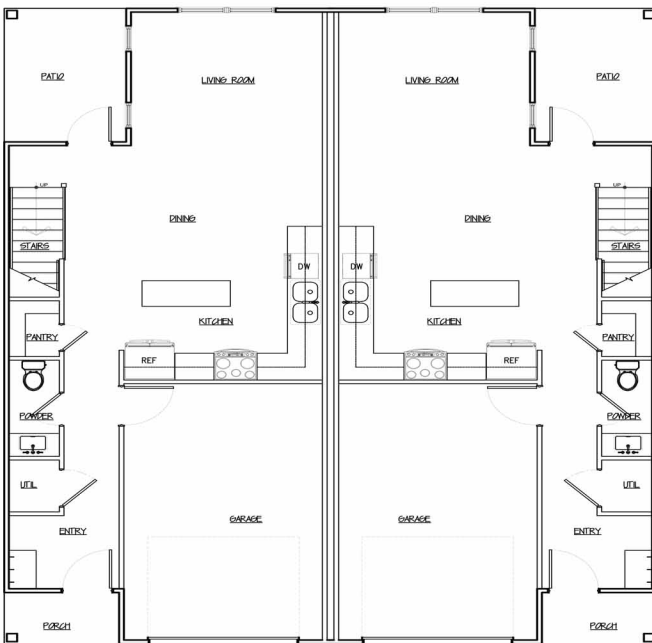
Virginia - A



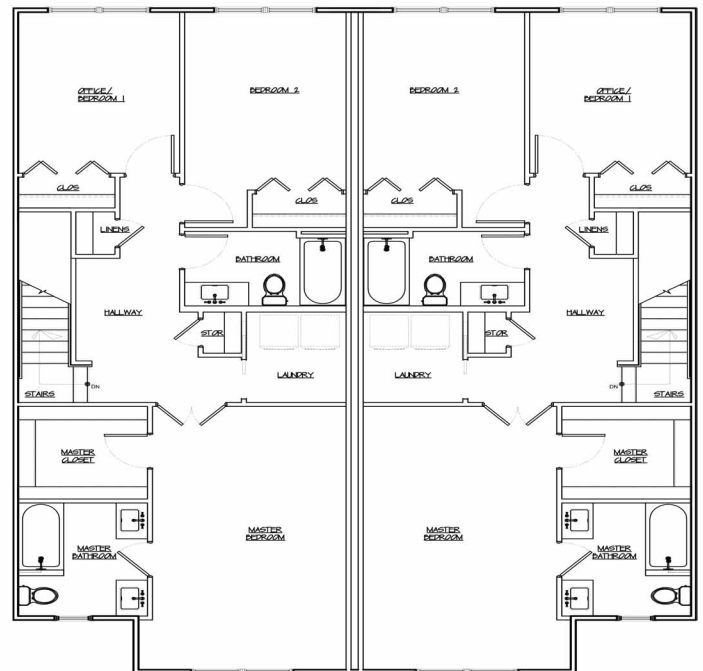
Carolina - A



Main Floor



Second Floor



Community information, including pricing, brands, standard features and availability are subject to change at any time prior to contracting without notice or obligation. Photographs, pictures, floor plans, elevations, features, colors and sizes are approximate for illustrative purposes only and will vary from the homes as built. All information is believed to be accurate, but is not warranted and is subject to withdrawal/modification without notice.

Georgian - B



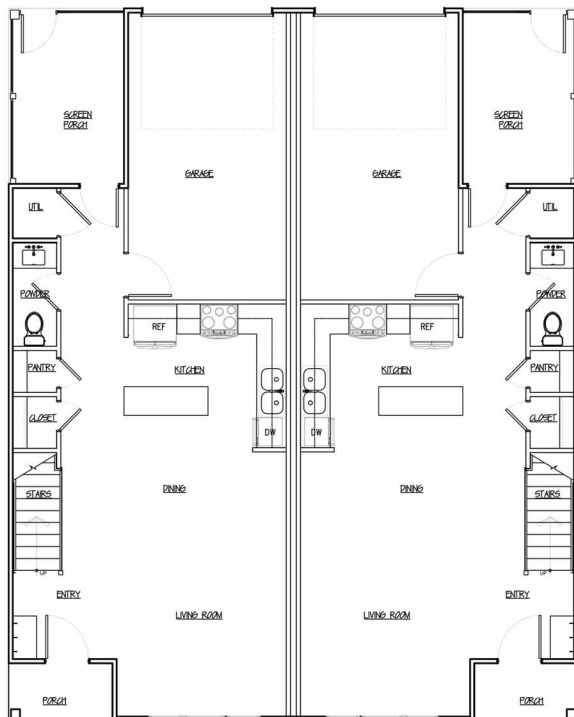
Virginia - B



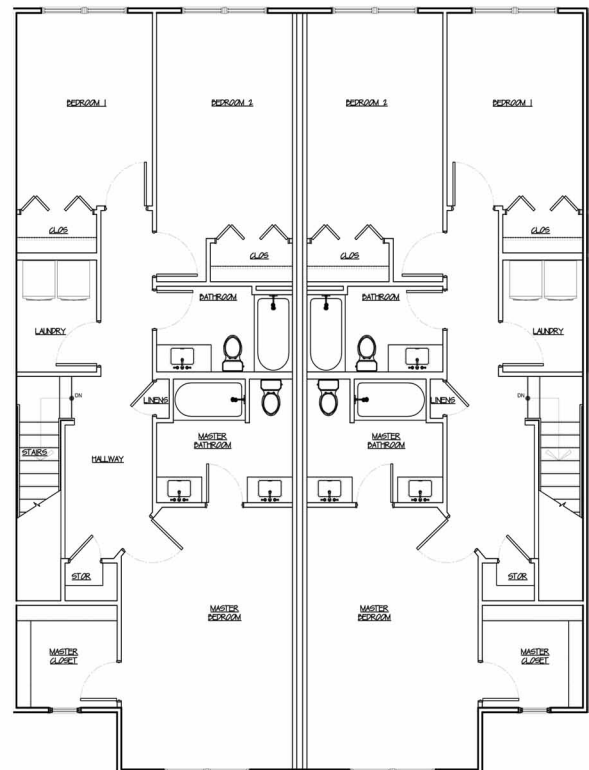
Carolina - B



Main Floor



Second Floor



Community information, including pricing, brands, standard features and availability are subject to change at any time prior to contracting without notice or obligation. Photographs, pictures, floor plans, elevations, features, colors and sizes are approximate for illustrative purposes only and will vary from the homes as built. All information is believed to be accurate, but is not warranted and is subject to withdrawal/modification without notice.

COMMUNITY LAYOUT



FROM I-75

From I-75 North : Take Exit 241. Make a left off exit. In less than a mile, make a right on Browns Mill Rd. Browns Mills Village will be on your left

From I-75 South : Take Exit 241. Make a right off exit. In less than a mile, make a right on Browns Mill Rd. Browns Mills Village will be on your left

Community information, including pricing, brands, standard features and availability are subject to change at any time prior to contracting without notice or obligation. Photographs, pictures, floor plans, elevations, features, colors and sizes are approximate for illustrative purposes only and will vary from the homes as built. All information is believed to be accurate, but is not warranted and is subject to withdrawal/modification without notice.