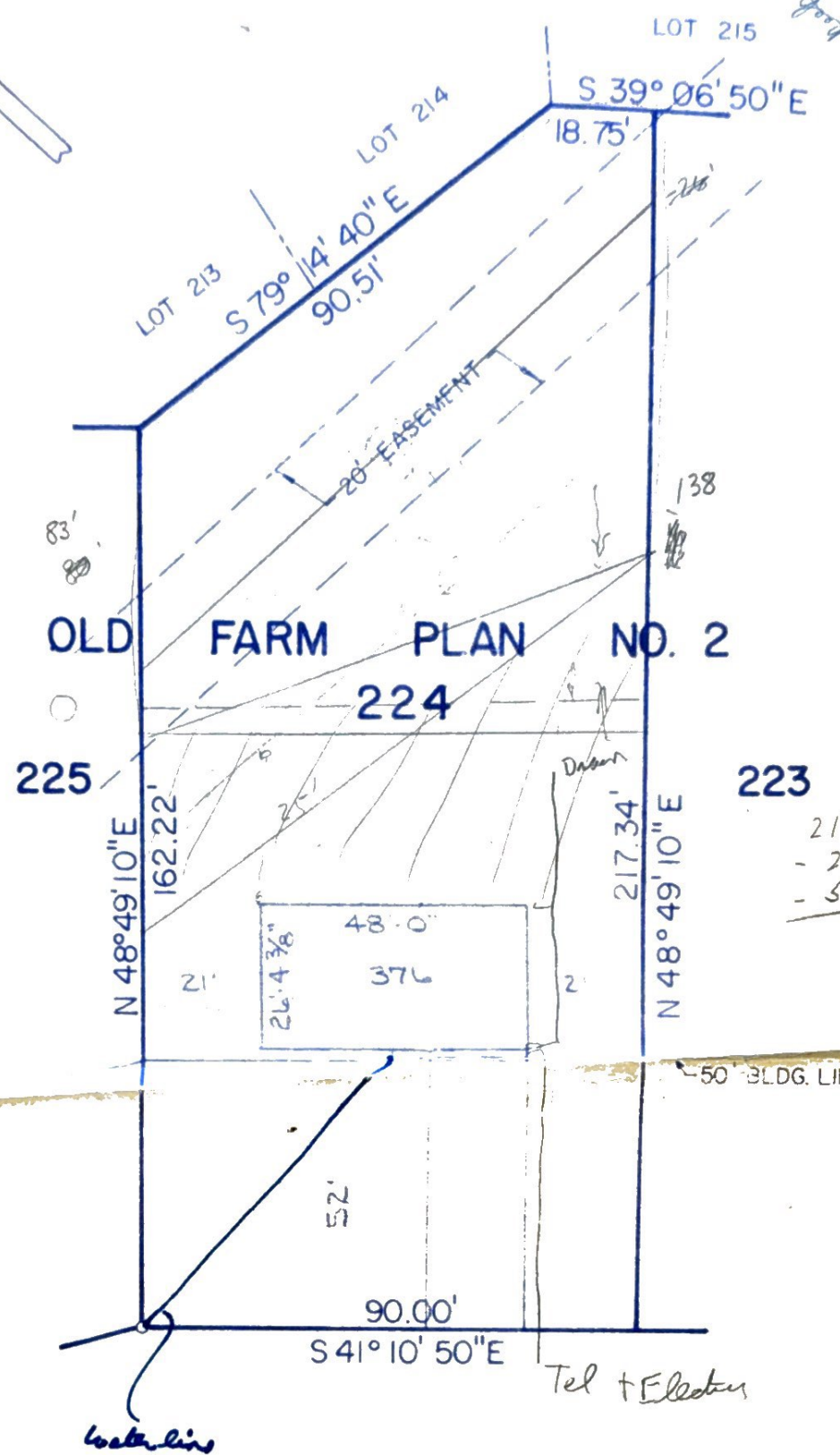


*Keep Hubble pits on the east
 2:1 slope (26')
 - Mason Votz
 - 1/2" = 20'*



52
 27

 79

162.2
 79.

 83.2 ft

217.3
 - 27

 190.3

52
 30

 82

*See other side
 for H₂O curb
 vof*

11-24

PLAN OF PROPERTY

FOR RYAN HOMES INC.		SITUATE IN UPPER ST. CLAIR TOWNSHIP ALLEGHENY CO., PA.	
ELLIOTT SURVEYING, INC. Surveyors and Engineers 80 CENTER CHURCH ROAD 641 7808 McMURRAY, PA. 15317 343 8090		SCALE: 1" = 30'	PBV 85 PG. 151-152
		DATE: NOVEMBER 1976	1477