

NOTES

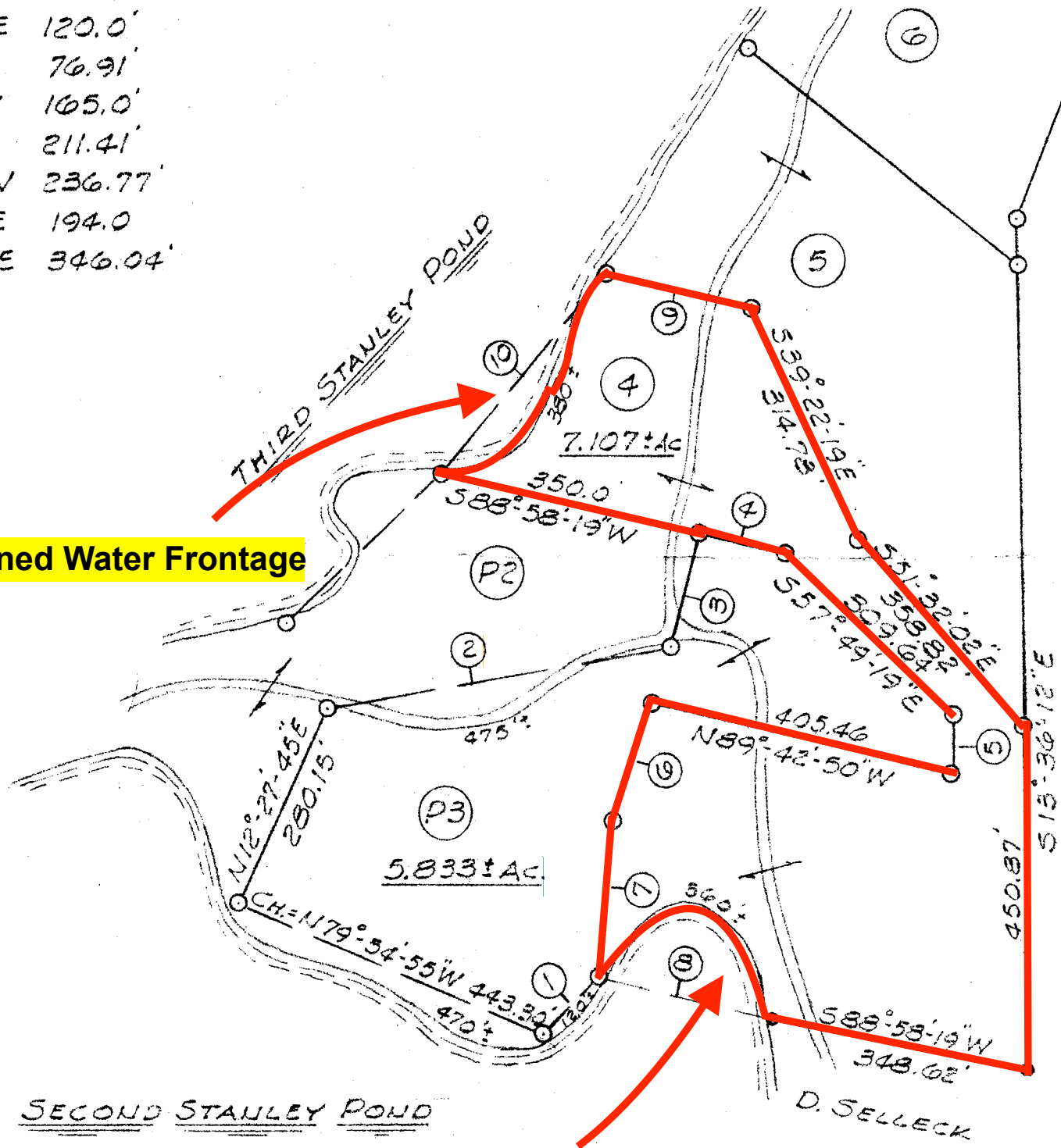
- ① - S 32°-28'-14" W 100.0'
- ② - CH. = N 67°-01'-50" E 466.45'
- ③ - N 0°-46'-22" E 160.86'
- ④ - N 88°-58'-19" E 120.0'
- ⑤ - S 13°-36'-12" E 76.91'
- ⑥ - S 5°-43'-37" W 105.0'
- ⑦ - S 6°-33'-45" E 211.41'
- ⑧ - S 88°-58'-19" W 236.77'
- ⑨ - N 88°-58'-19" E 194.0'
- ⑩ - N 26°-58'-33" E 346.04'

LEGEND

- IRON PIN
- IRON PIPE

380' +/- Owned Water Frontage

560' +/- Owned Water Frontage



ANTHONY T. RAZZA



APPROVED BY THE TOWN OF HIRAM, MAINE
PLANNING BOARD.
DATE: 11-19-85

Conrad By Herself
David P. Dow
Charles F. Clark, Jr.

OXFORD, ME.

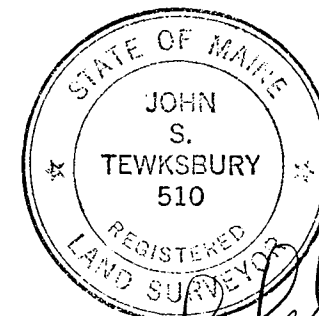
West. Dist. Registry of Deeds

Received Nov. 20 19 85

at 1 h 17 m P. M. and

Recorded in Vol. 8 Page 9

Jean Watson
Clerk



John S. Tewksbury

PLAN OF A PORTION
OF LAUDS OF
MAJOR & ANN C. FRIEDMAN
LOTS P3 & 4 REVISED

TOWN OF HIRAM, OXFORD COUNTY, MAINE
SCALE: 1" = 200' BY: JST. DATE: NOV. '85