

# RESIDENCE 02

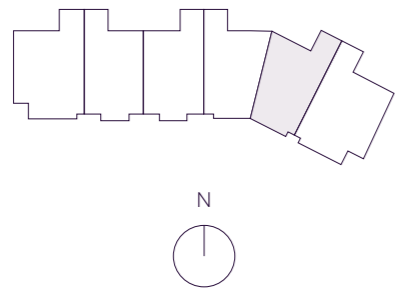
INTERIOR	EXTERIOR
3,976 F <sup>2</sup>	763 F <sup>2</sup>
370 M <sup>2</sup>	71 M <sup>2</sup>

TOTAL  
4,739 F<sup>2</sup>  
441 M<sup>2</sup>

\*

- 3 BEDROOMS
- 4 BATHROOMS
- POWDER ROOM
- FAMILY ROOM
- SERVICE SUITE
- LIVING ROOM

OCEAN VIEW



**THE RESIDENCES**

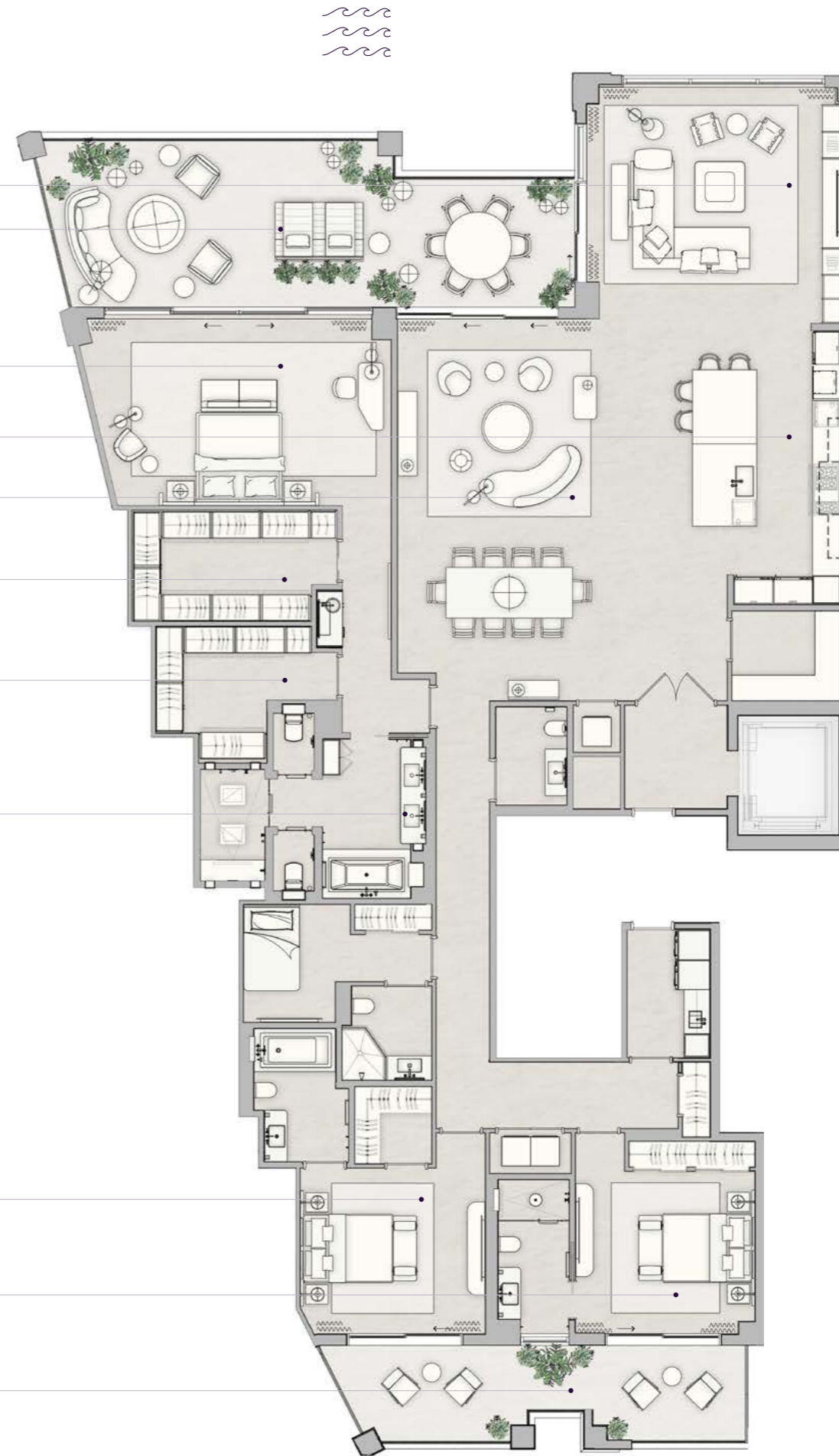
SIX FISHER ISLAND

⑥

**DouglasElliman**  
Development Marketing

The dimensions stated for this floor plan are approximate because there are various recognized methods for calculating the square footage of a unit. The square footage stated here is calculated from the exterior boundaries of the exterior walls to the centerline of interior demising walls without deductions for cutouts, curves, or architectural features. This method typically results in quoted dimensions greater than the dimensions that would be determined by using other accepted methods. The definition of "Unit" and the calculation method to be relied upon is set forth by the Developer in Developer's prospectus which method may result in a square footage calculation less than the result of the calculation method used here. Dimension and unit configuration is not guaranteed and may change during construction. Depictions of furnishings, fixtures and other items of personal property are not included with purchase. Consult the Developer's prospectus to understand Unit dimensions, to learn what is included with purchase and by payment of regular condominium assessments, and to learn all terms and conditions. 2023 © PRH Parcel 7 Owner, LLC, with all rights reserved.

- FAMILY ROOM  
18'-8" x 20'
- BALCONY  
16'-6" x 43'-3"
- PRIMARY BEDROOM  
14'-1" x 23'-6"
- KITCHEN  
21'-6" x 11'-6"
- LIVING ROOM  
30'-7" x 14'-6"
- HER WARDROBE  
9' x 13'-8"
- HIS WARDROBE  
9'-11" x 13'-4"
- PRIMARY BATHROOM  
15'-4" x 17'-3"
- BEDROOM 2  
13' x 14'-8"
- BEDROOM 3  
13'-6" x 14'-5"
- BALCONY  
33'-3" x 8'-1"



N 25° 45.8255



W 80° 8.4428