

VICEROY BRICKELL
THE RESIDENCES

LOCKOUT UNIT FLOOR PLANS

Residences 03 & 04

0304 | NORTH EXPOSURE
LEVELS 15 TO 42

VICEROY BRICKELL THE RESIDENCES



RESIDENCE
04

RESIDENCE
03

STUDIO | 1 BATHROOM

2 BEDROOM | 2 BATHROOM

INTERIOR 519 SF | 48.22 M²

INTERIOR 1,235 SF | 114.74 M²

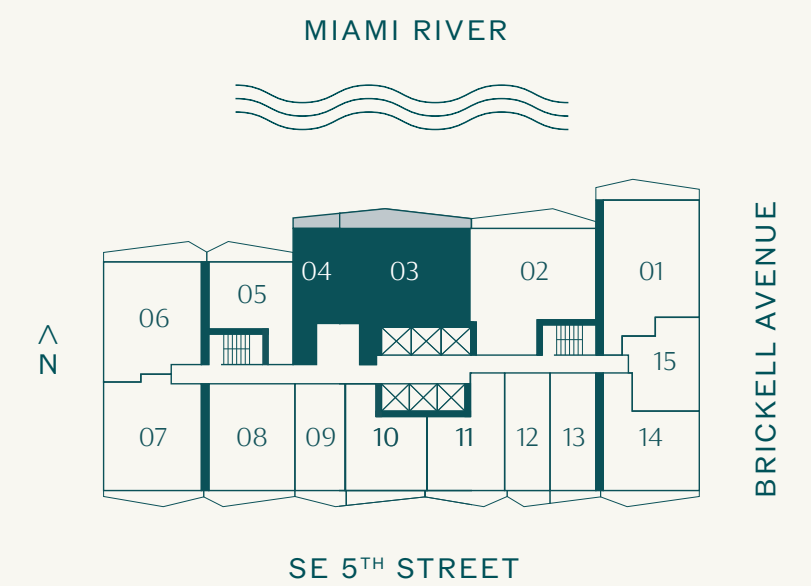
TERRACE 57 SF | 5.30 M²

TERRACE 187 SF | 17.37 M²

TOTAL 576 SF | 53.52 M²

TOTAL 1,422 SF | 132.11 M²

TOTAL SQUARE FOOTAGE 1,998 SF | 185.63 M²



T 305 676 2040 VICEROYBRICKELLRESIDENCES.COM

ⓘ The dimensions stated for this floor plan are approximate because there are various recognized methods for calculating the square footage of a unit. The square footage stated here is calculated from the exterior boundaries of the exterior walls to the centerline of interior demising walls without deductions for cutouts, curves, or architectural features. This method typically results in quoted dimensions greater than the dimensions that would be determined by using other accepted methods. The definition of "Unit" and the calculation method to be relied upon is set forth by 444 BRICKELL TWO, LLC (the "Developer") in Developer's prospectus which method may result in a square footage calculation less than the result of the calculation method used here. VICEROY BRANDS, LLC owns the mark and name Viceroy®. The Developer is permitted to use the name and logo of The Related Group® and Viceroy® pursuant to license agreements which are valid unless terminated or expired; neither The Related Group nor Viceroy Brands, LLC are the Developer. Consult the Developer's prospectus to learn what is included with Unit purchase and to understand Unit dimensions. 2025 © 444 BRICKELL TWO, LLC with all rights reserved.

Residences 09 & 10

0910 | SOUTH EXPOSURE
LEVELS 2 TO 42

VICEROY BRICKELL THE RESIDENCES

RESIDENCE
09

RESIDENCE
10

STUDIO | 1 BATHROOM

1 BEDROOM | 1 BATHROOM

INTERIOR 485 SF | 45.06 M²

INTERIOR 686 SF | 63.73 M²

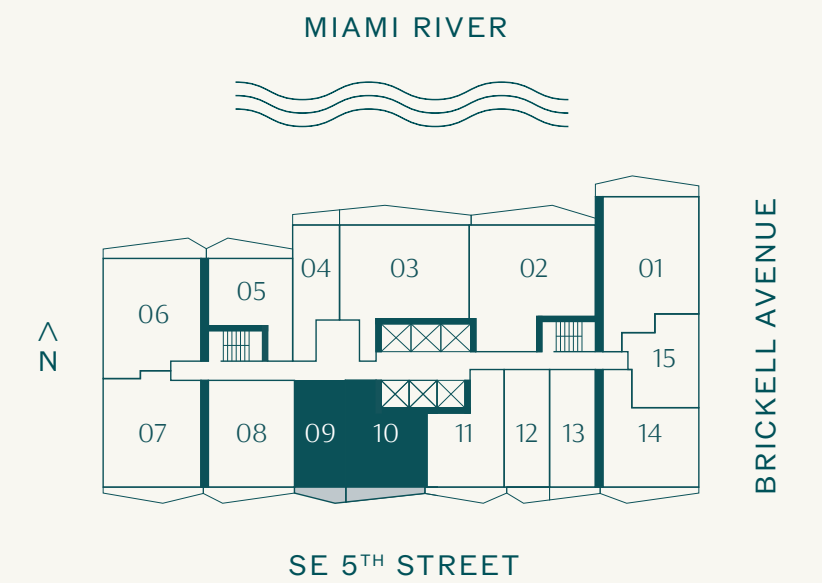
TERRACE 57 SF | 5.30 M²

TERRACE 78 SF | 7.25 M²

TOTAL 542 SF | 50.36 M²

TOTAL 764 SF | 70.98 M²

TOTAL SQUARE FOOTAGE 1,306 SF | 121.34 M²



T 305 676 2040 VICEROYBRICKELLRESIDENCES.COM

ⓘ The dimensions stated for this floor plan are approximate because there are various recognized methods for calculating the square footage of a unit. The square footage stated here is calculated from the exterior boundaries of the exterior walls to the centerline of interior demising walls without deductions for cutouts, curves, or architectural features. This method typically results in quoted dimensions greater than the dimensions that would be determined by using other accepted methods. The definition of "Unit" and the calculation method to be relied upon is set forth by 444 BRICKELL TWO, LLC (the "Developer") in Developer's prospectus which method may result in a square footage calculation less than the result of the calculation method used here. VICEROY BRANDS, LLC owns the mark and name Viceroy®. The Developer is permitted to use the name and logo of The Related Group® and Viceroy® pursuant to license agreements which are valid unless terminated or expired; neither The Related Group nor Viceroy Brands, LLC are the Developer. Consult the Developer's prospectus to learn what is included with Unit purchase and to understand Unit dimensions. 2025 © 444 BRICKELL TWO, LLC with all rights reserved.

Residences 11 & 12

1112 | SOUTH EXPOSURE
LEVELS 2 TO 42

VICEROY BRICKELL THE RESIDENCES

RESIDENCE
11

1 BEDROOM | 1 BATHROOM

INTERIOR 699 SF | 64.94 M²

TERRACE 85 SF | 7.90 M²

TOTAL 784 SF | 72.84 M²

RESIDENCE
12

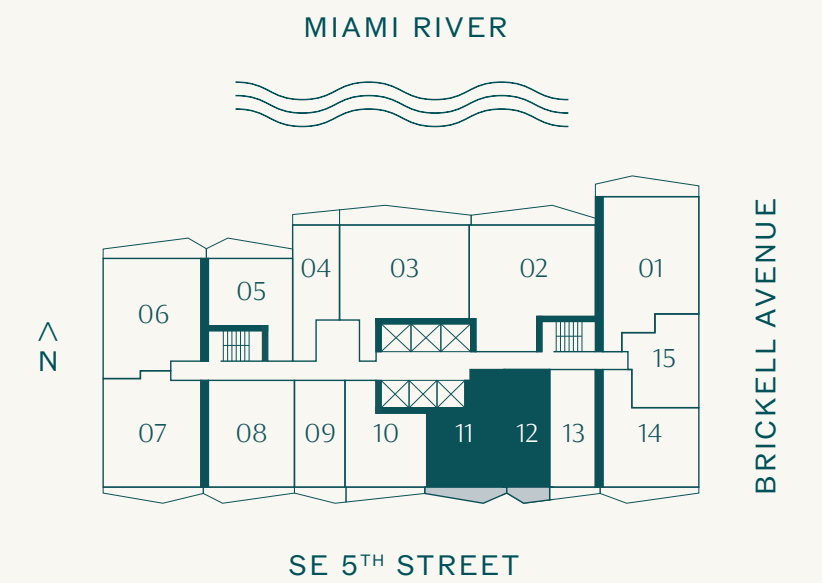
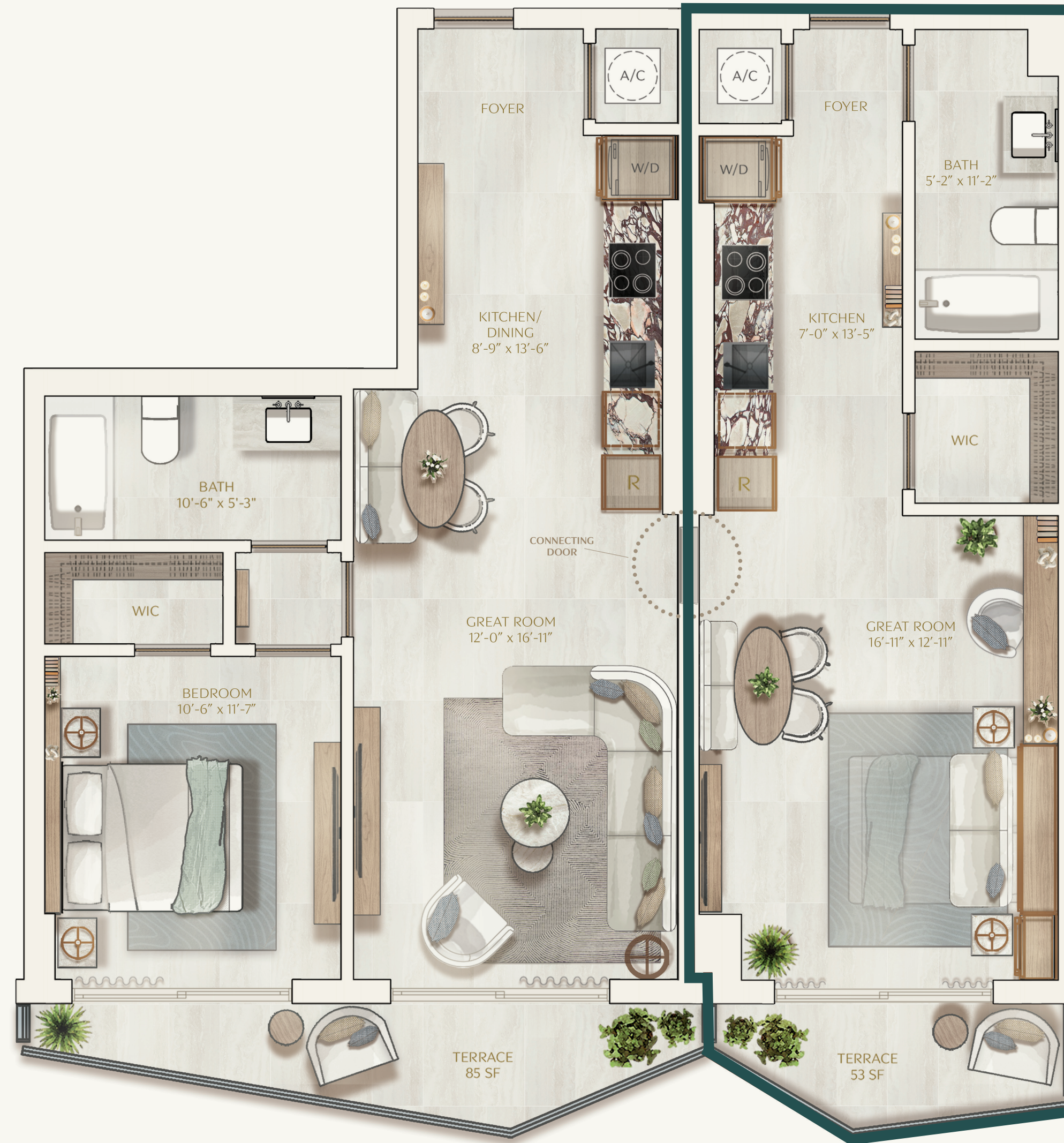
STUDIO | 1 BATHROOM

INTERIOR 489 SF | 45.43 M²

TERRACE 53 SF | 4.92 M²

TOTAL 542 SF | 50.35 M²

TOTAL SQUARE FOOTAGE 1,326 SF | 123.19 M²



T 305 676 2040 VICEROYBRICKELLRESIDENCES.COM

ⓘ The dimensions stated for this floor plan are approximate because there are various recognized methods for calculating the square footage of a unit. The square footage stated here is calculated from the exterior boundaries of the exterior walls to the centerline of interior demising walls without deductions for cutouts, curves, or architectural features. This method typically results in quoted dimensions greater than the dimensions that would be determined by using other accepted methods. The definition of "Unit" and the calculation method to be relied upon is set forth by 444 BRICKELL TWO, LLC (the "Developer") in Developer's prospectus which method may result in a square footage calculation less than the result of the calculation method used here. VICEROY BRANDS, LLC owns the mark and name Viceroy®. The Developer is permitted to use the name and logo of The Related Group® and Viceroy® pursuant to license agreements which are valid unless terminated or expired; neither The Related Group nor Viceroy Brands, LLC are the Developer. Consult the Developer's prospectus to learn what is included with Unit purchase and to understand Unit dimensions. 2025 © 444 BRICKELL TWO, LLC with all rights reserved.

SALES LOUNGE

444 Brickell Avenue Suite One,
Lobby Level, Miami, FL 33131

T 305.908.1111

VICEROYBRICKELLRESIDENCES.COM



VICEROY

® ORAL REPRESENTATIONS CANNOT BE RELIED UPON AS CORRECTLY STATING REPRESENTATIONS OF THE DEVELOPER. FOR CORRECT REPRESENTATIONS, MAKE REFERENCE TO THIS BROCHURE AND THE DOCUMENTS REQUIRED BY SECTION 718.503, FLORIDA STATUTES, TO BE FURNISHED BY A DEVELOPER TO A BUYER OR LESSEE. This condominium, marketed as Viceroy Brickell The Residences (the "Condominium"), is developed by 444 BRICKELL TWO, LLC ("Developer") and this offering is made only by the Developer's Prospectus for the Condominium. No statement should be relied upon if not made in the Developer's Prospectus. VICEROY BRANDS, LLC owns the mark and name Viceroy®. Developer, pursuant to license agreements, has a right to use the trade names, marks, and logos of The Related Group and VICEROY BRANDS, LLC. The use of the names and marks of Viceroy® shall only continue for so long as the license agreement with VICEROY BRANDS, LLC is in effect. This is not intended to be an offer to sell, or solicitation of an offer to buy, condominium units in any other jurisdiction if prohibited by law unless the condominium is registered if required or exempt. Developer is not a resident of New York. Consult the Developer's Prospectus for the proposed budget, all terms, conditions, specifications, Unit dimensions and to learn what is included with your Unit purchase and payment of regular assessments. Reproduction for private or commercial use is not authorized. 2025 © by 444 BRICKELL TWO, LLC with all rights reserved.