

*Riva*

---

RESIDENZE

FORT LAUDERDALE

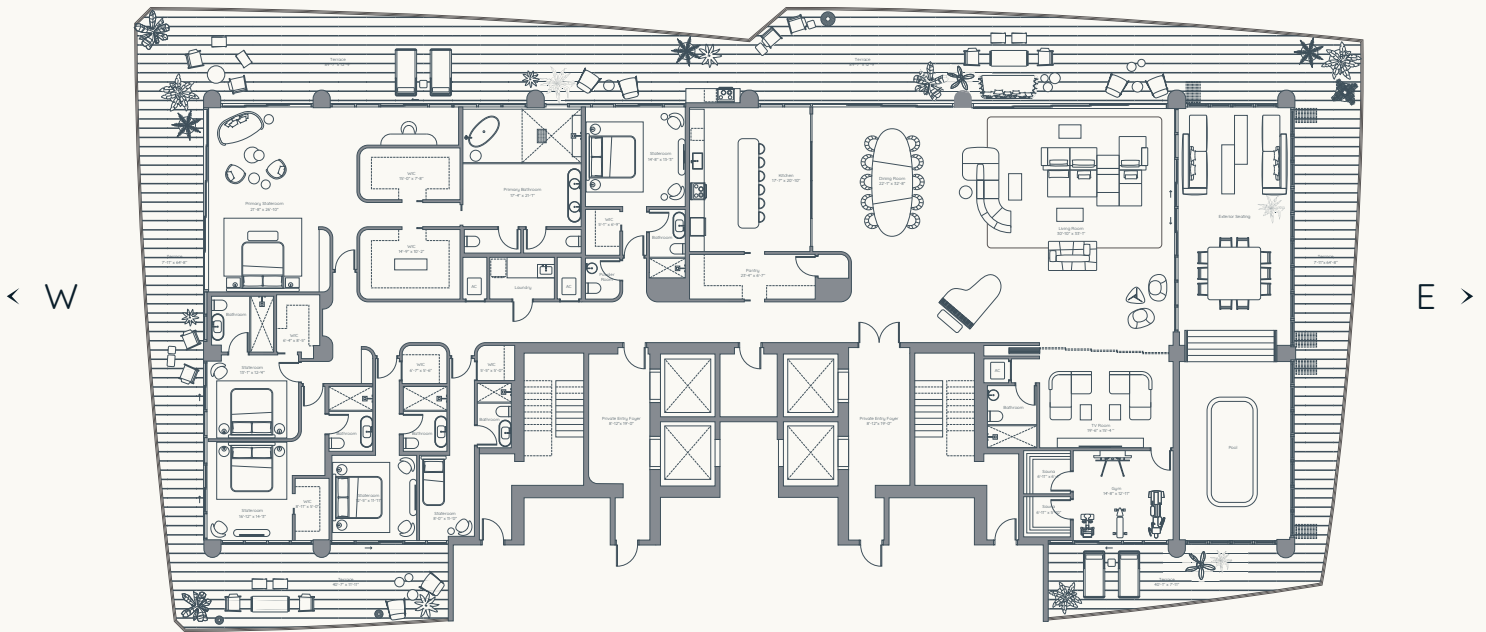
FLOORPLANS

PENTHOUSE

# Riva

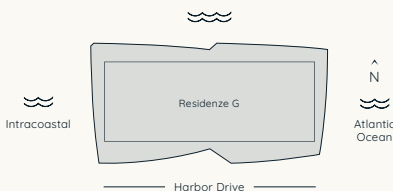
## RESIDENZE

FORT LAUDERDALE



## RESIDENCE G

UPPER PENTHOUSE | LEVEL 20



6 BEDROOMS

7.5 BATHROOMS

INTERIOR

8,878 SQ. FT.

TERRACES

4,239 SQ. FT.

ORAL REPRESENTATIONS CANNOT BE RELIED UPON AS CORRECTLY STATING THE REPRESENTATIONS OF THE DEVELOPER. FOR CORRECT REPRESENTATIONS, MAKE REFERENCE TO THIS BROCHURE AND TO THE DOCUMENTS REQUIRED BY SECTION 718.503, FLORIDA STATUTES, TO BE FURNISHED BY A DEVELOPER TO A BUYER OR LESSEE. The square footage stated herein is approximate. Stated dimensions and square footages are measured to the exterior boundaries of the exterior walls and the centerline of interior demising walls and in fact vary from the dimensions that would be determined by using the description and definition of the "Unit" set forth in the Declaration (which generally only includes the interior airspace between the perimeter walls and excludes interior structural components). Note that measurements of rooms set forth on this floor plan are generally taken at the greatest points of each given room (as if the room were a perfect rectangle), without regard for any cutouts. Accordingly, the area of the actual room will typically be smaller than the product obtained by multiplying the stated length times width. All dimensions are approximate and may vary with actual construction, and all floor plans and development plans are subject to change. The size and configuration of balconies and terraces and windows varies throughout the building. For the actual size and configuration of the balcony and windows for your unit consult your prospectus. All depictions of furnishings, appliances, built-ins, counters, and other matters of detail, including, without limitation, items of finish and decoration, are conceptual only and are not necessarily included in each Unit. The furniture layout and the use of space illustrated are suggested uses only and not intended to guarantee any specific use of space or accommodation of specific furnishings. The furnishings, design features, fixture and decor illustrated are conceptual only and may not be included with a unit purchase. Consult your prospectus and Purchase Agreement to learn what is included with a unit purchase and to review the unit square footage calculation method to be relied upon, which is set forth in the prospectus. The name of the Condominium is Ocean Harbor Condominium. The Condominium is developed by Ocean Harbor Properties, LLC, a Florida limited liability company ("Developer"), which has the right to use the name Riva Residence under a license from Ferretti S.p.A. (the "Brand Owner"). The Brand Owner is not the Developer and there is no guarantee that the Condominium will always be known as Riva Residence and no party may rely on any such guarantee. This Condominium is being offered by Ocean Harbor Properties, LLC (the "Developer"). This is not intended to be an offer to sell or solicitation to buy, condominium units to residents of any jurisdiction where prohibited by law, and your eligibility for purchase will depend upon your state of residency. The offering is made only by the prospectus for the condominium and no statement should be relied upon if not made in the prospectus.

Property Address  
3013 | 3019 Harbor Drive  
Fort Lauderdale, FL 33316

Development  
WellDuō  
Vertical Developments  
GCF Development