

A-1

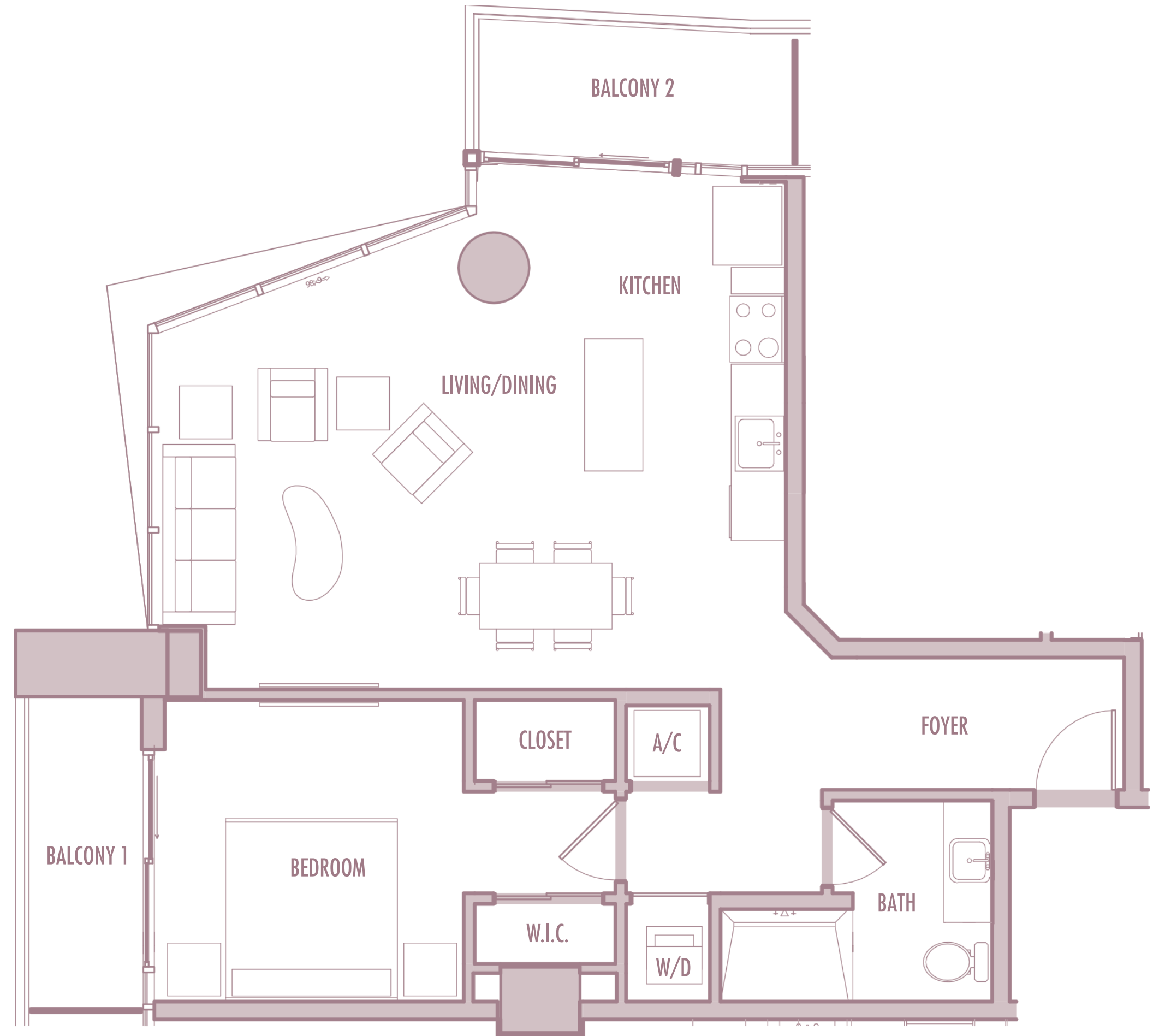
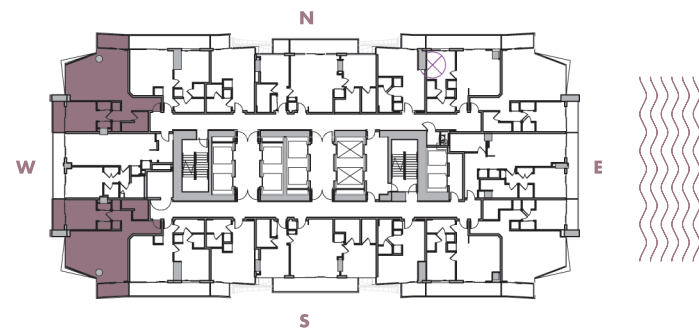
1 BEDROOM + 1 BATHROOM

LEVELS : 36-49

INTERIOR : 885 SqFt 82 SqM

BALCONY : 125 SqFt 12 SqM

TOTAL : 1,010 SqFt 94 SqM



Given the nature of condominium ownership, the Unit boundaries are precisely defined in such a manner so that all components of the Building which are (or are potentially) utilized either by other Units or the Common Elements are excluded from the Unit. This would exclude, for instance, all structural walls, columns etc. and essentially limits the Unit boundaries to the interior airspace between the perimeter walls and excludes all interior structural components. For the precise Unit boundaries, see Section 3.2 of the Declaration. For your reference, the area of the Unit, determined in accordance with these defined Unit boundaries, is set forth hereon (and labeled as "Unit Area"). Please note that the unique way of defining the boundaries actually makes the Unit appear to be smaller than it actually would be if standard architectural measuring techniques were used. Typically, apartments are measured to the exterior boundaries of the exterior walls and to the centerline of interior demising walls or to the exterior of walls adjoining corridors or other Common Elements without excluding areas that may be occupied by columns or other structural components.

A-2

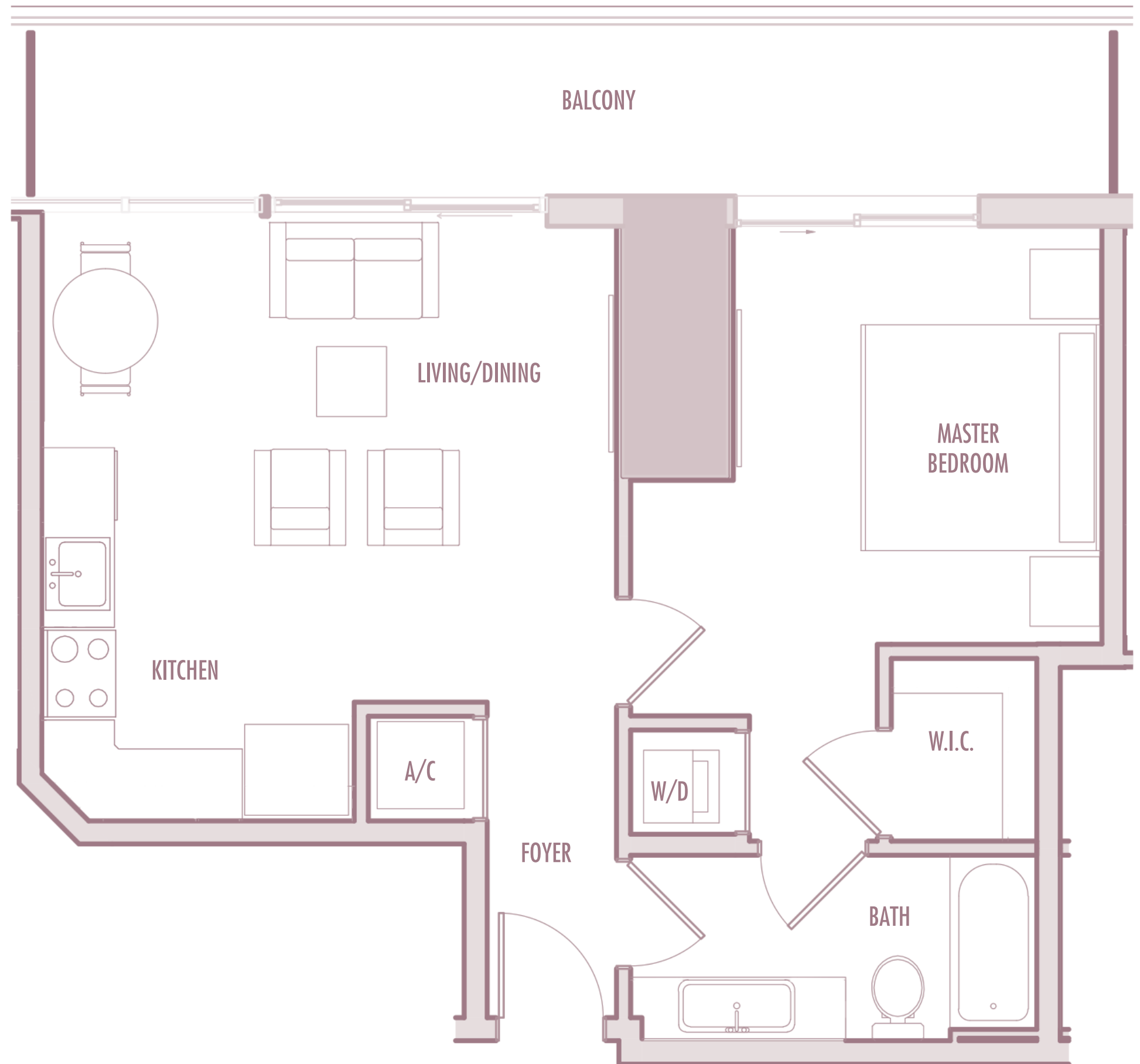
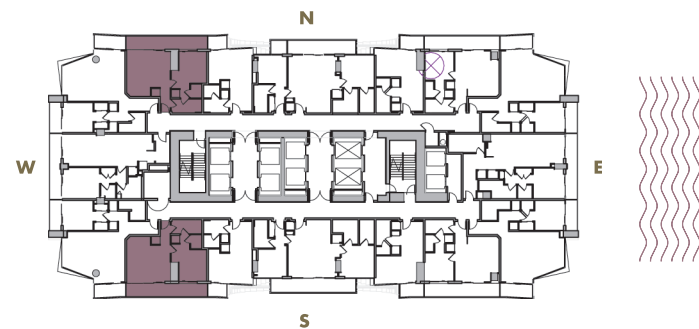
1 BEDROOM + 1 BATHROOM

LEVELS : 36-49

INTERIOR : 665 SqFt 62 SqM

BALCONY : 170 SqFt 16 SqM

TOTAL : 835 SqFt 78 SqM



Given the nature of condominium ownership, the Unit boundaries are precisely defined in such a manner so that all components of the Building which are (or are potentially) utilized either by other Units or the Common Elements are excluded from the Unit. This would exclude, for instance, all structural walls, columns etc. and essentially limits the Unit boundaries to the interior airspace between the perimeter walls and excludes all interior structural components. For the precise Unit boundaries, see Section 3.2 of the Declaration. For your reference, the area of the Unit, determined in accordance with these defined Unit boundaries, is set forth hereon (and labeled as "Unit Area"). Please note that the unique way of defining the boundaries actually makes the Unit appear to be smaller than it actually would be if standard architectural measuring techniques were used. Typically, apartments are measured to the exterior boundaries of the exterior walls and to the centerline of interior demising walls or to the exterior of walls adjoining corridors or other Common Elements without excluding areas that may be occupied by columns or other structural components.

A-3

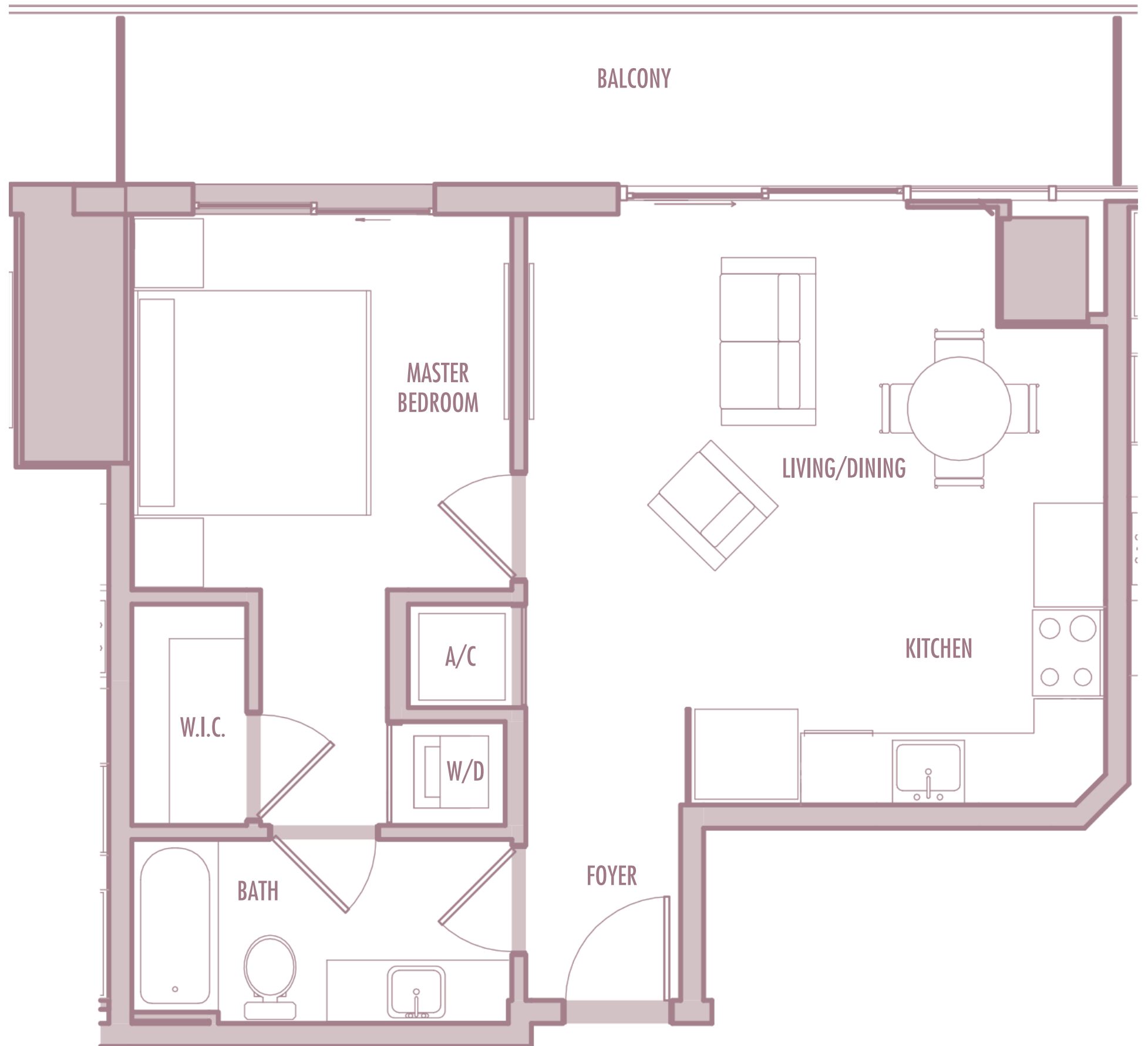
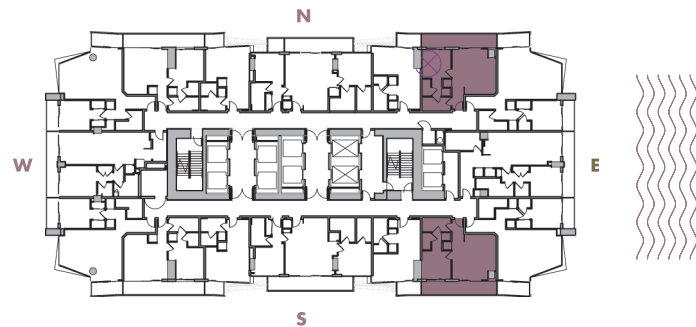
1 BEDROOM + 1 BATHROOM

LEVELS : 36-49

INTERIOR : 645 SqFt 60 SqM

BALCONY : 160 SqFt 15 SqM

TOTAL : 805 SqFt 75 SqM



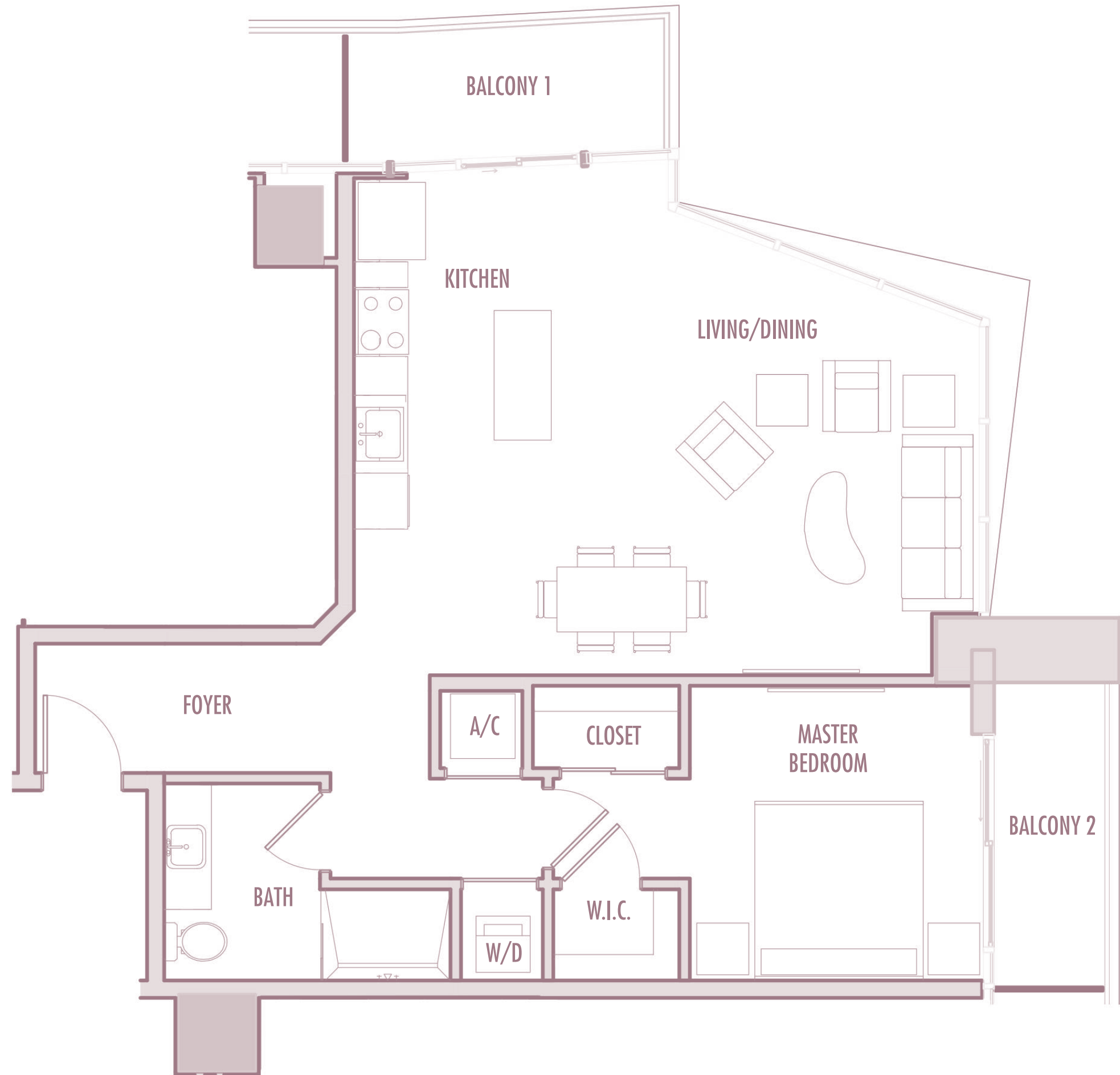
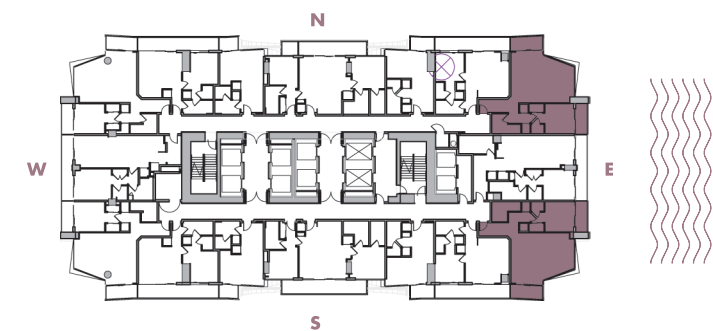
Given the nature of condominium ownership, the Unit boundaries are precisely defined in such a manner so that all components of the Building which are (or are potentially) utilized either by other Units or the Common Elements are excluded from the Unit. This would exclude, for instance, all structural walls, columns etc. and essentially limits the Unit boundaries to the interior airspace between the perimeter walls and excludes all interior structural components. For the precise Unit boundaries, see Section 3.2 of the Declaration. For your reference, the area of the Unit, determined in accordance with these defined Unit boundaries, is set forth hereon (and labeled as "Unit Area"). Please note that the unique way of defining the boundaries actually makes the Unit appear to be smaller than it actually would be if standard architectural measuring techniques were used. Typically, apartments are measured to the exterior boundaries of the exterior walls and to the centerline of interior demising walls or to the exterior of walls adjoining corridors or other Common Elements without excluding areas that may be occupied by columns or other structural components.

A-4

1 BEDROOM + 1 BATHROOM

LEVELS : 36-49

INTERIOR	: 890 SqFt	83 SqM
BALCONY	: 125 SqFt	12 SqM
TOTAL	: 1,015 SqFt	94 SqM



Given the nature of condominium ownership, the Unit boundaries are precisely defined in such a manner so that all components of the Building which are (or are potentially) utilized either by other Units or the Common Elements are excluded from the Unit. This would exclude, for instance, all structural walls, columns etc. and essentially limits the Unit boundaries to the interior airspace between the perimeter walls and excludes all interior structural components. For the precise Unit boundaries, see Section 3.2 of the Declaration. For your reference, the area of the Unit, determined in accordance with these defined Unit boundaries, is set forth hereon (and labeled as "Unit Area"). Please note that the unique way of defining the boundaries actually makes the Unit appear to be smaller than it actually would be if standard architectural measuring techniques were used. Typically, apartments are measured to the exterior boundaries of the exterior walls and to the centerline of interior demising walls or to the exterior of walls adjoining corridors or other Common Elements without excluding areas that may be occupied by columns or other structural components.

A-5

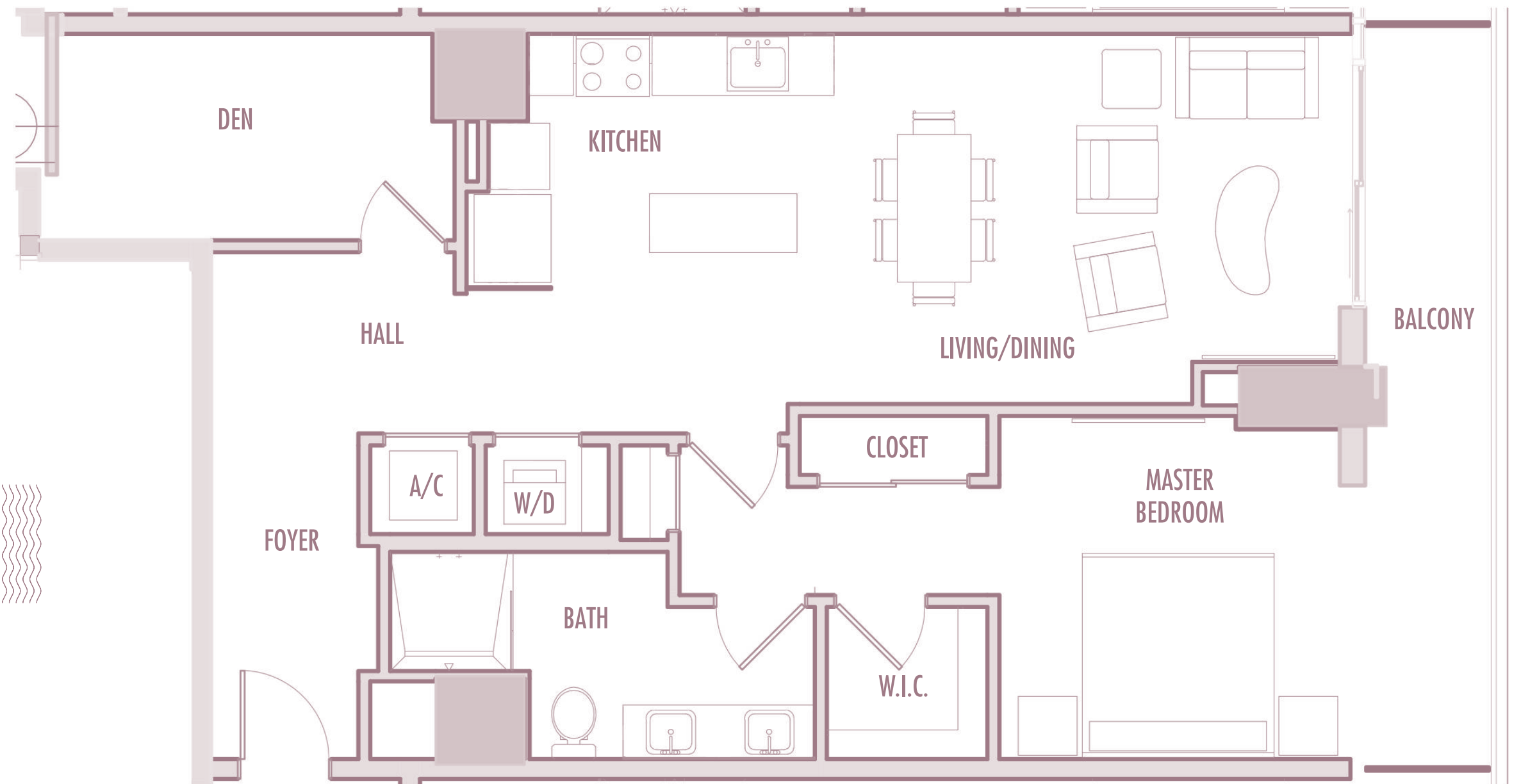
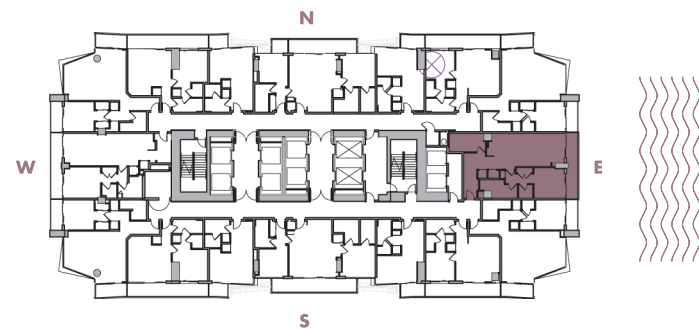
1 BEDROOM + DEN + 1 BATHROOM

LEVELS : 36-49

INTERIOR : 1,045 SqFt 97 SqM

BALCONY : 120 SqFt 11 SqM

TOTAL : 1,165 SqFt 108 SqM



Given the nature of condominium ownership, the Unit boundaries are precisely defined in such a manner so that all components of the Building which are (or are potentially) utilized either by other Units or the Common Elements are excluded from the Unit. This would exclude, for instance, all structural walls, columns etc. and essentially limits the Unit boundaries to the interior airspace between the perimeter walls and excludes all interior structural components. For the precise Unit boundaries, see Section 3.2 of the Declaration. For your reference, the area of the Unit, determined in accordance with these defined Unit boundaries, is set forth hereon (and labeled as "Unit Area"). Please note that the unique way of defining the boundaries actually makes the Unit appear to be smaller than it actually would be if standard architectural measuring techniques were used. Typically, apartments are measured to the exterior boundaries of the exterior walls and to the centerline of interior demising walls or to the exterior of walls adjoining corridors or other Common Elements without excluding areas that may be occupied by columns or other structural components.

A-6

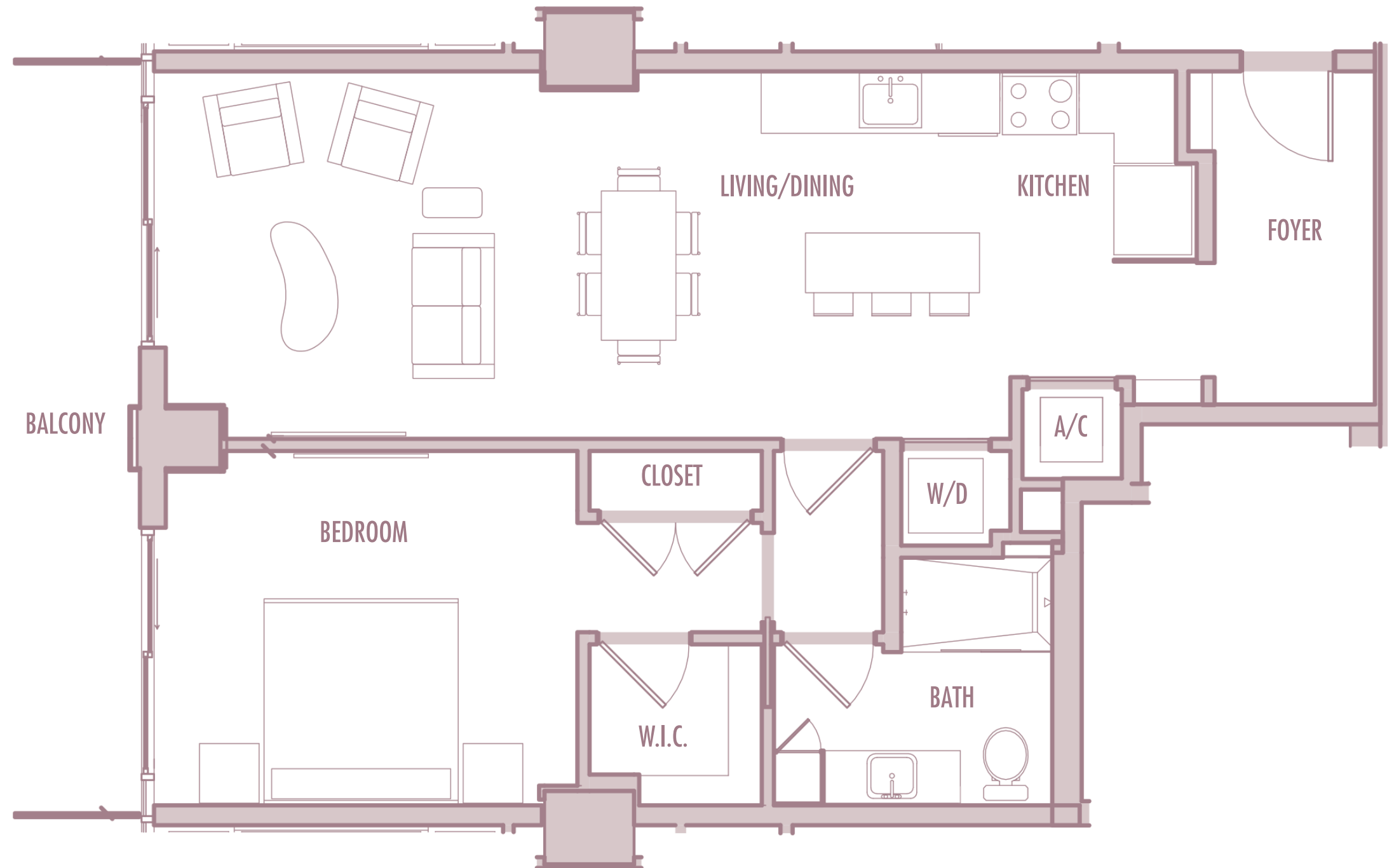
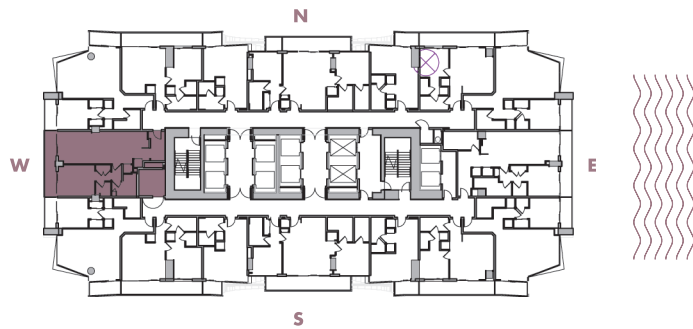
1 BEDROOM + 1 BATHROOM

LEVELS : 36-54

INTERIOR : 915 SqFt 85 SqM

BALCONY : 120 SqFt 11 SqM

TOTAL : 1,035 SqFt 96 SqM



Given the nature of condominium ownership, the Unit boundaries are precisely defined in such a manner so that all components of the Building which are (or are potentially) utilized either by other Units or the Common Elements are excluded from the Unit. This would exclude, for instance, all structural walls, columns etc. and essentially limits the Unit boundaries to the interior airspace between the perimeter walls and excludes all interior structural components. For the precise Unit boundaries, see Section 3.2 of the Declaration. For your reference, the area of the Unit, determined in accordance with these defined Unit boundaries, is set forth hereon (and labeled as "Unit Area"). Please note that the unique way of defining the boundaries actually makes the Unit appear to be smaller than it actually would be if standard architectural measuring techniques were used. Typically, apartments are measured to the exterior boundaries of the exterior walls and to the centerline of interior demising walls or to the exterior of walls adjoining corridors or other Common Elements without excluding areas that may be occupied by columns or other structural components.

A-7

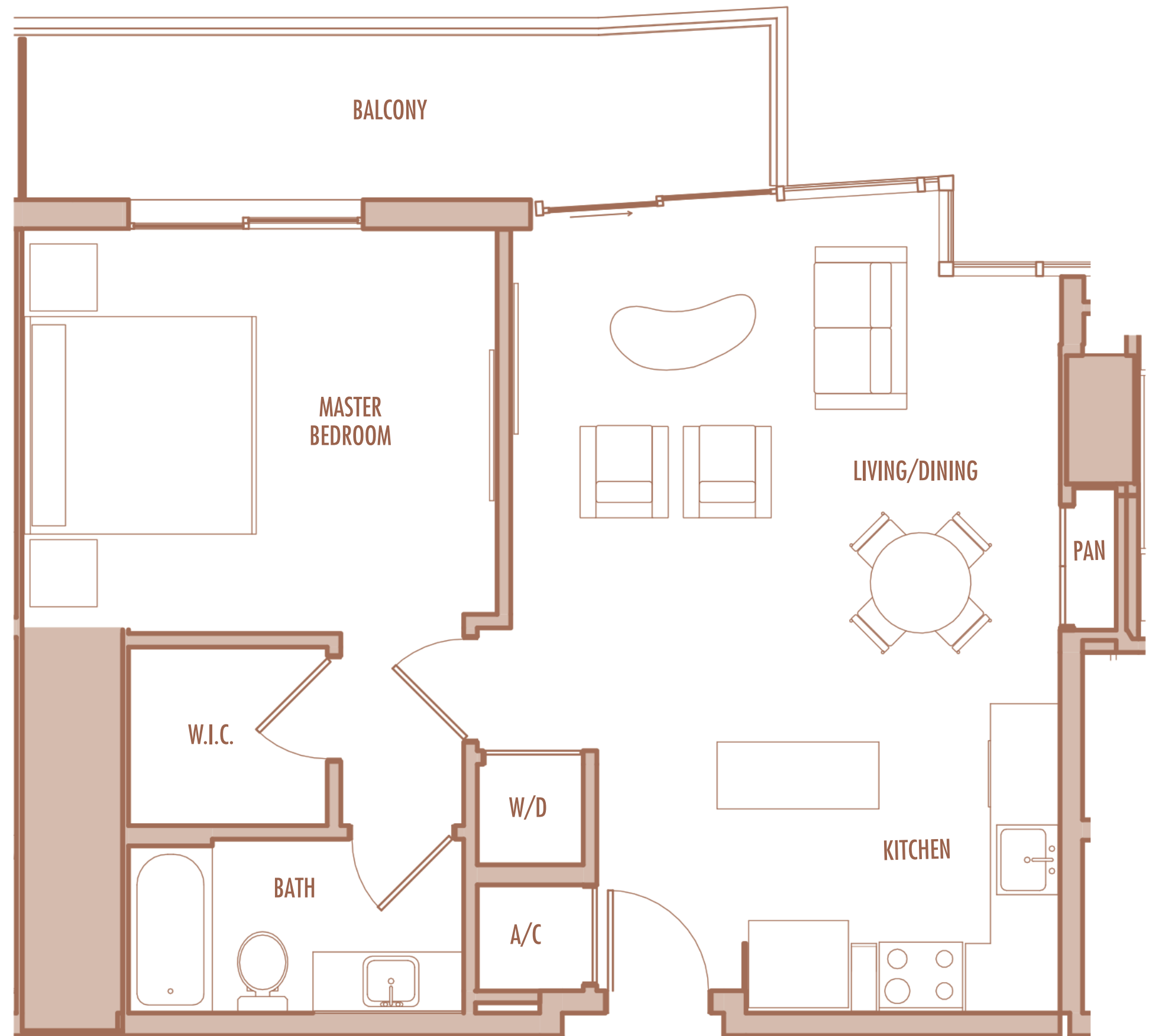
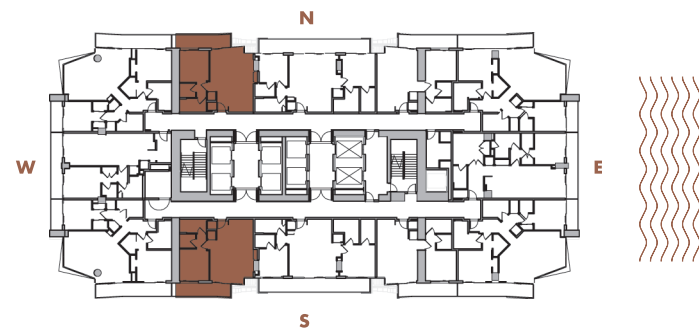
1 BEDROOM + 1 BATHROOM

LEVELS : 50 (HOTEL RESIDENCE)
: 51-54 (SKY RESIDENCE)

INTERIOR : 750 SqFt 70 SqM

BALCONY : 120-130 SqFt 11-12 SqM

TOTAL : 870-880 SqFt 81-82 SqM



Given the nature of condominium ownership, the Unit boundaries are precisely defined in such a manner so that all components of the Building which are (or are potentially) utilized either by other Units or the Common Elements are excluded from the Unit. This would exclude, for instance, all structural walls, columns etc. and essentially limits the Unit boundaries to the interior airspace between the perimeter walls and excludes all interior structural components. For the precise Unit boundaries, see Section 3.2 of the Declaration. For your reference, the area of the Unit, determined in accordance with these defined Unit boundaries, is set forth hereon (and labeled as "Unit Area"). Please note that the unique way of defining the boundaries actually makes the Unit appear to be smaller than it actually would be if standard architectural measuring techniques were used. Typically, apartments are measured to the exterior boundaries of the exterior walls and to the centerline of interior demising walls or to the exterior of walls adjoining corridors or other Common Elements without excluding areas that may be occupied by columns or other structural components.

A-8

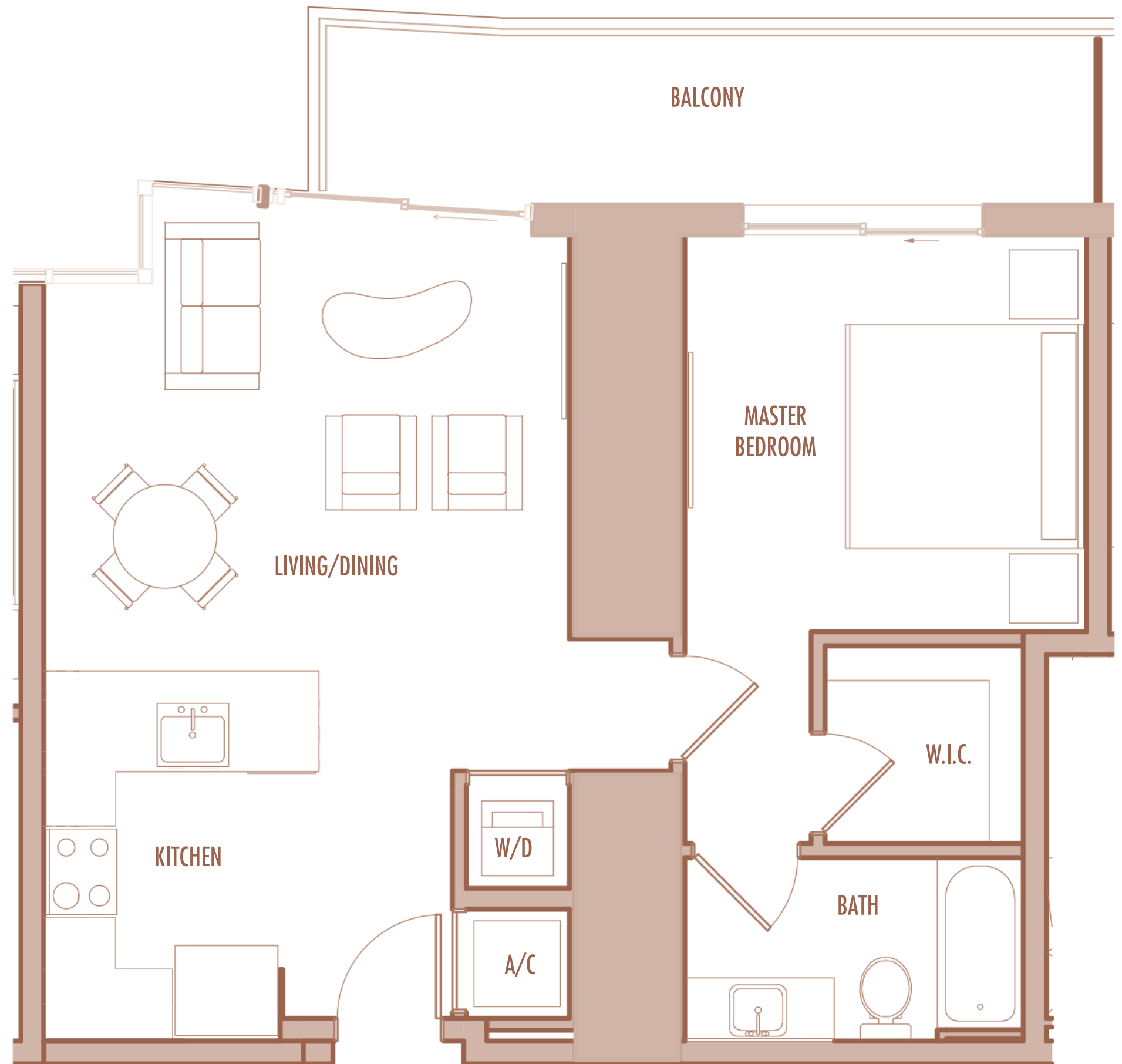
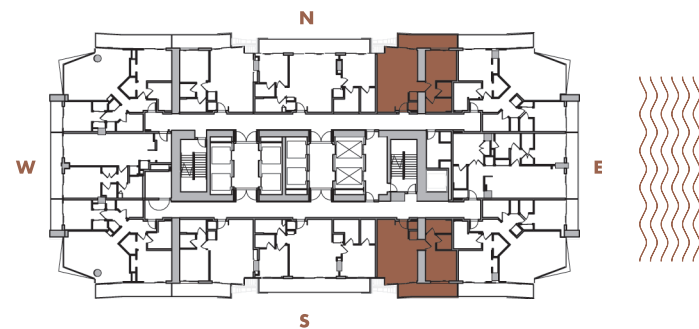
1 BEDROOM + 1 BATHROOM

LEVELS : 50 (HOTEL RESIDENCE)
: 51-53 (SKY RESIDENCE)

INTERIOR : 745 SqFt 69 SqM

BALCONY : 120-130 SqFt 11-12 SqM

TOTAL : 865-875 SqFt 80-81 SqM



Given the nature of condominium ownership, the Unit boundaries are precisely defined in such a manner so that all components of the Building which are (or are potentially) utilized either by other Units or the Common Elements are excluded from the Unit. This would exclude, for instance, all structural walls, columns etc. and essentially limits the Unit boundaries to the interior airspace between the perimeter walls and excludes all interior structural components. For the precise Unit boundaries, see Section 3.2 of the Declaration. For your reference, the area of the Unit, determined in accordance with these defined Unit boundaries, is set forth hereon (and labeled as "Unit Area"). Please note that the unique way of defining the boundaries actually makes the Unit appear to be smaller than it actually would be if standard architectural measuring techniques were used. Typically, apartments are measured to the exterior boundaries of the exterior walls and to the centerline of interior demising walls or to the exterior of walls adjoining corridors or other Common Elements without excluding areas that may be occupied by columns or other structural components.

A-14

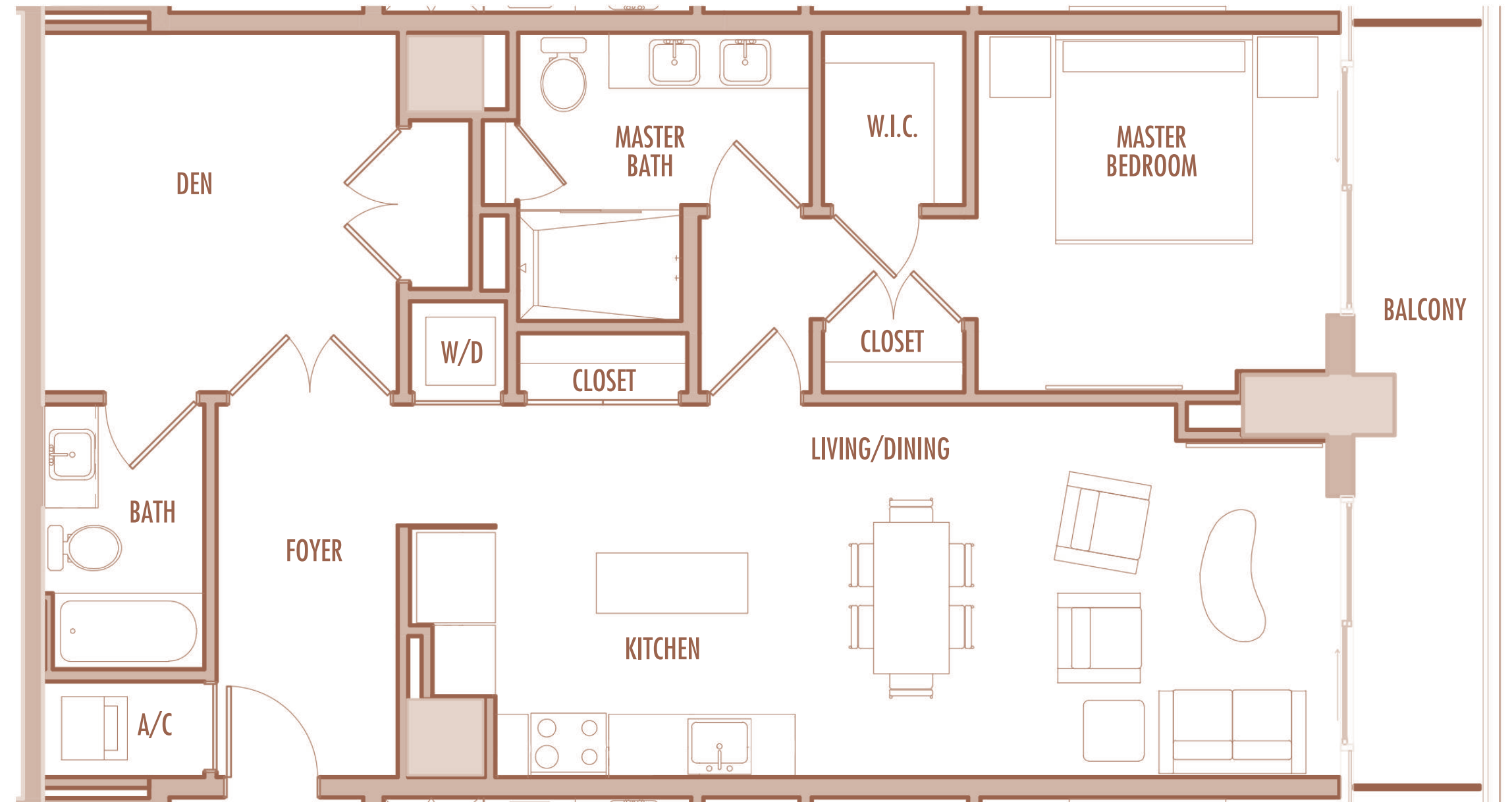
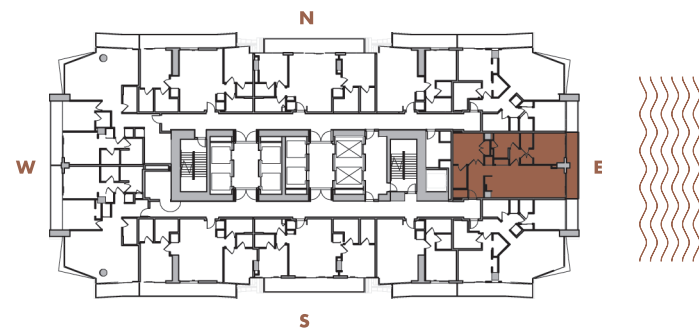
1 BEDROOM + DEN + 2 BATHROOM

LEVELS : 50 (HOTEL RESIDENCE)
: 51-56 (SKY RESIDENCE)

INTERIOR : 1,110 SqFt 103 SqM

BALCONY : 120 SqFt 11 SqM

TOTAL : 1,230 SqFt 114 SqM



Given the nature of condominium ownership, the Unit boundaries are precisely defined in such a manner so that all components of the Building which are (or are potentially) utilized either by other Units or the Common Elements are excluded from the Unit. This would exclude, for instance, all structural walls, columns etc. and essentially limits the Unit boundaries to the interior airspace between the perimeter walls and excludes all interior structural components. For the precise Unit boundaries, see Section 3.2 of the Declaration. For your reference, the area of the Unit, determined in accordance with these defined Unit boundaries, is set forth hereon (and labeled as "Unit Area"). Please note that the unique way of defining the boundaries actually makes the Unit appear to be smaller than it actually would be if standard architectural measuring techniques were used. Typically, apartments are measured to the exterior boundaries of the exterior walls and to the centerline of interior demising walls or to the exterior of walls adjoining corridors or other Common Elements without excluding areas that may be occupied by columns or other structural components.