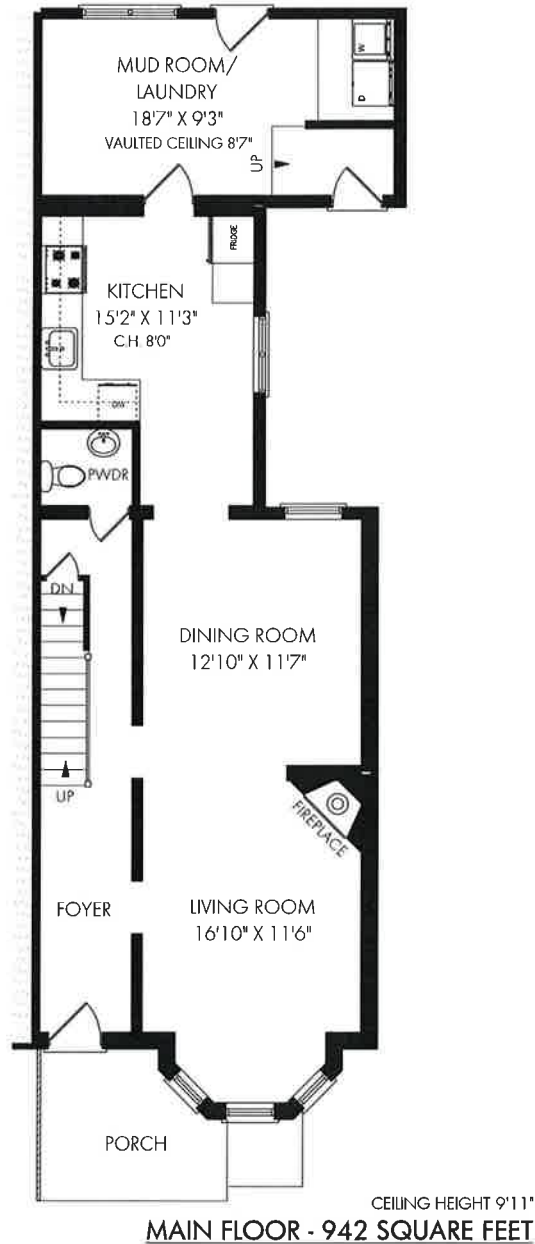


320 DOVERCOURT RD

Above Grade: 1658 Sq Ft

Total 2402 Sq Ft



JONATHAN FERRIER

Sales Representative

cell 416.567.0907 **office** 416.925.9191

email info@jonathanferrier.com **website** jonathanferrier.com

Chestnut Park Real Estate Limited, Brokerage
1300 Yonge Street, Suite 100, Toronto Ontario, M4T 1X3

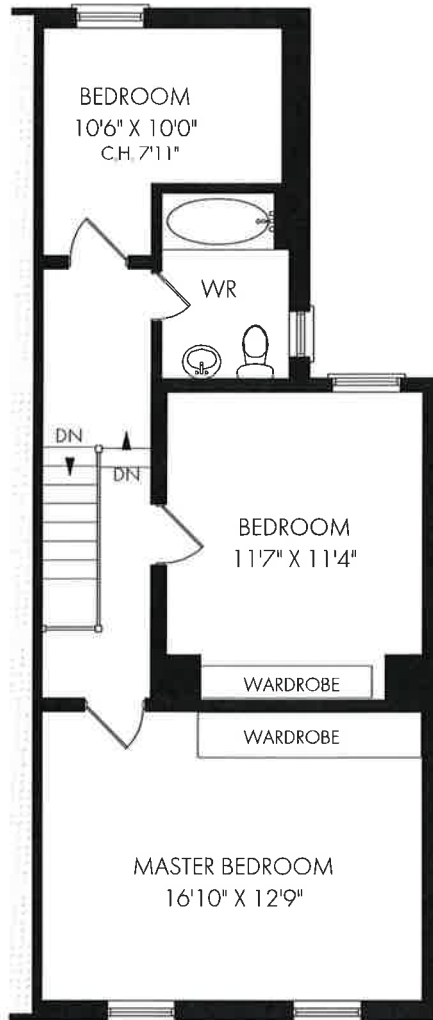
The information contained in the fact sheet has been supplied to chestnut park real estate limited by the owner of the property. Chestnut Park has relied on the owner's representations for the purposes of preparing the fact sheet.



320 DOVERCOURT RD

Above Grade: 1658 Sq Ft

Total 2402 Sq Ft



CEILING HEIGHT 8'7"

SECOND FLOOR - 716 SQUARE FEET



JONATHAN FERRIER

Sales Representative

cell 416.567.0907 **office** 416.925.9191

email info@jonathanferrier.com **website** jonathanferrier.com

Chestnut Park Real Estate Limited, Brokerage

1300 Yonge Street, Suite 100, Toronto Ontario, M4T 1X3

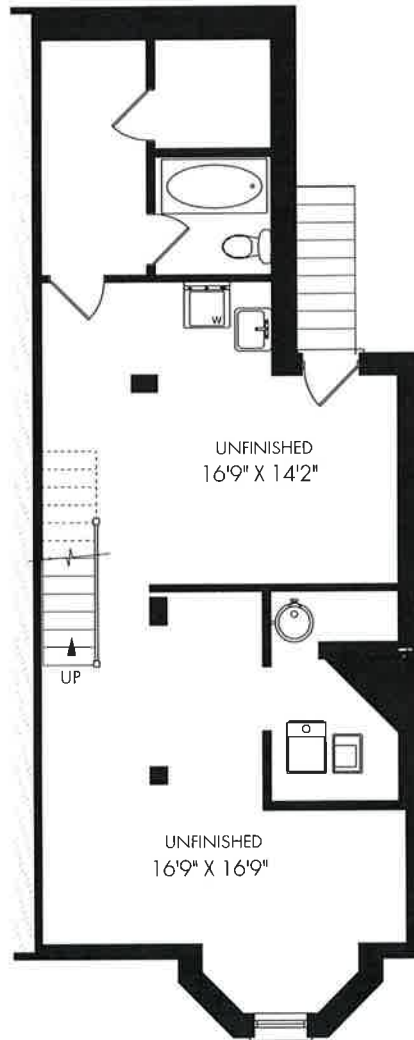
The information contained in the fact sheet has been supplied to chestnut park real estate limited by the owner of the property. Chestnut Park has relied on the owner's representations for the purposes of preparing the fact sheet.



320 DOVERCOURT RD

Above Grade: 1658 Sq Ft

Total 2402 Sq Ft



BASEMENT - 746 SQUARE FEET



JONATHAN FERRIER

Sales Representative

cell 416.567.0907 **office** 416.925.9191

email info@jonathanferrier.com **website** jonathanferrier.com

Chestnut Park Real Estate Limited, Brokerage

1300 Yonge Street, Suite 100, Toronto Ontario, M4T 1X3

The information contained in the fact sheet has been supplied to chestnut park real estate limited by the owner of the property. Chestnut Park has relied on the owner's representations for the purposes of preparing the fact sheet.

