

ALBA

PALM BEACH



ALBA

PALM BEACH

*Paradise Has Finally Found It's Way Home.*



ORAL REPRESENTATIONS CANNOT BE RELIED UPON AS CORRECTLY STATING THE REPRESENTATIONS OF THE DEVELOPER. FOR CORRECT REPRESENTATIONS, MAKE REFERENCE AND TO THE DOCUMENTS REQUIRED BY SECTION 718.503, FLORIDA STATUTES, TO BE FURNISHED BY A DEVELOPER TO A BUYER OR LESSEE.

THE COMPLETE OFFERING TERMS ARE IN A CPS-12 APPLICATION AVAILABLE FROM THE OFFEROR. FILE NO. CP23-0044

All square footages and dimensions, including (without limitation) ceiling heights, are estimates based on preliminary plans and will vary with actual construction. All floor plans, specifications and other development plans are proposed and conceptual only and are subject to change and will not necessarily accurately reflect the final plans and specifications. Stated square footages and dimensions are measured to the exterior boundaries of the exterior walls and outside corridor wall, and the centerline of interior demising walls between units and in fact vary from the square footages and dimensions that would be determined by using the description and definition of the "Unit" set forth in the Declaration, which generally only includes the interior airspace between the perimeter walls and excludes all interior structural components and other common elements or shared facilities. The method of measurement used herein is generally found in sales materials and is provided to allow a prospective buyer to compare the Units with units in other condominium projects that utilize the same method. For your reference, the dimensions of the Unit determined as set forth in the Declaration, are set forth in Exhibit "2" to the Declaration of Condominium. Measurements of rooms set forth on this floor plan are generally taken at the farthest points of each given room (as described above and as if the room were a perfect rectangle), without regard for any cutouts, soffits or other variations. Accordingly, the interior air space dimensions of the actual room will be smaller than the product obtained by multiplying the stated length and width. Terraces and other exterior areas are not part of the Unit. © Scuba Club WPB, LLC. All Rights Reserved.

## Lower Penthouse Collection

LPH-A

3 BEDROOMS + DEN | 3.5 BATHROOMS



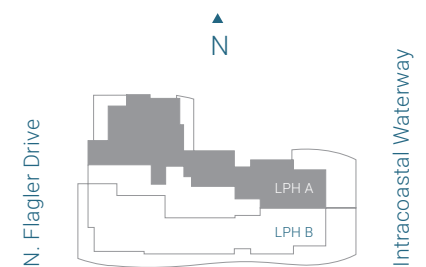
# RESIDENCE LPH-A

Floors 20-21



3 BEDROOMS + DEN | 3.5 BATHROOMS

INTERIOR	2,770 SQ FT	257 SQ M
TERRACE	1,065 SQ FT	99 SQ M
TOTAL	3,835 SQ FT	356 SQ M



ALBA

PALM BEACH



ALBA

PALM BEACH

*Paradise Has Finally Found It's Way Home.*



ORAL REPRESENTATIONS CANNOT BE RELIED UPON AS CORRECTLY STATING THE REPRESENTATIONS OF THE DEVELOPER. FOR CORRECT REPRESENTATIONS, MAKE REFERENCE AND TO THE DOCUMENTS REQUIRED BY SECTION 718.503, FLORIDA STATUTES, TO BE FURNISHED BY A DEVELOPER TO A BUYER OR LESSEE.

THE COMPLETE OFFERING TERMS ARE IN A CPS-12 APPLICATION AVAILABLE FROM THE OFFEROR. FILE NO. CP23-0044

All square footages and dimensions, including (without limitation) ceiling heights, are estimates based on preliminary plans and will vary with actual construction. All floor plans, specifications and other development plans are proposed and conceptual only and are subject to change and will not necessarily accurately reflect the final plans and specifications. Stated square footages and dimensions are measured to the exterior boundaries of the exterior walls and outside corridor wall, and the centerline of interior demising walls between units and in fact vary from the square footages and dimensions that would be determined by using the description and definition of the "Unit" set forth in the Declaration, which generally only includes the interior airspace between the perimeter walls and excludes all interior structural components and other common elements or shared facilities. The method of measurement used herein is generally found in sales materials and is provided to allow a prospective buyer to compare the Units with units in other condominium projects that utilize the same method. For your reference, the dimensions of the Unit determined as set forth in the Declaration, are set forth in Exhibit "2" to the Declaration of Condominium. Measurements of rooms set forth on this floor plan are generally taken at the farthest points of each given room (as described above and as if the room were a perfect rectangle), without regard for any cutouts, soffits or other variations. Accordingly, the interior air space dimensions of the actual room will be smaller than the product obtained by multiplying the stated length and width. Terraces and other exterior areas are not part of the Unit. © Scuba Club WPB, LLC. All Rights Reserved.

## *Lower Penthouse Collection*

LPH-A - 19th Floor

3 BEDROOMS + DEN | 3.5 BATHROOMS



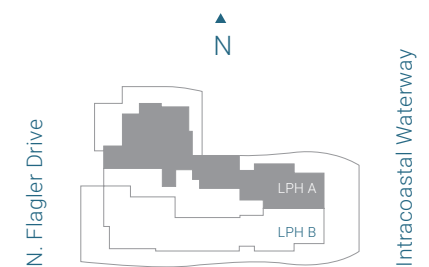
# RESIDENCE LPH-A

Floors 19



3 BEDROOMS + DEN | 3.5 BATHROOMS

INTERIOR	2,770 SQ FT	257 SQ M
TERRACE	1,928 SQ FT	179 SQ M
TOTAL	4,698 SQ FT	436 SQ M



ALBA

PALM BEACH



ALBA

PALM BEACH

*Paradise Has Finally Found It's Way Home.*



ORAL REPRESENTATIONS CANNOT BE RELIED UPON AS CORRECTLY STATING THE REPRESENTATIONS OF THE DEVELOPER. FOR CORRECT REPRESENTATIONS, MAKE REFERENCE AND TO THE DOCUMENTS REQUIRED BY SECTION 718.503, FLORIDA STATUTES, TO BE FURNISHED BY A DEVELOPER TO A BUYER OR LESSEE.

THE COMPLETE OFFERING TERMS ARE IN A CPS-12 APPLICATION AVAILABLE FROM THE OFFEROR. FILE NO. CP23-0044

All square footages and dimensions, including (without limitation) ceiling heights, are estimates based on preliminary plans and will vary with actual construction. All floor plans, specifications and other development plans are proposed and conceptual only and are subject to change and will not necessarily accurately reflect the final plans and specifications. Stated square footages and dimensions are measured to the exterior boundaries of the exterior walls and outside corridor wall, and the centerline of interior demising walls between units and in fact vary from the square footages and dimensions that would be determined by using the description and definition of the "Unit" set forth in the Declaration, which generally only includes the interior airspace between the perimeter walls and excludes all interior structural components and other common elements or shared facilities. The method of measurement used herein is generally found in sales materials and is provided to allow a prospective buyer to compare the Units with units in other condominium projects that utilize the same method. For your reference, the dimensions of the Unit determined as set forth in the Declaration, are set forth in Exhibit "2" to the Declaration of Condominium. Measurements of rooms set forth on this floor plan are generally taken at the farthest points of each given room (as described above and as if the room were a perfect rectangle), without regard for any cutouts, soffits or other variations. Accordingly, the interior air space dimensions of the actual room will be smaller than the product obtained by multiplying the stated length and width. Terraces and other exterior areas are not part of the Unit. © Scuba Club WPB, LLC. All Rights Reserved.

## Lower Penthouse Collection

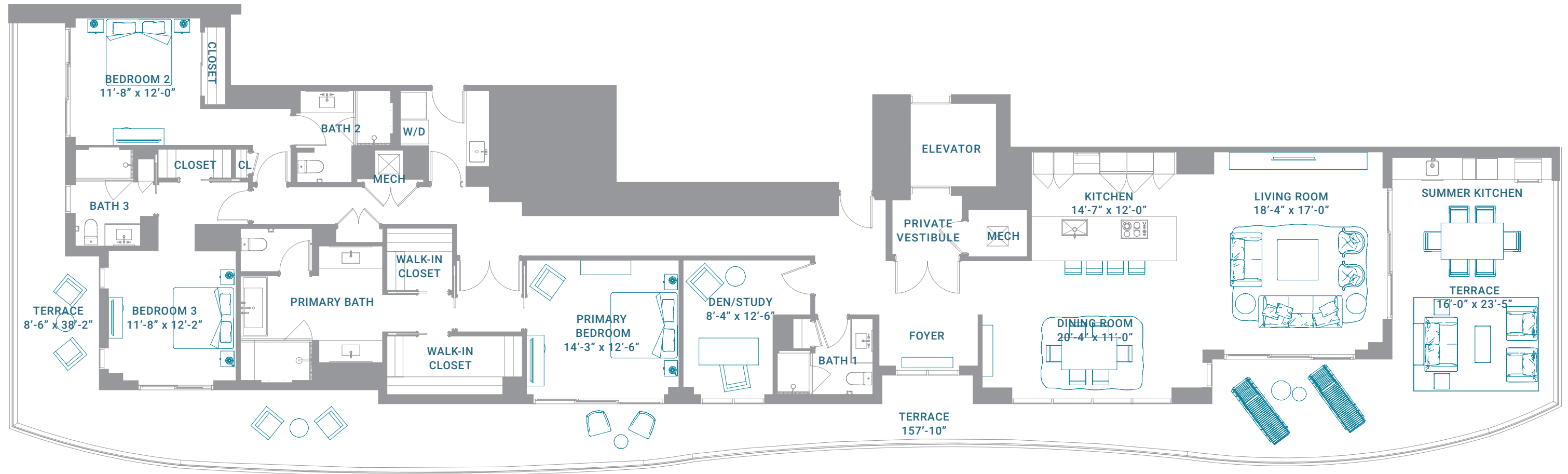
LPH-B

3 BEDROOMS + DEN | 4 BATHROOMS



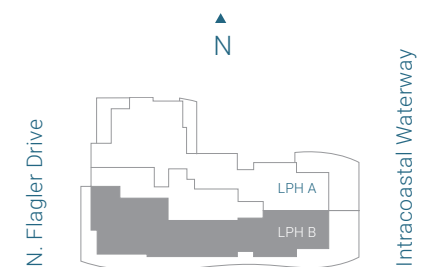
# RESIDENCE LPH-B

Floors 20-21



3 BEDROOMS + DEN | 4 BATHROOMS

INTERIOR	2,755 SQ FT	256 SQ M
TERRACE	1,500 SQ FT	139 SQ M
TOTAL	4,255 SQ FT	395 SQ M



ALBA

PALM BEACH



ALBA

PALM BEACH

*Paradise Has Finally Found It's Way Home.*



ORAL REPRESENTATIONS CANNOT BE RELIED UPON AS CORRECTLY STATING THE REPRESENTATIONS OF THE DEVELOPER. FOR CORRECT REPRESENTATIONS, MAKE REFERENCE AND TO THE DOCUMENTS REQUIRED BY SECTION 718.503, FLORIDA STATUTES, TO BE FURNISHED BY A DEVELOPER TO A BUYER OR LESSEE.

THE COMPLETE OFFERING TERMS ARE IN A CPS-12 APPLICATION AVAILABLE FROM THE OFFEROR. FILE NO. CP23-0044

All square footages and dimensions, including (without limitation) ceiling heights, are estimates based on preliminary plans and will vary with actual construction. All floor plans, specifications and other development plans are proposed and conceptual only and are subject to change and will not necessarily accurately reflect the final plans and specifications. Stated square footages and dimensions are measured to the exterior boundaries of the exterior walls and outside corridor wall, and the centerline of interior demising walls between units and in fact vary from the square footages and dimensions that would be determined by using the description and definition of the "Unit" set forth in the Declaration, which generally only includes the interior airspace between the perimeter walls and excludes all interior structural components and other common elements or shared facilities. The method of measurement used herein is generally found in sales materials and is provided to allow a prospective buyer to compare the Units with units in other condominium projects that utilize the same method. For your reference, the dimensions of the Unit determined as set forth in the Declaration, are set forth in Exhibit "2" to the Declaration of Condominium. Measurements of rooms set forth on this floor plan are generally taken at the farthest points of each given room (as described above and as if the room were a perfect rectangle), without regard for any cutouts, soffits or other variations. Accordingly, the interior air space dimensions of the actual room will be smaller than the product obtained by multiplying the stated length and width. Terraces and other exterior areas are not part of the Unit. © Scuba Club WPB, LLC. All Rights Reserved.

## Lower Penthouse Collection

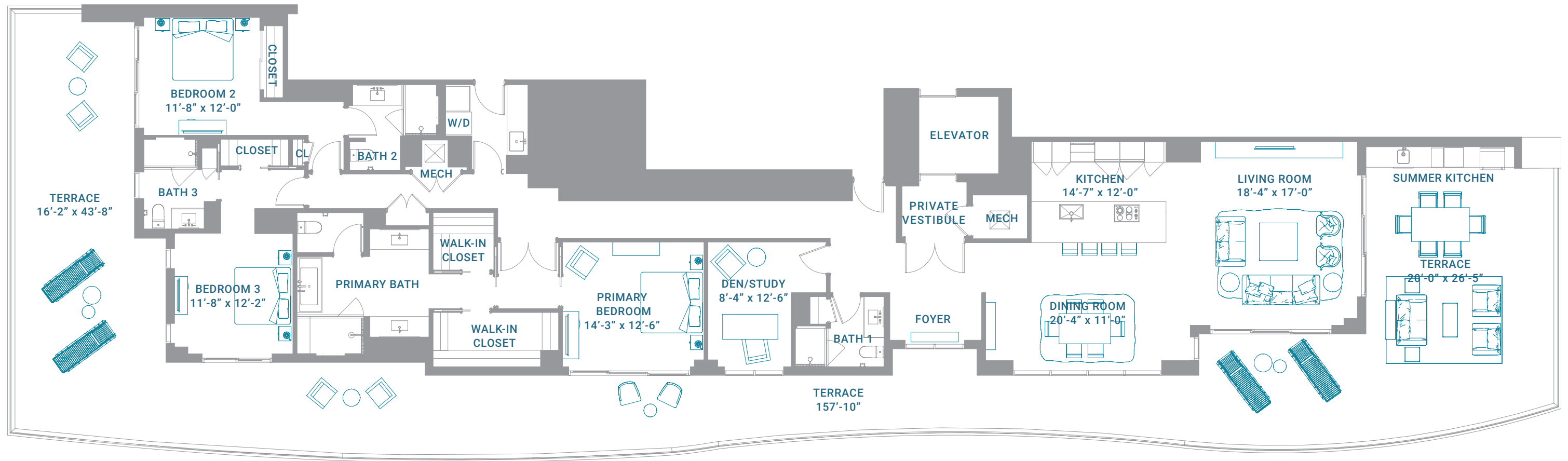
LPH-B - 19th Floor

3 BEDROOMS + DEN | 4 BATHROOMS



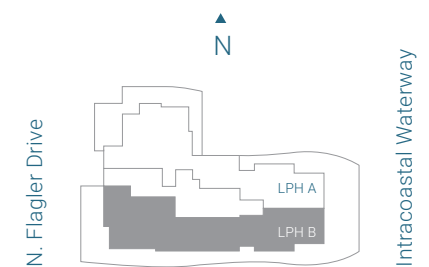
# RESIDENCE LPH-B

Floors 19



3 BEDROOMS + DEN | 4 BATHROOMS

INTERIOR	2,755 SQ FT	256 SQ M
TERRACE	2,140 SQ FT	199 SQ M
TOTAL	4,895 SQ FT	455 SQ M



ALBA

PALM BEACH



ALBA

PALM BEACH

*Paradise Has Finally Found It's Way Home.*



ORAL REPRESENTATIONS CANNOT BE RELIED UPON AS CORRECTLY STATING THE REPRESENTATIONS OF THE DEVELOPER. FOR CORRECT REPRESENTATIONS, MAKE REFERENCE AND TO THE DOCUMENTS REQUIRED BY SECTION 718.503, FLORIDA STATUTES, TO BE FURNISHED BY A DEVELOPER TO A BUYER OR LESSEE.

THE COMPLETE OFFERING TERMS ARE IN A CPS-12 APPLICATION AVAILABLE FROM THE OFFEROR. FILE NO. CP23-0044

All square footages and dimensions, including (without limitation) ceiling heights, are estimates based on preliminary plans and will vary with actual construction. All floor plans, specifications and other development plans are proposed and conceptual only and are subject to change and will not necessarily accurately reflect the final plans and specifications. Stated square footages and dimensions are measured to the exterior boundaries of the exterior walls and outside corridor wall, and the centerline of interior demising walls between units and in fact vary from the square footages and dimensions that would be determined by using the description and definition of the "Unit" set forth in the Declaration, which generally only includes the interior airspace between the perimeter walls and excludes all interior structural components and other common elements or shared facilities. The method of measurement used herein is generally found in sales materials and is provided to allow a prospective buyer to compare the Units with units in other condominium projects that utilize the same method. For your reference, the dimensions of the Unit determined as set forth in the Declaration, are set forth in Exhibit "2" to the Declaration of Condominium. Measurements of rooms set forth on this floor plan are generally taken at the farthest points of each given room (as described above and as if the room were a perfect rectangle), without regard for any cutouts, soffits or other variations. Accordingly, the interior air space dimensions of the actual room will be smaller than the product obtained by multiplying the stated length and width. Terraces and other exterior areas are not part of the Unit. © Scuba Club WPB, LLC. All Rights Reserved.

## *Signature Residences*

Residence A

3 BEDROOMS | 3.5 BATHROOMS



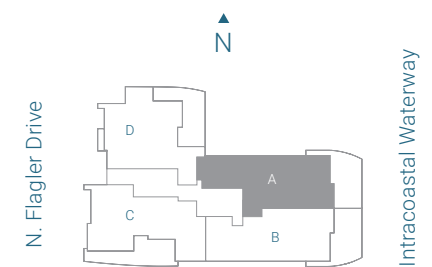
# RESIDENCE A

Floors 7 - 18



3 BEDROOMS | 3.5 BATHROOMS

INTERIOR	1,778 SQ FT	165 SQ M
EXTERIOR	556 SQ FT	52 SQ M
TOTAL	2,334 SQ FT	217 SQ M



ALBA

PALM BEACH



ALBA

PALM BEACH

*Paradise Has Finally Found It's Way Home.*



ORAL REPRESENTATIONS CANNOT BE RELIED UPON AS CORRECTLY STATING THE REPRESENTATIONS OF THE DEVELOPER. FOR CORRECT REPRESENTATIONS, MAKE REFERENCE AND TO THE DOCUMENTS REQUIRED BY SECTION 718.503, FLORIDA STATUTES, TO BE FURNISHED BY A DEVELOPER TO A BUYER OR LESSEE.

THE COMPLETE OFFERING TERMS ARE IN A CPS-12 APPLICATION AVAILABLE FROM THE OFFEROR. FILE NO. CP23-0044

All square footages and dimensions, including (without limitation) ceiling heights, are estimates based on preliminary plans and will vary with actual construction. All floor plans, specifications and other development plans are proposed and conceptual only and are subject to change and will not necessarily accurately reflect the final plans and specifications. Stated square footages and dimensions are measured to the exterior boundaries of the exterior walls and outside corridor wall, and the centerline of interior demising walls between units and in fact vary from the square footages and dimensions that would be determined by using the description and definition of the "Unit" set forth in the Declaration, which generally only includes the interior airspace between the perimeter walls and excludes all interior structural components and other common elements or shared facilities. The method of measurement used herein is generally found in sales materials and is provided to allow a prospective buyer to compare the Units with units in other condominium projects that utilize the same method. For your reference, the dimensions of the Unit determined as set forth in the Declaration, are set forth in Exhibit "2" to the Declaration of Condominium. Measurements of rooms set forth on this floor plan are generally taken at the farthest points of each given room (as described above and as if the room were a perfect rectangle), without regard for any cutouts, soffits or other variations. Accordingly, the interior air space dimensions of the actual room will be smaller than the product obtained by multiplying the stated length and width. Terraces and other exterior areas are not part of the Unit. © Scuba Club WPB, LLC. All Rights Reserved.

## Signature Residences

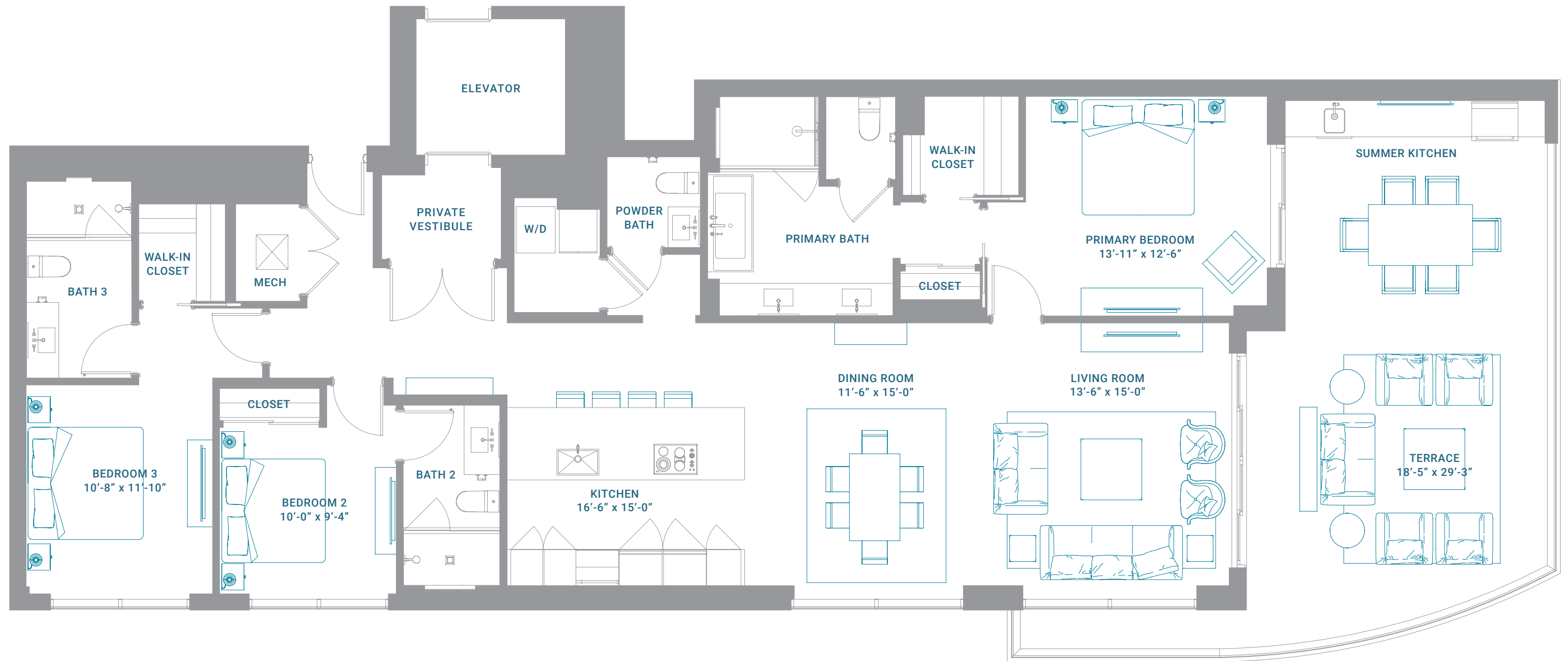
Residence B

3 BEDROOMS | 3.5 BATHROOMS



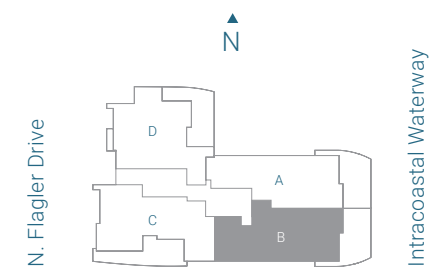
# RESIDENCE B

Floors 7 - 18



3 BEDROOMS | 3.5 BATHROOMS

INTERIOR	1,866 SQ FT	173 SQ M
TERRACE	556 SQ FT	52 SQ M
TOTAL	2,422 SQ FT	225 SQ M



# ALBA

PALM BEACH

SALES GALLERY & SHOWROOM  
250 N. Olive Avenue  
West Palm Beach, FL 33401

PROPERTY ADDRESS  
4714 N. Flagler Drive  
West Palm Beach, FL 33407

TELEPHONE  
561.944.3938

EMAIL  
sales@albapalmbeach.com

WEBSITE  
albapalmbeach.com



ORAL REPRESENTATIONS CANNOT BE RELIED UPON AS CORRECTLY STATING THE REPRESENTATIONS OF THE DEVELOPER. FOR CORRECT REPRESENTATIONS, MAKE REFERENCE AND TO THE DOCUMENTS REQUIRED BY SECTION 718.503, FLORIDA STATUTES, TO BE FURNISHED BY A DEVELOPER TO A BUYER OR LESSEE.

THE COMPLETE OFFERING TERMS ARE IN A CPS-12 APPLICATION AVAILABLE FROM THE OFFEROR. FILE NO. CP23-0044

All square footages and dimensions, including (without limitation) ceiling heights, are estimates based on preliminary plans and will vary with actual construction. All floor plans, specifications and other development plans are proposed and conceptual only and are subject to change and will not necessarily accurately reflect the final plans and specifications. Stated square footages and dimensions are measured to the exterior boundaries of the exterior walls and outside corridor wall, and the centerline of interior demising walls between units and in fact vary from the square footages and dimensions that would be determined by using the description and definition of the "Unit" set forth in the Declaration, which generally only includes the interior airspace between the perimeter walls and excludes all interior structural components and other common elements or shared facilities. The method of measurement used herein is generally found in sales materials and is provided to allow a prospective buyer to compare the Units with units in other condominium projects that utilize the same method. For your reference, the dimensions of the Unit determined as set forth in the Declaration, are set forth in Exhibit "2" to the Declaration of Condominium. Measurements of rooms set forth on this floor plan are generally taken at the farthest points of each given room (as described above and as if the room were a perfect rectangle), without regard for any cutouts, soffits or other variations. Accordingly, the interior air space dimensions of the actual room will be smaller than the product obtained by multiplying the stated length and width. Terraces and other exterior areas are not part of the Unit. © Scuba Club WPB, LLC. All Rights Reserved.

# ALBA

PALM BEACH

*Paradise Has Finally Found Its Way Home.*

## Signature Residences

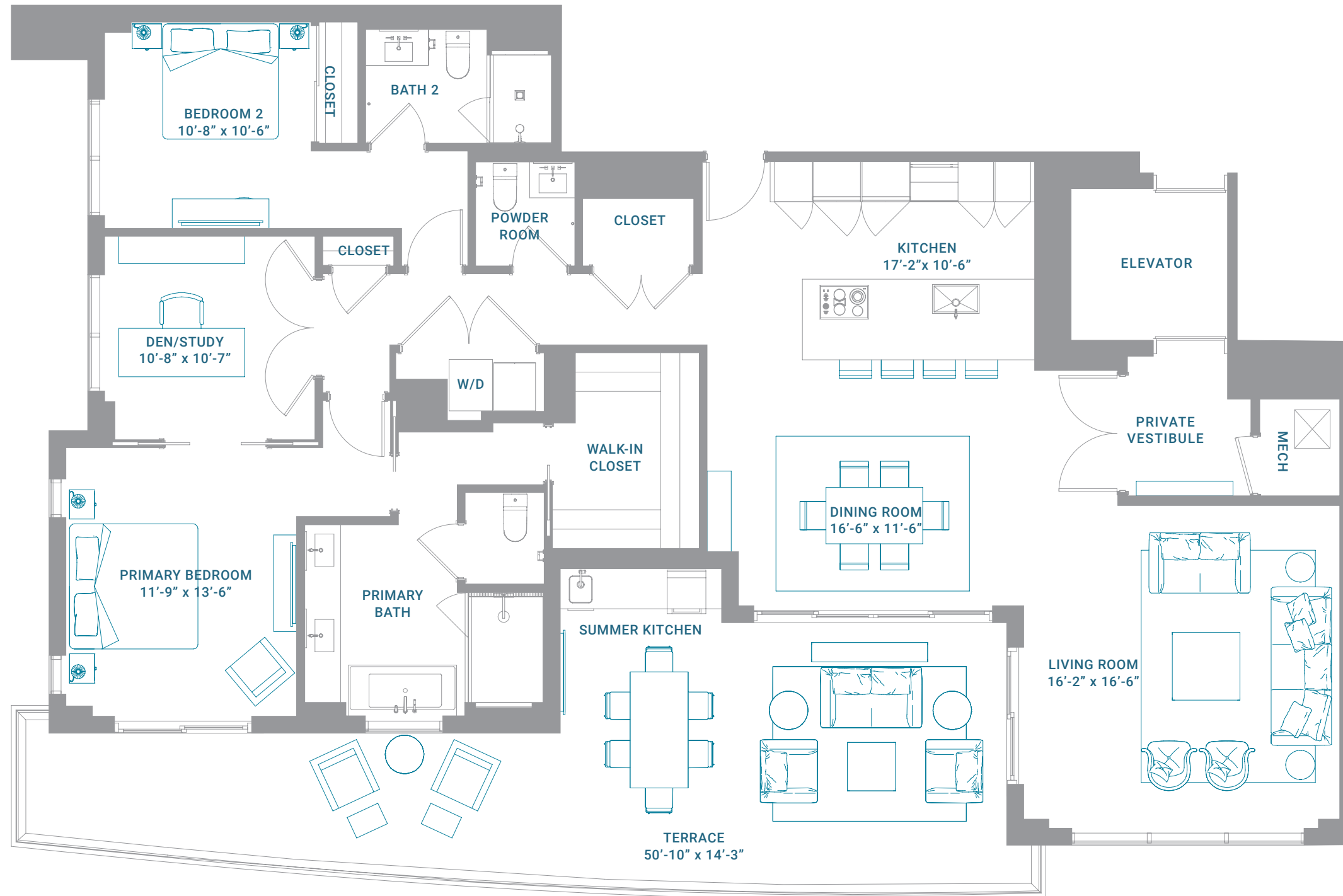
### Residence C

2 BEDROOMS + DEN | 2.5 BATHROOMS



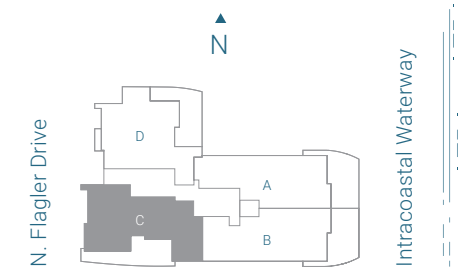
# RESIDENCE C

Floors 8 - 18



2 BEDROOMS + DEN | 2.5 BATHROOMS

INTERIOR	1,799 SQ FT	167 SQ M
TERRACE	570 SQ FT	53 SQ M
TOTAL	2,369 SQ FT	220 SQ M



ALBA

PALM BEACH



ALBA

PALM BEACH

*Paradise Has Finally Found It's Way Home.*



ORAL REPRESENTATIONS CANNOT BE RELIED UPON AS CORRECTLY STATING THE REPRESENTATIONS OF THE DEVELOPER. FOR CORRECT REPRESENTATIONS, MAKE REFERENCE AND TO THE DOCUMENTS REQUIRED BY SECTION 718.503, FLORIDA STATUTES, TO BE FURNISHED BY A DEVELOPER TO A BUYER OR LESSEE.

THE COMPLETE OFFERING TERMS ARE IN A CPS-12 APPLICATION AVAILABLE FROM THE OFFEROR. FILE NO. CP23-0044

All square footages and dimensions, including (without limitation) ceiling heights, are estimates based on preliminary plans and will vary with actual construction. All floor plans, specifications and other development plans are proposed and conceptual only and are subject to change and will not necessarily accurately reflect the final plans and specifications. Stated square footages and dimensions are measured to the exterior boundaries of the exterior walls and outside corridor wall, and the centerline of interior demising walls between units and in fact vary from the square footages and dimensions that would be determined by using the description and definition of the "Unit" set forth in the Declaration, which generally only includes the interior airspace between the perimeter walls and excludes all interior structural components and other common elements or shared facilities. The method of measurement used herein is generally found in sales materials and is provided to allow a prospective buyer to compare the Units with units in other condominium projects that utilize the same method. For your reference, the dimensions of the Unit determined as set forth in the Declaration, are set forth in Exhibit "2" to the Declaration of Condominium. Measurements of rooms set forth on this floor plan are generally taken at the farthest points of each given room (as described above and as if the room were a perfect rectangle), without regard for any cutouts, soffits or other variations. Accordingly, the interior air space dimensions of the actual room will be smaller than the product obtained by multiplying the stated length and width. Terraces and other exterior areas are not part of the Unit. © Scuba Club WPB, LLC. All Rights Reserved.

## Signature Residences

### Residence C

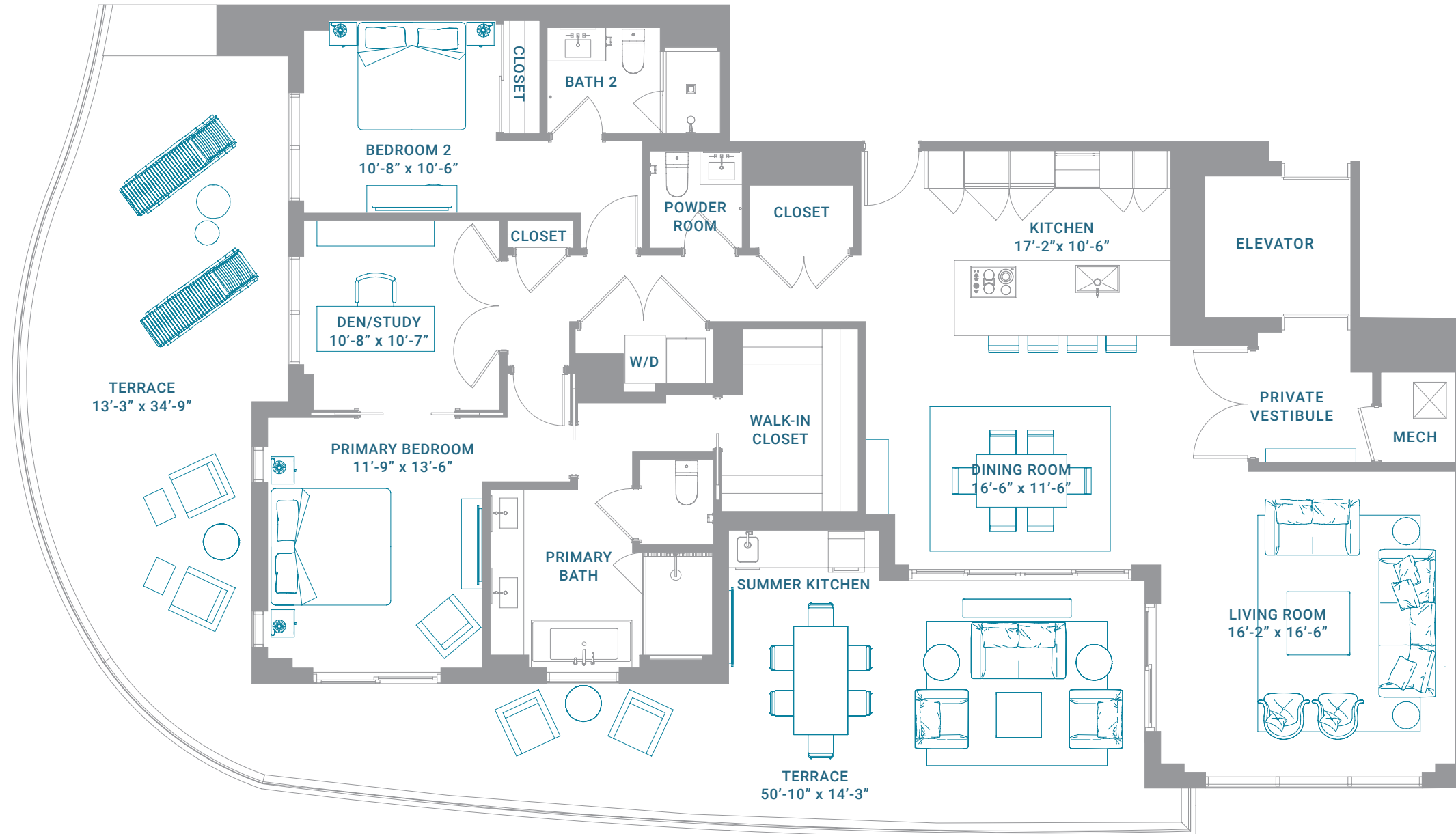
2 BEDROOMS + DEN | 2.5 BATHROOMS

7th Floor



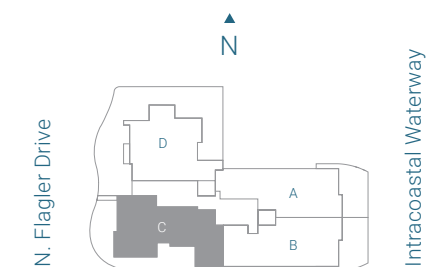
# RESIDENCE C

Floor 7



2 BEDROOMS + DEN | 2.5 BATHROOMS

INTERIOR	1,799 SQ FT	167 SQ M
TERRACE	954 SQ FT	89 SQ M
TOTAL	2,753 SQ FT	256 SQ M



ALBA

PALM BEACH



ALBA

PALM BEACH

*Paradise Has Finally Found It's Way Home.*



ORAL REPRESENTATIONS CANNOT BE RELIED UPON AS CORRECTLY STATING THE REPRESENTATIONS OF THE DEVELOPER. FOR CORRECT REPRESENTATIONS, MAKE REFERENCE AND TO THE DOCUMENTS REQUIRED BY SECTION 718.503, FLORIDA STATUTES, TO BE FURNISHED BY A DEVELOPER TO A BUYER OR LESSEE.

THE COMPLETE OFFERING TERMS ARE IN A CPS-12 APPLICATION AVAILABLE FROM THE OFFEROR. FILE NO. CP23-0044

All square footages and dimensions, including (without limitation) ceiling heights, are estimates based on preliminary plans and will vary with actual construction. All floor plans, specifications and other development plans are proposed and conceptual only and are subject to change and will not necessarily accurately reflect the final plans and specifications. Stated square footages and dimensions are measured to the exterior boundaries of the exterior walls and outside corridor wall, and the centerline of interior demising walls between units and in fact vary from the square footages and dimensions that would be determined by using the description and definition of the "Unit" set forth in the Declaration, which generally only includes the interior airspace between the perimeter walls and excludes all interior structural components and other common elements or shared facilities. The method of measurement used herein is generally found in sales materials and is provided to allow a prospective buyer to compare the Units with units in other condominium projects that utilize the same method. For your reference, the dimensions of the Unit determined as set forth in the Declaration, are set forth in Exhibit "2" to the Declaration of Condominium. Measurements of rooms set forth on this floor plan are generally taken at the farthest points of each given room (as described above and as if the room were a perfect rectangle), without regard for any cutouts, soffits or other variations. Accordingly, the interior air space dimensions of the actual room will be smaller than the product obtained by multiplying the stated length and width. Terraces and other exterior areas are not part of the Unit. © Scuba Club WPB, LLC. All Rights Reserved.

## Signature Residences

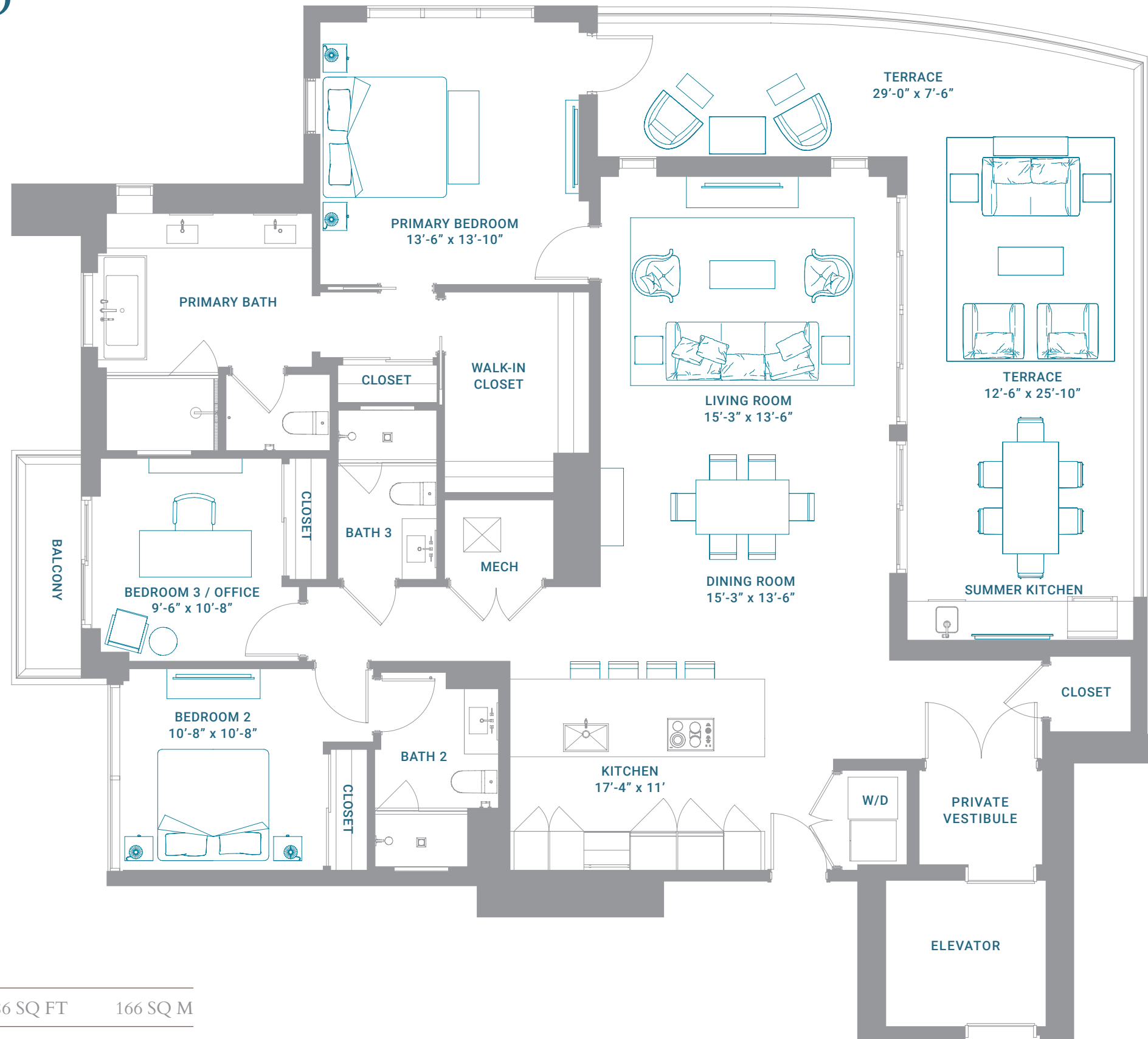
Residence D

3 BEDROOMS | 3 BATHROOMS



# RESIDENCE D

Floors 8 - 18



3 BEDROOMS | 3 BATHROOMS

INTERIOR	1,786 SQ FT	166 SQ M
TERRACE	578 SQ FT	54 SQ M
TOTAL	2,374 SQ FT	221 SQ M

