



# BAHIA MAR - MIXED USE

801 SEABREEZE BOULEVARD

OWNER:  
**RAHN BAHIA MAR, LLC**  
 1175 NE 125 STREET  
 SUITE 102  
 NORTH MIAMI, FL 33161

## ARQUITECTONICA

2900 OAK AVENUE  
 MIAMI, FL 33133  
 TEL: (305) 372-1812  
 WWW.ARQUITECTONICA.COM

CIVIL ENGINEER / LAND PLANNER:  
 FLYNN ENGINEERING SERVICES  
 241 COMMERCIAL BOULEVARD  
 LAUDERDALE-BY-THE-SEA, FL 33445  
 TEL: (954) 522-1004

STRUCTURAL ENGINEER:  
 B & J CONSULTING ENGINEERS, INC.  
 7955 NW 12TH STREET, SUITE 418  
 MIAMI, FL 33126  
 TEL: (786) 703-3833

MEP ENGINEER:  
 MG ENGINEERING  
 300 SOUTH PARK ROAD, SUITE 140  
 HOLLYWOOD, FL 33021  
 TEL: (305) 755-3833

LANDSCAPE ARCHITECT:  
 EDSA  
 1512 EAST BROWARD BOULEVARD  
 SUITE 110  
 FORT LAUDERDALE, FL 33301  
 TEL: (954) 524-3330

SEAL/SIGNATURE/DATE:

50% DD PROGRESS SET

11/04/2024

ISSUE #	DESCRIPTION	DATE
---------	-------------	------

PROJECT NUMBER:  
 1001.010858

ALL DESIGNS INDICATED IN THESE DRAWINGS ARE THE PROPERTY OF ARQUITECTONICA INTERNATIONAL CORP. ALL COPYRIGHTS RESERVED 2024. NO COPIES, TRANSMISSIONS, REPRODUCTIONS OR ELECTRONIC MANIPULATION OF ANY PORTION OF THESE DRAWINGS IN WHOLE OR IN PART ARE TO BE MADE WITHOUT THE EXPRESS WRITTEN PERMISSION OF ARQUITECTONICA INTERNATIONAL CORP

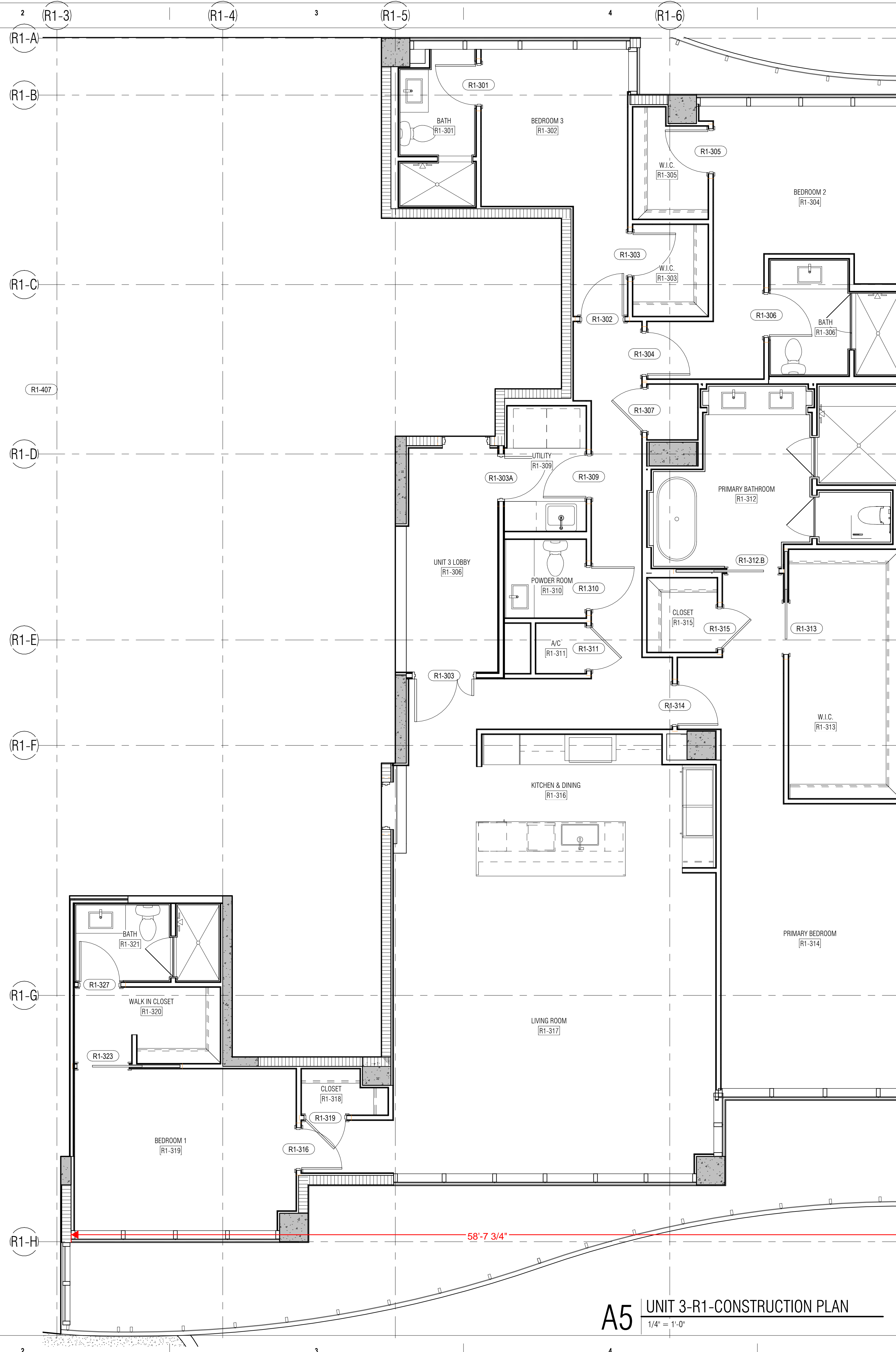
DRAWING NAME:

R1-UNIT 3 PLANS

# A-748

©2024 ARQUITECTONICA INTERNATIONAL, Inc  
 Office Registration # AA 0008779

SCALE: 1/4" = 1'-0"



**A5** UNIT 3-R1-CONSTRUCTION PLAN  
 1/4" = 1'-0"



# BAHIA MAR - MIXED USE

801 SEABREEZE BOULEVARD

OWNER:  
**RAHN BAHIA MAR, LLC**  
 1175 NE 125 STREET  
 SUITE 102  
 NORTH MIAMI, FL 33161

## ARQUITECTONICA

2900 OAK AVENUE  
 MIAMI, FL 33133  
 TEL: (305) 372-1812  
 WWW.ARQUITECTONICA.COM

CIVIL ENGINEER / LAND PLANNER:  
**FLYNN ENGINEERING SERVICES**  
 241 COMMERCIAL BOULEVARD  
 LAUDERDALE-BY-THE-SEA, FL 33445  
 TEL: (954) 522-1004

STRUCTURAL ENGINEER:  
**B & J CONSULTING ENGINEERS, INC.**  
 7955 NW 12TH STREET, SUITE 418  
 MIAMI, FL 33126  
 TEL: (786) 703-3833

MEP ENGINEER:  
**MG ENGINEERING**  
 300 SOUTH PARK ROAD, SUITE 140  
 HOLLYWOOD, FL 33021  
 TEL: (305) 755-3833

LANDSCAPE ARCHITECT:  
**EDSA**  
 1512 EAST BROWARD BOULEVARD  
 SUITE 110  
 FORT LAUDERDALE, FL 33301  
 TEL: (954) 524-3330

SEAL/SIGNATURE/DATE:

50% DD PROGRESS SET

11/04/2024

ISSUE #	DESCRIPTION	DATE
---------	-------------	------

PROJECT NUMBER:  
 1001.010858

ALL DESIGNS INDICATED IN THESE DRAWINGS ARE THE PROPERTY OF ARQUITECTONICA INTERNATIONAL CORP. ALL COPYRIGHTS RESERVED 2024. NO COPIES, TRANSMISSIONS, REPRODUCTIONS OR ELECTRONIC MANIPULATION OF ANY PORTION OF THESE DRAWINGS IN WHOLE OR IN PART ARE TO BE MADE WITHOUT THE EXPRESS WRITTEN PERMISSION OF ARQUITECTONICA INTERNATIONAL CORP

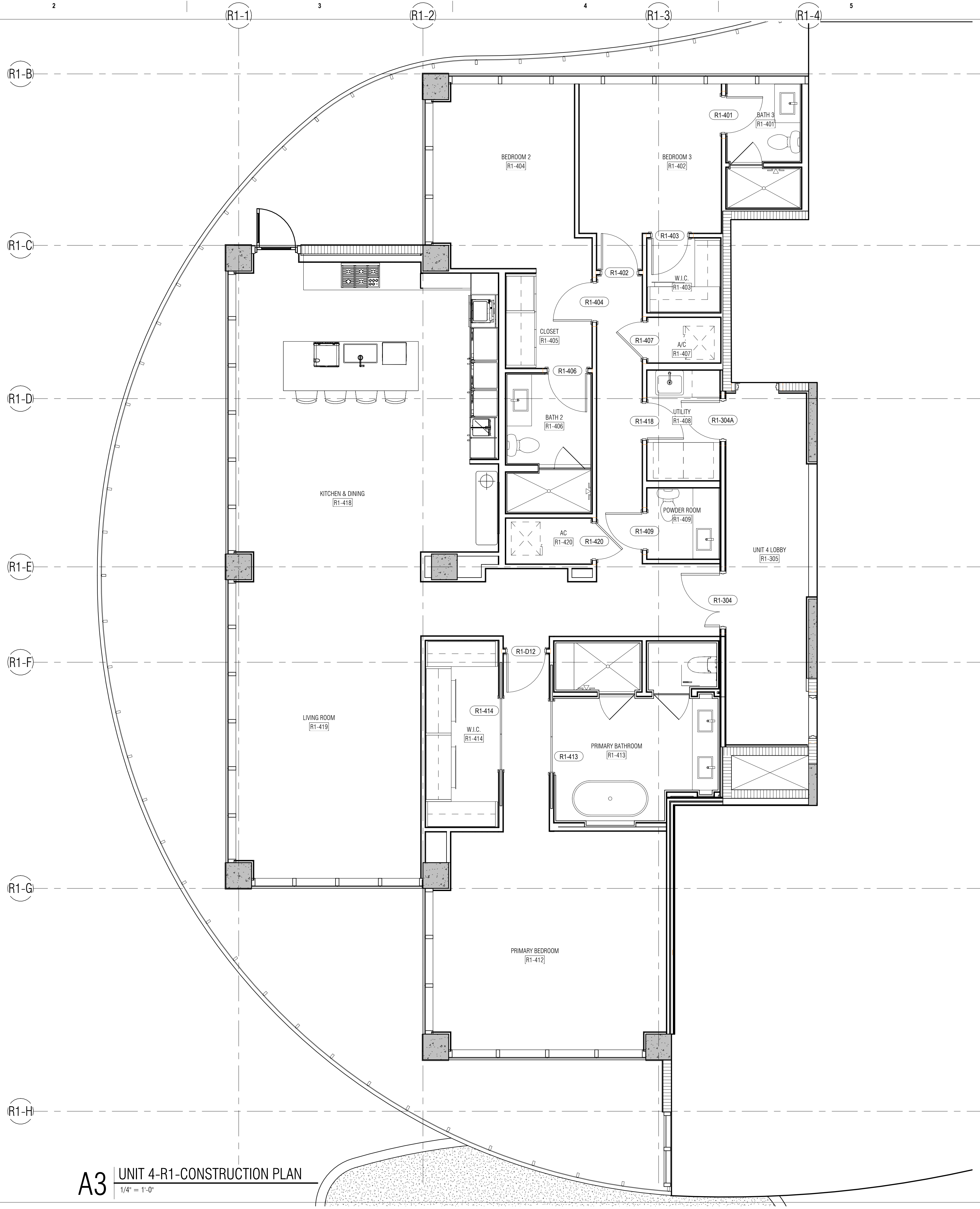
DRAWING NAME:

R1-UNIT 4 PLANS

# A-749

©2024 ARQUITECTONICA INTERNATIONAL, Inc  
 Office Registration # AA 0008779

SCALE: 1/4" = 1'-0"



**A3** UNIT 4-R1-CONSTRUCTION PLAN  
 1/4" = 1'-0"