

COLETTE

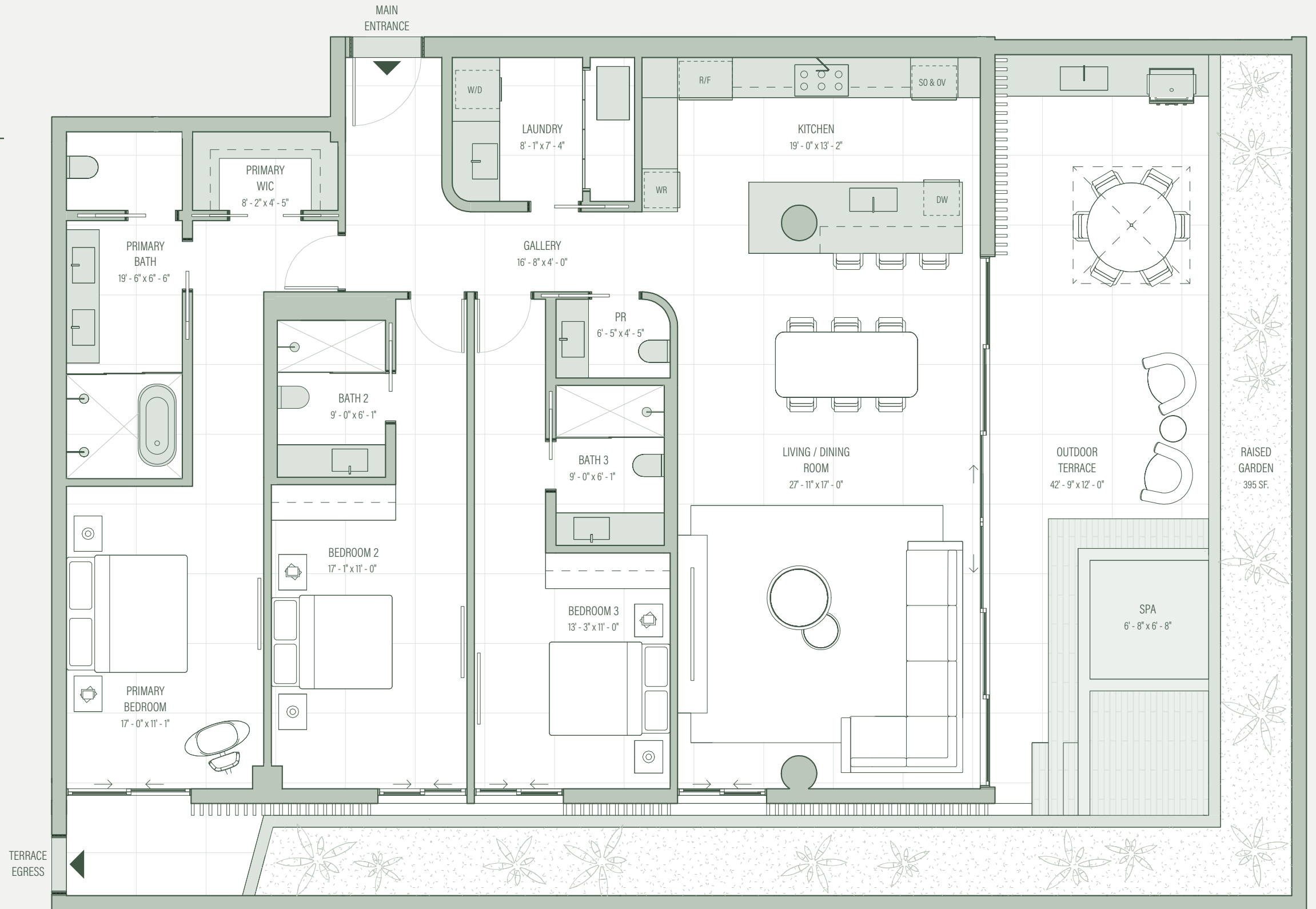
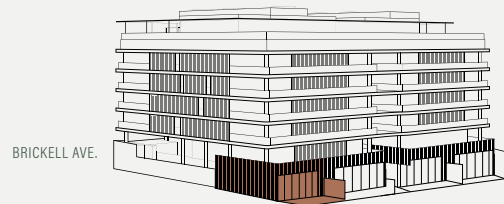
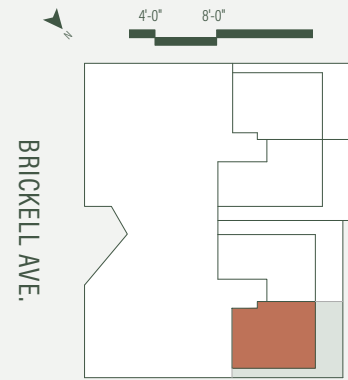
RESIDENCES

THE GARDEN RESIDENCES

Ground Level
Residence 8
3 Bedrooms | 3 Bathrooms | 1 Powder Room

Interior: 2,167 SF / 201 SM
Exterior: 1,164 SF / 108 SM
Total: 3,331 SF / 309 SM

 Delivery provided by the developer



lifeatcolette.com. 305.376.7522. 1880 Brickell Ave, Miami, Florida 33129.

 metadevelopment

Exclusive Sales and Marketing Partner
 Douglas Elliman
Development Marketing

EKLUND GOMES
THE EKLUND GOMES TEAM AT DOUGLAS ELLIMAN REAL ESTATE

There are various recognized methods for calculating the square footage of a Unit. The square footage and dimensions stated hereon are measured to the exterior boundaries of the exterior walls and the centerline of interior demising walls and in fact vary from the dimensions that would be determined by using the description and definition of the "Unit" set forth in the Declaration (which generally only includes the interior airspace between the perimeter walls and excludes interior structural components). For your reference, the area of the Unit, determined in accordance with those defined unit boundaries, is set forth in the Declaration. Note that measurements of rooms set forth on this floor plan are generally taken at the greatest points of each given room (as if the room were a perfect rectangle), without regard for any cutouts. Accordingly, the area of the actual room will typically be smaller than the product obtained by multiplying the stated length times width. The dimensions and square footage stated for this Unit floor plan are approximate and may vary with actual construction, and all floor plans and development plans are subject to change. All depictions of furnishings, appliances, built-ins, counters, soffits, floor coverings, lighting and other matters of detail, including, without limitation, items of finish and decoration, are conceptual only and are not necessarily included in each Unit. Consult the Developer's prospectus for information on what is offered with the Unit. 