



JEAN-GEORGES



MIAMI TROPIC

ART · DESIGN · FRIENDS
FOOD · CULTURE

RESIDENCES



TASTE IS
EVERYTHING



Miami Meets Here







In Miami's tropical paradise, a residential retreat takes root. At this groundbreaking address, the legendary Jean-Georges expands his mastery of culinary experiences into the realm of residential lifestyle and luxury.

Miami Tropic emerges in an enviable position in the Design District at the epicenter of fashion, art, architecture, retail, and dining. The stunning new tower is a gateway to the community and a destination all its own, where a decadent feast of world-class amenities unfolds on every floor.

At Miami Tropic, taste is everything.

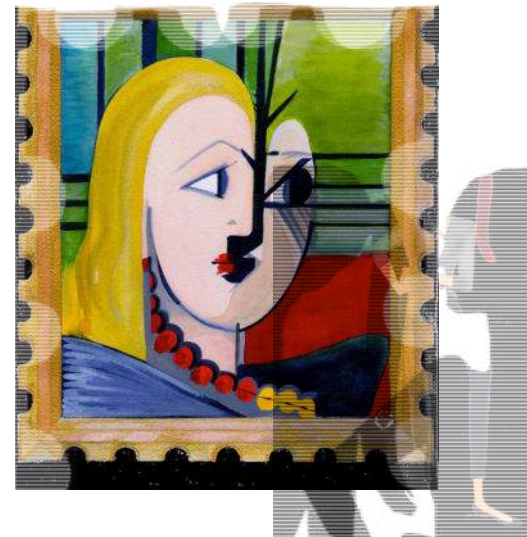


At a Glance

This is a residence like no other in Miami;
at the vibrant heart of community and culture.

Epicenter of Culture

The museums, galleries, and plentiful public art in the Design District are mere blocks away.



Refined Residences

Magnificently designed interiors by Yabu Pushelberg reflect the lushly landscape outdoors, with spacious layouts and harmonious color palettes.

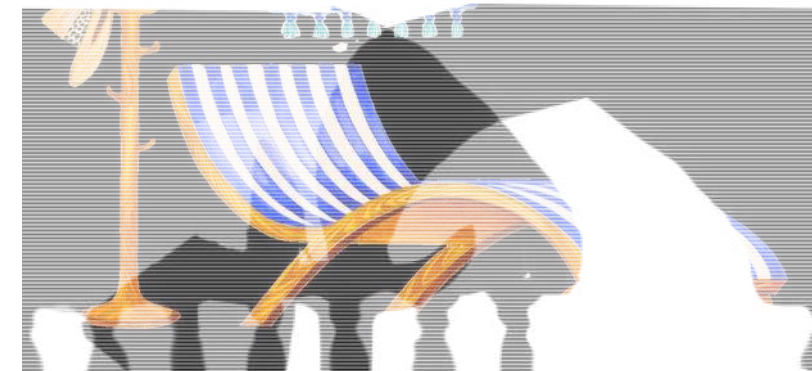
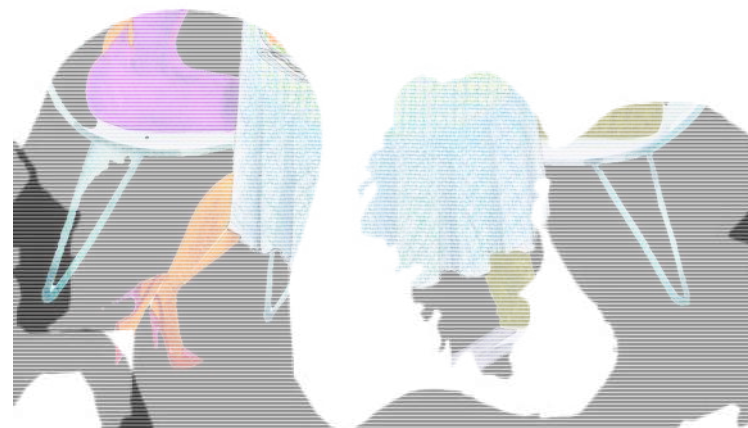
Incredible Views

From two rooftop levels, experience cinematic views of downtown Miami and Biscayne Bay.



Dining by Jean-Georges

On the ground floor, a tropical restaurant and café inspired by local flavors buzzes from day to night.



Finest Amenities & Services

Residents have free reign at the rooftop pool, gorgeous courtyard, fitness room, and spa — just a few of the building's many amenities.

A Place to Belong

From inside to out, Miami Tropic's architecture and design form a strong connection between the building and the people who live there.

GROUND FLOOR

Retail & Dining

Curated retail and gourmet food and beverage program by Jean-Georges, including a fine-dining restaurant and an all-day café.

LEVEL 2

Arrival

Private drive-up porte-cochère with dedicated valet, seamless drop-off at reception, concierge desk and mailroom.

LEVEL 5

Coworking & Entertainment

Generous coworking area with podcast studio space, private dining room and chef's kitchen, residents' lounge, and multi-function room.

LEVEL 7

Fitness & Spa

Indoor and outdoor fitness center with treatment rooms, saunas, plunge pools, squash court, yoga studio, juice bar, and more.

LEVEL 8

Pool & Restaurant

Resort-style pool with private cabanas, gardens, kids' pool, outdoor theater, kitchen, lounge, and indoor restaurant by Jean-Georges.

LEVELS 9-47

Residences

Luxury residences with multiple layouts, floor-to-ceiling windows, sweeping views, kitchens inspired by Jean-Georges, and spacious balconies.

LEVEL 48

Penthouse

Penthouse with spectacular views, private elevator, and premium finishes.

LEVEL 49

Rooftop Skydeck

Pool with panoramic city views, courtyards, bar, private dining room, and catering pantry.

Rooftop Pool Deck Level 49

Penthouse Level 48

Residences Levels 9 - 47

Pool & Restaurant Level 8

Fitness & Spa Level 7

Co-working & Entertainment Level 5

Arrival & Main Lobby Level 2

Retail & Dining Ground Floor





New Horizon

An open mind and insatiable curiosity has kept Jean-Georges in constant search of what's next, and what could be. In 2022 he revitalized the iconic Tin Building, transforming it into a food hall and culinary destination.



Behind the Curtain

Inside House of the Red Pearl, a speakeasy inside the Tin Building by Jean-Georges in New York.





abc kitchen

Renowned for its stunning interiors and fresh, seasonal menu, this restaurant delivers a dining experience that is both visually striking and exceptionally flavorful.

No matter the cuisine, Jean-Georges is known for his unwavering commitment to fresh, seasonal ingredients and artfully prepared dishes that elevate every dining experience.



In Easy Reach

From Miami Tropic's strategic location, all the best parts of Miami are almost instantly accessible.



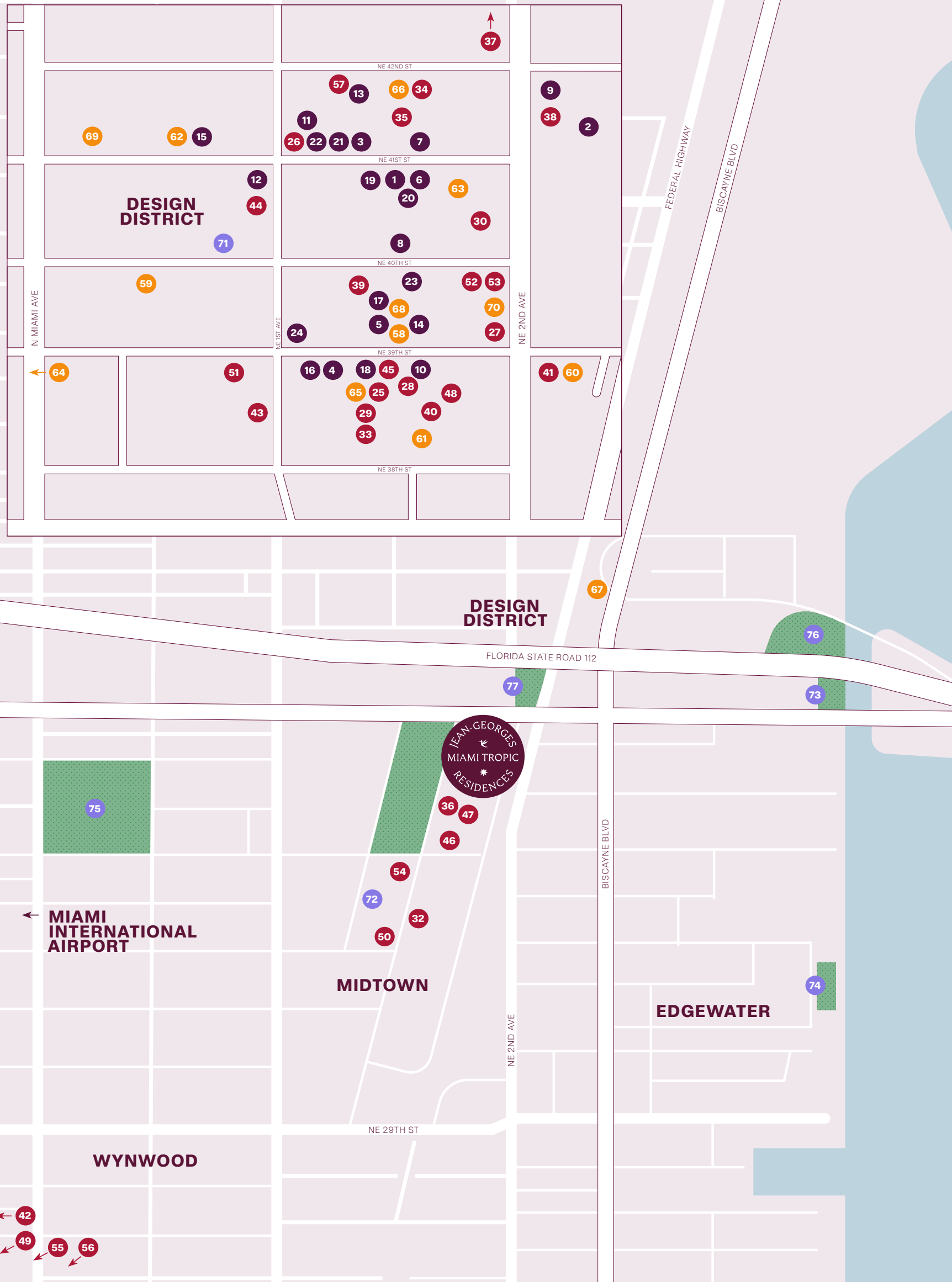
Jade Alley

Architect Daniel Toole's Jade Alley is one of the Design District's longstanding works of interactive public art.



A Natural Sense of Connection

A universe unto itself, the Design District is concentrated with high-end shopping interwoven with restaurants, galleries, and parks all within walking distance of Miami Tropic.



RETAIL

1. Alexander McQueen
2. B&B Italia
3. Bottega Veneta
4. Burberry
5. Cartier
6. Celine
7. Chanel
8. Christian Louboutin
9. Design Within Reach
10. Dior
11. Dion Lee
12. Golden Goose
13. Gucci
14. Hermès
15. Kith
16. Loewe
17. Loro Piana
18. Louis Vuitton
19. Maison Margiela
20. Prada
21. Rick Owens
22. Stone Island
23. Tiffany & Co
24. Tom Ford

FOOD & DRINK

25. Baccarat Bar & Lounge
26. Contessa
27. Cote Miami
28. Dior Café
29. Ella
30. Elastika at The Moore
31. Ghee
32. Itamae AO
33. Ladurée
34. L'atelier De Joël Robuchon
35. Le Jardinier
36. Little Hen
37. Mandolin Aegean Bistro
38. MC Kitchen
39. Michael's Genuine
40. Mia Market Foodhall
41. Mother Wolf
42. Pastis
43. Pura Vida
44. Rosetta Bakery
45. Saint Roch Market
46. Salvaje Miami
47. Salumeria 104
48. Sofia
49. Sparrow
50. Sugarcane Raw Bar
51. Swan
52. TABLE by Antonio Bachour
53. Tacombi
54. Tap 42 Kitchen & Bar
55. Uchi
56. Zak the Baker
57. ZZ's Club

ART & LANDMARKS

58. Conscious Actions
59. Dalé Zine
60. David Rosen Galleries
61. Fly's Eye Dome
62. ICA Miami
63. Jade Alley
64. Locust Projects
65. Netscape
66. Opera Gallery
67. Sol Lewitt Garden
68. Support System
69. The de la Cruz Collection of Contemporary Art
70. The Office

PARKS & RECREATION

71. Design District Dog Park
72. M Park
73. Martell Park
74. Paraiso Park
75. Roberto Clemente Park
76. Stearns Park
77. Woodson Mini Park



ICA Miami

The Institute of Contemporary Art in Miami is always free, open to the public, and full of thought-provoking contemporary works.



Striking Exteriors

Shopping can almost feel more like gallery hopping because each boutique is so architecturally unique. The Gucci flagship that captivates with its striking bronze and stone façade.

Gallery Hop

The streets are dotted with independent art galleries and studios with unmissable exhibitions.



Time to Live Larger





Sky

The Residences
Informed by the Tropical Sky

L8 – Restaurant, Pool, Kids & Teens
Informed by the Forest Canopy



L7 – Fitness & Spa
L5 – Co-working & Entertainment
Informed by the Forest Flora

L2 – Arrival Lobby
L1 – Street Level Lobby
Informed by the Earth

Earth

BUILDING SCHEME

From Earth to Sky

The design of Miami Tropic flows from the ground up, inspired by the natural evolution of a tropical landscape as it reaches higher and higher into the atmosphere.

Miami-based CLAD landscape architects and renowned design studio Yabu Pushelberg collaborated on a cohesive vision for Miami Tropic that imagines a residence informed by a lively and lush tropical environment. The lower floors are grounded with deep earth tones informed by the forest floor, while the color palettes and plants lighten and awaken as the building ascends to an otherworldly rooftop inspired by the forest canopy.

It's rare to encounter microclimates, a grove of trees, and secret gardens in a tower 49 stories high — but not here. Organic, natural materials and sustainable practices bring this unique vision to life in a residence that feels utterly transportive, a testament to the delicate balance between reality and dreams.

Continual Terraces

The terrace overhangs have a sustainable purpose, protecting the building from sun and lowering its energy use



AT HOME

Residences

Focusing on light, openness, and spatial design, Yabu Pushelberg's interior design reflects Miami's unique ability to cultivate spaces that are both tranquil and lively.

In the midst of a busy urban center, the interiors of the residences at Miami Tropic offer a place of escapism. Tranquility. A sense of luxurious retreat. The residences, which begin on the 9th floor, are informed by the tropical sky, with wide, floor-to-ceiling windows that let natural light dapple through each room. "Miami residents are sophisticated yet fun and spontaneous," said the designers. "Our design infuses commissioned art, embraces deep luxuries, and plays with color and materials. We aimed to evolve the idea of what a residence in Miami can mean. Luxury, often associated with stiffness and grandeur, doesn't have to be separate from joy and playfulness."

Above the Treeline

Select residences overlook the Miami cityscape and into the Florida Everglades beyond.



Blue Views

Here, sky melts into sea. A view from a residence with a terrace facing Biscayne Bay, just moments away from Miami Tropic.



Indoor-Outdoor Harmony

Continuous balconies allow for a flow from indoors to out from nearly every living space.



A KITCHEN VETTED BY JEAN-GEORGES

Jean-Georges worked hand-in-hand with Yabu Pushelberg to refine the kitchen layout design, appliance and fixture selections, storage solutions, and island configuration. The space was intentionally crafted to be both functional and compelling. The islands received special focus, serving as a culinary and entertaining center stage.



*ARTIST'S CONCEPTUAL RENDERING. SEE DISCLAIMER PAGE.

Appliances fit for a world-class restaurant kitchen

STOVES

Electric induction stovetops allow for energy-efficient cooking without harmful emissions — plus easy clean-up.

OVEN

Handleless Gaggenau wall ovens open by touch, with intuitive controls and understated knobs.

REFRIGERATORS

Gaggenau stainless steel fridges with a professional freshness system are fully integrated into the wood cabinetry.

LIGHTING

Subtle recessed lighting above the island and backsplash cast the kitchens in a warm, well-lit glow.

SINKS

Deep set sinks designed to fit large pots and pans, with sleek faucets by Gessi.

STORAGE

The kitchen design maximizes storage, with ceiling-height cabinetry and island drawers and storage.

The Dawn Kitchen

Creamy beige stone islands with thin veining bring lightness to Dawn palette kitchens.



*ARTIST'S CONCEPTUAL RENDERING. SEE DISCLAIMER PAGE.

DAWN SCHEME

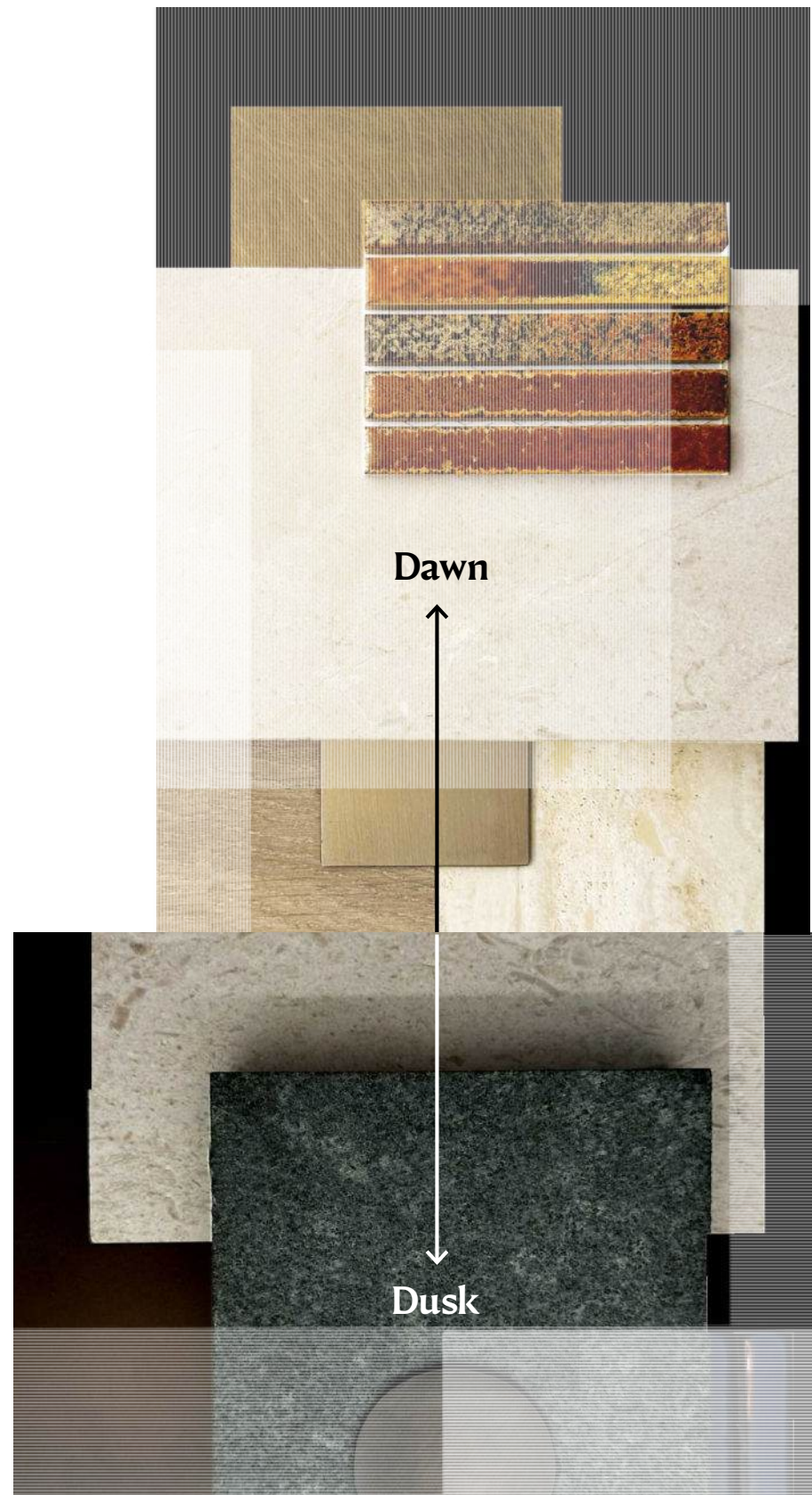
Backsplash
Orange-brown mixed ceramic tile

Countertops
Caesarstone Primardia

Fixtures
Gessi brushed nickel

Cabinetry
Italian woodwork with Beachwood finish

Flooring
Limestone



DUSK SCHEME

Flooring
Limestone

Countertops
Green Diabaz

Cabinetry
Italian woodwork with dark wood finish

Fixture
Gessi gunmetal

Backsplash
Dark blue mixed ceramic

FROM DAWN TO DUSK

Layouts and functionality remain the same, but the contrast in Dawn and Dusk palette kitchen designs is a difference in backsplash, countertops, wood tones, and finishes. Ceramic backsplashes with varied tones create a warm, hearth-like feel in Dawn and a cool intimacy in Dusk.



Solar Glow

A sunrise-inspired palette gives Dawn kitchens an optimistic ambiance with a hint of spice.



Moody Blues

When light hits the blue backsplash in Dusk, the kitchen takes on the allure of a moonlit swim.

Rosy Dawn

Saturated clay-rose tile envelopes the primary bathrooms in the Dawn palette.



BATHROOMS

The bathroom design in both palettes pairs modern vertical tilework with floating cabinetry, massive bathtubs, and black metal accents for a magnificent and moody, spa-like atmosphere.

DAWN SCHEME



DUSK SCHEME



HARDWARE

FAUCETS

Black metal faucets by Gessi have a smooth, seamless design in tune with the black countertops.

SHOWERS

Tile-clad showers with frosted glass doors create an oasis for self-care.

TUBS

Generous soaking tubs with ample ledges are available in materials that vary per unit.

LIGHTING

Strategic lighting with variable brightness can dim depending on the need.

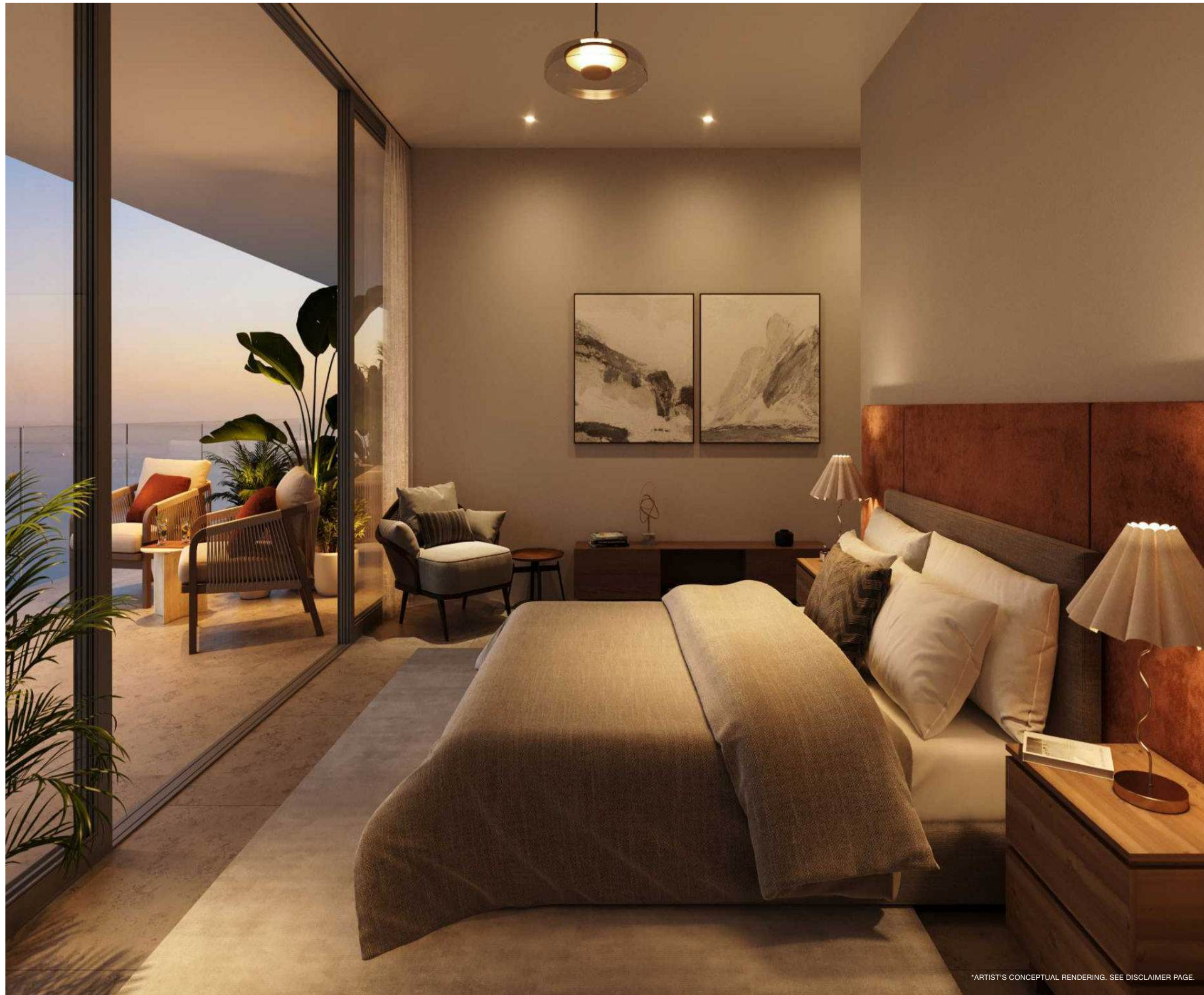
VANITIES

Sizable vanities with oversized mirrors take cues from luxury hotels.

A Serene Glow

Bathrooms are outfitted with soft, warm lighting reminiscent of a spa setting.





WIND DOWN

With an eye toward the intersection of joy and sophistication, bedroom interiors can shift from lively to tranquil spaces as the sun makes its descent. In every room, residents experience intently curated interior design that follows the light, with an open, spatial awareness that allows life to feel as unhindered as the fresh air that passes through the open terrace door.

Look Up

Ceiling heights reach 10 to 11 feet high, amplifying the drama of the uninterrupted views.

The Art of Living Well



Earthly Wonders

The entrance to the coworking space and gardens on Level 5.



LIVING WELL

Amenities & Services

The amenities programming at Miami Tropic provides residents with essentials that feel like escapes — and escapes that become essentials.

A thoughtfully curated and diverse selection of world-class amenities flows from the lobby to rooftop, designed to seamlessly fold into every aspect of residents' lifestyles. The indoor-to-outdoor fitness area, resplendent with landscaping, resembles a tropical spa retreat. Co-working spaces don't just offer space to efficiently work, but spark creativity and collaboration. The expansive rooftop pool deck feels as meandering as Central Park, with private cabanas that prove difficult to leave. Interior courtyards with thriving trees unite shared areas flushed with natural light, nourishing a sense of community. Spaces for entertainment, from an outdoor amphitheater to squash courts, game rooms, art gallery, and private lounges, provide countless ways to host, unwind, and recharge. A connective focus on joyful living and wellbeing run through each amenity space, with interior design full of unexpected details and richly diverse landscaping that's always in bloom.



A Tropical Entry

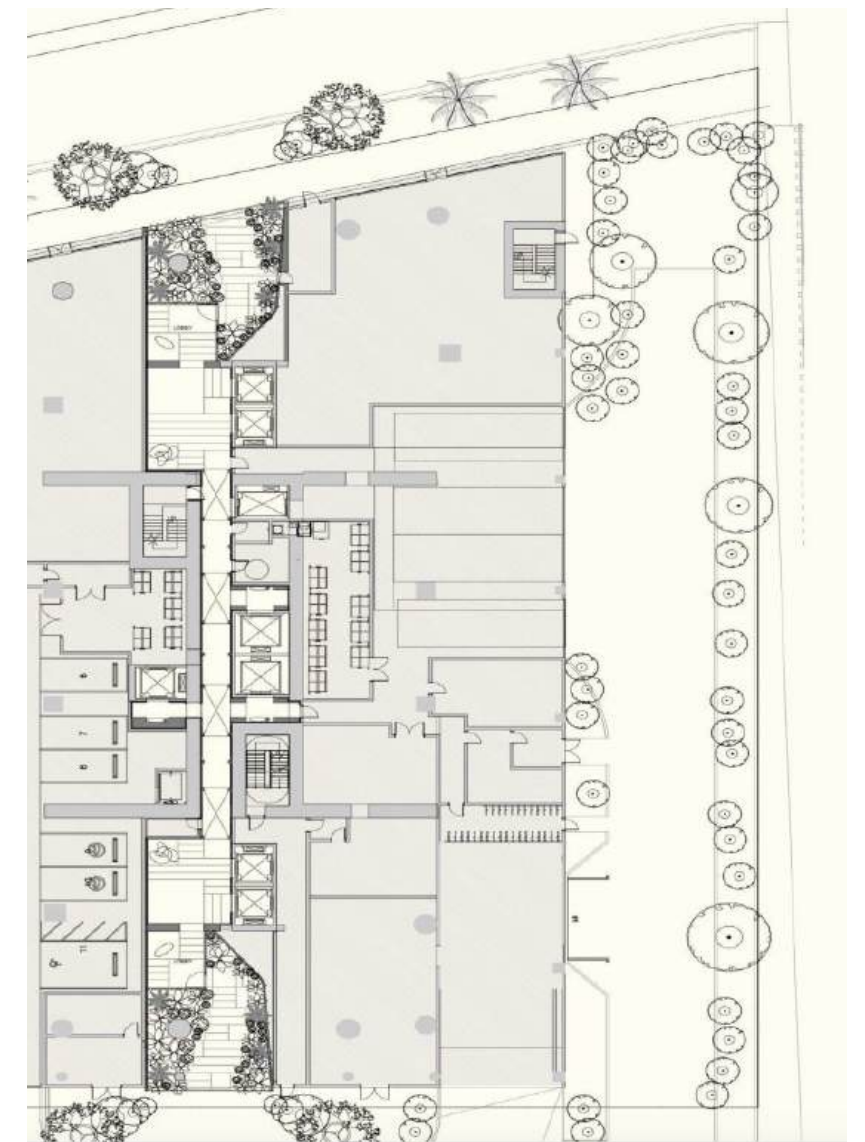
Leafy ferns and palm plants line the entrance to Miami Tropic, setting the tone for what awaits inside.

*ARTIST'S CONCEPTUAL RENDERING. SEE DISCLAIMER PAGE.

LEVEL 1

Ground Floor

The landscape architecture designed by CLAD for Miami Tropic goes far beyond what typical residential greenery entails, nearly recreating a tropical rainforest on a concrete city block. It begins at the moment of arrival at the building's dual entrances, where feathery ferns and glossy palms line the staircase, like winding through the forest floor.



LEVEL 2

Lobby

Residents pass by a babbling water feature as they make their way to the lobby, where they're greeted by a 24-hour concierge & valet and can check mail and receive packages from secure storage. The lobby leads to private or semi-private elevator vestibules for all residences, setting an environment that balances the seclusion of home with the energy of community.





*ARTIST'S CONCEPTUAL RENDERING. SEE DISCLAIMER PAGE.

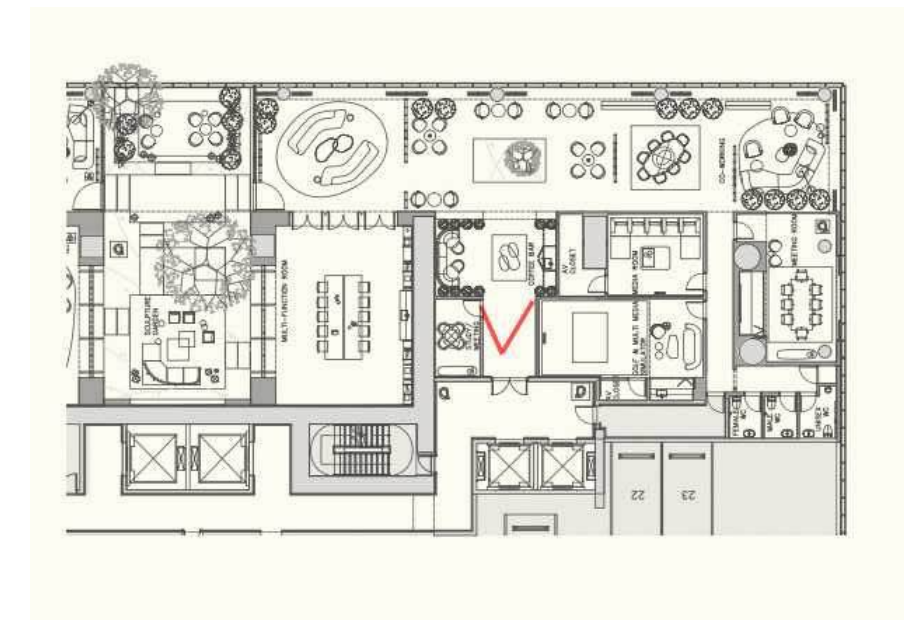
LEVEL 5

Coworking

Expansive coworking areas in Miami Tropic offer flexible ways to work in an environment that feels more like a luxurious, comfortable restaurant than an office. The space opens into a large courtyard to take calls, breaks, and find inspiration in nature. Residents can use a large conference room, a podcast studio, art gallery, and a multi-function room for presentations or screenings.

Office Hours

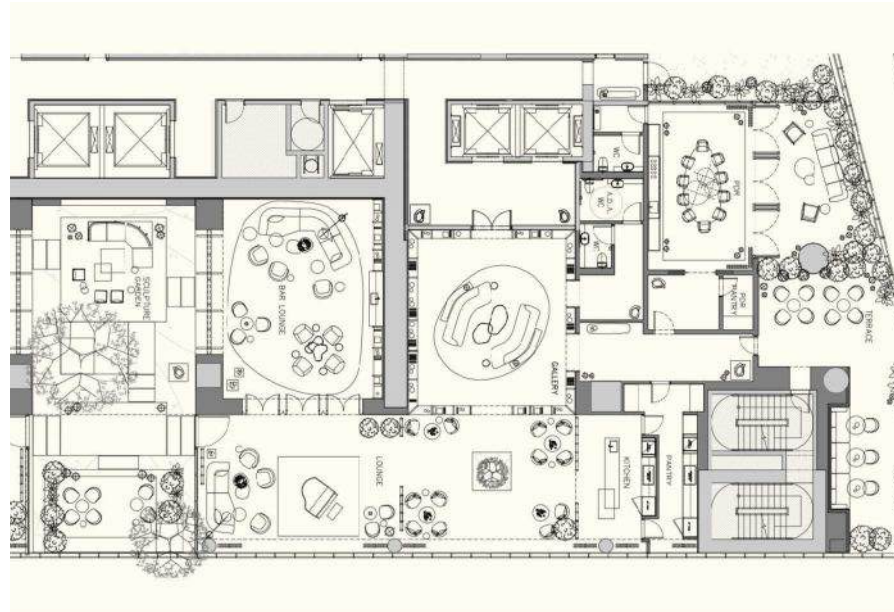
The co-working area includes a much-needed feature: a coffee bar.



LEVEL 5

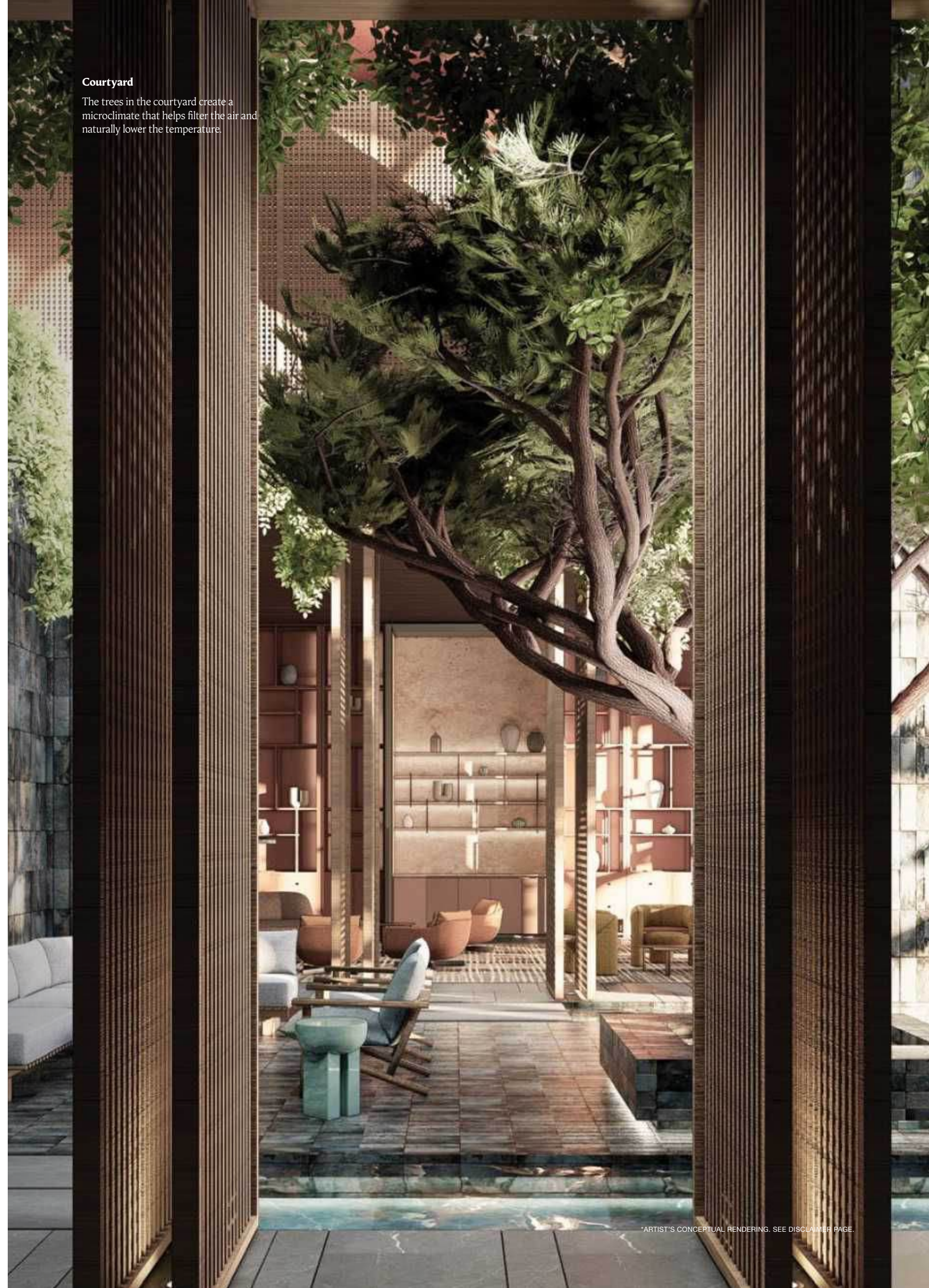
Lounge

A beautiful interior courtyard and Sculpture Garden leads to a residents' lounge, fostering a natural connection between sunlit communal spaces. Varied seating areas in plush, luxe fabrics invite residents to stop by with a magazine, or gather with friends and stay awhile. Wispy grasses and lush greenwalls make it too easy to forget you're in fact, indoors.



Courtyard

The trees in the courtyard create a microclimate that helps filter the air and naturally lower the temperature.



Private Dining Room

A spacious private dining room connects to a catering pantry and a beautifully furnished terrace for indoor-to-outdoor entertaining.



LEVEL 7

Fitness

The main fitness studio is professionally equipped with separate areas for cardio equipment, free weights and machines, ample space for stretching, and a yoga/barre studio. It extends into an outdoor training area and lounge for more areas to exercise, do yoga, or cool down. A healing garden on the 7th floor promotes relaxation with aromatic gardenias and lavender, and the swish of bamboo cane in the breeze.



Match Point
The fitness level includes a squash court, ping pong room, and towel service.

A Fitness Haven

The main fitness studio provides a diverse workout experience with dedicated areas for cardio, free weights, and a yoga/barre studio, extending into an outdoor training area and lounge.



Cardio Atrium

The cardio equipment looks out onto the cityscape from 7 stories up.



Squash Court

A squash court fit for singles or doubles offers residents a place to work on their backhand in crisp air-conditioning.



Home Stretch

The yoga room has a calming fern green and tropical coral palette, with serene, elegant lighting.



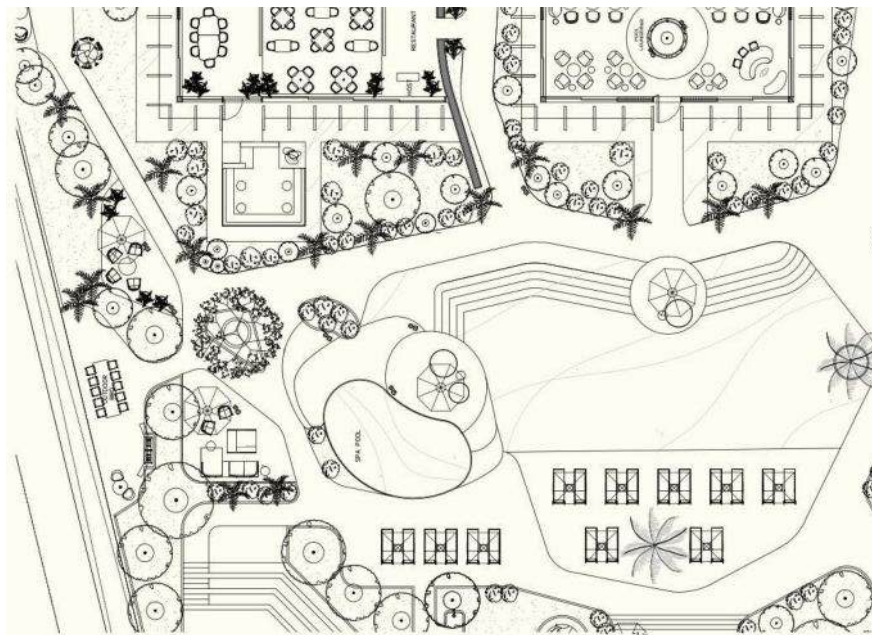
LEVEL 8

Pool

An immersive tropical paradise extends across the 8th floor, where the pool is surrounded by palms, coastal trees, and flowering vines that make the deck cool and comfortable. In the evenings, the pool faces a stunning view of the sunset. There are 75 seats for residents to lounge, an amphitheater for outdoor movie screenings, a children's pool, picnic and play areas, and private cabanas.

8th Floor Activations

This level also contains kids' game rooms and lounges, a bar area, and changing rooms.



Hibiscus Meets Horizon

Deep hibiscus tones and textured walls in the hallway give way to sprawling bay views.



Orchid Opulence

On level 49, deep purple tones and panoramic views set the stage for a refined lounge experience.



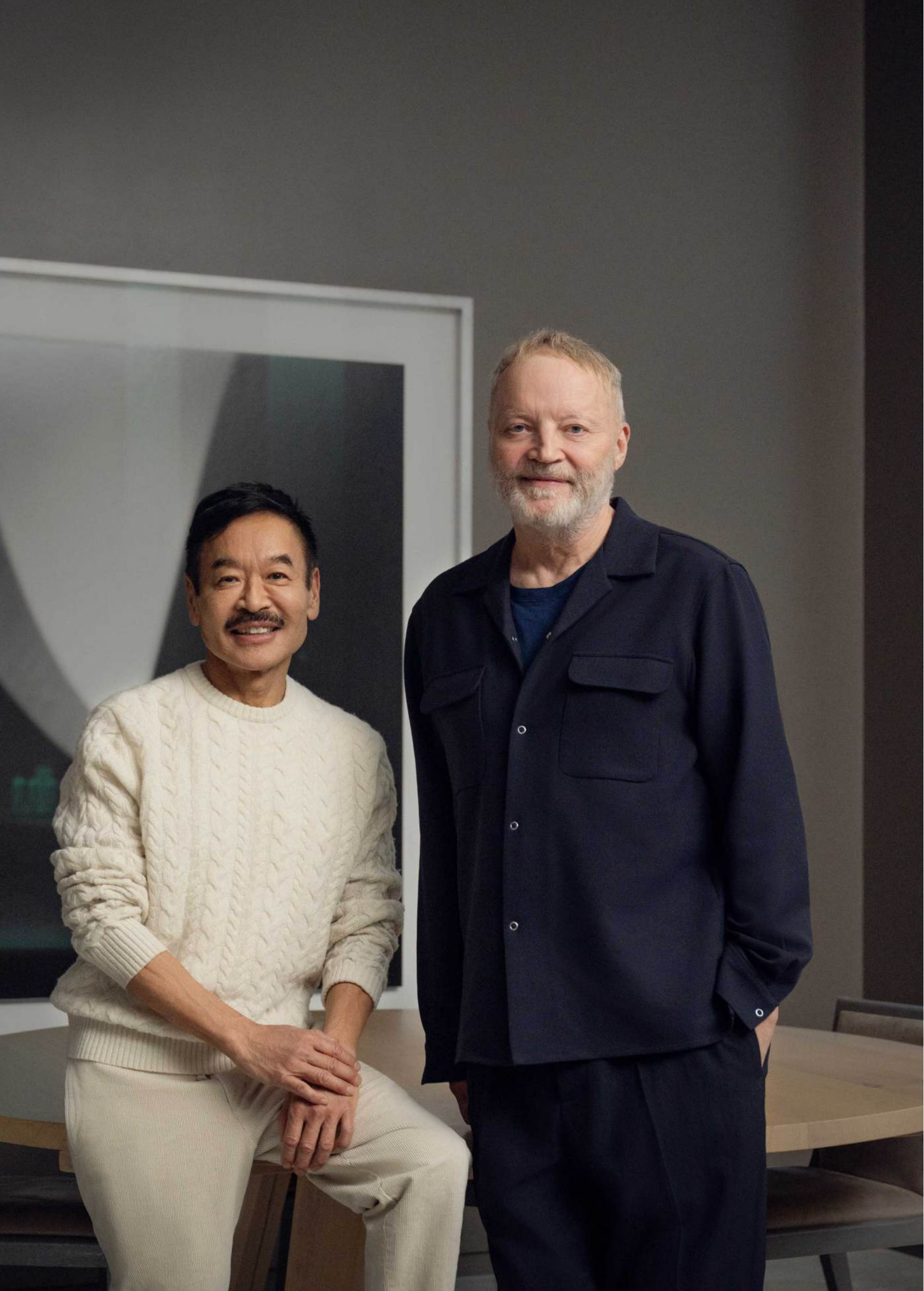
A Lounge with a View

The top floor (level 49) boasts several adaptive lounge spaces that set the tone whether you're seeking a quiet retreat, a productive workspace, or a spot to connect with friends.



Sunset Lounge

A jewel-toned bar and lounge on the 49th floor is staffed on weekends and available for special events.



Yabu Pushelberg

The transportive interior design of Miami Tropic is the masterful vision of an international studio with a simple mission: It's all about designing the world we want to live in.

George Yabu and Glenn Pushelberg formed one of the world's most influential design studios in 1980. Their goal: to create immersive environments and compelling destinations. Here at Miami Tropic, the interiors capture the essence of their setting in a vibrant palette that includes verdant greens and shimmering blues.

Tactile fabrics and cool natural stone promote a sense of calm throughout each residence, with the occasional bold, playful flourish in homage to the dynamism of the Design District. Their singular vision and unceasing commitment to detail is manifested in every room. These are residences to savor from morning coffee at the breakfast bar to a soothing night cap on the terrace followed by deep, restorative sleep.

The distinctive layering of the building creates unique sightlines and open perspectives for each residence. Moving from inside to out, the far-reaching views over city and water are framed by cool white pillars and lush landscaping, forming strong connections between the building and the people who live there. This is a residence like no other in Miami; a home of character, a place to belong.



The London Edition


The design studio combined the refined English manor touches with their love of natural materials to create a futuristic slickness in this historic hotel.

“There was this raw excitement that drew us into Miami,” said the designers. “Our design for Miami Tropic speaks to joy, play, sophistication, and serenity, blending these elements seamlessly to create a unique residential experience.” Their recent projects include a fifth EDITION hotel, resort projects across Southeast Asia, Japan, and Mexico, and a collaboration with Bruno Mars on The Pinky Ring, a cocktail lounge and jazz bar at the Bellagio Las Vegas.



Centurion New York

Yabu Pushelberg designed this exquisite new space for American Express black card members.



Built to Last

The award-winning architecture firm is known for its high modernism and striking facades.

ARCHITECT

Arquitectonica

A tower floats above the palm line, built from a blueprint that began with a simple flick of a wrist, a Fibonacci spiral, a nautilus shell, unfurling up and out, turned skyward. Miami Tropic is living, breathing art by the Miami-based Arquitectonica.

Bernardo Fort-Brescia is a co-founder of Arquitectonica, an international architecture, interior design, and planning firm known for its innovative and modern designs. Fort-Brescia received his undergraduate degree in architecture from Princeton University and his master's degree from Harvard University's Graduate School of Design. Since founding Arquitectonica in Miami, Florida in 1977 with his wife, Laurinda Spear, Fort-Brescia has led the design of many of the firm's notable projects, ranging from residential and commercial buildings to large-scale master plans and urban developments.

Arquitectonica has received numerous awards and has completed projects in over 60 countries. The firm continues to push the limits of design with its innovative use of materials, geometry, patterns, and color to introduce a new brand of humanistic modern design to the world. With a commitment to excellence and creativity, Arquitectonica is reshaping urban landscapes and enhancing the way we experience our environments.



Regalia

Undulating terraces surround this Sunny Isles Beach residential tower by Arquitectonica.

Bernardo Fort-Brescia envisioned a highly designed building in tune with the neighboring Design District, with an artful eye and activated energy that blends the indoors and out. Continuous balconies, vast windows, and inner courtyards create a constant ebb and flow between environments. At Miami Tropic, you never feel “cooped up inside,” said Fort-Brescia, “we’re creating indoor-outdoor living, like life in the tropics.”

Brickell City Centre

Arquitectonica designed the master plan for Miami’s Brickell City Centre, featuring the Climate Ribbon—an elevated trellis that sustainably enhances airflow and reduces energy consumption while providing shade and shelter for pedestrians.



DEVELOPER

Terra

Inspired by the rare opportunity to build residences within the city's Design District, Terra's vision was to create a gateway between neighborhoods, a fitting landmark for this revered community.

As the CEO of Miami-based development firm Terra, David Martin has cultivated a portfolio of more than five million square feet of residential and commercial real estate valued in excess of \$8 billion. The firm is active across all major real estate asset classes, including multifamily apartments, luxury condominium and single-family residences, retail and office space, hotels, and industrial properties. Mr. Martin oversees several facets of Terra's business, including real estate development, design, construction, financing, marketing, sales, and leasing.

Relentless in his pursuit of design excellence and responsible approaches to development, since launching the firm in 2001, David has enlisted the world's top architects and planners as collaborators behind the firm's signature projects. Recent examples include Rem Koolhaas/OMA, Renzo Piano, Bjarke Ingels, Daniel Buren, Ruben and Isabel Toledo, Meyer Davis Studio, William Sofield, West 8, Chef Michael Schwartz, Rene Gonzalez, Chad Oppenheim, RDAI, Gabellini Sheppard, and more.

Under David's leadership, Terra has become a transformative force in Miami's real estate landscape, recognized for its commitment to innovative design and sustainable practices. The firm prioritizes community-focused developments that enhance urban living while promoting environmental stewardship.

David Martin

The Florida-native CEO of Terra has seen Miami's transformation through the decades — and has played a first-hand role in it.





Eighty Seven Park
 This beachfront condominium is the first residential building designed by Renzo Piano.

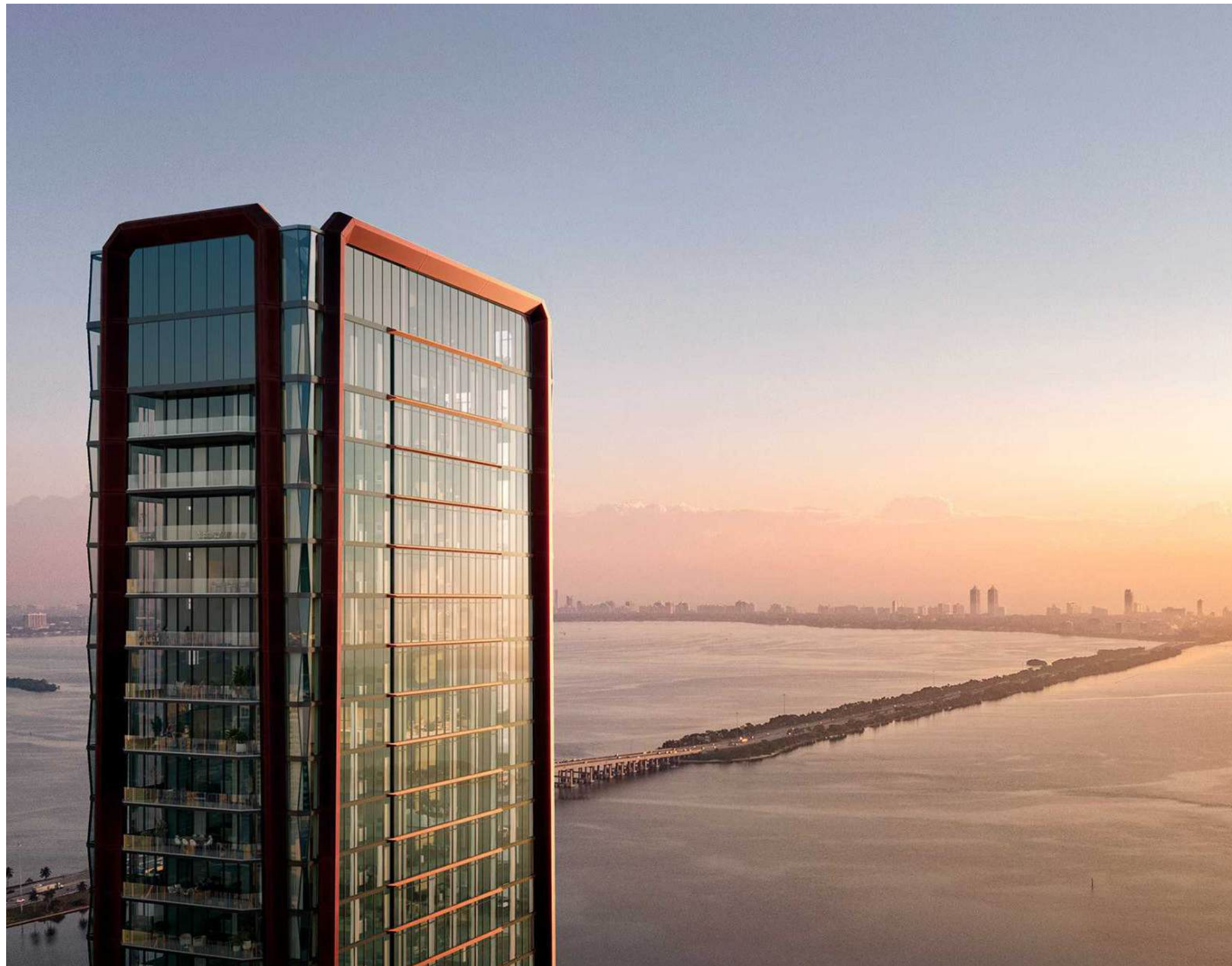
Terra's mission is to transform neighborhoods and the way we live through considered, intelligent, and unexpected design. Miami Tropic carried on that vision. "Being steps from global lifestyle and leisure, residents gain unending membership to every advantage of this eminent design and cultural community," said Terra CEO David Martin. Miami Tropic offers astounding accessibility, a walkable home base with the freedom to go to different neighborhoods and experience the best of Miami.



Park Grove
 The three iconic towers of Park Grove became catalysts for growth, economic development, and a redefinition of luxury living in Miami.

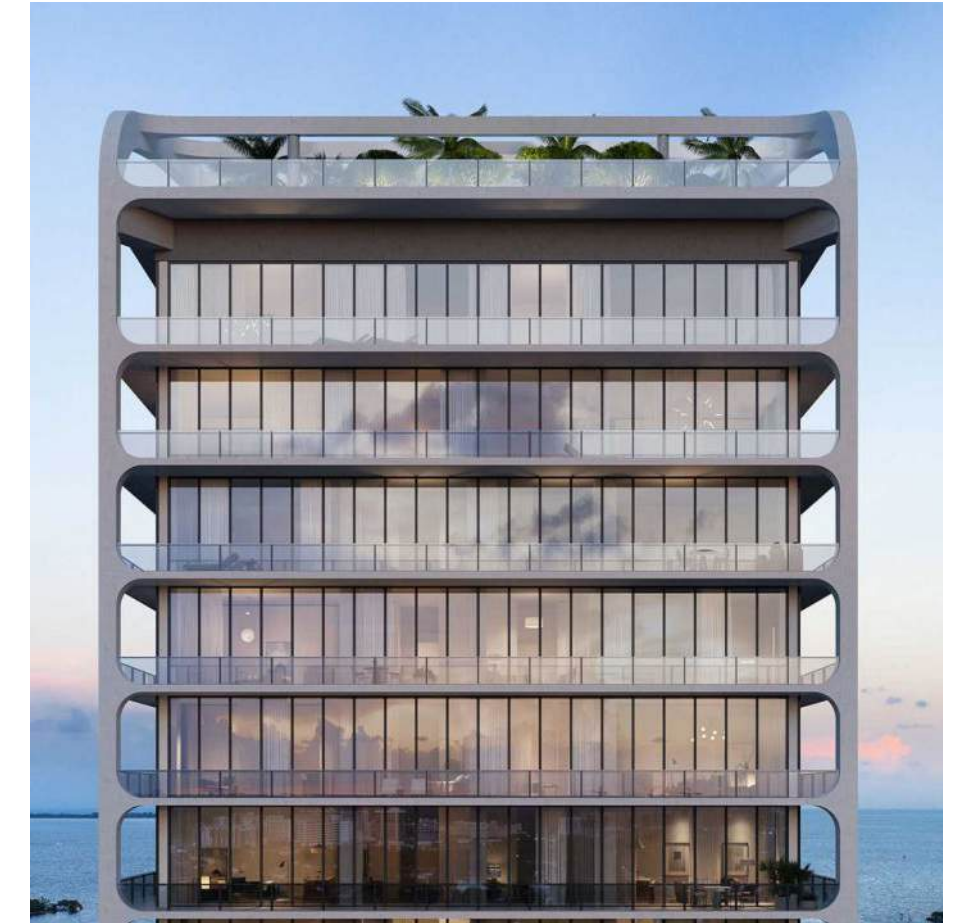
Villa Miami

This Edgewater, Miami tower is conceptualized by Major Food Group and Terra for an exclusive collection of residences that seamlessly blend culinary excellence and old-world hospitality.



Mr C Residences

The maritime-inspired Mr. C Residences bring a vibrant energy and exceptional design to the Coconut Grove neighborhood.



Five Park

A collaboration of incredible design minds, Five Park sets a new standard for living in Miami Beach.





DEVELOPER

Lion Development Group

Lion Development Group specializes in world-class development and redevelopment projects in communities centered on the intersection of technology, culture, and the arts.

As President and CEO, Michael Simkins is tirelessly dedicated to spearheading Miami's exponential growth. The Simkins family, with deep South Florida roots that span decades, is highly respected for supporting collaborative, community-focused projects that drive sustainable economic growth and bring global visibility to the region. Committed to the betterment of Miami, both the family and Simkins himself are involved in various local philanthropic initiatives, including juvenile diabetes research—a cause dear to both his wife and mother. He also serves on the boards of the Miami Jewish Federation and Miami Beach JCC, as well as the Young Presidents' Organization (YPO), fostering connections and support within the community.

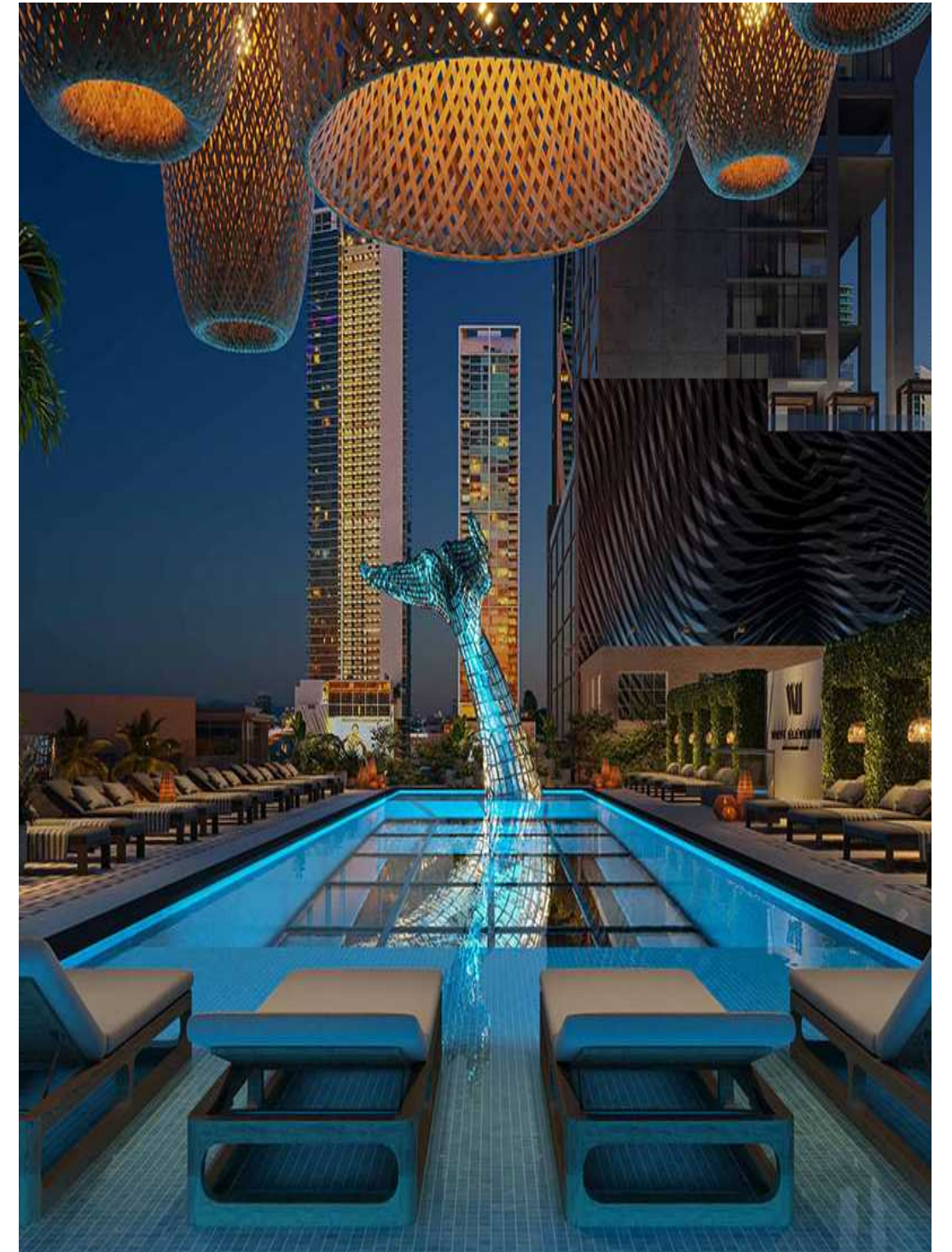
Born and raised in Miami Beach as the youngest of five children, Simkins attended Ransom Everglades and later the University of Miami, where he received a degree in finance. He obtained a law degree from Brooklyn Law School and practiced real estate law at Akerman Senterfitt until 2007, when he chose to fully dedicate himself to his passion for real estate investment and development, contributing to Miami's ongoing transformation.



ElLEVEN Hotel & Residences

A stylish collection of residences rich in amenities, situated alongside the best of Miami's nightlife

Lion Development Group, led by the passionate Michael Simkins, is all about creating exceptional spaces that enhance Miami's urban appeal. With a focus on innovation and community, Simkins envisions developments that blend residential, commercial, and cultural elements effortlessly. His dedication to thoughtful design and sustainability not only uplifts the city's aesthetic but also fosters a sense of belonging, making Miami a more vibrant and connected place to call home.



West 11th Residences

Miami living, artfully and energetically re-imagined by Lion Development Group.



LANDSCAPE ARCHITECTURE

CLAD

Carolina Monteiro founded CLAD after 15 years of practicing landscape architecture, focusing on creating harmonious outdoor spaces that beautifully intertwine architecture and nature.

Carolina Monteiro founded CLAD in 2017 after 15 years in landscape architecture and firm management in Miami. The firm specializes in creating timeless outdoor spaces, from private residences to boutique hotels, with a strong focus on personalized designs that meet each client's unique needs. CLAD emphasizes a seamless integration of architecture, landscape, and the environment, using a controlled material palette to produce calming and sophisticated gardens. The firm prioritizes detail, considering plant textures, layered volumes, focal points, and elements of surprise in its designs, while also ensuring functionality and easy maintenance to enhance clients' outdoor experiences.

Raised by an architect father and a landscape architect mother, Carolina's upbringing fostered her passion for design. She was trained as an architect in São Paulo, Brazil, before moving to Europe to further her career. After relocating to the USA, she completed her Master's in Landscape Architecture and led a prominent landscape architecture firm until founding CLAD. Since its inception, CLAD has designed over 200 gardens, with more than half already realized, showcasing Carolina's commitment to excellence and attention to detail.



Private Residence

Defined by a sequence of outdoor rooms, the garden harmoniously unifies the architecture with its surrounding environment.

Carolina Monteiro brings a fresh perspective to landscape design, crafting outdoor spaces that are as inviting as they are beautiful. Her focus on seamless integration between architecture and nature ensures that each garden feels like a natural extension of its surroundings. With an eye for detail and a passion for greenery, Monteiro aims to create serene havens that not only enhance the beauty of their environments but also enrich the lives of those who inhabit them.



S Hotel Jamaica

CLAD's landscape design for Montego Bay's first boutique hotel envisioned an oasis of swaying palms.