

# A Lifestyle Beyond Imagination



Turnberry's vision for ONE Park Tower  
is to create residences that inspire,  
energize, and redefine modern living.  
Set within our dynamic SoLé Mia community,  
it's a lifestyle beyond imagination.

*“ONE Park Tower is a project that combines Turnberry’s expertise in building vibrant communities and in creating luxury lifestyle residences.”*

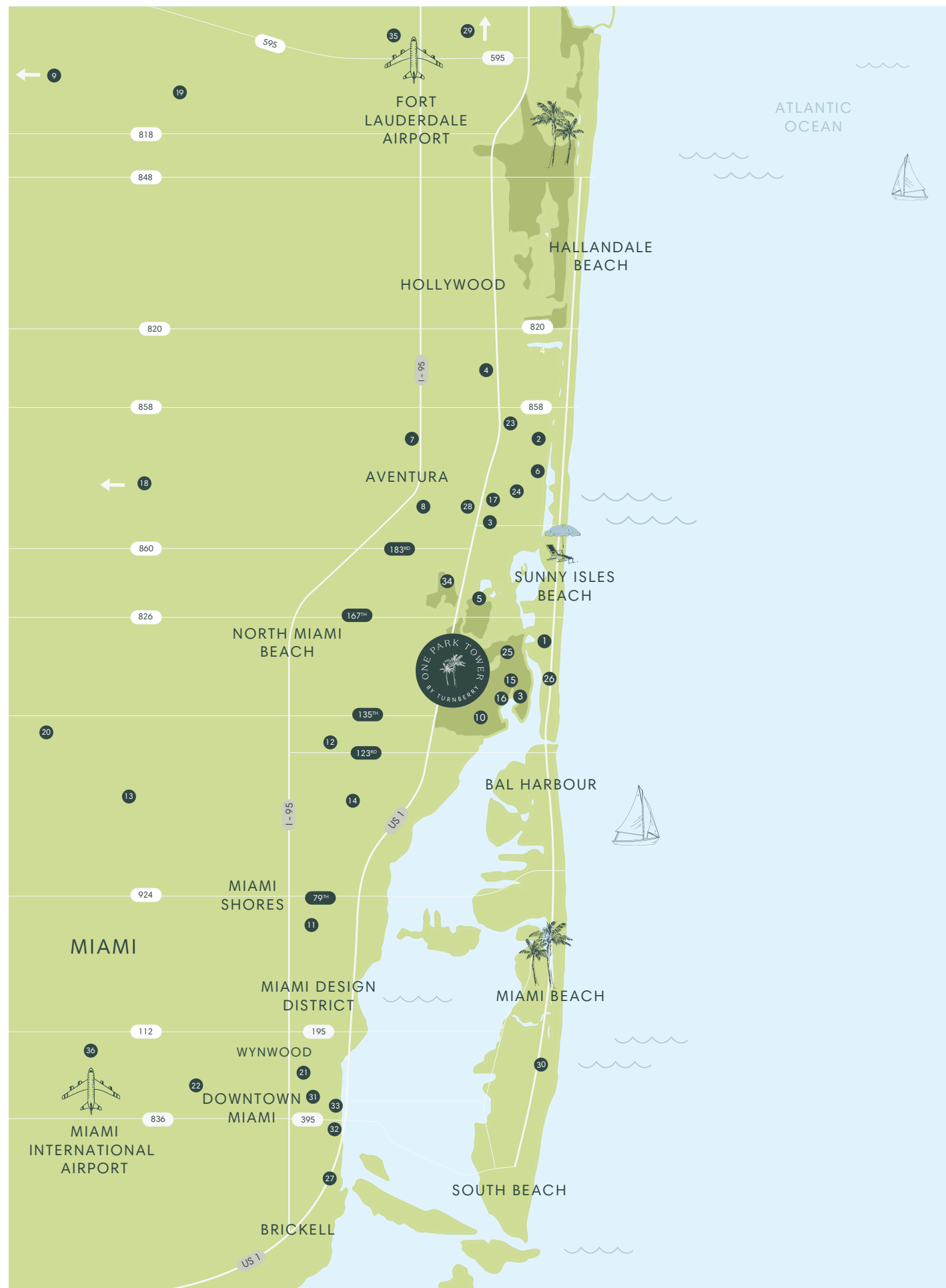
*— Jackie Soffer*

*Chairman and Chief Executive Officer of Turnberry*





Set on 184 acres between Biscayne Boulevard and Biscayne Bay alongside Oleta River State Park, SoLé Mia is the ultimate lifestyle-driven tropical community, and ONE Park Tower is its premier condominium tower. Developed by Turnberry, South Florida's most accomplished real estate visionary, and featuring world-class architecture by Arquitectonica, interiors by Meyer Davis Studio, and landscaping by DSBOCA, ONE Park Tower sets a new standard of excellence in luxury living.



ONE Park Tower is ideally located between Aventura, Biscayne Boulevard and Biscayne Bay, just 20 minutes from Miami Beach and Downtown Miami, accessible to everything South Florida has to offer, from sports and entertainment to luxury shopping and fine dining.

Nestled within SoLé Mia, the sprawling 184-acre master-planned community, ONE Park Tower is at the heart of South Florida's most luxurious new lifestyle destination. Minutes from Aventura Mall and Florida International University, and convenient to Miami Beach, Miami Design District, Downtown Miami, and Brickell Avenue, the location offers a serene tropical oasis with easy access to Greater Miami. Within the SoLé Mia community, residents will be just steps from amenities including Reserve Padel, the Mater Academy charter school for kindergarten through 5th grade students, restaurants including Sesame Bakery & Cafe and Pura Vida at Reserve, and the 363,000-square-foot University of Miami's UHealth Medical Center with dedicated programs in virtually every specialty including Women's Health, longevity, and more. Close to both Fort Lauderdale International Airport and Miami International Airport, the world is at your doorstep.

#### Marinas

1. Haulover Marina Center
2. Turnberry Marina
3. Williams Island Marina
4. Loggerhead Marina
5. Marina Palms
6. Waterways Marina

#### Hospitals

7. HCA Florida Aventura Hospital
8. Mt. Sinai Medical Center Aventura
9. Cleveland Clinic
10. University of Miami UHealth Medical Center at SoLé Mia (coming soon)

#### Schools

11. Barry University
12. Montessori School of North Miami
13. Miami Dade College
14. Miami Country Day School
15. FIU North Campus
16. MAST Academy at FIU
17. Mater Academy at SoLé Mia (coming soon)

#### Recreational

18. Tidal Cove Water Park
19. Hard Rock Stadium
20. Hard Rock Casino
21. Amelia Earhart Park
22. Kaseya Center
23. Marlins Park
24. Gulfstream Park Racing Casino & Village
25. Turnberry Isle Golf Course
26. Oletta River State Park
27. Haulover Park

#### Shopping

28. Brickell City Centre
29. Aventura Mall
30. Las Olas Blvd

#### Arts & Culture

31. Miami Beach Convention Center
32. Adrienne Arsht Center
33. Frost Museum of Science
34. Pérez Art Museum Miami
35. Ancient Spanish Monastery

#### Airports

36. Fort Lauderdale-Hollywood International Airport
37. Miami International Airport



*Inspired by the extraordinary natural environment surrounding ONE Park Tower — Oleta River State Park, the Atlantic Ocean, and Biscayne Bay.*

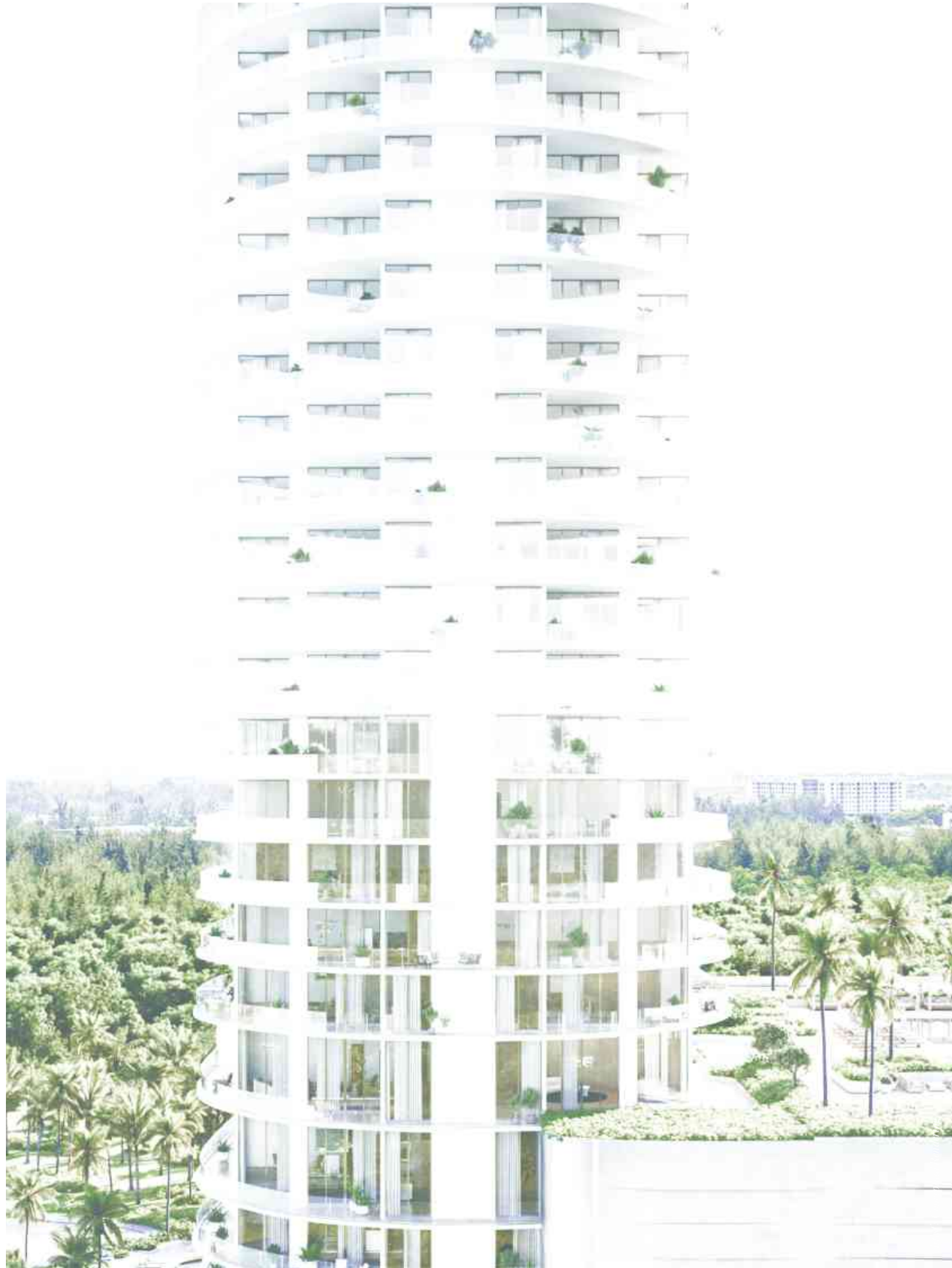




*From Downtown Miami and Miami Beach to Aventura, Bal Harbour and Sunny Isles, the best of South Florida's shopping, dining, entertainment, and nightlife is at your doorstep.*



## A Lifestyle Beyond Imagination



ONE Park Tower by Turnberry is the jewel in the crown of Solé Mia, the brand-new 184-acre city-within-a-city. This opulent condominium is a testament to the visionary genius of Turnberry, South Florida's foremost real estate developer. ONE Park Tower exudes unparalleled elegance, set against a backdrop of awe-inspiring panoramic vistas encompassing the Atlantic Ocean, Biscayne Bay, and the serene expanse of Oleta River State Park.

Immerse yourself in the landscaped grounds, where every square inch is a testament to luxury living. Discover a treasure trove of both indoor and outdoor amenities, including the magnificent seven-acre Crystal Lagoon™ complete with private sandy beaches and world-class hospitality services. From the refined architectural design crafted by Arquitectonica to the sumptuous interiors envisioned by Meyer Davis Studio and the meticulously cultivated gardens by DSBoca, each facet of ONE Park Tower has been conceived to offer a lifestyle that is nothing short of extraordinary.

## Building Features

---

Distinctive 33-story tower designed by award-winning firm Arquitectonica

Panoramic views spanning the Atlantic Ocean, the Miami skyline, Oleta River State Park, and the seven-acre Laguna SoLé

Residential interiors by Meyer Davis Studio

299 luxury one-, two-, and three-bedroom residences

Three floors of penthouse residences

High-speed elevator access to residences

Direct high-speed access to corner residences

Secured garage parking with gated entry

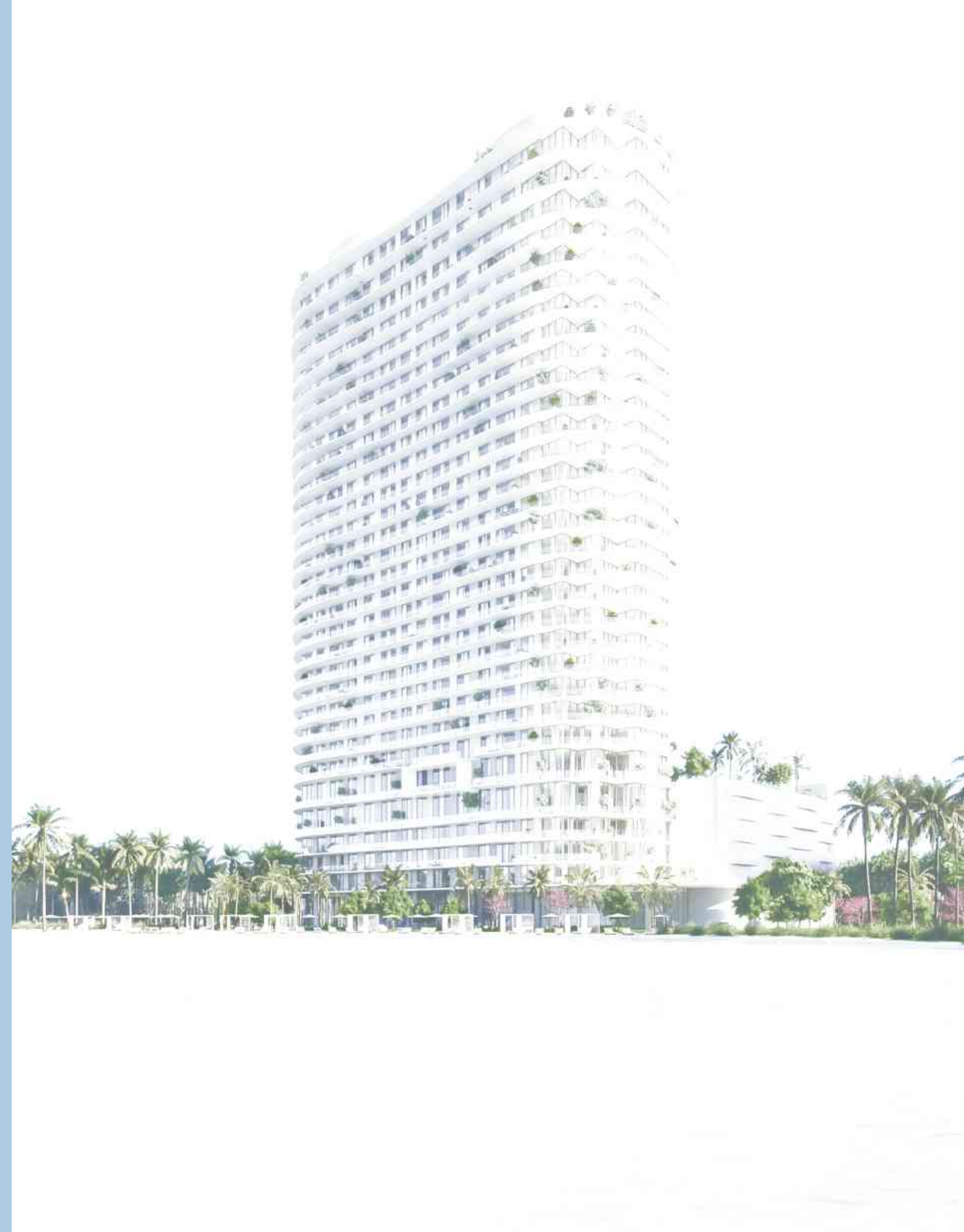
Private residential porte cochère drop-off and lobby

24-hour professional security and video surveillance

Amenity deck

Luxurious lobby

Private walking trails





Artist's Conceptual Rendering

ONE Park Tower epitomizes South Florida luxury living, boasting an assortment of indoor and outdoor amenities that harmoniously culminate in a world-class, resort-inspired lifestyle.

A private drive leads through well-manicured landscaping. Passing through the elegant porte-cochère, you enter a place that is luxurious, relaxing, and serene. A home. Your home. Sun-soaked spaces, meticulously designed to echo the surrounding natural splendor, blend harmoniously with the architecture to evoke a tranquil yet invigorating ambiance.

The extensive and thoughtfully curated selection of indoor and outdoor amenities caters to every facet of fitness, well-being, and social interaction. Ranging from ONE Jardin, a half-acre private tropical garden created by the internationally

acclaimed landscape architect DSBoca, to the exclusive sandy shores of ONE Beach Club and the seven-acre Crystal Lagoon™, every aspect of the residential experience rivals the grandeur of the world's most renowned resorts.

As you venture indoors, you'll discover exquisitely furnished spaces designed for relaxation, recreation, business, and entertainment. A cutting-edge fitness center and a lavishly appointed spa stand ready to cater to your needs, ensuring that healthful living and indulgence are mere moments from home.

*The luxurious, well-appointed double-height lobby welcomes you home in style designed by Meyer Davis.*



## Residences Features

---

Panoramic views spanning Oleta River State Park, the Atlantic Ocean, the Miami skyline, and Laguna SoLé

Spacious, fully finished open floor plans with 9-foot-plus ceiling heights

Oversized private, finished-floor, wrap-around balconies with seamless glass railings

Primary suite with solid-core doors and large his-and-hers walk-in closets

Sound-insulated walls throughout

Smart-technology ready

---

### Kitchen

Italian kitchen cabinetry by Italkraft

Porcelain stoneware countertops

Sub-Zero and Wolf appliances

Front-load quiet washer and dryer

---

### Bathrooms

Italian bathroom vanities by Italkraft

European-style bathroom fixtures

Frameless, glass-enclosed showers with handheld shower heads

Primary bath featuring wet room and soaking tub in select units



*Expansive private balconies offer ample space for dining and lounging surrounded by dramatic panoramic views.*





Entertain, dine, or just unwind  
against a stunning backdrop.

Meyer Davis Studio's elegantly crafted interiors offer a captivating showcase for the sweeping panoramic vistas of the Atlantic Ocean, serene Biscayne Bay, natural beauty of Oleta River State Park, iconic Miami skyline, and the glittering seven-acre Laguna SoLé. The generously proportioned open floorplans, graced with ceilings soaring to nine feet and beyond, seamlessly extend to spacious private wrap-around balconies, finished at floor level and adorned with glass railings, blending indoor and outdoor living.

Every residence has been crafted to the highest standards of excellence. The gourmet kitchens, fit for a chef, feature exquisite Italian cabinetry by Italkraft, top-of-the-line Sub-Zero and Wolf appliances, and sleek porcelain stoneware countertops and backsplashes. The bathrooms, adorned with Italian vanities by Italkraft and European-style fixtures, boast frameless glass-enclosed showers equipped with handheld showerheads. Some primary bathrooms are thoughtfully designed to include a luxurious wet room and a sumptuous soaking tub.



*Sweeping floor-to-ceiling windows flood the interiors with natural light, accentuating the designer finishes curated by Meyer Davis Studio in a soothing, neutral color palette.*



*Primary bedrooms feature incredible views through floor-to-ceiling windows that also define the spaces as a place for relaxation and retreat.*





*Bathrooms become personal spas with frameless, glass-enclosed showers, soaking tubs, and Italian vanities by Italkraft complemented by European-style fixtures.*

## Indoor Amenities

---

Fully outfitted state-of-the-art fitness center overlooking ONE Beach Club

Lavish men's and women's spas with dedicated massage treatment rooms, sauna, and steam

Cutting-edge golf simulator studio offering lifelike courses

Luxurious clubroom with bar, billiard room, catering kitchen, and media center

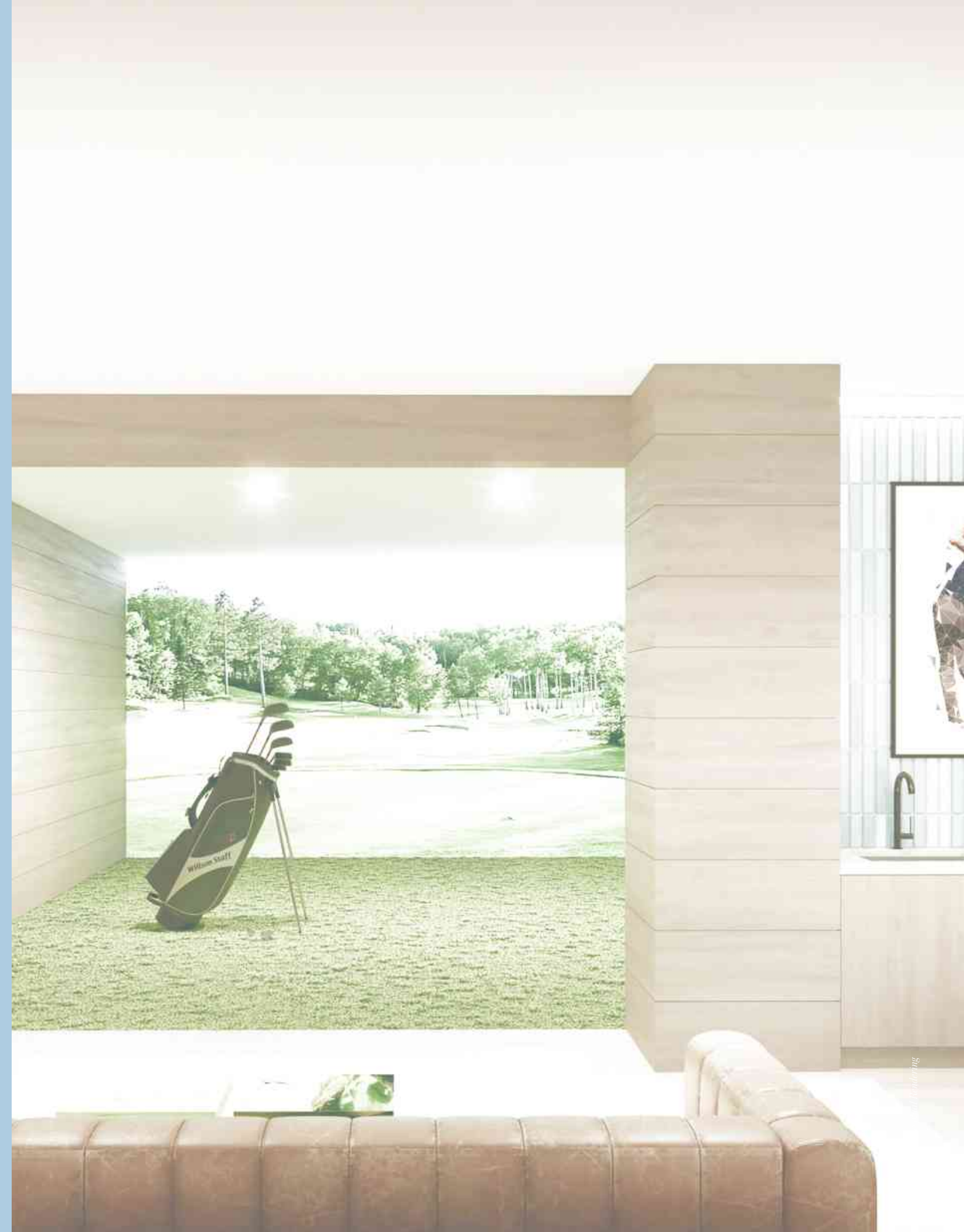
Dedicated teen game room offering a stylish and safe space for entertainment and socializing

Sixth-floor indoor/outdoor social lounge overlooking ONE Beach Club

Executive business lounge with co-working space

ONE Café with coffee and daily newspaper service

Pet-friendly building with pet spa and grooming area



*Gathering spaces for residents are outfitted with comfortable seating, ambient lighting, and luxe materials to inspire connection and conversation.*



A multitude of indoor and outdoor amenities beckon daily, all making the most of the splendor of South Florida's tropical climate. The state-of-the-art fitness center has top-notch equipment and dedicated studios for yoga, spin, and Pilates enthusiasts. Meanwhile, outdoor sports enthusiasts can find everything from pickleball courts to scenic walking trails.



## Outdoor Amenities

---

Direct access to ONE Beach Club with sandy beaches and a seven-acre Crystal Lagoon™

Private beach cabanas for relaxation and shade

Scenic picnic spots for outdoor dining and gathering

Water activities including kayaking, paddleboarding, water mats, inflatables, and snorkeling

Concierge-style service for snacks, towels, and beverages

ONE Jardin and lushly landscaped pathways, including a 37-acre green space offering serenity, leisurely strolls, outdoor activities, and community gatherings, seamlessly blending nature with modern luxury living

Family-friendly playground facilities

Padel and pickleball courts for sports enthusiasts

Spacious sixth-floor social deck with elevated oasis pool and spa featuring ocean views

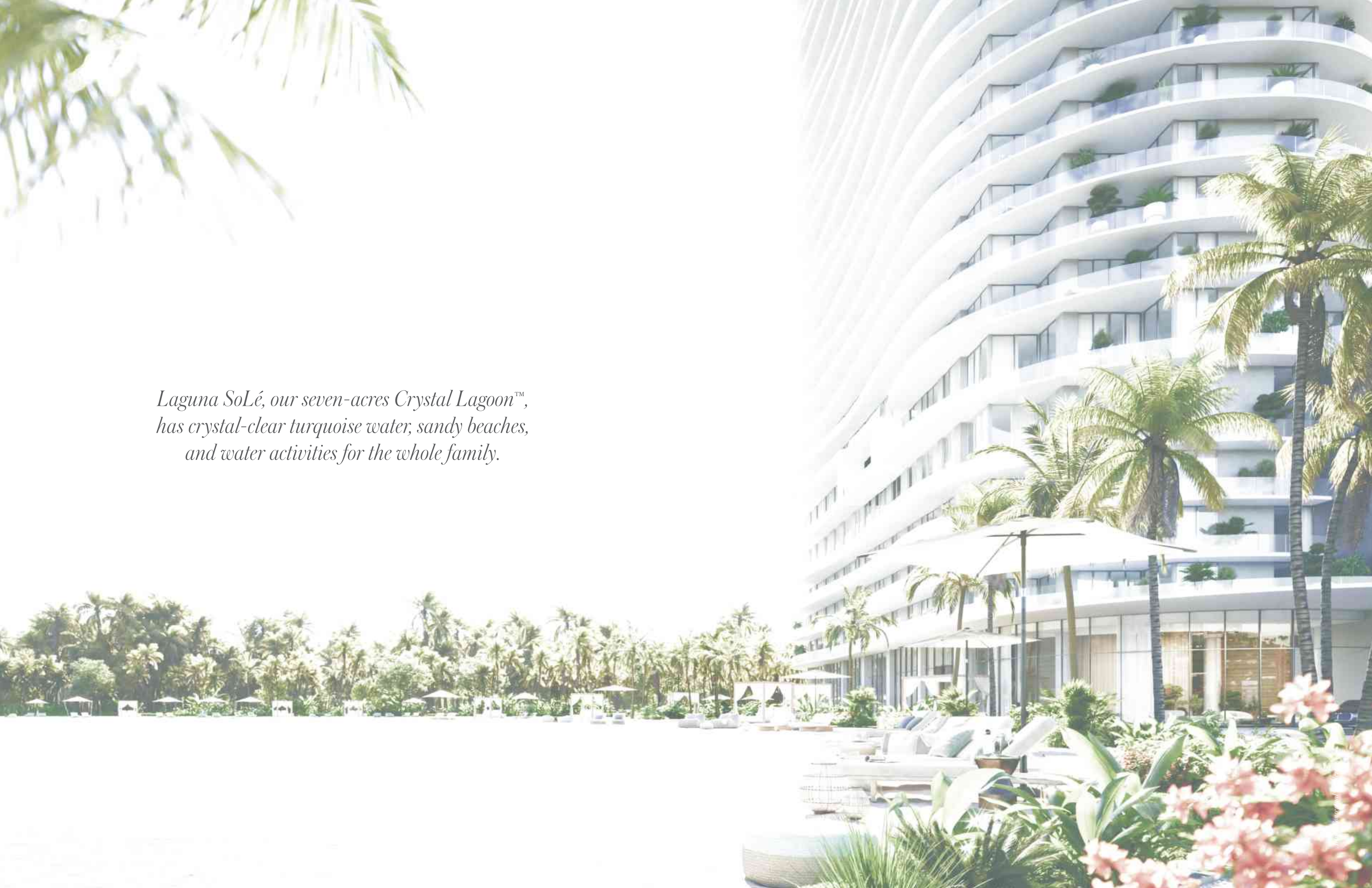
Convenient ground-floor pool with comfortable lounge chairs and landscaped surroundings

Poolside summer kitchen

Children's play zone

Dog-walking trails





*Laguna SoLé, our seven-acres Crystal Lagoon™, has crystal-clear turquoise water, sandy beaches, and water activities for the whole family.*

With cabanas, picnic spots, and concierge-style towel, snack, and beverage service, ONE Laguna Beach Club offers the perfect setting for enjoying a wide array of water sports and activities.



From kayaking and paddleboarding to snorkeling, paddle boating, and even enjoying water mats and inflatables, there's something for all ages to relish.





Poolside relaxation at ONE Park Tower is effortlessly luxurious, with chaise lounges for sunbathing complemented by sleek white umbrellas and pergolas adorned with vibrant, flowering vines to provide shade. Landscaped pathways encircling the pool also offer inviting seating areas, perfect for intimate gatherings with friends and family.





*Two pools—on the ground floor and the amenity deck—offer sun-kissed relaxation, shady seclusion, and an elevated poolside experience.*



HAULOVER PARK

← AVENTURA

AL HARBOR

AL HARBOR ISLANDS



PATH TO INTRACOASTAL

FUTURE RESIDENTIAL

VILLA LAGUNA

UHEALTH

FUTURE WATERFRONT RESTAURANT

FUTURE RESIDENTIAL COMMUNITY

MATER BY ACADEMICA

THE SHORELINE

PLAYGROUND

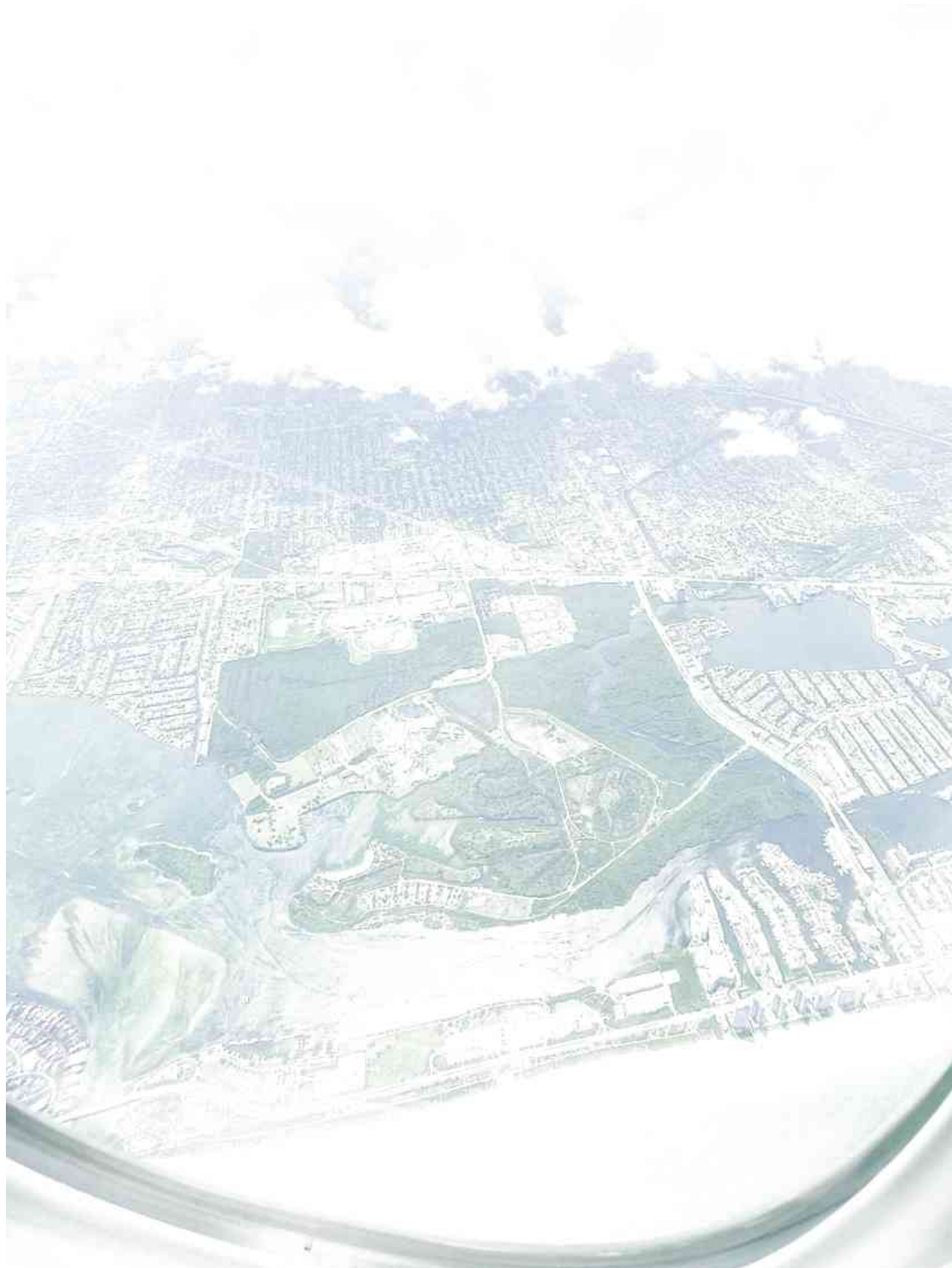
VILLA SOLÉ AND SESAME BY MOTEK

THE VILLAGE

FUTURE RETAIL/RESIDENTIAL

← BRIGHTLINE STATION

RESERVE PADEL AND PURA VIDA



ONE Park Tower's location, surrounded by a vast natural reserve and mere steps from the water, make it a South Florida destination like no other.



In addition to eight miles of jogging and bike paths throughout its 37 acres of green space, the adjoining 1000-acre nature reserve at Oleta River State Park offers 15 miles of running, biking, and canoeing in unspoiled nature.

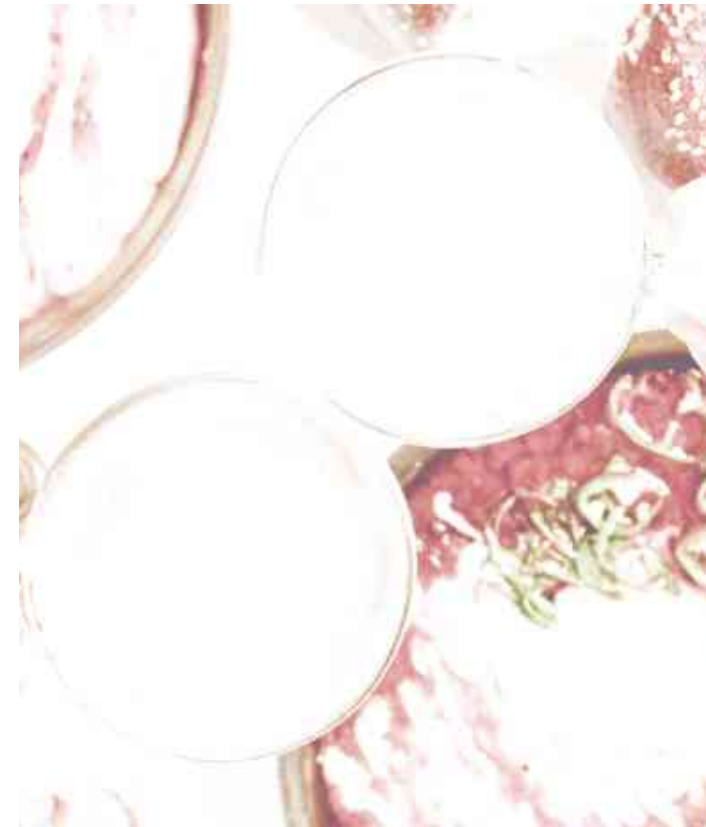
At ONE Park Tower, Oleta River State Park isn't merely a neighbor; it's an extended outdoor amenity, inviting you to explore and recharge. Escape city life with acres of lush greenery and miles of scenic bike trails and kayaking routes. Whether it's biking, kayaking, or simply taking a stroll, adventure awaits just beyond your doorstep. And Oleta River State Park isn't just a natural wonder, it's also a gathering place for neighbors and friends to picnic and socialize.

SoLé Mia is a first-of-its-kind neighborhood, offering the best in lifestyle amenities, commerce, convenience, and community living.

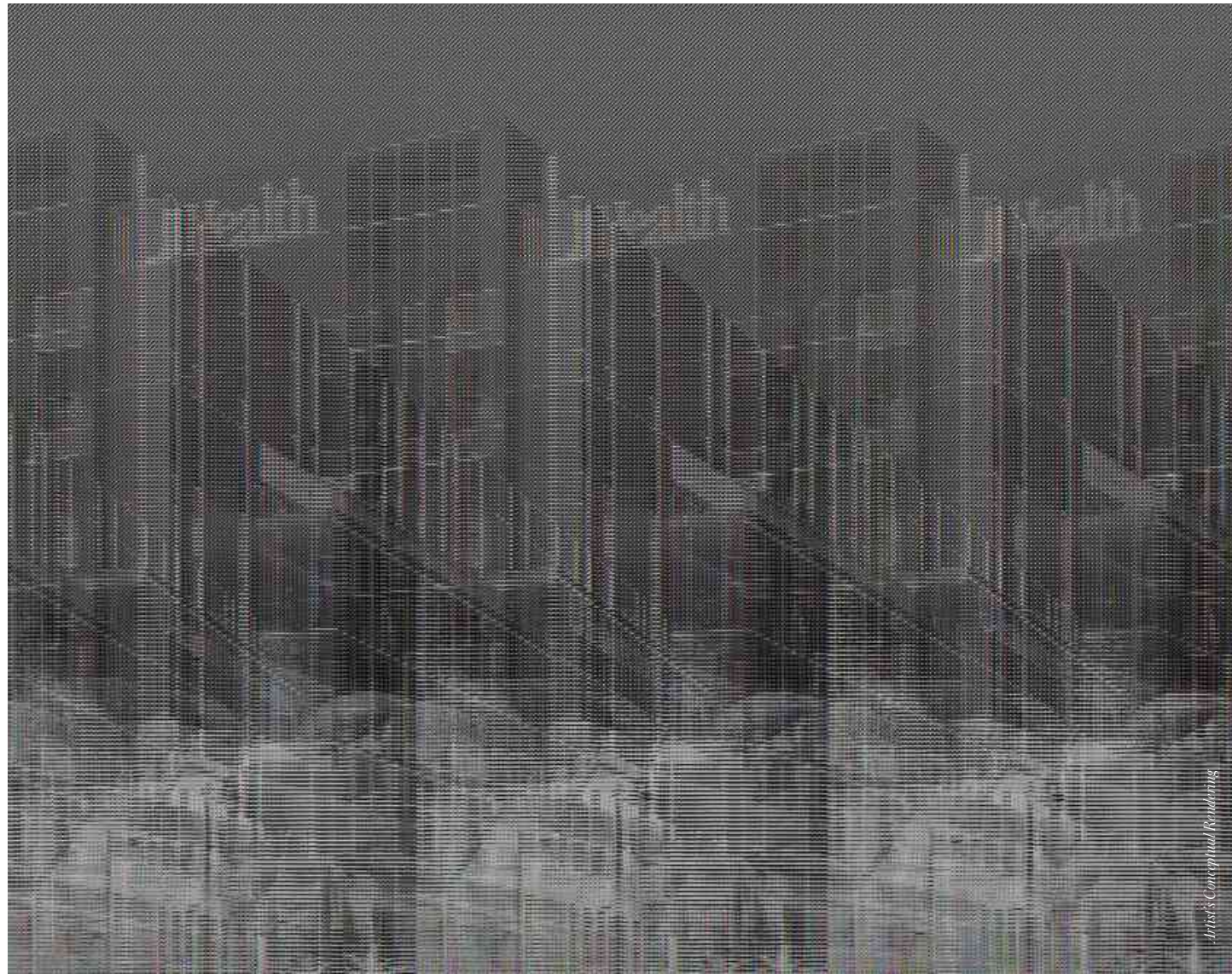


Take up the new trendy sport padel at the nearby world-class Padel Reserve Club, or stay in and enjoy the menu offerings at Pura Vida, or Sesame by Motek in SoLé Mia.

Photo: Miami Herald



SoLé Mia is reimagining how luxury residences, nature, wellness, water sports, shopping, and dining can come together to create the ultimate lifestyle-driven community. The 184-acre development with plans for thousands of residential units and 1.5 million square feet of retail and commercial space, as well as the K-5 charter school Mater Academy and a world-class University of Miami medical center, is surrounded by emerald-green parks and anchored by Laguna SoLé, South Florida's first 7-acre swimmable Crystal Lagoon®.



Artist's Conceptual Renderings of the future University of Miami Medical Center



SoLé Mia includes both the K-5 charter school Mater Academy by award-winning Academica, and a groundbreaking medical center from the University of Miami, with Florida International University right nearby.



Mater Academy will bring a top-notch K-5 charter school directly within the SoLé Mia community

Upon completion in 2024, the University of Miami UHealth will host a 363,000-square-foot, world-class academic medical center on 9.5 acres in SoLé Mia, with state-of-the-art procedure rooms, medical offices, meditation gardens, a public art mural, and terraces overlooking the lagoon.

Mater Academy, a K-5 charter school, will open its doors in 2025, a 90,000-square-foot facility featuring modern classrooms, ample green space, a rigorous curriculum that prepares students for success with an emphasis on STEM academics, and a range of extracurricular activities that take advantage of the lush surroundings and proximity to Oleta River State Park.



# Turnberry

Developer

Turnberry has revolutionized high-rise living and perfected the residential private club lifestyle. Led by Chairman and CEO Jackie Soffer, Turnberry has a more than 50-year history of placemaking with principles, creating exceptional destinations that inspire.



Aventura Mall, Aventura, FL

Among Turnberry's projects are many of South Florida's signature residential condominium developments, including Porto Vita, Turnberry Ocean Colony, the Tresor and Sorrento towers at Fontainebleau Miami Beach, and Virginia's Turnberry Arlington. Turnberry is developing SoLé Mia in partnership with LeFrak, a 184-acre community of residences, restaurants,

shops and world-class amenities including a 363,000 square-foot UHealth University of Miami Medical Center. The company is collaborating with Terra Group to develop the 800-key Grand Hyatt Miami Beach Convention Center Hotel. Turnberry's portfolio of properties includes Aventura Mall and JW Marriott Nashville.



Turnberry Ocean Club Residences, Sunny Isles Beach, FL

The development of ONE Park Tower has been led by South Florida's most accomplished real estate visionary working in collaboration with award-winning, internationally renowned and critically acclaimed partners.

---

Development by Turnberry

Turnberry has revolutionized high-rise living and perfected the residential private club lifestyle. Signature residential condominium developments it has created in South Florida include Porto Vita, Turnberry Ocean Colony, and the Trésor and Sorrento towers at Fontainebleau Miami Beach.

---

Sales by The Eklund | Gomes Team & Douglas Elliman Development Marketing

Celebrity and luxury-driven, The Eklund|Gomes Team is the #1 mega-team in the country at Douglas Elliman, the first and only nationwide super team with a network in New York, California, Texas, and Florida real estate. Eklund|Gomes was founded by John Gomes and Fredrik Eklund, star of Bravo's Emmy-nominated Million Dollar Listing New York and Million Dollar Listing Los Angeles. The Team has sold over \$25 Billion of residential real estate over the last decade. With 96 agents in 5 states and 13 offices, there is no real estate team with more reach, exposure, influence or more celebrity sales.

---

Architecture by Arquitectonica

Arquitectonica is an award-winning Miami-based firm with offices worldwide. Founded in 1977, it is led by Bernardo Fort-Brescia, Laurinda H. Spear, and Raymond Fort. Its work, which includes mixed-use developments, resorts, hotels, luxury condominiums, schools, universities, and museums, has been featured in leading publications including Architectural Record, Progressive Architecture, Time, Fortune, Abitare, and Domus. Its designs have also been exhibited in major museums across the world. Luxury residential properties by Arquitectonica include Icon Brickell, Marquis Miami, Atlantis, Beach House 8, and 500 Brickell. The firm also designs hotels that redefine the guest experience and has worked on hospitality projects, some with spas, including Mr. C Coconut Grove, Mandarin Oriental, St. Regis, Westin, W, Four Seasons, Banyan Tree, Canyon Ranch, Raffles, Viceroy, and many others.

---

Landscape Architecture by DSBoca

Design Studio Boca is a design-oriented landscape architecture and planning firm located in Boca Raton, FL. This boutique design firm was founded in 2001 by Mark Jacobsen and Joe Gordon. DSBoca has a wide range of experience specializing in mixed use developments, resort hotels, destination retail, luxury high-rise residential, commercial office buildings, and specialty commercial venues. The firm prides itself on providing its clients with exceptional service while helping them reach their development goals.


---

Interior Design by Meyer Davis

Meyer Davis is a globally recognized New York City-based design boutique specializing in residential, hospitality, retail, and workplace environments. Founded in 1999 by Will Meyer and Gray Davis, the firm has established itself at the forefront of high-end commercial and residential design practices throughout the U.S. and abroad. Meyer Davis designs seamless physical experiences tailored to its clients' individuality, combining principles of great design with a clear vision for the experience it seeks to create. The designers consider each new project an opportunity to bring a unique and powerful story to life. Playing with space, form, texture, and light, they develop a visual experience that seeks to compel and inspire. Meyer Davis believes that great design works on multiple levels, weaving together bold design moves and striking details to ensure that when completed, each project makes an immediate and lasting impact.

## ONE Park Tower by Turnberry

2411 Laguna Circle, North Miami, FL 33181

 NOT AN OFFER WHERE PROHIBITED BY STATE STATUTES. THE COMPLETE OFFERING TERMS ARE IN A FLORIDA PROSPECTUS AVAILABLE FROM DEVELOPER. WE ARE PLEDGED TO THE LETTER AND SPIRIT OF THE US POLICY FOR ACHIEVEMENT OF EQUAL HOUSING OPPORTUNITY THROUGHOUT THE NATION. WE ENCOURAGE AND SUPPORT AN AFFIRMATIVE ADVERTISING AND MARKETING PROGRAM IN WHICH THERE ARE NO BARRIERS TO OBTAINING HOUSING BECAUSE OF RACE, COLOR, RELIGION, SEX, HANDICAP, FAMILIAL STATUS OR NATIONAL ORIGIN. ALL REAL ESTATE ADVERTISED HEREIN IS SUBJECT TO THE US FEDERAL FAIR HOUSING ACT OF 1968 WHICH MAKES IT ILLEGAL TO MAKE OR PUBLISH ANY ADVERTISEMENT THAT INDICATES ANY PREFERENCE, LIMITATION, OR DISCRIMINATION BASED ON RACE, COLOR, RELIGION, SEX, HANDICAP, FAMILIAL STATUS, OR NATIONAL ORIGIN. PLEASE CHECK WITH YOUR LOCAL GOVERNMENT AGENCY FOR MORE INFORMATION. ORAL REPRESENTATIONS CANNOT BE RELIED UPON AS CORRECTLY STATING REPRESENTATIONS OF THE DEVELOPER. FOR CORRECT REPRESENTATIONS, MAKE REFERENCE TO THE DOCUMENTS REQUIRED BY SECTION 718.503, FLORIDA STATUTES, TO BE FURNISHED BY A DEVELOPER TO A BUYER. THE SKETCHES, RENDERINGS, PICTURES AND ILLUSTRATIONS ARE PROPOSED ONLY AND THE DEVELOPER RESERVES THE RIGHT TO MODIFY, REVISE OR WITHDRAW ANY OR ALL OF THE SAME AT ITS SOLE DISCRETION WITHOUT NOTICE. THE RENDERINGS ILLUSTRATE AND DEPICT A LIFESTYLE. HOWEVER, AMENITIES, FEATURES AND SPECIFICATIONS ARE SUBJECT TO CHANGE WITHOUT NOTICE. ALL INFORMATION IS DEEMED RELIABLE BUT IS NOT GUARANTEED AND SHOULD BE INDEPENDENTLY VERIFIED. NOTE: PLAN MATERIALS AND SPECIFICATIONS ARE SUBJECT TO ARCHITECTURAL AND OTHER REVISIONS AT THE SOLE DISCRETION OF THE DEVELOPER, BUILDER OR ARCHITECT, OR AS MAY BE REQUESTED BY LAW. FLOOR PLANS MAY NOT BE TO SCALE. ANY FURNITURE, APPLIANCES OR DECORATOR READY ITEMS DEPICTED HEREIN ARE SHOWN FOR ARTISTIC AND ILLUSTRATIVE PURPOSES ONLY AND ARE NOT INCLUDED IN THE PURCHASE AND SALE OF THE RESIDENCE. STATED DIMENSIONS MAY BE MEASURED TO THE EXTERIOR BOUNDARIES OF THE EXTERIOR WALL AND THE CENTER LINE OF THE INTERIOR DEMISING WALLS AND, IN FACT, COULD VARY FROM THE DIMENSIONS THAT WOULD BE DETERMINED BY USING THE DESCRIPTION AND DEFINITION OF THE "UNIT" SET FORTH IN THE DECLARATION (WHICH GENERALLY ONLY INCLUDES THE INTERIOR AIRSPACE BETWEEN THE PERIMETER WALLS AND EXCLUDES INTERIOR STRUCTURAL COMPONENTS). ALL DIMENSIONS ARE APPROXIMATE AND ALL FLOOR PLANS AND DEVELOPMENT PLANS ARE SUBJECT TO CHANGE. YOU MAY NOT RELY ON ANY ADVERTISING, PICTURES, RENDERINGS, FLOORPLANS, DESCRIPTIONS OR ORAL REPRESENTATIONS TO ENTER INTO A PURCHASE AND SALE AGREEMENT FOR ANY UNIT BUT ONLY ON THE FLORIDA PROSPECTUS AND THE OTHER DOCUMENTS REQUIRED TO BE PROVIDED TO A PROSPECTIVE PURCHASER BY THE DEVELOPER AND ON WHICH THEY RELIED TO MAKE A BUYING DECISION. WE PARTNER WITH A THIRD-PARTY AD NETWORK TO EITHER DISPLAY ADVERTISING ON OUR WEBSITE OR TO MANAGE OUR ADVERTISING ON OTHER SITES. OUR AD NETWORK PARTNER MAY USE COOKIES AND WEB BEACONS TO COLLECT NON-PERSONALLY IDENTIFIABLE INFORMATION ABOUT YOUR ACTIVITIES ON THIS AND OTHER WEBSITES TO PROVIDE YOU TARGETED ADVERTISING BASED UPON YOUR INTERESTS. IF YOU WISH TO NOT HAVE THIS INFORMATION USED FOR THE PURPOSE OF SERVING YOU TARGETED ADS, YOU MAY OPT-OUT BY ADVISING DEVELOPER IN WRITING. PLEASE NOTE THIS MAY NOT OPT YOU OUT OF BEING SERVED ADVERTISING AND YOU MAY CONTINUE TO RECEIVE GENERIC ADS

All room sizes and floorplan measurements are approximate and may vary per unit. Floorplans and unit features are preliminary and proposed only. Developer reserves the right to modify, revise, change or withdraw any or all of same in its sole and absolute discretion and without prior notice. Depictions of furnishings, finishes, appliances, counters, soffits, floor coverings and other matters of detail, including, without limitation, items of finish and decoration are conceptual only and are not necessarily included in each unit.

Where home is just a few paddles away.