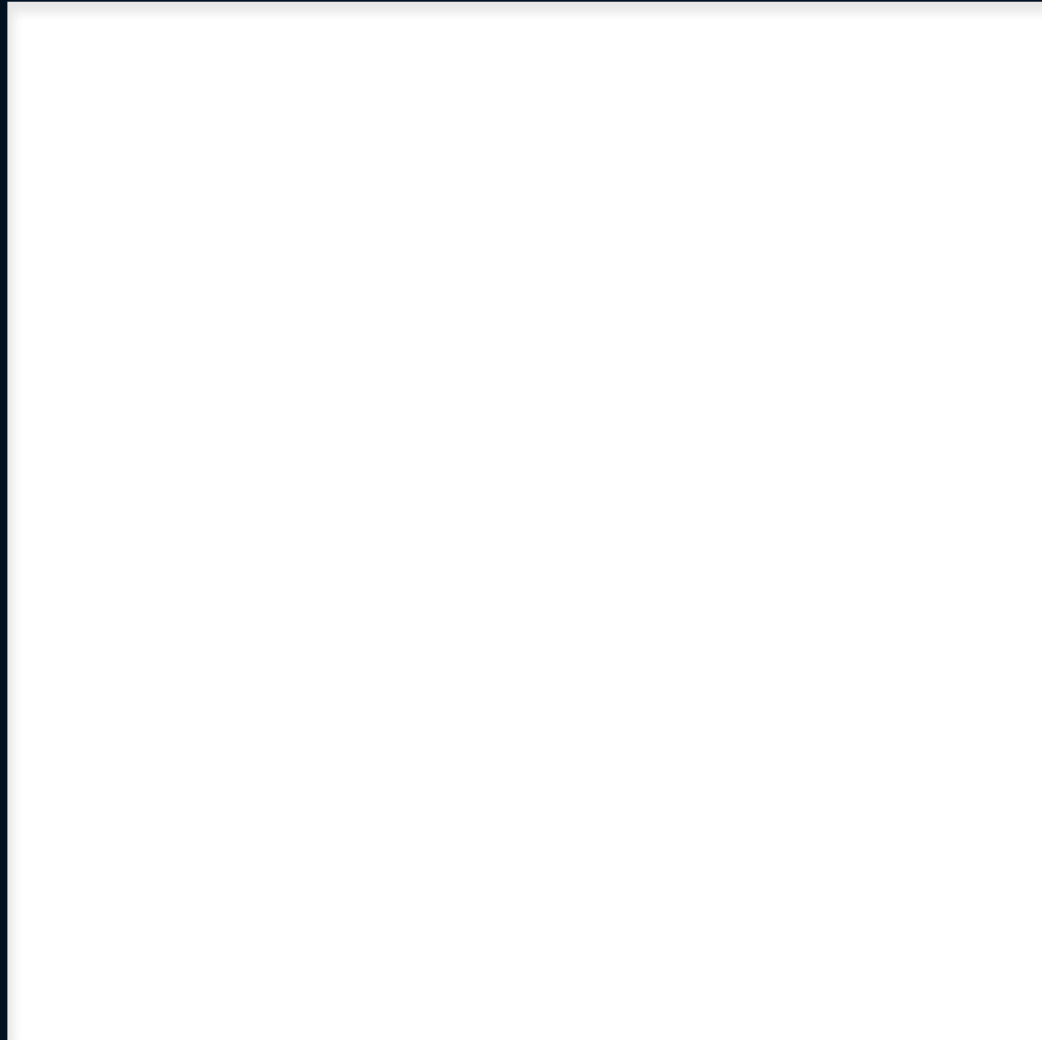


THE ESTATE COLLECTION



**THE RITZ-CARLTON
RESIDENCES**

PALM BEACH GARDENS



THE ESTATE COLLECTION



**THE RITZ-CARLTON
RESIDENCES**

PALM BEACH GARDENS



ARTIST'S CONCEPT

A LANDMARK ADDITION

TO PALM BEACH GARDENS

The refined embodiment of ocean-inspired ease, The Ritz-Carlton Residences, Palm Beach Gardens deliver a new level of coastal leisure—transforming fourteen acres of Intracoastal waterfront into an intimate enclave of 106 estate residences and private marina.



Imbued with an aura of coastal calm, sweeping Intracoastal views and a tropical landscape of natural wonder, no detail has been overlooked in the cultivation of Palm Beach Gardens' most exceptional, new waterfront enclave.



SOWING
THE SEEDS
OF A
BEAUTIFUL
PLACE
TAKES AN
EXPERIENCED
HAND.

CATALFUMO COMPANIES WRITE
A DYNAMIC, NEW BLUEPRINT FOR APPOINTED,
COASTAL LIVING.

The Residences feature three, seven-story residential buildings across fourteen acres of Palm Beach Gardens' most pristine stretch of Intracoastal waterfront.



The Residences feature three, seven-story residential buildings across fourteen acres of Palm Beach Gardens' most pristine stretch of Intracoastal waterfront.

ARTIST'S CONCEPT

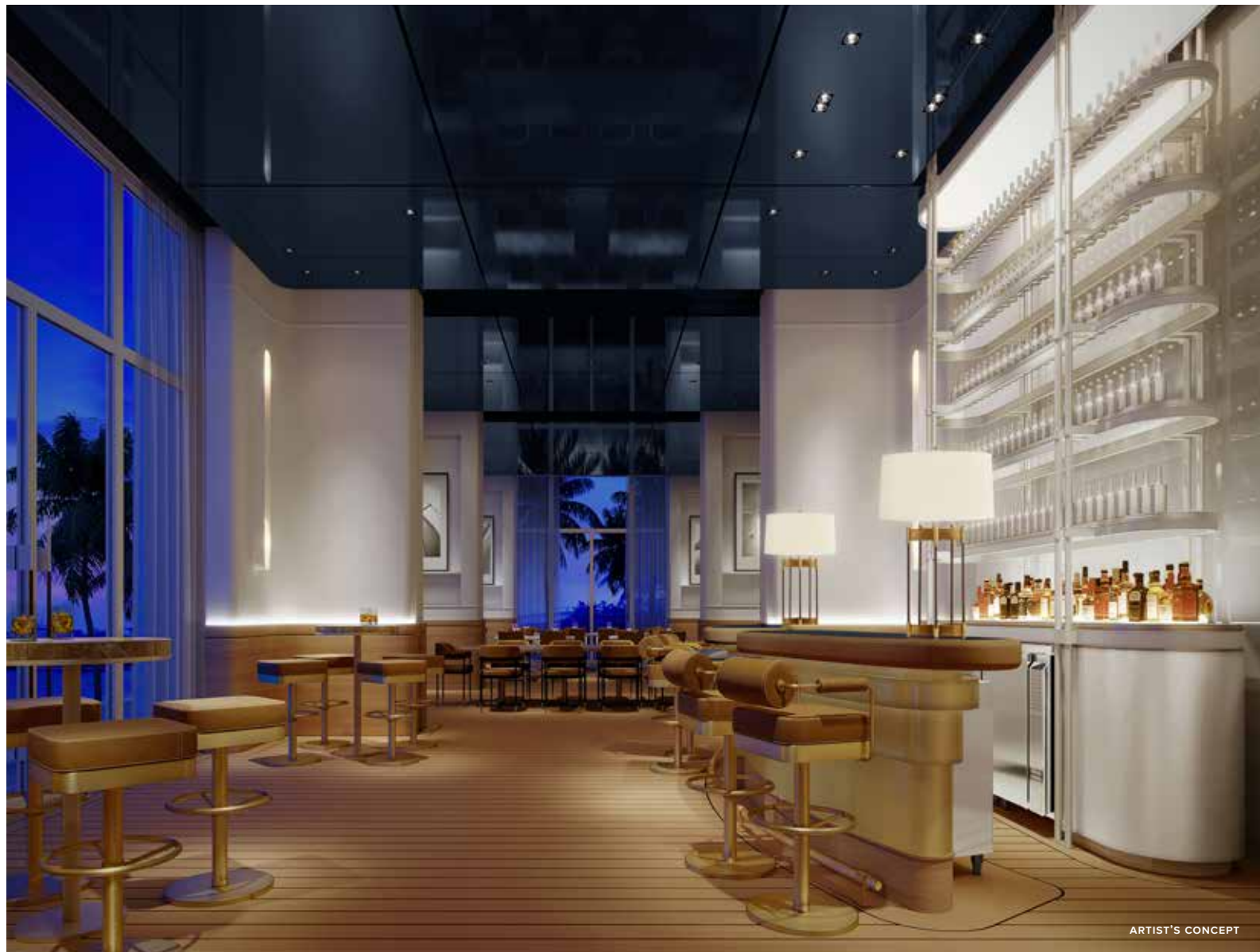
A BEAUTIFULLY SERVICED LIFE

STANDARDS OF SERVICE EXCELLENCE THAT HOLD LEGENDARY STATUS

THE RITZ-CARLTON COMMITMENT TO SERVICE
EXCELLENCE CONTINUES TO SHAPE THE EXPERIENCE OF LIVING WELL.

Long associated with refinement and distinction—The Ritz-Carlton sets the benchmark for elevated levels of hospitality around the world. A name synonymous with the time-honored tradition of service excellence, The Ritz-Carlton delivers a superlative expression of personalized care with unwavering devotion. Today, The Ritz-Carlton Residences, Palm Beach Gardens continue the legacy of service excellence that has made the brand a leader in global hospitality.





THE WARMEST OF WELCOMES

Reflecting a refined sense of place and aura of coastal ease, owners and their guests feel an immediate sense of welcome upon arrival in the grand, yet intimate, residential lobby.



Anchored by a 29-slip, private marina with capacity to accommodate vessels up to 75 feet, direct access to the Palm Beach and Jupiter Inlets offers instant escape to the Atlantic.



Waterfront clubhouse lounge

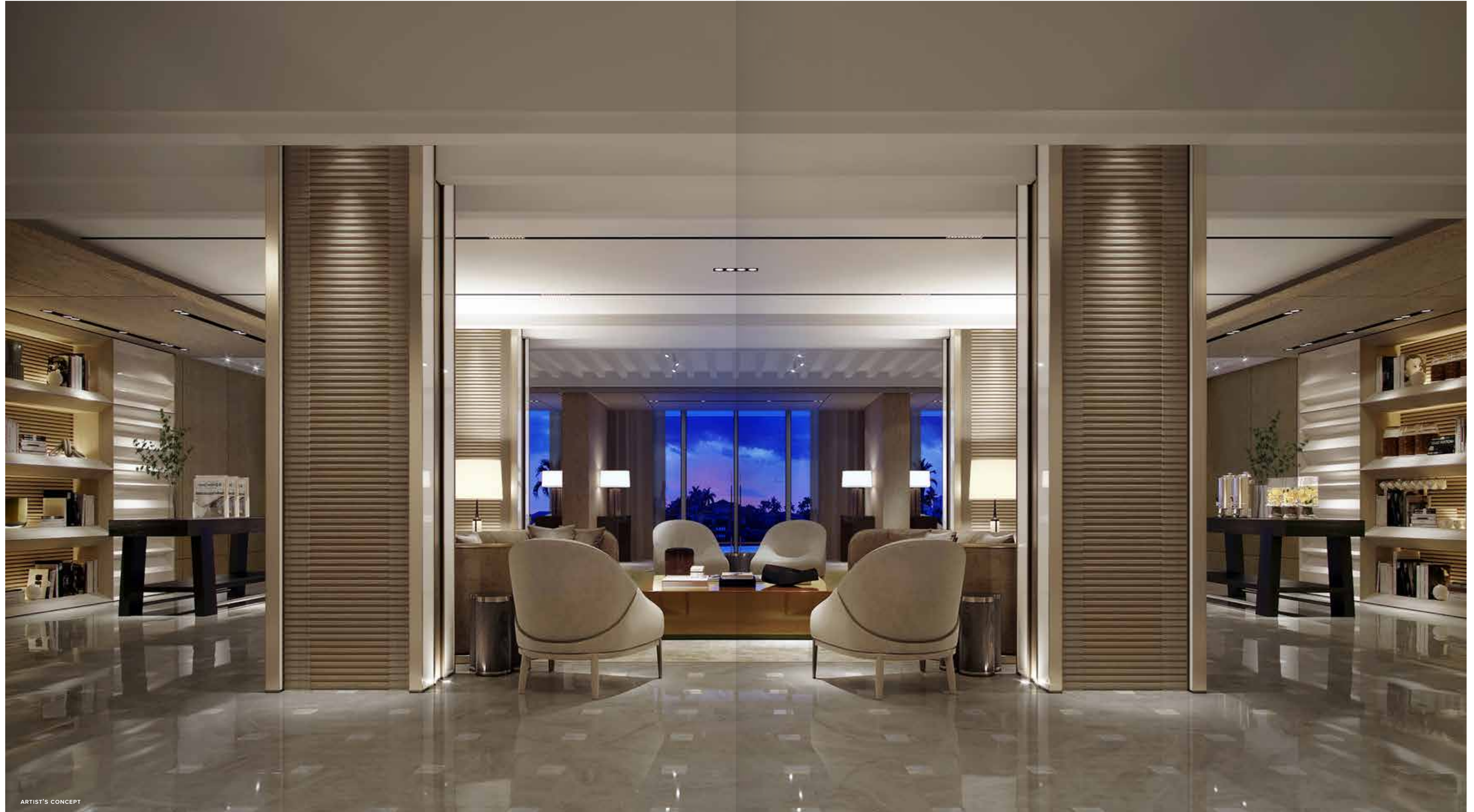
WATERFRONT WORLD OF WONDER

A HAVEN OF COASTAL CALM

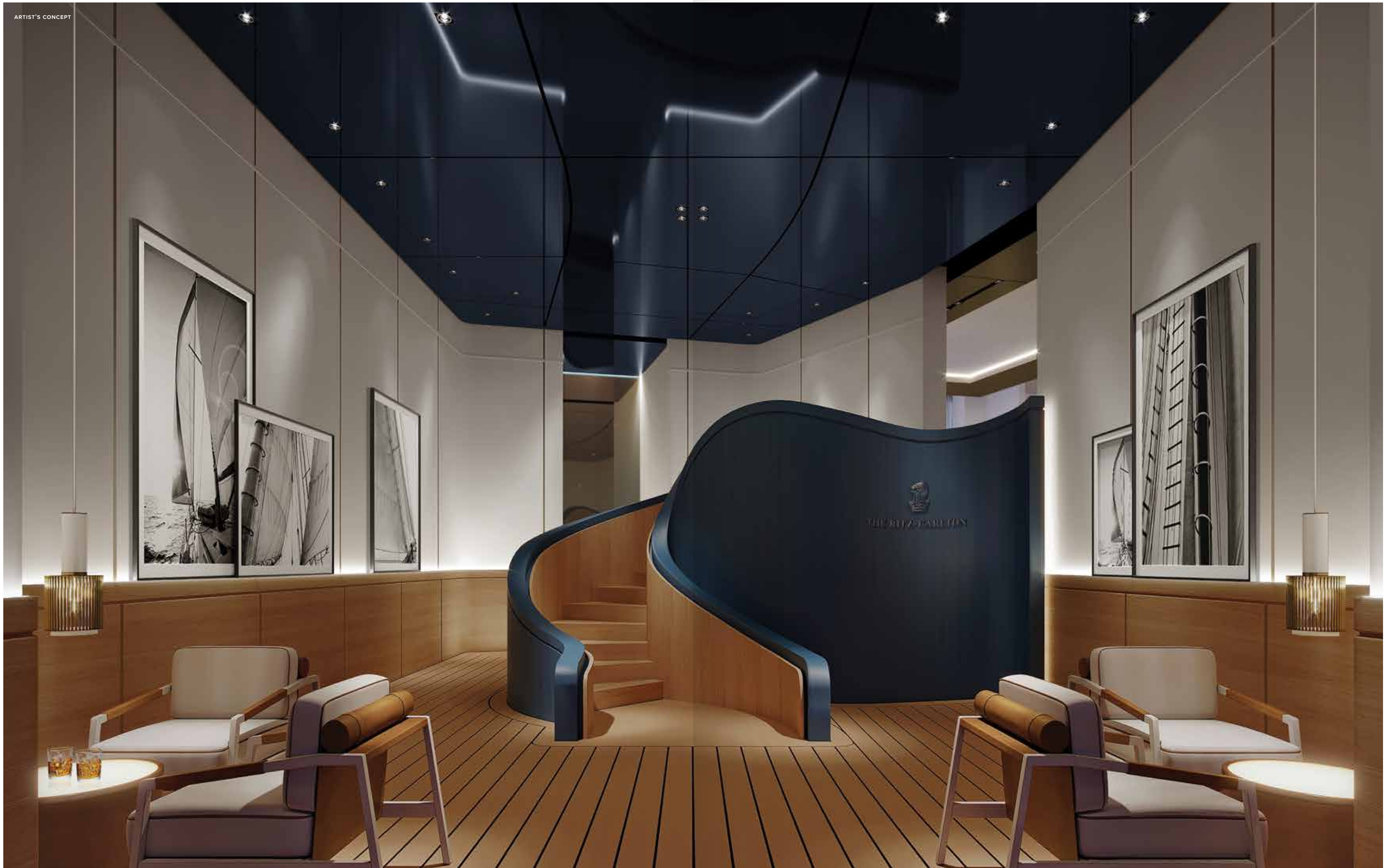
FOURTEEN ACRES OF WATERFRONT AMENITIES
AND PRIVATE MARINA

From a private marina to an impressive, waterfront clubhouse designed to inspire, an exceptional array of amenities creates the ultimate compliment to a vibrant, coastal lifestyle. Throughout more than 20,000 square feet of indoor amenities, a sense of effortless well-being abounds. In tandem with the distinguished courtesies of anticipatory service, this suite of masterfully-choreographed amenities not only accommodates, but elevates most any desire; transforming comfort and convenience into an exceptional experience in living.

The private, waterfront clubhouse features richly-appointed entertainment spaces including residents' lounge, event kitchen, library, coffee bar and game room.



ARTIST'S CONCEPT



Waterfront Clubhouse Lounge



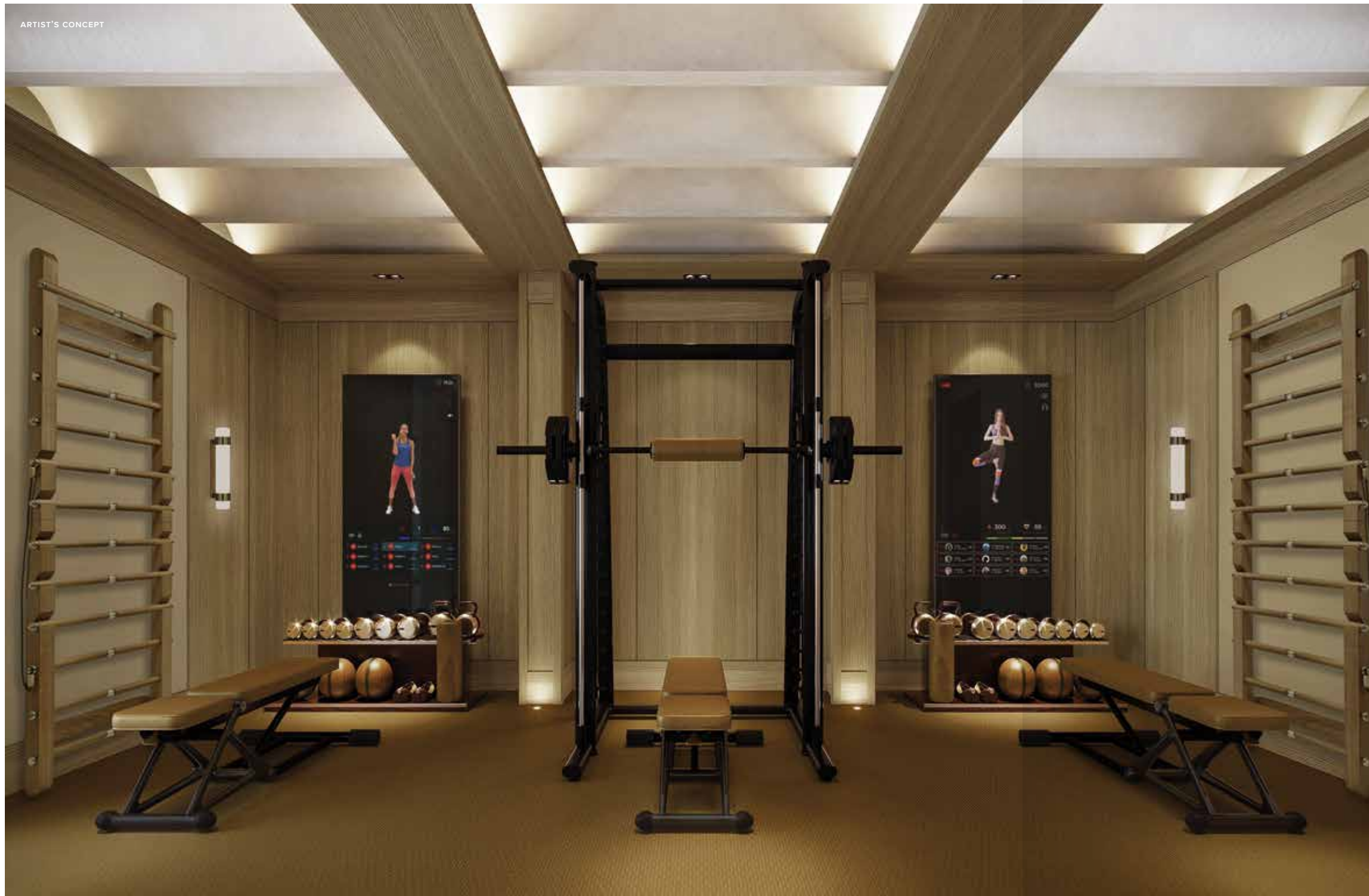
Above: Game Room Below: Waterfront Clubhouse Lounges



From grand to intimate, the waterfront clubhouse is the ideal place to gather and unwind—from the morning's first coffee to a final, fire-side nightcap by one of several open-air fire pits.

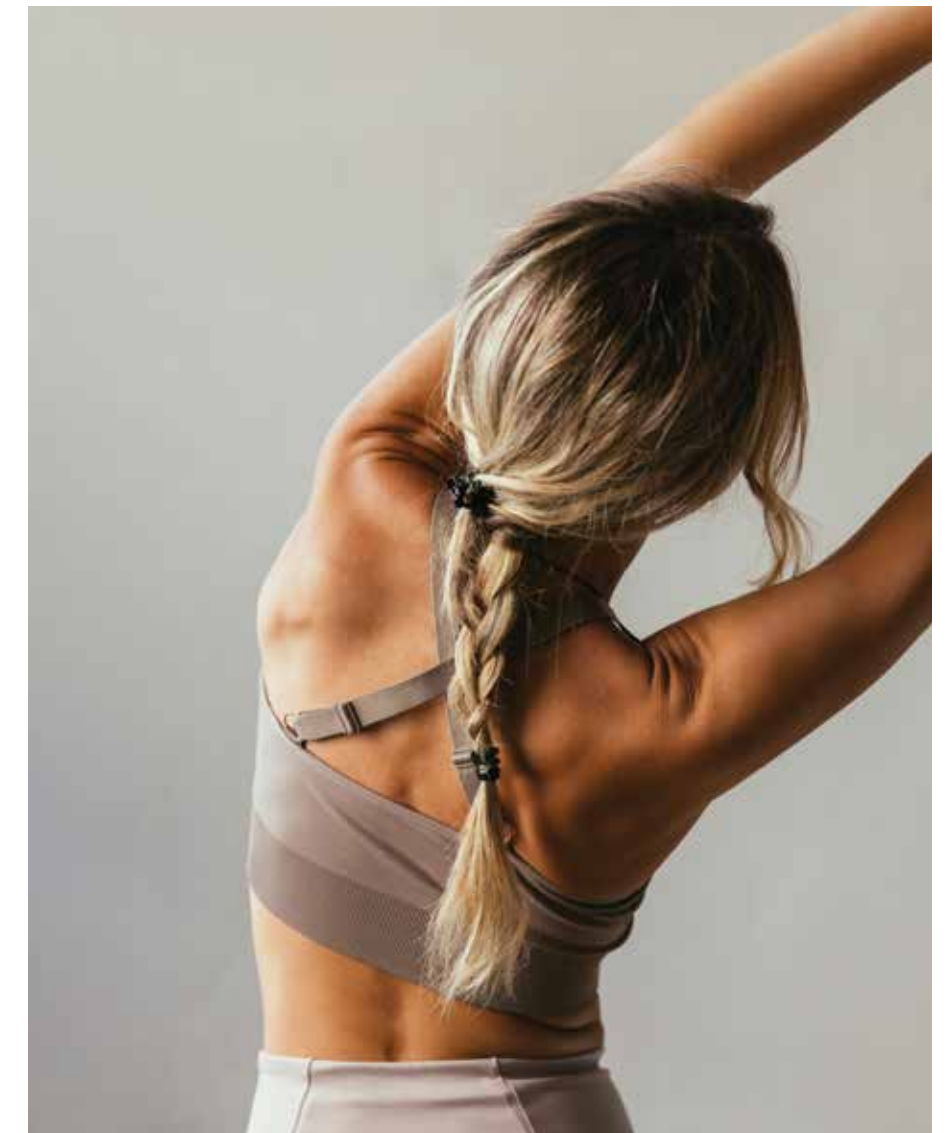


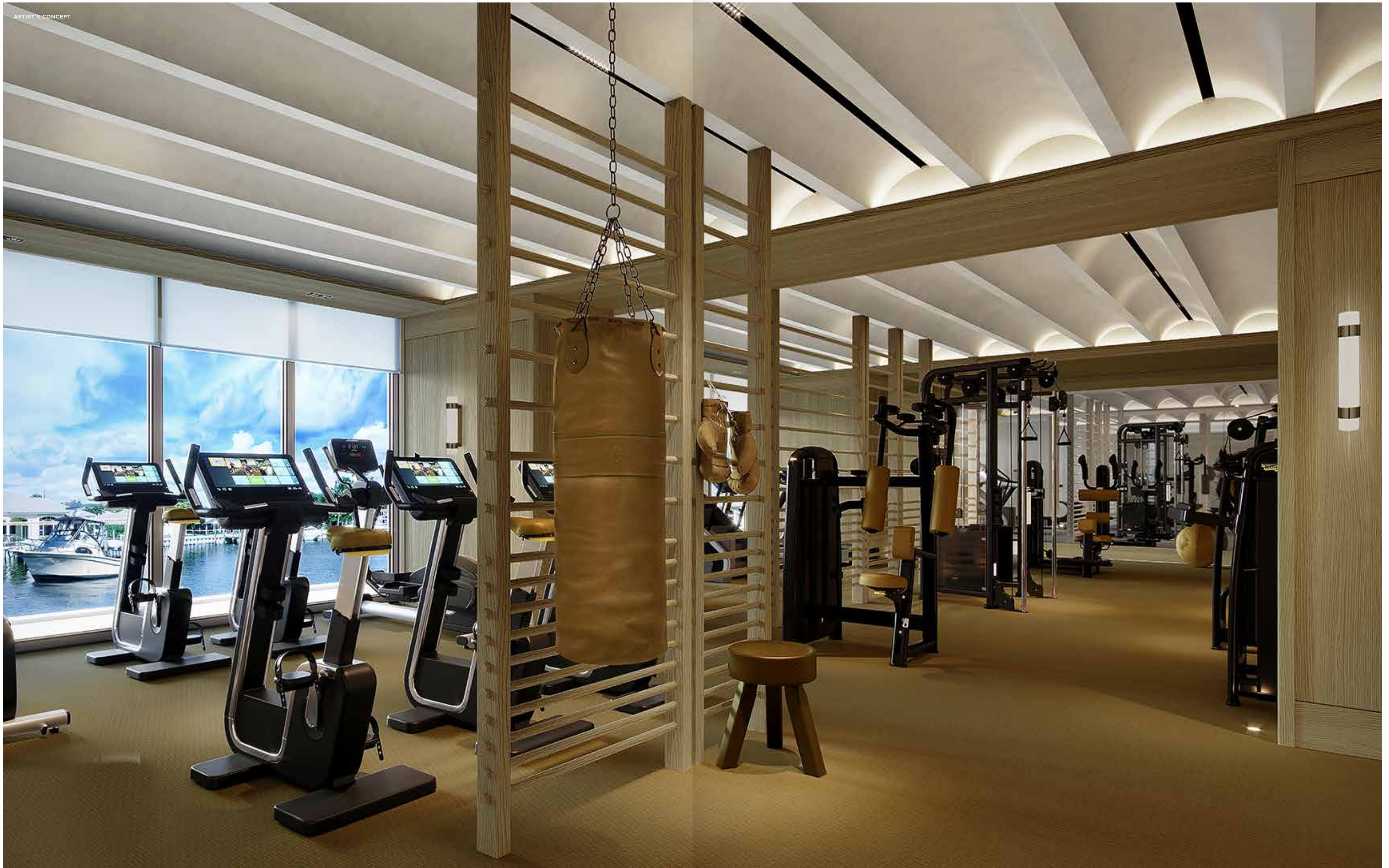
Lighthouse Lounge



Fitness Breakout Room

The state-of-the-art fitness center and dedicated fitness breakout room offer opportunities for mindful movement and functional fitness.





Fitness Center



Thoughtfully-designed wellness spaces that nurture mind, body and spirit, private spa treatment rooms are personal sanctuaries of self-care and well-being.

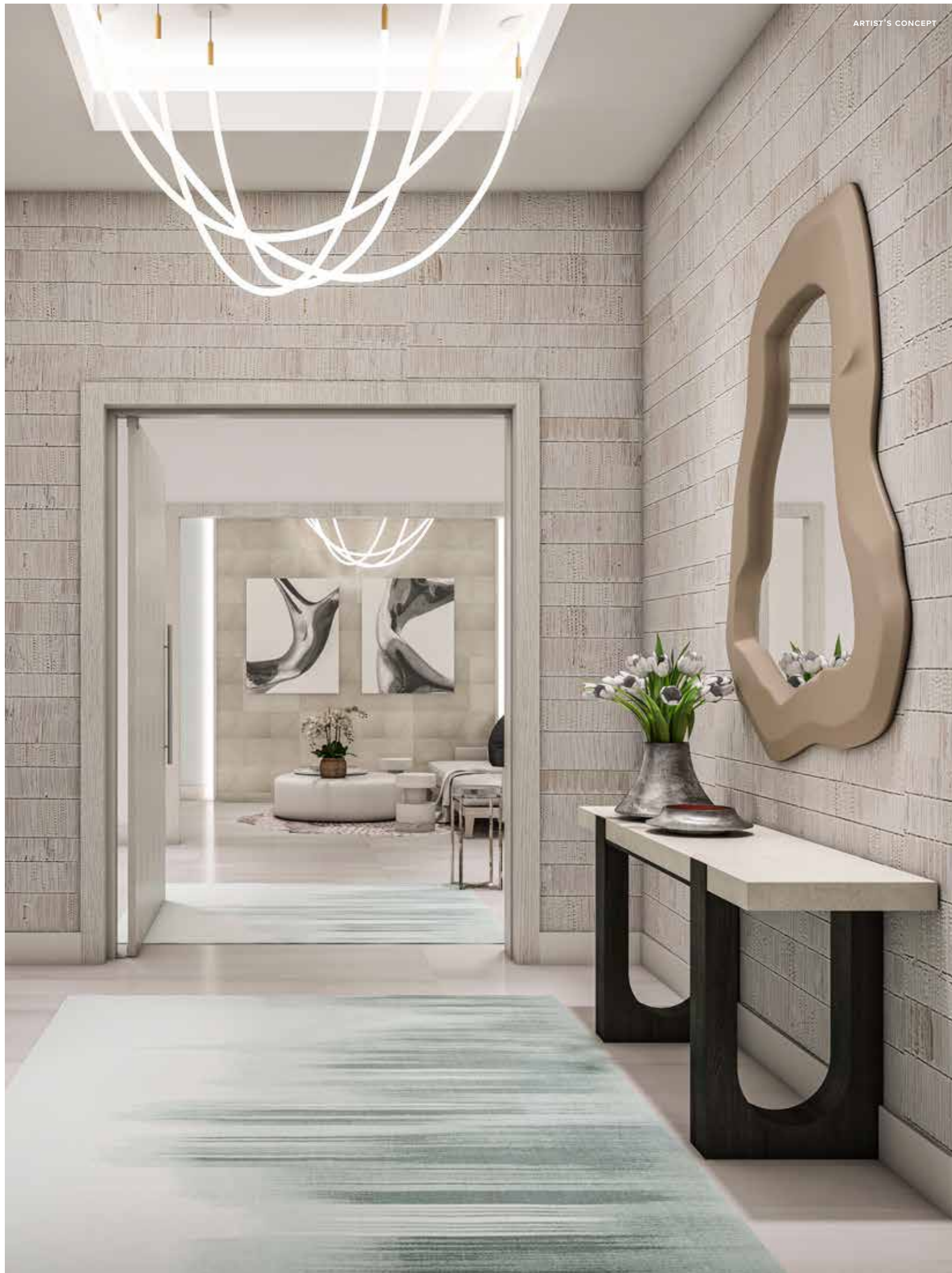
Spa Treatment Room



Framed by panoramic Intracoastal views, the infinity-edge pool reflects the tropical, natural surround, while full-service cabanas invite residents and their guests to linger and lounge.



ARTIST'S CONCEPT



ARTIST'S CONCEPT

THE ESTATE COLLECTION

GRAND SPACES FOR MODERN LIVING

OCEAN-INSPIRED ESTATE RESIDENCES

PALM BEACH GARDENS' HIGHEST EXPRESSION
OF WATERFRONT LIVING

Embraced by 180-degree Intracoastal views and a natural, coastal surround, impressively spacious three-, four- and five-bedroom residences with dens reveal an uncompromising quality of fit, finish and attention to detail. Featuring rich architectural embellishments, the latest amenities and carefully considered touches, interior spaces are impeccably curated, down to the finest. Set to raise expectations for well-appointed, waterfront living, here, ocean-inspired elegance reigns supreme.

Private elevator foyers feature controlled access to ensure the utmost in discretion.

Framed by panoramic Intracoastal views from expansive terraces, generously proportioned living spaces become the sun-bathed gathering spaces for family and friends to breathe deep.



GRACIOUS
PROPORTIONS,
FINE
FINISHES,
INTRACOASTAL
VIEWS &
OPEN-AIR
HIGH STYLE

OCEAN-INSPIRED ESTATE RESIDENCES
INTRODUCE A NEW WAVE OF APPOINTED LIVING
TO PALM BEACH GARDENS.



Open-concept kitchens with adjoining wet bars flow seamlessly into light-filled living spaces with commanding water views.



Open-concept kitchens with adjoining wet bars flow seamlessly into light-filled living spaces with commanding water views.

ARTIST'S CONCEPT



ARTIST'S CONCEPT

Floor-to-ceiling, triple-pane, impact-resistant glass doors and windows create a seamless transition between indoor and outdoor living while preserving an environment of quiet, sumptuous comfort.



ARTIST'S CONCEPT



ARTIST'S CONCEPT



ARTIST'S CONCEPT

CHEF-WORTHY KITCHENS

Clad in the finest finishes and a full suite of Sub-Zero® and Wolf® appliances featuring gas cooktops, open-concept kitchens take the joy of cooking to a magnificent, new level.



Featuring a palette of refined, natural finishes inspired by the soothing power of the sea, calm and craftsmanship pervade every detail of generously-proportioned owner's suites.

Outfitted with free-standing soaking tubs, glass-enclosed showers, European double-vanities and double walk-in closets, grand owner's suites are private sanctuaries of refinement and relaxation.



The property's unique waterfront site offers sweeping, 180-degree Intracoastal views, opening up balconies for an indoor-outdoor approach to living.



ARTIST'S CONCEPT



THE NEIGHBORHOOD

A SINGULAR SENSE OF PLACE

PALM BEACH GARDENS AT YOUR DOORSTEP

Minutes beyond the hurried rush of downtown West Palm Beach, The Ritz-Carlton Residences, Palm Beach Gardens sit like a crowning jewel along the shores of the Intracoastal Waterway. Surrounded by the world's finest professional golf courses, open-air waterfront dining, exclusive shopping emporiums, fresh markets and a cultivated landscape of natural wonder, this impressive assembly of the area's tropical riches conveys a singular status all its own that says: Here and nowhere else.

Another neighborhood exists beyond West Palm Beach—one that hums with relaxed, tropical culture, dockside destinations and local, artisanal cuisine. Surrounded by high-style eateries, gourmet markets, designer boutiques and the world’s finest golf clubs, Palm Beach Gardens invites residents to immerse themselves in a dazzling playground of coastal, leisure pursuits.



WATERFRONT DINING

The PGA Blvd corridor is known for culinary delights with over 100 restaurants in immediate proximity.

GOLF CAPITAL OF THE WORLD

With more than 100 golf courses in the Palm Beaches, the world’s best clubs are all found here. Lost Tree Village, Seminole Golf Club, Old Palm Golf Club, The Bear’s Club and PGA National are only minutes away.



A SHOPPER’S PARADISE

A who’s who of designer names, including Gucci, Louis Vuitton and Saks Fifth Avenue, can be found in the shops at The Gardens Mall as well as local area boutiques. The iconic shops of Worth Avenue and the charm of Palm Beach Island are a short drive away.



PEACEFUL BEACHES & NATURE

Mere minutes away, the Juno Beach Pier offers sunrise views, salt water fishing, and the very best of beach life. As part of the 17-acre Loggerhead Marine Life Center, visitors can explore sea turtle conservation or bask in the sun and surf.



EASE OF ACCESS

Voted among the top US airports by *Condé Nast Traveler* magazine, Palm Beach International Airport offers more than 200 daily nonstop flights connecting travelers with the Northeast, Canada and the Caribbean. The state-of-the-art, on-site FBO facilities ensure convenient and efficient arrival via private jet. The vibrant excitement of Ft. Lauderdale and Miami can be easily accessed via Brightline’s high-speed trains or through I-95’s direct highway connection.



THE IDEAL HOMEPORT

The private 29-slip marina including a dedicated day dock, provides direct ocean access for all residents—serving as a personal gateway to sport fishing, motor yachting, reef diving and all forms of offshore, aquatic adventure.



A VISIONARY TEAM

CREATIVE COLLABORATORS

COMING TOGETHER TO CREATE A DYNAMIC NEW BLUEPRINT FOR PALM BEACH GARDENS

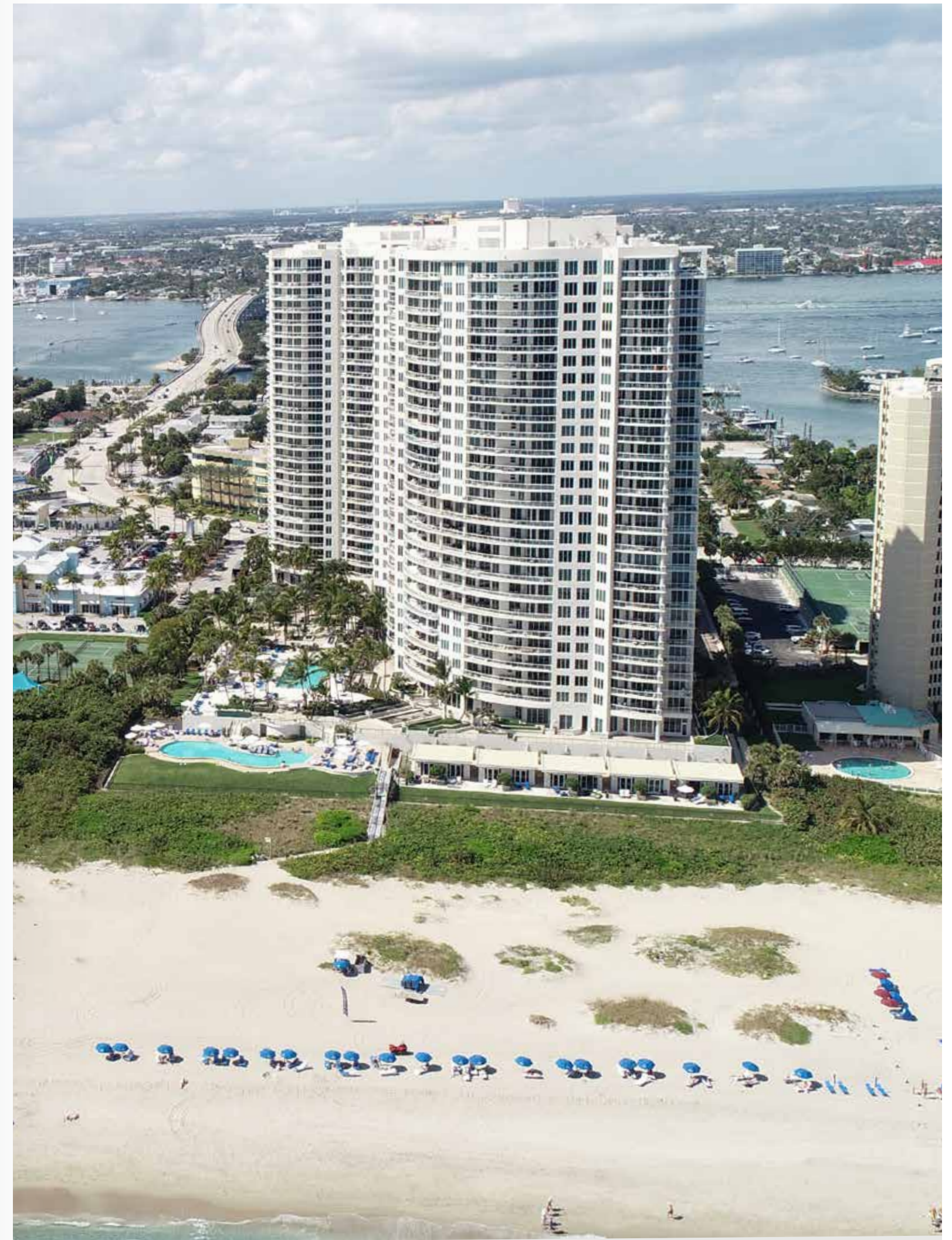


Daniel Catalfumo, CEO & Chairman, Catalfumo Companies

Catalfumo Companies DEVELOPMENT

Established in 1978 by CEO and Chairman Daniel Catalfumo, Catalfumo Companies have become the largest privately-owned development firm in Palm Beach County. Over more than forty years, Catalfumo has completed more than 75 million square feet of new development with an aggregate contract value in excess of \$8 billion. With a distinguished portfolio of office, retail, civic, multi-family residential, educational and hospitality projects—including West Palm Beach City Hall, Marriott Ocean Pointe and The Ritz-Carlton Residences, Singer Island—Catalfumo Companies adhere to the development credo of “quality from the ground up.”

For large-scale projects that impact the growth of cities, Catalfumo has brought a quality of craftsmanship and thinking that reflects the company’s founding, from which it has never wavered. Sought after by national corporations and government entities, Catalfumo Companies continue to deliver landmark projects that shape the South Florida skyline.



The Ritz-Carlton Residences, Singer Island

Susurrus

HOSPITALITY INTERIOR DESIGN

A globally-recognized boutique design firm specializing in luxury hospitality interiors, Susurrus is dedicated to curating artful and immersive environments. Founded by award-winning, Spanish architect Cristian Piñedo, the firm has more than 20 years of experience leading international projects in Kyoto, London, Goa, Ibiza, Miami and the Galapagos. Adhering to a design ethos of sublime discretion for luxury hoteliers, clients include The Ritz-Carlton, Four Seasons and St. Regis hotels. Susurrus' most recent work includes The Ritz-Carlton, Nomad, which opened in New York City to celebrated acclaim.

Professional honors for the firm include the prestigious HD Award from *Hospitality Design* magazine, the Gold Key Award for Excellence in Hospitality Design, as well as the honor of serving as a jury member for the prestigious AHEAD Awards.

Spina O'Rourke + Partners

ARCHITECTURE

With a foundation of enduring client relationships, Spina O'Rourke + Partners is a full-service architectural design firm serving the needs of its clients for more than forty years. Established in West Palm Beach in 1975, the firm has adapted to embrace the industry's technological advancements to build a diversified portfolio of award-winning commercial, residential, hospitality and civic projects throughout South Florida and the United States.

Driven by a deep understanding of architectural design and experiential programming for some of North America's top private clubs and celebrated hospitality destinations, Spina O'Rourke delivers purpose-driven design, serving the lifestyle needs of a discerning, guest clientele.

Decorators Unlimited

RESIDENTIAL INTERIOR DESIGN

Established in 1985 by President and CEO, Bob Martin, Decorators Unlimited have created some of the finest interiors for many of South Florida's most exceptional, private residences. For nearly five decades, clients have entrusted an expert team of talented tradespeople and experienced collaborators to create appointed living spaces that infuse architectural artistry and interior design with master craftsmanship and sumptuous detail.

The firm's vast, in-house, two-story design library features an array of fine materials, furnishings, lighting, wall covering, flooring and fabrics—offering a fully-integrated design approach that ensures precise and painstaking attention to detail. With more than 3,000 completed projects, Decorators Unlimited is a trusted leader devoted to the design of timeless interiors that ensure the highest level of functionality, elegance and enduring appeal.



THE RITZ-CARLTON RESIDENCES, PALM BEACH GARDENS ARE NOT OWNED, DEVELOPED OR SOLD BY MARRIOTT INTERNATIONAL, INC. OR ITS AFFILIATES ("MARRIOTT"). DMBH RESIDENTIAL INVESTMENT, LLC USES THE RITZ-CARLTON MARKS UNDER A LICENSE FROM MARRIOTT, WHICH HAS NOT CONFIRMED THE ACCURACY OF ANY STATEMENTS OR REPRESENTATIONS MADE ABOUT THE PROJECT.

ORAL REPRESENTATIONS CANNOT BE RELIED UPON AS CORRECTLY STATING THE REPRESENTATIONS OF THE DEVELOPER. FOR CORRECT REPRESENTATIONS, MAKE REFERENCE TO THIS BROCHURE AND TO THE DOCUMENTS REQUIRED BY SECTION 718.503, FLORIDA STATUTES, TO BE FURNISHED BY A DEVELOPER TO A BUYER OR LESSEE. THIS OFFERING IS MADE ONLY BY THE PROSPECTUS FOR THE CONDOMINIUM AND NO STATEMENT SHOULD BE RELIED UPON IF NOT MADE IN THE PROSPECTUS. THIS IS NOT AN OFFER TO SELL, OR SOLICITATION OF OFFERS TO BUY, THE CONDOMINIUM UNITS IN STATES WHERE SUCH OFFER OR SOLICITATION CANNOT BE MADE. PRICES, PLANS AND SPECIFICATIONS ARE SUBJECT TO CHANGE WITHOUT NOTICE. ALL DIMENSIONS ARE APPROXIMATE AND SUBJECT TO CHANGE IN ACCORDANCE WITH THE AGREEMENT FOR SALE.

Stated dimensions are measured to the exterior boundaries of the exterior walls and the centerline of interior demising walls and in fact vary from the dimensions that would be determined by using the description and definition of the "Unit" set forth in the Declaration (which generally only includes the interior airspace between the perimeter walls and excludes interior structural components). Additionally, measurements of rooms set forth on any floor plan are generally taken at the greatest points of each given room (as if the room were a perfect rectangle), without regard for any cutouts. Accordingly, the area of the actual room will typically be smaller than the product obtained by multiplying the stated length times width. All dimensions are approximate, and all floor plans and development plans are subject to change. Nothing herein shall constitute an offer to sell, or a solicitation of offers to buy, in states in which such offers or solicitations cannot be made. The sketches, renderings, graphic materials, plans, specifications, terms, conditions and statements contained in this brochure are proposed only, and the Developer reserves the right to modify, revise or withdraw any or all of same in its sole discretion and without prior notice. All improvements, designs and construction are subject to first obtaining the appropriate federal, state and local permits and approvals for same. These drawings are conceptual only and are for the convenience of reference. They should not be relied upon as representations, express or implied, of the final detail of the residences. The developer expressly reserves the right to make modifications, revisions, and changes it deems desirable in its sole and absolute discretion. All depictions of appliances, counters, soffits, floor coverings and other matters of detail are conceptual only and are not necessarily included in each Unit. Consult your Agreement and the Prospectus for the items included with the Unit. Dimensions and square footage are approximate and may vary with actual construction. All fixtures and items of finish and decoration are for display only and are not to be included with the unit. Consult the prospectus for a description of those features which are to be included in the units. The features, plans and specifications described above are proposed only, and the Developer reserves the right to modify, revise or withdraw any or all of same in its sole discretion and without prior notice. Without limiting the generality of the foregoing, Developer reserves the right to substitute any of the foregoing with items of similar or better value, in Developer's opinion. The photographs contained in this brochure have been taken off-site and are merely intended as illustrations of the activities and concepts depicted therein.

THE COMPLETE OFFERING TERMS ARE IN A CPS-12 APPLICATION AVAILABLE FROM THE OFFEROR. FILE NO. CP25-0075

