



1238 28TH STREET, NW

WASHINGTON, DC 20007



THE
MIKE AUBREY
GROUP

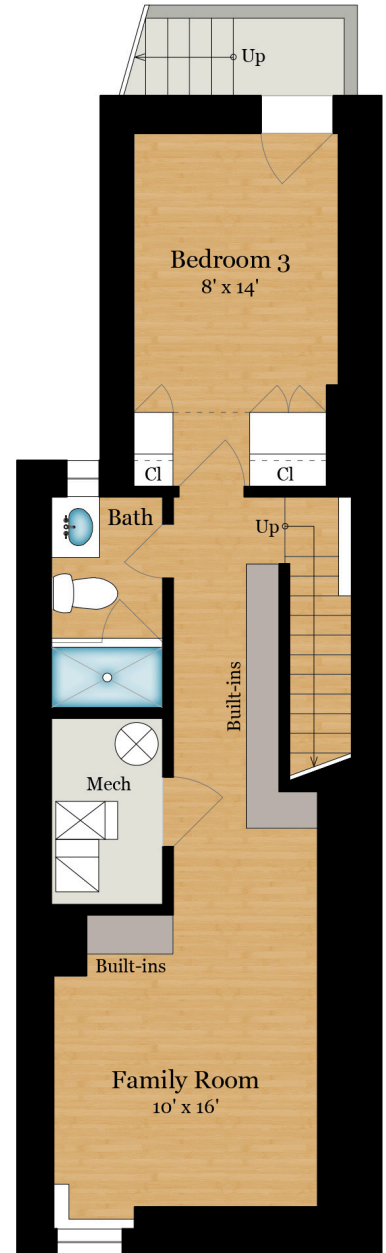
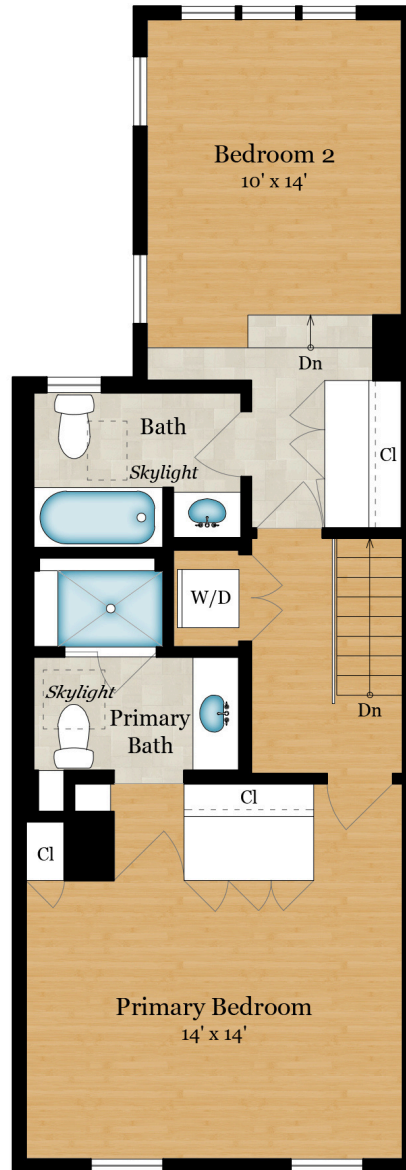
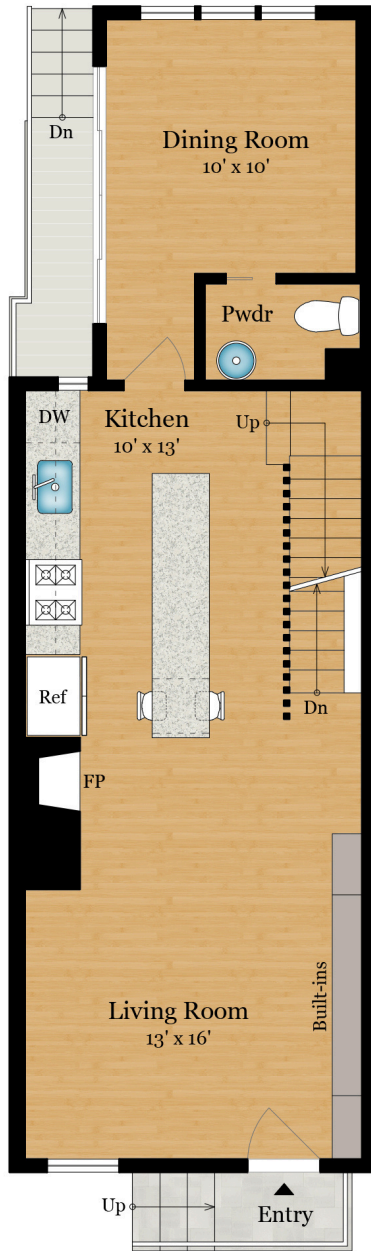
Total Finished Square Footage: 1,714 SQ FT

Above-Grade: 1,185 SQ FT Below-Grade: 529 SQ FT

Plus 39 SQ FT Mech Room on Lower Level

Calculated per ANSI Standard Z765-2003.

* Total Finished & Unfinished Square Footage: 1,753 SQ FT



Rendering by Arcdimension
All measurements are approximate. While deemed reliable, no information on these floor plans should be relied upon without independent verification.

Presented by Maria Aubrey, The Mike Aubrey Group
Tel: 301.873.9807
Email: maria@mikeaubrey.com