

1238 28TH STREET, NW

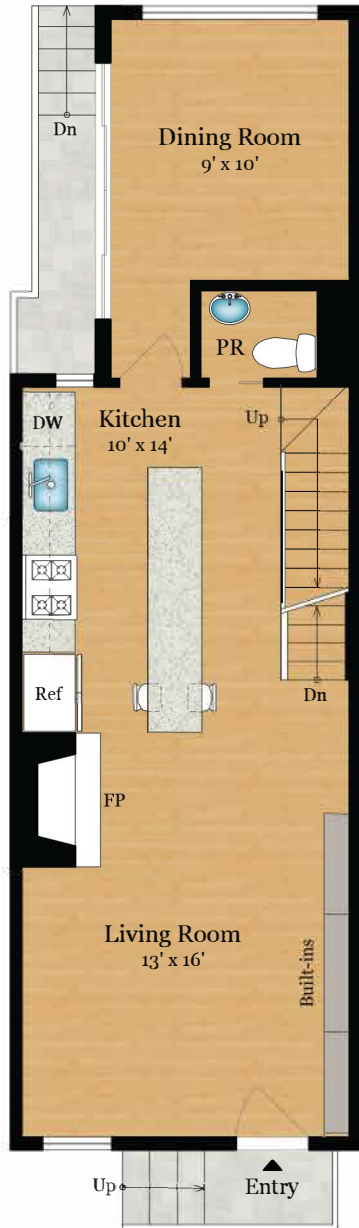
WASHINGTON, DC 20007

Total Finished

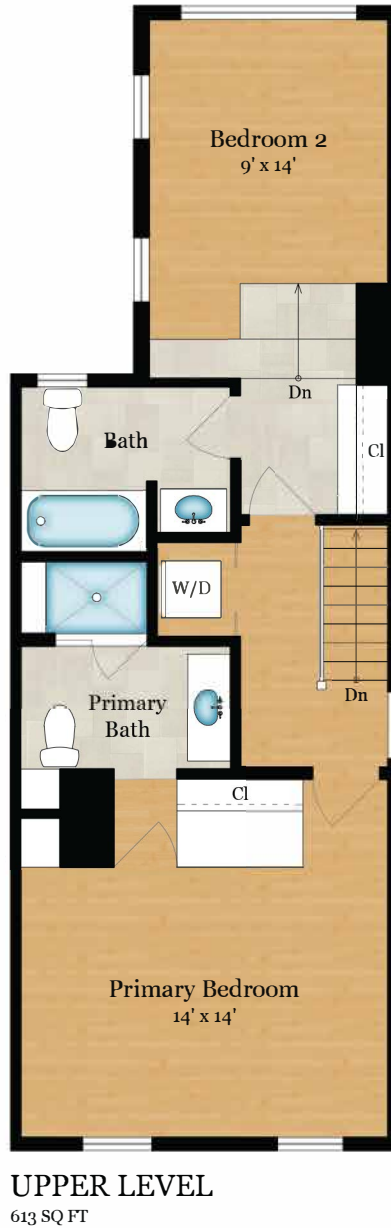
Square Footage: 1,743 SQ FT

Above-Grade: 1,181 SQ FT Below-Grade: 562 SQ FT

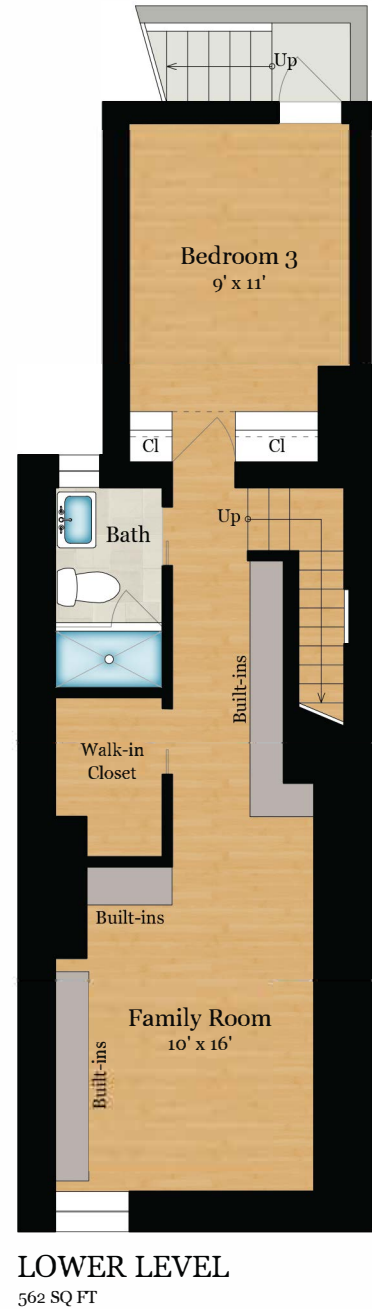
Calculated per ANSI Standard Z765-2003.



MAIN LEVEL
568 SQ FT



UPPER LEVEL
613 SQ FT



LOWER LEVEL
562 SQ FT

