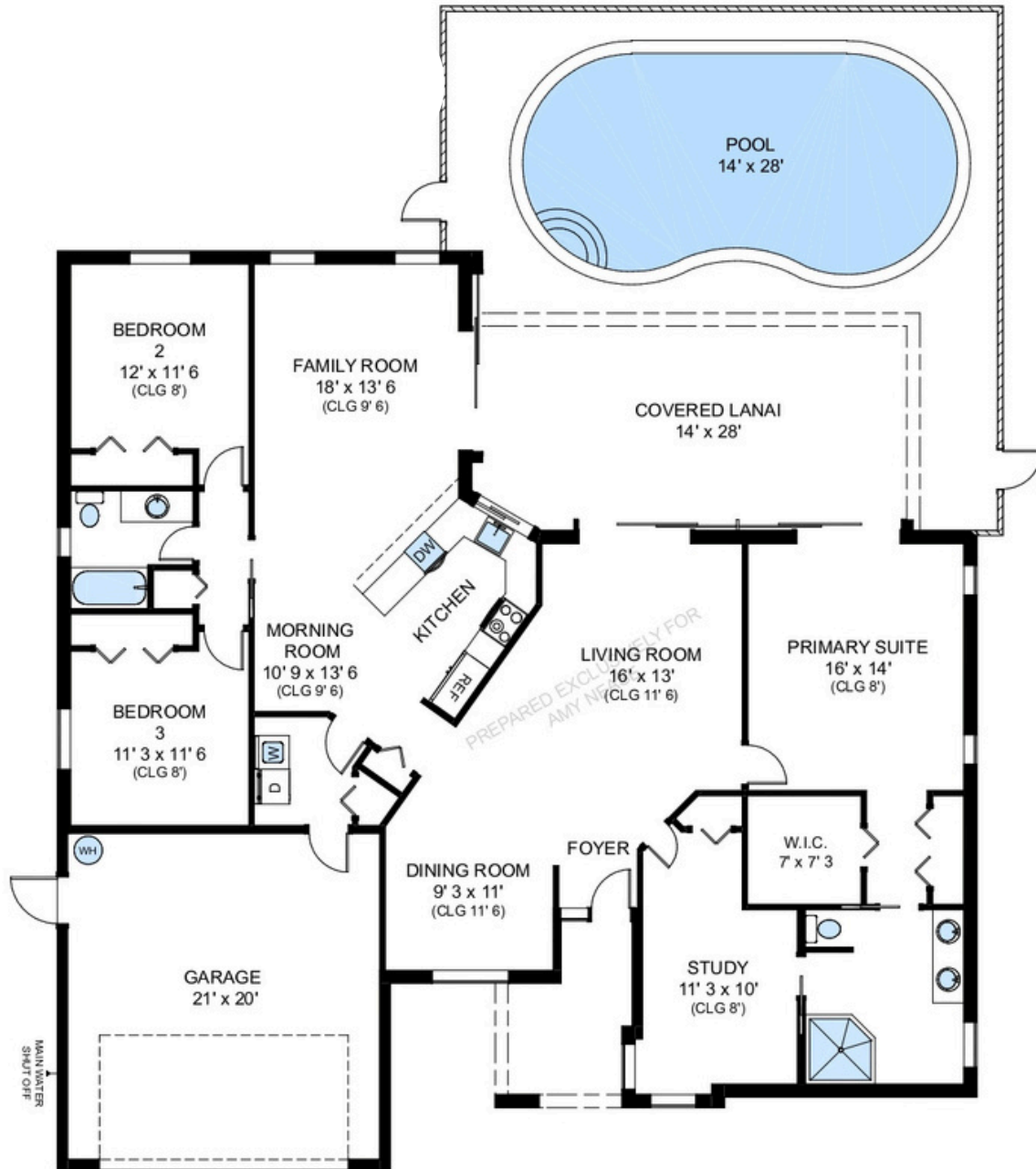


10340 Regent Circle



Premier

Sotheby's
INTERNATIONAL REALTY

TOTAL UNDER AIR	2163 sq. ft.
Garage	458 sq. ft.
Covered Entry	86 sq. ft.
Covered Lanai	398 sq. ft.

TOTAL UNDER ROOF	3105 sq. ft.
Lanai/Pool	781 sq. ft.

TOTAL AREA	3886 sq. ft.
------------	--------------



Prepared exclusively for Amy Nease

©2026 Precision Floorplans, Inc. This document is the copyright property of Precision Floorplans, Inc. Any other user may not copy, modify, reproduce, publish, distribute, display, or transmit for commercial, nonprofit or public purposes all or any portion of this document except to the extent authorized by Precision Floorplans, Inc. (239) 598-9411/precisionfloorplans@earthlink.net Copyright infringement (Title 17 Chapter 5 Section 501) in the U.S. Federal Court.
ALL INFORMATION IS DEEMED RELIABLE NOT GUARANTEED