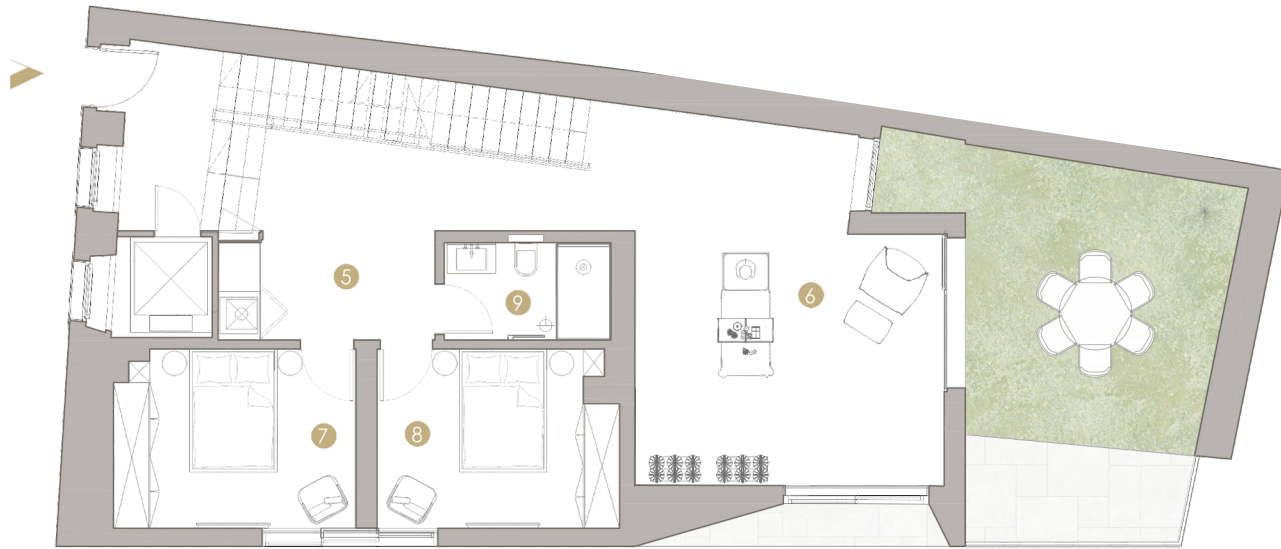
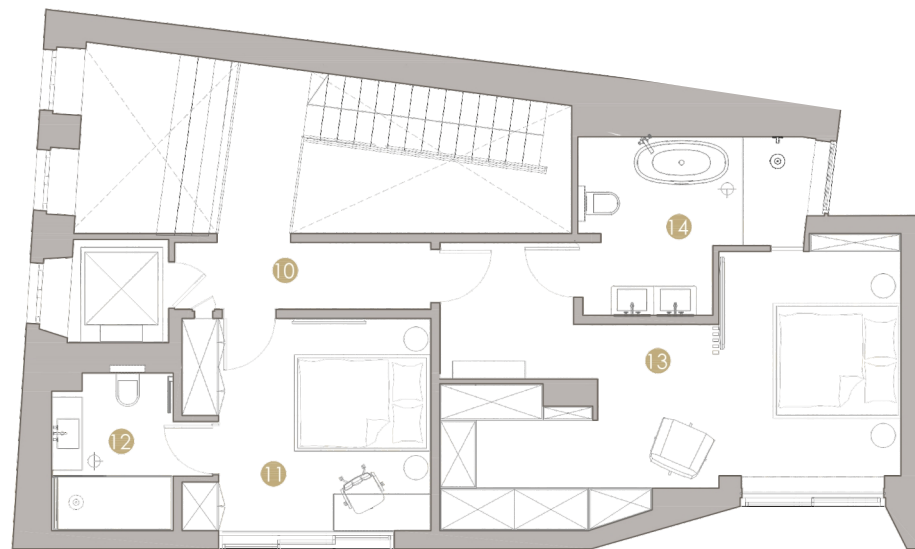


LEVEL 2



LEVEL 3



CASA
SOLAR

TOWNHOUSE
THREE-LEVEL APARTMENT

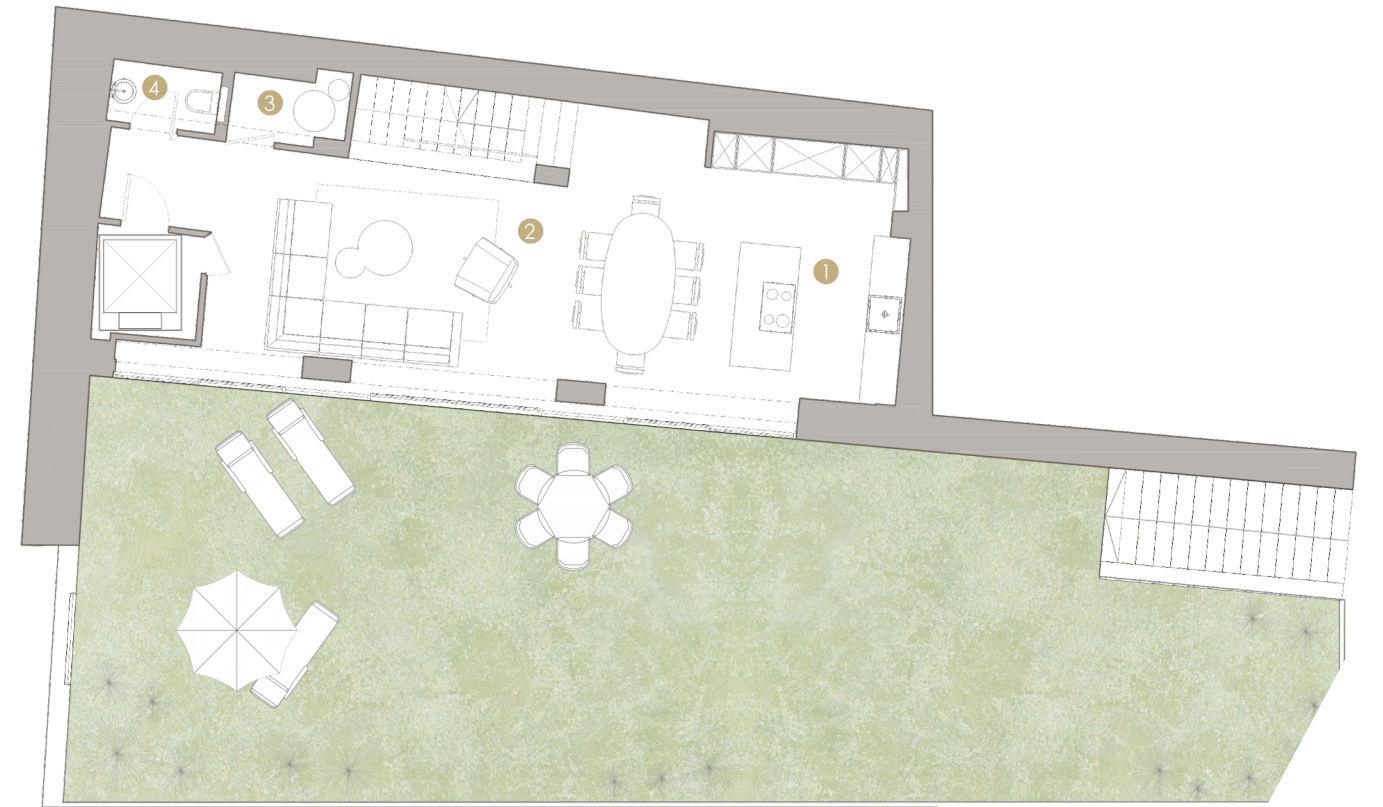
TOTAL GROSS AREA
335,44 m²

PRIVATE GARDEN
132,67 m²

3 UNDERGROUND
PARKING SPOTS

NO.	ROOM	USABLE AREA [M2]
1ST LEVEL		
1	KITCHEN	14,28
2	LIVING ROOM	37,33
3	TECHNICAL ROOM	2,10
4	TOILET	1,83
2ND LEVEL		
5	HALL	21,78
6	EXCERCISE ROOM	27,86
7	BEDROOM	11,59
8	BEDROOM	11,42
9	BATHROOM	4,40
3RD LEVEL		
10	CORRIDOR	8,16
11	BEDROOM	13,69
12	BATHROOM	5,63
13	BEDROOM	28,64
14	BATHROOM	9,25

LEVEL 1



The information, images and areas contained in the plans are merely indicative and may, within the scope of the licensing procedure and of the construction works, notably for administrative, technical, commercial, or legal reasons, be subject to modifications, alterations and/or adjustments without prior notice, and therefore have no contractual value.