

LEVEL 2



LEVEL 3



CASA BRISA

TOWNHOUSE
THREE-LEVEL APARTMENT

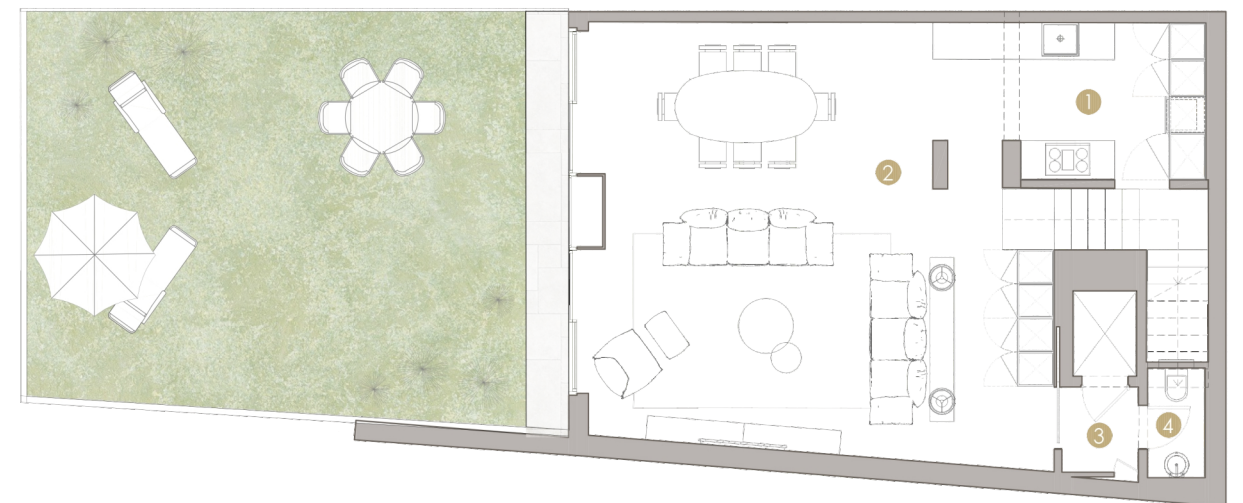
TOTAL GROSS AREA
306,51 m²

PRIVATE GARDEN
60,44 m²

2 UNDERGROUND
PARKING SPOTS

	NO.	ROOM	USABLE AREA [M2]
1ST LEVEL	1	KITCHEN	10,68
	2	LIVING ROOM	48,47
	3	CORRIDOR	1,75
	4	TOILET	1,70
2ND LEVEL	5	HALL	9,11
	6	CORRIDOR	13,28
	7	OFFICE	5,99
	8	BEDROOM	14,43
	9	BATHROOM	4,55
	10	BEDROOM	15,27
	11	BATHROOM	4,46
3RD LEVEL	12	CORRIDOR	6,67
	13	BEDROOM	15,39
	14	BATHROOM	4,41
	15	BEDROOM	27,61
	16	BATHROOM	8,80

LEVEL 1



The information, images and areas contained in the plans are merely indicative and may, within the scope of the licensing procedure and of the construction works, notably for administrative, technical, commercial, or legal reasons, be subject to modifications, alterations and/or adjustments without prior notice, and therefore have no contractual value.