

SAVOY RESIDENCE

*D'Avila*

# A timeless haven





# A remarkable legacy in the heart of Lisbon

Savoy Residence is a beacon for excellence and sophistication. For the first time in downtown Lisbon, our brand presents a new construction that combines quality with elegant, timeless lines. The outcome is an unparalleled living experience.

The luxury development **Savoy Residence | D'Ávila** welcomes those seeking an exceptional residential refuge in Lisbon. It is also an excellent opportunity for those looking to invest in the real estate market in the Portuguese capital.





# The essence of your dream refuge

Lisbon's distinctive light, blended with the inviting **climate** and unique **location**, sets a charming, serene atmosphere. The city captivates with its genuine soul and presents plenty of offers in different domains: culture, nature, leisure, services, and well-being.

With this **new construction**, Savoy Residence | D'Ávila introduces a new concept of luxury and elegance in Avenidas Novas, one of Lisbon's most prestigious neighbourhoods, further elevating the city's real estate market.

The development is set in an area rich with landmarks, close to the iconic Calouste Gulbenkian Foundation Museum and its enchanting gardens. Saldanha's vibrant business and commercial hub, with its symbolic metro station and Campo Pequeno's cultural event venue, are also nearby.

The building stands as an icon of good taste and sophistication, the ideal refuge for a distinctive lifestyle.



# The artistic nature of elegant cosiness

In Savoy Residence's debut in Lisbon, the **Savoy Residence | D'Ávila** harmonises **tradition** and **modernity** with **luxury, elegance, and quality**.

The architecture and interior design project is by the studio **Frederico Valsassina Arquitectos**, which is masterful at combining timeless forms with distinct materials and natural light.

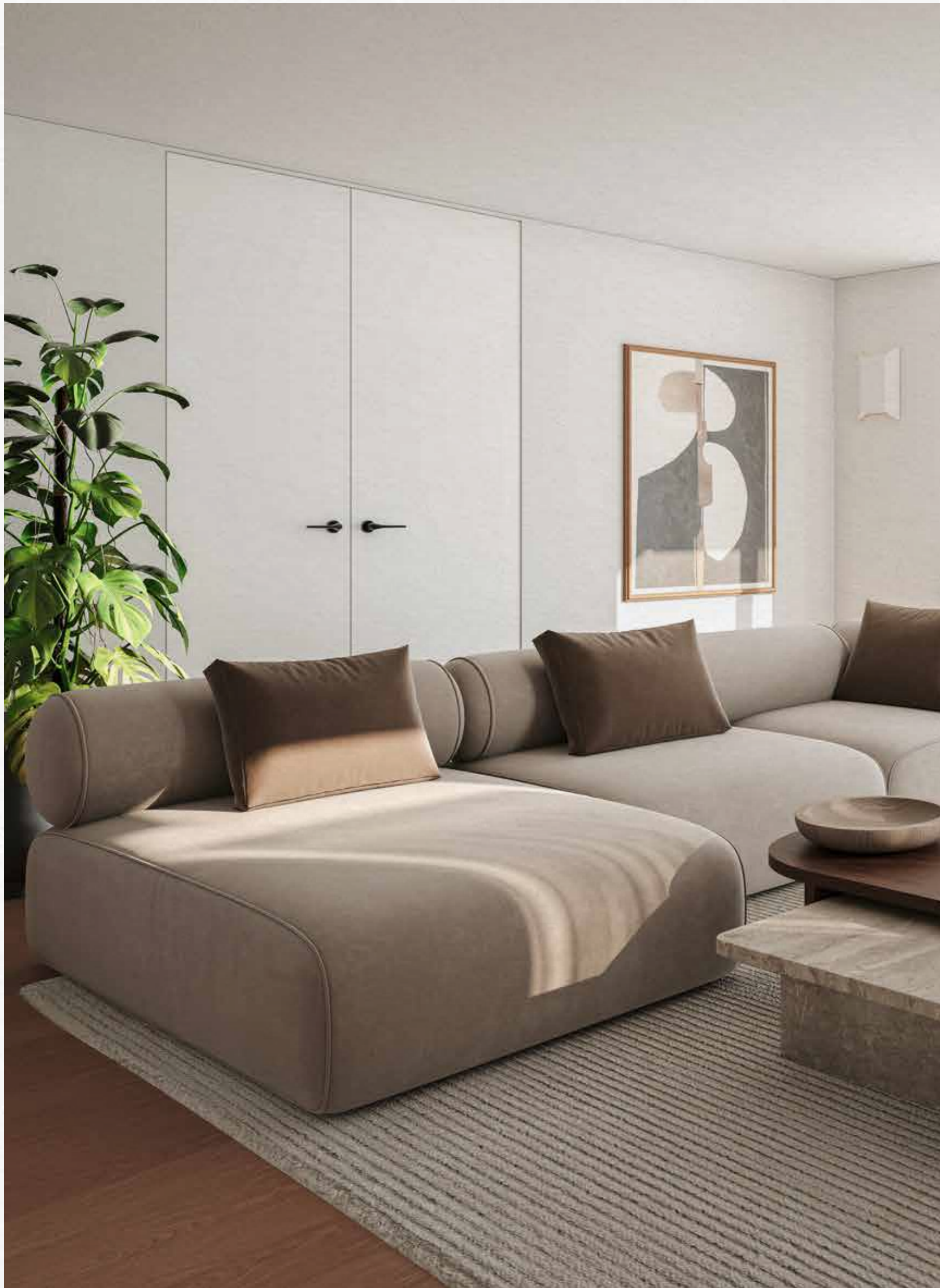
*"Simplicity illuminates a room and transforms the air in living areas."*

Marta Valsassina

The complex pursuit of **sophistication in simplicity**, both exterior and interior, has resulted in a state-of-the-art project with straight lines and sharp angles. **Savoy Residence | D'Ávila** excels in **prestigious architecture, exclusive interior design, quality finishes, and luxurious amenities**.

The **meticulous attention to detail** in every aspect of the development reflects a **hotel-inspired luxury experience**, a hallmark feature of Savoy Residence projects.







# The timeless sophistication you seek

**Savoy Residence | D'Ávila** stands as a monument in the heart of Lisbon. The property has significant potential to endure over time and is **ideal for housing** or a secure **investment opportunity** in one of the city's most profitable areas.

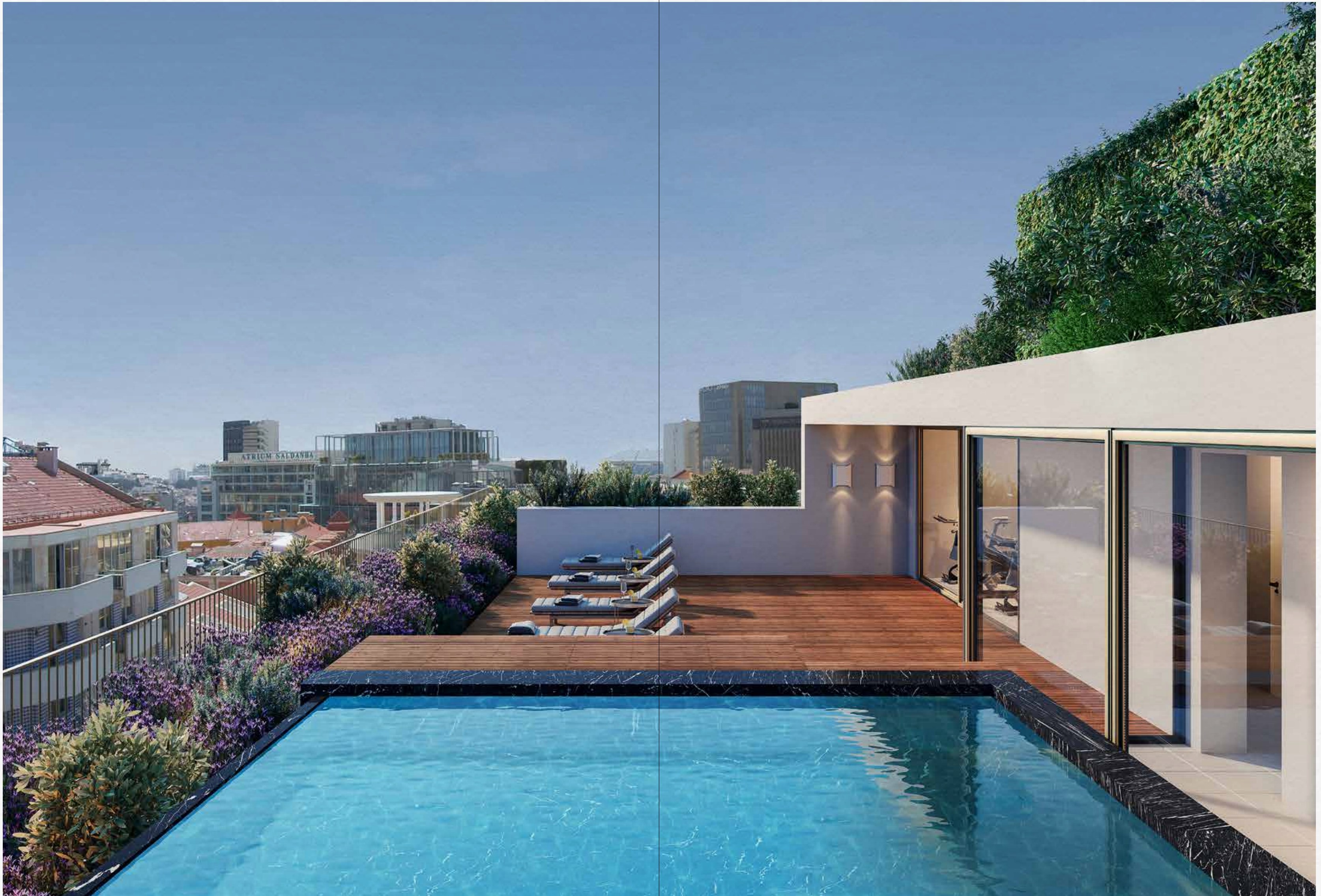
There are 59 apartments, ranging from studios to three-bedroom units, carefully designed for maximum comfort. This development stands out for its sophistication and elegance, showcasing meticulously thought-out details and top-quality materials.

All rooms, designed as suites, ensure total comfort and privacy. The balconies and large windows guarantee abundant natural light and open views over two of the city's most iconic avenues, Avenida Duque de Ávila and Avenida 5 de Outubro.

The building's rooftop provides a unique experience of luxury and refinement, reminiscent of a stay at one of the prestigious Savoy Signature hotels. It features a communal pool, solarium, gym, and sauna. The lush gardens and green areas, a signature of our brand, are present throughout the development, creating a harmonious integration of nature with the sophisticated environment.

As a backdrop, you can enjoy a stunning panoramic view that stretches from the majestic Cristo-Rei to the charming Serra de Sintra.

This development has also been designed with a solid commitment to sustainability, combining innovative energy efficiency and comfort solutions.



# Invest in a daily quality experience

**High-quality finishes** with meticulously selected details ensure the highest luxury and comfort standards.

**Fully equipped apartments** with state-of-the-art appliances, air conditioning, and smart home systems.

**Sustainable solutions** such as heat pumps, photovoltaic panels, and thermal-acoustic insulation.

**Eco-friendly parking** with all slots prepared for electric vehicle charging.

**Cutting-edge technology** with smart home systems and intelligent access control.

**Security** with video intercom and surveillance.

**Access to Savoy Signature benefits**, where you can enjoy exclusive perks and unique experiences across our hotel collection.







# Comfort and lifestyle with a hotel feeling

**Savoy Residence | D'Ávila** adapts to everyone's pace, whatever the lifestyle.

We have shaped timeless sophistication, considering those with **demanding daily routines** and those with a **flexible lifestyle**.

**Savoy Residence | D'Ávila** apartments offer you:

- . privacy, comfort, and security
- . central and select location
- . high-quality finishes
- . integrated outdoor space for quality of life
- . stunning views over Lisbon
- . easy access to leisure and wellness activities
- . a hotel-inspired luxury experience

# Cosmopolitan way of life



**59**  
apartments



**Studios to  
3-bedroom**  
apartments



**5**  
comercial units



**11**  
floors



Eco-friendly  
parking



Gardens



Rooftop with  
leisure areas and  
panoramic views



Communal  
pool



Solarium



Gym



Sauna





# Savoy Residence benefits



Savoy Residence is crafted to meet the highest aspirations in terms of sophistication, quality, and harmony.

Our projects extend beyond mere construction, providing **access to an array of exclusive amenities and services from the Savoy Signature hotel collection**, an icon of hospitality in Madeira Island since 1912.

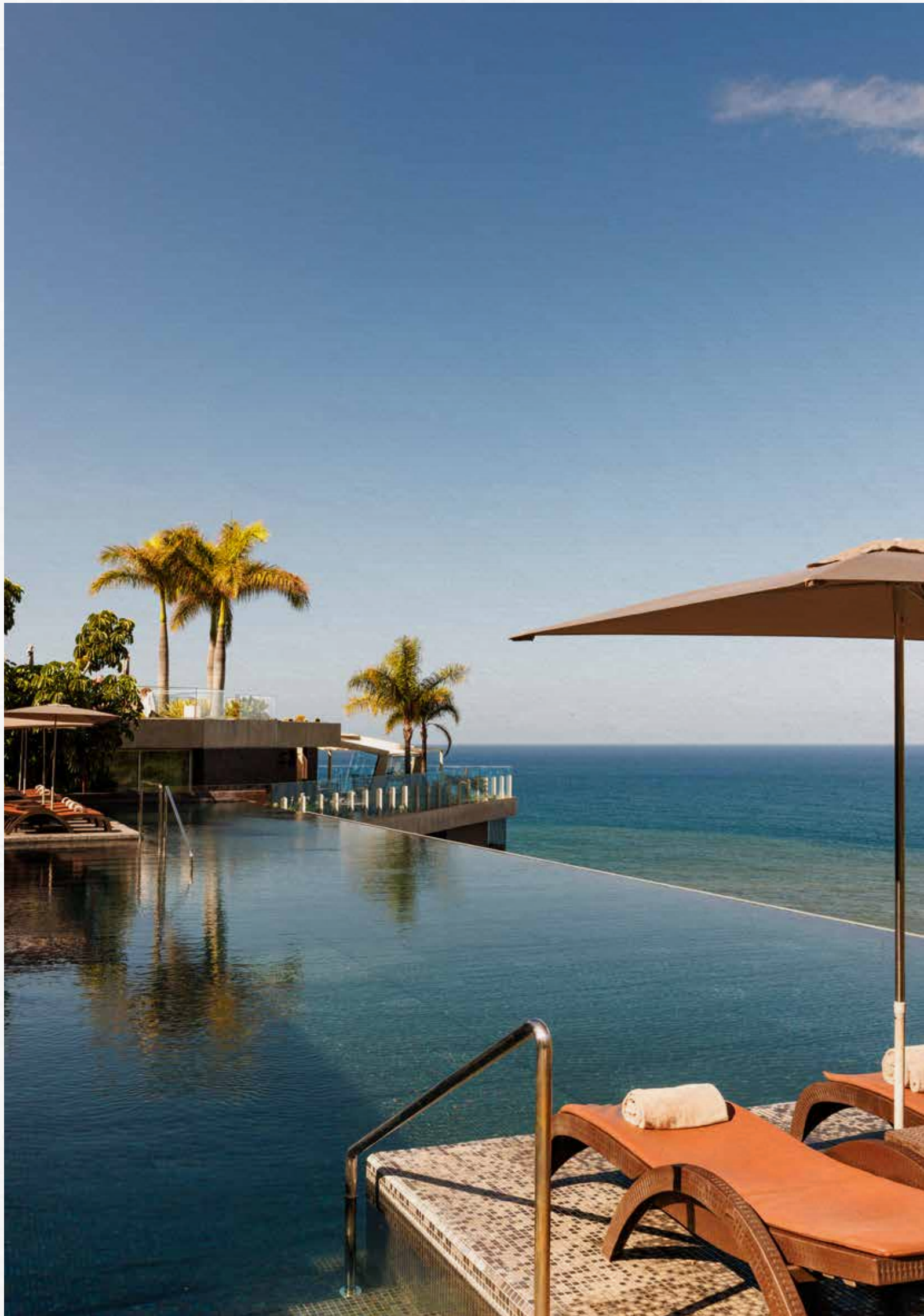
**Discounts on stays** at the Savoy Signature collection (subject to availability) and other special perks at the brand's hotels.

**Complimentary access** to services and open areas of the Savoy Signature hotel collection.

**Invitations to exclusive experiences and events** within the Savoy Signature collection.

**Virtual concierge services:** personalised assistance in travel planning, including custom itineraries, activity reservations, and access to exclusive experiences at hotel destinations.

**Discounted transfers** and complimentary access to the daily shuttle between Calheta and Funchal for guests of Savoy Signature hotels.



# Savoy Residence, an archetype of luxury and exclusivity

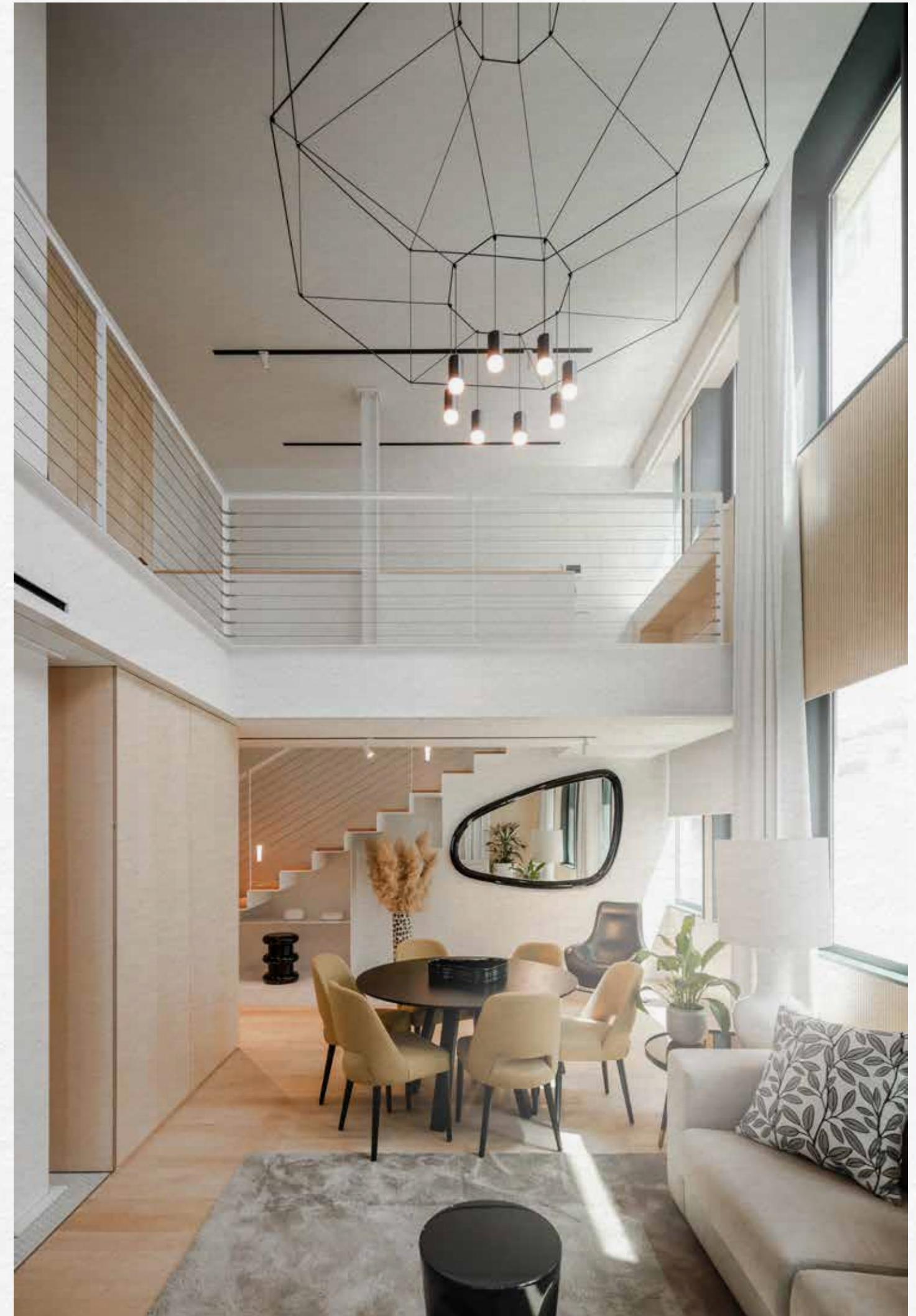
Established in 2019 in Madeira Island, Savoy Residence epitomises a high-end real estate concept marked by sophistication, modernity, and timeless elegance.

The brand's residential projects offer exclusive services linked to the Savoy Signature hotel collection and are supported by the construction expertise of a market-leading company with over 43 years of knowledge.

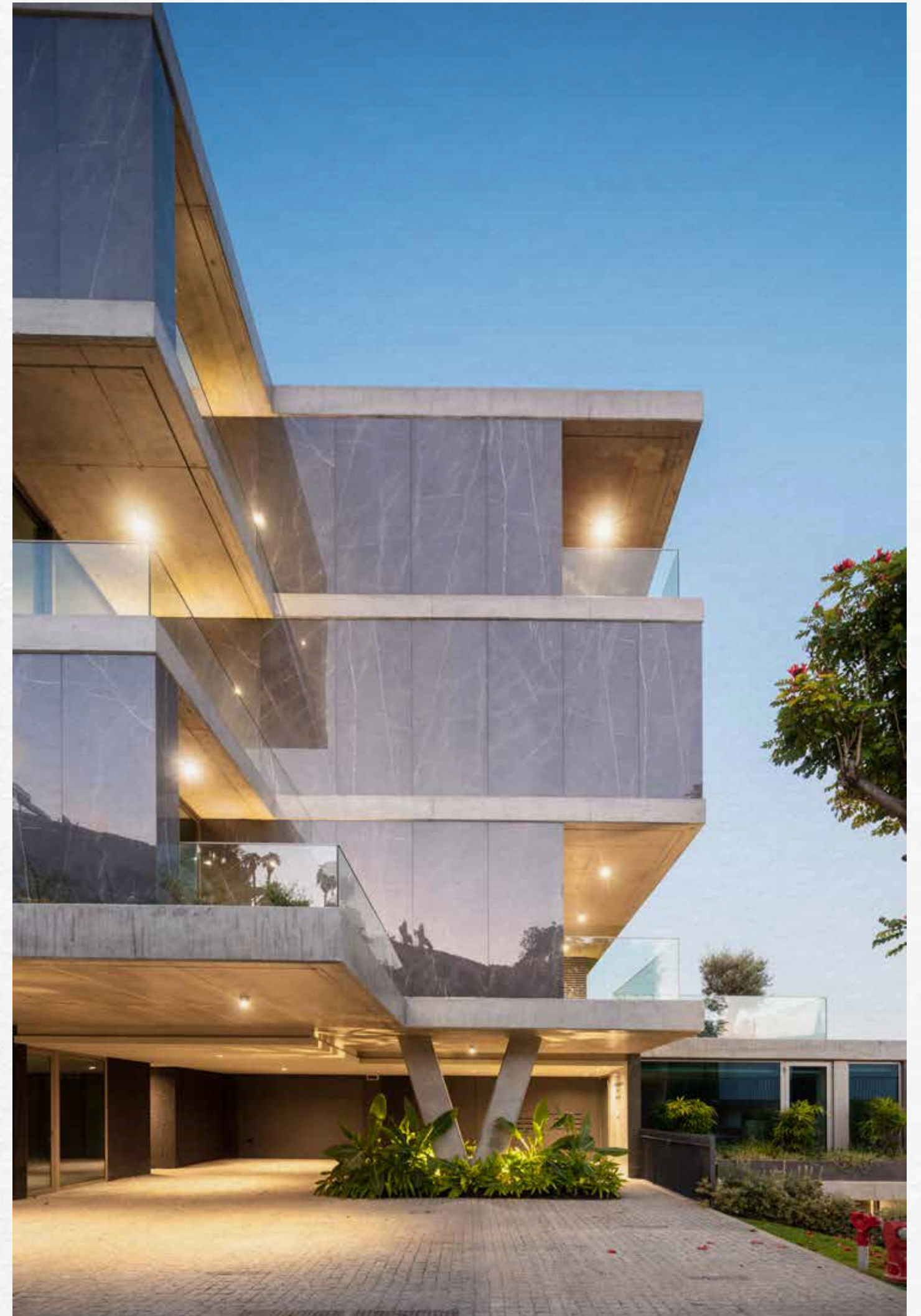
Savoy Residence seamlessly combines housing with the quality, lifestyle, and services of a luxury hotel, blending modernity and exclusivity.

The brand proudly features three luxury developments in Madeira Island: Savoy Residence | Monumentalis, Savoy Residence | Insular, and Savoy Residence | Casa Branca. The projects stand out for their prime locations in Funchal and unique features.

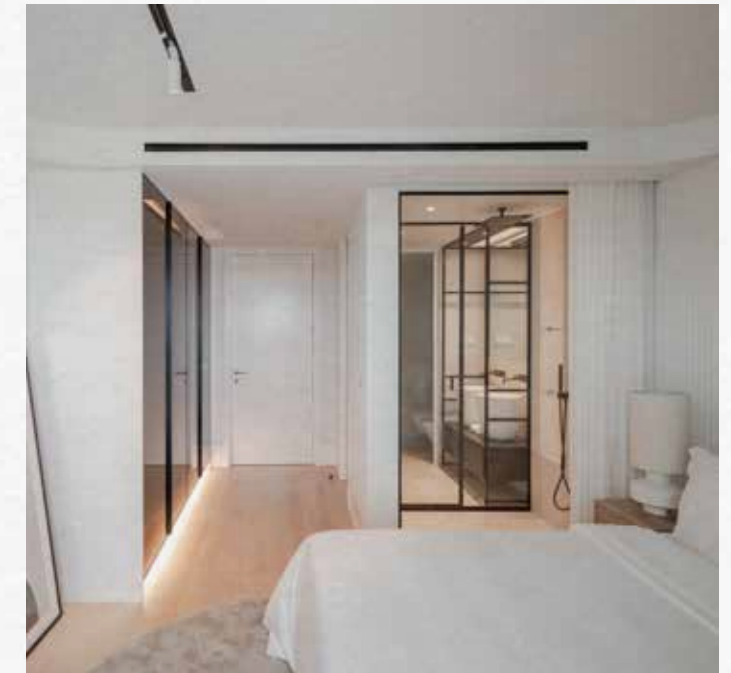
Savoy Residence represents excellence in design, quality, and innovation. Our brand delivers a superior living experience and exclusive access to Savoy Signature hotels' luxury services. Each development is a masterpiece of modernity and sophistication, committed to environmental and architectural distinction.



# Savoy Residence | Casa Branca



# Savoy Residence | Insular



# Savoy Residence | Monumentalis



Portugal | **Sotheby's**  
INTERNATIONAL REALTY

Developer & Sales



Brand Partner



Contractor



Architects



This information is purely indicative and may be subject to change without prior notice, so it is not contractual in nature