

SIX SENSES  
RESIDENCES

COMPORTA



# Pinheirinho

*A Life Reconnected*

Welcome to Pinheirinho, the soul of Portugal's Alentejo coast and home to Six Senses Comporta, a collection of 58 private residences and a 70-key resort designed to echo the raw, organic beauty of the land.

Just 90 minutes south of Lisbon, yet a world away, this community unfolds in a quiet symphony of pine forests, rolling dunes, and untouched beaches.

At Pinheirinho, the days evolve gently, whether kitesurfing renowned Atlantic waves, golfing on one of Portugal's preeminent links, or spending quality time at the family sports center. Hidden cafés transition from morning coffee to lazy summer lunches, boutiques showcase local artisans, and restaurants transform market-fresh, homegrown harvests into artful feasts, with each plate carrying the essence of the land.

Six Senses Comporta represents an extraordinary way of living authentically, in harmony with nature, in one of Portugal's most treasured and untouched destinations.



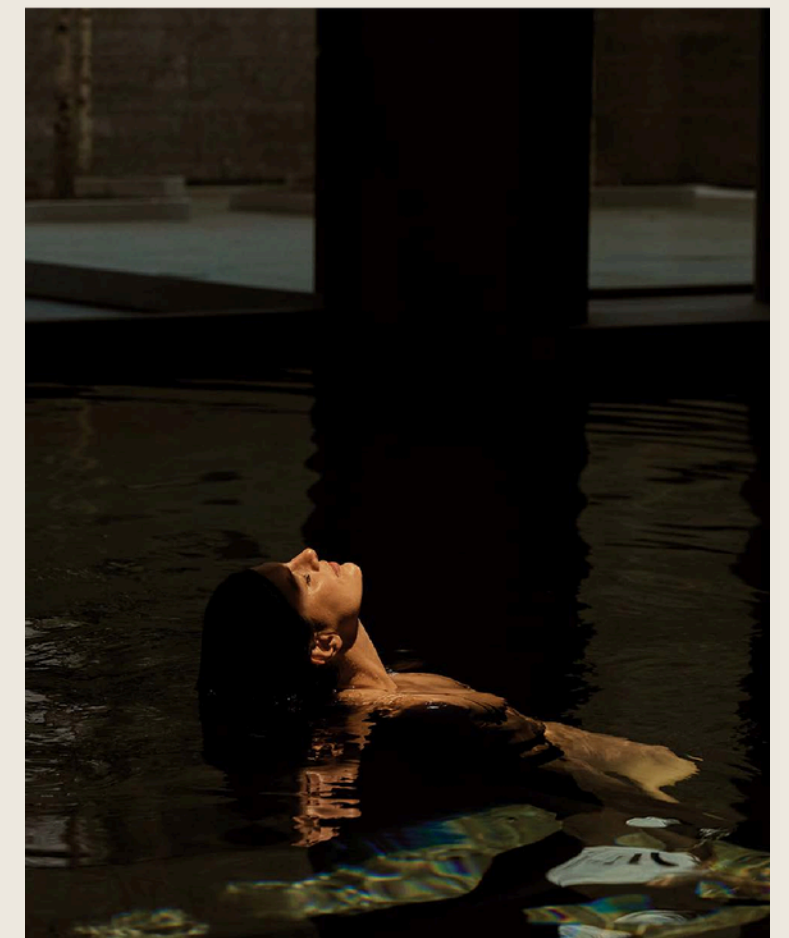
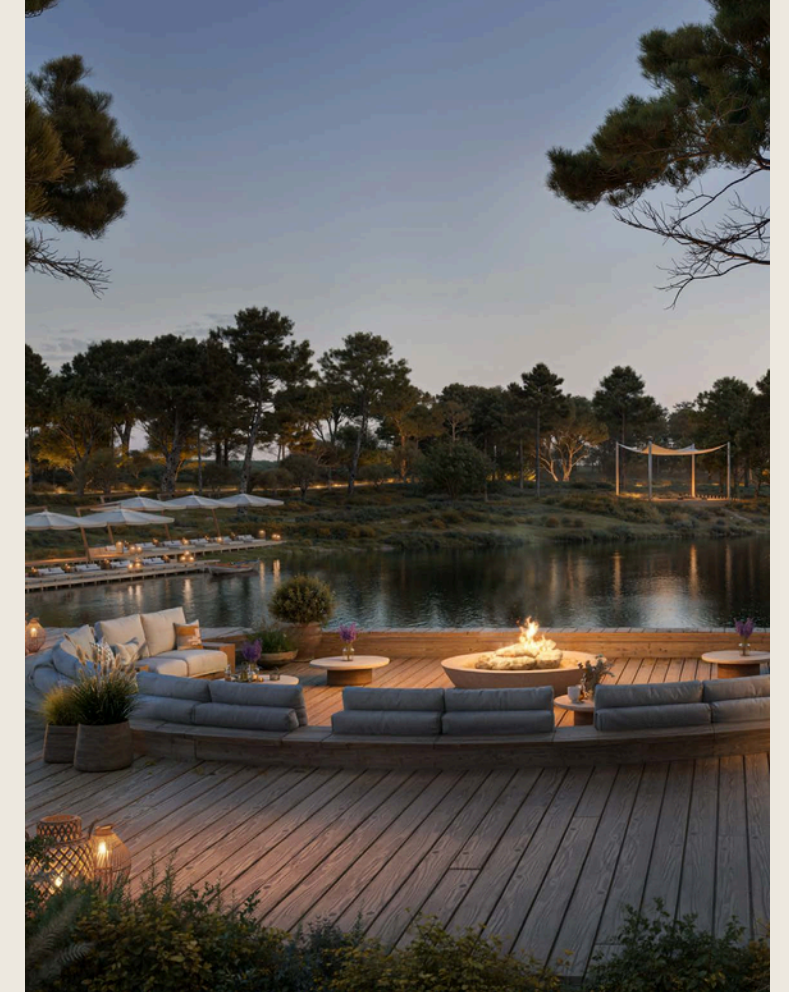
# Introduction

# INTIMATE COASTAL COMMUNITY

## Six Senses Residences Comporta

The collection of 58 private residences, ranging from two- to five-bedroom villas and apartments, was designed by Michaelis Boyd to invite the outdoors in.

Reflecting their position, whether forest, sand dune or lake, unique features elevate the quiet power of place through sustainable design, exquisite detail and a lifestyle grounded in wellness, community, and adventure.



# Six Senses Comporta

- |                            |                         |                                 |
|----------------------------|-------------------------|---------------------------------|
| 1 Main Entrance            | 10 *Forest Apartments   | 18 Sound Dome                   |
| 2 Six Senses Resort Suites | 11 *Forest Villas       | 19 Yoga Platform                |
| 3 Family Pool              | 12 *Sand Dune Villas    | 20 Kids' Forest                 |
| 4 Main Pool                | 13 *Lake Villas         | 21 Teens' Area                  |
| 5 Path of Life             | 14 Racket Sports        | 22 Spiritual Circle & Labyrinth |
| 6 Grow With Six Senses     | 15 Lake                 | 23 Earth Lab                    |
| 7 Wellness & Spa           | 16 Access to Beach      |                                 |
| 8 Owners' Lounge           | 17 Restaurants and Bars |                                 |
| 9 Vegetable Garden         |                         |                                 |



# Your Six Senses Comporta

All private residences come with easy and convenient access to all the unique privileges and an array of facilities and amenities at the Six Senses Comporta resort, starting with a variety of restaurants and bars.

Be as active or inactive as you choose, with a wide range of watersports and outdoor pursuits. From community lakes and shared amenities to events and wellness programming, the focus is on the balance between seclusion and social connection.

The all-day restaurant focuses on seasonal ingredients provided by the on-site vegetable garden in line with the Eat With Six Senses principles, where chefs prioritize natural, local, and sustainable ingredients, embracing the philosophy of 'less is more'.



Family Pool



All-day Restaurant

Family Pool and Adult-only Pool

Pool Bar and Grill

Rooftop Bar

Bakery, Cafe, and Deli Shop

Complimentary Ice cream

Owners' Lounge

Outdoor Cinema

Labyrinth & Sacred Geometry

Lake Pontoon

Lake Activities

Lake Sun Lounge Area

Boutique

Wellness & Spa

Sound Dome

Wine Bar

Grow With Six Senses

Sports Area

Yoga Platform

Kids' Forest

Teens' Area

Spiritual Circle

Organic Vegetable Garden

Chef's Table

Pool Bar, BBQ & Grill



# Six Senses Spa

From the food you eat to the way you sleep and the earth beneath your feet, wellness is woven into every part of the Six Senses experience. As your retreat within a retreat, Six Senses Spa Comporta enhances each element of your stay through high-touch, high-tech wellness treatments and therapies.

---

Eight Treatment Rooms and Sensory Suites

---

Sound Healing Room

---

Watsu with Chromotherapy

---

Fitness Studios and Outdoor Yoga Deck

---

Longevity Lounge

---

Relaxation Lounge

---

Panoramic Sauna

---

Herbal Sauna

---

Indoor Pool

---

Hot Pool

---

Yoga Pavilion

---

Outdoor Wellness Areas

---

Cold plunge and Ice Bath

---

Thermal Cabin

---

Outdoor Treatment Trailer

---

Biohacking Treatments

---

Alchemy Bar

---

Boutique

---







# Designed by Nature

The Forest Apartments and Villas are scattered among the trees to ensure a deep connection to nature, while the Sand Dune Villas are oriented to the west and south to capture the light. The 14 larger Lake Villas enjoy private gardens and expansive vistas, and all are within steps of the resort, spa, and beach that unfurls for miles.

Layered on to the experience are vibrant community spaces and a dedicated owners' lounge that set the stage for celebration.

## *Residence Features*

---

Generous Outdoor Living and Dining Spaces

---

Private Pools

---

Framing Views

---

Open Living Areas

---

Dedicated FF&E Package

---

Natural Gardens

---

Private Parking Spaces and Valet Service

---

Optional Rental Program, managed by Six Senses\*

---

Access to all Resort Facilities, Amenities,  
and Activities

---

4 Bedroom Lake Villa

\*Terms and conditions apply



2 Bedroom Sand Dune Villa

# The Six Senses Touch

Since its beginnings in 1995, Six Senses has been a pioneer of responsible practices. From the serenity of far-flung resorts and spas to urban splendor and uncompromisingly sumptuous private residences, Six Senses is an expert focus on wellness and sustainability and creating place where people can reconnect, in harmony with the local environment.

Each property has the brand's core values at heart, including sustainability, pioneering wellness, a fun and quirky energy and out-of-the-ordinary experiences. The enduring purpose is to help people reconnect with themselves, others and the world around them.



## *Eat*

A key component of the Six Senses Integrated Wellness approach, Eat With Six Senses, is based on three guiding principles: natural ingredients, local and sustainable, and less is more.

Menus take a cleaner and simpler approach to preparation, focusing on quality, balance and fresh, whole food made from scratch. Produce is often grown within on-site organic gardens and mushroom hubs and in some locations, the eggs and milk come from nearby farms.

## *Sleep*

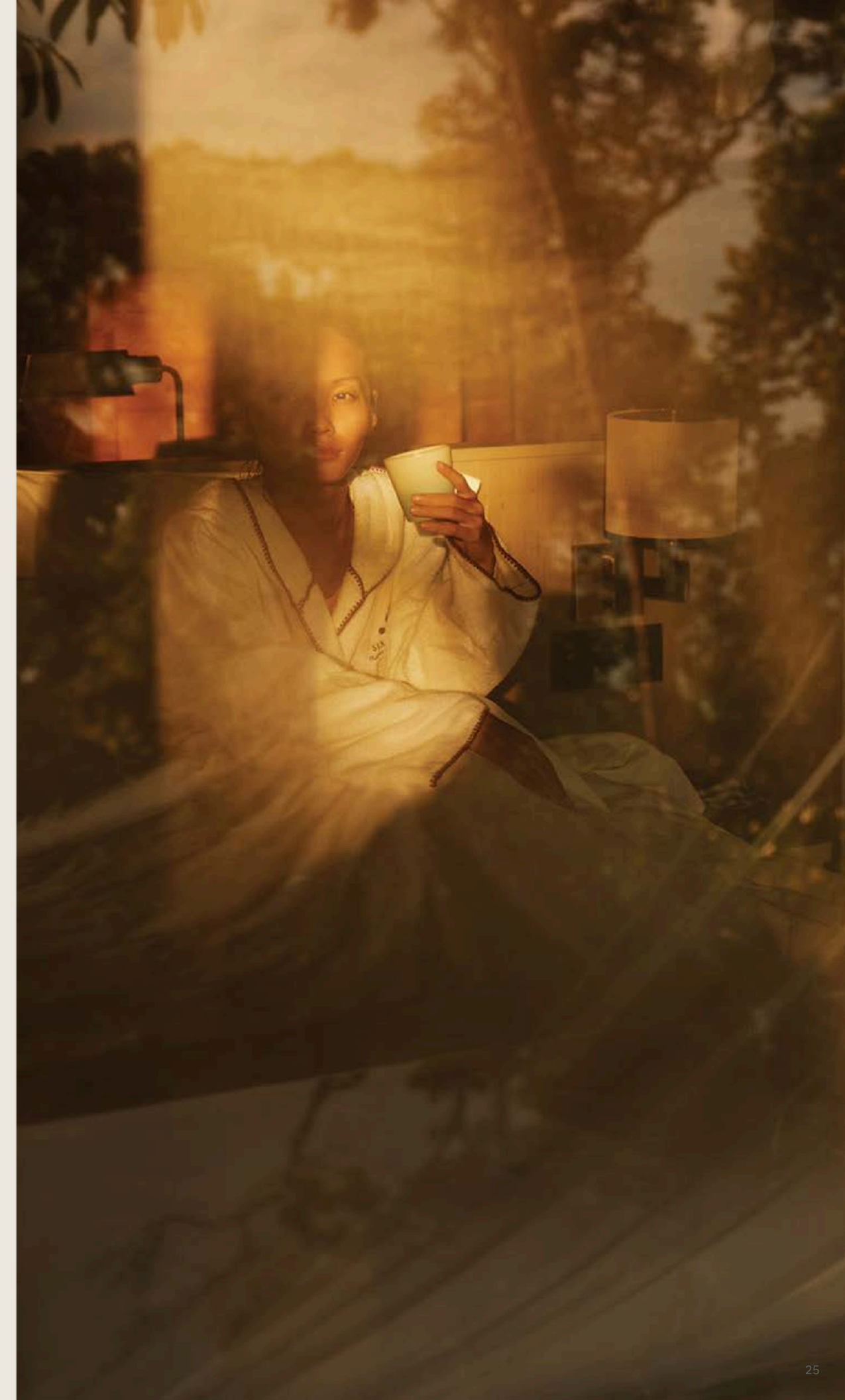
The groundbreaking Sleep With Six Senses standard was conceived in collaboration with renowned clinical psychologist and Sleep Doctor, Michael Breus. Every guest room is optimized for sleep, from the handmade mattresses by Naturalmat to the organic pillow menu and bedding on top.

A sleep tracker or sleep tracking ring can be arranged on a complimentary basis to measure a wide range of metrics during the different sleep stages and results are assessed during a sleep review to pinpoint any changes to be made for the following night.

## *Grow*

Vacations are a time away from routine for youngsters, a time to understand more about what's going on inside them and in the world around them. Grow With Six Senses incorporates the six dimensions of wellness (social, environmental, physical, spiritual, emotional and intellectual) so kids can reconnect with nature and gain useful life skills through play.

The focus is on out-of-the-ordinary experiences: everything from the active (organic gardening, cooking workshops) to the relaxing (spa treatments, singing bowl workshops) and the creative with a local twist (Vietnamese origami, Portuguese tile painting).



*Designed, sustainably*

To add meaning, drive innovation, enhance local socio-economic development, and create a hospitality offering that residents trust and love.

*Community, discovered*

A space crafted to help you reconnect — with yourself, with nature, and with those around you.

*Wellness, enhanced*

Designed to support physical, emotional, and spiritual well-being through daily rituals, nourishing experiences, and the natural rhythms of the land.

*Loyalty, rewarded*

VIP status and exclusive savings on room rates, food, beverages, spa menus, and much more.

*Mind, blown*

Dedicated on-site team and residential concierge hosts, private catering, in-residence spa treatments, bespoke transport, and event planning.



*Emotional Hospitality*

The tone is set as soon as you arrive at Six Senses Comporta, and you're whisked into a spacious oasis that integrates greenery and water features. From your welcome ritual through to your experiences, everything is done to ensure you feel the long-lasting and uplifting impact of emotional hospitality. This is wrapped up in meaningful moments, whether that means fresh air, waking up to birdsong, pioneering wellness, homegrown food, or a chance to interact with the community around you in a way that feels genuine and authentic.

# Owner Benefits

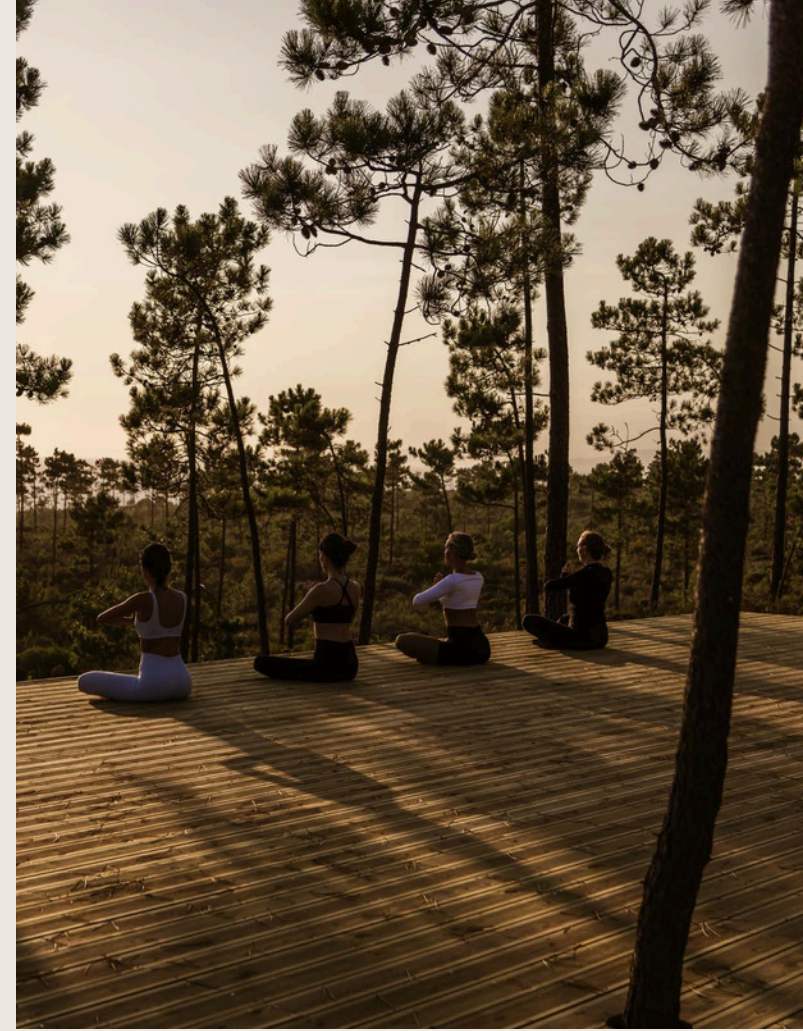
As owners, you are also supported by a full service team to offer an extensive range of services including a dedicated 24/7 concierge, security, and in-villa maintenance of selected fixtures, private landscaping and pool.

The optional rental opportunity means your residence can be placed into our room inventory when you're not occupying it yourself, terms and conditions apply.





Owners' Lounge & Vegetable Garden



## Services and Amenities

Dedicated Director of Residences

24/7 Residential Concierge and Security

Dedicated Owners' Lounge

Buggy Service throughout estate

Access to the Six Senses App

Villa and Landscape Maintenance

Private Villa Pool Maintenance and Cleaning

Access to Six Senses resort amenities, including gym, spa and wellness areas (treatments, activities and F&B will be available on an À La Carte basis)

Residential portal with access to booking services and homeowner information  
 Common Area Housekeeping and Maintenance  
 Valet Service

## À La Carte Services

Airport Meet and Greet/Transfer Services

Turn-down Services

Private In-room Dining

Private Fitness and Yoga Classes

Internet, IT support, and Satellite Television

In-residence Plant Care

Personal Shopper Service

Amenities and Pre-arrival Set-up

Dry Cleaning, Laundry, and Ironing

Daily Housekeeping

Vacant Home Care

Limousine and Land Transfers

Private Chef

Grocery Services

Childcare

Private Activities and Excursions

In-residence Spa Treatments

Personal Trainers

Private Event Planning

Butler Service

Personal Buggy Service

# Partners

## *Developer*

### **VIC Properties**

VIC Properties is a leading real estate developer focused on large-scale residential and hospitality projects in Portugal. VIC owns the Pinheirinho estate and is developing Six Senses Comporta Resort and Residences.

## *Resort and Rental Program Operator*

### **Six Senses**

Six Senses Hotels Resorts Spas started with a single resort in 1995, and quickly became generally recognized as a hospitality industry pioneer of sustainable and wellness practices, demonstrating that a leadership commitment to local communities and ecosystems can be successfully wedded to uncompromised top-tier facilities.

## *Architect & Interior Designer*

### **Michaelis Boyd**

Michaelis Boyd are architects and designers based in London and New York. They create spaces that are emotive, meaningful and thoughtful.

## *Executive & Local Architect*

### **CPU Architects**

Based in Portugal, CPU Architects fuse advanced architectural methods with sustainable design to create efficient, purposeful spaces.

## *Landscape Designer*

### **Topiaris**

Topiaris specializes in ecological landscape engineering, applying innovative planting to enrich natural and urban environments.

## *Lighting Designer*

### **Artec Studio**

Artec Studio combines architectural innovation with context-driven design to deliver impactful, functional spaces.

## *Sacred Geometry*

### **Alberto Amura**

Alberto Amura is an artist and spatial healer who creates bespoke resonance symbols and mandalas rooted in sacred geometry to harmonize energy and elevate human experience.

## *MEP & LEED*

### **XCO2**

Leveraging expertise in energy modeling and sustainable building systems, XCO2 provides consultancy to minimize carbon footprints in construction projects.

## *AV, IT & Security*

### **Dtech**

Dtech pioneers construction technology with digital tools and automation to streamline workflows and enhance precision.

## *Art Consultant*

### **Muzéo**

Muzéo is an art consultancy that curates and advises with an emphasis on cultural storytelling, shaping collections that connect art, people and place.



Portugal | **Sotheby's**  
INTERNATIONAL REALTY

**\*The residences are split across two zones:**

Touristic Development: this comprises 44 third-party resort residences branded as 'Six Senses Residences Comporta' (Sand Dune and Forest Residences).

Local Lodging Regime: this comprises 14 residences branded as 'The Residences at Six Senses Comporta' (Lake Residences).