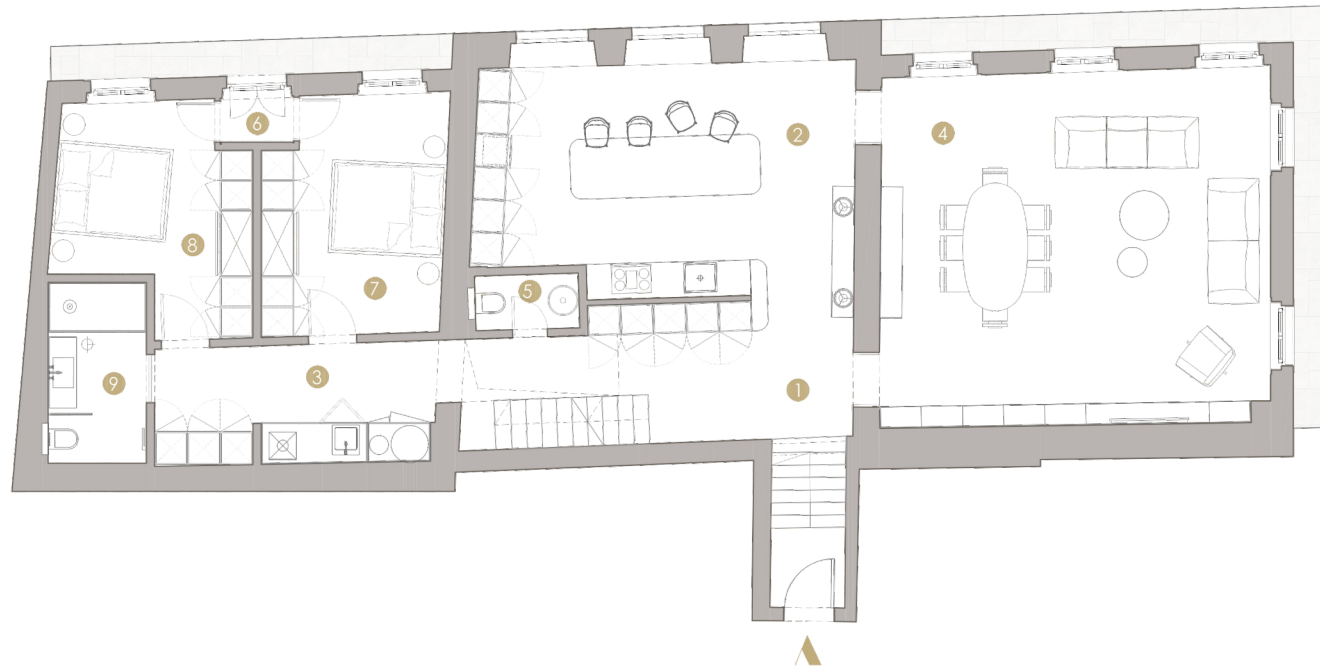


LEVEL 1



CASA
NOSSA

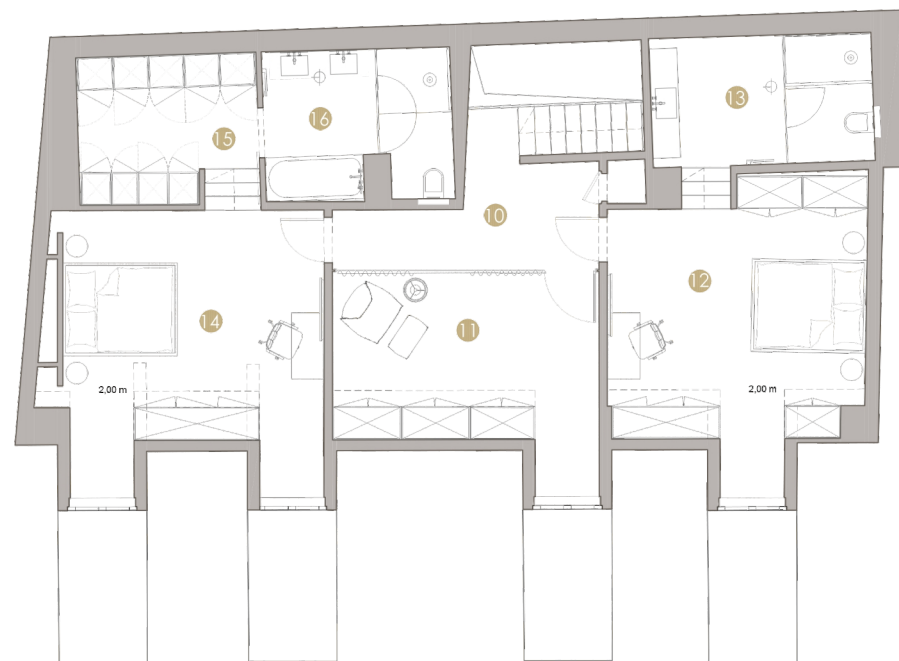
TWO - LEVEL
APARTMENT | PALÁCIO

TOTAL GROSS AREA
329,42 m²

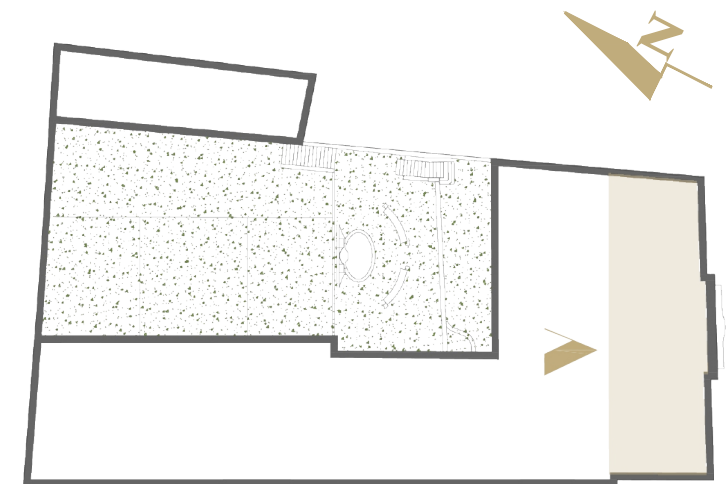
2 UNDERGROUND
PARKING SPOTS

	NO.	ROOM	USABLE AREA [M2]
1ST LEVEL	1	HALL	17,17
	2	KITCHEN	29,73
	3	CORRIDOR	11,06
	4	LIVING ROOM	46,09
	5	TOILET	1,90
	6	CORRIDOR	1,10
	7	BEDROOM	14,12
	8	BEDROOM	13,02
	9	BATHROOM	5,96
2ND LEVEL	10	CORRIDOR	8,44
	11	LIBRARY	16,38
	12	BEDROOM	22,49
	13	BATHROOM	10,28
	14	BEDROOM	22,97
	15	WARDROBE	9,09
	16	BATHROOM	9,12

LEVEL 2



ENTRANCE ON 2ND FLOOR



The information, images and areas contained in the plans are merely indicative and may, within the scope of the licensing procedure and of the construction works, notably for administrative, technical, commercial, or legal reasons, be subject to modifications, alterations and/or adjustments without prior notice, and therefore have no contractual value.