



ST REGIS
MIAMI
THE RESIDENCES

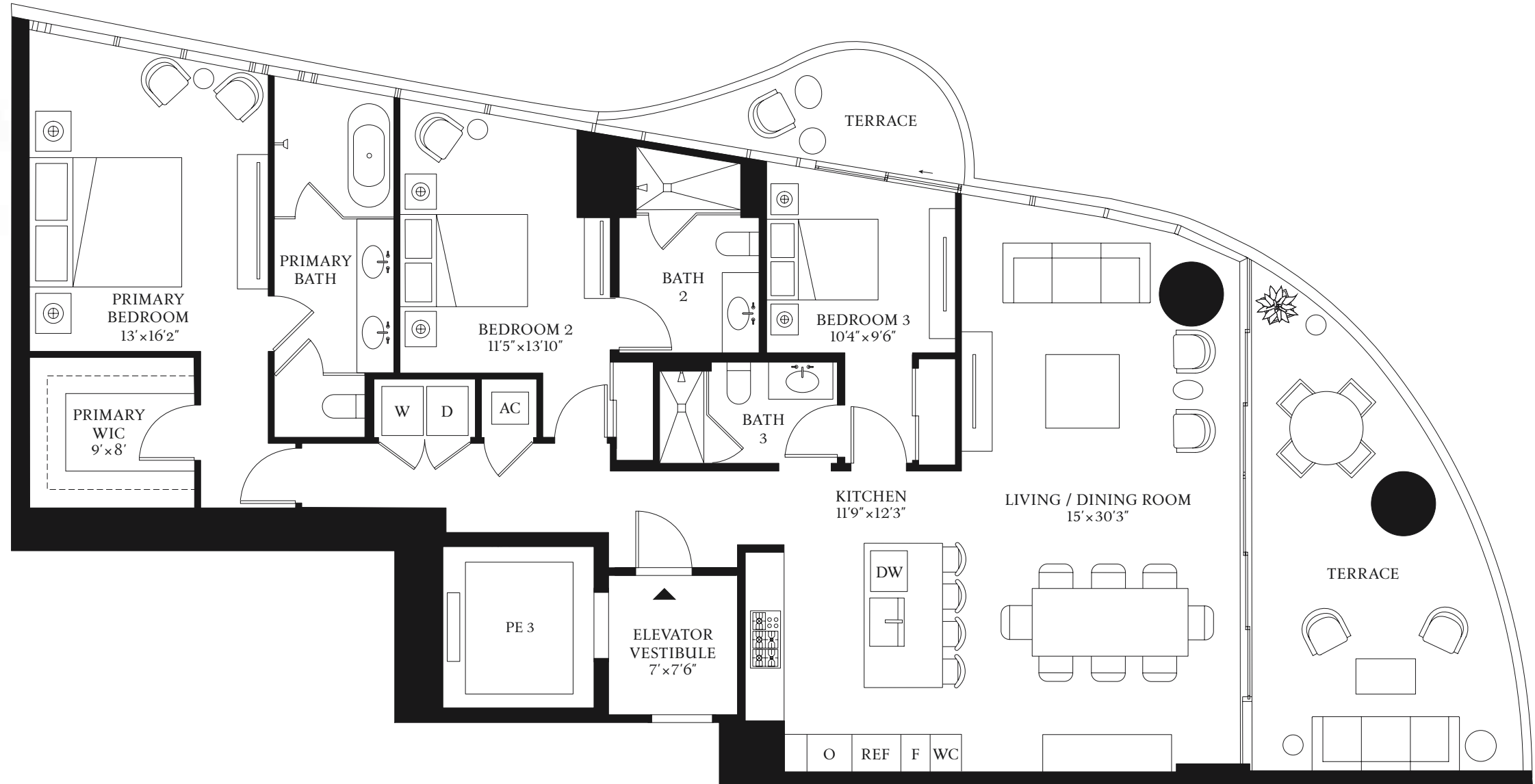
RESIDENCE

01

FLOORS 9-17

WEST TOWER
3 BEDROOMS
3 BATHROOMS

INTERIOR
1,911 SF | 177.5 SQM
EXTERIOR
369 SF | 34.3 SQM



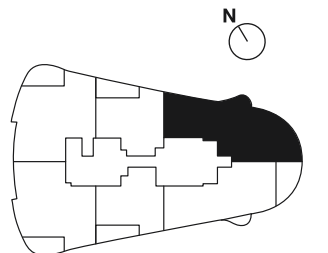
BISCAYNE BAY

1809 Brickell Avenue
Miami, FL 33129

ORAL REPRESENTATIONS CANNOT BE RELIED UPON AS CORRECTLY STATING REPRESENTATIONS OF THE DEVELOPER. FOR CORRECT REPRESENTATIONS, MAKE REFERENCE TO THE DOCUMENTS REQUIRED BY SECTION 718.503, FLORIDA STATUTES, TO BE FURNISHED BY A DEVELOPER TO A BUYER OR LESSEE.

The St. Regis Residences, Miami East Tower a condominium within The St. Regis Residences, Miami (the "Condominium") is developed by 1809 Brickell Phase II, LLC ("Developer") and this offering is made only by the Developer's Prospectus for the Condominium. Sketches, renderings, or photographs depicting lifestyle, amenities, food services, club services, rental services, hosting services, finishes, designs, materials, furnishings, fixtures, appliances, cabinetry, soffits, lighting, countertops, floor plans, specifications, or art are proposed only, and the Developer reserves the right to modify, revise, or withdraw any or all of the same in its sole discretion. No specific view is guaranteed. Dimensions and square footage are approximate and may vary depending on how measured and based upon actual construction. Any art installed will be selected by the Developer at the Developer's sole discretion and shall be owned by Developer and not owned by the Condominium Association. Nearby attractions, shopping venues, restaurants, and activities referenced or depicted are off-site, are not controlled by the Developer, and are not guaranteed to exist upon completion of the Condominium. All statistics referenced are based on public information available as of the date of initial marketing of the Condominium. Pursuant to license agreements Developer has a right to use the trade names, marks, and logos of: (1) St Regis; (2) St. Regis Residences; (3) The Related Group; and (3) Integra Investments, LLC and the Developer shall continue to have to the right to use each respective name and logos affiliated with each name for so long as the license agreement governing use of a name is not terminated or expired. The Association for the Condominium is required to maintain a Residential Condominium Management Agreement with Marriott International, Inc., or its successors and assigns, in order to use the names St. Regis or St Regis Residences or the logos affiliated with these names. Marriott International, Inc. is not the Developer and is not responsible for the marketing, development, or sales of the Condominium. Marriott International, Inc., The Related Group, and Integra Investments, LLC are each licensor, and none is the Developer. Consult the Developer's Prospectus for the proposed budget, terms, conditions, specifications, fees, and Unit dimensions. The Developer is not incorporated in, located in, nor a resident of, New York. This is not intended to be an offer to sell, or solicitation of an offer to buy, condominium units in New York or to residents of New York, or of any other jurisdiction were prohibited by law. 2022 © 1809 Brickell Phase II, LLC, with all rights reserved. 🏠

BRICKELL AVE





ST REGIS
MIAMI
THE RESIDENCES

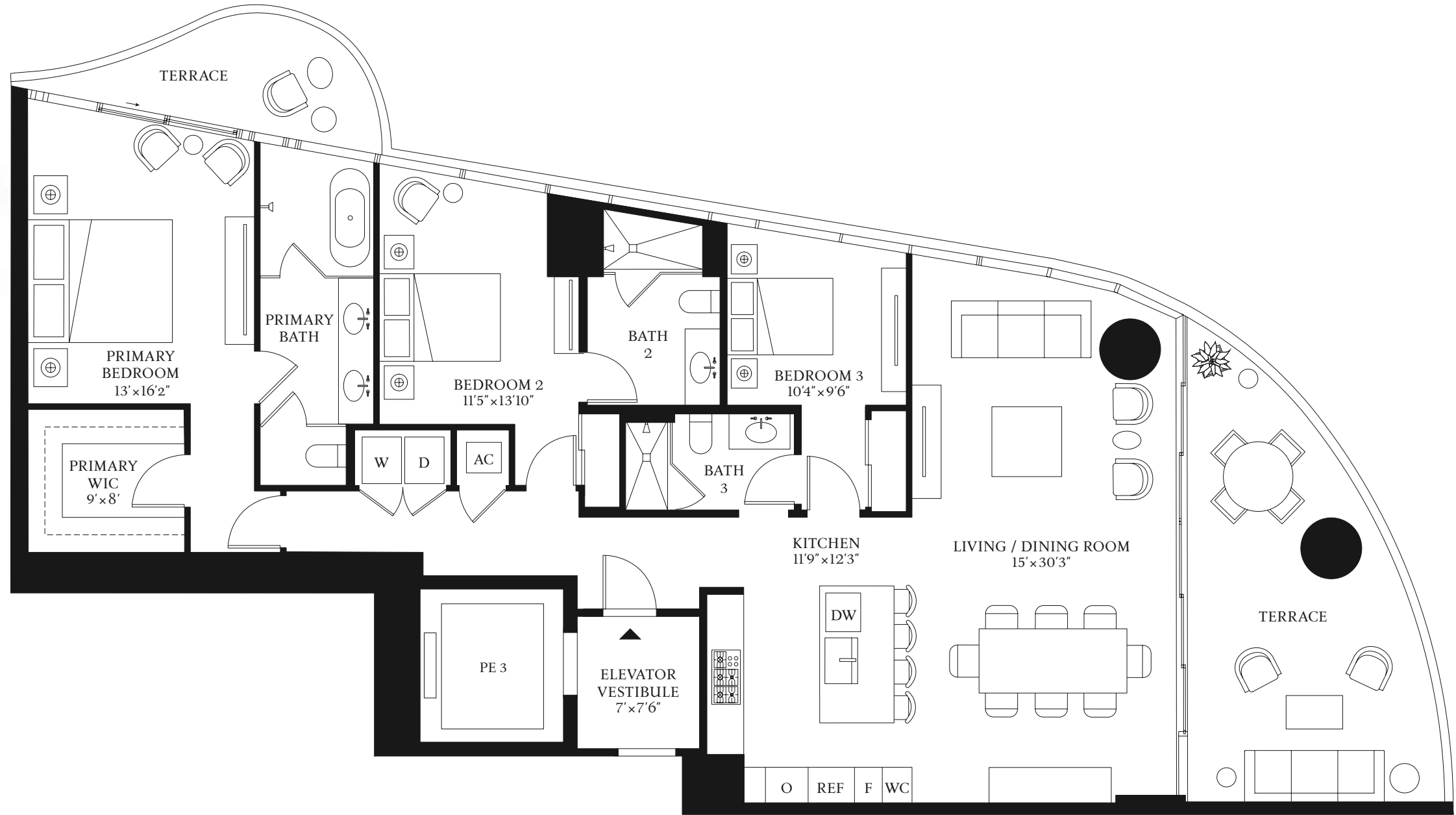
RESIDENCE

01

FLOORS 18, 21-30

WEST TOWER
3 BEDROOMS
3 BATHROOMS

INTERIOR
1,911 SF | 177.5 SQM
EXTERIOR
385 SF | 35.8 SQM

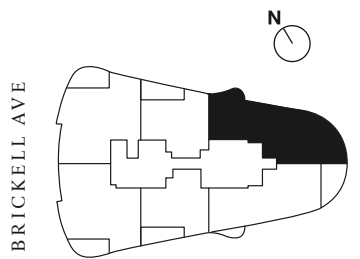


BISCAYNE BAY

1809 Brickell Avenue
Miami, FL 33129

ORAL REPRESENTATIONS CANNOT BE RELIED UPON AS CORRECTLY STATING REPRESENTATIONS OF THE DEVELOPER. FOR CORRECT REPRESENTATIONS, MAKE REFERENCE TO THE DOCUMENTS REQUIRED BY SECTION 718.503, FLORIDA STATUTES, TO BE FURNISHED BY A DEVELOPER TO A BUYER OR LESSEE.

The St. Regis Residences, Miami East Tower a condominium within The St. Regis Residences, Miami (the "Condominium") is developed by 1809 Brickell Phase II, LLC ("Developer") and this offering is made only by the Developer's Prospectus for the Condominium. Sketches, renderings, or photographs depicting lifestyle, amenities, food services, club services, rental services, hosting services, finishes, designs, materials, furnishings, fixtures, appliances, cabinetry, soffits, lighting, countertops, floor plans, specifications, or art are proposed only, and the Developer reserves the right to modify, revise, or withdraw any or all of the same in its sole discretion. No specific view is guaranteed. Dimensions and square footage are approximate and may vary depending on how measured and based upon actual construction. Any art installed will be selected by the Developer at the Developer's sole discretion and shall be owned by Developer and not owned by the Condominium Association. Nearby attractions, shopping venues, restaurants, and activities referenced or depicted are off-site, are not controlled by the Developer, and are not guaranteed to exist upon completion of the Condominium. All statistics referenced are based on public information available as of the date of initial marketing of the Condominium. Pursuant to license agreements Developer has a right to use the trade names, marks, and logos of: (1) St Regis; (2) St. Regis Residences; (3) The Related Group; and (3) Integra Investments, LLC and the Developer shall continue to have to the right to use each respective name and logos affiliated with each name for so long as the license agreement governing use of a name is not terminated or expired. The Association for the Condominium is required to maintain a Residential Condominium Management Agreement with Marriott International, Inc., or its successors and assigns, in order to use the names St. Regis or St Regis Residences or the logos affiliated with these names. Marriott International, Inc. is not the Developer and is not responsible for the marketing, development, or sales of the Condominium. Marriott International, Inc., The Related Group, and Integra Investments, LLC are each licensor, and none is the Developer. Consult the Developer's Prospectus for the proposed budget, terms, conditions, specifications, fees, and Unit dimensions. The Developer is not incorporated in, located in, nor a resident of, New York. This is not intended to be an offer to sell, or solicitation of an offer to buy, condominium units in New York or to residents of New York, or of any other jurisdiction were prohibited by law. 2022 © 1809 Brickell Phase II, LLC, with all rights reserved.





ST REGIS
MIAMI
THE RESIDENCES

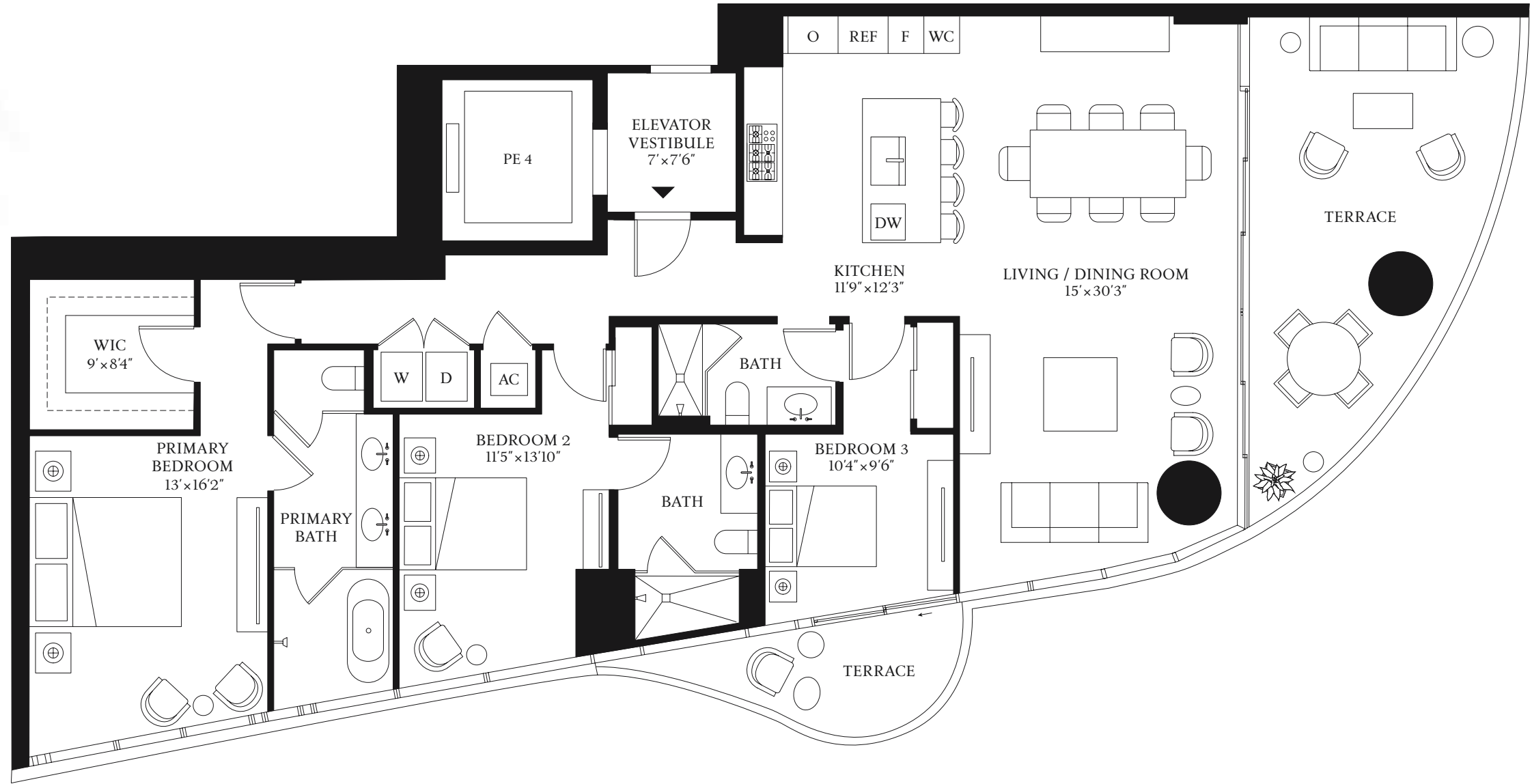
RESIDENCE

02

FLOORS 9-17

WEST TOWER
3 BEDROOMS
3 BATHROOMS

INTERIOR
1,914 SF | 177.8 SQM
EXTERIOR
369 SF | 34.3 SQM

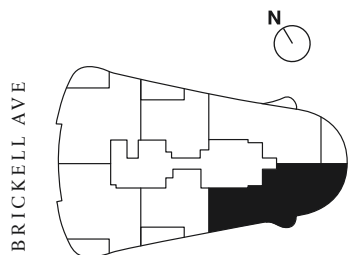


BISCAYNE BAY

1809 Brickell Avenue
Miami, FL 33129

ORAL REPRESENTATIONS CANNOT BE RELIED UPON AS CORRECTLY STATING REPRESENTATIONS OF THE DEVELOPER. FOR CORRECT REPRESENTATIONS, MAKE REFERENCE TO THE DOCUMENTS REQUIRED BY SECTION 718.503, FLORIDA STATUTES, TO BE FURNISHED BY A DEVELOPER TO A BUYER OR LESSEE.

The St. Regis Residences, Miami East Tower a condominium within The St. Regis Residences, Miami (the "Condominium") is developed by 1809 Brickell Phase II, LLC ("Developer") and this offering is made only by the Developer's Prospectus for the Condominium. Sketches, renderings, or photographs depicting lifestyle, amenities, food services, club services, rental services, hosting services, finishes, designs, materials, furnishings, fixtures, appliances, cabinetry, soffits, lighting, countertops, floor plans, specifications, or art are proposed only, and the Developer reserves the right to modify, revise, or withdraw any or all of the same in its sole discretion. No specific view is guaranteed. Dimensions and square footage are approximate and may vary depending on how measured and based upon actual construction. Any art installed will be selected by the Developer at the Developer's sole discretion and shall be owned by Developer and not owned by the Condominium Association. Nearby attractions, shopping venues, restaurants, and activities referenced or depicted are off-site, are not controlled by the Developer, and are not guaranteed to exist upon completion of the Condominium. All statistics referenced are based on public information available as of the date of initial marketing of the Condominium. Pursuant to license agreements Developer has a right to use the trade names, marks, and logos of: (1) St Regis; (2) St. Regis Residences; (3) The Related Group; and (3) Integra Investments, LLC and the Developer shall continue to have to the right to use each respective name and logos affiliated with each name for so long as the license agreement governing use of a name is not terminated or expired. The Association for the Condominium is required to maintain a Residential Condominium Management Agreement with Marriott International, Inc., or its successors and assigns, in order to use the names St. Regis or St Regis Residences or the logos affiliated with these names. Marriott International, Inc. is not the Developer and is not responsible for the marketing, development, or sales of the Condominium. Marriott International, Inc., The Related Group, and Integra Investments, LLC are each licensor, and none is the Developer. Consult the Developer's Prospectus for the proposed budget, terms, conditions, specifications, fees, and Unit dimensions. The Developer is not incorporated in, located in, nor a resident of, New York. This is not intended to be an offer to sell, or solicitation of an offer to buy, condominium units in New York or to residents of New York, or of any other jurisdiction were prohibited by law. 2022 © 1809 Brickell Phase II, LLC, with all rights reserved.





ST REGIS
MIAMI
THE RESIDENCES

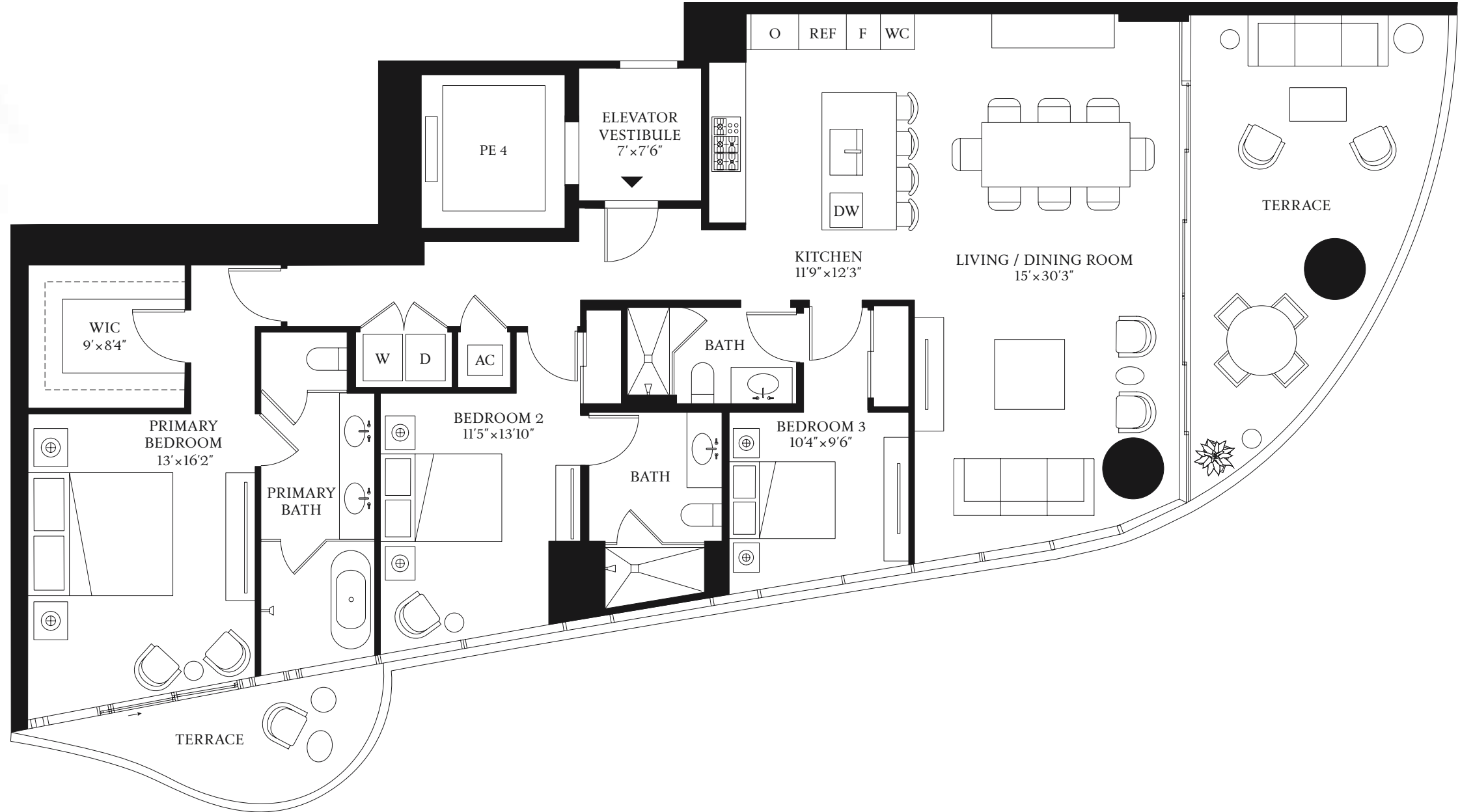
RESIDENCE

02

FLOORS 18, 21-30

WEST TOWER
3 BEDROOMS
3 BATHROOMS

INTERIOR
1,914 SF | 177.8 SQM
EXTERIOR
385 SF | 35.8 SQM

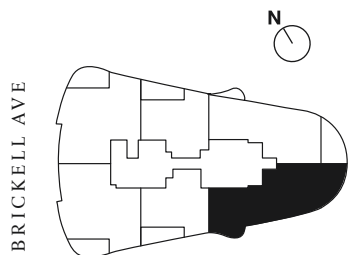


BISCAYNE BAY

1809 Brickell Avenue
Miami, FL 33129

ORAL REPRESENTATIONS CANNOT BE RELIED UPON AS CORRECTLY STATING REPRESENTATIONS OF THE DEVELOPER. FOR CORRECT REPRESENTATIONS, MAKE REFERENCE TO THE DOCUMENTS REQUIRED BY SECTION 718.503, FLORIDA STATUTES, TO BE FURNISHED BY A DEVELOPER TO A BUYER OR LESSEE.

The St. Regis Residences, Miami East Tower a condominium within The St. Regis Residences, Miami (the "Condominium") is developed by 1809 Brickell Phase II, LLC ("Developer") and this offering is made only by the Developer's Prospectus for the Condominium. Sketches, renderings, or photographs depicting lifestyle, amenities, food services, club services, rental services, hosting services, finishes, designs, materials, furnishings, fixtures, appliances, cabinetry, soffits, lighting, countertops, floor plans, specifications, or art are proposed only, and the Developer reserves the right to modify, revise, or withdraw any or all of the same in its sole discretion. No specific view is guaranteed. Dimensions and square footage are approximate and may vary depending on how measured and based upon actual construction. Any art installed will be selected by the Developer at the Developer's sole discretion and shall be owned by Developer and not owned by the Condominium Association. Nearby attractions, shopping venues, restaurants, and activities referenced or depicted are off-site, are not controlled by the Developer, and are not guaranteed to exist upon completion of the Condominium. All statistics referenced are based on public information available as of the date of initial marketing of the Condominium. Pursuant to license agreements Developer has a right to use the trade names, marks, and logos of: (1) St Regis; (2) St. Regis Residences; (3) The Related Group; and (3) Integra Investments, LLC and the Developer shall continue to have to the right to use each respective name and logos affiliated with each name for so long as the license agreement governing use of a name is not terminated or expired. The Association for the Condominium is required to maintain a Residential Condominium Management Agreement with Marriott International, Inc., or its successors and assigns, in order to use the names St. Regis or St Regis Residences or the logos affiliated with these names. Marriott International, Inc. is not the Developer and is not responsible for the marketing, development, or sales of the Condominium. Marriott International, Inc., The Related Group, and Integra Investments, LLC are each licensor, and none is the Developer. Consult the Developer's Prospectus for the proposed budget, terms, conditions, specifications, fees, and Unit dimensions. The Developer is not incorporated in, located in, nor a resident of, New York. This is not intended to be an offer to sell, or solicitation of an offer to buy, condominium units in New York or to residents of New York, or of any other jurisdiction were prohibited by law. 2022 © 1809 Brickell Phase II, LLC, with all rights reserved.





ST REGIS
MIAMI
THE RESIDENCES

RESIDENCE

03

FLOORS 9-18, 21-30

WEST TOWER

1 BEDROOM

1 BATHROOM

1 POWDER ROOM

INTERIOR

1,503 SF | 139.6 SQM

EXTERIOR

220 SF | 20.4 SQM

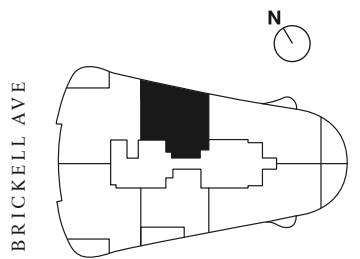


BISCAYNE BAY

1809 Brickell Avenue
Miami, FL 33129

ORAL REPRESENTATIONS CANNOT BE RELIED UPON AS CORRECTLY STATING REPRESENTATIONS OF THE DEVELOPER. FOR CORRECT REPRESENTATIONS, MAKE REFERENCE TO THE DOCUMENTS REQUIRED BY SECTION 718.503, FLORIDA STATUTES, TO BE FURNISHED BY A DEVELOPER TO A BUYER OR LESSEE.

The St. Regis Residences, Miami East Tower a condominium within The St. Regis Residences, Miami (the "Condominium") is developed by 1809 Brickell Phase II, LLC ("Developer") and this offering is made only by the Developer's Prospectus for the Condominium. Sketches, renderings, or photographs depicting lifestyle, amenities, food services, club services, rental services, hosting services, finishes, designs, materials, furnishings, fixtures, appliances, cabinetry, soffits, lighting, countertops, floor plans, specifications, or art are proposed only, and the Developer reserves the right to modify, revise, or withdraw any or all of the same in its sole discretion. No specific view is guaranteed. Dimensions and square footage are approximate and may vary depending on how measured and based upon actual construction. Any art installed will be selected by the Developer at the Developer's sole discretion and shall be owned by Developer and not owned by the Condominium Association. Nearby attractions, shopping venues, restaurants, and activities referenced or depicted are off-site, are not controlled by the Developer, and are not guaranteed to exist upon completion of the Condominium. All statistics referenced are based on public information available as of the date of initial marketing of the Condominium. Pursuant to license agreements Developer has a right to use the trade names, marks, and logos of: (1) St Regis; (2) St. Regis Residences; (3) The Related Group; and (3) Integra Investments, LLC and the Developer shall continue to have to the right to use each respective name and logos affiliated with each name for so long as the license agreement governing use of a name is not terminated or expired. The Association for the Condominium is required to maintain a Residential Condominium Management Agreement with Marriott International, Inc., or its successors and assigns, in order to use the names St. Regis or St Regis Residences or the logos affiliated with these names. Marriott International, Inc. is not the Developer and is not responsible for the marketing, development, or sales of the Condominium. Marriott International, Inc., The Related Group, and Integra Investments, LLC are each licensor, and none is the Developer. Consult the Developer's Prospectus for the proposed budget, terms, conditions, specifications, fees, and Unit dimensions. The Developer is not incorporated in, located in, nor a resident of, New York. This is not intended to be an offer to sell, or solicitation of an offer to buy, condominium units in New York or to residents of New York, or of any other jurisdiction were prohibited by law. 2022 © 1809 Brickell Phase II, LLC, with all rights reserved.





RESIDENCE

04

FLOORS 9-18, 21-30

WEST TOWER

1 BEDROOM

1 BATHROOM

1 POWDER ROOM

INTERIOR

1,401 SF | 130.2 SQM

EXTERIOR

220 SF | 20.4 SQM



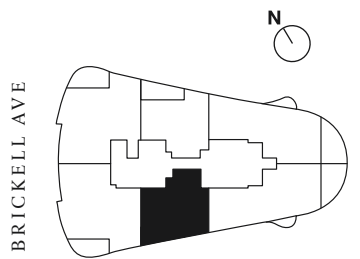
ST REGIS MIAMI THE RESIDENCES

BISCAYNE BAY

1809 Brickell Avenue Miami, FL 33129

ORAL REPRESENTATIONS CANNOT BE RELIED UPON AS CORRECTLY STATING REPRESENTATIONS OF THE DEVELOPER. FOR CORRECT REPRESENTATIONS, MAKE REFERENCE TO THE DOCUMENTS REQUIRED BY SECTION 718.503, FLORIDA STATUTES, TO BE FURNISHED BY A DEVELOPER TO A BUYER OR LESSEE.

The St. Regis Residences, Miami East Tower a condominium within The St. Regis Residences, Miami (the "Condominium") is developed by 1809 Brickell Phase II, LLC ("Developer") and this offering is made only by the Developer's Prospectus for the Condominium. Sketches, renderings, or photographs depicting lifestyle, amenities, food services, club services, rental services, hosting services, finishes, designs, materials, furnishings, fixtures, appliances, cabinetry, soffits, lighting, countertops, floor plans, specifications, or art are proposed only, and the Developer reserves the right to modify, revise, or withdraw any or all of the same in its sole discretion. No specific view is guaranteed. Dimensions and square footage are approximate and may vary depending on how measured and based upon actual construction. Any art installed will be selected by the Developer at the Developer's sole discretion and shall be owned by Developer and not owned by the Condominium Association. Nearby attractions, shopping venues, restaurants, and activities referenced or depicted are off-site, are not controlled by the Developer, and are not guaranteed to exist upon completion of the Condominium. All statistics referenced are based on public information available as of the date of initial marketing of the Condominium. Pursuant to license agreements Developer has a right to use the trade names, marks, and logos of: (1) St Regis; (2) St. Regis Residences; (3) The Related Group; and (3) Integra Investments, LLC and the Developer shall continue to have to the right to use each respective name and logos affiliated with each name for so long as the license agreement governing use of a name is not terminated or expired. The Association for the Condominium is required to maintain a Residential Condominium Management Agreement with Marriott International, Inc., or its successors and assigns, in order to use the names St. Regis or St Regis Residences or the logos affiliated with these names. Marriott International, Inc. is not the Developer and is not responsible for the marketing, development, or sales of the Condominium. Marriott International, Inc., The Related Group, and Integra Investments, LLC are each licensor, and none is the Developer. Consult the Developer's Prospectus for the proposed budget, terms, conditions, specifications, fees, and Unit dimensions. The Developer is not incorporated in, located in, nor a resident of, New York. This is not intended to be an offer to sell, or solicitation of an offer to buy, condominium units in New York or to residents of New York, or of any other jurisdiction were prohibited by law. 2022 © 1809 Brickell Phase II, LLC, with all rights reserved.





ST REGIS
MIAMI
THE RESIDENCES

RESIDENCE

05

FLOORS 9-18, 21-30

WEST TOWER

2 BEDROOMS

2 BATHROOMS

1 POWDER ROOM

INTERIOR

2,023 SF | 187.9 SQM

EXTERIOR

245 SF | 22.8 SQM



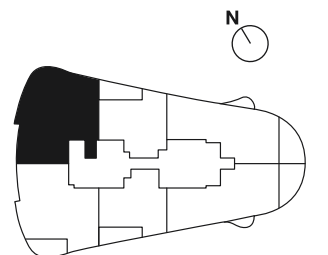
BISCAYNE BAY

1809 Brickell Avenue
Miami, FL 33129

ORAL REPRESENTATIONS CANNOT BE RELIED UPON AS CORRECTLY STATING REPRESENTATIONS OF THE DEVELOPER. FOR CORRECT REPRESENTATIONS, MAKE REFERENCE TO THE DOCUMENTS REQUIRED BY SECTION 718.503, FLORIDA STATUTES, TO BE FURNISHED BY A DEVELOPER TO A BUYER OR LESSEE.

The St. Regis Residences, Miami East Tower a condominium within The St. Regis Residences, Miami (the "Condominium") is developed by 1809 Brickell Phase II, LLC ("Developer") and this offering is made only by the Developer's Prospectus for the Condominium. Sketches, renderings, or photographs depicting lifestyle, amenities, food services, club services, rental services, hosting services, finishes, designs, materials, furnishings, fixtures, appliances, cabinetry, soffits, lighting, countertops, floor plans, specifications, or art are proposed only, and the Developer reserves the right to modify, revise, or withdraw any or all of the same in its sole discretion. No specific view is guaranteed. Dimensions and square footage are approximate and may vary depending on how measured and based upon actual construction. Any art installed will be selected by the Developer at the Developer's sole discretion and shall be owned by Developer and not owned by the Condominium Association. Nearby attractions, shopping venues, restaurants, and activities referenced or depicted are off-site, are not controlled by the Developer, and are not guaranteed to exist upon completion of the Condominium. All statistics referenced are based on public information available as of the date of initial marketing of the Condominium. Pursuant to license agreements Developer has a right to use the trade names, marks, and logos of: (1) St Regis; (2) St. Regis Residences; (3) The Related Group; and (3) Integra Investments, LLC and the Developer shall continue to have to the right to use each respective name and logos affiliated with each name for so long as the license agreement governing use of a name is not terminated or expired. The Association for the Condominium is required to maintain a Residential Condominium Management Agreement with Marriott International, Inc., or its successors and assigns, in order to use the names St. Regis or St Regis Residences or the logos affiliated with these names. Marriott International, Inc. is not the Developer and is not responsible for the marketing, development, or sales of the Condominium. Marriott International, Inc., The Related Group, and Integra Investments, LLC are each licensor, and none is the Developer. Consult the Developer's Prospectus for the proposed budget, terms, conditions, specifications, fees, and Unit dimensions. The Developer is not incorporated in, located in, nor a resident of, New York. This is not intended to be an offer to sell, or solicitation of an offer to buy, condominium units in New York or to residents of New York, or of any other jurisdiction were prohibited by law. 2022 © 1809 Brickell Phase II, LLC, with all rights reserved.

BRICKELL AVE





RESIDENCE

06

FLOORS 9-18, 21-30

WEST TOWER

2 BEDROOMS

2 BATHROOMS

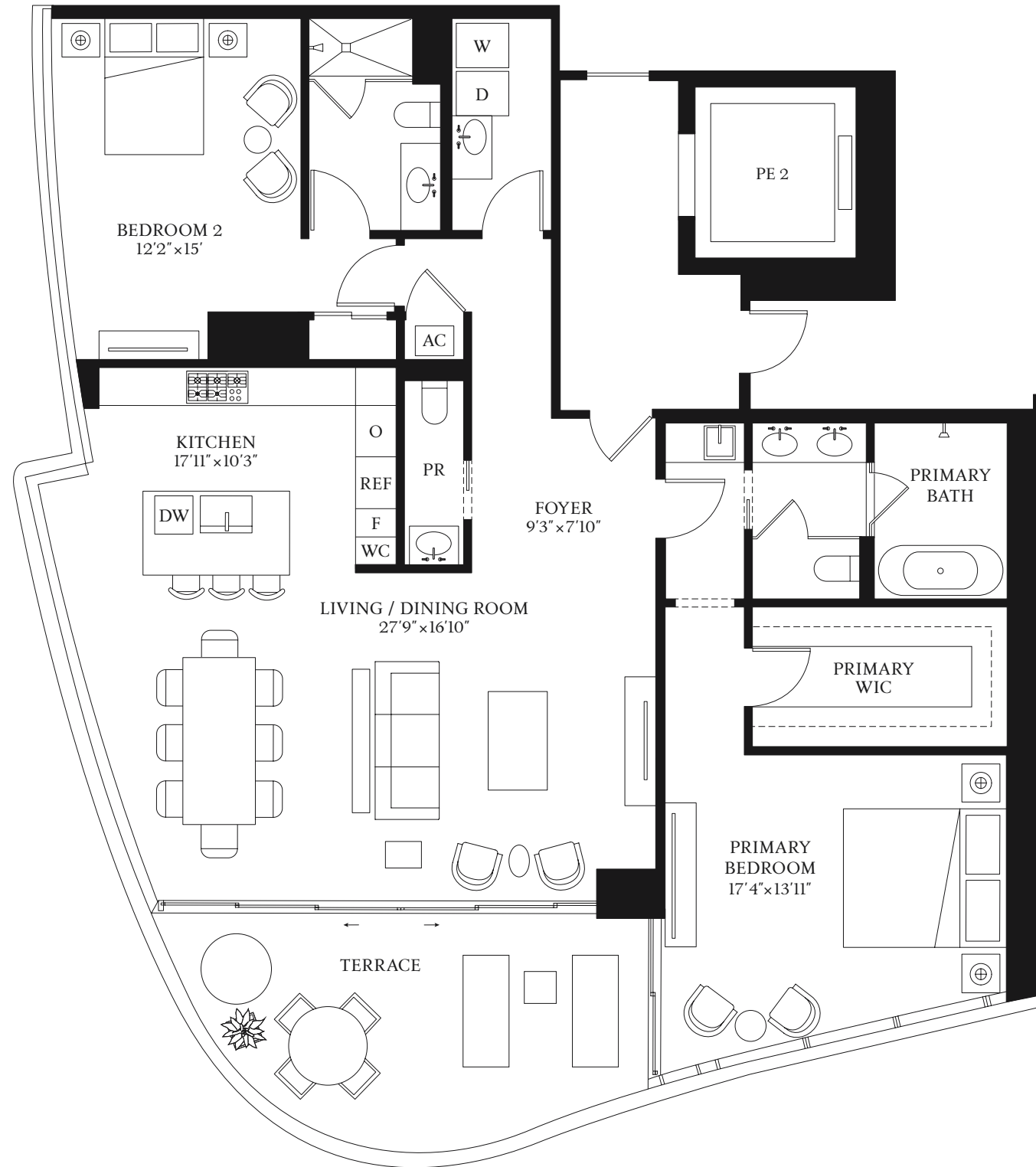
1 POWDER ROOM

INTERIOR

1,872 SF | 187.9 SQM

EXTERIOR

245 SF | 22.8 SQM



ST REGIS
 MIAMI
 THE RESIDENCES

BISCAYNE BAY

1809 Brickell Avenue
Miami, FL 33129

ORAL REPRESENTATIONS CANNOT BE RELIED UPON AS CORRECTLY STATING REPRESENTATIONS OF THE DEVELOPER. FOR CORRECT REPRESENTATIONS, MAKE REFERENCE TO THE DOCUMENTS REQUIRED BY SECTION 718.503, FLORIDA STATUTES, TO BE FURNISHED BY A DEVELOPER TO A BUYER OR LESSEE.

The St. Regis Residences, Miami East Tower a condominium within The St. Regis Residences, Miami (the "Condominium") is developed by 1809 Brickell Phase II, LLC ("Developer") and this offering is made only by the Developer's Prospectus for the Condominium. Sketches, renderings, or photographs depicting lifestyle, amenities, food services, club services, rental services, hosting services, finishes, designs, materials, furnishings, fixtures, appliances, cabinetry, soffits, lighting, countertops, floor plans, specifications, or art are proposed only, and the Developer reserves the right to modify, revise, or withdraw any or all of the same in its sole discretion. No specific view is guaranteed. Dimensions and square footage are approximate and may vary depending on how measured and based upon actual construction. Any art installed will be selected by the Developer at the Developer's sole discretion and shall be owned by Developer and not owned by the Condominium Association. Nearby attractions, shopping venues, restaurants, and activities referenced or depicted are off-site, are not controlled by the Developer, and are not guaranteed to exist upon completion of the Condominium. All statistics referenced are based on public information available as of the date of initial marketing of the Condominium. Pursuant to license agreements Developer has a right to use the trade names, marks, and logos of: (1) St Regis; (2) St. Regis Residences; (3) The Related Group; and (3) Integra Investments, LLC and the Developer shall continue to have to the right to use each respective name and logos affiliated with each name for so long as the license agreement governing use of a name is not terminated or expired. The Association for the Condominium is required to maintain a Residential Condominium Management Agreement with Marriott International, Inc., or its successors and assigns, in order to use the names St. Regis or St Regis Residences or the logos affiliated with these names. Marriott International, Inc. is not the Developer and is not responsible for the marketing, development, or sales of the Condominium. Marriott International, Inc., The Related Group, and Integra Investments, LLC are each licensor, and none is the Developer. Consult the Developer's Prospectus for the proposed budget, terms, conditions, specifications, fees, and Unit dimensions. The Developer is not incorporated in, located in, nor a resident of, New York. This is not intended to be an offer to sell, or solicitation of an offer to buy, condominium units in New York or to residents of New York, or of any other jurisdiction were prohibited by law. 2022 © 1809 Brickell Phase II, LLC, with all rights reserved.

BRICKELL AVE

